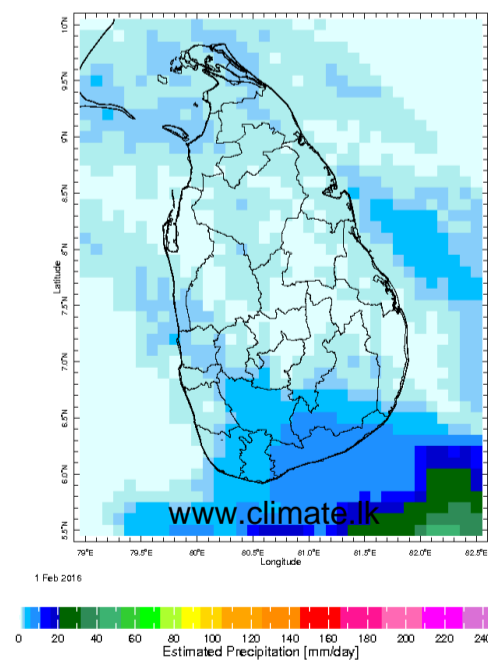
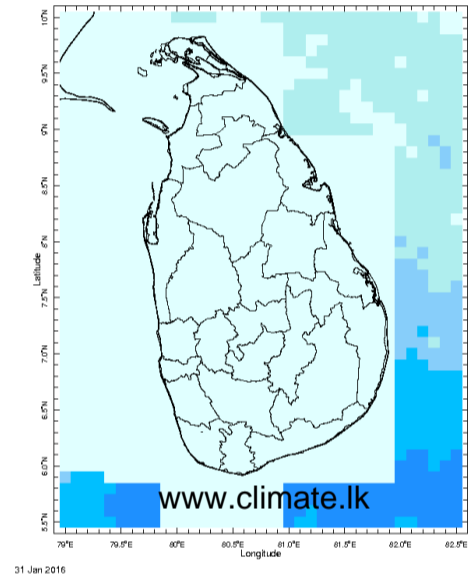
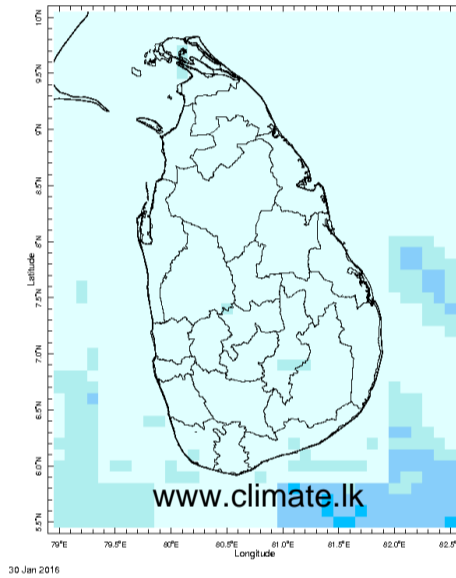
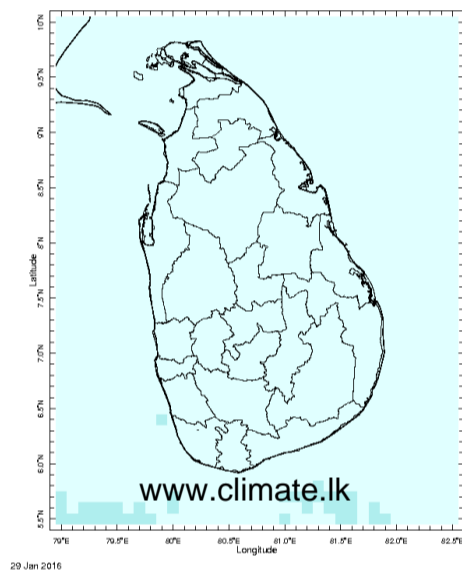
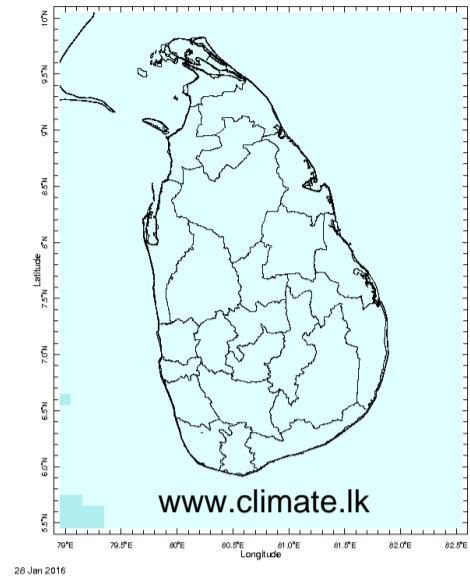
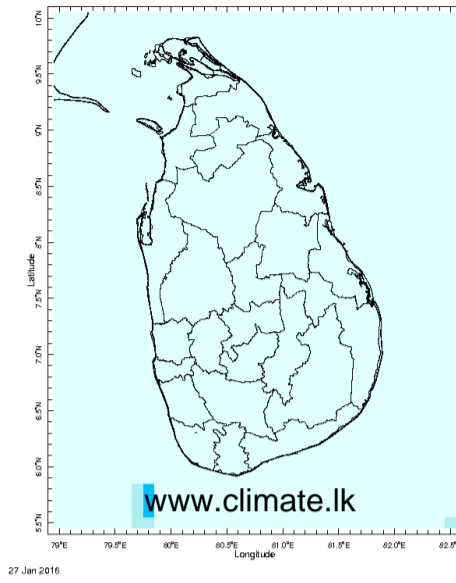
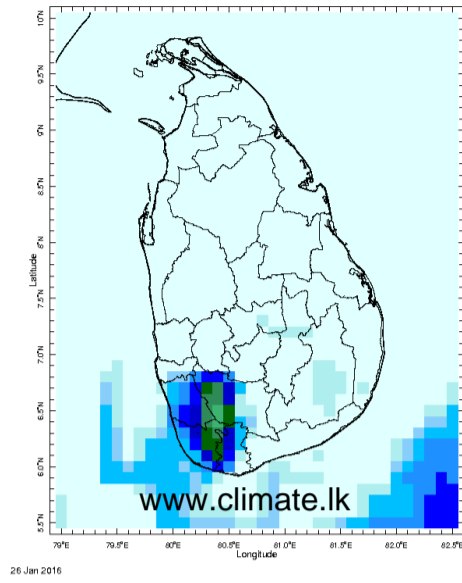


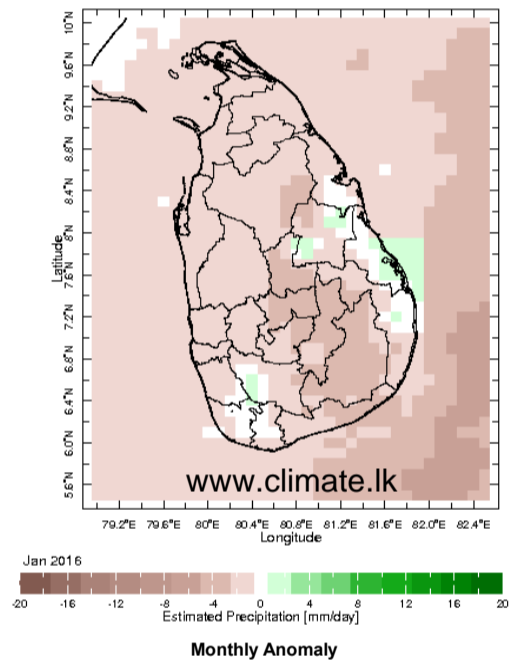
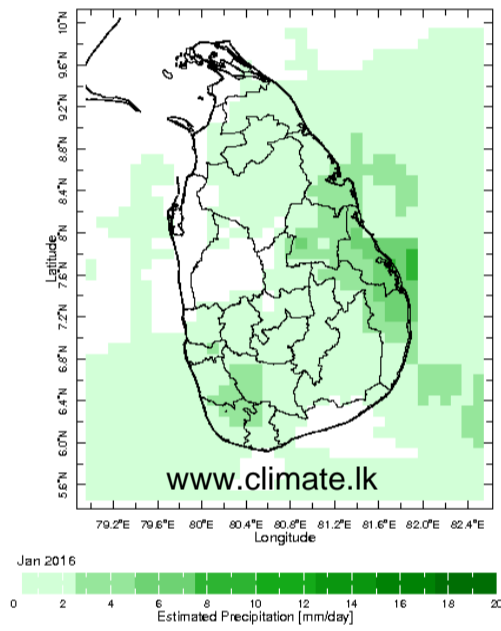
Daily Rainfall Monitoring

The following figures show the satellite observed rainfall in the last 7 days in Sri Lanka.

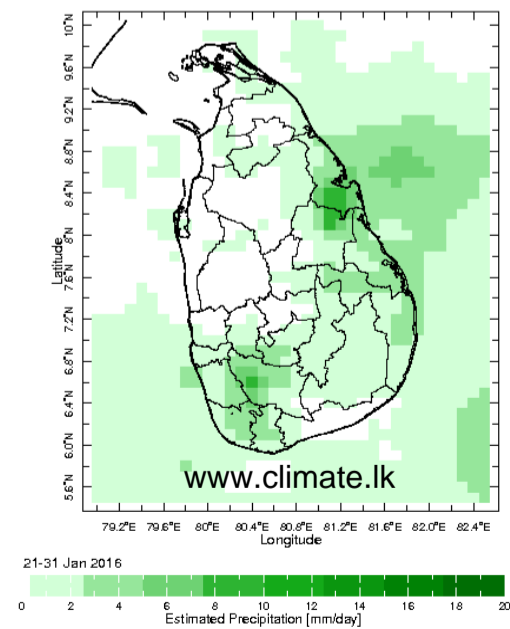
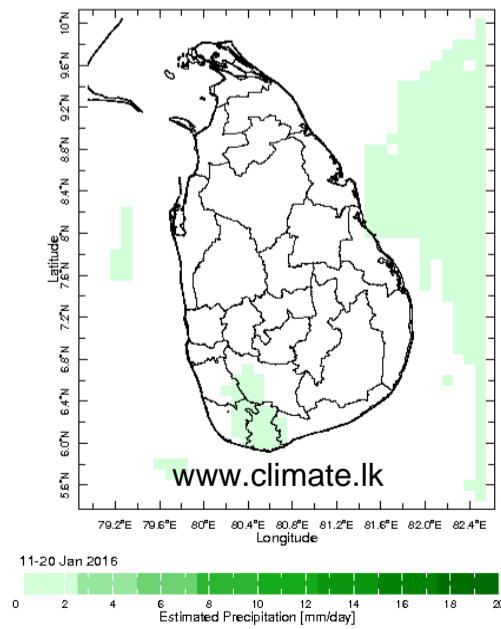


Monthly Rainfall Monitoring

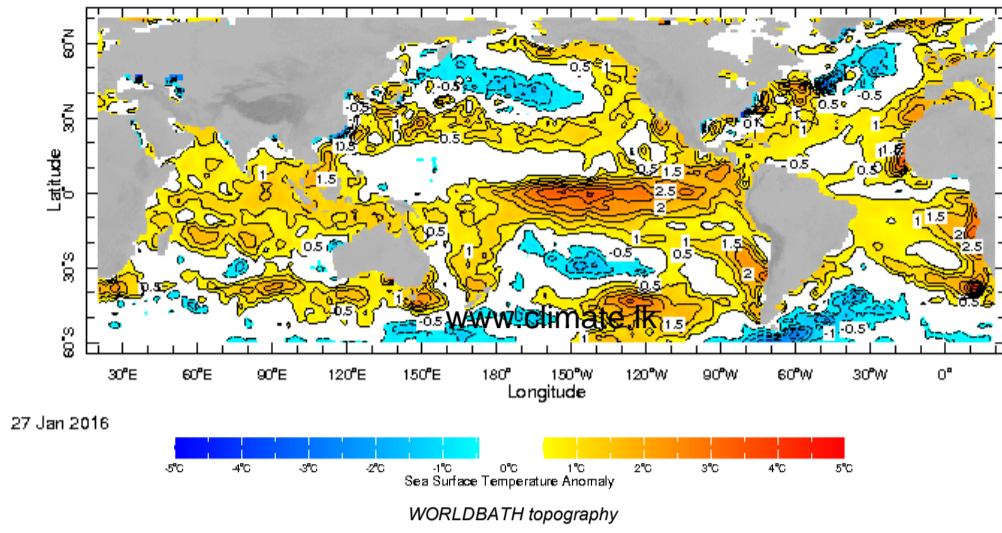
The figure in the left shows the average observed rainfall in the previous month. The rainfall anomaly in the previous month is shown in the figure to the right. The brown color in the anomaly figure shows places which received less rainfall than the historical average while the green color shows places with above average rainfall. Darker shades show higher magnitudes in rainfall



Dekadal (10 Day) Satellite Derived Rainfall Estimates

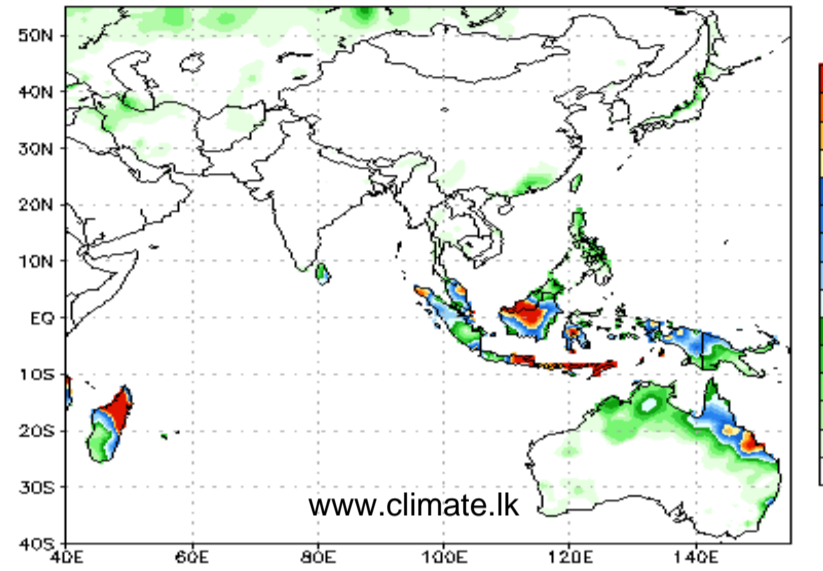


Weekly Average SST Anomalies

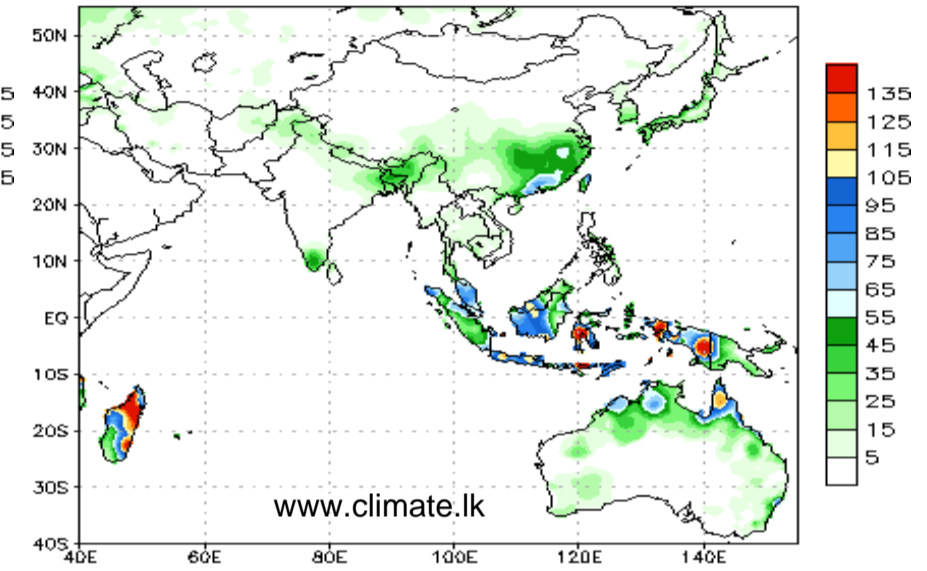


NCEP GFS 1- 14 Day prediction

NCEP GFS Ensemble Forecast 1-7 Day Precipitation (mm)
from: 02Feb2016
02Feb2016-08Feb2016 Accumulation



NCEP GFS Ensemble Forecast 8-14 Day Precipitation (mm)
from: 02Feb2016
09Feb2016-15Feb2016 Accumulation

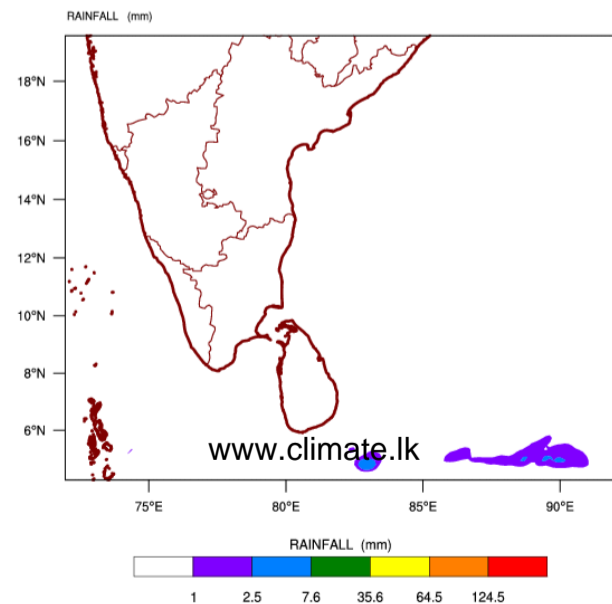


Bias correction based on last 30-day forecast error

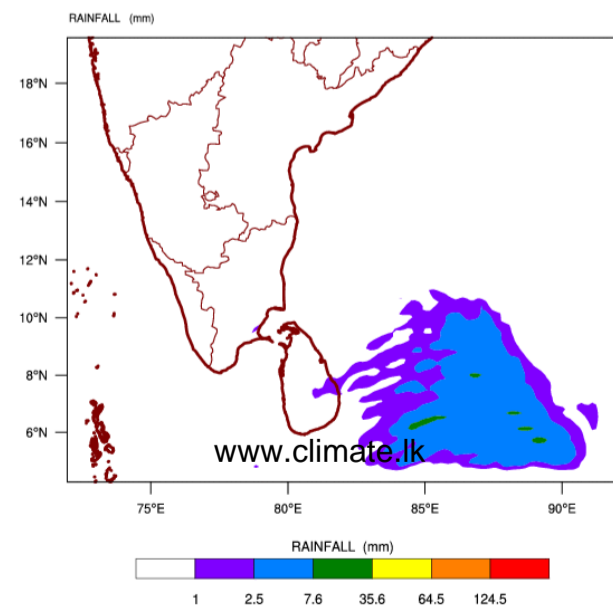
Bias correction based on last 30-day forecast error

WRF Model Forecast (from IMD Chennai)

WRF-RegGSI MODEL FORECAST(48 HR.) RAINFALL(mm)
based on 00 UTC of 01-02-2016 valid for 03 UTC of 03-02-2016

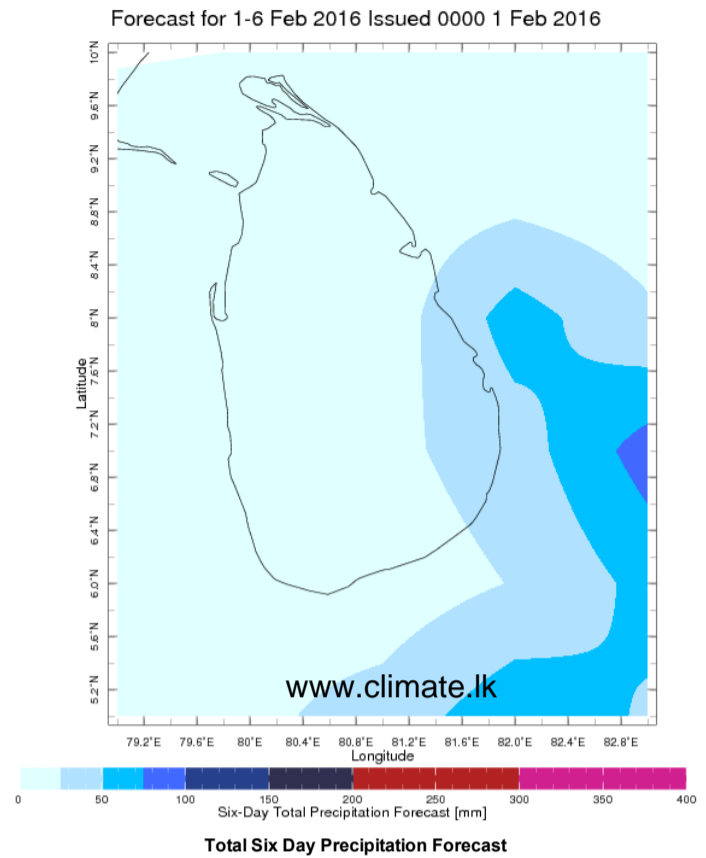
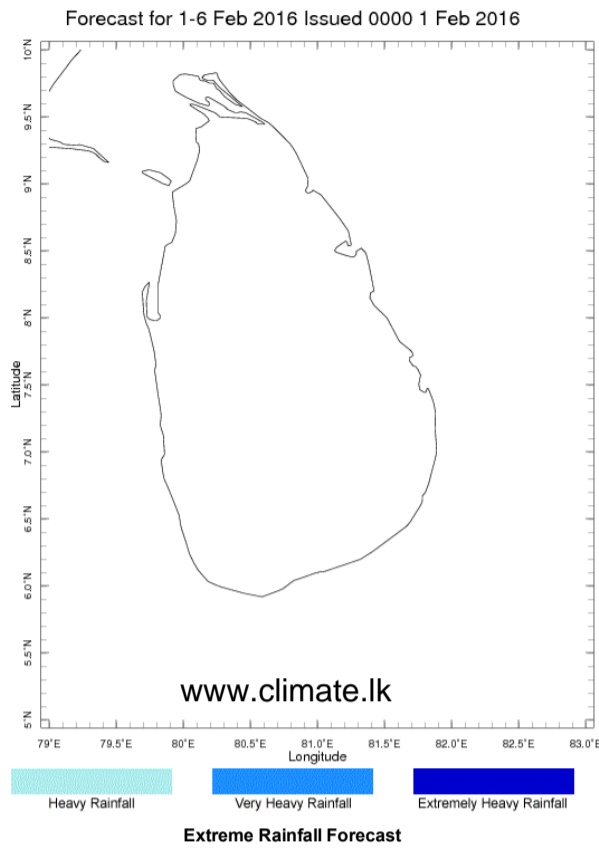


WRF-RegGSI MODEL FORECAST(72 HR.) RAINFALL(mm)
based on 00 UTC of 01-02-2016 valid for 03 UTC of 04-02-2016



Weekly Rainfall Forecast

Total rainfall forecast from the IRI for next six days is provided in figures below. The figure to the left shows the expectancy of heavy rainfall events during these six days while the figure to the right is the prediction of total rainfall amount during this period.



Seasonal Rainfall and Temperature Forecast

Following is the latest seasonal precipitation and temperature prediction for the next 3 months by the IRI. The color shading indicates the probability of the most dominant tercile – that is, the tercile having the highest forecast probability. The color bar alongside the map defines these dominant tercile probability levels. The upper side of the color bar shows the colors used for increasingly strong probabilities when the dominant tercile is the above-normal tercile, while the lower side shows likewise for the below-normal tercile. The gray color indicates an enhanced probability for the near-normal tercile (nearly always limited to 40%).

