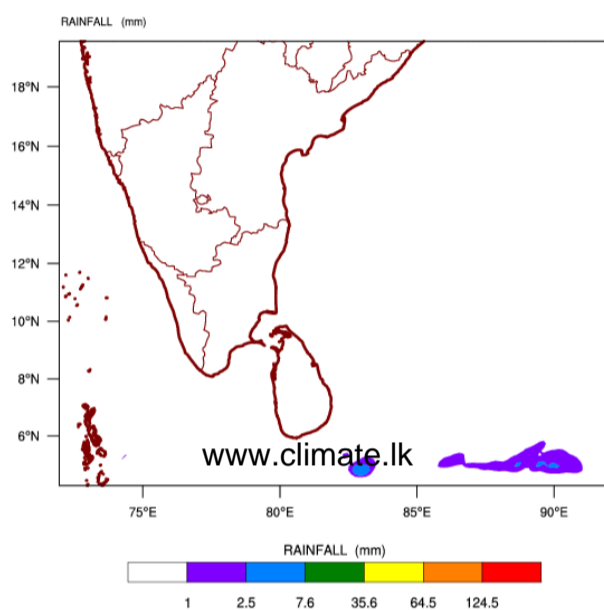


WRF Model Forecast (from IMD Chennai)

WRF-RegGSI MODEL FORECAST(48 HR.) RAINFALL(mm)\
based on 00 UTC of 01-02-2016 valid for 03 UTC of 03-02-2016



WRF-RegGSI MODEL FORECAST(72 HR.) RAINFALL(mm)\
based on 00 UTC of 01-02-2016 valid for 03 UTC of 04-02-2016

