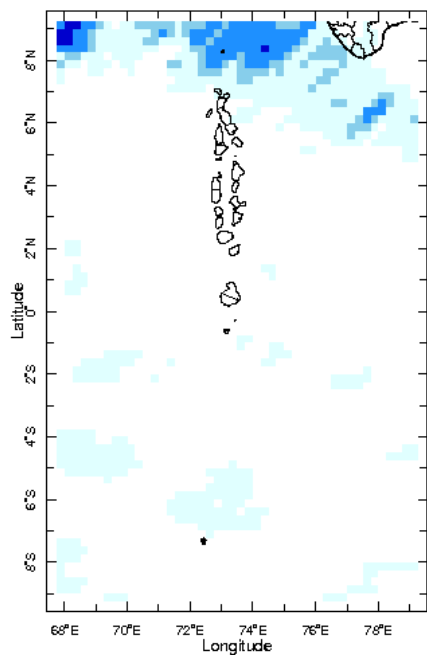
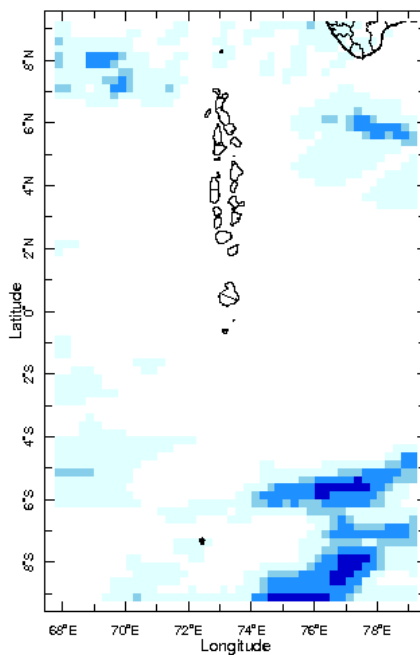


Daily Rainfall Monitoring

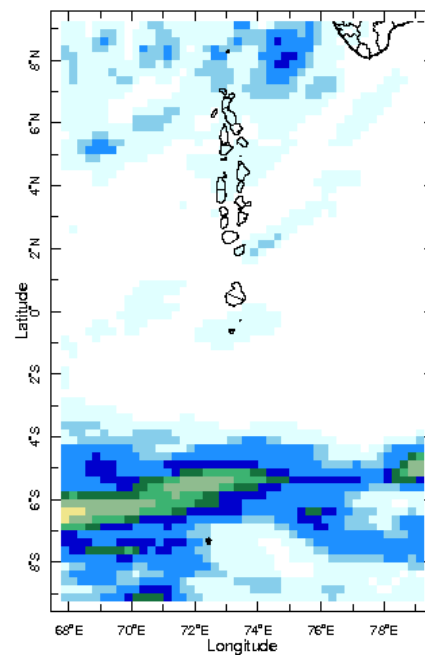
The following figures show the observed rainfall in the last 15 days in Maldives.



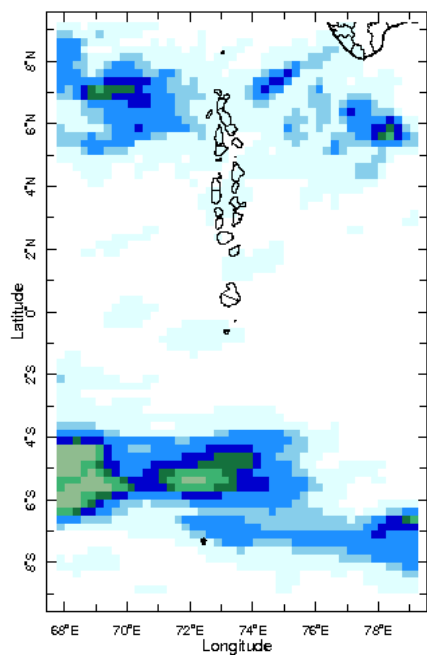
27 Jun 2016



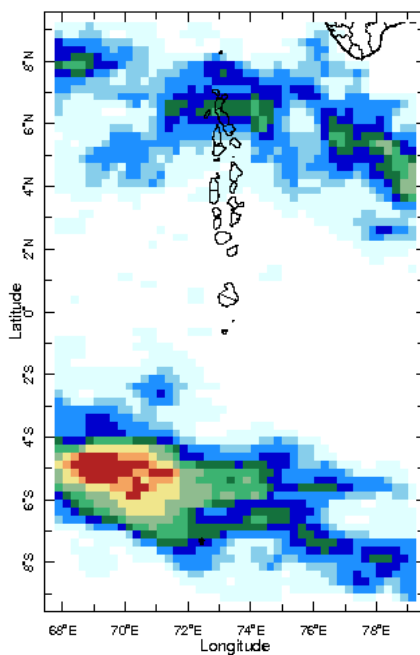
28 Jun 2016



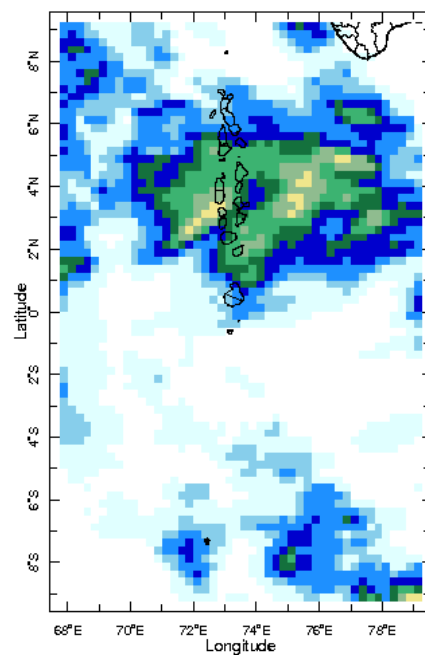
29 Jun 2016



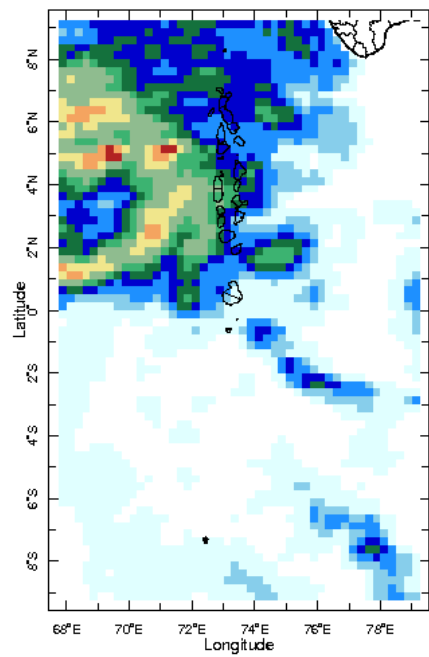
30 Jun 2016



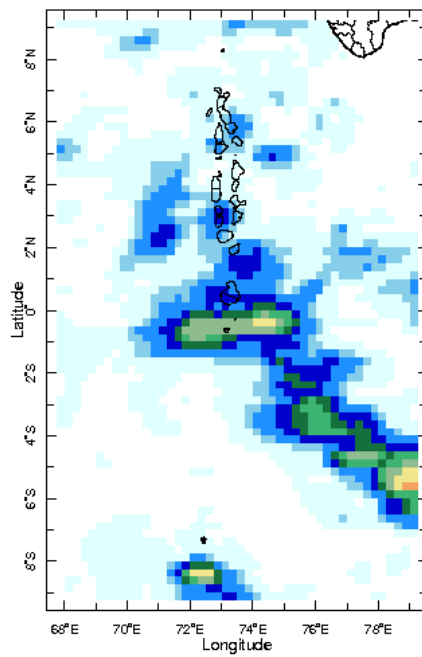
1 Jul 2016



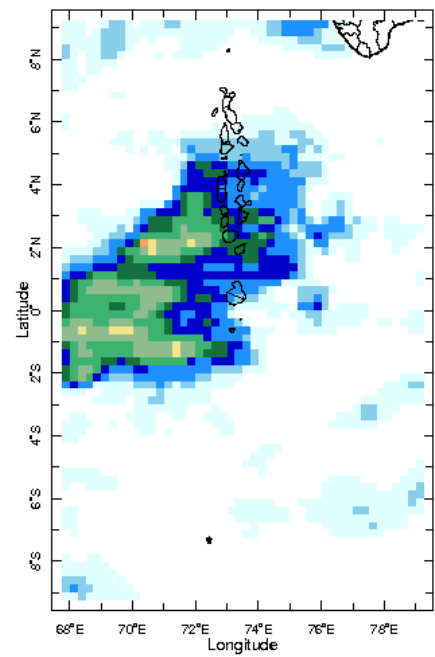
2 Jul 2016



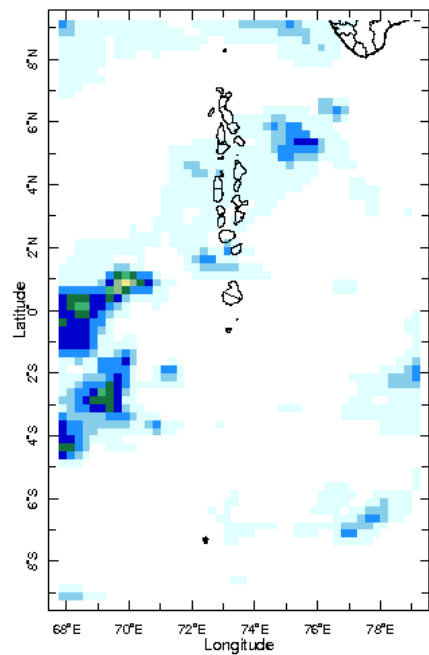
3 Jul 2016



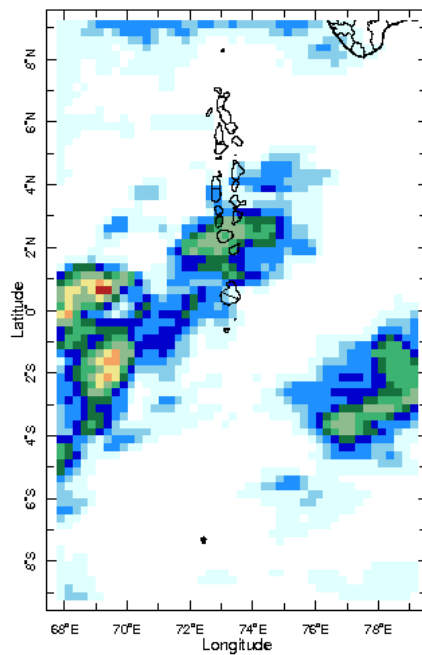
4 Jul 2016



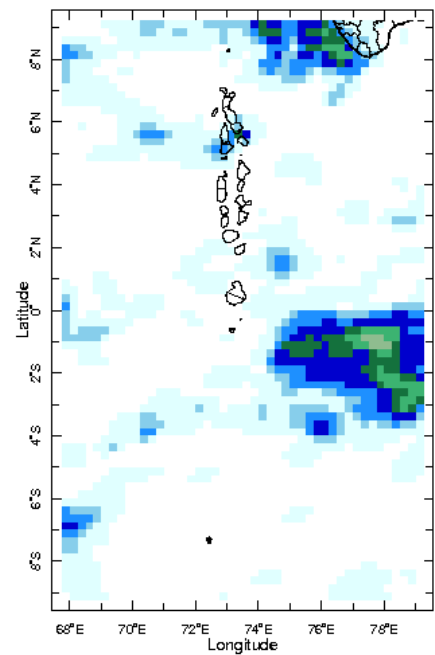
5 Jul 2016



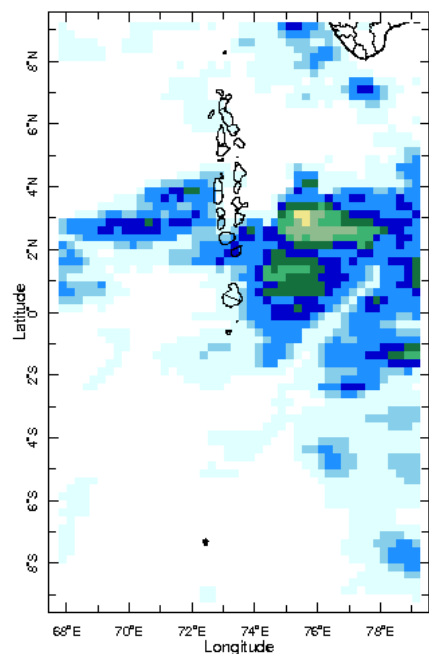
6 Jul 2016



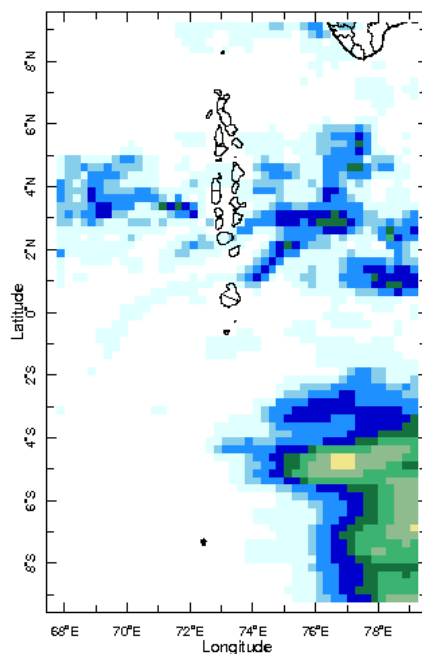
7 Jul 2016



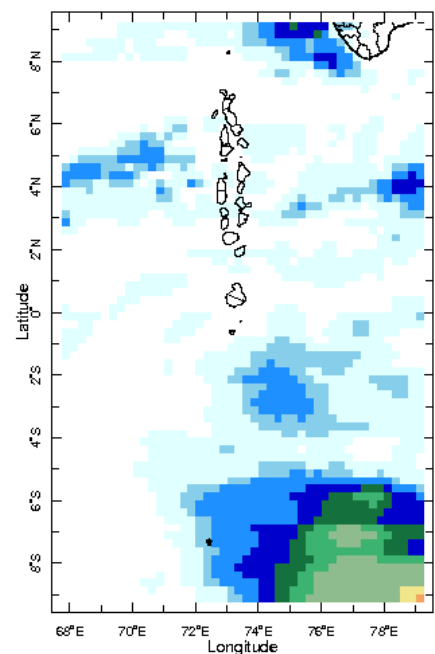
8 Jul 2016



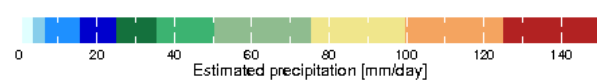
9 Jul 2016



10 Jul 2016

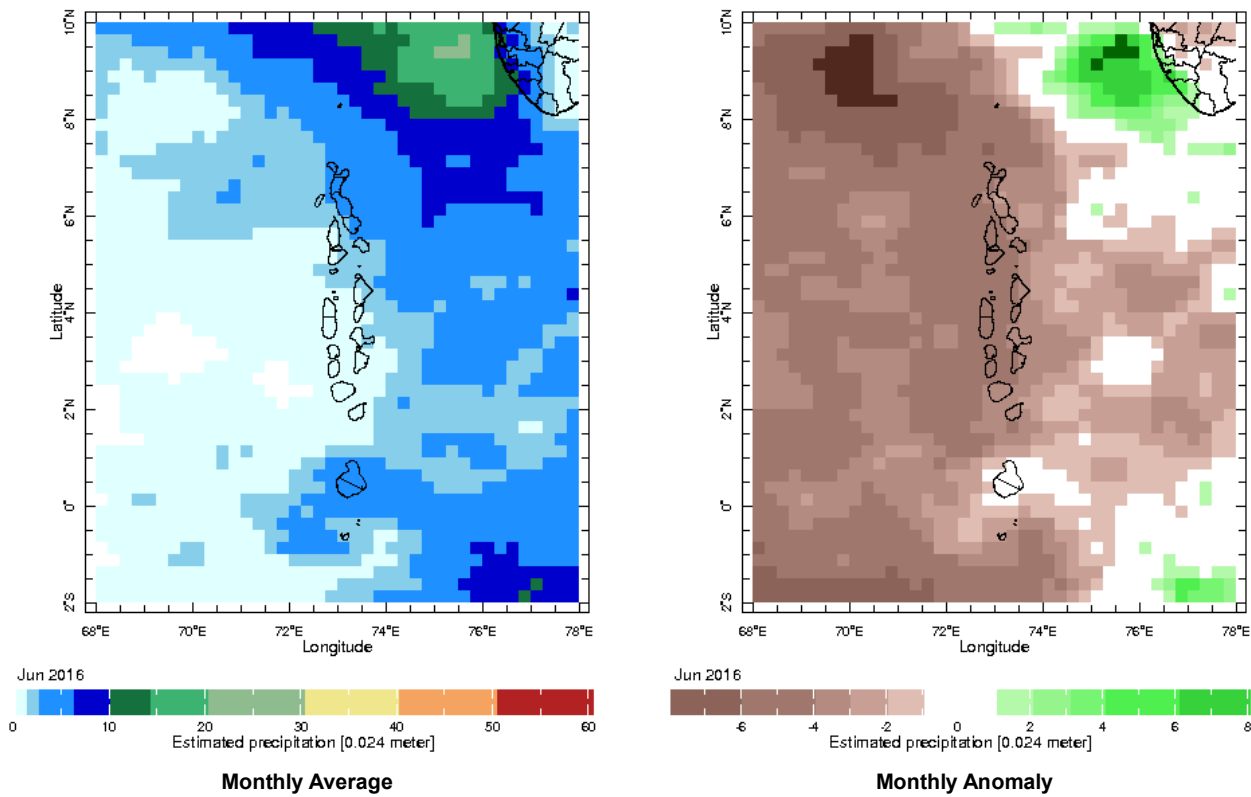


11 Jul 2016



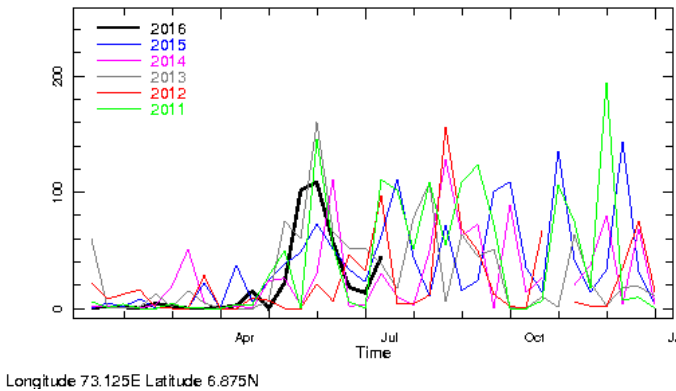
Monthly Rainfall Monitoring

The figure in the left shows the average observed rainfall in the previous month. The rainfall anomaly in the previous month is shown in the figure to the right. The brown color in the anomaly figure shows places which received less rainfall than the historical average while the green color shows places with above average rainfall. Darker shades show higher magnitudes in rainfall

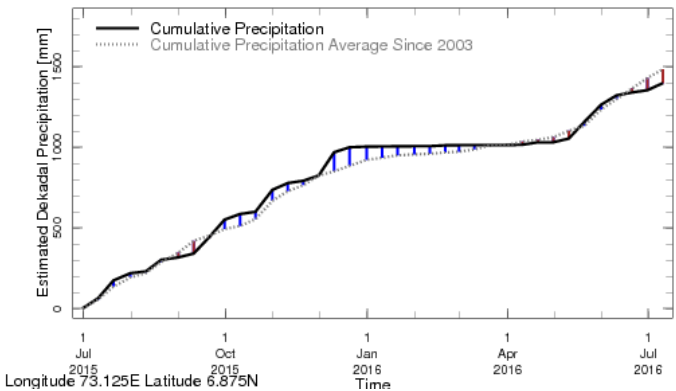


Monthly and Seasonal Monitoring

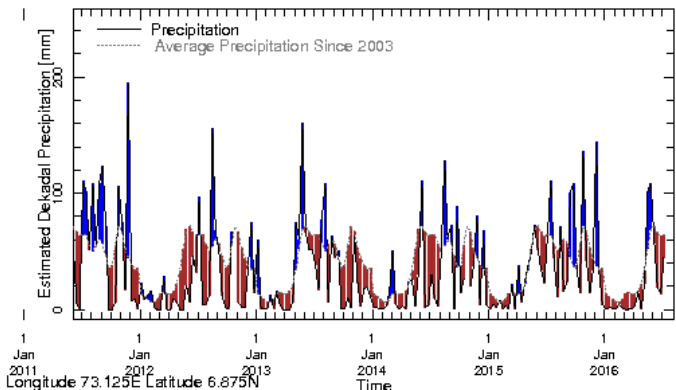
Northern Maldives:



Rainfall in the current year (black) compared to rainfall in previous 5 years

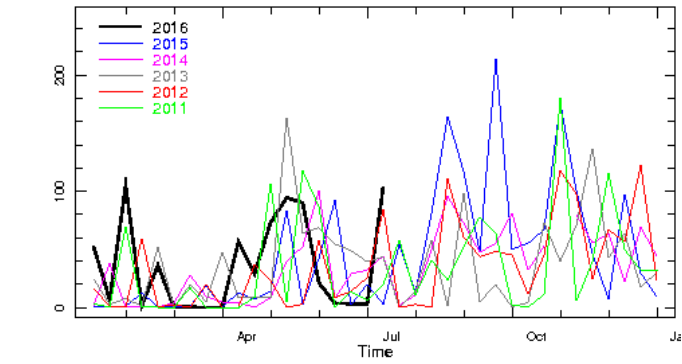


Rainfall of past 365 days (black) compared to average rainfall in previous 8 years.

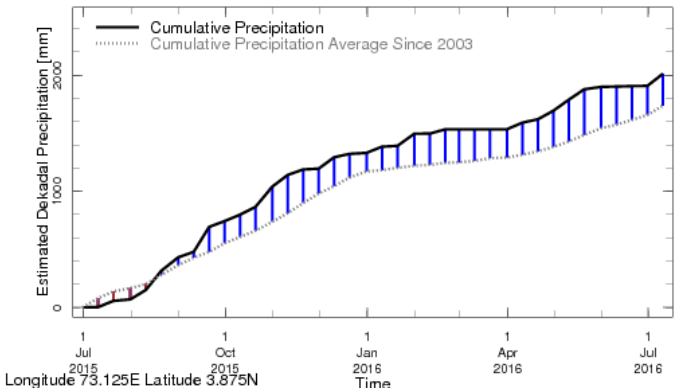


Rainfall in the past 5 years with above-average rainfall hatched in blue and below-average hatched in brown

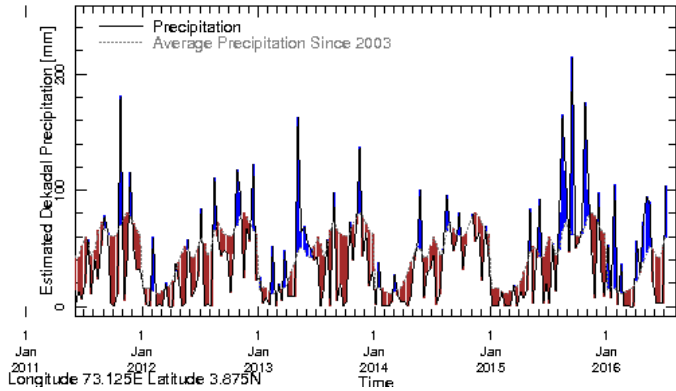
Central Maldives:



Rainfall in the current year (black) compared to rainfall in previous 5 years

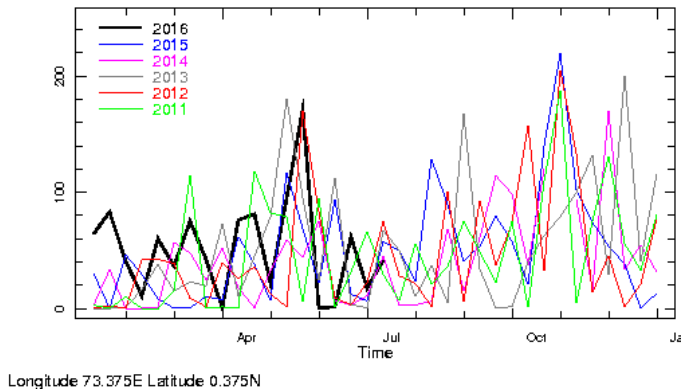


Rainfall of past 365 days (black) compared to average rainfall in previous 8 years.

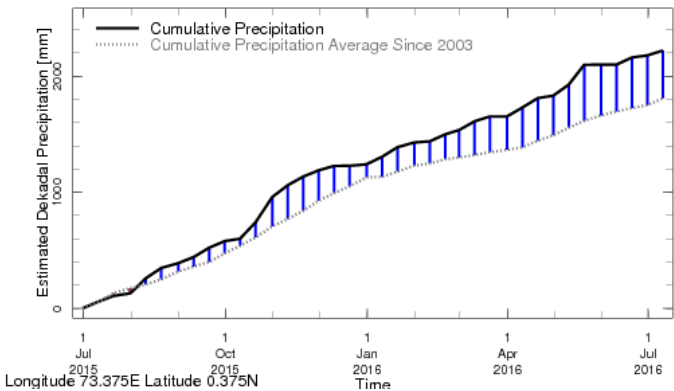


Rainfall in the past 5 years with above-average rainfall hatched in blue and below-average hatched in brown

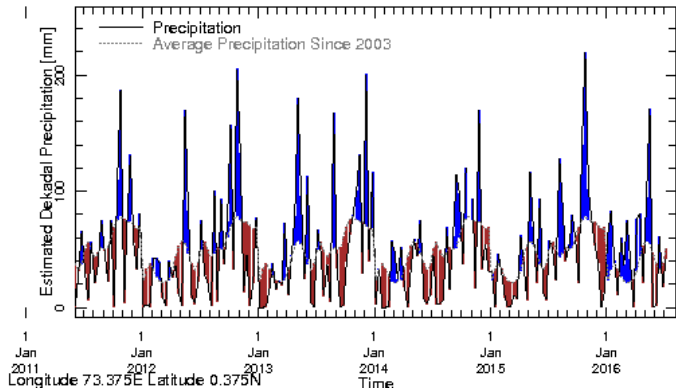
Southern Maldives:



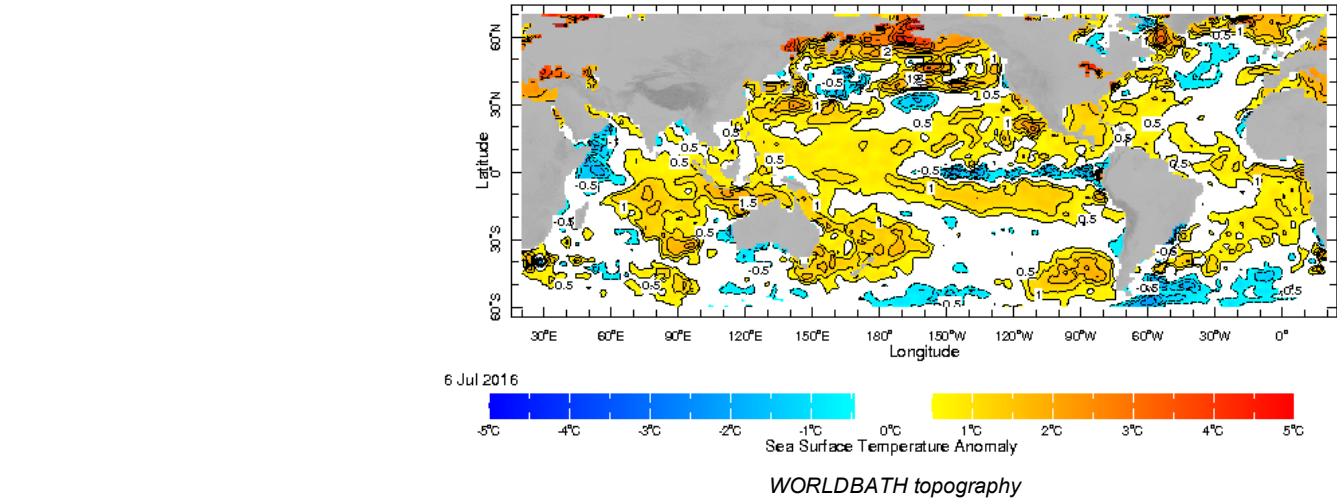
Rainfall in the current year (black) compared to rainfall in previous 5 years



Rainfall of past 365 days (black) compared to average rainfall in previous 8 years.

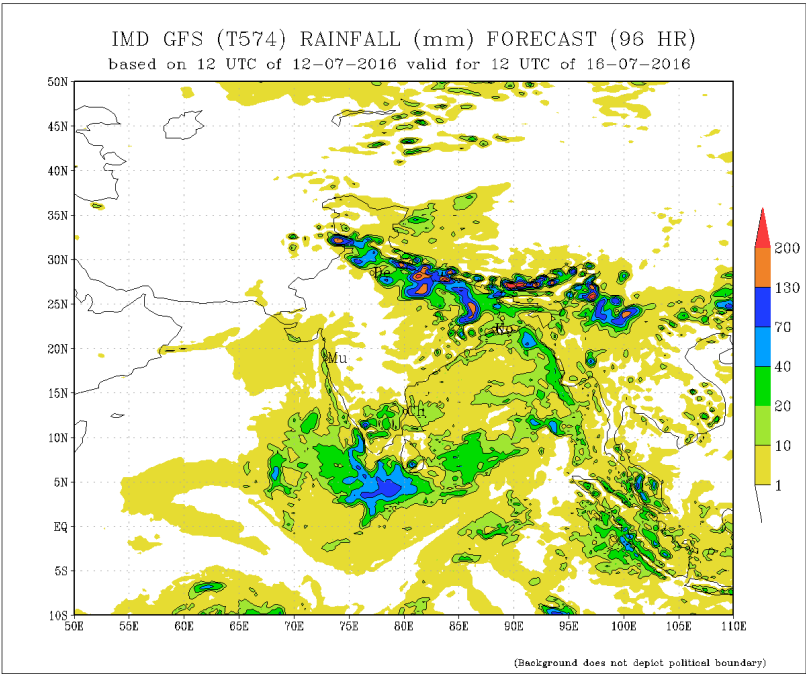
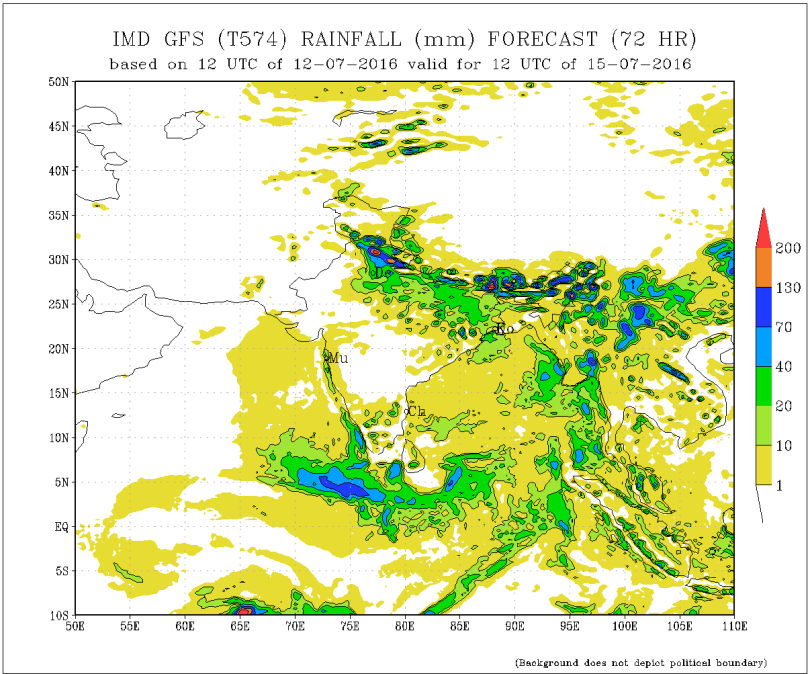
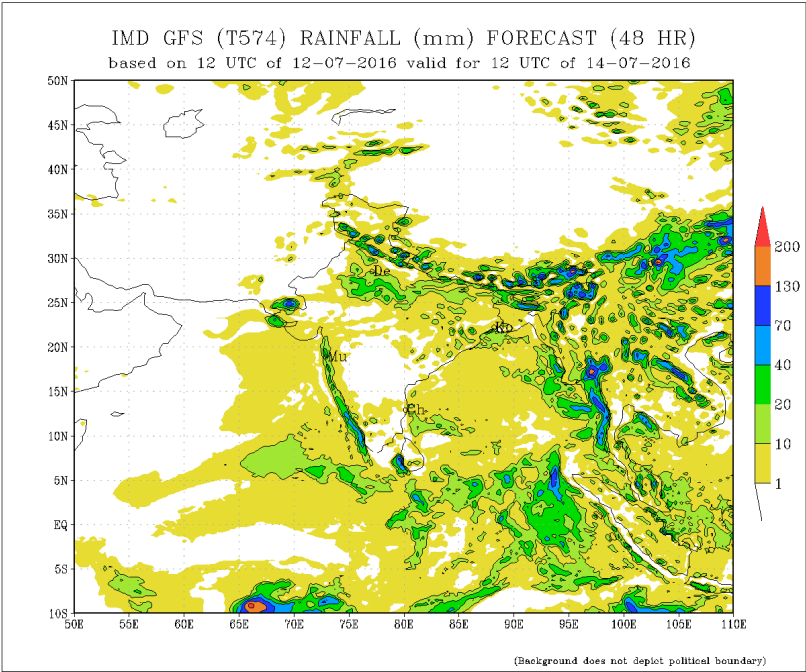
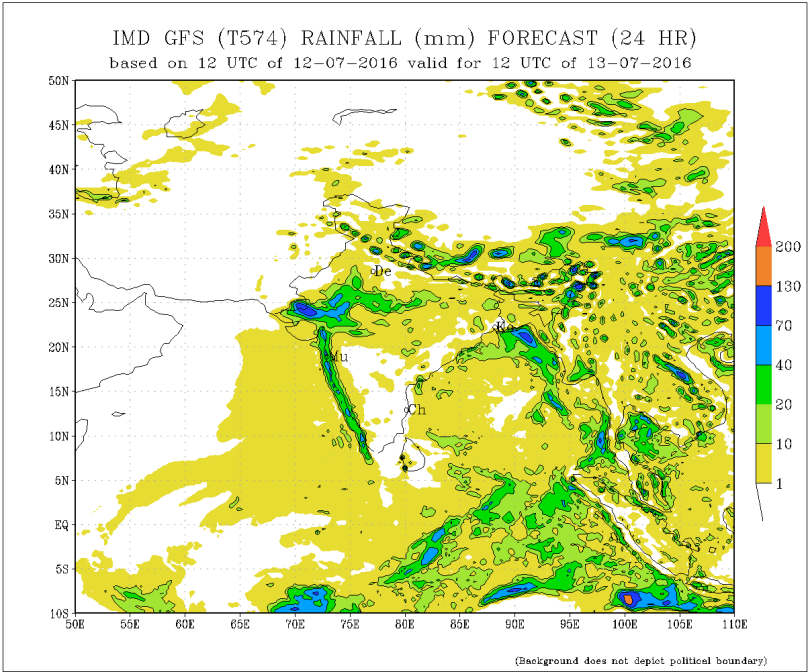


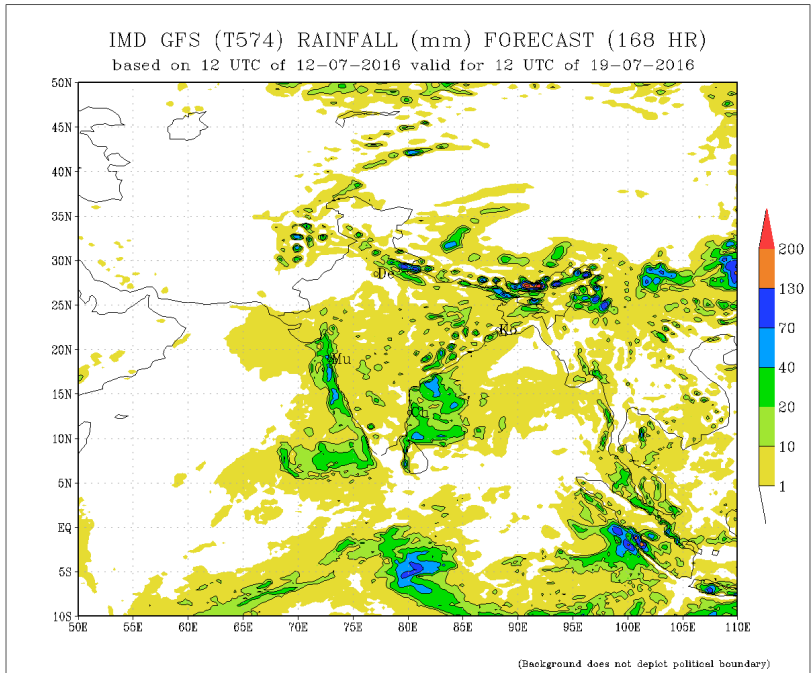
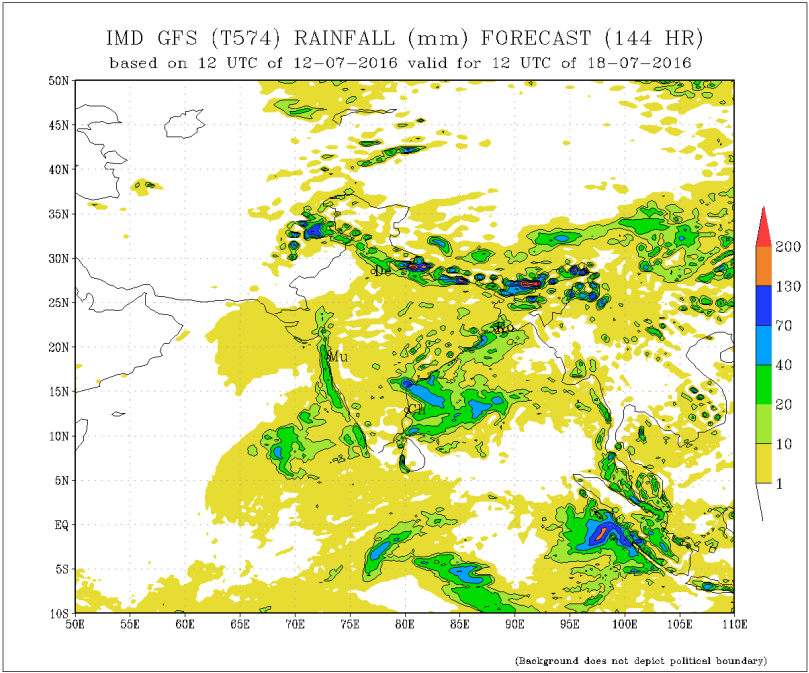
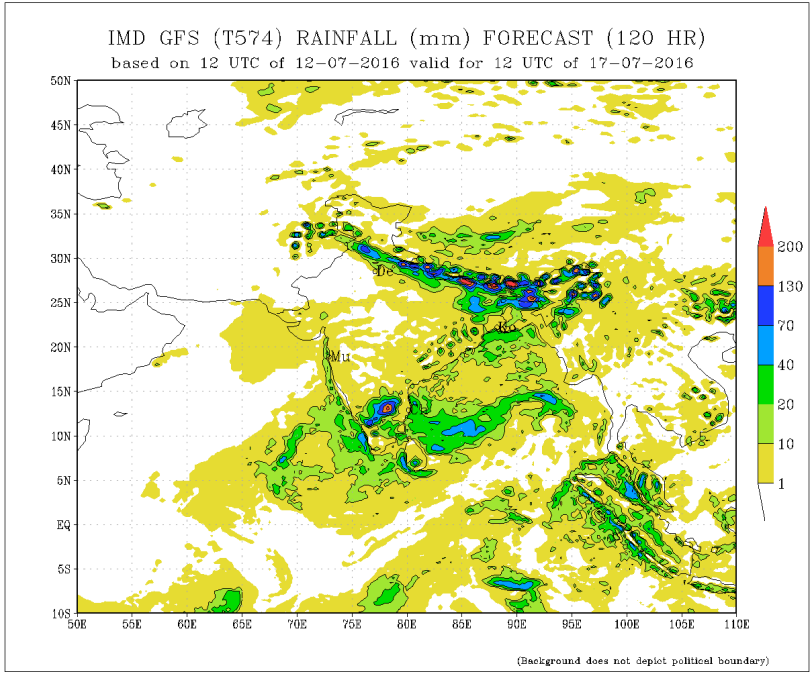
Rainfall in the past 5 years with above-average rainfall hatched in blue and below-average hatched in brown



Daily Rainfall Forecast

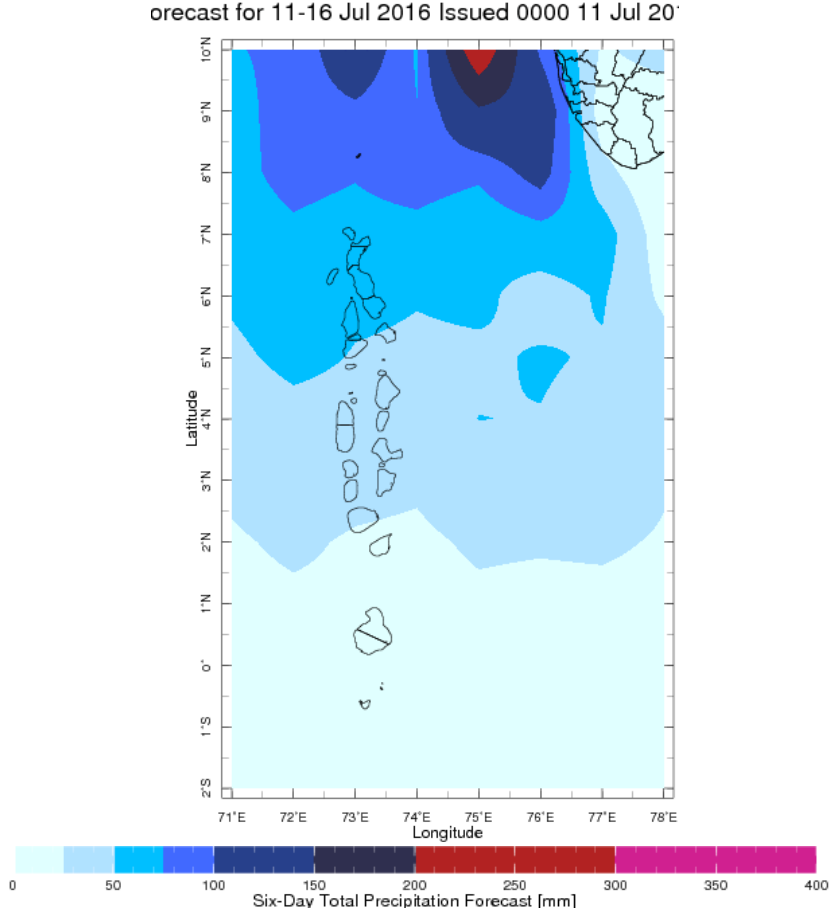
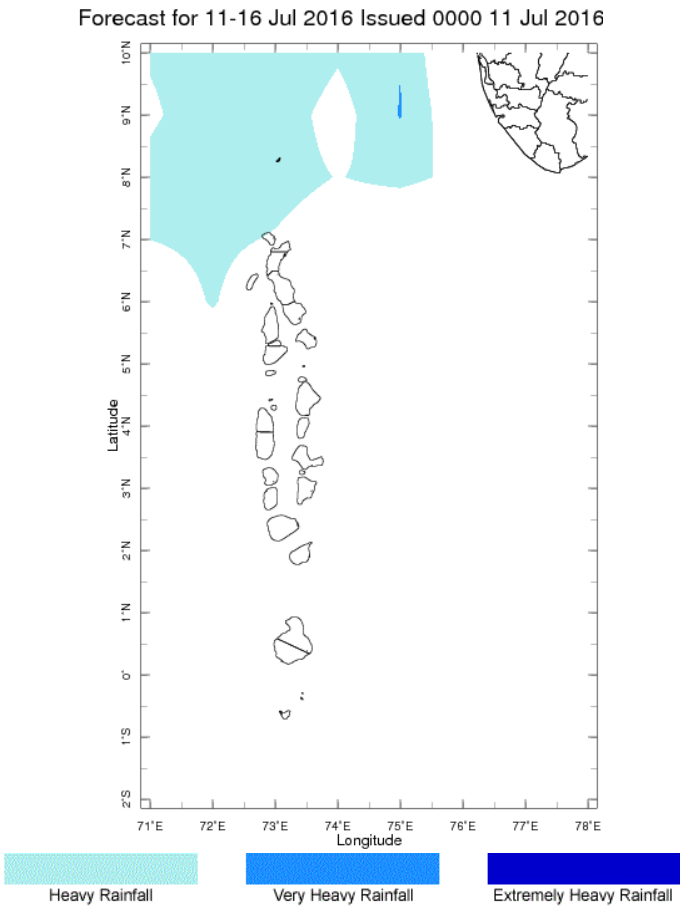
Daily Rainfall forecasts (up to 7 days ahead) from the IMD New Delhi is provided in figures below. These predictions are from the GFS (T574) model covering the entire south Asian region.





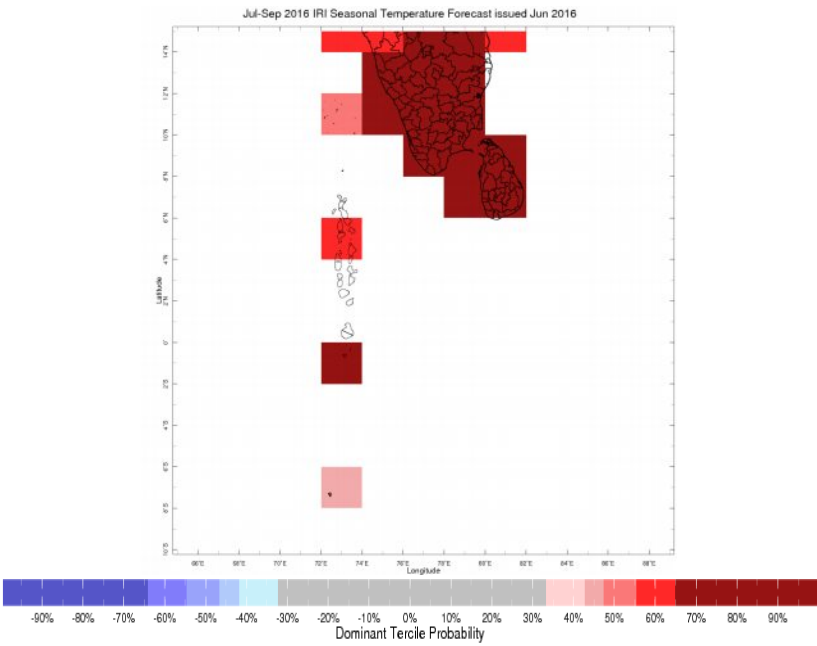
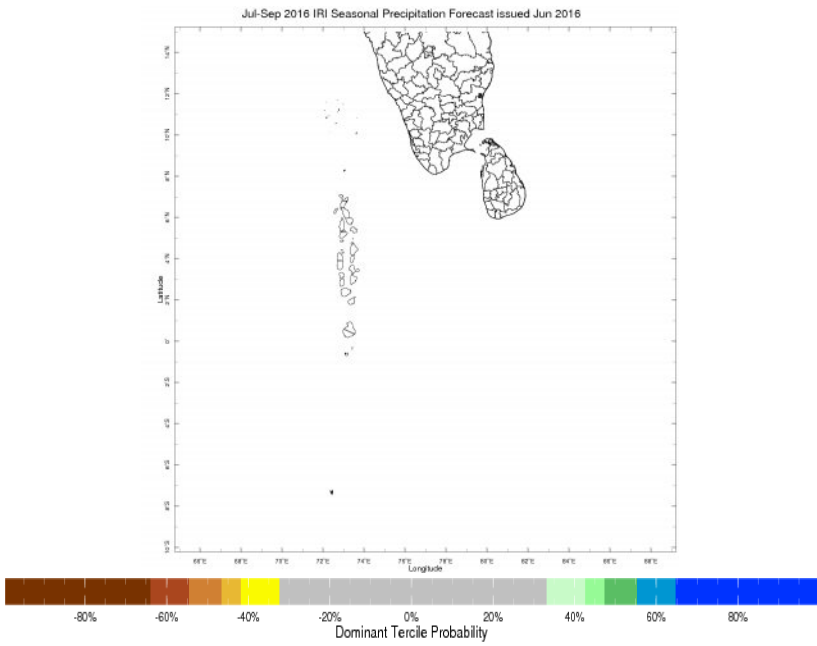
Weekly Rainfall Forecast

Total rainfall forecast from the IRI for next six days is provided in figures below. The figure to the left shows the expectancy of heavy rainfall events during these six days while the figure to the right is the prediction of total rainfall amount during this period.



Seasonal Rainfall and Temperature Forecast

Following is the latest seasonal precipitation and temperature prediction for the next 3 months by the IRI. The color shading indicates the probability of the most dominant tercile -- that is, the tercile having the highest forecast probability. The color bar alongside the map defines these dominant tercile probability levels. The upper side of the color bar shows the colors used for increasingly strong probabilities when the dominant tercile is the above-normal tercile, while the lower side shows likewise for the below-normal tercile. The gray color indicates an enhanced probability for the near-normal tercile (nearly always limited to 40%).



Subscribe to our Monthly Maldives Newsletter

email address

Subscribe

Follow @fectmv

Contact Us

email: fectmv@gmail.com

phone: (+94) 81 2376746

blog: www.fectmv.blogspot.com

Foundation for Environment, Climate & Technology
C/O Mahaweli Authority of Sri Lanka,
Digana Village,
Rajawella,
SRI LANKA