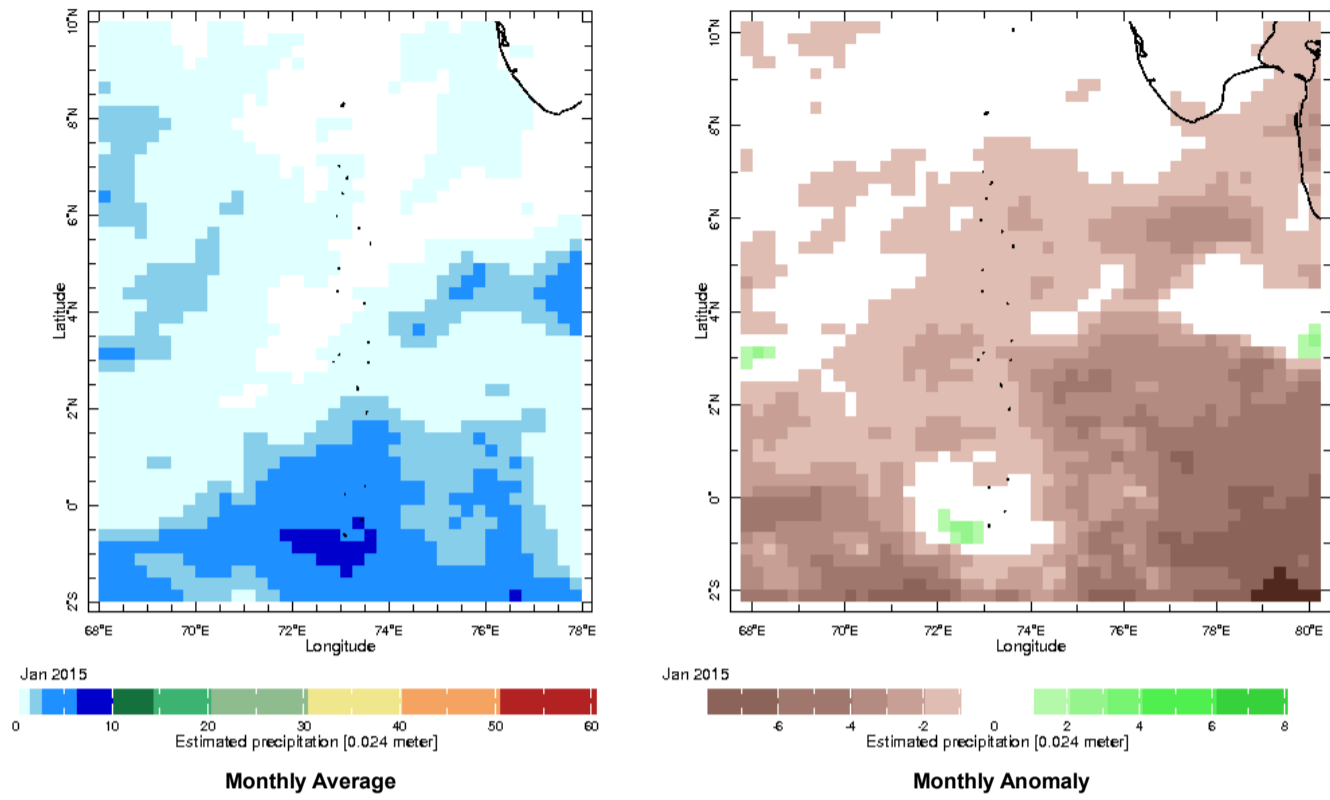


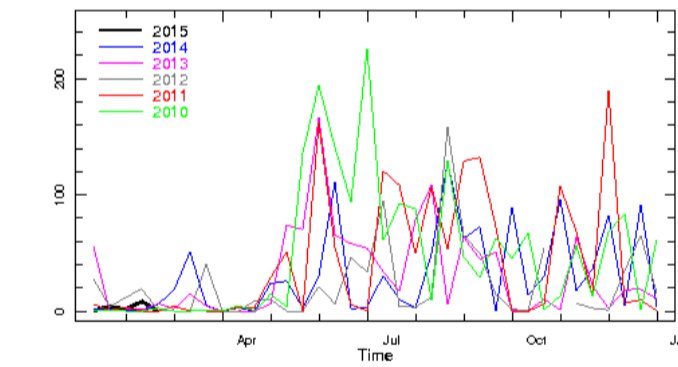
Monthly Rainfall Monitoring

The figure in the left shows the average observed rainfall in the previous month. The rainfall anomaly in the previous month is shown in the figure to the right. The brown color in the anomaly figure shows places which received less rainfall than the historical average while the green color shows places with above average rainfall. Darker shades show higher magnitudes in rainfall

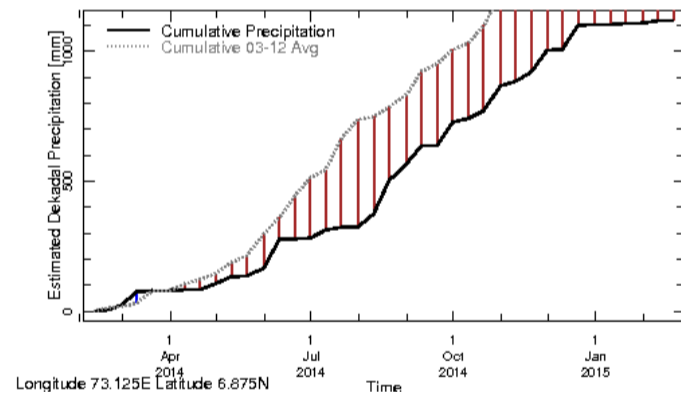


Monthly and Seasonal Monitoring

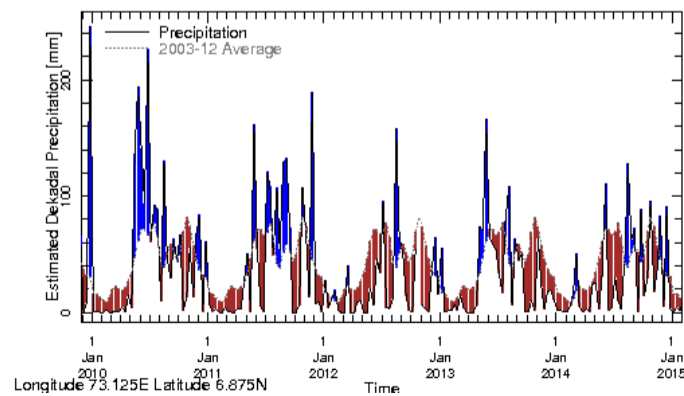
Northern Maldives:



Rainfall in the current year (black) compared to rainfall in previous 5 years

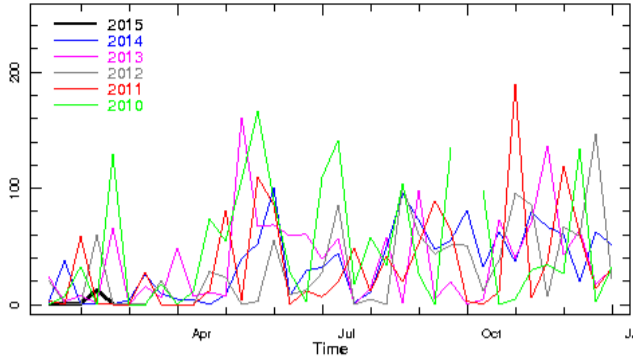


Rainfall of past 365 days (black) compared to average rainfall in previous 8 years.



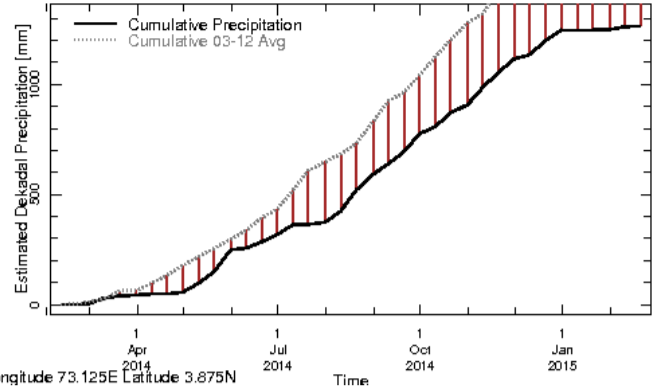
Rainfall in the past 5 years with above-average rainfall hatched in blue and below-average hatched in brown

Central Maldives:



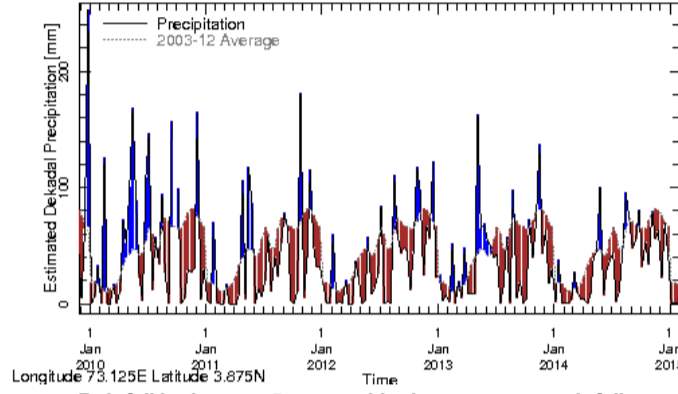
Longitude 73.125E Latitude 3.875N

Rainfall in the current year (black) compared to rainfall in previous 5 years



Longitude 73.125E Latitude 3.875N

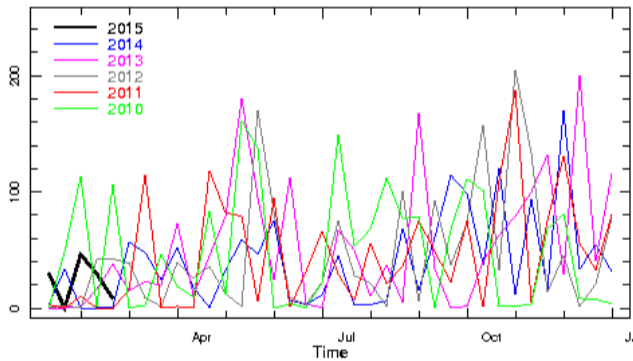
Rainfall of past 365 days (black) compared to average rainfall in previous 8 years.



Longitude 73.125E Latitude 3.875N

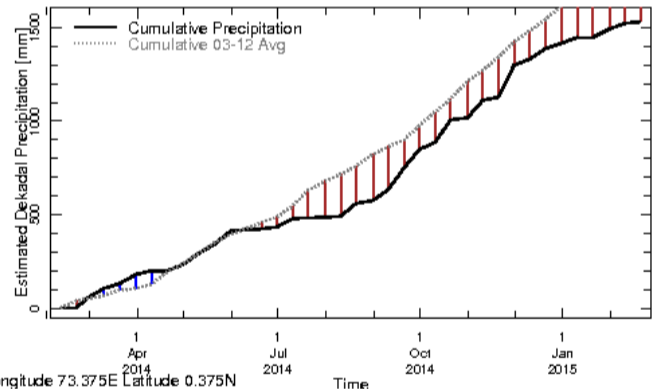
Rainfall in the past 5 years with above-average rainfall hatched in blue and below-average hatched in brown

Southern Maldives:



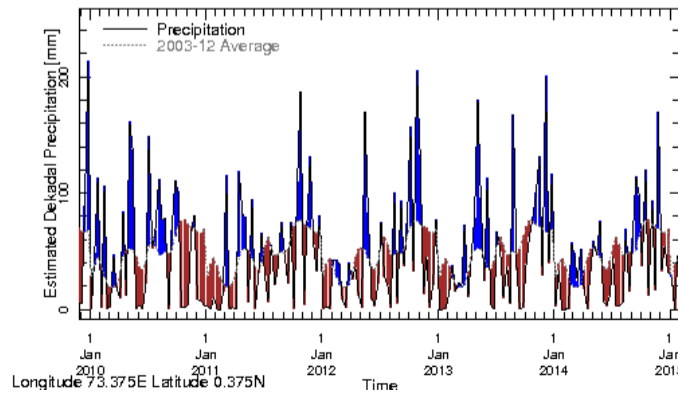
Longitude 73.375E Latitude 0.375N

Rainfall in the current year (black) compared to rainfall in previous 5 years



Longitude 73.375E Latitude 0.375N

Rainfall of past 365 days (black) compared to average rainfall in previous 8 years.



Longitude 73.375E Latitude 0.375N

Rainfall in the past 5 years with above-average rainfall hatched in blue and below-average hatched in brown