

**Preliminary Statistics of the Census of Population
and Buildings of the Census Blocks Affected by the
Tsunami – 2004**

(In this report, statistics are given only for the affected
Grama Niladhari divisions)

MATARA DISTRICT

Department of Census and Statistics - 2005



Dept. of Census
and Statistics

GN Divisions of the Matara district affected by the Tsunami: 9.0/2004

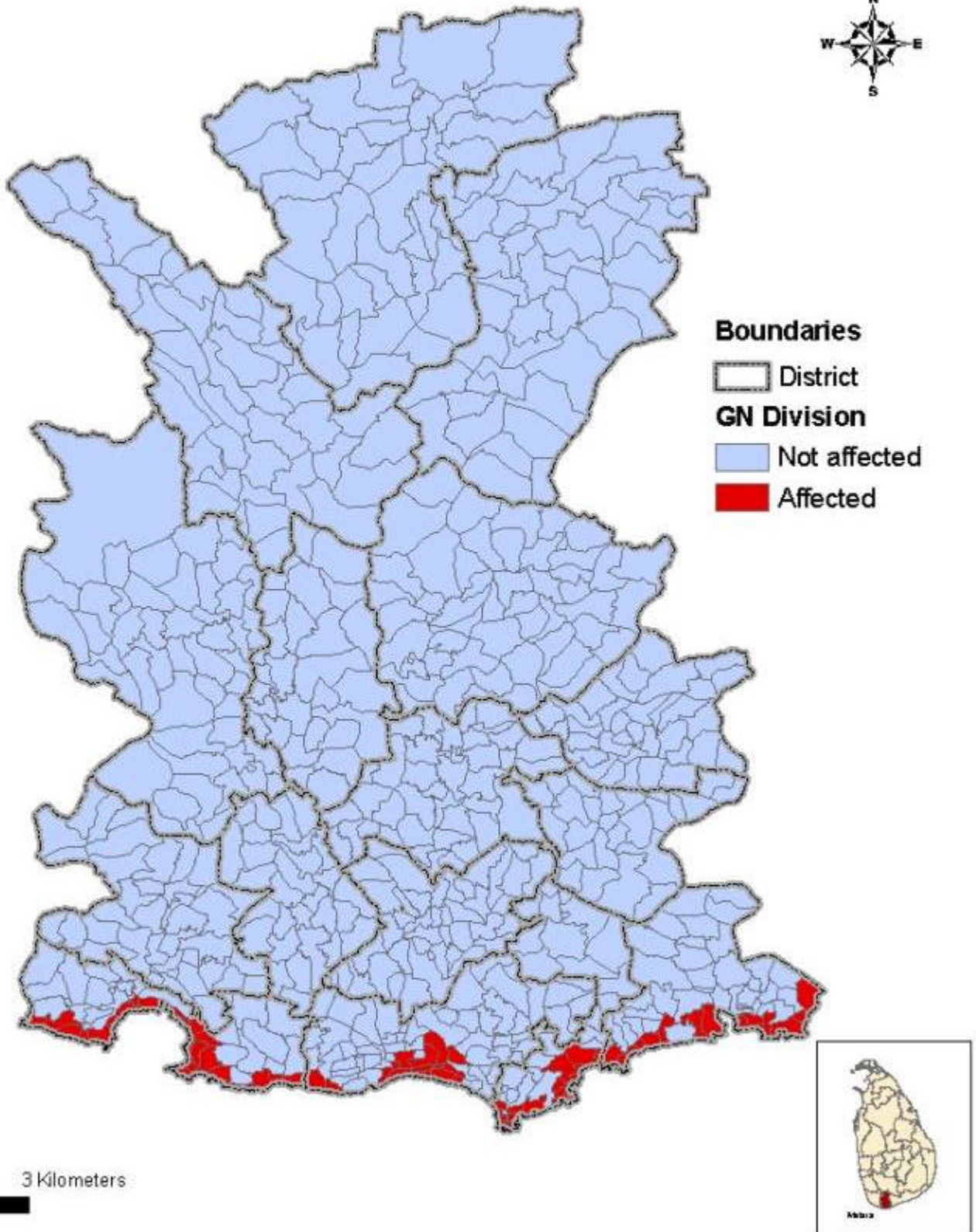


Table 1 : Number of housing units of affected census blocks, before and after Tsunami 2004 by DS division*: Matara district (Provisional)

DS Division	Number of GN Divisions		Number of census blocks in the affected GN divisions		Number of housing units in affected census blocks				
	Total GN divisions	Affected GN divisions	Total Census Blocks	Affected Census Blocks	Before the disaster	Completely damaged	Partially damaged and cannot be used	Partially damaged and can be used	Not damaged
Weligama	48	22	133	106	5,682	739	282	1,627	3,034
Dikwella	66	18	93	59	2,907	278	136	518	1,975
Devinuwara	48	16	84	38	2,074	88	64	243	1,679
Matara Four Gravets	41	18	128	94	5,592	562	252	1,449	3,329
Total	203	74	438	297	16,255	1,667	734	3,837	10,017

*Statistics are given here only for the affected DS divisions

Source: Department of Census and Statistics

Table 1.1a : Number of housing units before and after Tsunami 2004 by affected GN division*: Weligam DS division of Matara District (Provisional)

Affected GN Division				Number of housing units in affected census blocks					
Name	No.	Code	Number of census blocks		Before the disaster	Completely damaged	Partially damaged and cannot be used	Partially damaged and can be used	Not damaged
			Total Census blocks	Affected Census blocks					
Bandaramulla	407A	210	5	3	193	5	8	29	151
Denuwala	381C	040	9	5	210	55	14	67	74
Galbokka East	385	115	5	5	263	11	8	60	184
Gurubebila	380A	140	9	9	399	16	12	119	252
Henwala West	405D	165	4	1	59	3	0	3	53
Kamburugamuwa South	408C	225	3	3	151	36	3	27	85
Kamburugamuwa West	408A	230	3	3	208	18	4	64	122
Kapparathota North	386D	200	5	4	319	1	2	9	307
Kapparathota South	386C	195	6	5	267	11	2	17	237
Maha Weediya	382	155	6	4	277	23	16	119	119
Midigama East	380	050	5	3	168	0	3	12	153
Mirissa North	405	185	7	1	12	0	0	0	12
Mirissa South 1	406	205	6	6	318	15	17	119	167
Mirissa South 2	406A	190	7	7	468	22	12	151	283
Mirissa Udupila	405A	180	10	4	178	0	2	8	168
Paranakade	382A	125	11	11	423	74	43	186	120
Pelena North	387C	105	5	5	295	19	23	139	114
Pelena South	387B	160	6	6	403	228	47	87	41
Pelena West	387A	110	5	5	365	60	25	233	47
Polwathumodara	388A	100	3	3	162	9	4	20	129
Thal Aramba East	407C	235	5	5	170	36	9	48	77
Thal Aramba South	407	240	8	8	374	97	28	110	139
			133	106	5682	739	282	1627	3034

*Statistics are given here only for the affected GN divisions

Source: Department of Census and Statistics

Table 1.1b : Number of housing units before and after Tsunami 2004 by affected GN division*: Devinuwara DS division of Matara District (Provisional)

Affected GN Division			Number of census blocks		Number of housing units in affected census blocks				
Name	No.	Code	Total Census	Affected Census	Before the disaster	Completely damaged	Partially damaged and cannot be used	Partially damaged and can be used	Not damaged
			Devinuwara East	433B					
Devinuwara Nugegoda	433D	165	6	1	62	4	1	10	47
Devinuwara Pradeepagara Pedesa	433H	185	6	2	111	5	1	5	100
Devinuwara Sinhasana Pedesa	433F	200	6	3	131	0	1	20	110
Devinuwara South	433	205	5	4	197	4	1	7	185
Devinuwara Wawwa	433E	180	5	2	132	0	0	5	127
Devinuwara Welegoda	433G	195	4	2	112	4	10	42	56
Devinuwara West	433A	170	3	3	189	7	3	13	166
Gandara Central	437C	145	6	5	232	16	11	15	190
Gandara East	437A	130	6	1	49	3	2	14	30
Gandara South	437B	140	2	2	138	1	2	2	133
Gandara West	437	150	8	1	71	0	0	4	67
Naotunna South	442B	090	4	3	156	4	7	34	111
Thalalla	438C	135	5	3	185	16	6	19	144
Thalalla Central	438A	095	5	1	68	5	2	16	45
Thalalla South	438	080	7	3	142	17	16	24	85
			84	38	2074	88	64	243	1679

*Statistics are given here only for the affected GN divisions

Source: Department of Census and Statistics

Table 1.1c : Number of housing units before and after Tsunami 2004 by affected GN division*: Dickwella DS division of Matara District (Provisional)

Affected GN Division			Number of census blocks		Number of housing units in affected census blocks				
Name	No.	Code	Total Census	Affected Census	Before the disaster	Completely damaged	Partially damaged and cannot be used	Partially damaged and can be used	Not damaged
Batheegama Central	451D	180	8	4	211	0	4	9	198
Batheegama East	451C	175	5	5	283	30	5	57	191
Batheegama West	451E	185	5	1	19	4	0	2	13
Beliwatta	444A	220	7	5	260	59	20	48	133
Dickwella East	452F	145	4	1	72	2	6	17	47
Dickwella South	452E	165	11	10	276	25	11	45	195
Dodampahala Central	453C	130	6	3	136	2	3	16	115
Dodampahala East	453A	125	8	5	254	8	12	17	217
Dodampahala South	453D	140	7	3	158	4	5	13	136
Godauda	440C	235	2	2	127	10	1	2	114
Kottagoda	440	230	5	5	230	42	28	107	53
Lunukalapuwa	440B	240	5	4	232	2	2	10	218
Suduwella	440A	225	5	5	265	40	28	92	105
Wattegama South	451B	170	8	4	266	46	10	82	128
			93	59	2907	278	136	518	1975

*Statistics are given here only for the affected GN divisions

Source: Department of Census and Statistics

Table 1.1d : Number of housing units before and after Tsunami 2004 by affected GN division*: Matara Four Gravets DS division of Matara District (Provisional)

Affected GN Division			Number of census blocks		Number of housing units in affected census blocks				
Name	No.	Code	Total Census	Affected Census	Before the disaster	Completely damaged	Partially damaged and cannot be used	Partially damaged and can be used	Not damaged
Eliyakanda South	416A	325	6	3	210	6	7	65	132
Fort	416C	280	7	6	303	91	14	132	66
Kadeweediya East	417A	195	11	2	60	2	5	19	34
Kadeweediya South	417B	270	7	5	216	5	14	36	161
Kotuwegoda North	416	285	7	7	283	4	4	29	246
Kotuwegoda South	416B	330	7	7	291	13	21	190	67
Madiha East	411B	250	5	5	276	35	14	120	107
Madiha West	411A	230	8	5	313	28	7	92	186
Meddawatta South	425C	320	5	4	240	6	3	7	224
Noope	415	265	4	3	197	0	0	5	192
Pamburana	412B	260	8	8	652	54	24	196	378
Polhena	412	255	10	10	661	121	90	334	116
Thotamuna	412A	275	7	7	523	195	38	142	148
Uyanwatta	417G	185	8	3	176	0	3	11	162
Walgama South	411C	245	7	7	409	0	8	36	365
Weradoowa	425A	180	6	2	98	0	0	4	94
Weragampita	417H	135	10	7	514	0	0	21	493
			128	94	5592	562	252	1449	3329

*Statistics are given here only for the affected GN divisions

Source: Department of Census and Statistics

Table 2 : Number of buildings other than housing units of affected census blocks, before and after Tsunami 2004 by DS division*: Matara District (Provisional)

DS Division	Number of GN Divisions		Number of census blocks in the affected GN divisions		Number of buildings other than housing units in affected census blocks				
	Total GN divisions	Affected GN	Total Census	Affected Census	Before the disaster	Completely damaged	Partially damaged and cannot be used	Partially damaged and can be used	Not damaged
Weligama	48	22	133	106	1,252	117	71	308	756
Dikwella	66	18	93	59	672	83	27	204	358
Devinuwara	48	16	84	38	201	42	8	32	119
Matara Four Gravets	41	18	128	94	1,920	124	46	326	1,424
Total	203	74	438	297	4,045	366	152	870	2,657

*Statistics are given here only for the affected DS divisions

Source: Department of Census and Statistics

**Table 2.1a: Number of buildings other than housing units before and after Tsunami 2004 by GN division*:
Weligama DS division of Matara District (Provisional)**

AffectedGN Division			Number of census blocks		Number of buildings other than housing units in affected census blocks				
Name	No.	Code			Before the disaster	Completely damaged	Partially damaged and cannot be used	Partially damaged and can be used	Not damaged
			Total	Affected					
Bandaramulla	407A	210	5	3	13	2	2	3	6
Denuwala	381C	040	9	5	32	14	0	11	7
Galbokka East	385	115	5	5	142	3	0	10	129
Gurubebila	380A	140	9	9	72	10	5	21	36
Henwala West	405D	165	4	1	7	0	0	2	5
Kamburugamuwa South	408C	225	3	3	56	16	0	19	21
Kamburugamuwa West	408A	230	3	3	40	4	4	8	24
Kapparathota North	386D	200	5	4	23	1	0	2	20
Kapparathota South	386C	195	6	5	30	1	2	6	21
Maha Weediya	382	155	6	4	45	5	0	14	26
Midigama East	380	050	5	3	11	0	0	1	10
Mirissa North	405	185	7	1	1	0	0	0	1
Mirissa South 1	406	205	6	6	47	1	0	9	37
Mirissa South 2	406A	190	7	7	44	5	5	11	23
Mirissa Udupila	405A	180	10	4	56	4	4	8	40
Paranakade	382A	125	11	11	442	17	18	129	278
Pelena North	387C	105	5	5	18	4	1	6	7
Pelena South	387B	160	6	6	29	6	4	12	7
Pelena West	387A	110	5	5	59	10	19	24	6
Polwathumodara	388A	100	3	3	25	2	1	2	20
Thal Aramba East	407C	235	5	5	23	10	1	5	7
Thal Aramba South	407	240	8	8	37	2	5	5	25
			133	106	1252	117	71	308	756

*Statistics are given here only for the affected GN divisions

Source: Department of Census and Statistics

**Table 2.1b: Number of buildings other than housing units before and after Tsunami 2004 by GN Division*:
Devinuwara DS division of Matara District (Provisional)**

AffectedGN Division			Number of census blocks		Number of buildings other than housing units in affected census blocks				
Name	No.	Code	Total	Affected	Before the disaster	Completely damaged	Partially damaged and cannot be used	Partially damaged and can be used	Not damaged
			Devinuwara East	433B					
Devinuwara Nugegoda	433D	165	6	1	6	1	0	5	0
Devinuwara Pradeepagara Pedesa	433H	185	6	2	6	0	1	0	5
Devinuwara Sinhasana Pedesa	433F	200	6	3	12	0	0	1	11
Devinuwara South	433	205	5	4	15	0	0	0	15
Devinuwara Wawwa	433E	180	5	2	6	0	0	0	6
Devinuwara Welegoda	433G	195	4	2	12	3	1	3	5
Devinuwara West	433A	170	3	3	14	0	0	0	14
Gandara Central	437C	145	6	5	36	22	1	7	6
Gandara East	437A	130	6	1	2	2	0	0	0
Gandara South	437B	140	2	2	4	0	0	0	4
Gandara West	437	150	8	1	6	0	0	0	6
Naotunna South	442B	090	4	3	27	0	2	7	18
Thalalla	438C	135	5	3	13	1	0	4	8
Thalalla Central	438A	095	5	1	2	0	0	1	1
Thalalla South	438	080	7	3	26	13	3	2	8
			84	38	201	42	8	32	119

*Statistics are given here only for the affected GN divisions

Source: Department of Census and Statistics

**Table 2.1c: Number of buildings other than housing units before and after Tsunami 2004 by GN Division*:
Dickwella DS division of Matara District (Provisional)**

AffectedGN Division			Number of census blocks		Number of buildings other than housing units in affected census blocks				
Name	No.	Code			Before the disaster	Completely damaged	Partially damaged and cannot be used	Partially damaged and can be used	Not damaged
			Total	Affected					
Bambarenda South	441	195	7	2	1	0	0	0	1
Batheegama Central	451D	180	8	4	21	0	1	1	19
Batheegama East	451C	175	5	5	28	1	1	9	17
Batheegama West	451E	185	5	1	4	1	0	1	2
Beliwatta	444A	220	7	5	45	21	11	9	4
Dickwella East	452F	145	4	1	9	0	1	3	5
Dickwella South	452E	165	11	10	352	18	2	118	214
Dodampahala Central	453C	130	6	3	26	2	3	12	9
Dodampahala East	453A	125	8	5	14	1	1	1	11
Dodampahala South	453D	140	7	3	10	1	1	0	8
Godauda	440C	235	2	2	17	0	0	2	15
Kottagoda	440	230	5	5	25	6	2	12	5
Lunukalapuwa	440B	240	5	4	27	0	0	3	24
Suduwella	440A	225	5	5	19	2	3	5	9
Wattegama South	451B	170	8	4	74	30	1	28	15
			93	59	672	83	27	204	358

*Statistics are given here only for the affected GN divisions

Source: Department of Census and Statistics

Table 2.1d: Number of buildings other than housing units before and after Tsunami 2004 by GN Division*: Matara Four Gravets DS division of Matara District (Provisional)

AffectedGN Division			Number of census blocks		Number of buildings other than housing units in affected census blocks				
Name	No.	Code	Total	Affected	Before the disaster	Completely damaged	Partially damaged and cannot be used	Partially damaged and can be used	Not damaged
			Eliyakanda North	416D					
Eliyakanda South	416A	325	6	3	30	1	3	5	21
Fort	416C	280	7	6	184	10	7	68	99
Kadeweediya East	417A	195	11	2	145	0	2	9	134
Kadeweediya South	417B	270	7	5	180	1	1	10	168
Kotuwegoda North	416	285	7	7	429	3	3	74	349
Kotuwegoda South	416B	330	7	7	367	62	15	101	189
Madiha East	411B	250	5	5	38	11	2	3	22
Madiha West	411A	230	8	5	27	6	0	0	21
Meddawatta South	425C	320	5	4	71	0	0	0	71
Noope	415	265	4	3	22	0	0	0	22
Pamburana	412B	260	8	8	64	6	1	7	50
Polhena	412	255	10	10	62	15	7	34	6
Thotamuna	412A	275	7	7	29	7	4	5	13
Uyanwatta	417G	185	8	3	79	0	0	0	79
Walgama South	411C	245	7	7	94	0	1	10	83
Weradoowa	425A	180	6	2	7	0	0	0	7
Weragampita	417H	135	10	7	24	0	0	0	24
			128	94	1920	124	46	326	1424

*Statistics are given here only for the affected GN divisions

Source: Department of Census and Statistics

Table 3 : Population in the affected census blocks before and after Tsunami 2004 by DS division*: Matara District (Provisional)

DS Division	Number of GN Divisions		Number of census blocks in the affected GN divisions		Number of persons in the affected census blocks		
	Total GN divisions	Affected GN divisions	Total Census Blocks	Affected Census Blocks	Before the disaster	Presently living within the GN division	Presently living outside the GN division
Weligama	48	22	133	106	25,506	20,549	4,601
Dikwella	66	18	93	59	13,045	10,884	1,980
Devinuwara	48	16	84	38	9,405	8,549	816
Matara Four Gravets	41	18	128	94	25,546	20,860	4,132
Total	203	74	438	297	73,502	60,842	11,529

*Statistics are given here only for the affected DS divisions

Note: No. of people in affected Census Blocks includes the population living in housing units as well as buildings other than housing units

Source: Department of Census and Statistics

Table 3.1a: Population in the affected census blocks before and after Tsunami 2004 by GN division*: Weligama DS division of Matara District (Provisional)

Affected GN Division			Number of census blocks		Number of persons in the affected census blocks		
Name	No.	Code	Total	Affected	Before the disaster	Presently living within the GN division	Presently living outside the GN division
			Bandaramulla	407A			
Denuwala	381C	040	9	5	874	515	335
Galbokka East	385	115	5	5	1,432	1,278	151
Gurubebila	380A	140	9	9	1,703	1,693	6
Henwala West	405D	165	4	1	243	226	17
Kamburugamuwa South	408C	225	3	3	649	435	208
Kamburugamuwa West	408A	230	3	3	719	564	125
Kapparathota North	386D	200	5	4	1,466	1,459	4
Kapparathota South	386C	195	6	5	1,277	1,201	75
Maha Weediya	382	155	6	4	1,216	837	356
Midigama East	380	050	5	3	710	710	0
Mirissa North	405	185	7	1	66	66	0
Mirissa South 1	406	205	6	6	1,388	1,273	112
Mirissa South 2	406A	190	7	7	2,214	2,047	160
Mirissa Udupila	405A	180	10	4	658	653	3
Paranakade	382A	125	11	11	2,129	1,243	777
Pelena North	387C	105	5	5	1,335	1,108	209
Pelena South	387B	160	6	6	1,830	747	1,025
Pelena West	387A	110	5	5	1,654	1,287	339
Polwathumodara	388A	100	3	3	764	715	49
Thal Aramba East	407C	235	5	5	737	513	193
Thal Aramba South	407	240	8	8	1,618	1,196	418
			133	106	25,506	20,549	4,601

Note: No. of people in affected Census Blocks includes the population living in housing units as well as buildings other than housing units

*Statistics are given here only for the affected GN divisions, Source: Department of Census and Statistics

**Table 3.1b: Population in the affected census blocks before and after Tsunami 2004 by GN Division*:
Devinuwara DS division of Matara District (Provisional)**

AffectedGN Division			Number of census blocks		Number of persons in the affected census blocks		
Name	No.	Code	Total	Affected	Before the disaster	Presently living within the GN division	Presently living outside the GN division
Devinuwara East	433B	175	6	2	400	387	13
Devinuwara Nugegoda	433D	165	6	1	249	215	33
Devinuwara Pradeepagara Pedesa	433H	185	6	2	552	522	29
Devinuwara Sinhasana Pedesa	433F	200	6	3	653	619	33
Devinuwara South	433	205	5	4	907	893	13
Devinuwara Wawwa	433E	180	5	2	567	567	0
Devinuwara Welegoda	433G	195	4	2	537	452	75
Devinuwara West	433A	170	3	3	867	795	71
Gandara Central	437C	145	6	5	1,056	876	174
Gandara East	437A	130	6	1	229	176	53
Gandara South	437B	140	2	2	673	645	26
Gandara West	437	150	8	1	304	304	0
Naotunna South	442B	090	4	3	649	624	23
Thalalla	438C	135	5	3	794	692	93
Thalalla Central	438A	095	5	1	306	279	23
Thalalla South	438	080	7	3	662	503	157
			84	38	9,405	8,549	816

Note: No. of people in affected Census Blocks includes the population living in housing units as well as buildings other than housing units

*Statistics are given here only for the affected GN divisions, Source: Department of Census and Statistics

Table 3.1c: Population in the affected census blocks before and after Tsunami 2004 by GN Division*: Dickwella DS division of Matara District (Provisional)

AffectedGN Division			Number of census blocks		Number of persons in the affected census blocks		
Name	No.	Code	Total	Affected	Before the disaster	Presently living within the GN division	Presently living outside the GN division
			Bambarenda South	441			
Batheegama Central	451D	180	8	4	998	998	0
Batheegama East	451C	175	5	5	1,426	1,220	189
Batheegama West	451E	185	5	1	111	106	5
Beliwatta	444A	220	7	5	1,188	770	364
Dickwella East	452F	145	4	1	297	297	0
Dickwella South	452E	165	11	10	1,189	1,002	183
Dodampahala Central	453C	130	6	3	614	589	23
Dodampahala East	453A	125	8	5	1,087	1,044	42
Dodampahala South	453D	140	7	3	675	654	19
Godauda	440C	235	2	2	438	408	26
Kottagoda	440	230	5	5	1,079	656	381
Lunukalapuwa	440B	240	5	4	994	953	40
Suduwella	440A	225	5	5	1,296	750	509
Wattegama South	451B	170	8	4	1,132	939	176
			93	59	13,045	10,884	1,980

Note: No. of people in affected Census Blocks includes the population living in housing units as well as buildings other than housing units

*Statistics are given here only for the affected GN divisions, Source: Department of Census and Statistics

**Table 3.1d: Population in the affected census blocks before and after Tsunami 2004 by GN Division*: Matara
Four Gravets DS division of Matara District (Provisional)**

AffectedGN Division			Number of census blocks		Number of persons in the affected census blocks		
Name	No.	Code	Total	Affected	Before the disaster	Presently living within the GN division	Presently living outside the GN division
Eliyakanda North	416D	290	5	3	676	676	0
Eliyakanda South	416A	325	6	3	1,186	1,115	111
Fort	416C	280	7	6	1,927	801	950
Kadeweediya East	417A	195	11	2	276	273	0
Kadeweediya South	417B	270	7	5	1,362	1,330	29
Kotuwegoda North	416	285	7	7	1,361	1,284	52
Kotuwegoda South	416B	330	7	7	1,575	1,305	135
Madiha East	411B	250	5	5	1,179	898	271
Madiha West	411A	230	8	5	1,260	1,117	140
Meddawatta South	425C	320	5	4	1,044	1,021	23
Noope	415	265	4	3	797	797	0
Pamburana	412B	260	8	8	2,726	2,008	678
Polhena	412	255	10	10	2,901	2,001	804
Thotamuna	412A	275	7	7	2,333	1,301	934
Uyanwatta	417G	185	8	3	773	773	0
Walgama South	411C	245	7	7	1,709	1,701	5
Weradoowa	425A	180	6	2	445	445	0
Weragampita	417H	135	10	7	2,016	2,014	0
			128	94	25,546	20,860	4,132

Note: No. of people in affected Census Blocks includes the population living in housing units as well as buildings other than housing units

*Statistics are given here only for the affected GN divisions, Source: Department of Census and Statistics