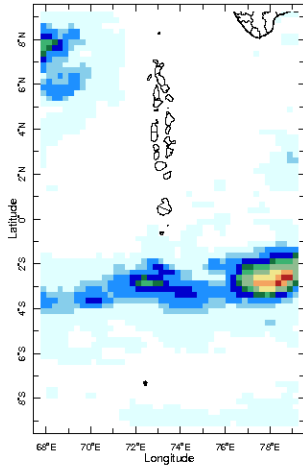


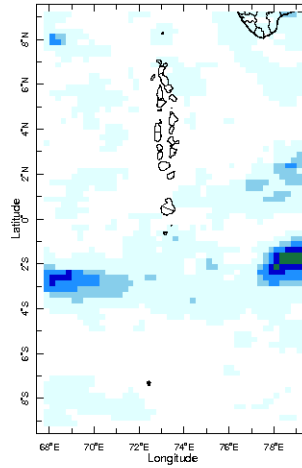


Daily Rainfall Monitoring

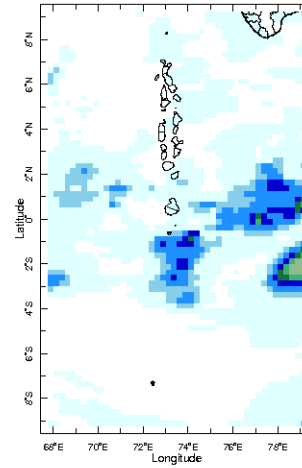
The following figures show the observed rainfall in the last 15 days in Maldives.



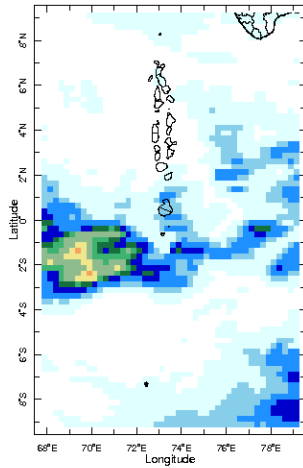
17 Aug 2022



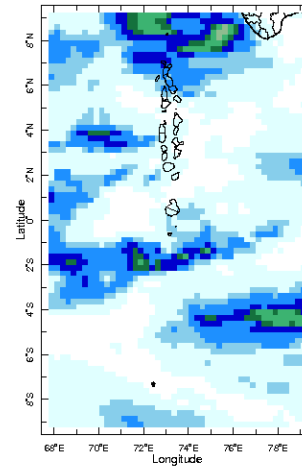
18 Aug 2022



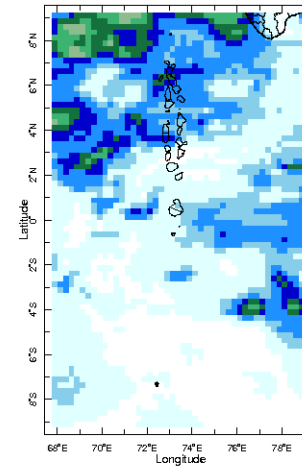
19 Aug 2022



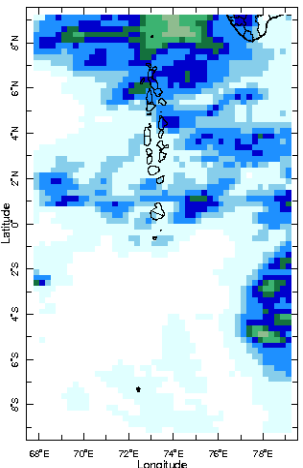
20 Aug 2022



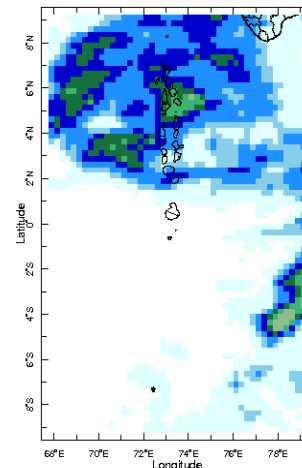
21 Aug 2022



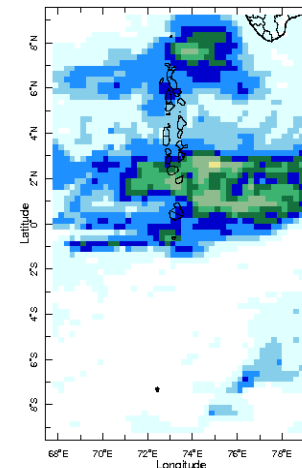
22 Aug 2022



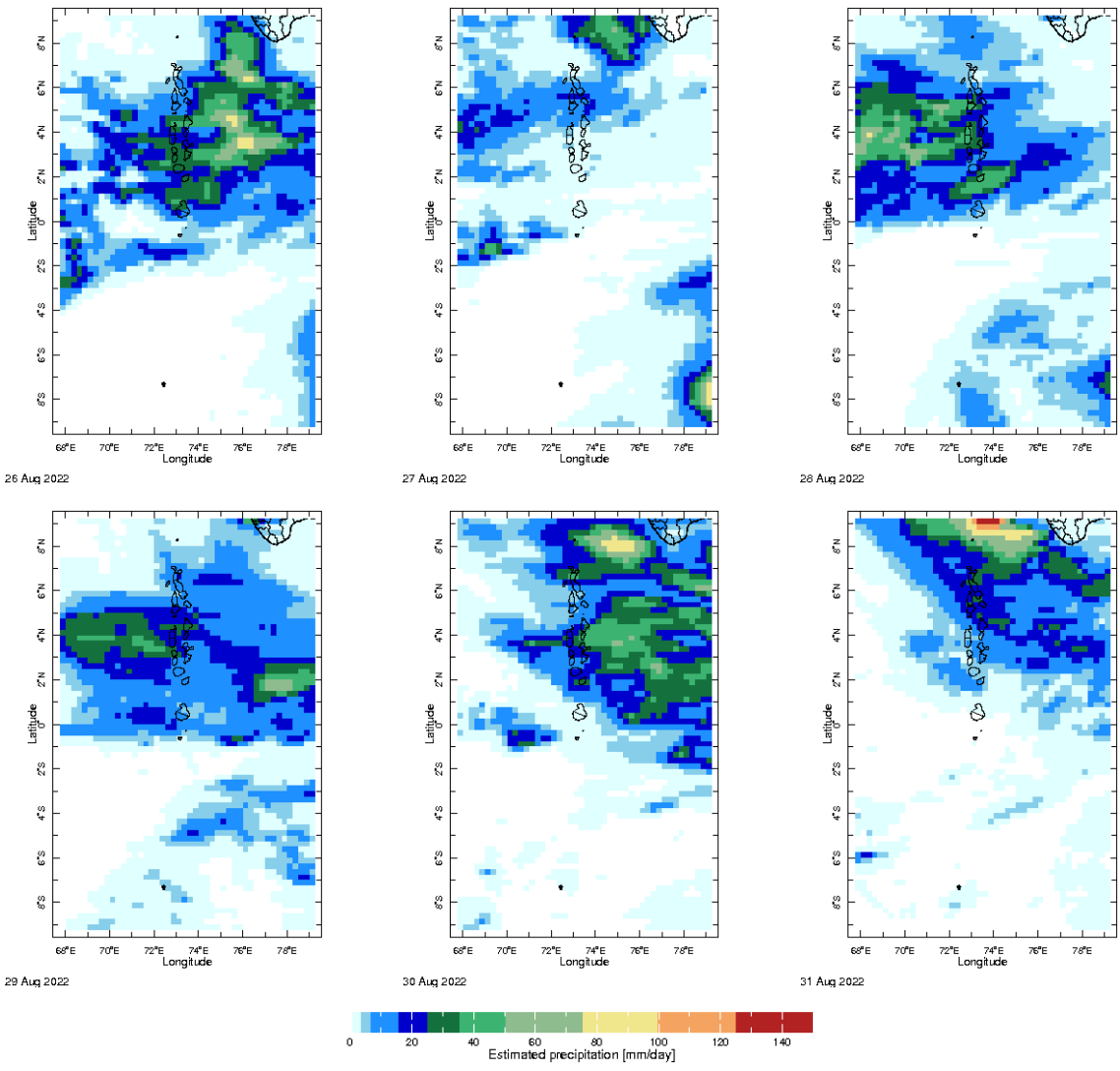
23 Aug 2022



24 Aug 2022

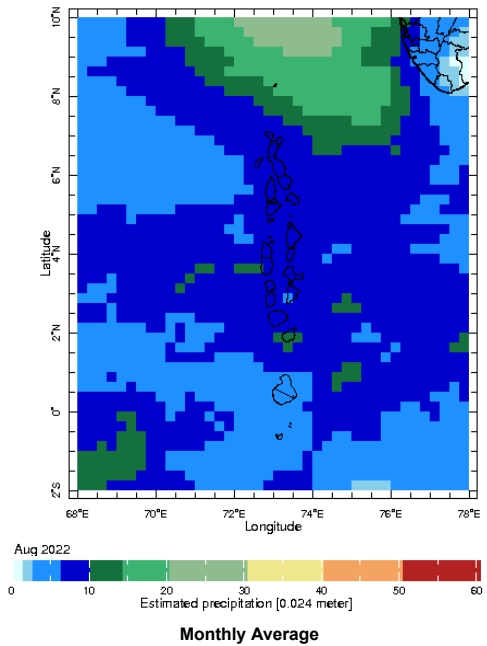


25 Aug 2022



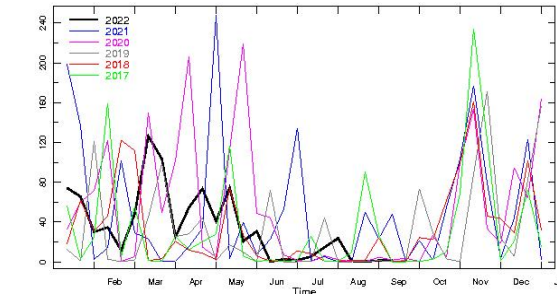
Monthly Rainfall Monitoring

The figure shows the average observed rainfall in the previous month.



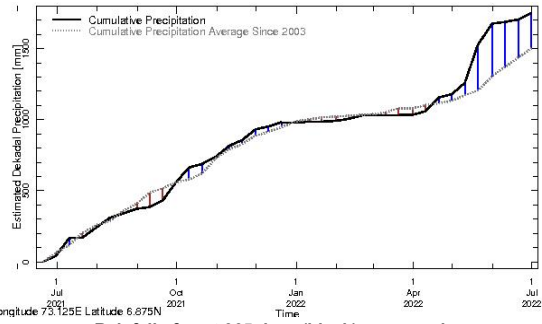
Monthly and Seasonal Monitoring

Northern Maldives:



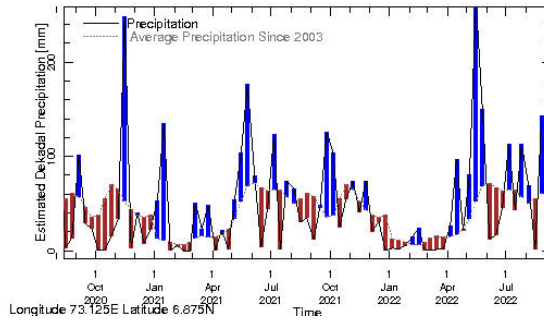
Longitude 73.125E Latitude 6.875N

Rainfall in the current year (black) compared to rainfall in previous 5 years



Longitude 73.125E Latitude 6.875N

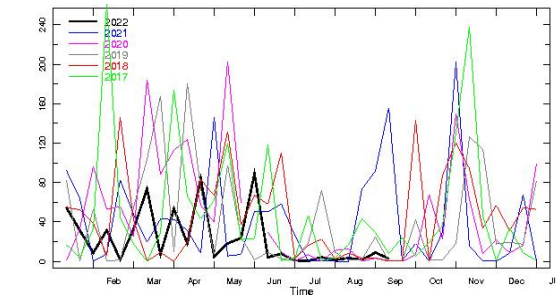
Rainfall of past 365 days (black) compared to average rainfall since 2003.



Longitude 73.125E Latitude 6.875N

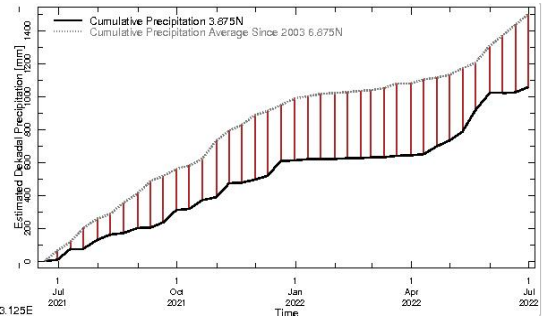
Rainfall in the past 5 years with above-average rainfall hatched in blue and below-average hatched in brown

Central Maldives:



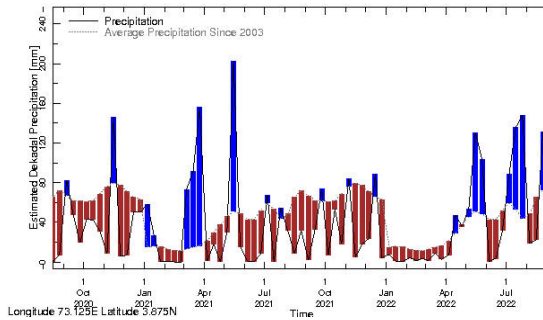
Longitude 73.125E Latitude 3.875N

Rainfall in the current year (black) compared to rainfall in previous 5 years



73.125E

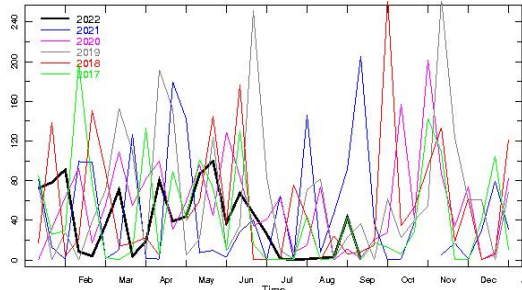
Rainfall of past 365 days (black) compared to average rainfall since 2003.



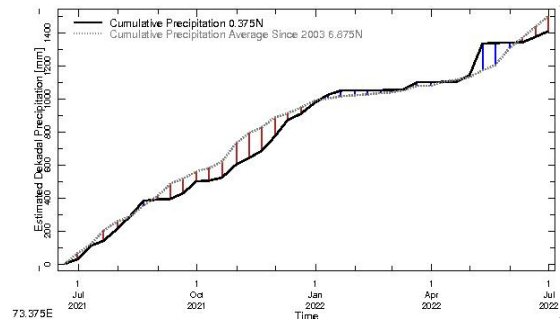
Longitude 73.125E Latitude 3.875N

Rainfall in the past 5 years with above-average rainfall hatched in blue and below-average hatched in brown

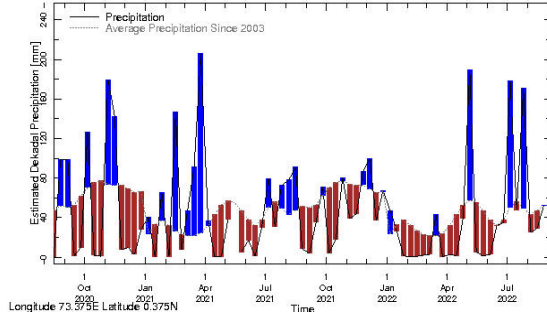
Southern Maldives:



Longitude 73.375E Latitude 0.375N
Rainfall in the current year (black) compared to rainfall in previous 5 years

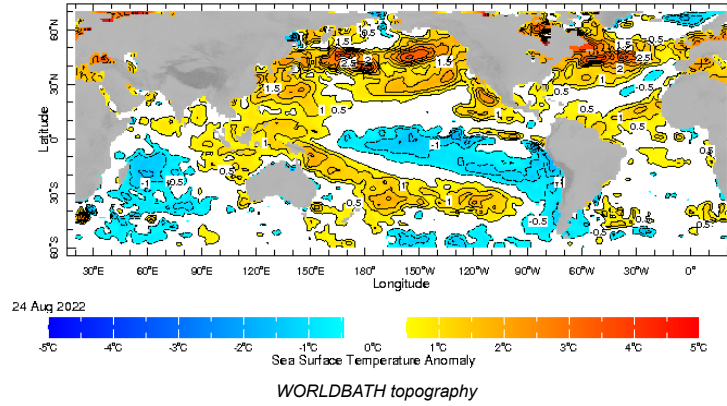


Rainfall of past 365 days (black) compared to average rainfall since 2003.

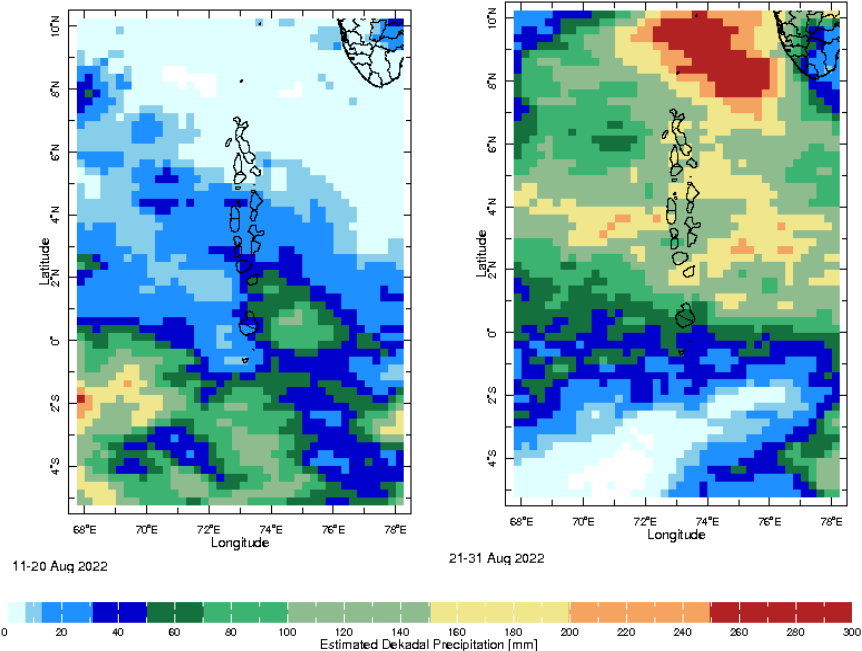


Rainfall in the past 5 years with above-average rainfall hatched in blue and below-average hatched in brown

Ocean Surface Monitoring

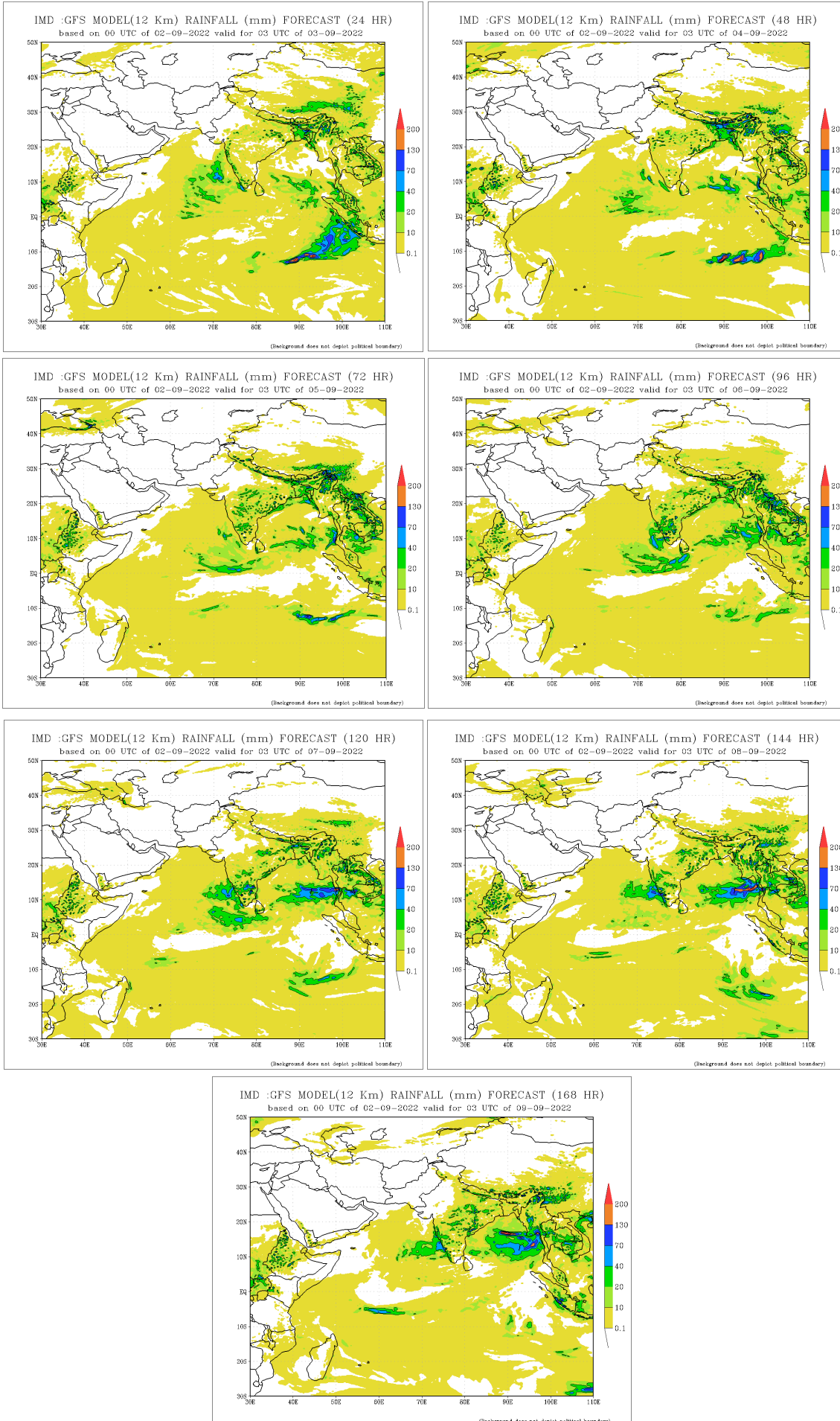


Dekadal (10 Day) Satellite Derived Rainfall Estimates

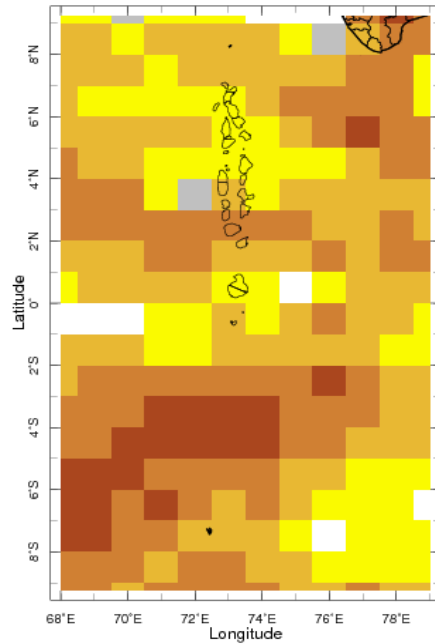


Daily Rainfall Forecast

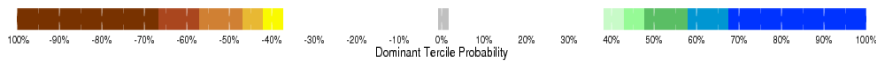
Daily Rainfall forecasts (up to 7 days ahead) from the IMD is provided in figures below. These predictions are from the GFS (T1534) model covering the entire south Asian region.



Bi-weekly Precipitation Forecast



10-23 Sep 2022 IRI SubX Precipitation Forecast issued 0000 z

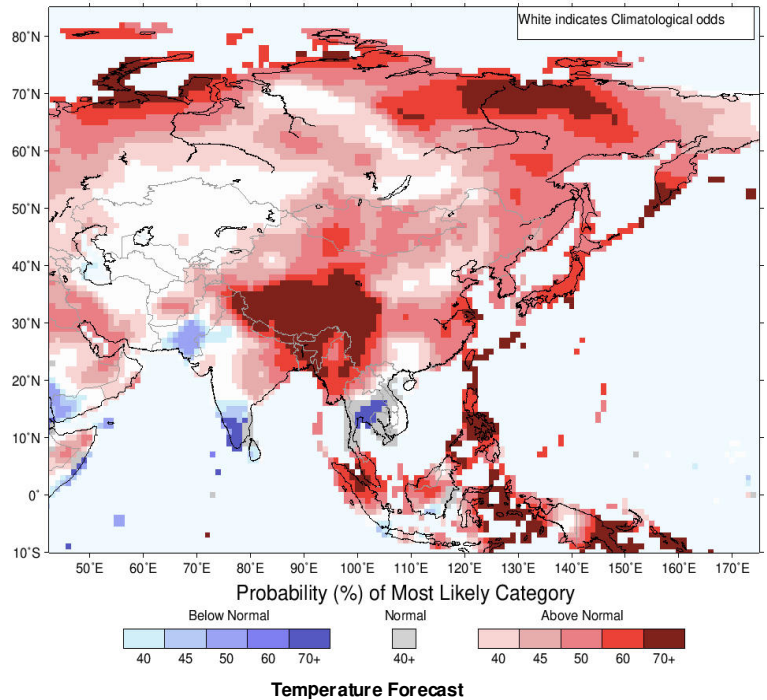
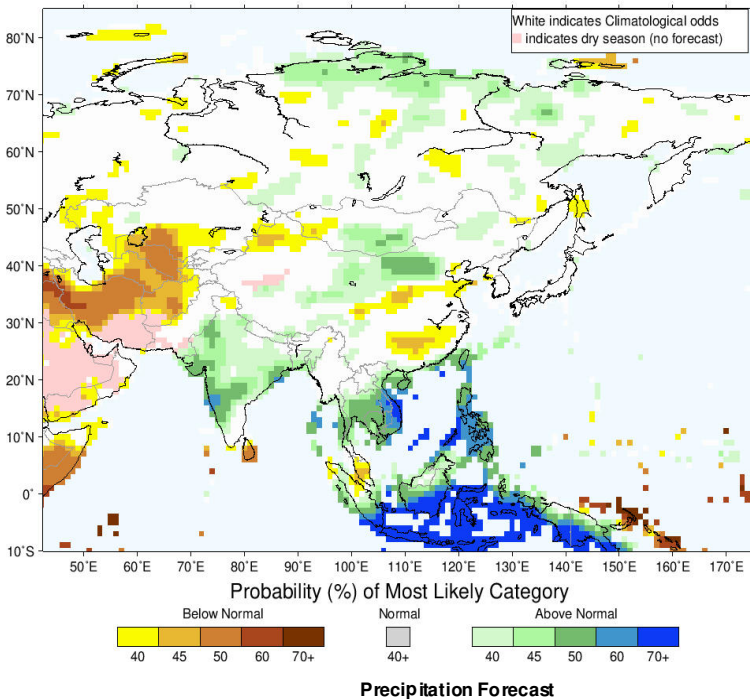


Seasonal Rainfall and Temperature Forecast

Following is the latest seasonal precipitation and temperature prediction for the next 3 months by the IRI. The color shading indicates the probability of the most dominant tercile -- that is, the tercile having the highest forecast probability. The color bar alongside the map defines these dominant tercile probability levels. The upper side of the color bar shows the colors used for increasingly strong probabilities when the dominant tercile is the above-normal tercile, while the lower side shows likewise for the below-normal tercile. The gray color indicates an enhanced probability for the near-normal tercile (nearly always limited to 40%).

IRI Multi-Model Probability Forecast for Precipitation for September-October-November 2022, Issued August 2022

IRI Multi-Model Probability Forecast for Temperature for September-October-November 2022, Issued August 2022



Subscribe to our Monthly Maldives Newsletter

email address

Subscribe

Follow @fectmv

Contact Us
email: fectmv@gmail.com
phone: (+96) 07 788010
blog: www.fectmv.blogspot.com

Foundation for Environment, Climate & Technology,
REM, Madhrasaadhoshuge,
Henveiru, Hadheebee Magu,
Male', 20184,
Maldives