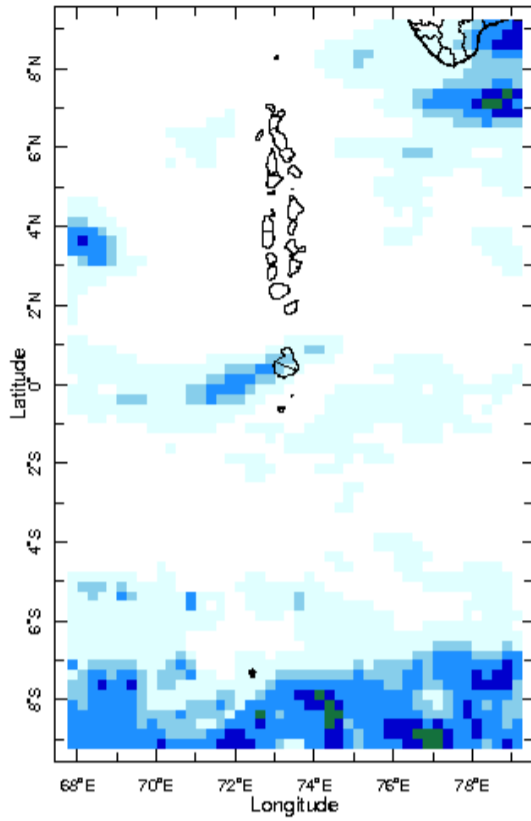
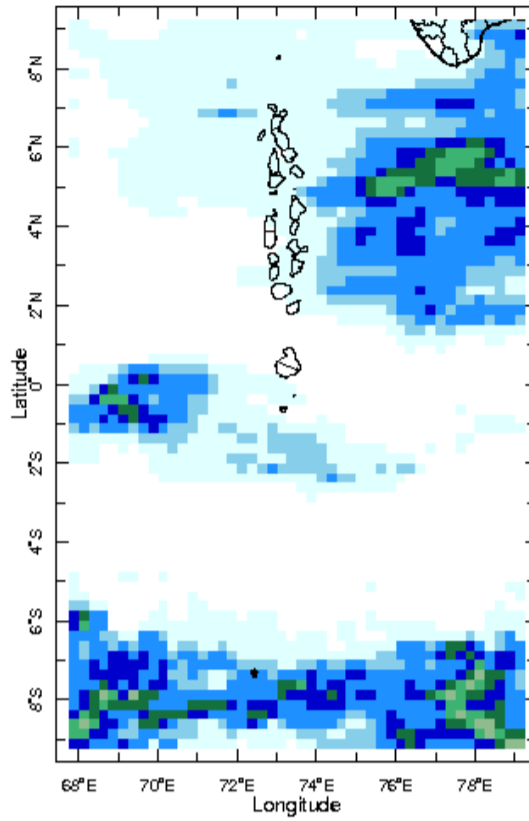


Daily Rainfall Monitoring

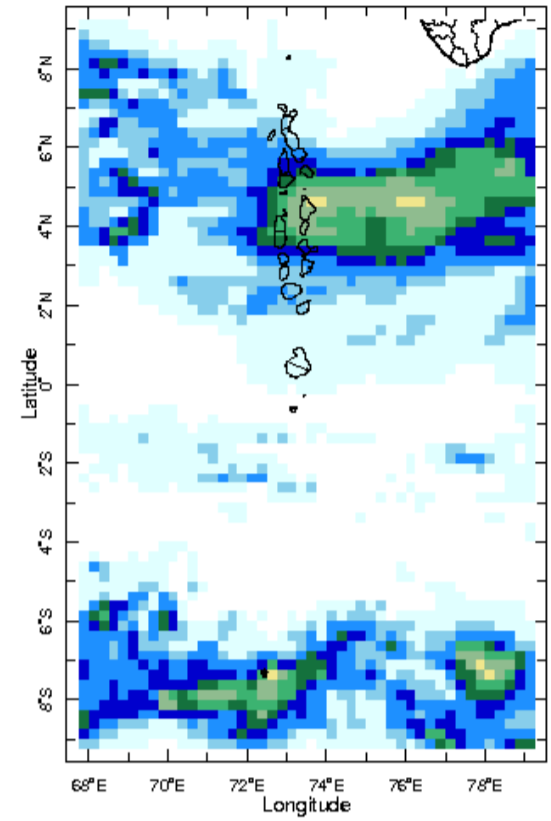
The following figures show the observed rainfall in the last 15 days in Maldives.



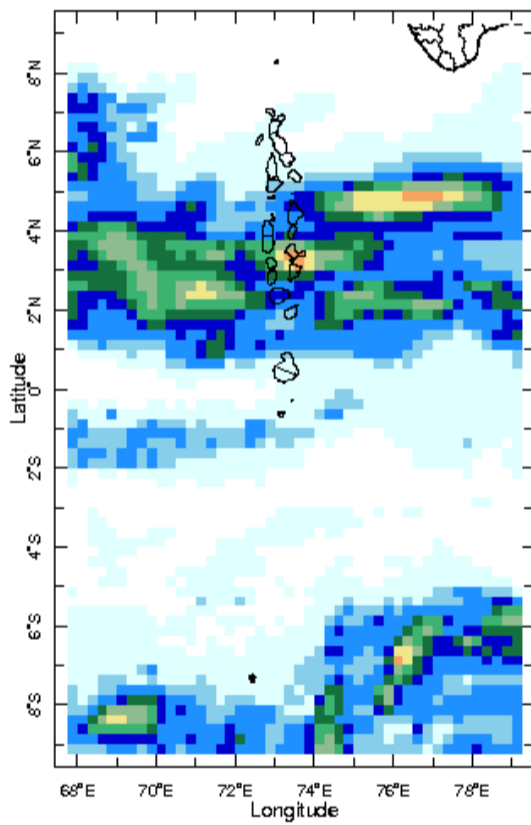
16 Dec 2025



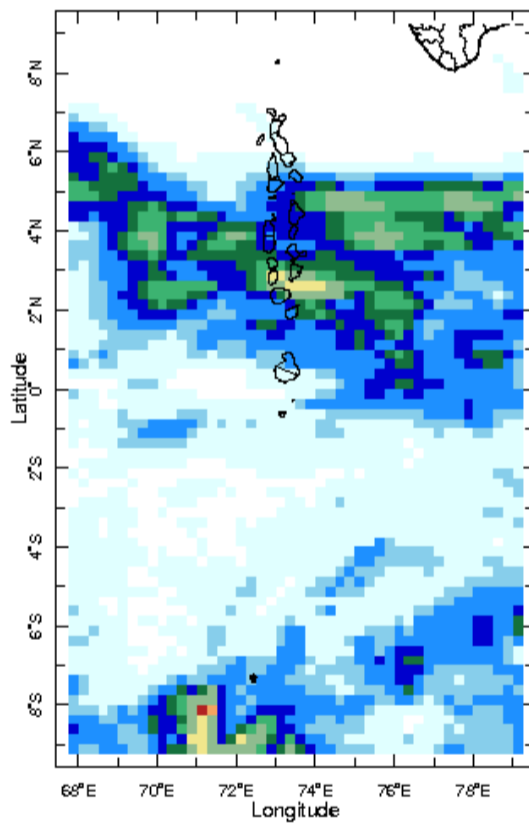
17 Dec 2025



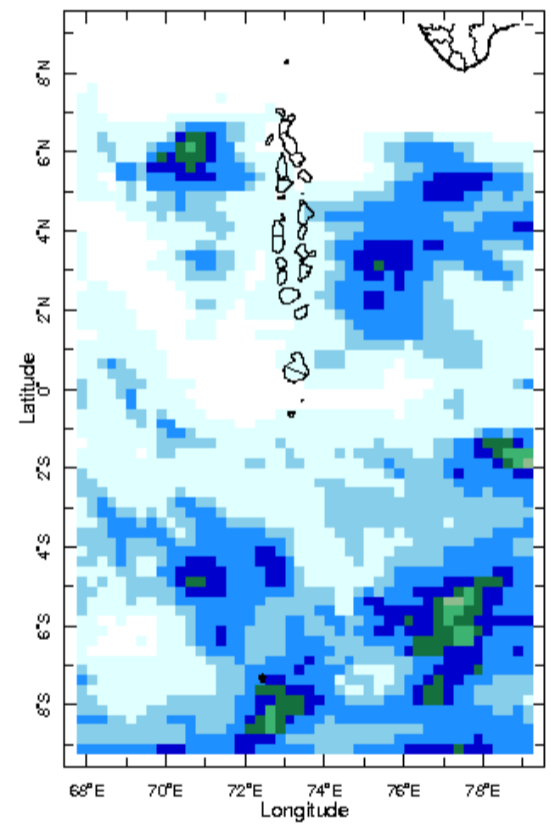
18 Dec 2025



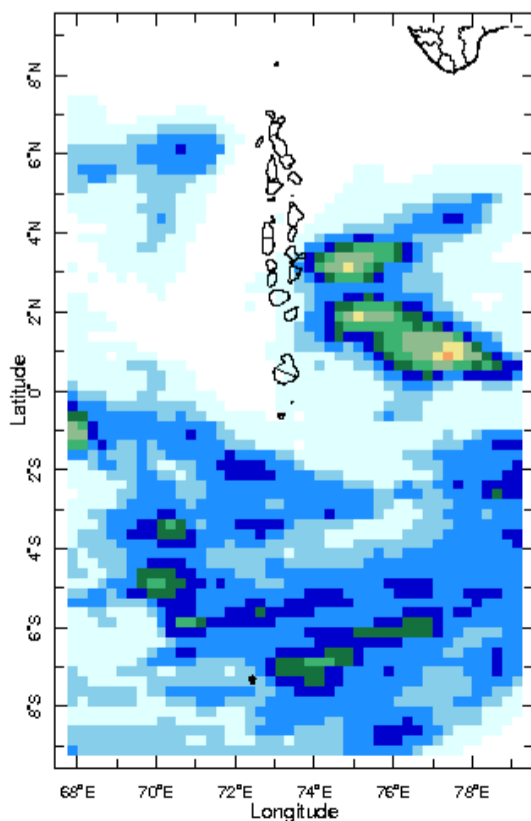
19 Dec 2025



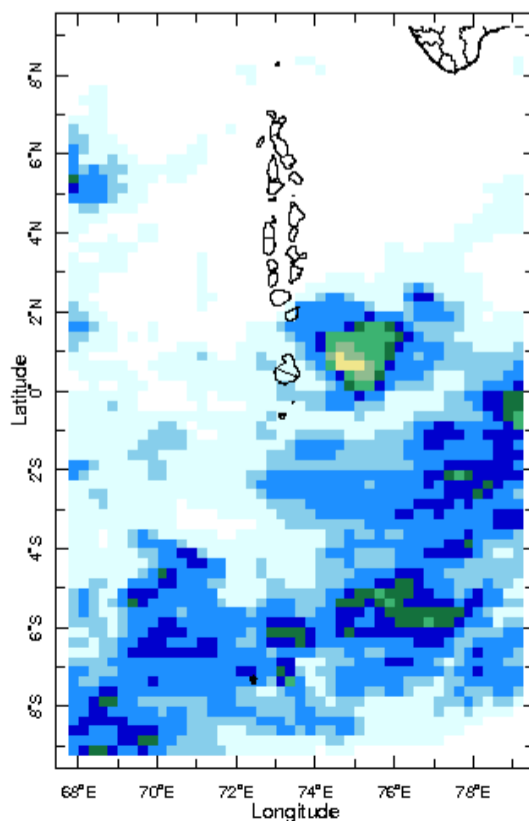
20 Dec 2025



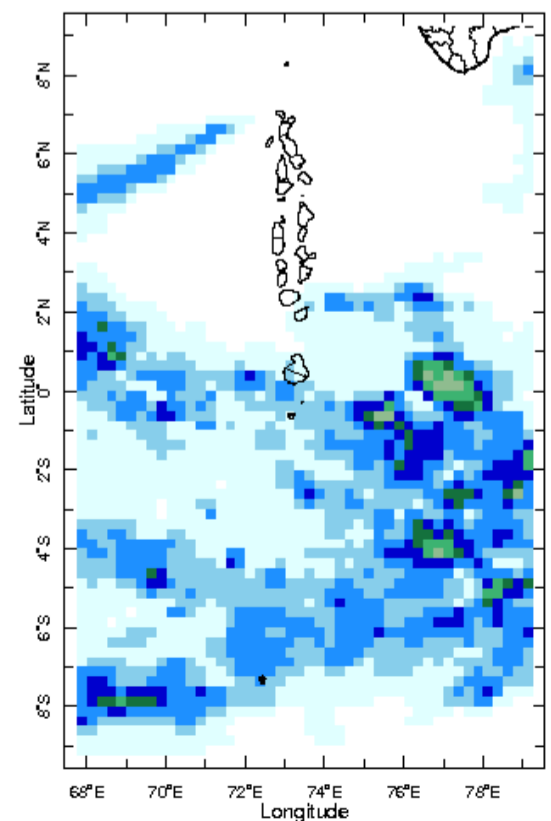
21 Dec 2025



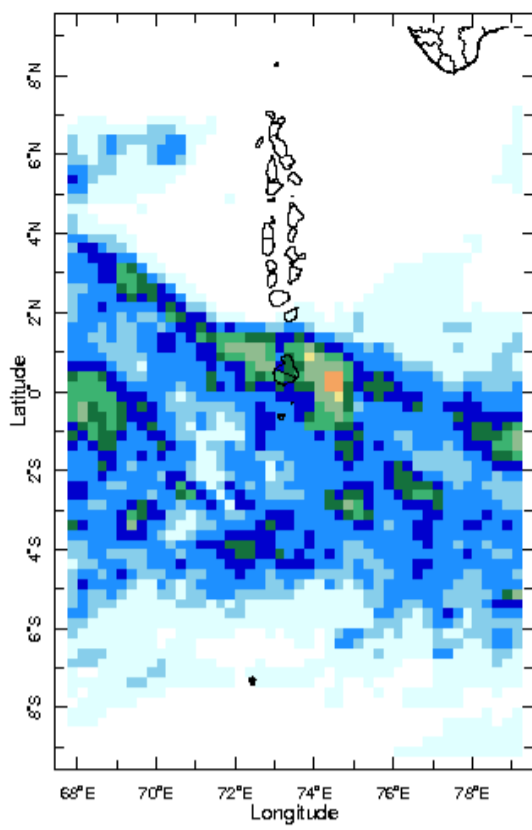
22 Dec 2025



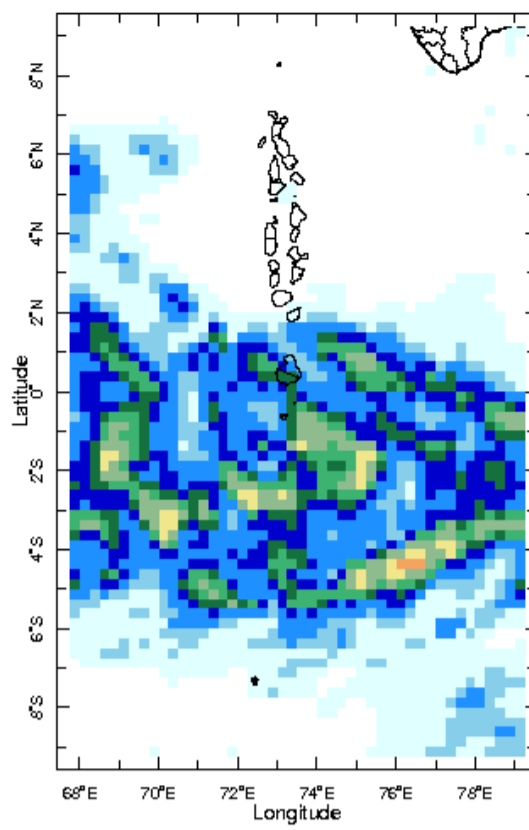
23 Dec 2025



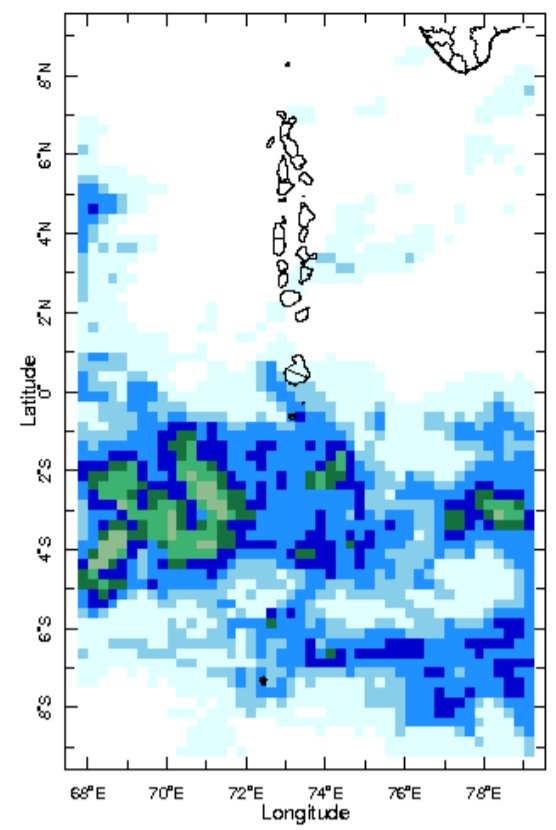
24 Dec 2025



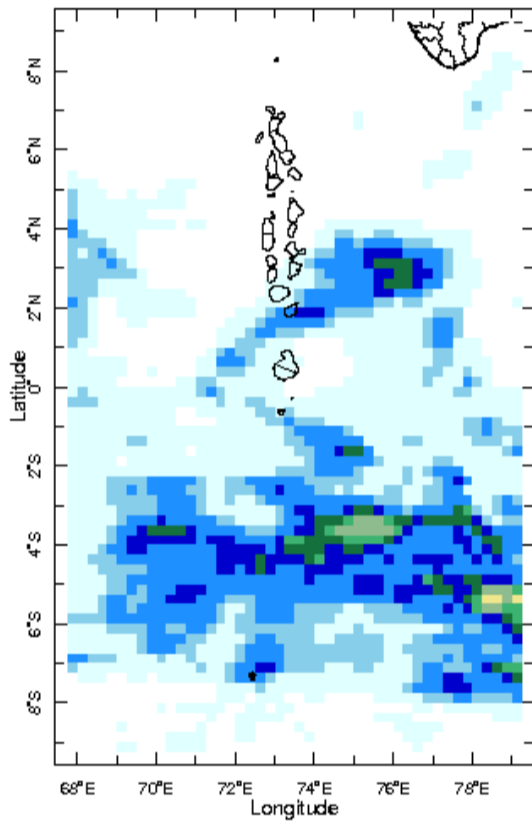
25 Dec 2025



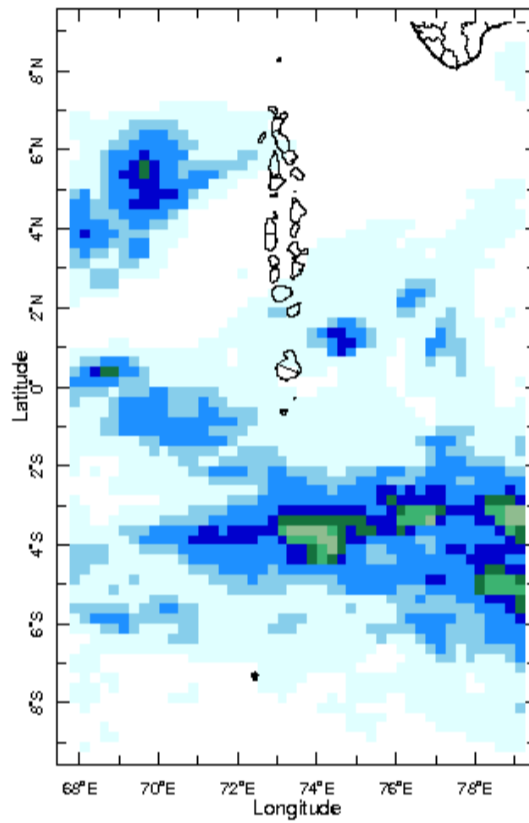
26 Dec 2025



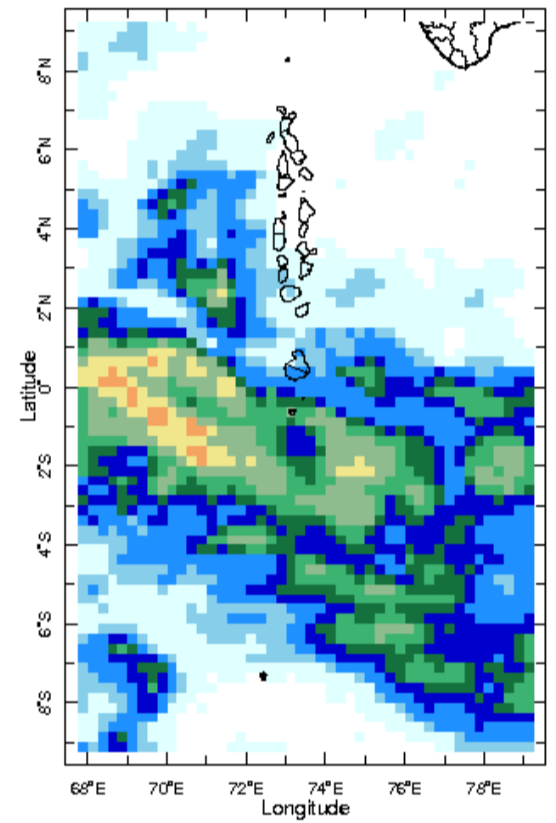
27 Dec 2025



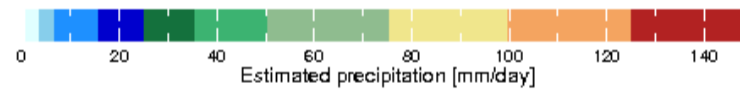
28 Dec 2025



29 Dec 2025

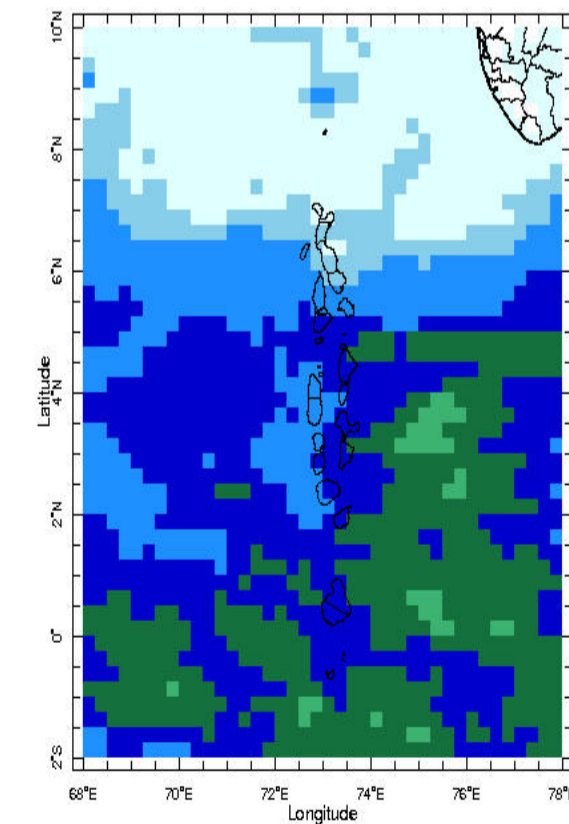


30 Dec 2025

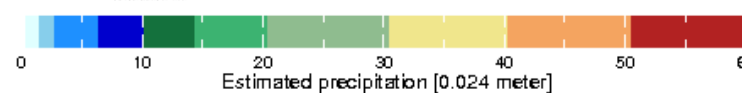


Monthly Rainfall Monitoring

The figure shows the average observed rainfall in the previous month.



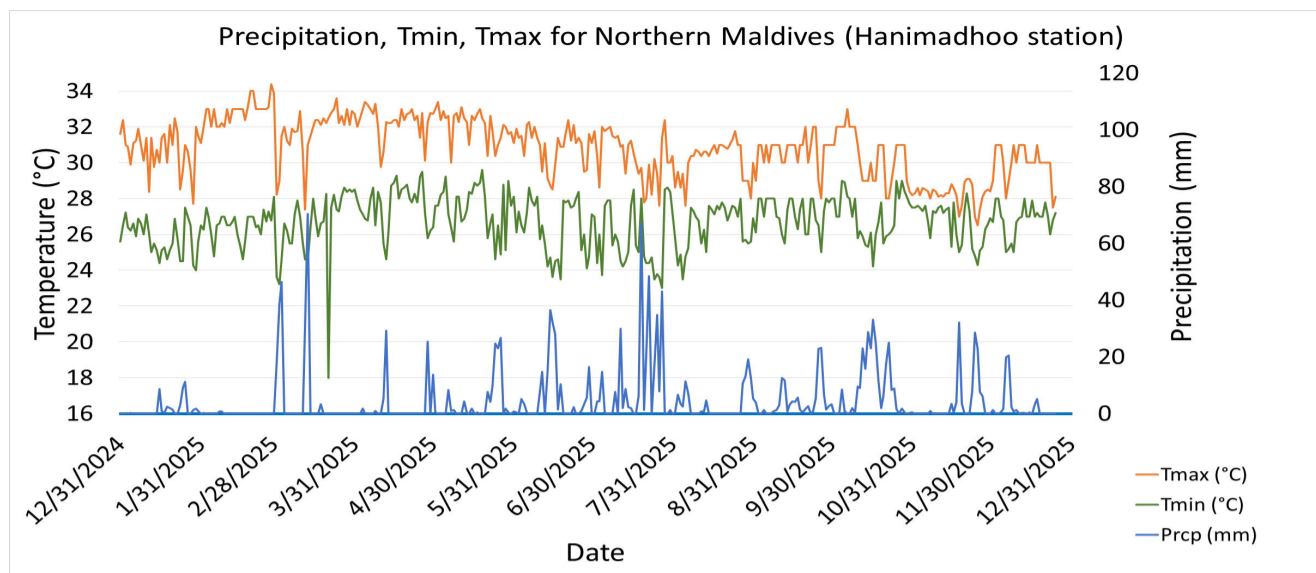
Dec 2025



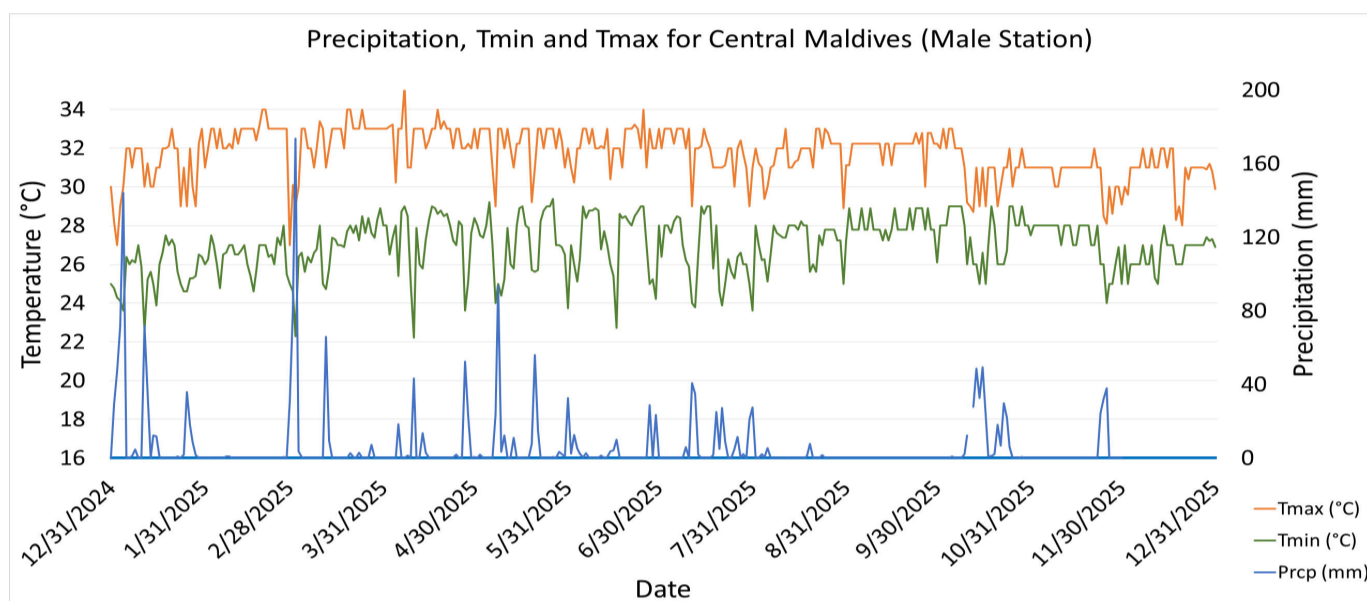
Monthly Average

Monthly and Seasonal Monitoring

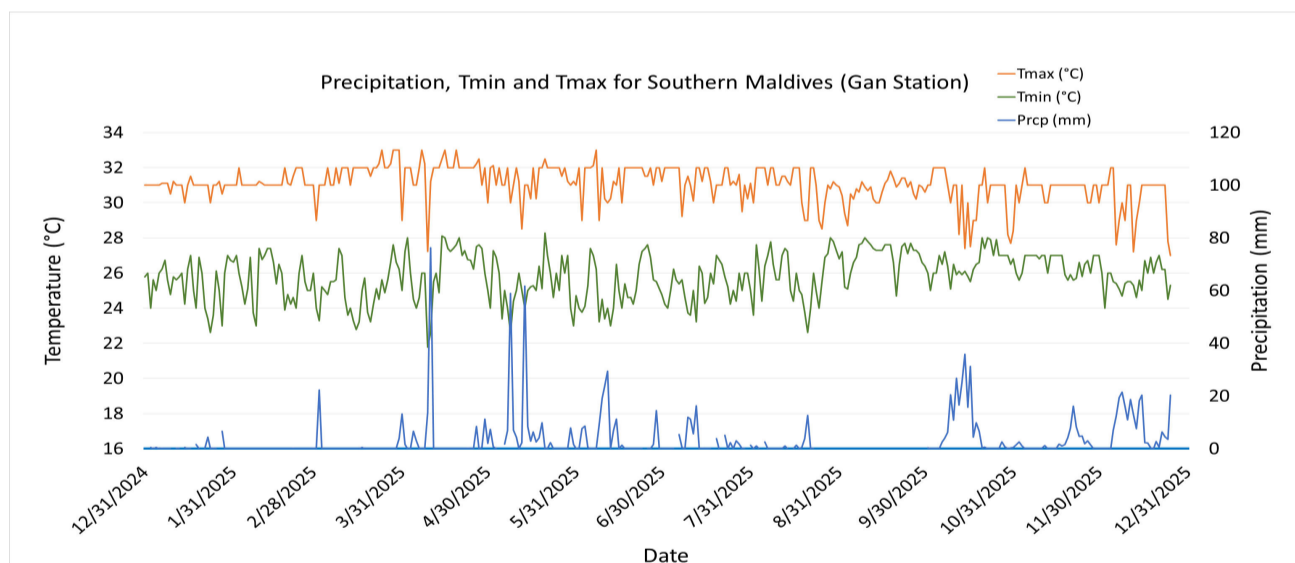
Northern Maldives:



Central Maldives:

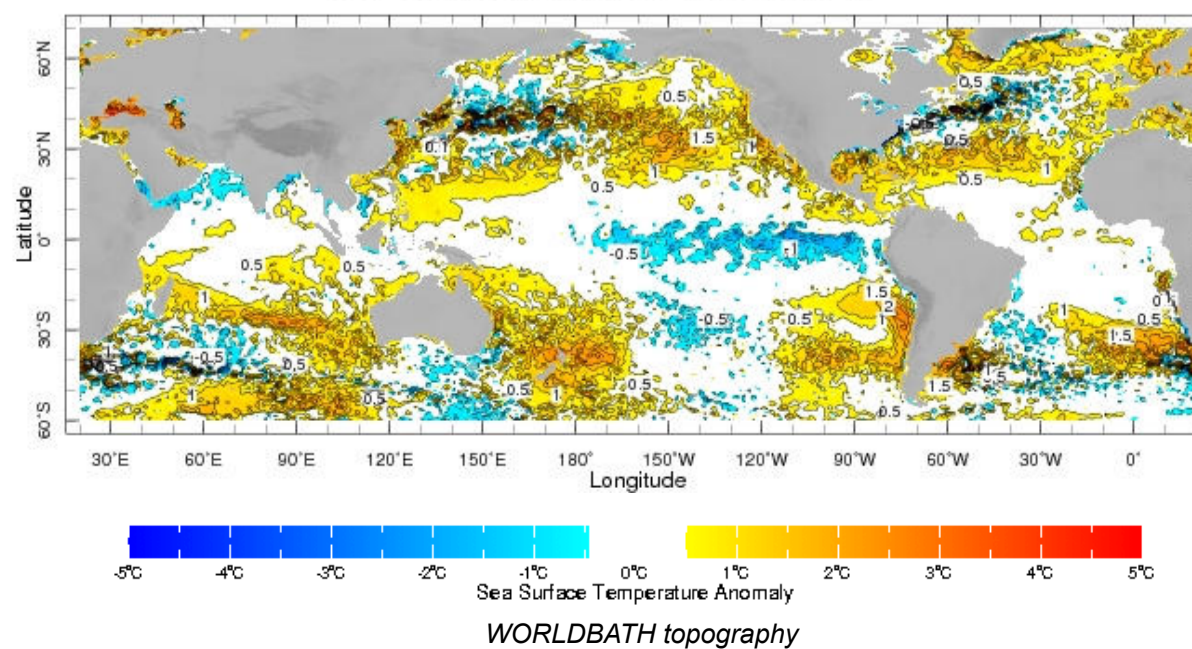


Southern Maldives:

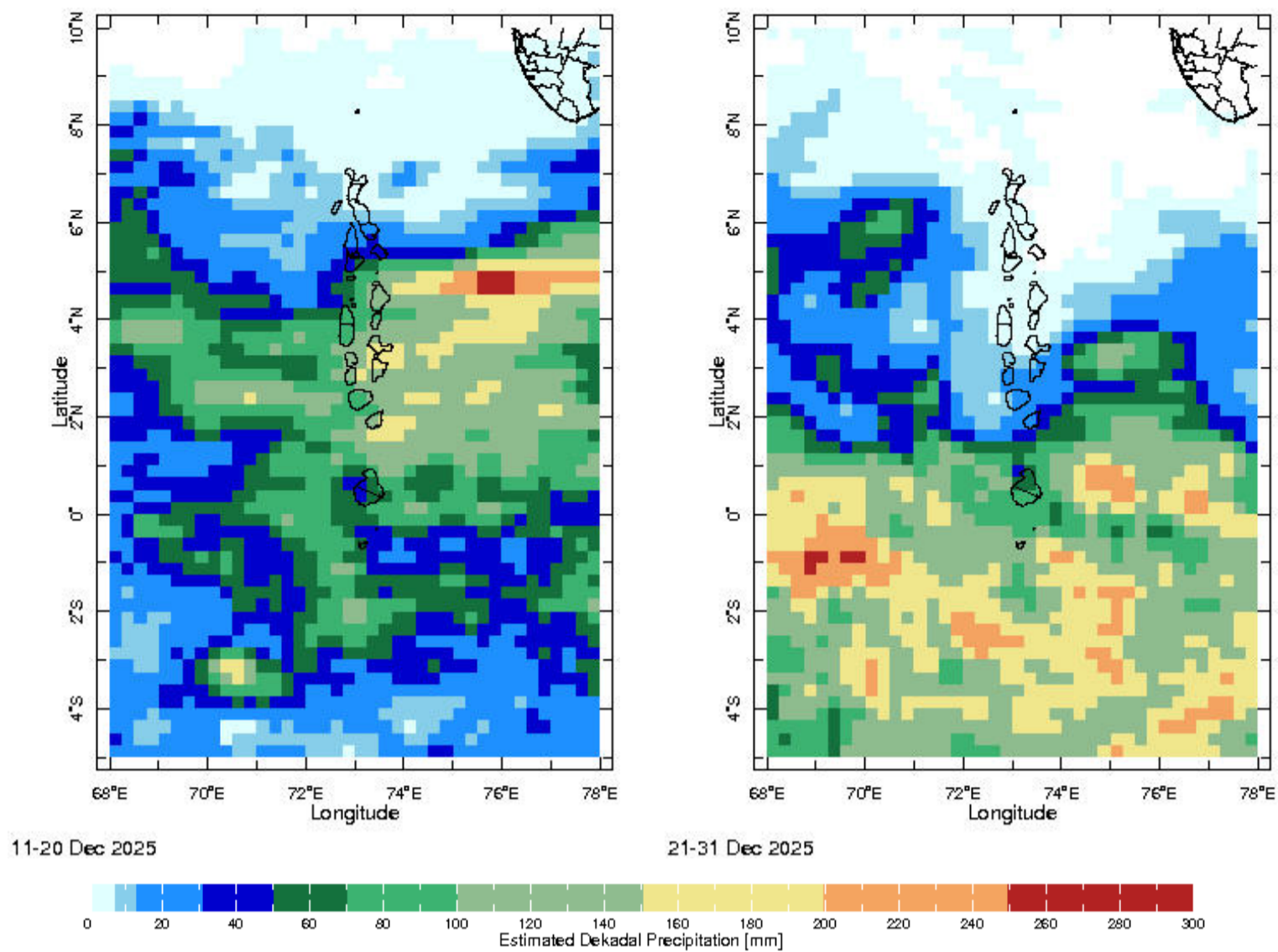


Ocean Surface Monitoring

zlev 0.0 meters Time 9-15 Dec 2025

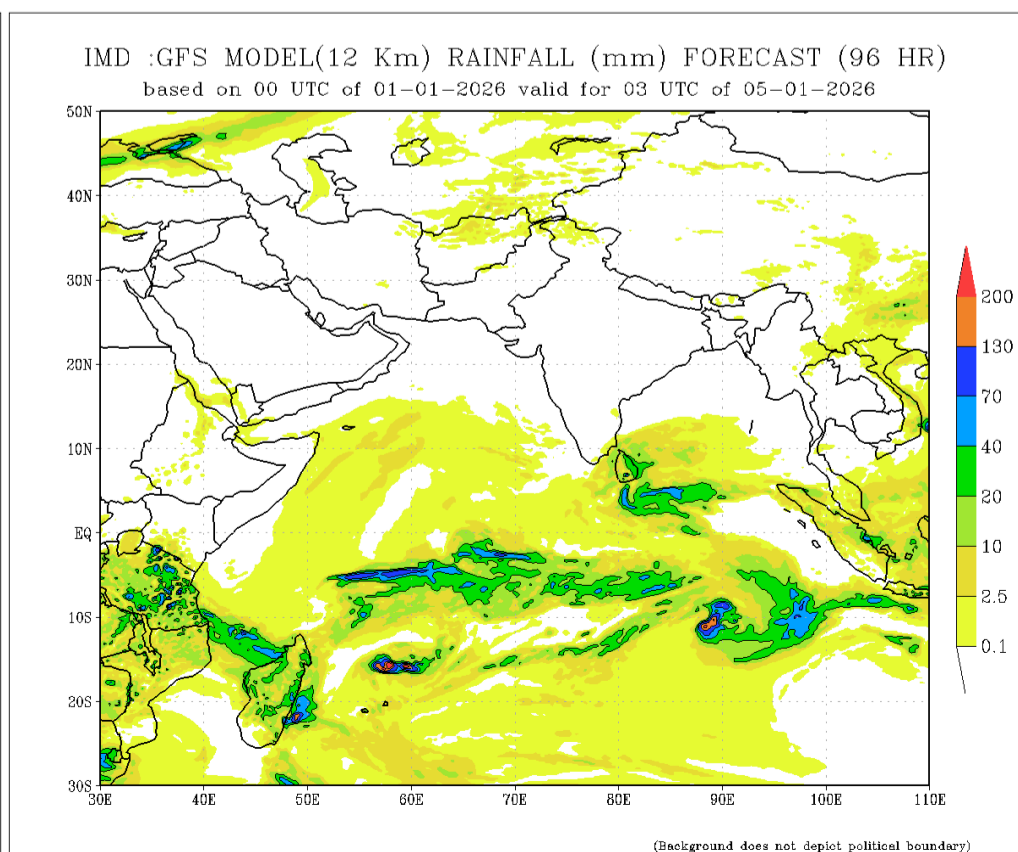
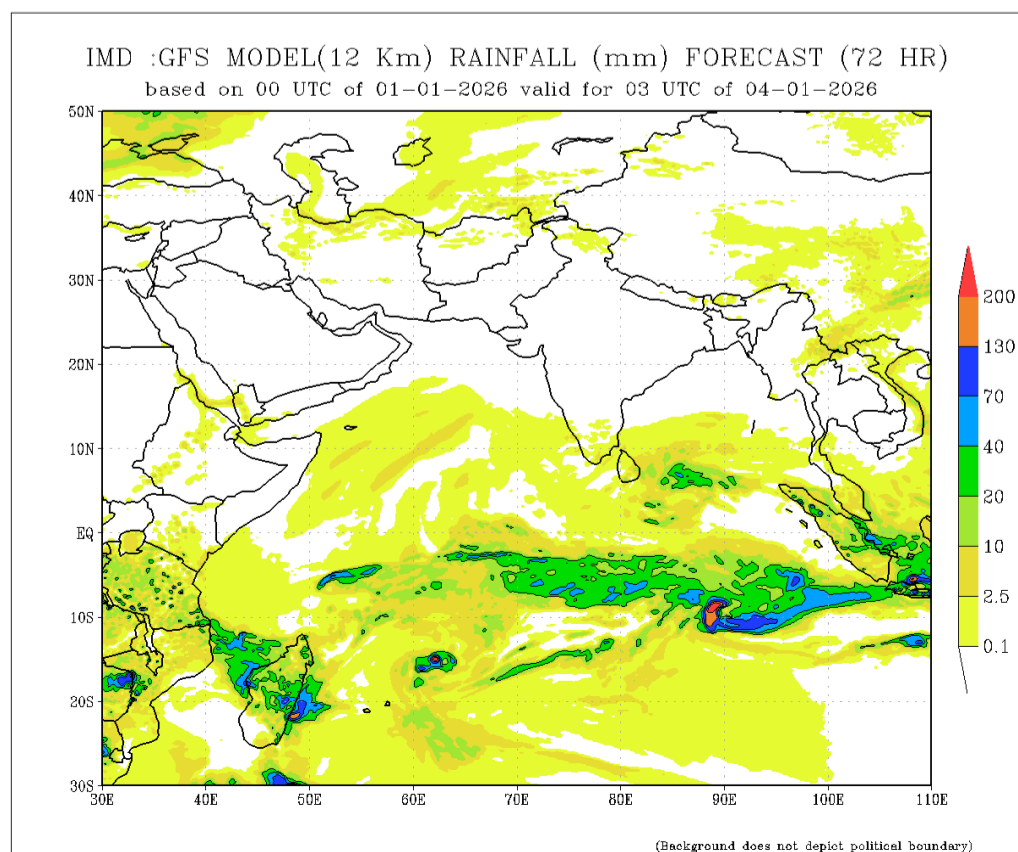
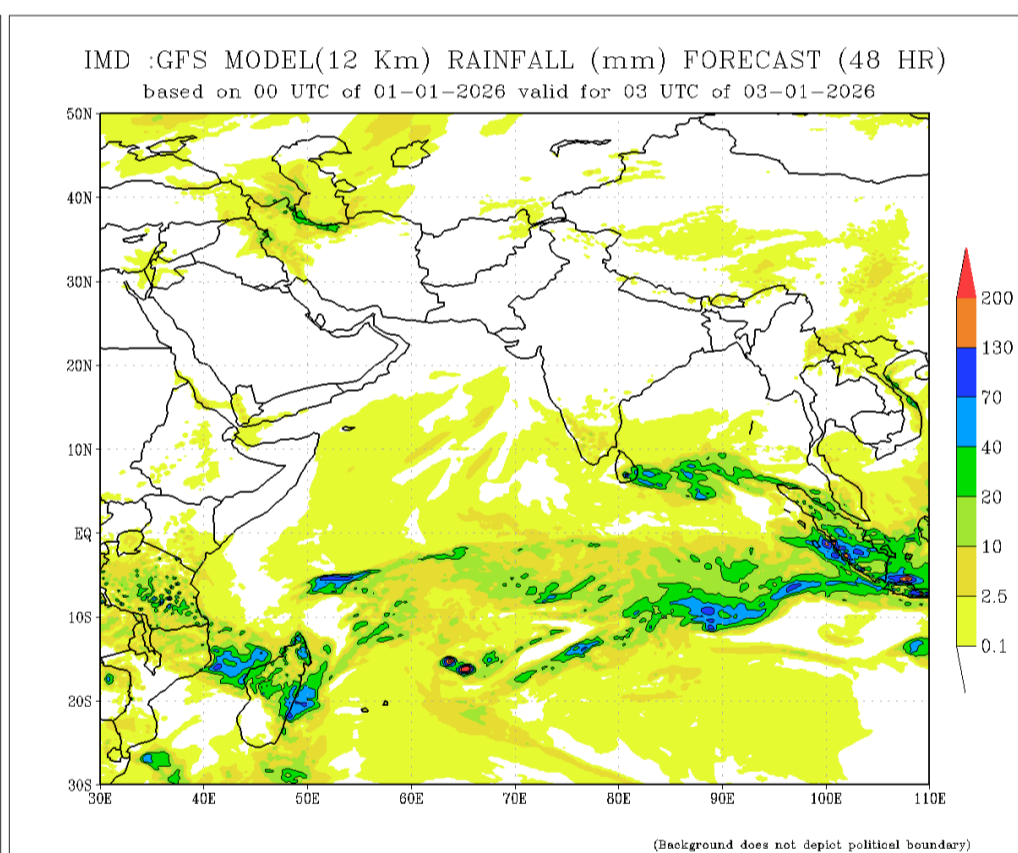
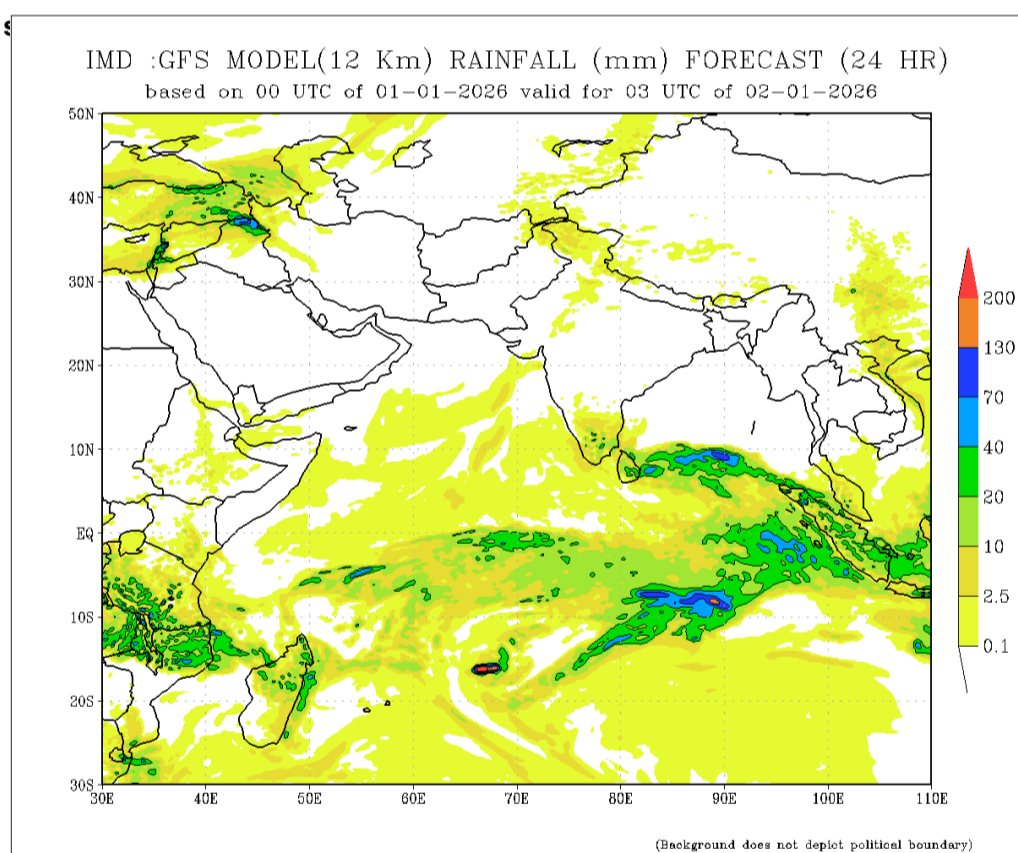


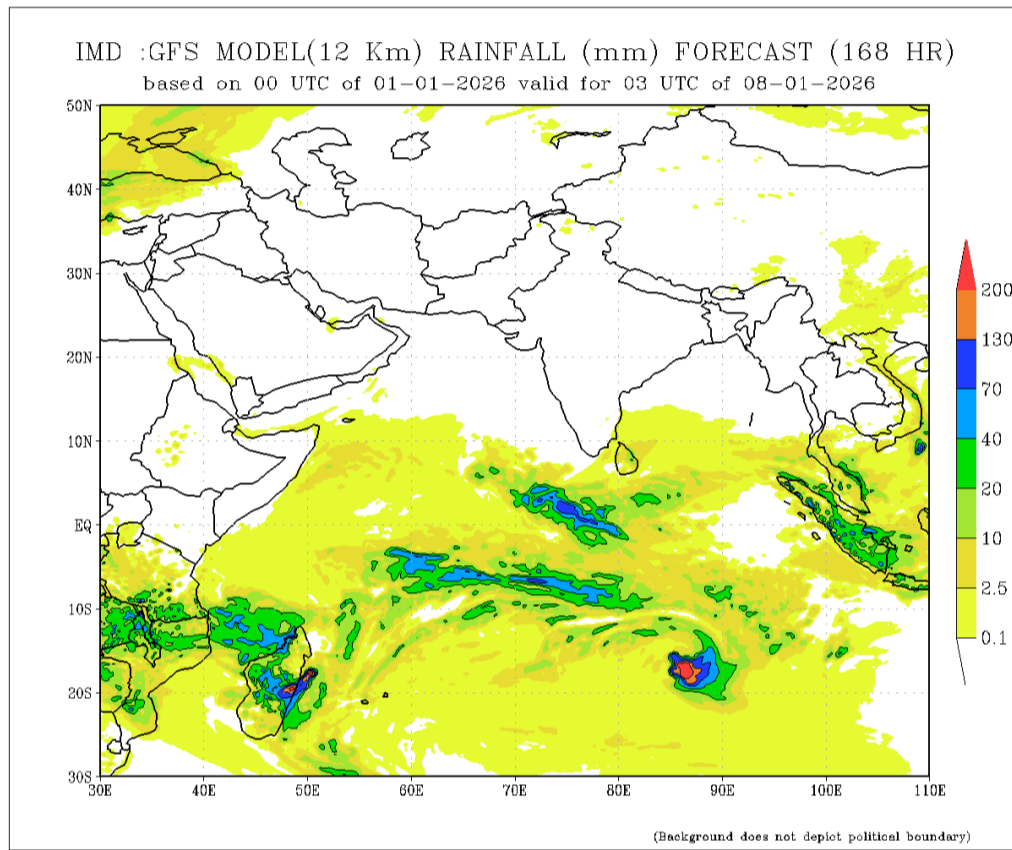
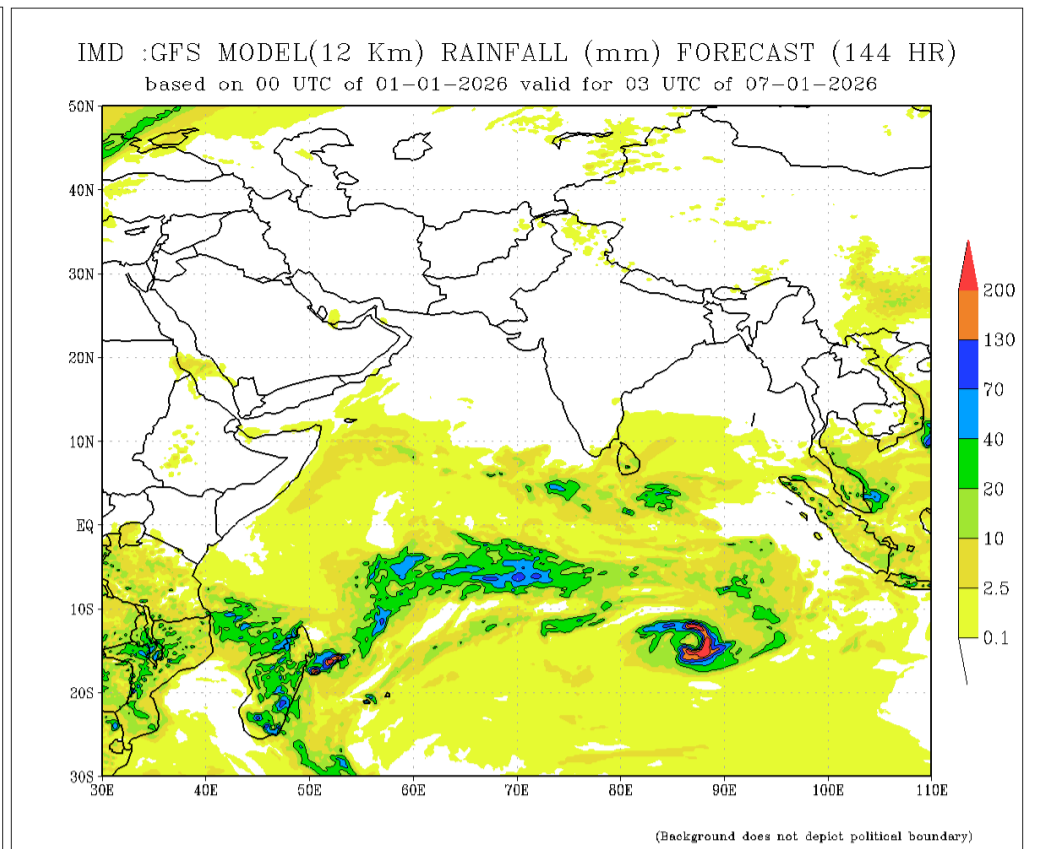
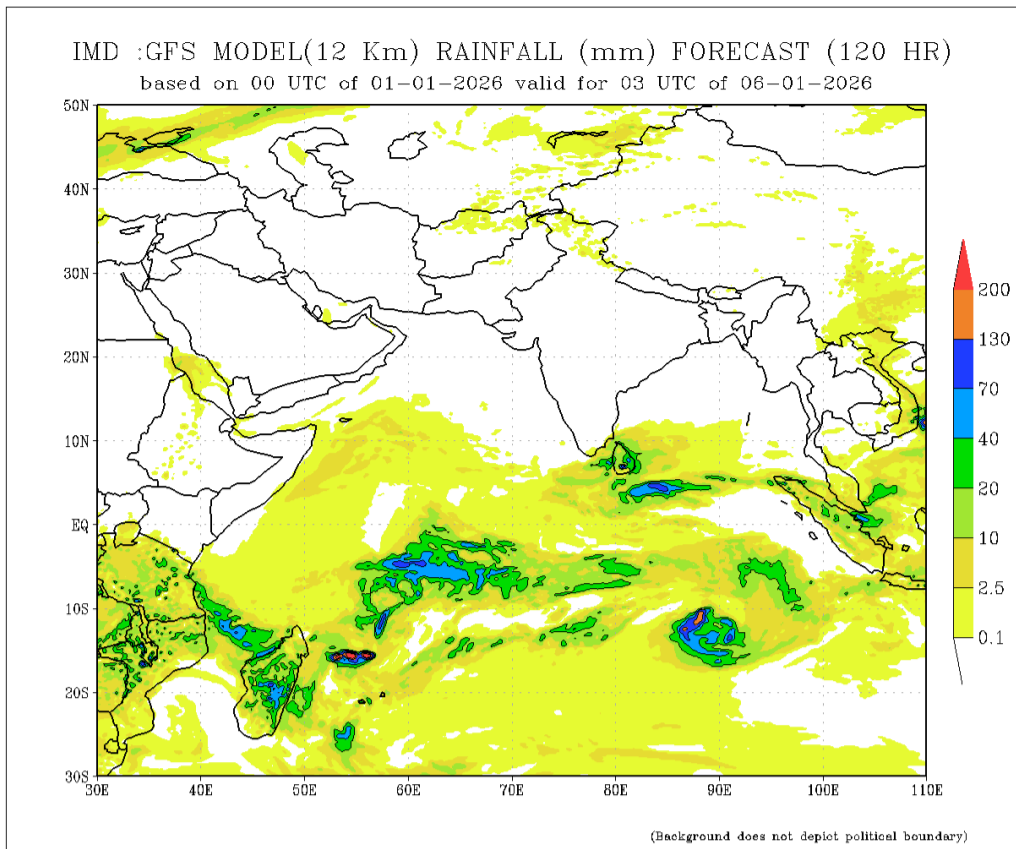
Dekadal (10 Day) Satellite Derived Rainfall Estimates



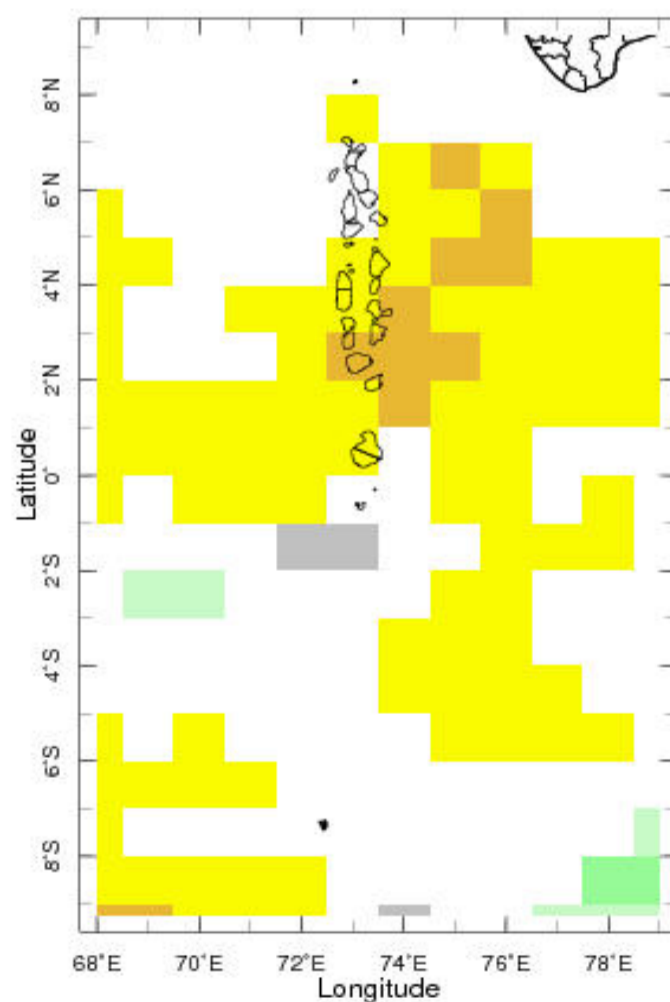
Daily Rainfall Forecast

Daily Rainfall forecasts (up to 7 days ahead) from the IMD is provided in figures below. These predictions are from the GFS (T1534) model covering the entire

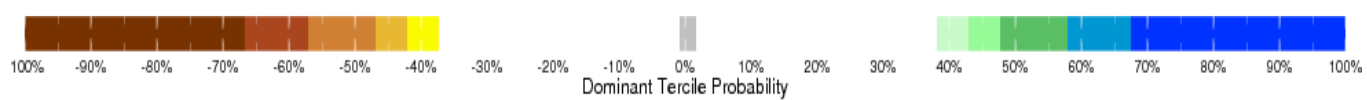




Weekly Precipitation Forecast



10-23 Jan 2026 IRI SubX Precipitation Forecast issued 00

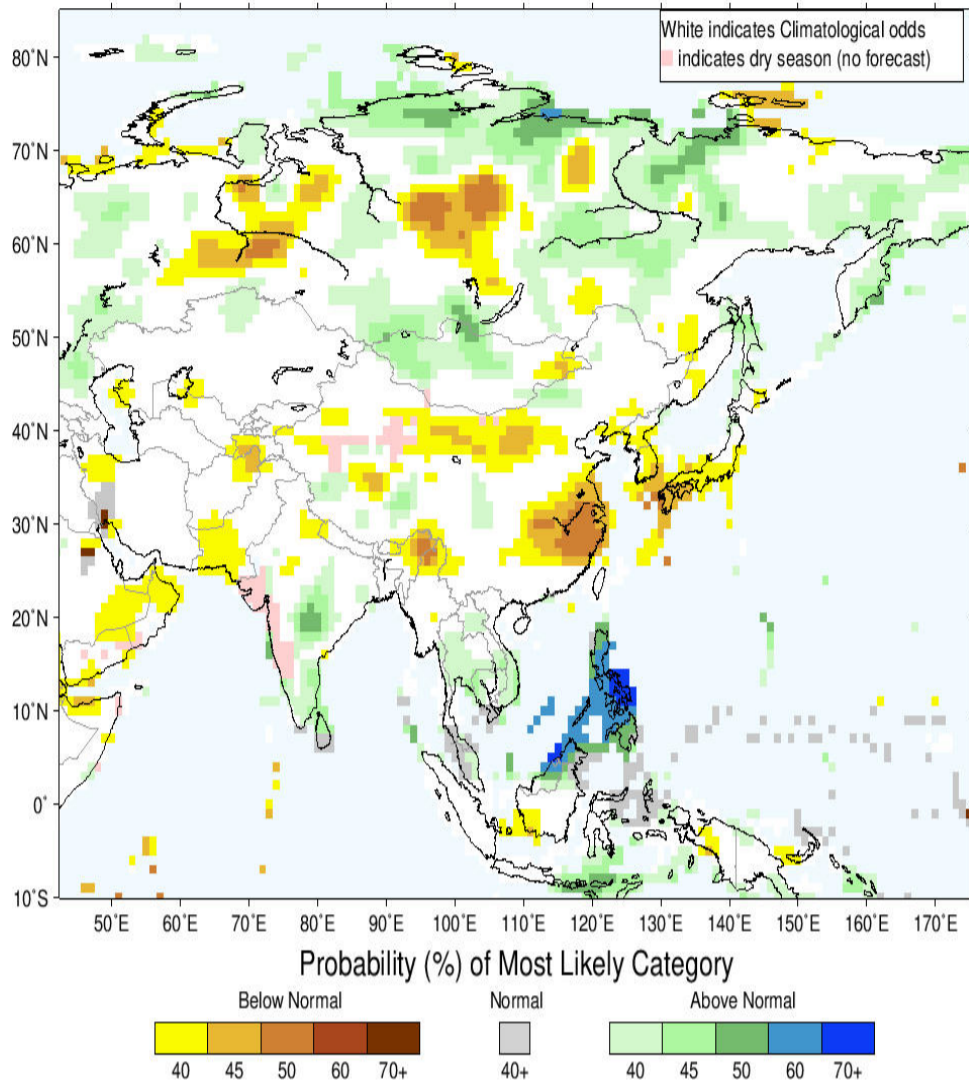


Seasonal Rainfall and Temperature Forecast

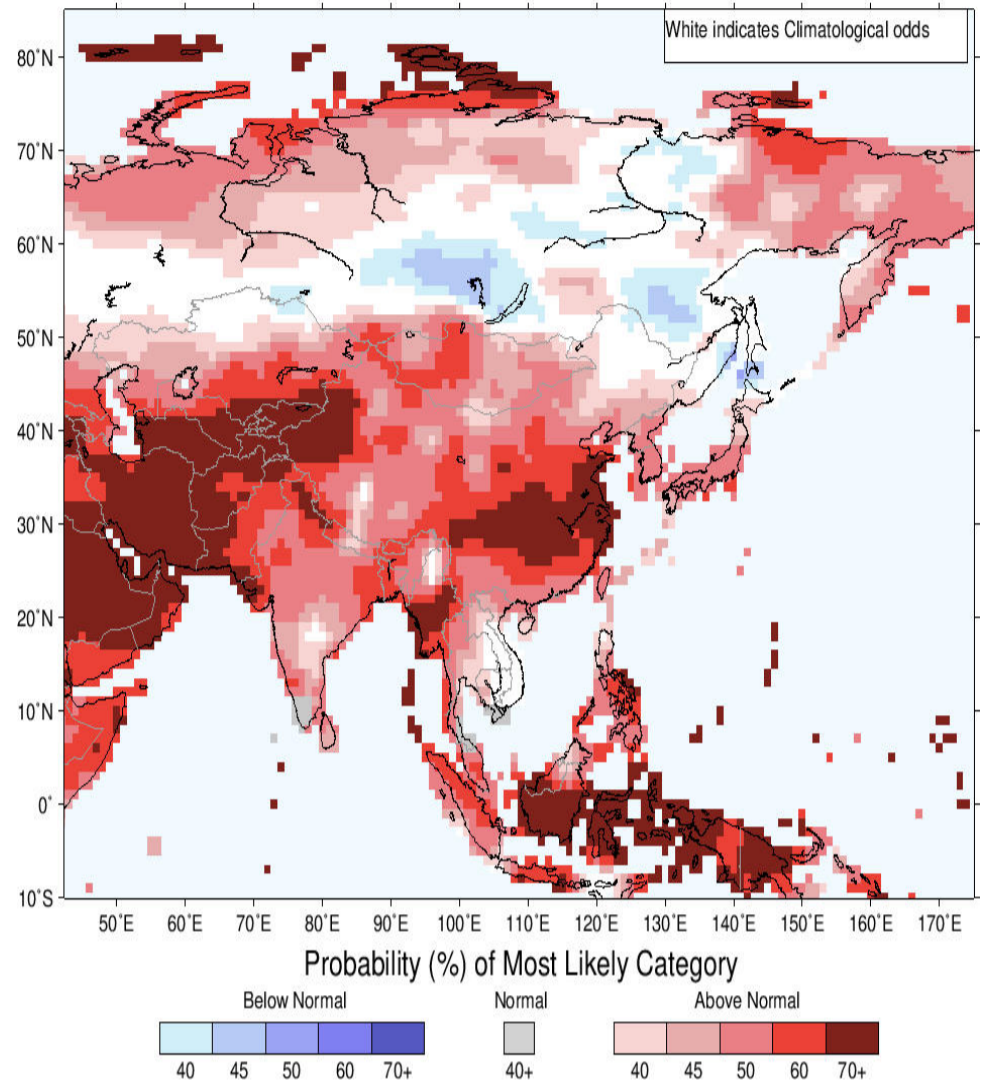
Following is the latest seasonal precipitation and temperature prediction for the next 3 months by the IRI. The color shading indicates the probability of the most dominant tercile -- that is, the tercile having the highest forecast probability. The color bar alongside the map defines these dominant tercile probability levels. The upper side of the color bar shows the colors used for increasingly strong probabilities when the dominant tercile is the above-normal tercile, while the lower side shows likewise for the below-normal tercile. The gray color indicates an enhanced probability for the near-normal tercile (nearly always limited to 40%).

IRI Multi-Model Probability Forecast for Precipitation for January-February-March 2026, Issued December 2025

IRI Multi-Model Probability Forecast for Temperature for January-February-March 2026, Issued December 2025



Precipitation Forecast



Temperature Forecast

Subscribe to our Monthly Maldives Newsletter

email address

Subscribe

Follow @fectmv

Contact Us

email: fectmv@gmail.com

phone: (+96) 07 788010

blog: www.lectmv.blogspot.com

Foundation for Environment, Climate & Technology,
 REM, Madhrasaadhoshuge,
 Henvairu, Hadheebee Magu,
 Male', 20184,
 Maldives