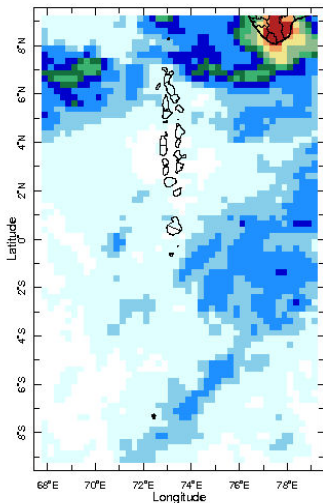


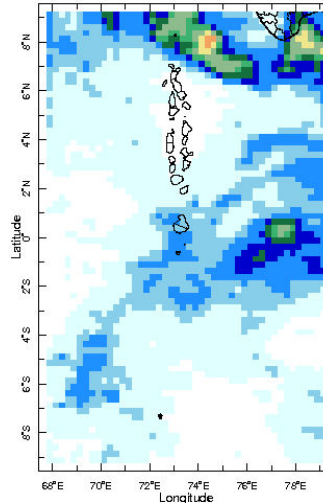


Daily Rainfall Monitoring

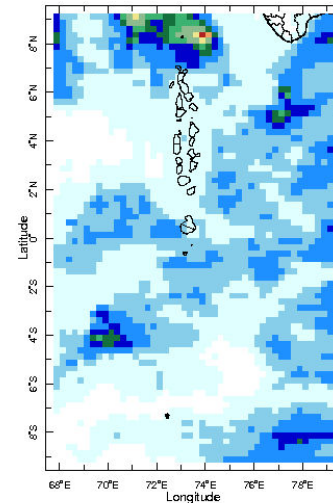
The following figures show the observed rainfall in the last 15 days in Maldives.



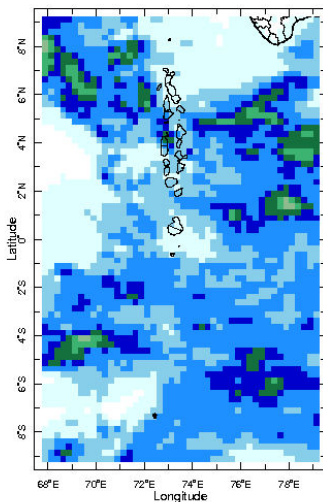
17 Dec 2023



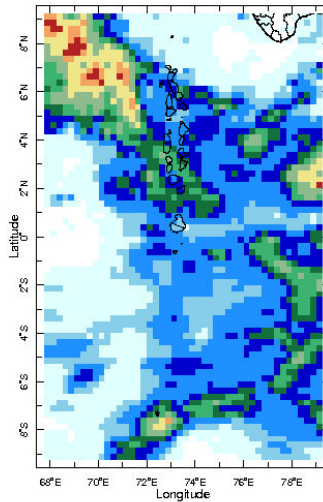
18 Dec 2023



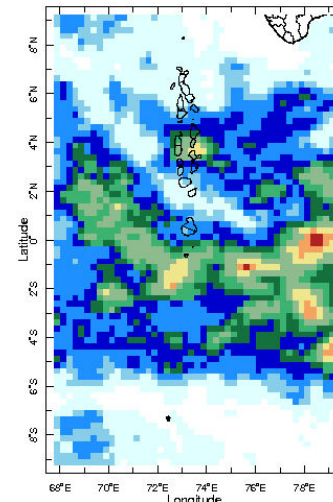
19 Dec 2023



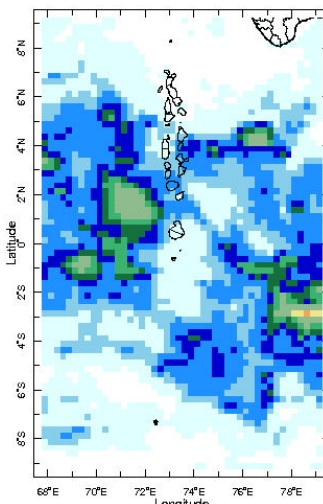
20 Dec 2023



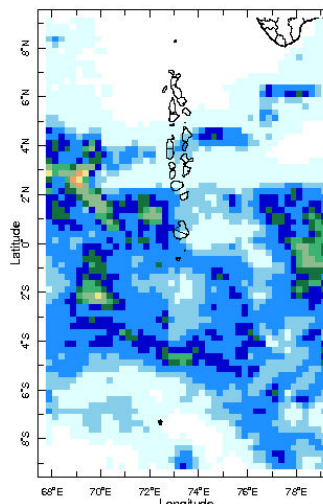
21 Dec 2023



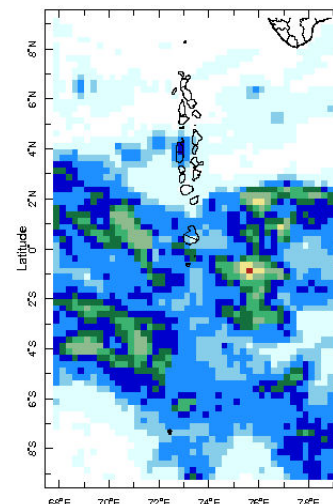
22 Dec 2023



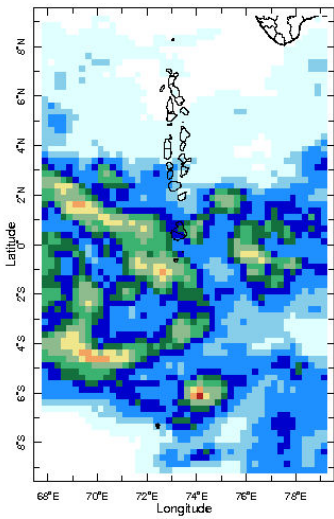
23 Dec 2023



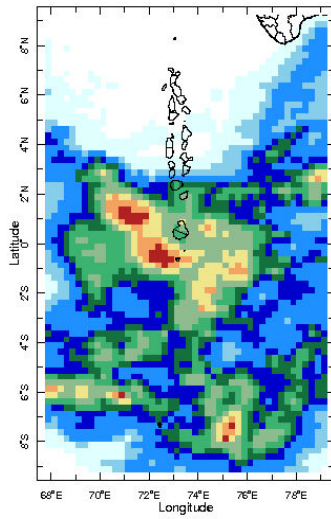
24 Dec 2023



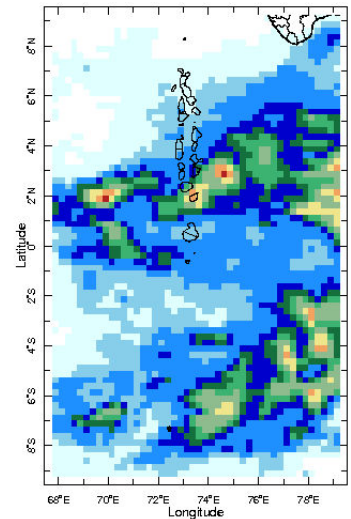
25 Dec 2023



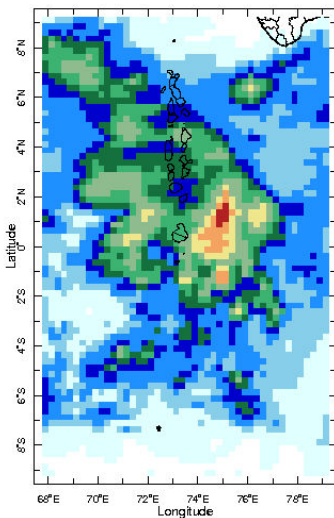
26 Dec 2023



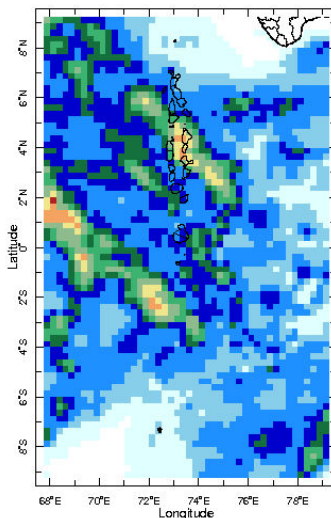
27 Dec 2023



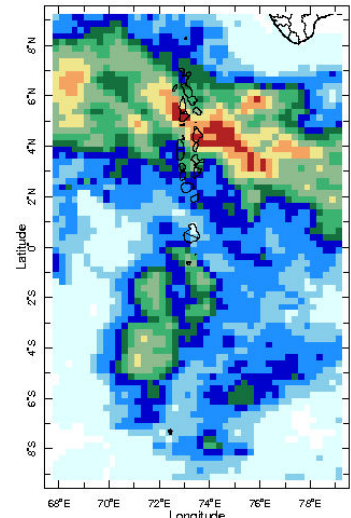
28 Dec 2023



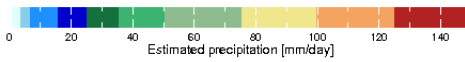
29 Dec 2023



30 Dec 2023

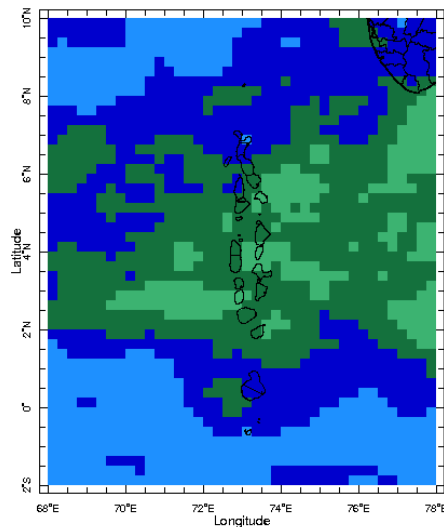


31 Dec 2023

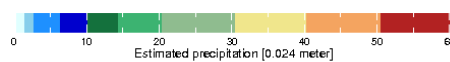


Monthly Rainfall Monitoring

The figure shows the average observed rainfall in the previous month.



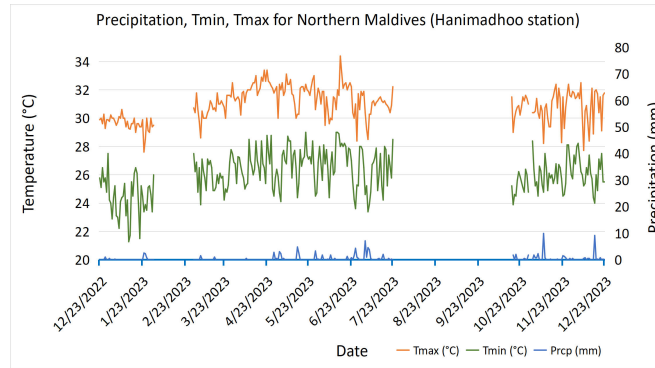
Nov 2023



Monthly Average

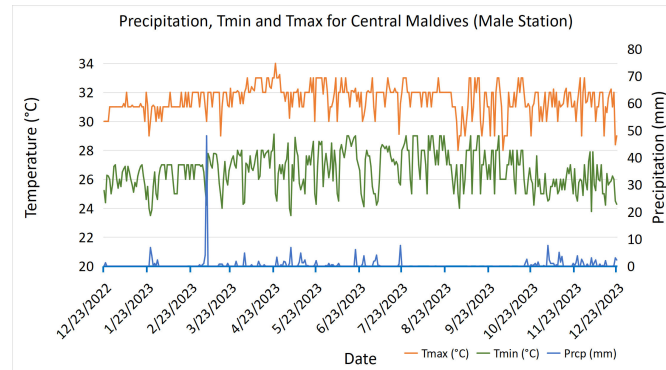
Monthly and Seasonal Monitoring

Northern Maldives:



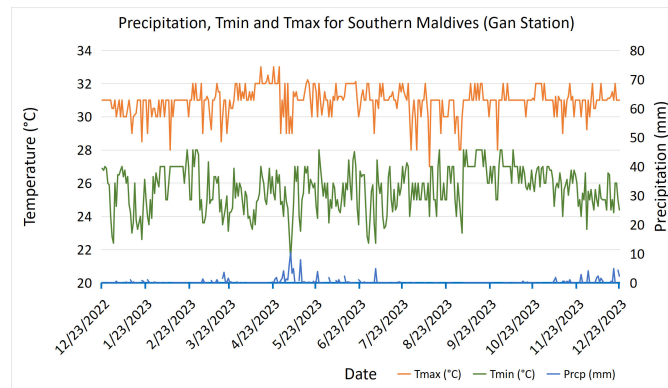
Daily Rainfall, Tmin & Tmax for the previous year in Hanimadhoo station (2022 December to 2023 December)

Central Maldives:



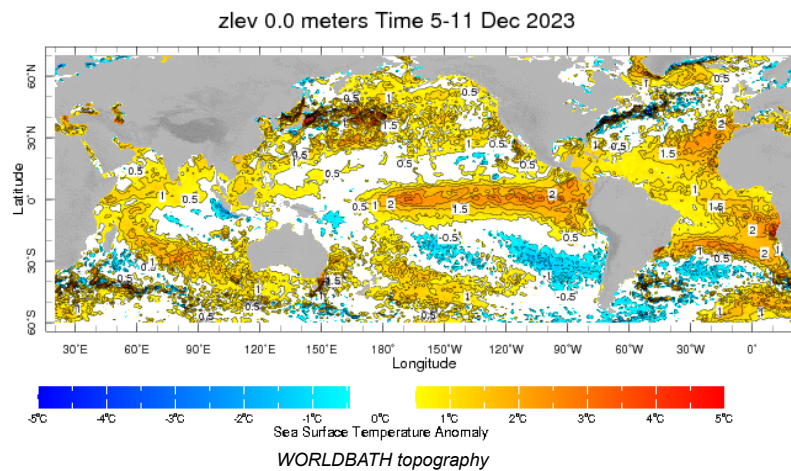
Daily Rainfall, Tmin & Tmax for the previous year in Male station (2022 December to 2023 December)

Southern Maldives:

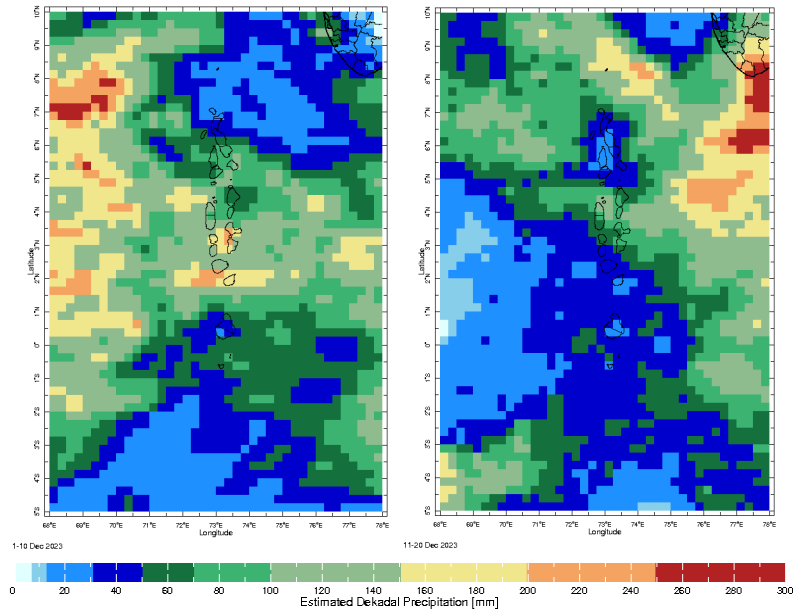


Daily Rainfall, Tmin & Tmax for the previous year in Gan station (2022 December to 2023 December)

Ocean Surface Monitoring

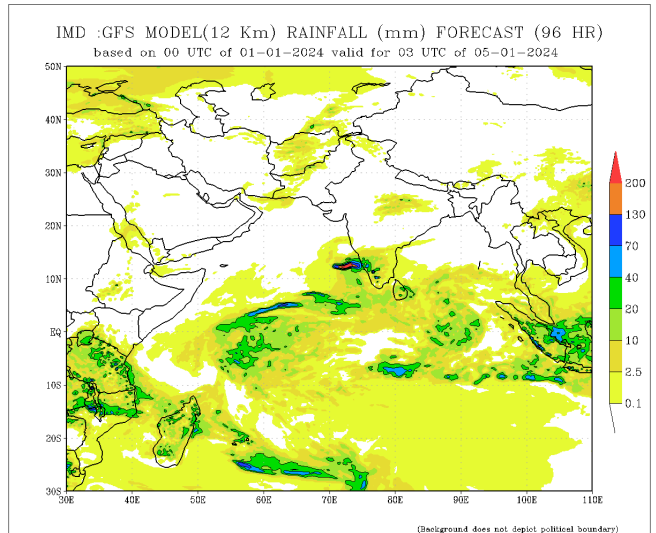
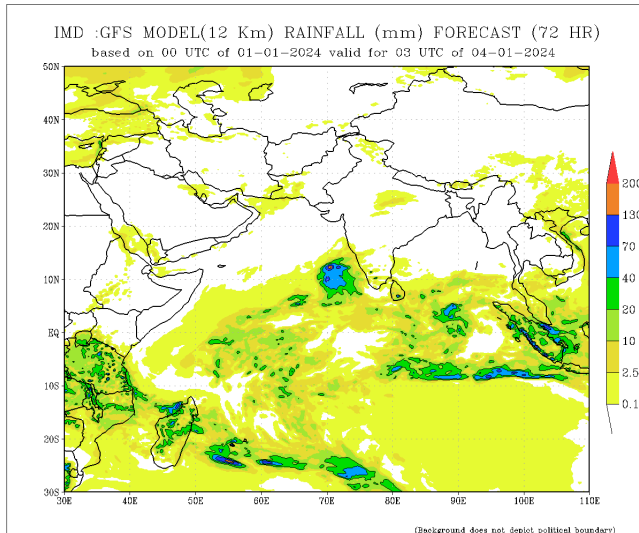
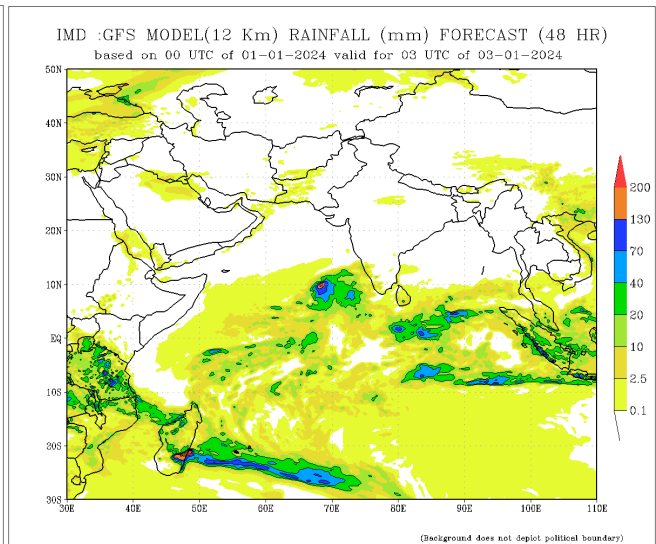
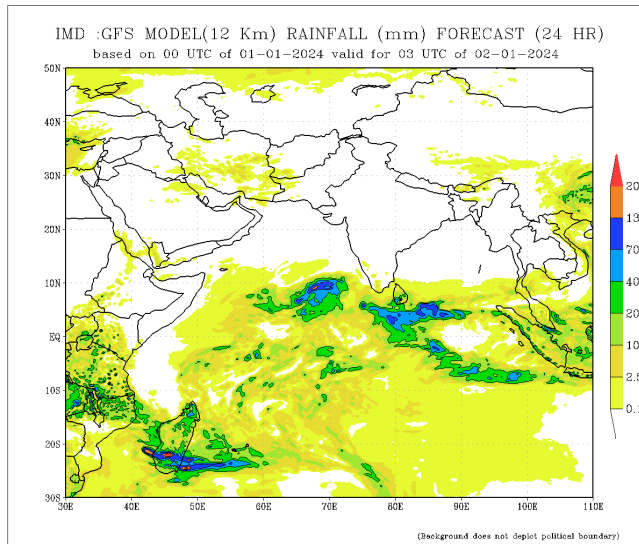


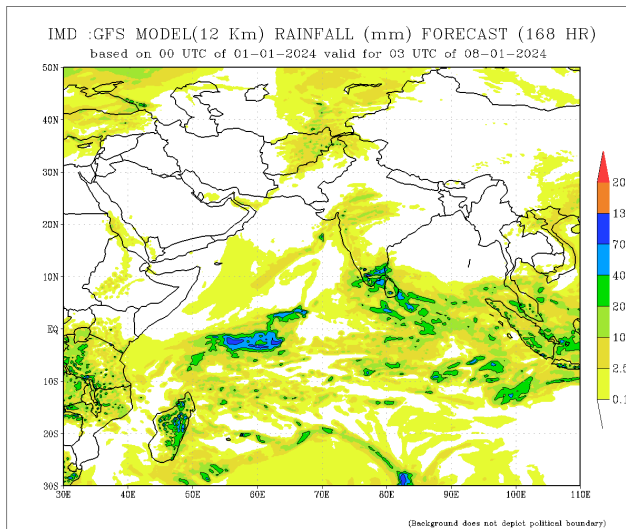
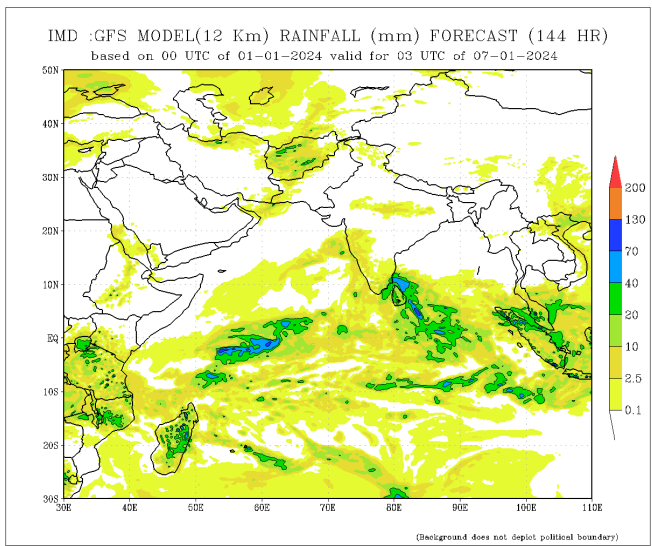
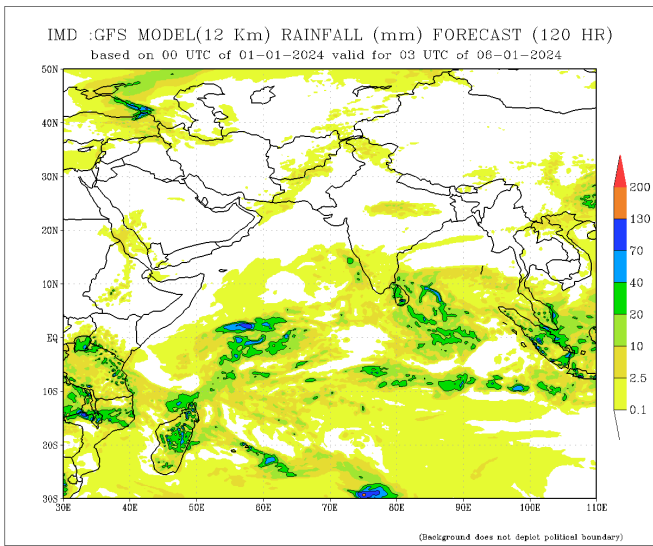
Dekadal (10 Day) Satellite Derived Rainfall Estimates



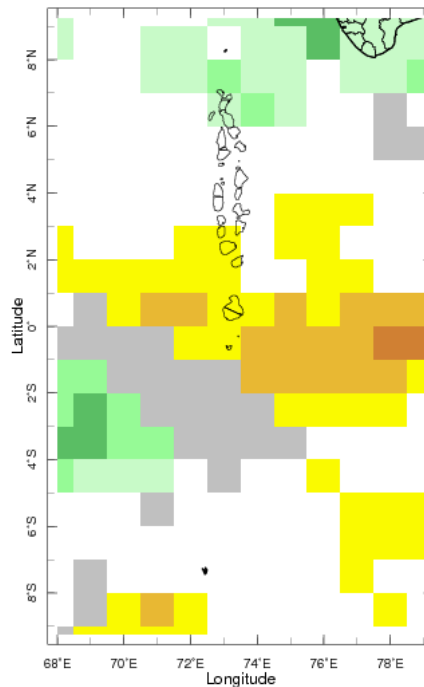
Daily Rainfall Forecast

Daily Rainfall forecasts (up to 7 days ahead) from the IMD is provided in figures below. These predictions are from the GFS (T1534) model covering the entire south Asian region.

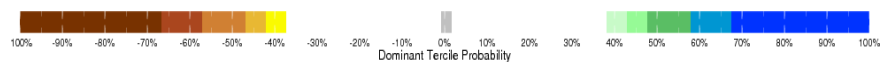




Bi-weekly Precipitation Forecast



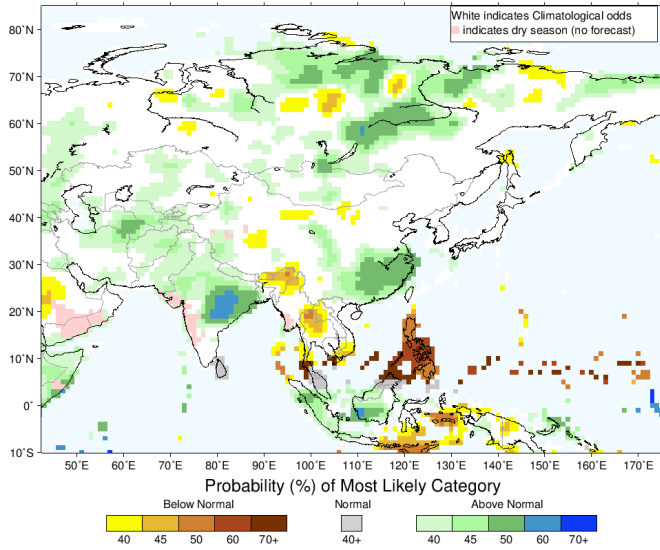
6-19 Jan 2024 IRI SubX Precipitation Forecast issued 0000 29 D



Seasonal Rainfall and Temperature Forecast

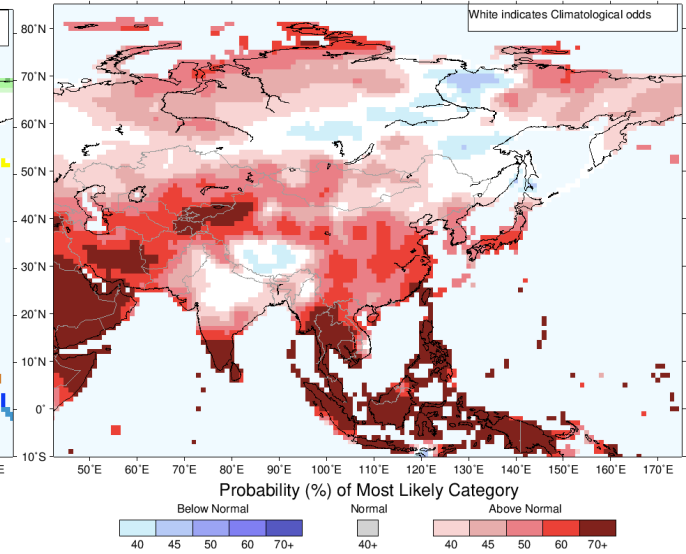
Following is the latest seasonal precipitation and temperature prediction for the next 3 months by the IRI. The color shading indicates the probability of the most dominant tercile -- that is, the tercile having the highest forecast probability. The color bar alongside the map defines these dominant tercile probability levels. The upper side of the color bar shows the colors used for increasingly strong probabilities when the dominant tercile is the above-normal tercile, while the lower side shows likewise for the below-normal tercile. The gray color indicates an enhanced probability for the near-normal tercile (nearly always limited to 40%).

IRI Multi-Model Probability Forecast for Precipitation for January-February-March 2024, Issued December 2023



Precipitation Forecast

IRI Multi-Model Probability Forecast for Temperature for January-February-March 2024, Issued December 2023



Temperature Forecast

Subscribe to our Monthly Maldives Newsletter

email address

Subscribe

Follow @fectmv

Contact Us

email: fectmv@gmail.com

phone: (+96) 07 788010

blog: www.lectmv.blogspot.com

Foundation for Environment, Climate & Technology,
REM, Madhrasaadhoshuge,
Henveiru, Hadheebee Magu,
Male', 20184,
Maldives