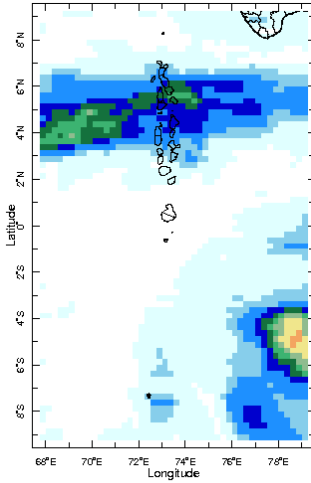


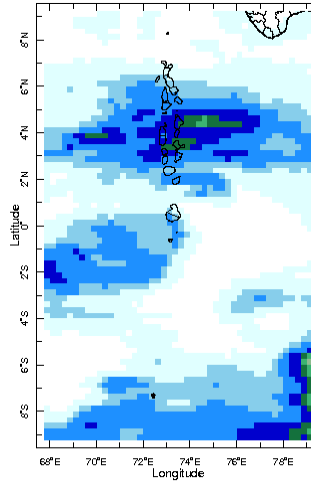


Daily Rainfall Monitoring

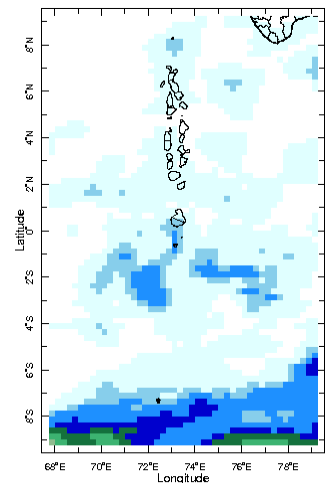
The following figures show the observed rainfall in the last 15 days in Maldives.



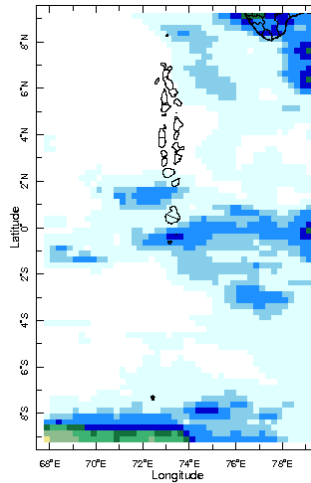
17 Oct 2021



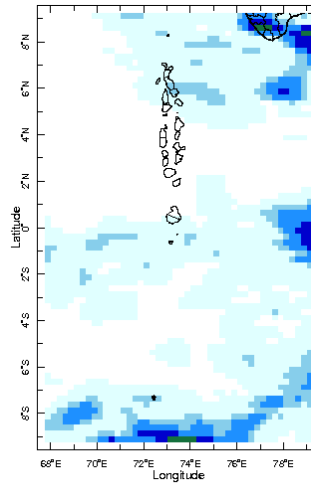
18 Oct 2021



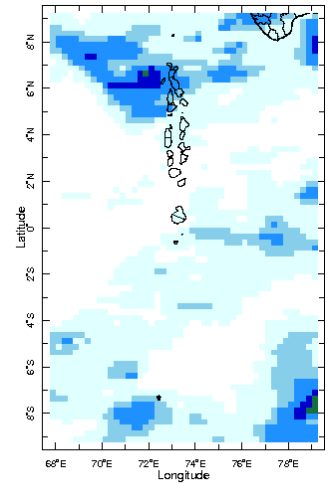
19 Oct 2021



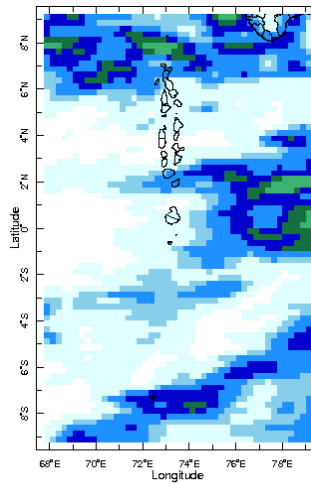
20 Oct 2021



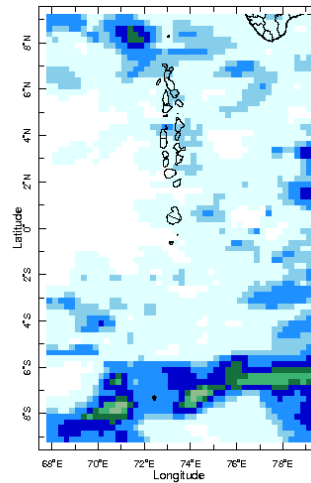
21 Oct 2021



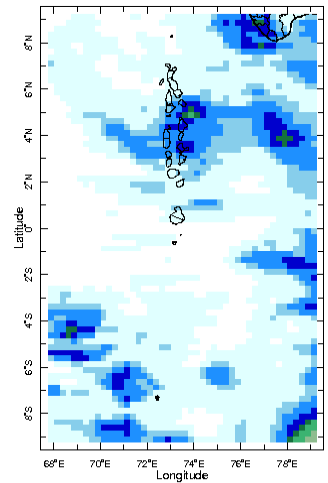
22 Oct 2021



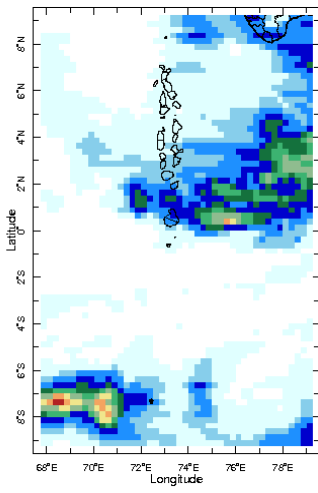
23 Oct 2021



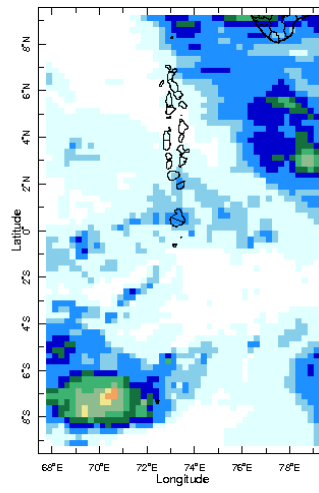
24 Oct 2021



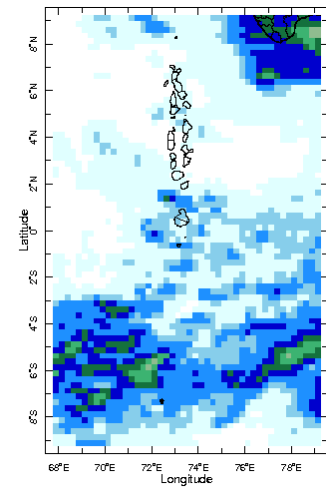
25 Oct 2021



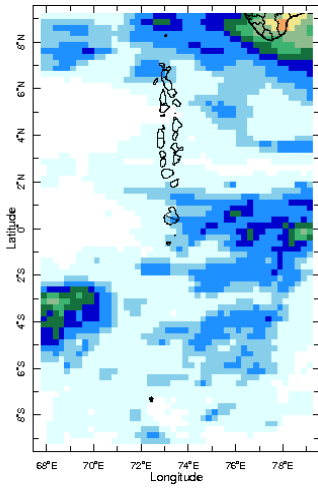
26 Oct 2021



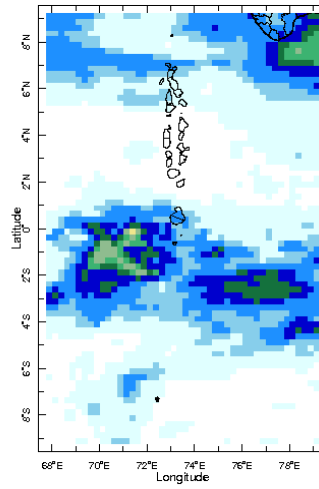
27 Oct 2021



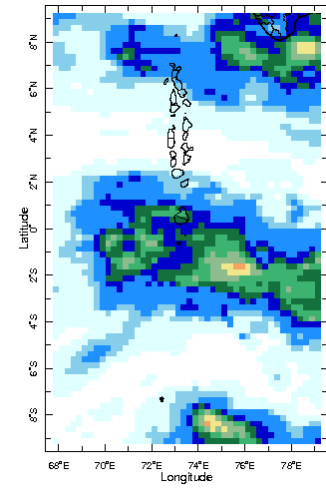
28 Oct 2021



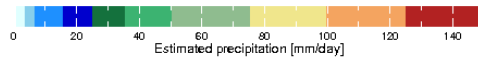
29 Oct 2021



30 Oct 2021

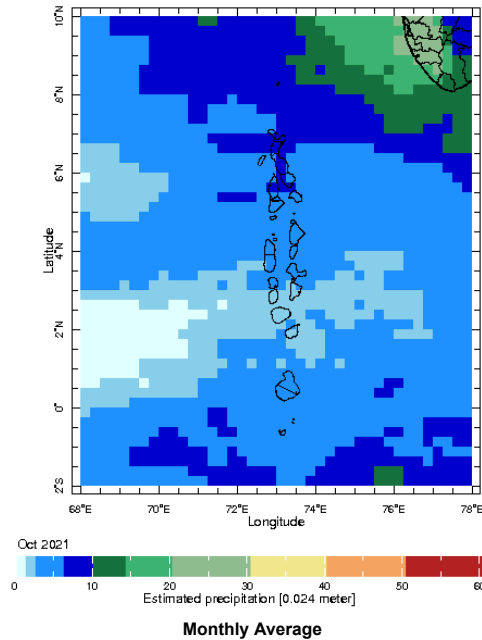


31 Oct 2021



Monthly Rainfall Monitoring

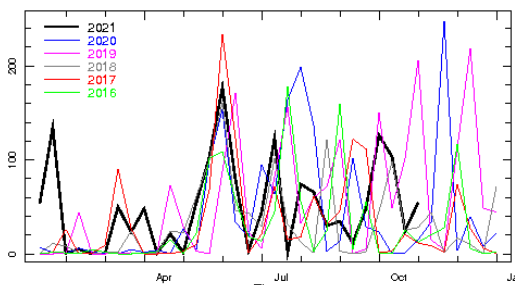
The figure shows the average observed rainfall in the previous month.



Monthly Average

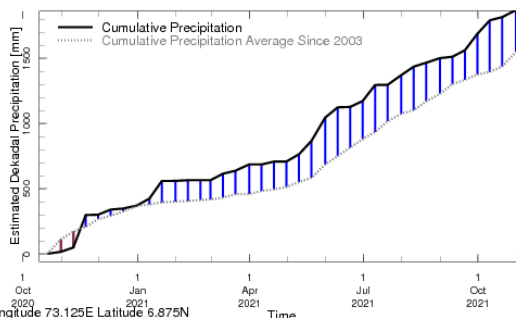
Monthly and Seasonal Monitoring

Northern Maldives:



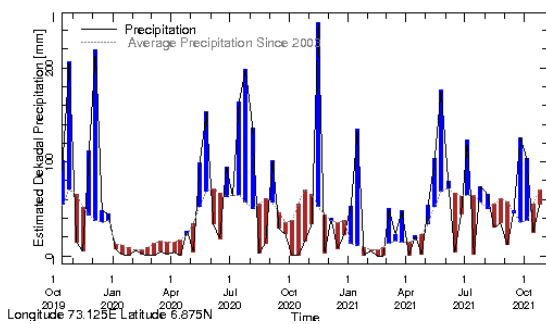
Longitude 73.125E Latitude 6.875N

Rainfall in the current year (black) compared to rainfall in previous 5 years



Longitude 73.125E Latitude 6.875N

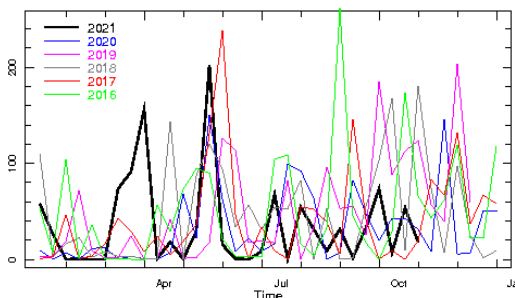
Rainfall of past 365 days (black) compared to average rainfall since 2003.



Longitude 73.125E Latitude 6.875N

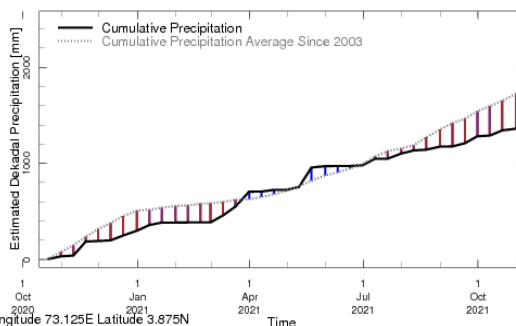
Rainfall in the past 5 years with above-average rainfall hatched in blue and below-average hatched in brown

Central Maldives:



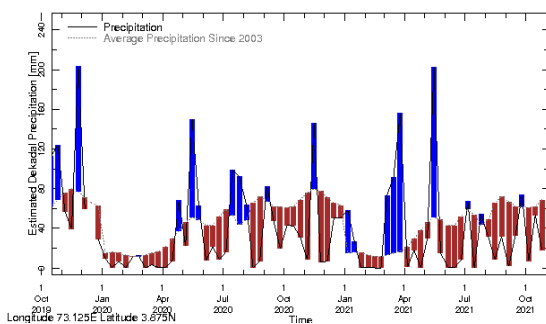
Longitude 73.125E Latitude 3.875N

Rainfall in the current year (black) compared to rainfall in previous 5 years



Longitude 73.125E Latitude 3.875N

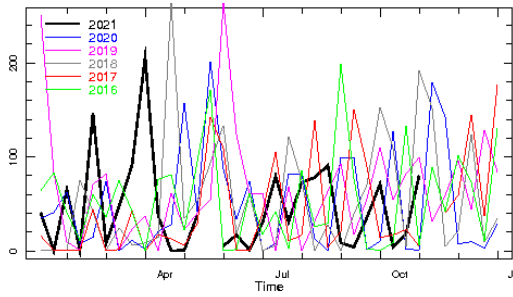
Rainfall of past 365 days (black) compared to average rainfall since 2003.



Longitude 73.125E Latitude 3.875N

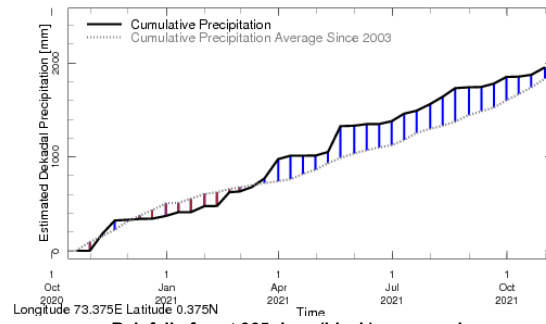
Rainfall in the past 5 years with above-average rainfall hatched in blue and below-average hatched in brown

Southern Maldives:



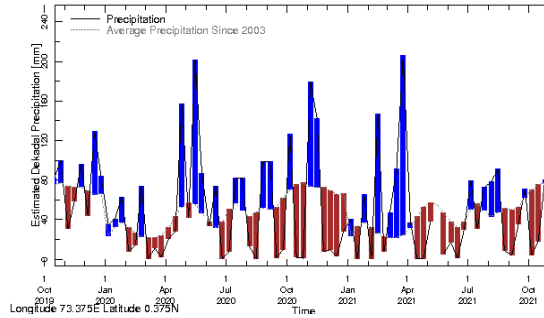
Longitude 73.375E Latitude 0.375N

Rainfall in the current year (black) compared to rainfall in previous 5 years



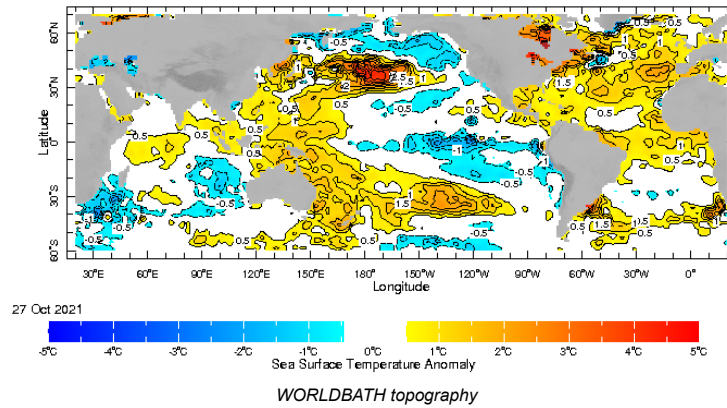
Longitude 73.375E Latitude 0.375N

Rainfall of past 365 days (black) compared to average rainfall since 2003.

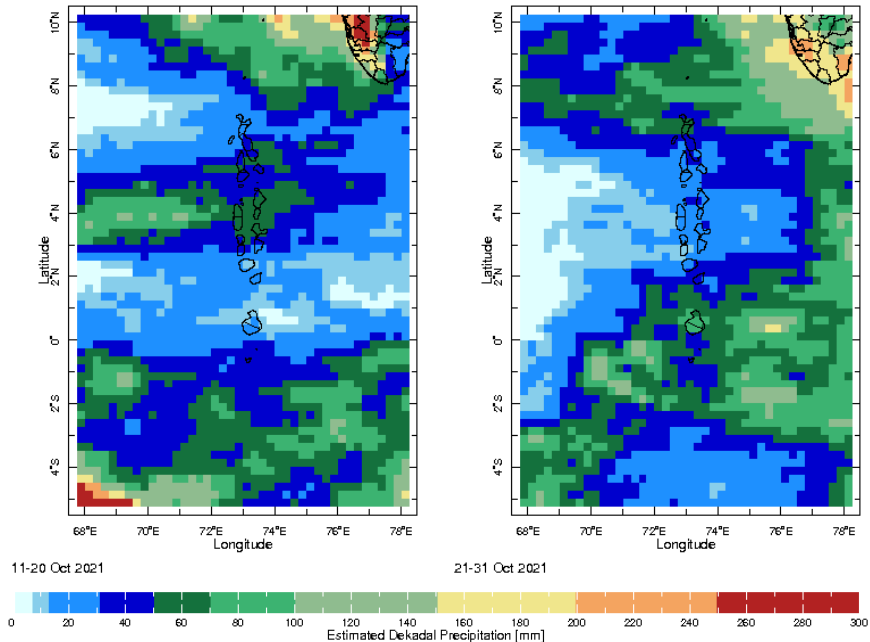


Rainfall in the past 5 years with above-average rainfall hatched in blue and below-average hatched in brown

Ocean Surface Monitoring

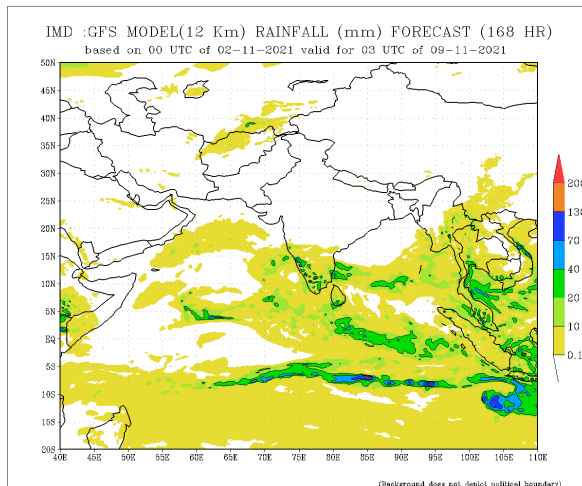
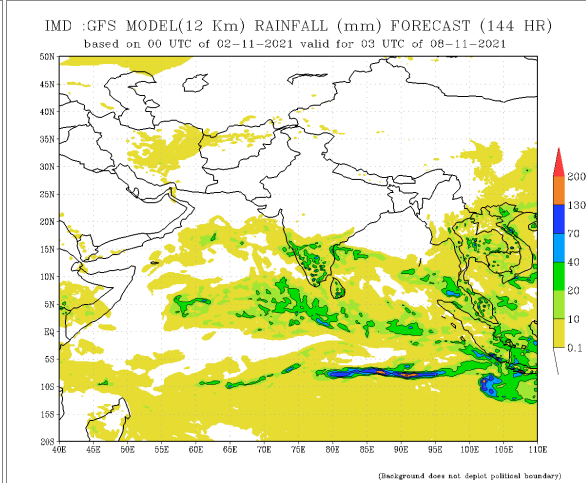
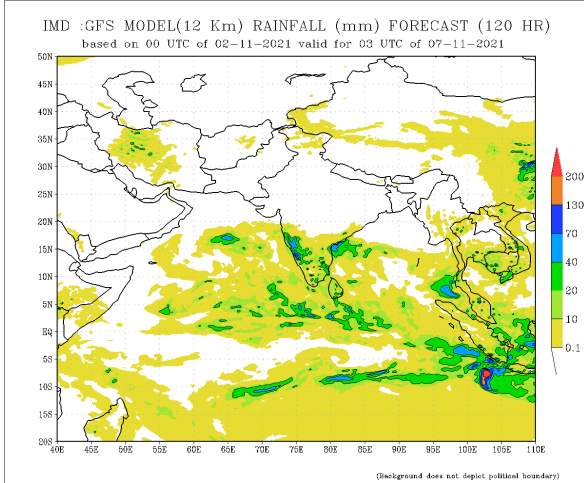
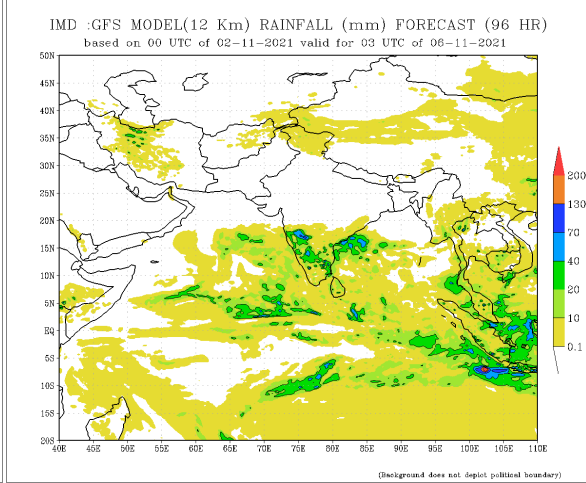
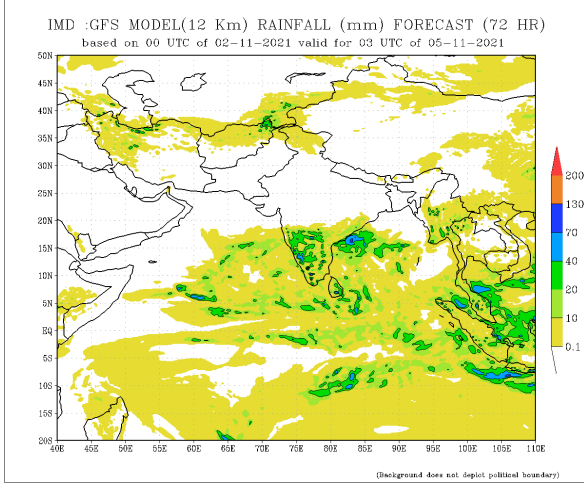
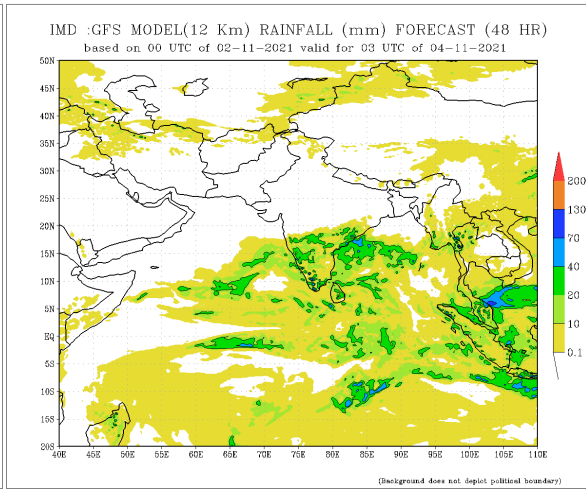
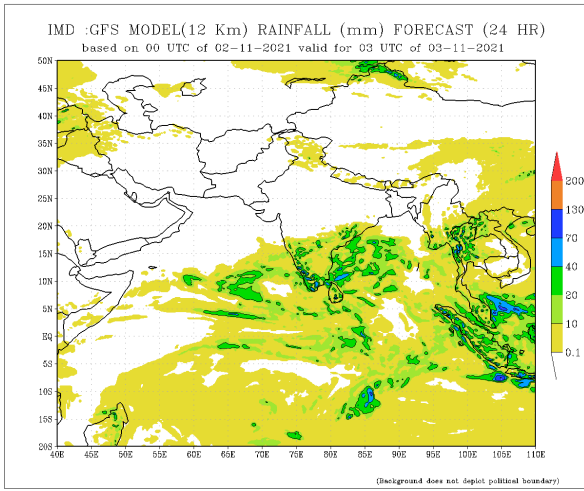


Dekadal (10 Day) Satellite Derived Rainfall Estimates

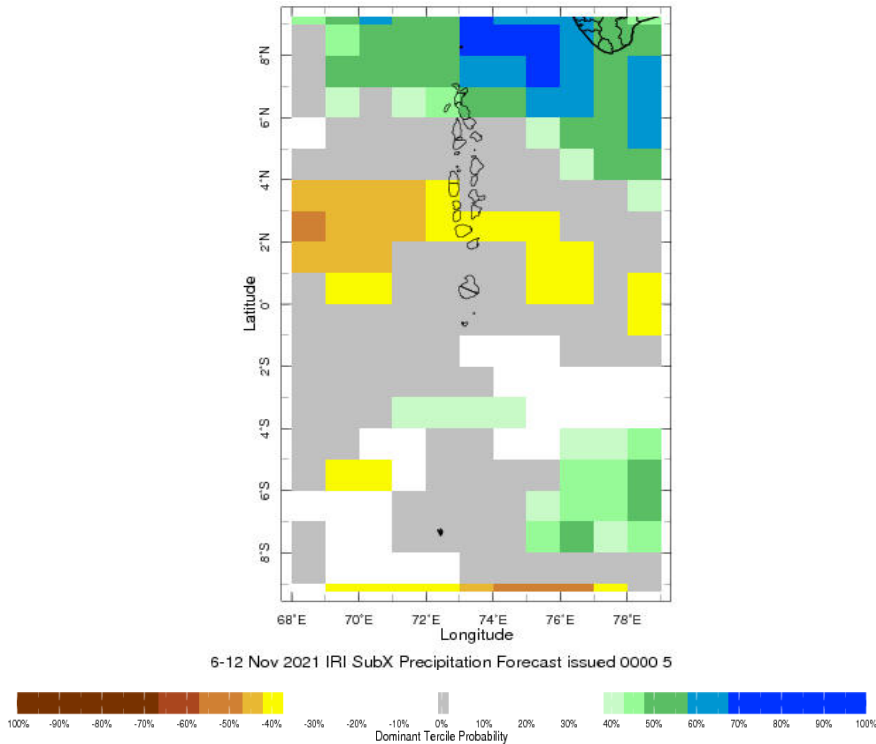


Daily Rainfall Forecast

Daily Rainfall forecasts (up to 7 days ahead) from the IMD is provided in figures below. These predictions are from the GFS (T1534) model covering the entire south Asian region.



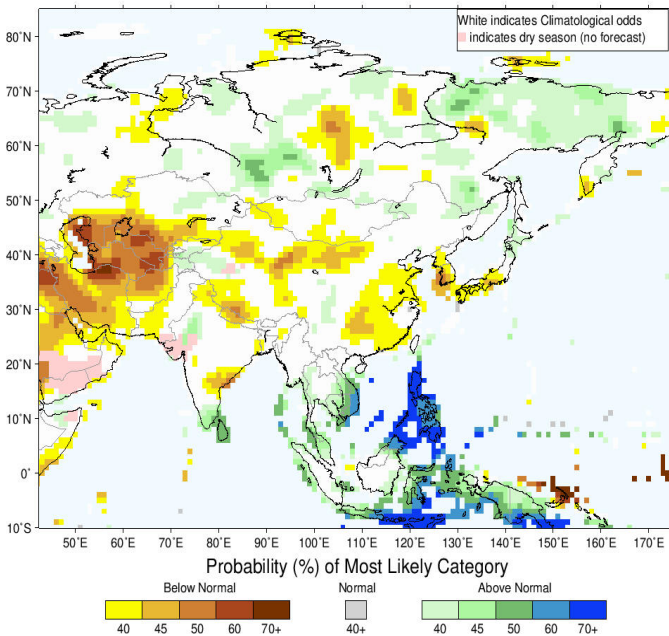
Weekly Precipitation Forecast



Seasonal Rainfall and Temperature Forecast

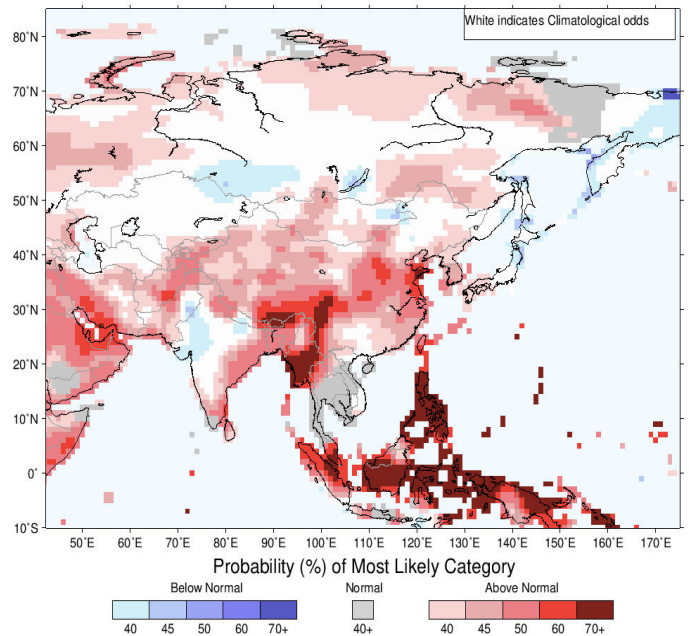
Following is the latest seasonal precipitation and temperature prediction for the next 3 months by the IRI. The color shading indicates the probability of the most dominant tercile -- that is, the tercile having the highest forecast probability. The color bar alongside the map defines these dominant tercile probability levels. The upper side of the color bar shows the colors used for increasingly strong probabilities when the dominant tercile is the above-normal tercile, while the lower side shows likewise for the below-normal tercile. The gray color indicates an enhanced probability for the near-normal tercile (nearly always limited to 40%).

IRI Multi-Model Probability Forecast for Precipitation for November-December-January 2022, Issued October 2021



Precipitation Forecast

IRI Multi-Model Probability Forecast for Temperature for November-December-January 2022, Issued October 2021



Temperature Forecast

Subscribe to our Monthly Maldives Newsletter

email address

Subscribe

Follow @fectmv

Contact Us
email: fectmv@gmail.com
phone: (+96) 07 788010
blog: www.fectmv.blogspot.com

Foundation for Environment, Climate & Technology,
REM, Madhrasaadhoshuge,
Henneiru, Hadheebee Magu,
Male', 20184,
Maldives