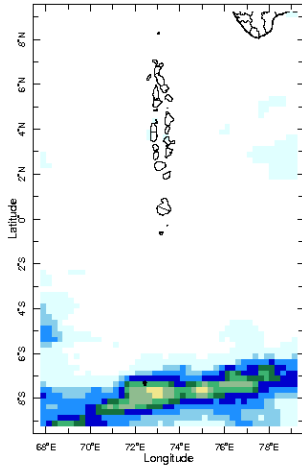


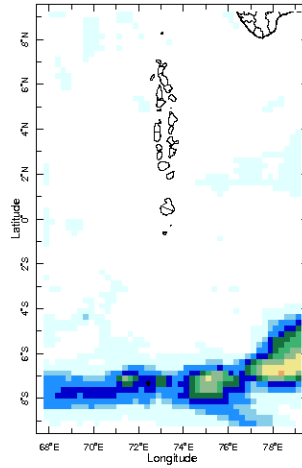


Daily Rainfall Monitoring

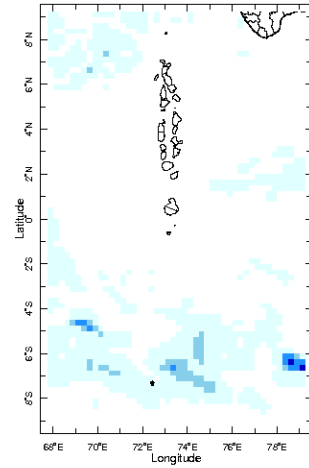
The following figures show the observed rainfall in the last 15 days in Maldives.



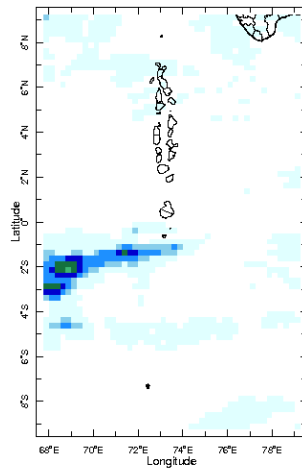
15 Sep 2022



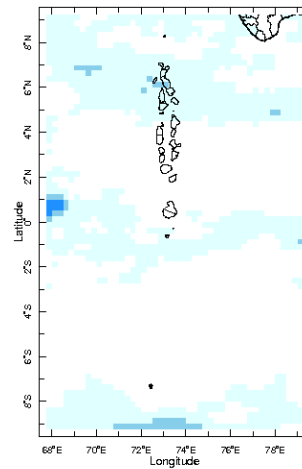
16 Sep 2022



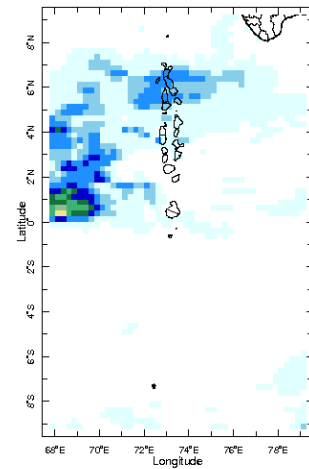
17 Sep 2022



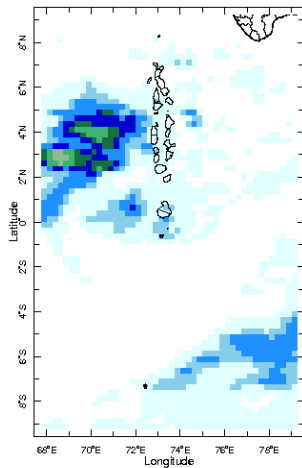
18 Sep 2022



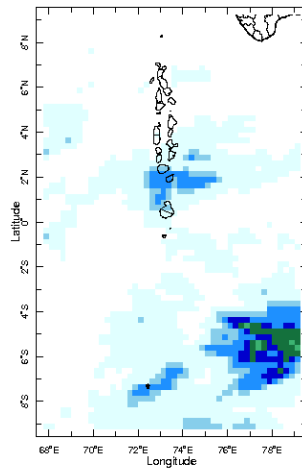
19 Sep 2022



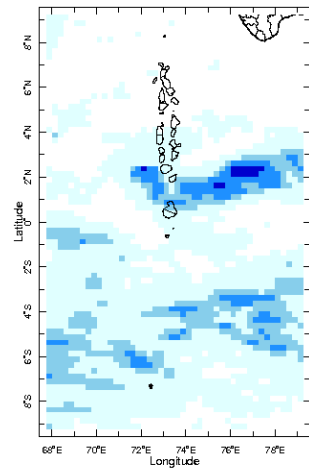
20 Sep 2022



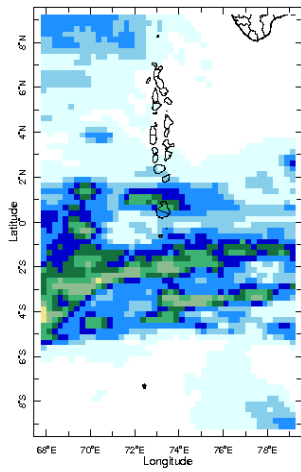
21 Sep 2022



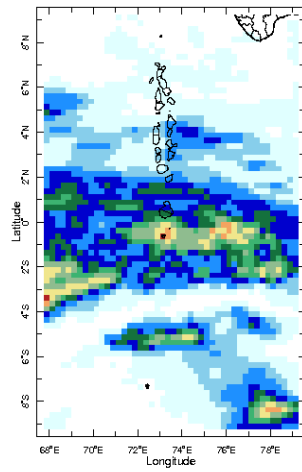
22 Sep 2022



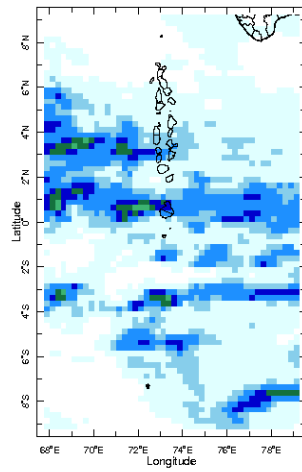
23 Sep 2022



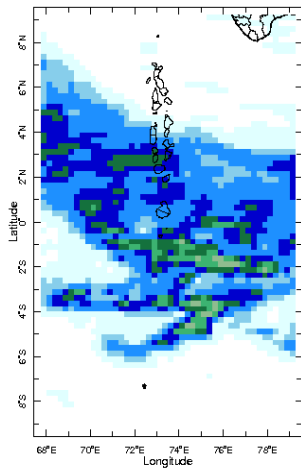
.24 Sep 2022



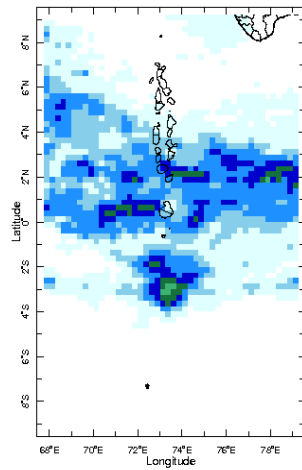
.25 Sep 2022



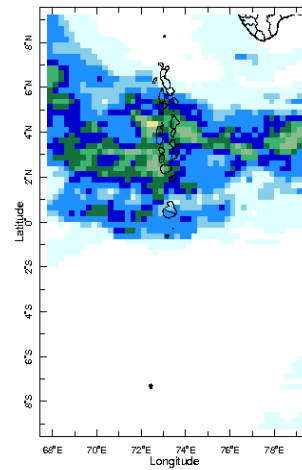
26 Sep 2022



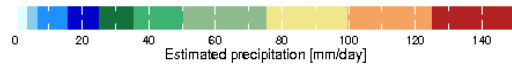
.27 Sep 2022



.28 Sep 2022

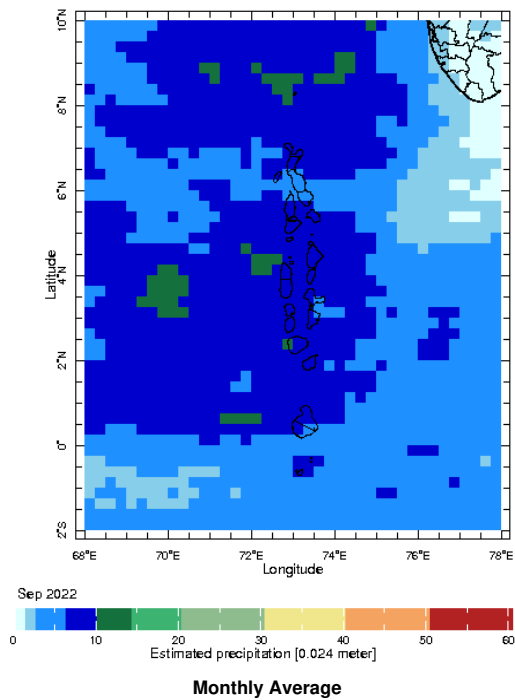


.29 Sep 2022



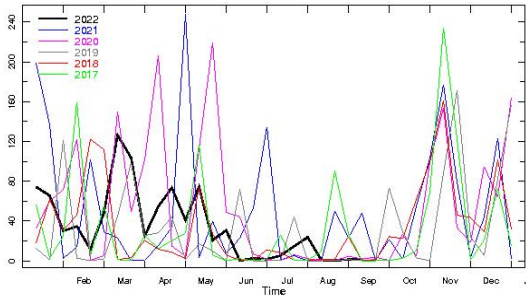
Monthly Rainfall Monitoring

The figure shows the average observed rainfall in the previous month.



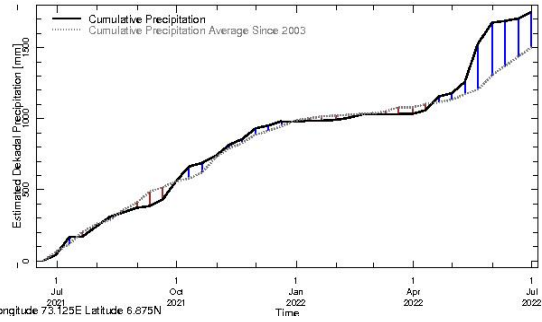
Monthly and Seasonal Monitoring

Northern Maldives:

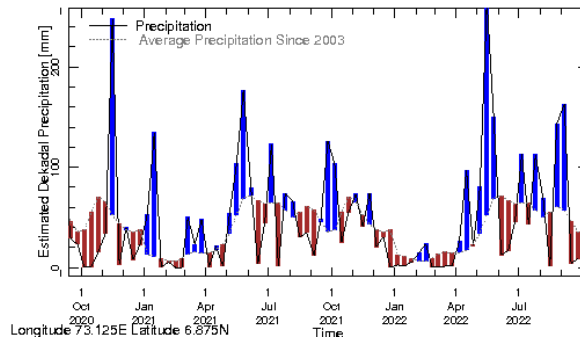


Longitude 73.125E Latitude 6.875N

Rainfall in the current year (black) compared to rainfall in previous 5 years

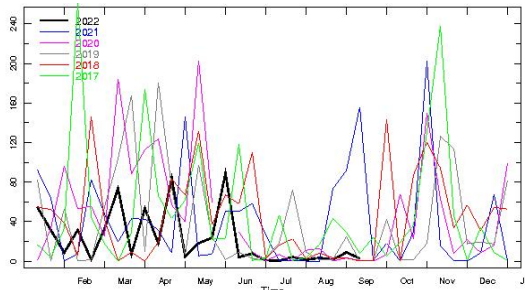


Rainfall of past 365 days (black) compared to average rainfall since 2003.



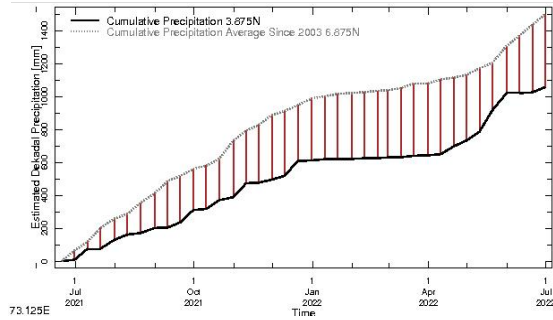
Rainfall in the past 5 years with above-average rainfall hatched in blue and below-average hatched in brown

Central Maldives:

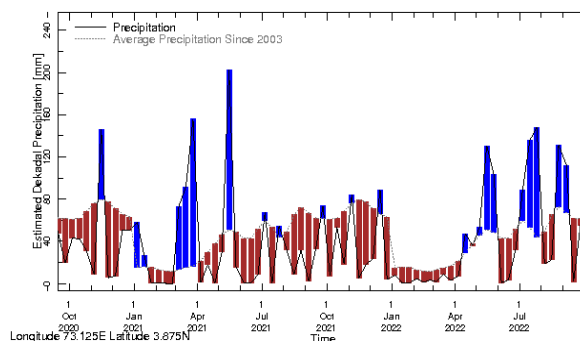


Longitude 73.125E Latitude 3.875N

Rainfall in the current year (black) compared to rainfall in previous 5 years

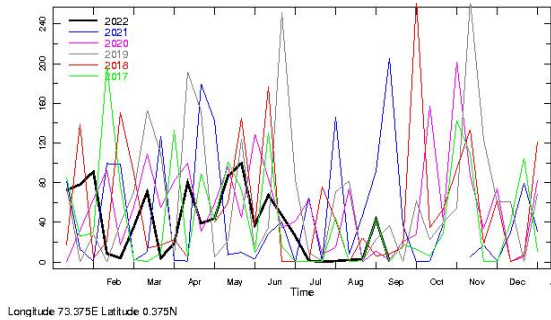


Rainfall of past 365 days (black) compared to average rainfall since 2003.

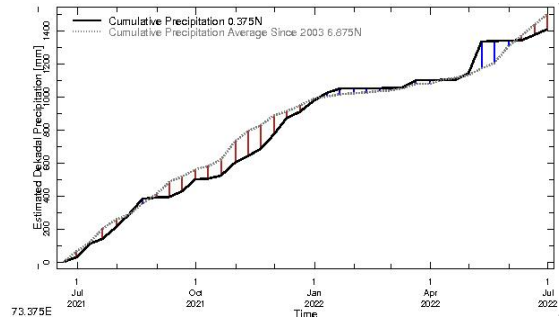


Rainfall in the past 5 years with above-average rainfall hatched in blue and below-average hatched in brown

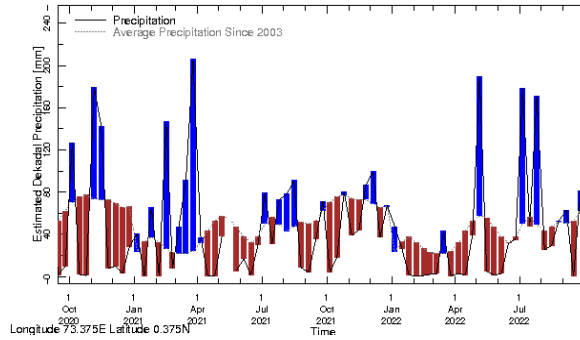
Southern Maldives:



Rainfall in the current year (black) compared to rainfall in previous 5 years

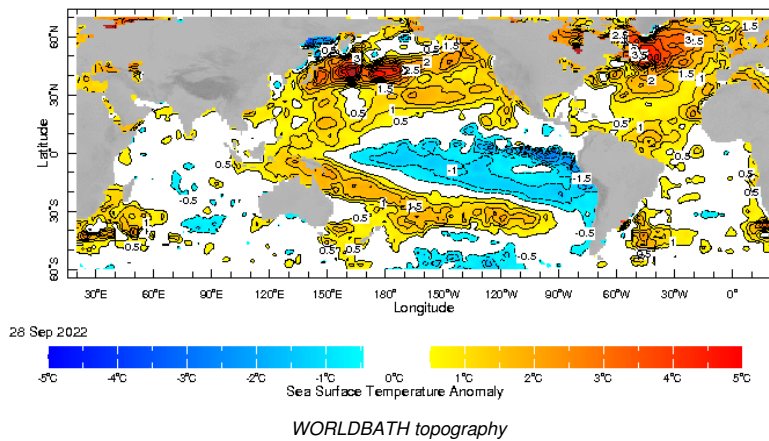


Rainfall of past 365 days (black) compared to average rainfall since 2003.

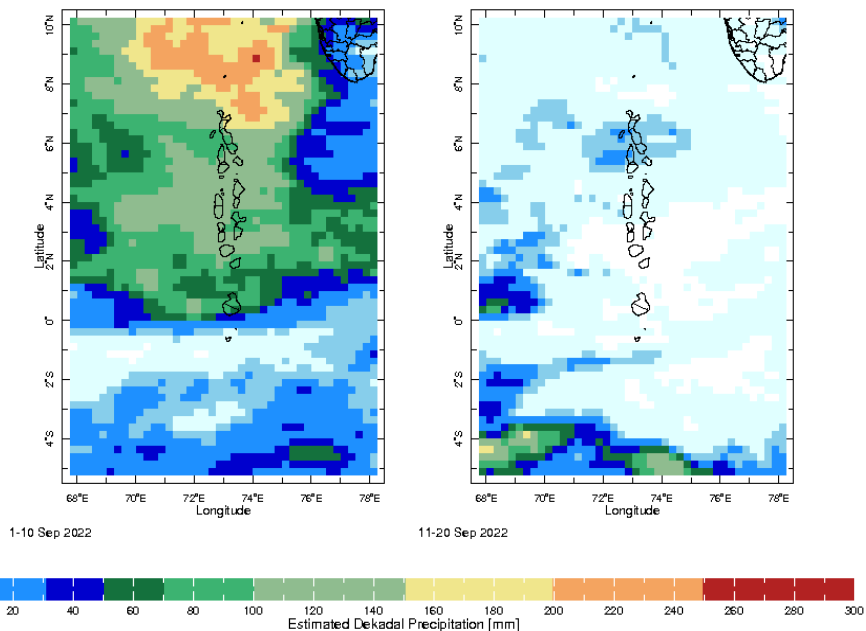


Rainfall in the past 5 years with above-average rainfall hatched in blue and below-average hatched in brown

Ocean Surface Monitoring

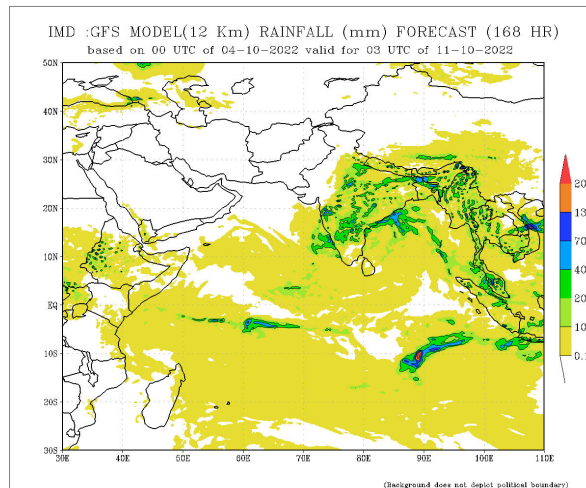
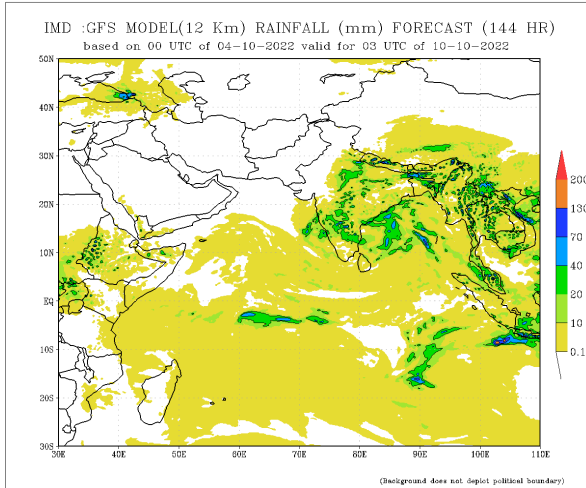
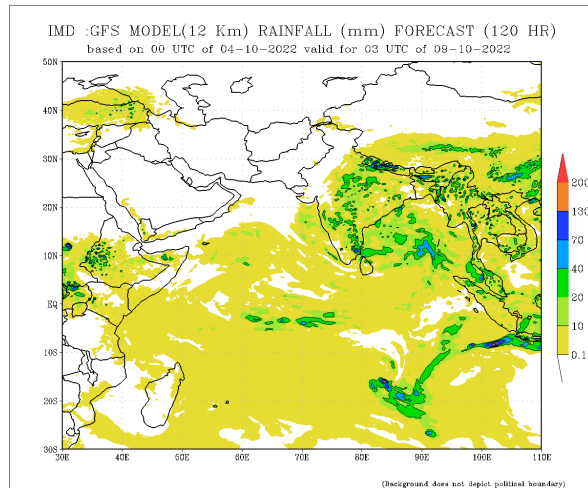
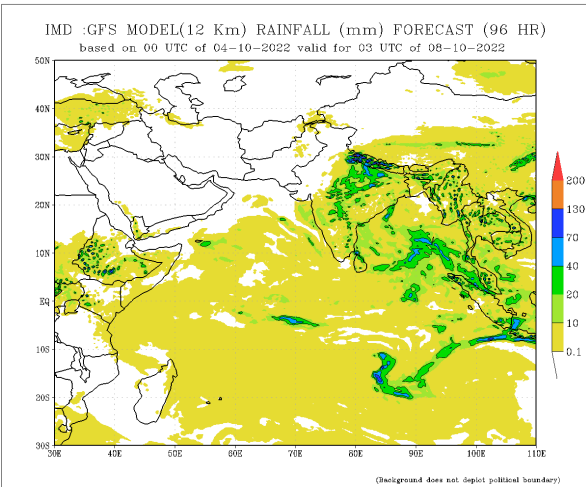
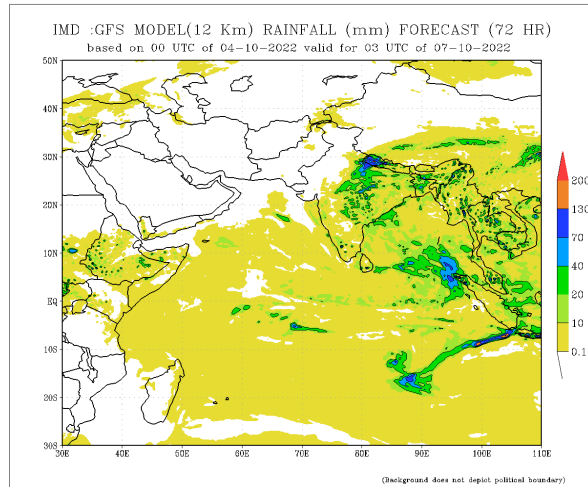
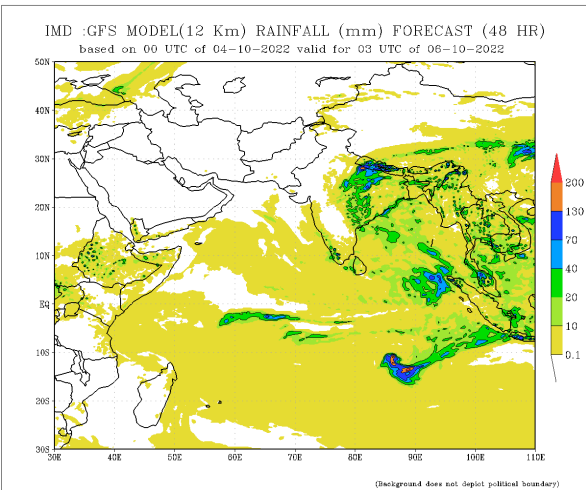
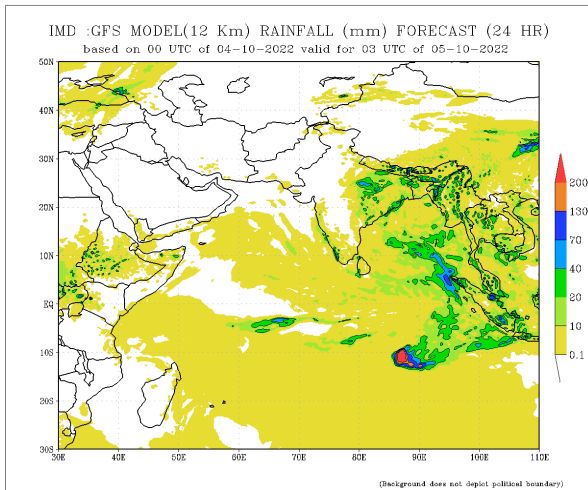


Dekadal (10 Day) Satellite Derived Rainfall Estimates

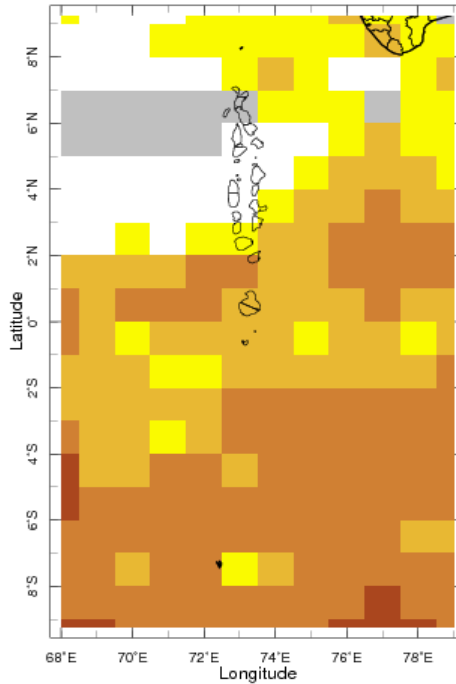


Daily Rainfall Forecast

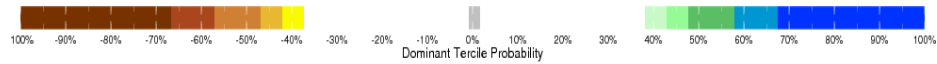
Daily Rainfall forecasts (up to 7 days ahead) from the IMD is provided in figures below. These predictions are from the GFS (T1534) model covering the entire south Asian region.



Bi-weekly Precipitation Forecast



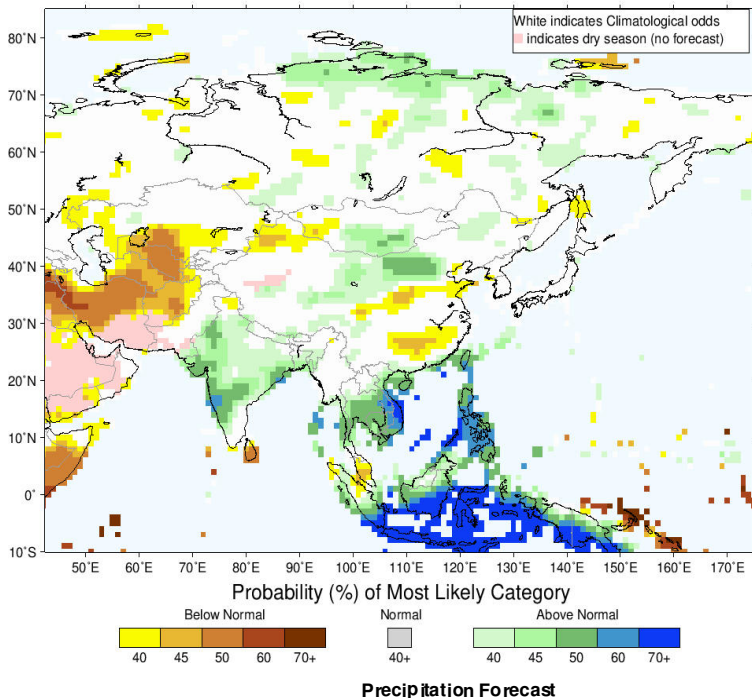
8-21 Oct 2022 IRI SubX Precipitation Forecast issued 0000 30



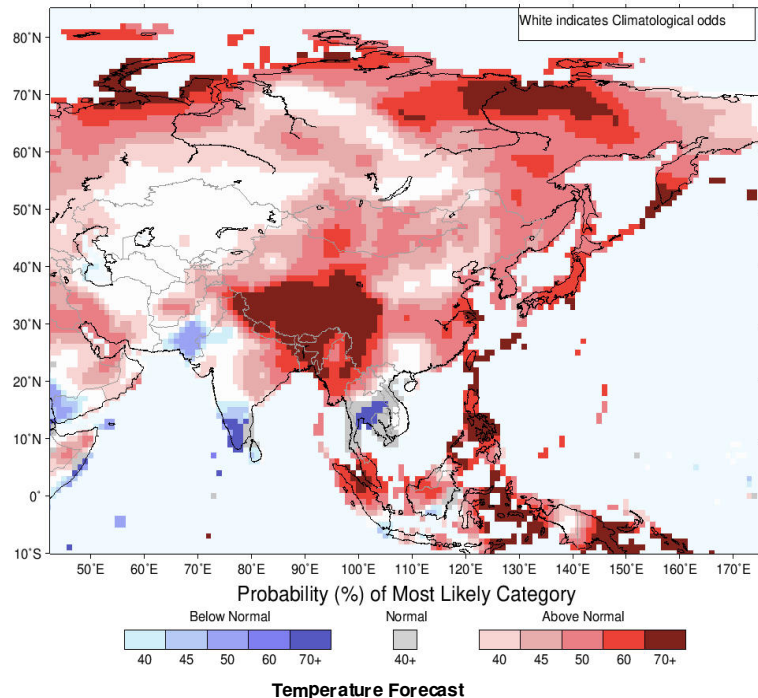
Seasonal Rainfall and Temperature Forecast

Following is the latest seasonal precipitation and temperature prediction for the next 3 months by the IRI. The color shading indicates the probability of the most dominant tercile -- that is, the tercile having the highest forecast probability. The color bar alongside the map defines these dominant tercile probability levels. The upper side of the color bar shows the colors used for increasingly strong probabilities when the dominant tercile is the above-normal tercile, while the lower side shows likewise for the below-normal tercile. The gray color indicates an enhanced probability for the near-normal tercile (nearly always limited to 40%).

IRI Multi-Model Probability Forecast for Precipitation for September–October–November 2022, Issued August 2022



IRI Multi-Model Probability Forecast for Temperature for September–October–November 2022, Issued August 2022



Subscribe to our Monthly Maldives Newsletter

email address

Subscribe

Follow @fectmv

Contact Us
 email: fectmv@gmail.com
 phone: (+96) 07 788010
 blog: www.fectmv.blogspot.com

Foundation for Environment, Climate & Technology,
 REM, Madhrasaadhohuge,
 Heneviru, Hadheebee Magu,
 Male', 20184,
 Maldives