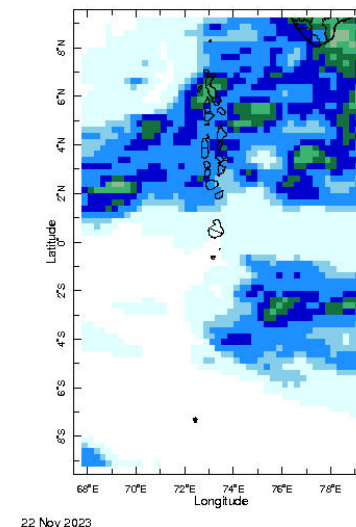
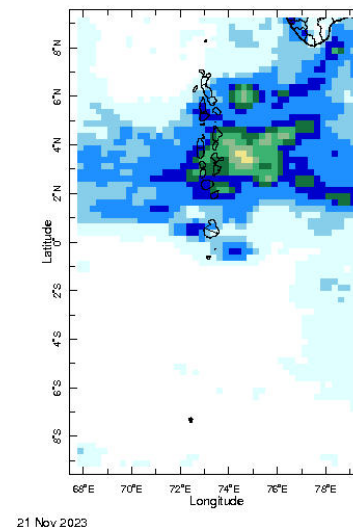
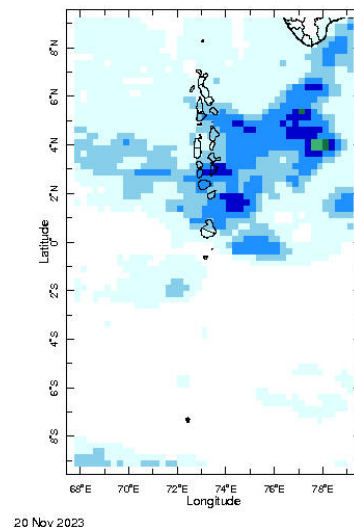
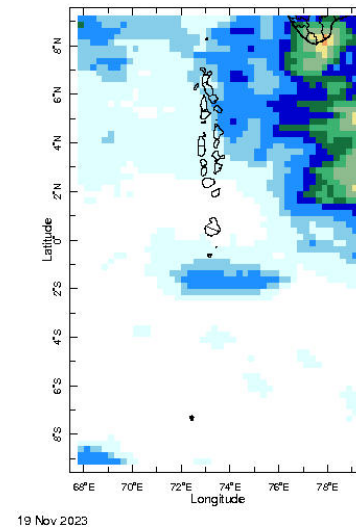
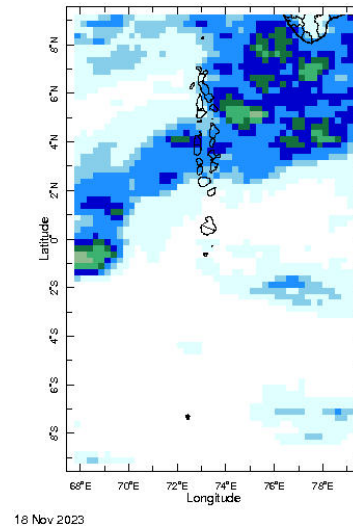
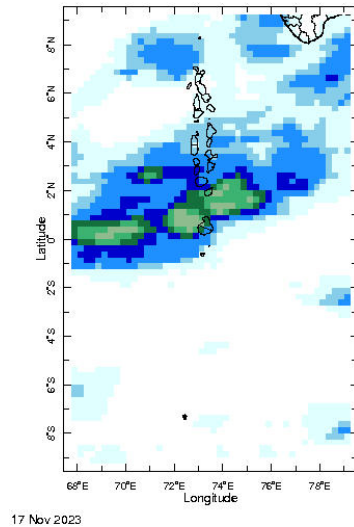
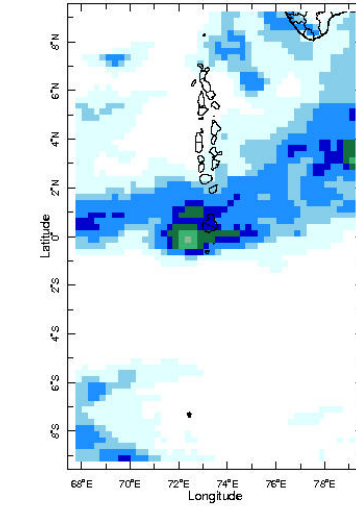
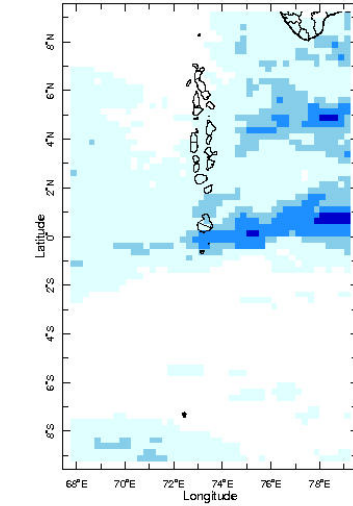
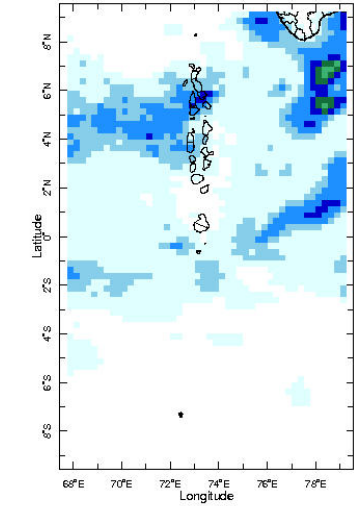
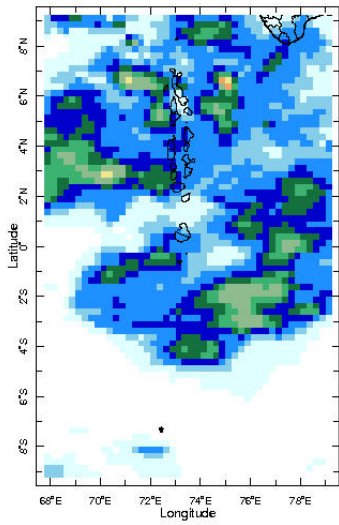




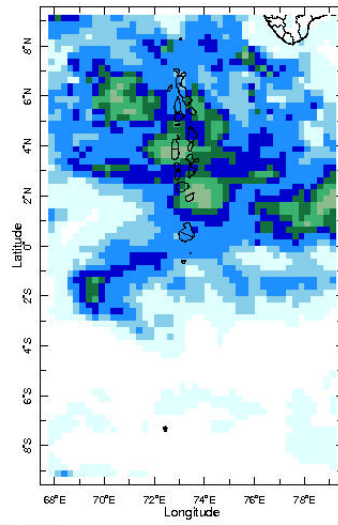
**Daily Rainfall Monitoring**

The following figures show the observed rainfall in the last 15 days in Maldives.

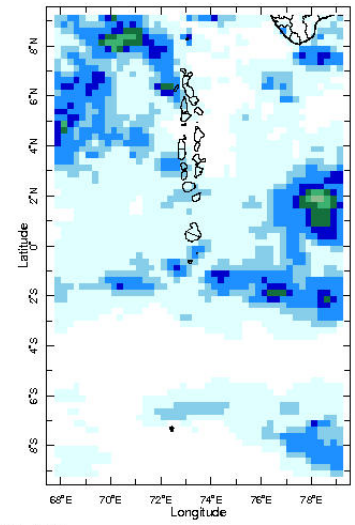




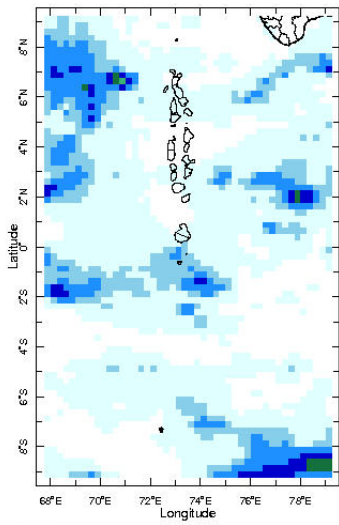
23 Nov 2023



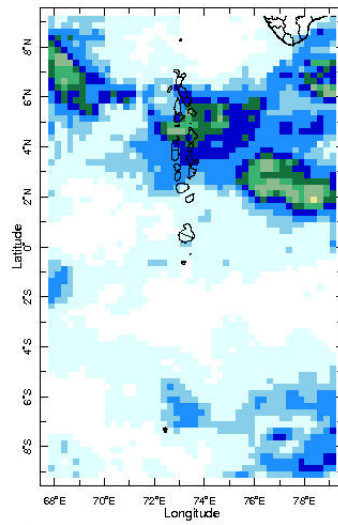
24 Nov 2023



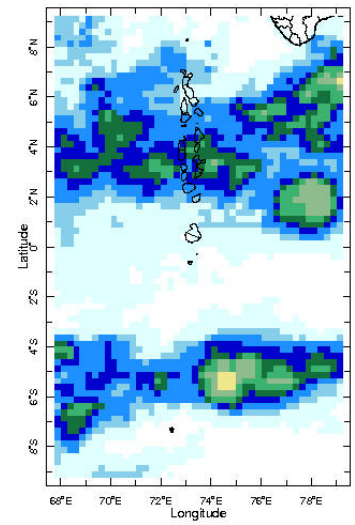
25 Nov 2023



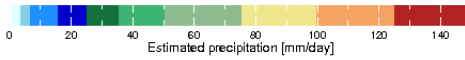
26 Nov 2023



27 Nov 2023

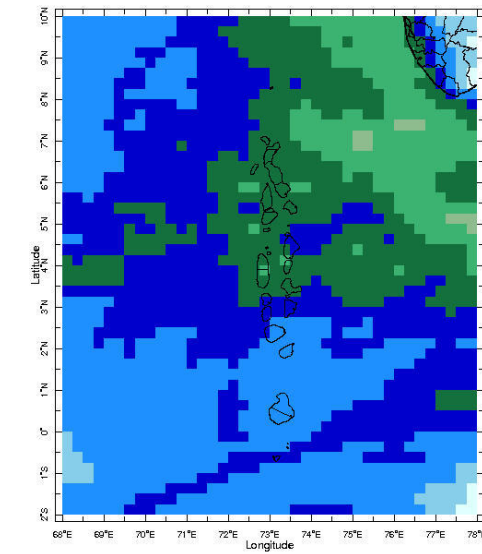


28 Nov 2023

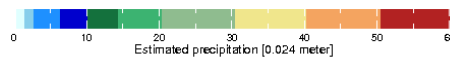


## Monthly Rainfall Monitoring

The figure shows the average observed rainfall in the previous month.



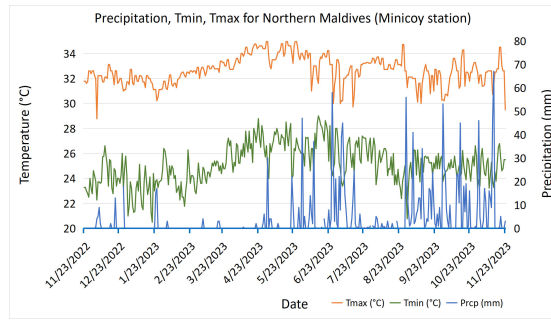
Sep 2023



Monthly Average

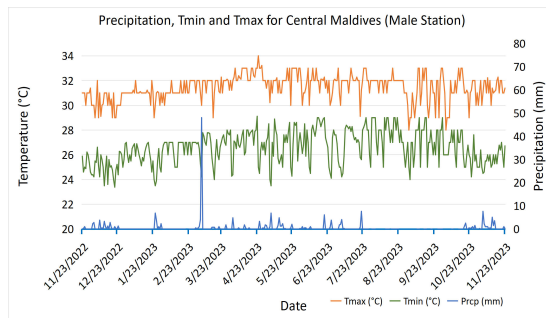
## Monthly and Seasonal Monitoring

### Northern Maldives:



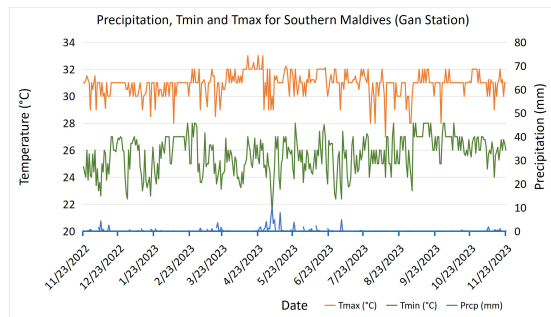
Daily Rainfall, Tmin & Tmax for the previous year in Minicoy station (2022 November to 2023 November)

### Central Maldives:



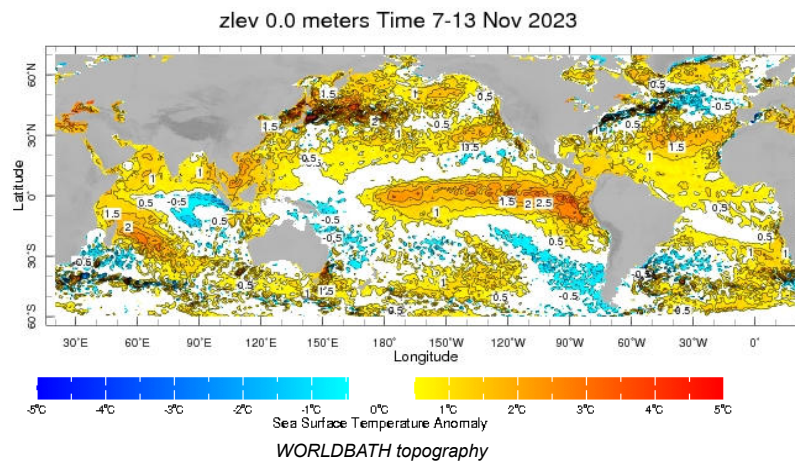
Daily Rainfall, Tmin & Tmax for the previous year in Male station (2022 November to 2023 November)

### Southern Maldives:



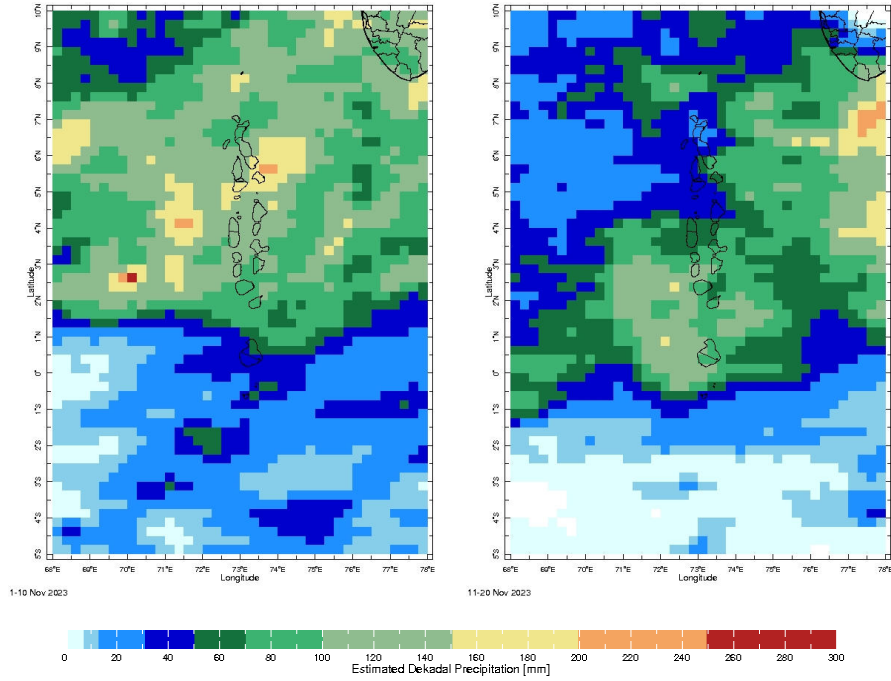
Daily Rainfall, Tmin & Tmax for the previous year in Gan station (2022 November to 2023 November)

## Ocean Surface Monitoring



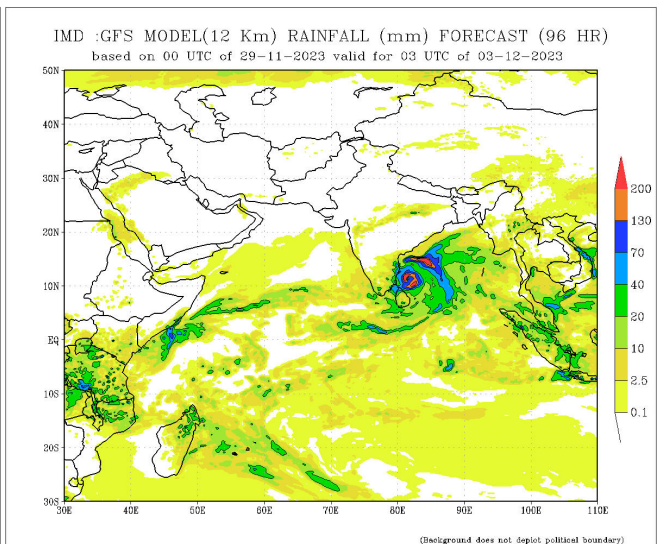
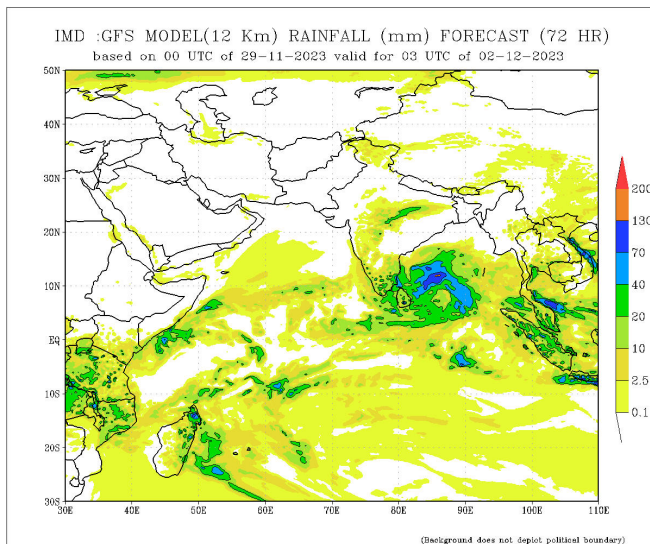
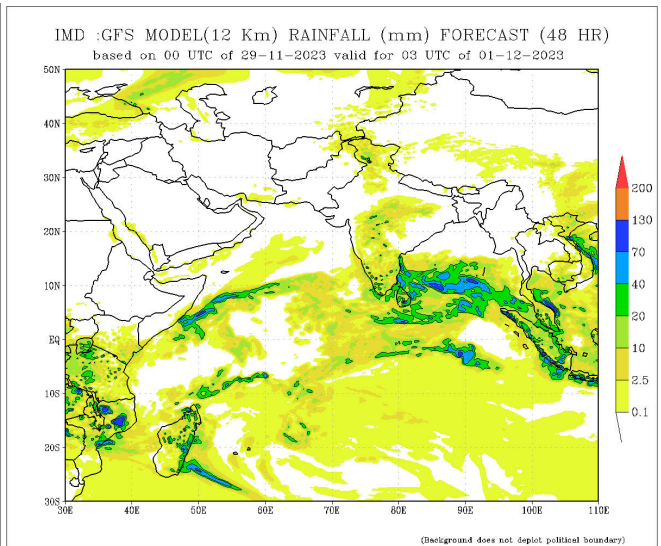
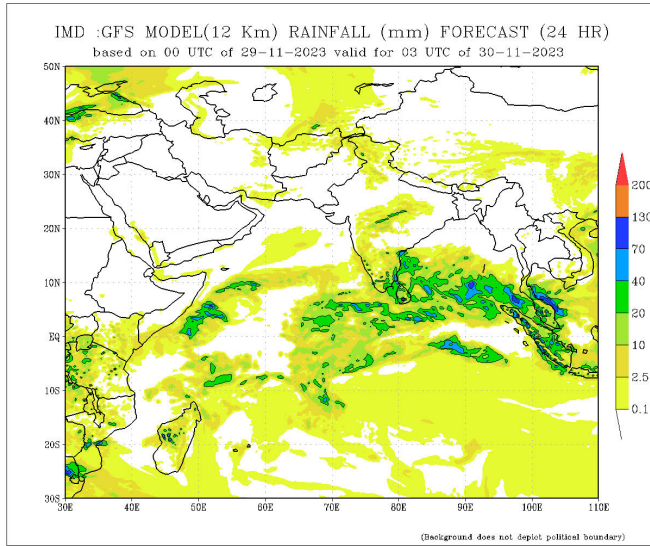


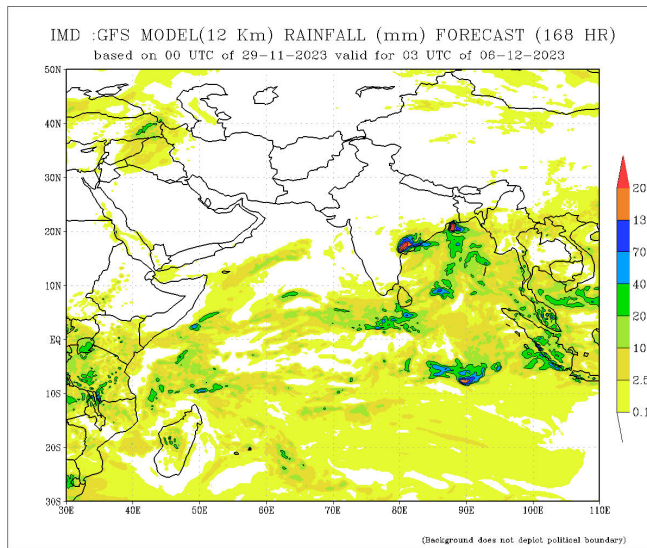
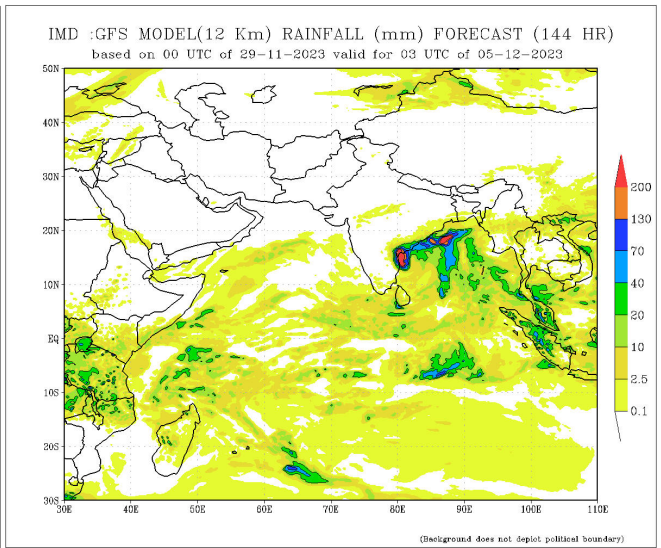
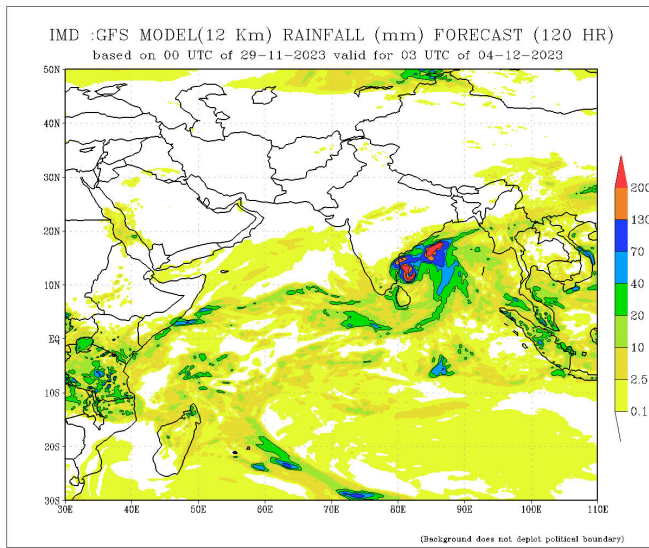
# Dekadal (10 Day) Satellite Derived Rainfall Estimates



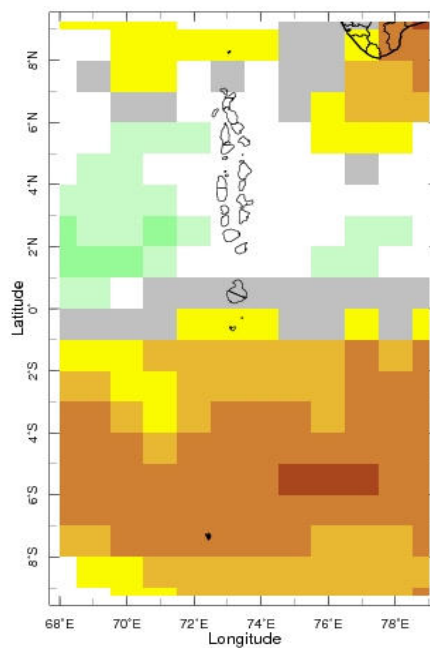
## Daily Rainfall Forecast

Daily Rainfall forecasts (up to 7 days ahead) from the IMD is provided in figures below. These predictions are from the GFS (T1534) model covering the entire south Asian region.

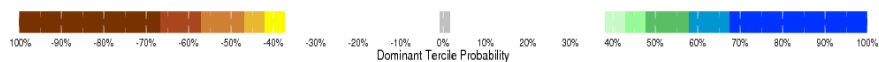




## Bi-weekly Precipitation Forecast



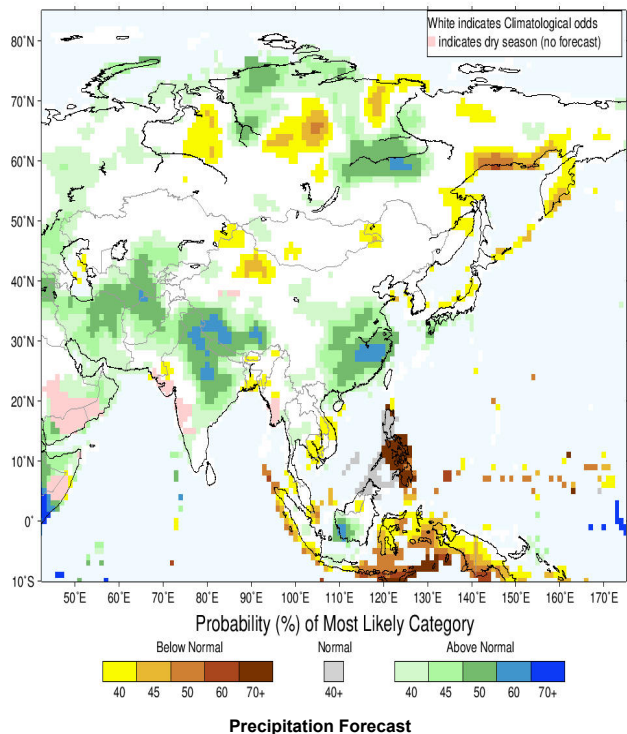
2-15 Dec 2023 IRI SubX Precipitation Forecast issued 0000 24



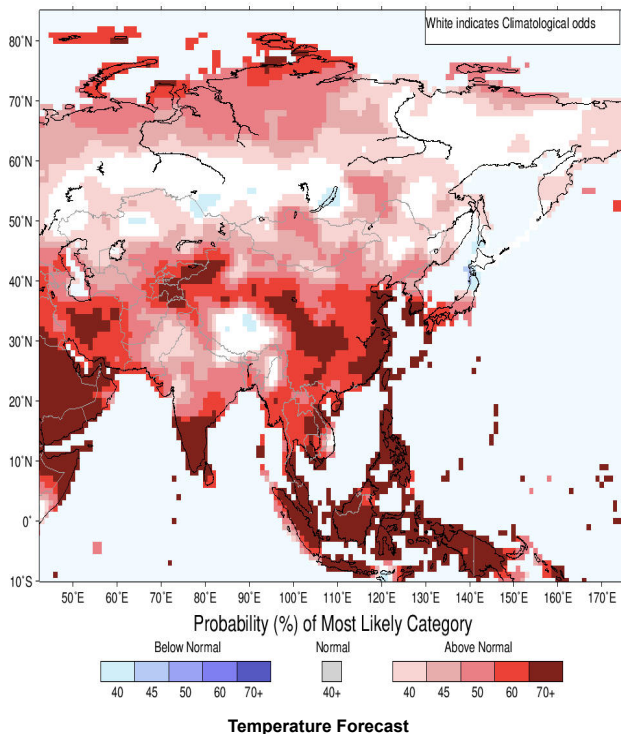
## Seasonal Rainfall and Temperature Forecast

Following is the latest seasonal precipitation and temperature prediction for the next 3 months by the IRI. The color shading indicates the probability of the most dominant tercile -- that is, the tercile having the highest forecast probability. The color bar alongside the map defines these dominant tercile probability levels. The upper side of the color bar shows the colors used for increasingly strong probabilities when the dominant tercile is the above-normal tercile, while the lower side shows likewise for the below-normal tercile. The gray color indicates an enhanced probability for the near-normal tercile (nearly always limited to 40%).

IRI Multi-Model Probability Forecast for Precipitation for December-January-February 2024, Issued November 2023



IRI Multi-Model Probability Forecast for Temperature for December-January-February 2024, Issued November 2023



Subscribe to our Monthly Maldives Newsletter

email address

Subscribe

Follow @fectmv

Contact Us  
 email: [fectmv@gmail.com](mailto:fectmv@gmail.com)  
 phone: (+96) 07 788010  
 blog: [www.fectmv.blogspot.com](http://www.fectmv.blogspot.com)

Foundation for Environment, Climate & Technology,  
 REM, Madhrasaadhoshuge,  
 Henveiru, Hadheebee Magu,  
 Male', 20184,  
 Maldives