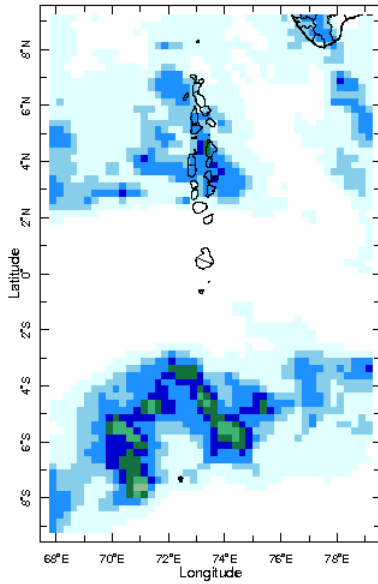


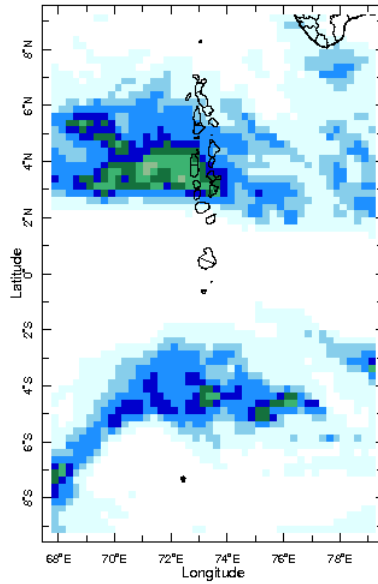


Daily Rainfall Monitoring

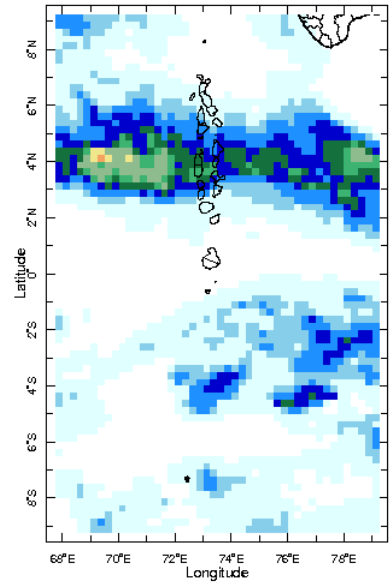
The following figures show the observed rainfall in the last 15 days in Maldives.



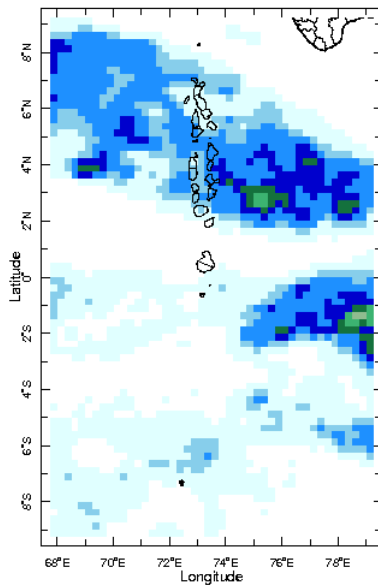
16 Nov 2022



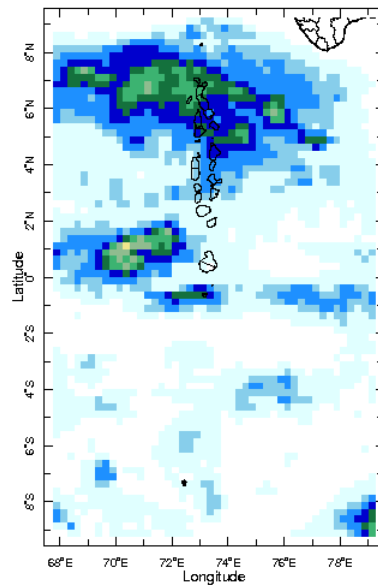
17 Nov 2022



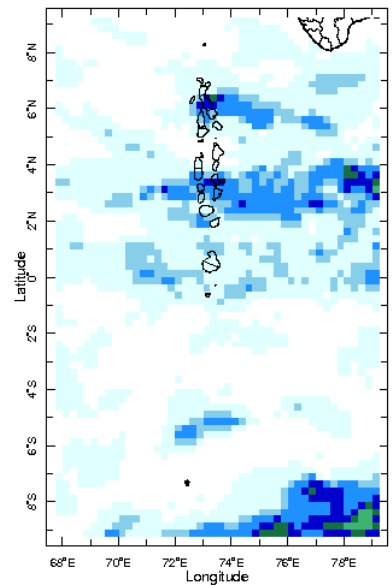
18 Nov 2022



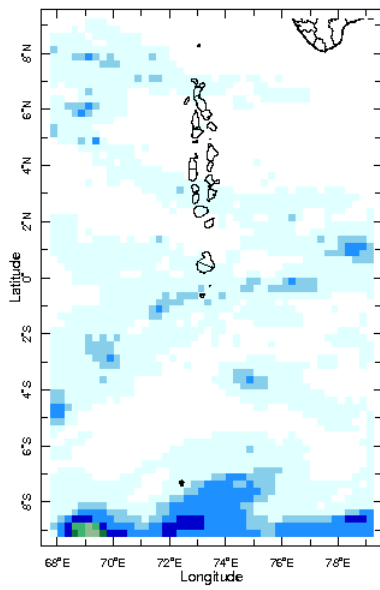
19 Nov 2022



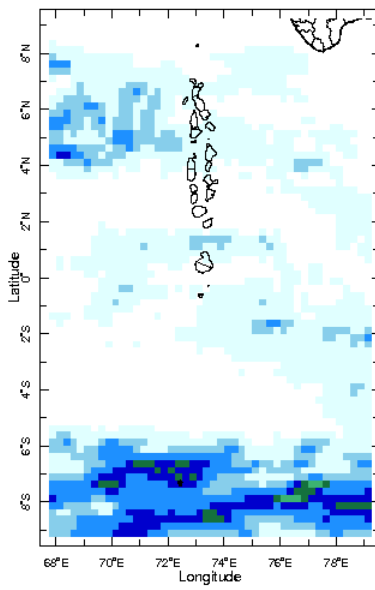
20 Nov 2022



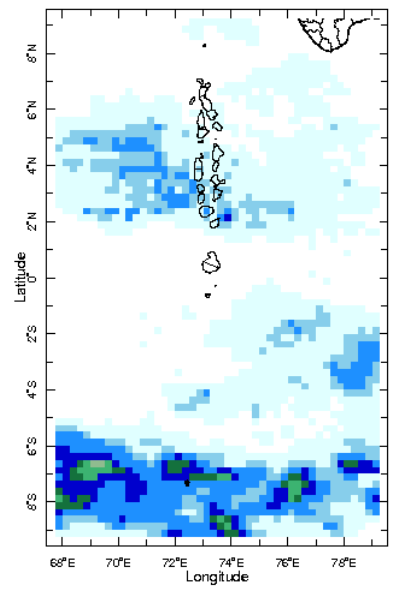
21 Nov 2022



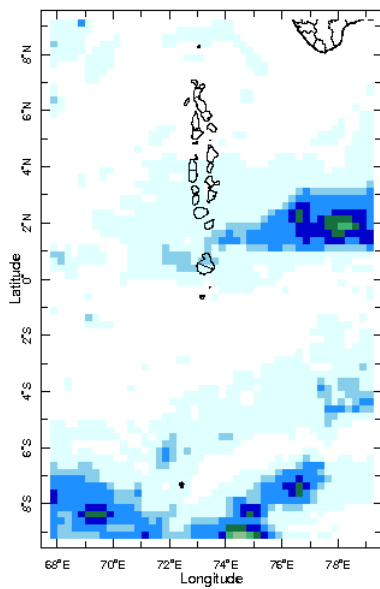
22 Nov 2022



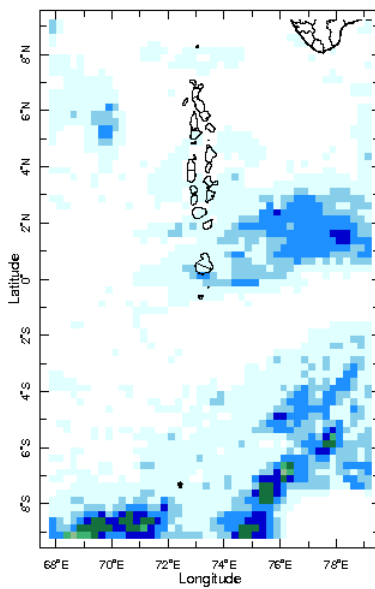
23 Nov 2022



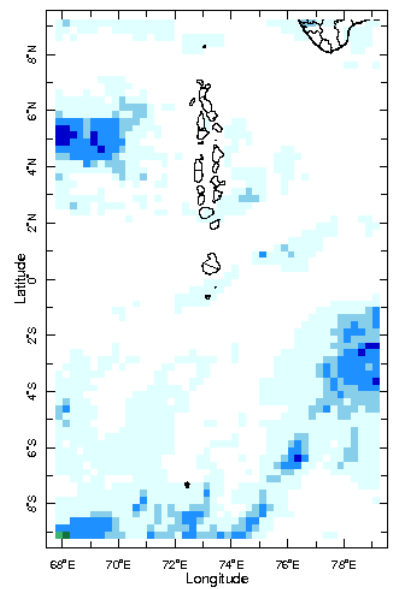
24 Nov 2022



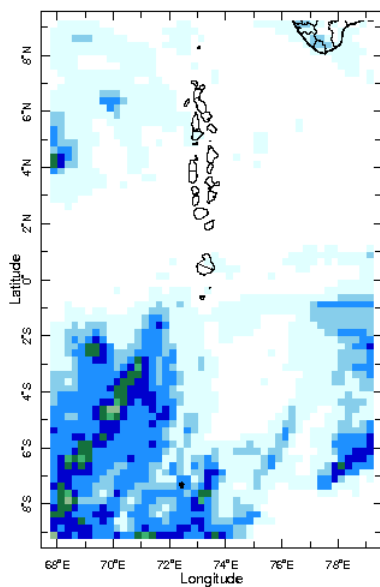
25 Nov 2022



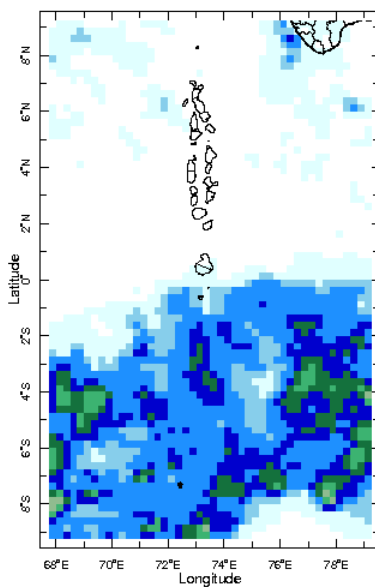
26 Nov 2022



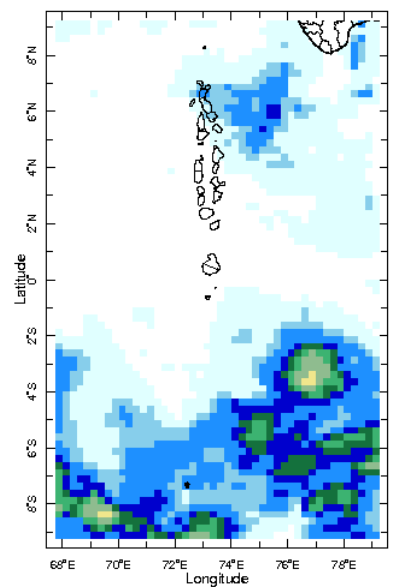
27 Nov 2022



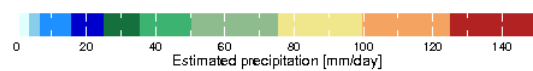
28 Nov 2022



29 Nov 2022

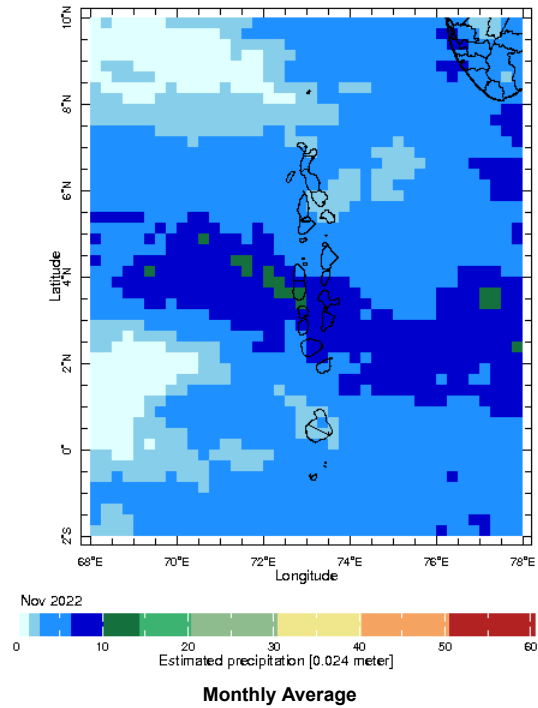


30 Nov 2022



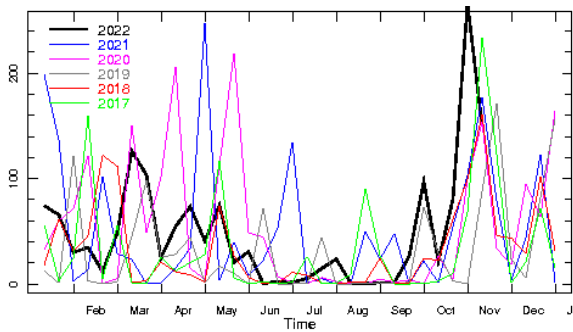
Monthly Rainfall Monitoring

The figure shows the average observed rainfall in the previous month.



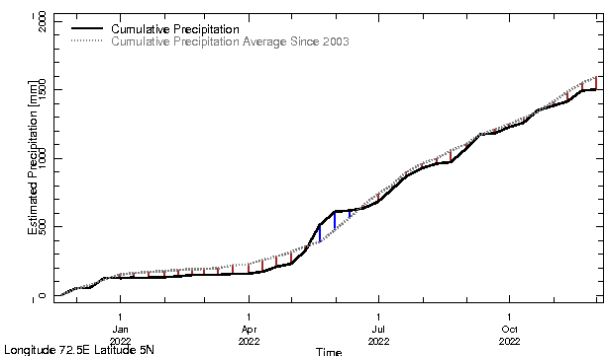
Monthly and Seasonal Monitoring

Northern Maldives:



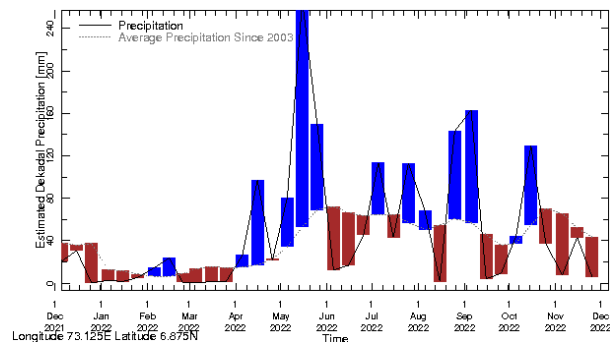
Long Longitude 73.125E Latitude 6.875N

Rainfall in the current year (black) compared to rainfall in previous 5 years



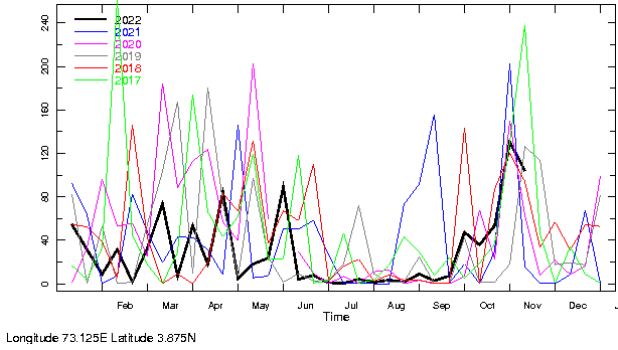
Longitude 72.5E Latitude 6N

Rainfall of past 365 days (black) compared to average rainfall since 2003.

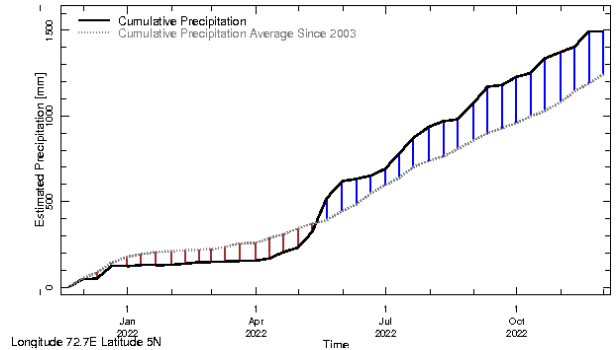


Rainfall in the past 5 years with above-average rainfall hatched in blue and below-average hatched in brown

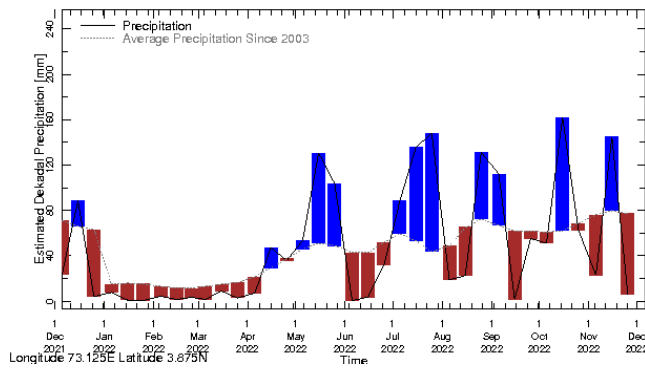
Central Maldives:



Rainfall in the current year (black) compared to rainfall in previous 5 years

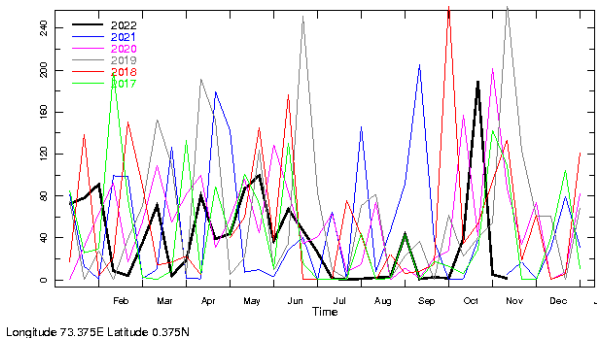


Rainfall of past 365 days (black) compared to average rainfall since 2003.

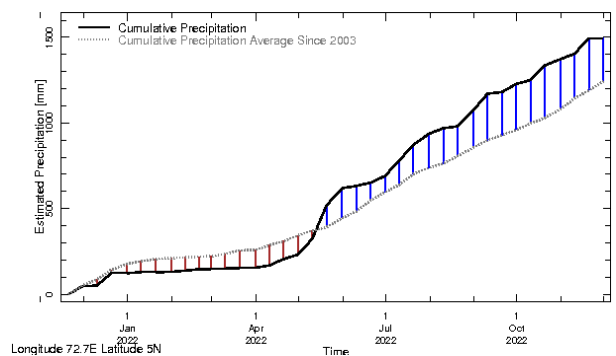


Rainfall in the past 5 years with above-average rainfall hatched in blue and below-average hatched in brown

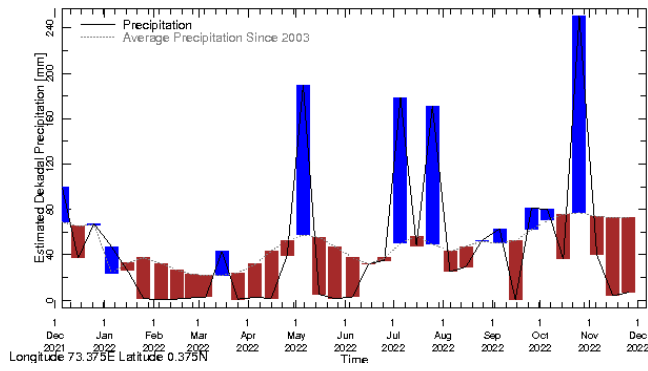
Southern Maldives:



Rainfall in the current year (black) compared to rainfall in previous 5 years

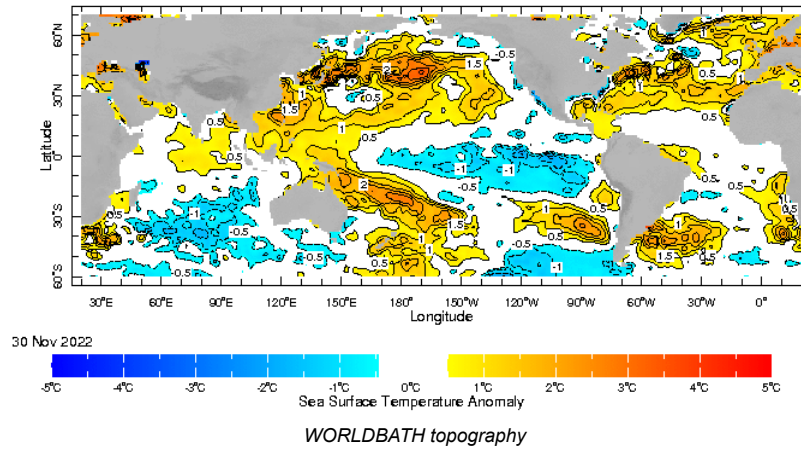


Rainfall of past 365 days (black) compared to average rainfall since 2003.

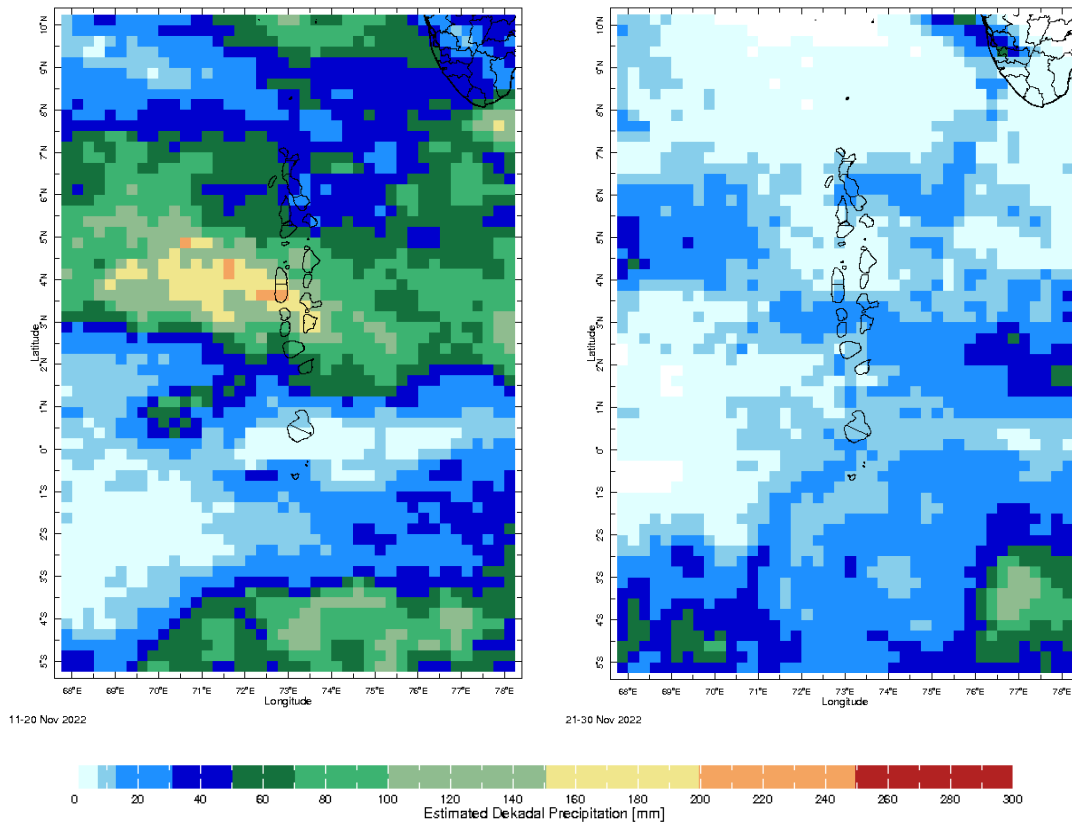


Rainfall in the past 5 years with above-average rainfall hatched in blue and below-average hatched in brown

Ocean Surface Monitoring

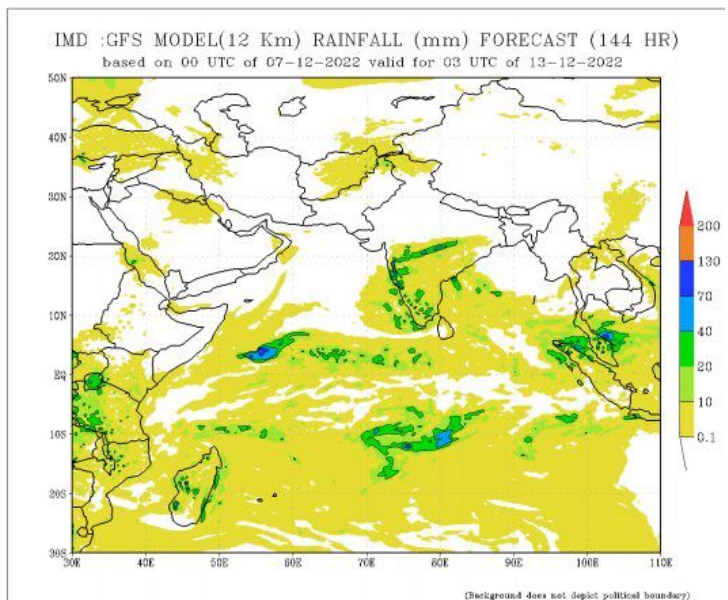
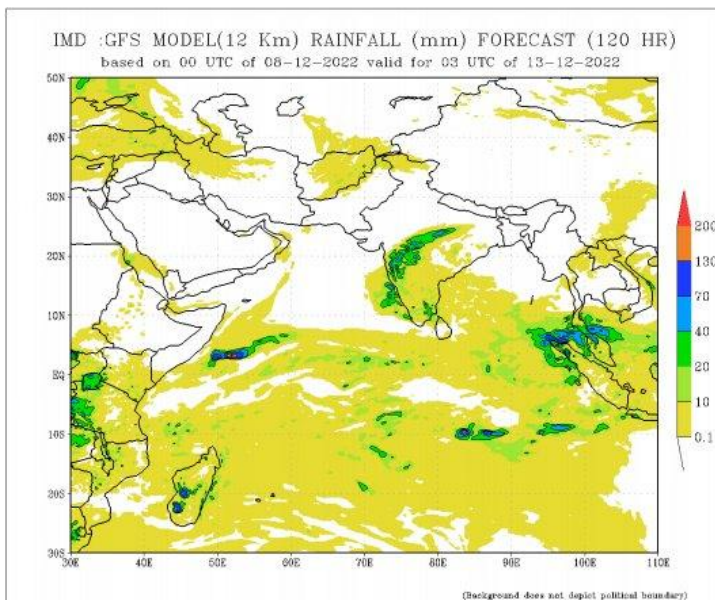
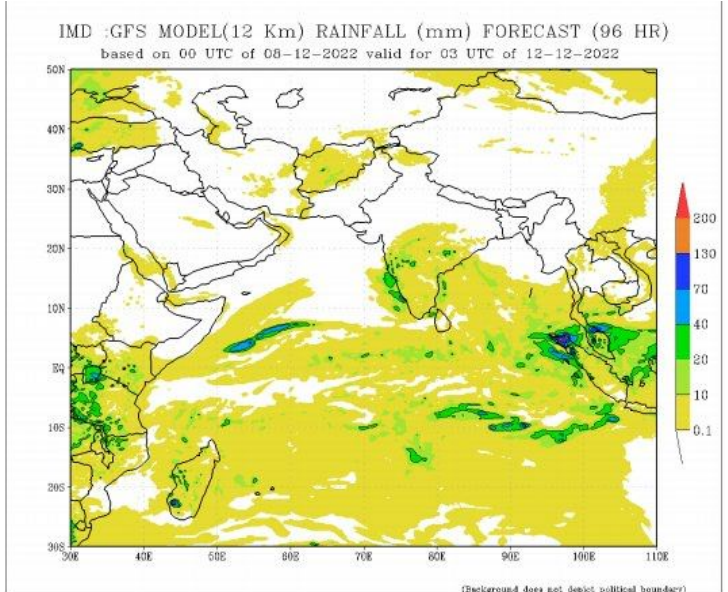
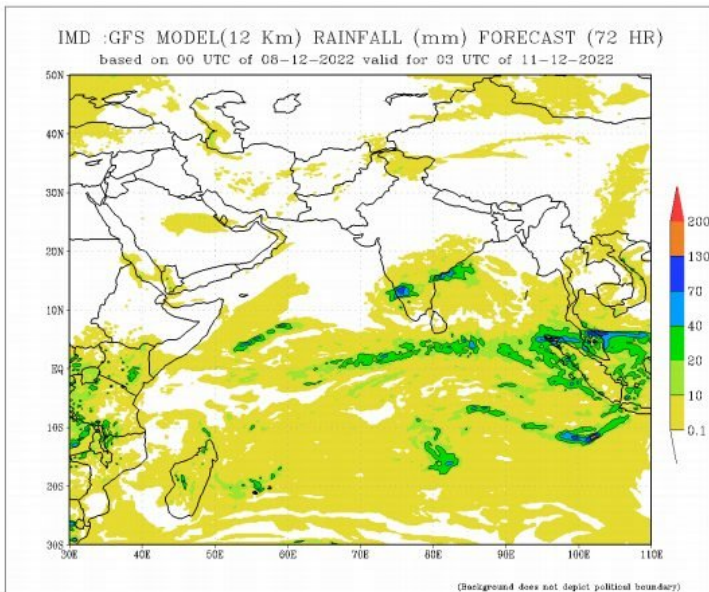
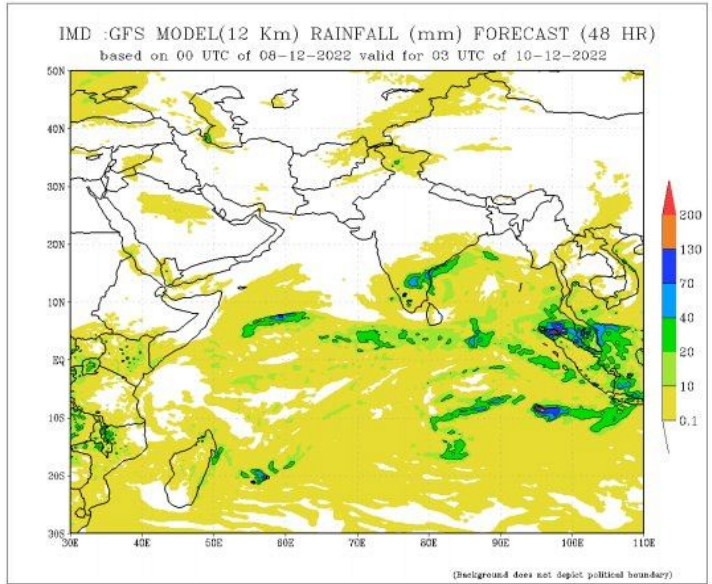
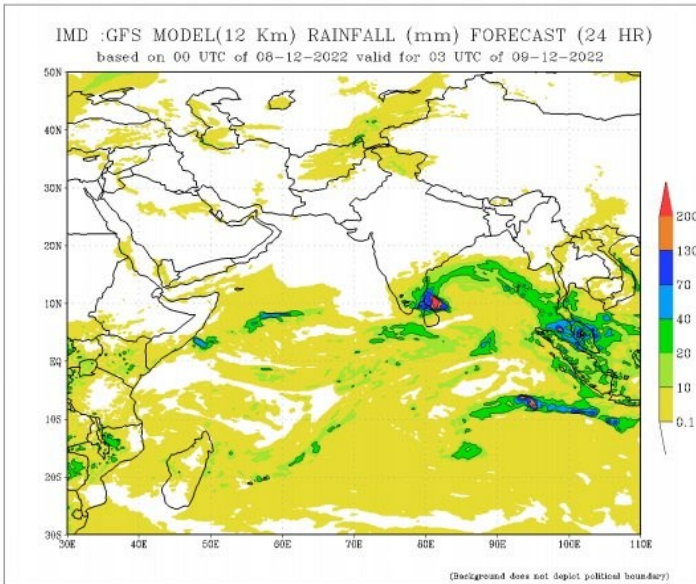


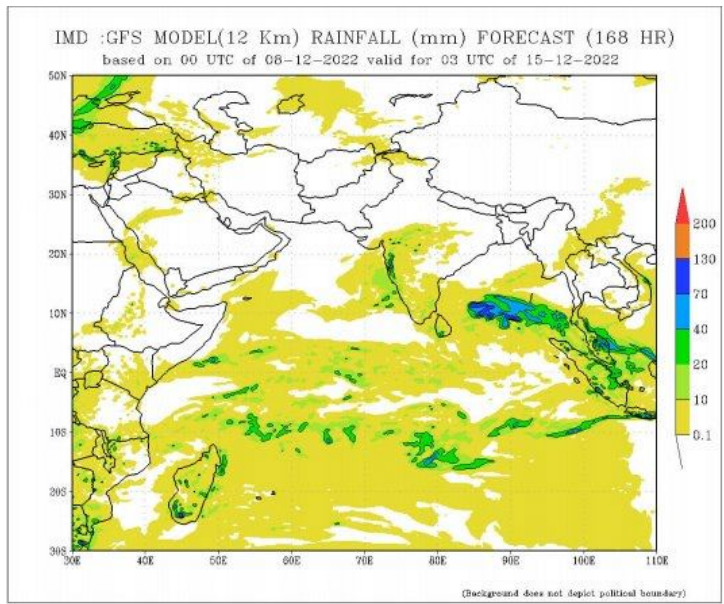
Dekadal (10 Day) Satellite Derived Rainfall Estimates



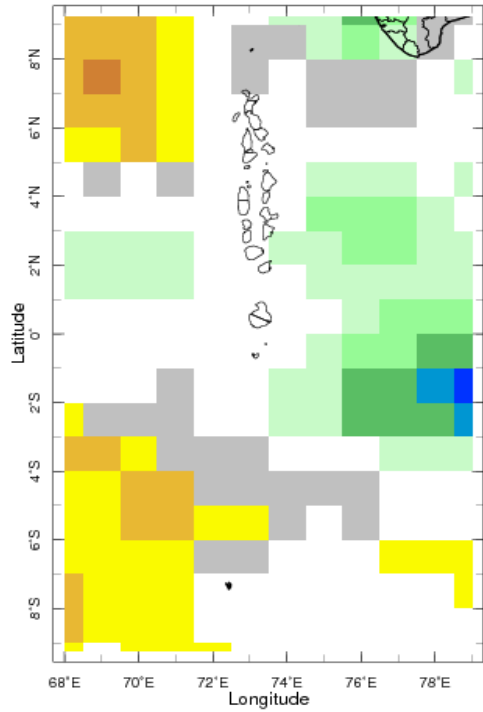
Daily Rainfall Forecast

Daily Rainfall forecasts (up to 7 days ahead) from the IMD is provided in figures below. These predictions are from the GFS (T1534) model covering the entire south Asian region.





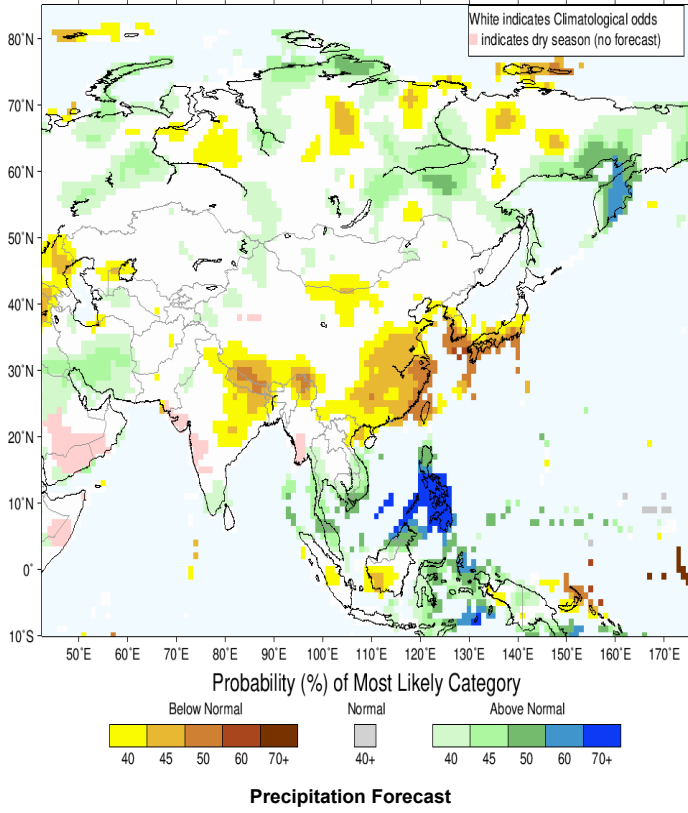
Bi-weekly Precipitation Forecast



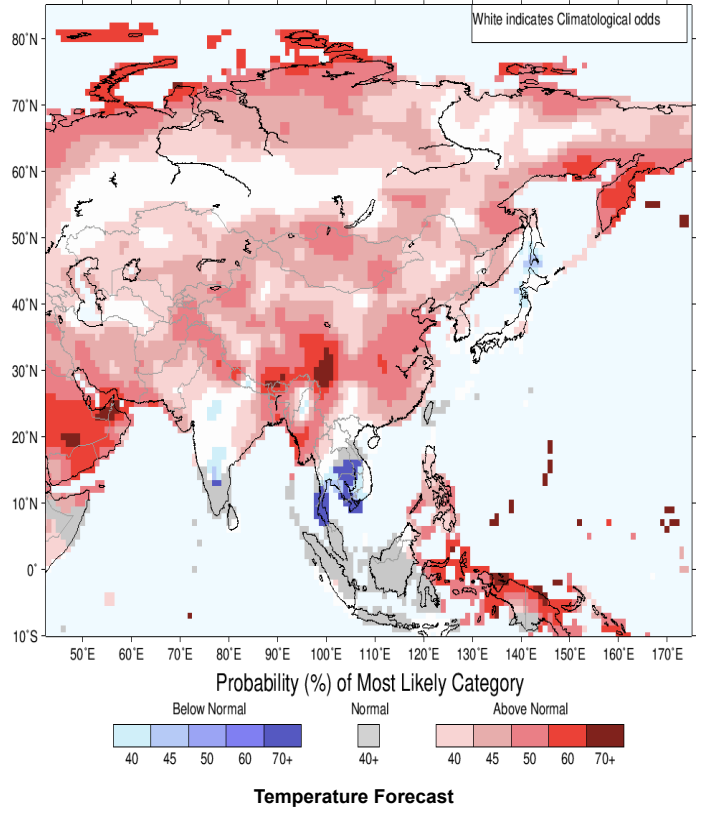
Seasonal Rainfall and Temperature Forecast

Following is the latest seasonal precipitation and temperature prediction for the next 3 months by the IRI. The color shading indicates the probability of the most dominant tercile – that is, the tercile having the highest forecast probability. The color bar alongside the map defines these dominant tercile probability levels. The upper side of the color bar shows the colors used for increasingly strong probabilities when the dominant tercile is the above-normal tercile, while the lower side shows likewise for the below-normal tercile. The gray color indicates an enhanced probability for the near-normal tercile (nearly always limited to 40%).

IRI Multi-Model Probability Forecast for Precipitation for December-January-February 2023, Issued November 2022



IRI Multi-Model Probability Forecast for Temperature for December-January-February 2023, Issued November 2022



Subscribe to our Monthly Maldives Newsletter

email address

Contact Us
 email: fectmv@gmail.com
 phone: (+96) 07 788010
 blog: www.fectmv.blogspot.com

Foundation for Environment, Climate & Technology,
 REM, Madhrasaadhoshuge,
 Henveiru, Hadheebee Magu,
 Male', 20184,
 Maldives