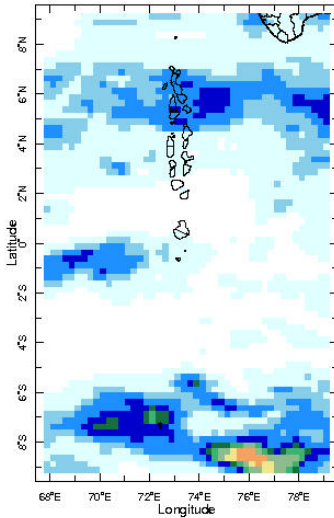


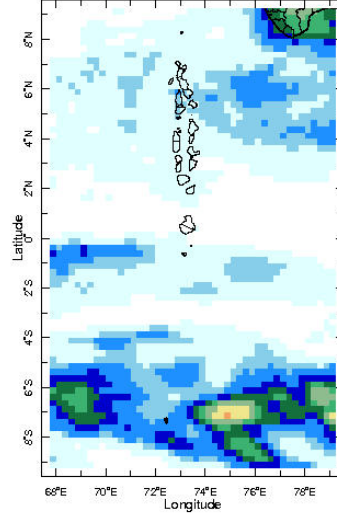


Daily Rainfall Monitoring

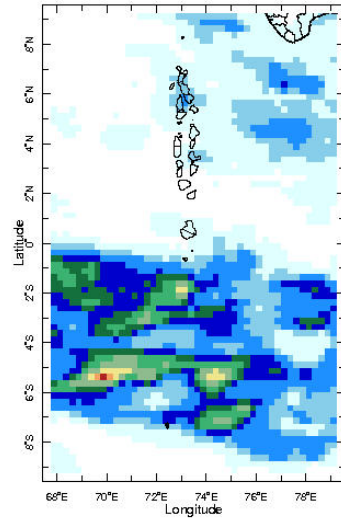
The following figures show the observed rainfall in the last 15 days in Maldives.



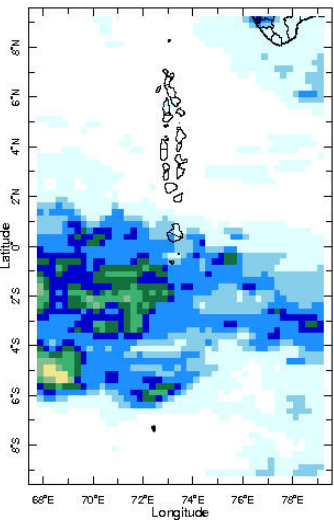
16 Nov 2021



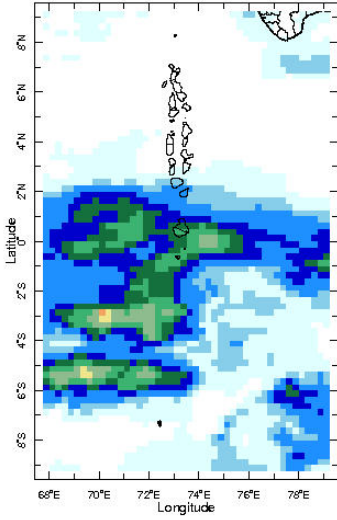
17 Nov 2021



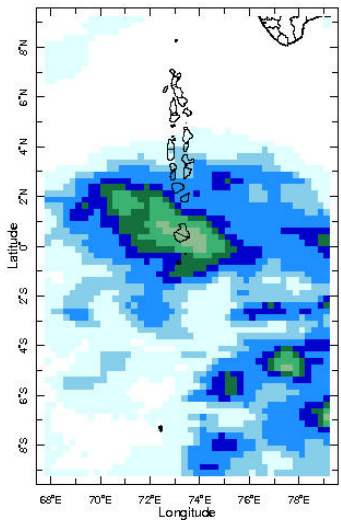
18 Nov 2021



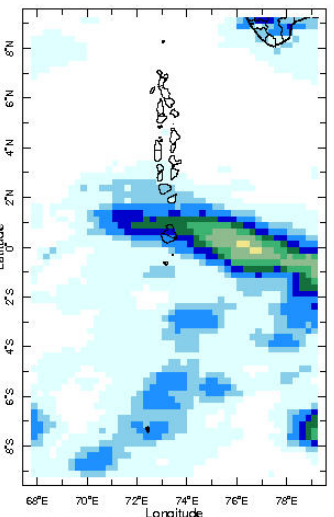
19 Nov 2021



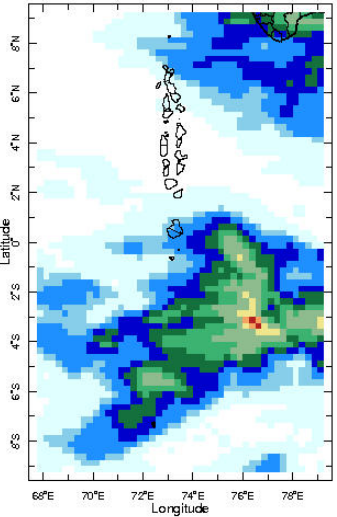
20 Nov 2021



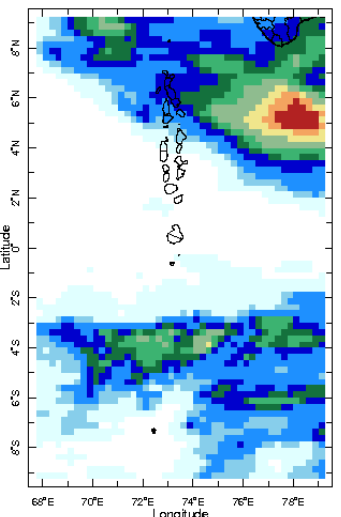
21 Nov 2021



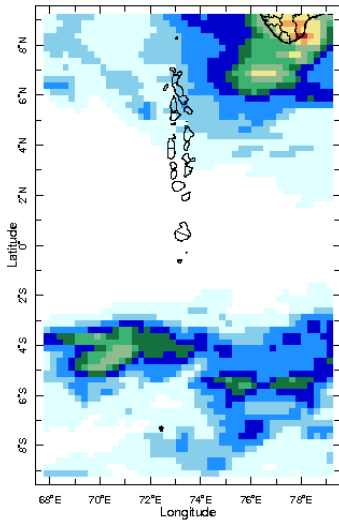
22 Nov 2021



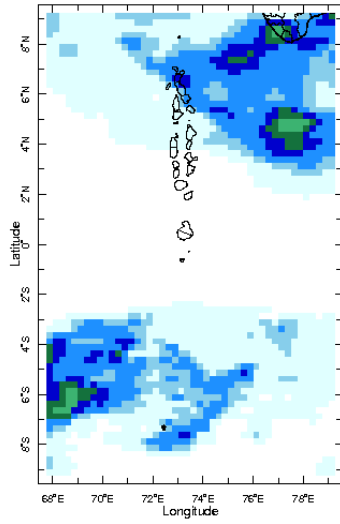
23 Nov 2021



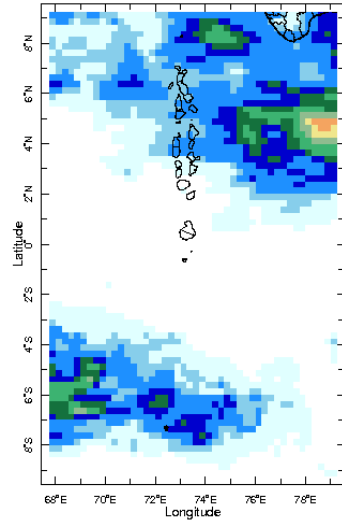
24 Nov 2021



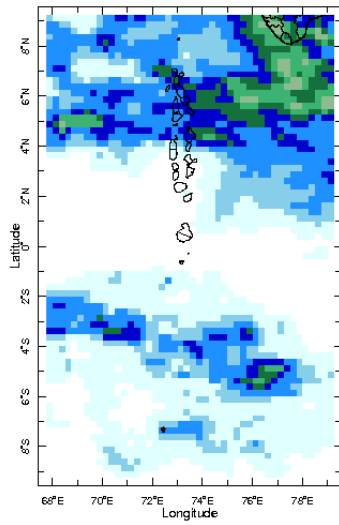
25 Nov 2021



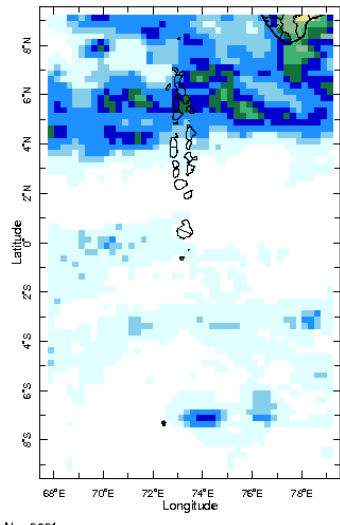
26 Nov 2021



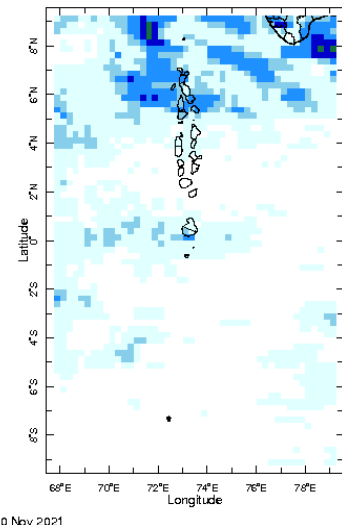
27 Nov 2021



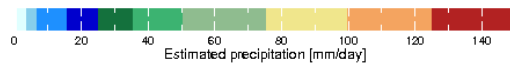
28 Nov 2021



29 Nov 2021

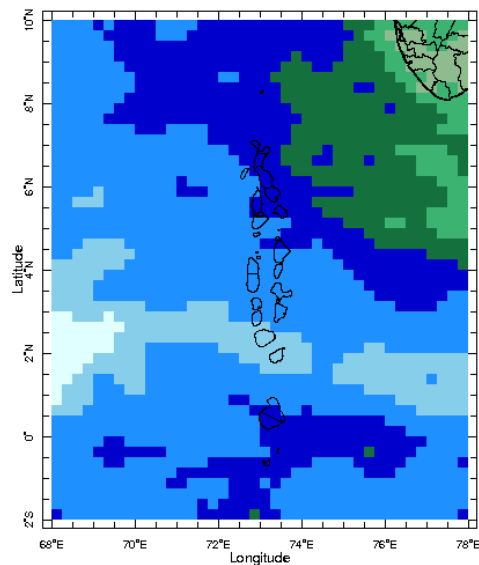


30 Nov 2021

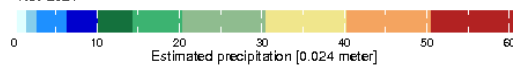


Monthly Rainfall Monitoring

The figure shows the average observed rainfall in the previous month.



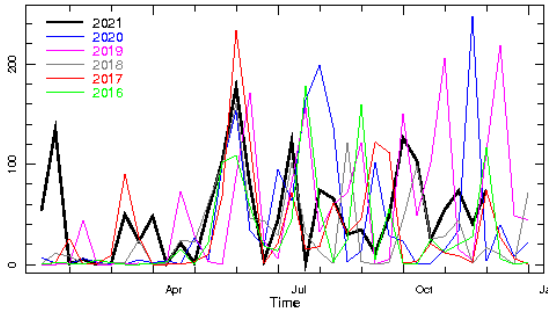
Nov 2021



Monthly Average

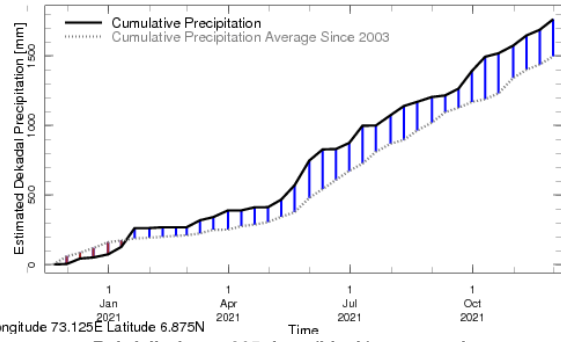
Monthly and Seasonal Monitoring

Northern Maldives:



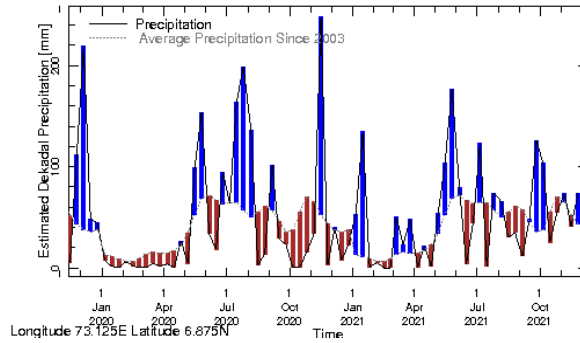
Longitude 73.125E Latitude 6.875N

Rainfall in the current year (black) compared to rainfall in previous 5 years



Longitude 73.125E Latitude 6.875N

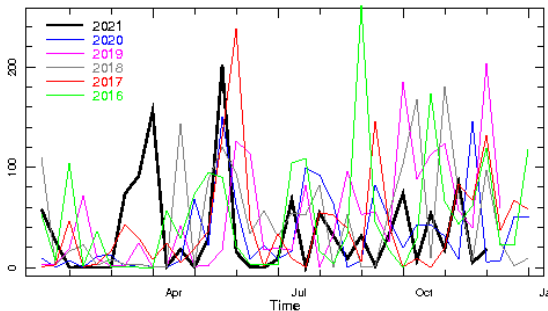
Rainfall of past 365 days (black) compared to average rainfall since 2003.



Longitude 73.125E Latitude 6.875N

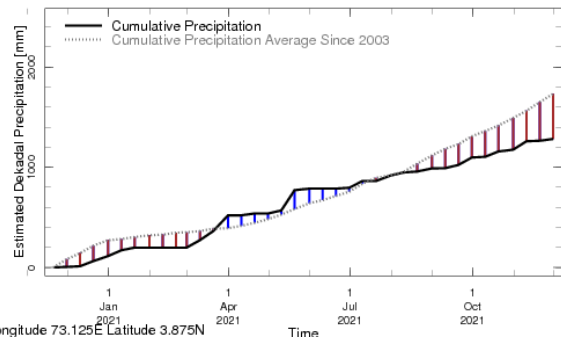
Rainfall in the past 5 years with above-average rainfall hatched in blue and below-average hatched in brown

Central Maldives:



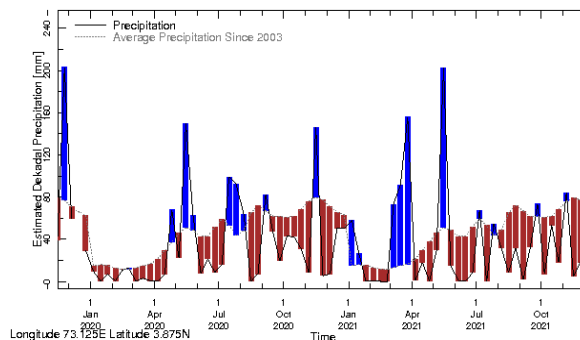
Longitude 73.125E Latitude 3.875N

Rainfall in the current year (black) compared to rainfall in previous 5 years



Longitude 73.125E Latitude 3.875N

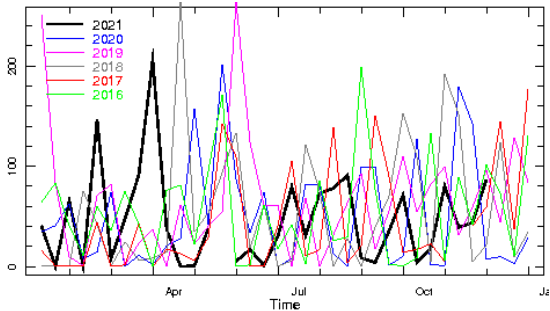
Rainfall of past 365 days (black) compared to average rainfall since 2003.



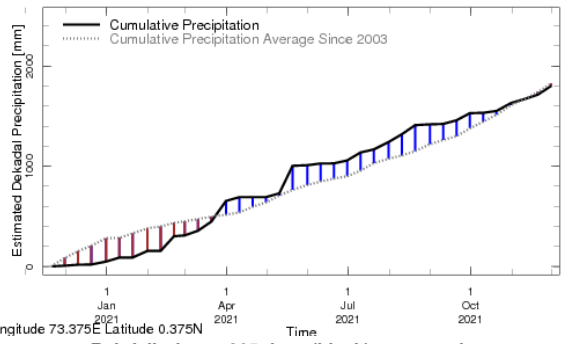
Longitude 73.125E Latitude 3.875N

Rainfall in the past 5 years with above-average rainfall hatched in blue and below-average hatched in brown

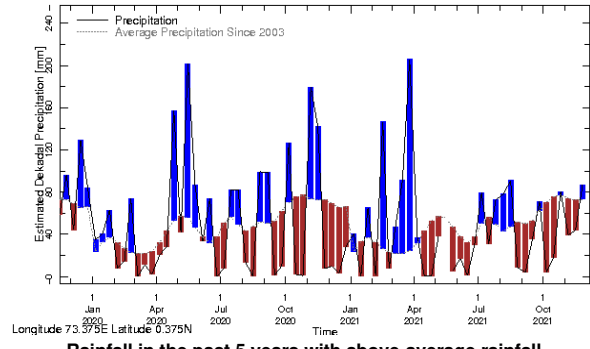
Southern Maldives:



Longitude 73.375E Latitude 0.375N
Rainfall in the current year (black) compared to rainfall in previous 5 years

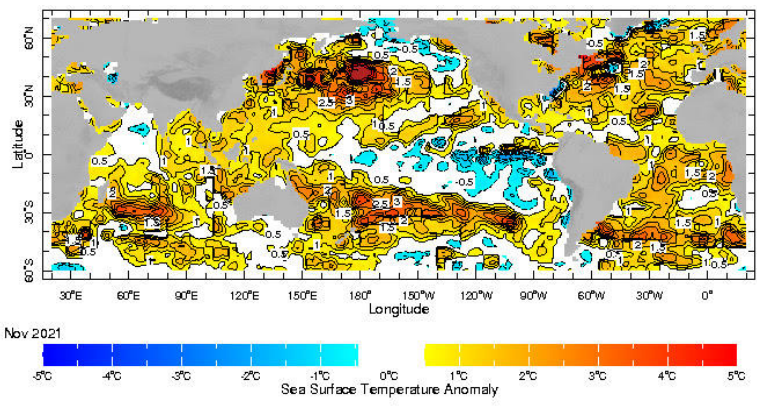


Longitude 73.375E Latitude 0.375N
Rainfall of past 365 days (black) compared to average rainfall since 2003.



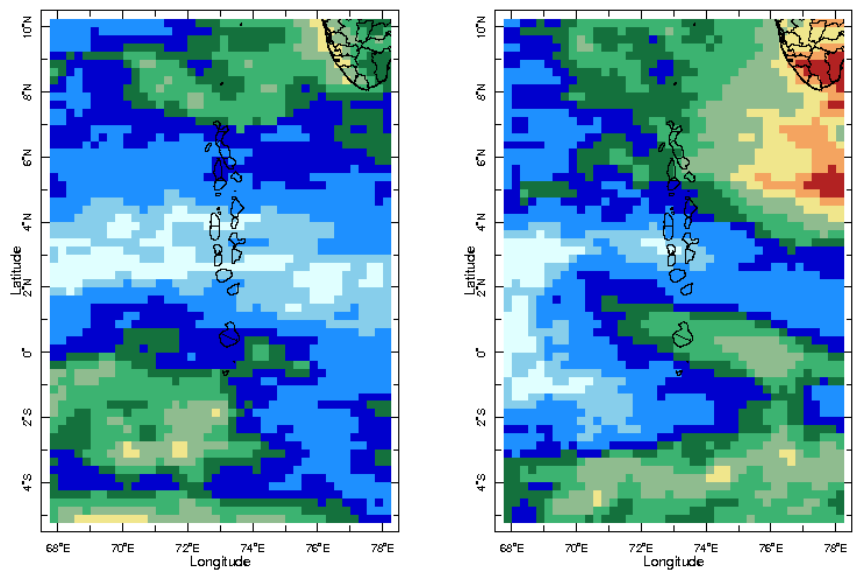
Longitude 73.375E Latitude 0.375N
Rainfall in the past 5 years with above-average rainfall hatched in blue and below-average hatched in brown

Ocean Surface Monitoring



WORLDBATH topography

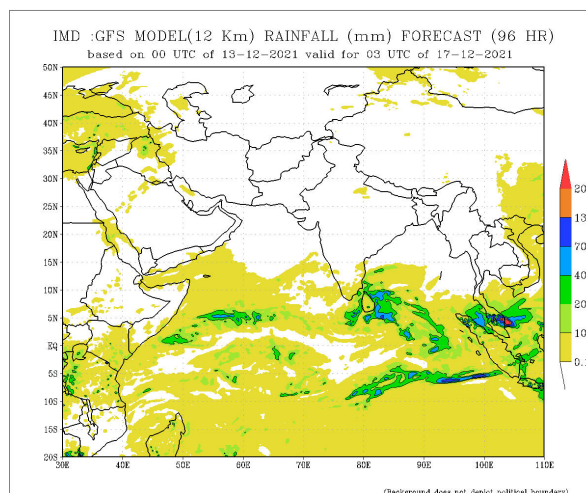
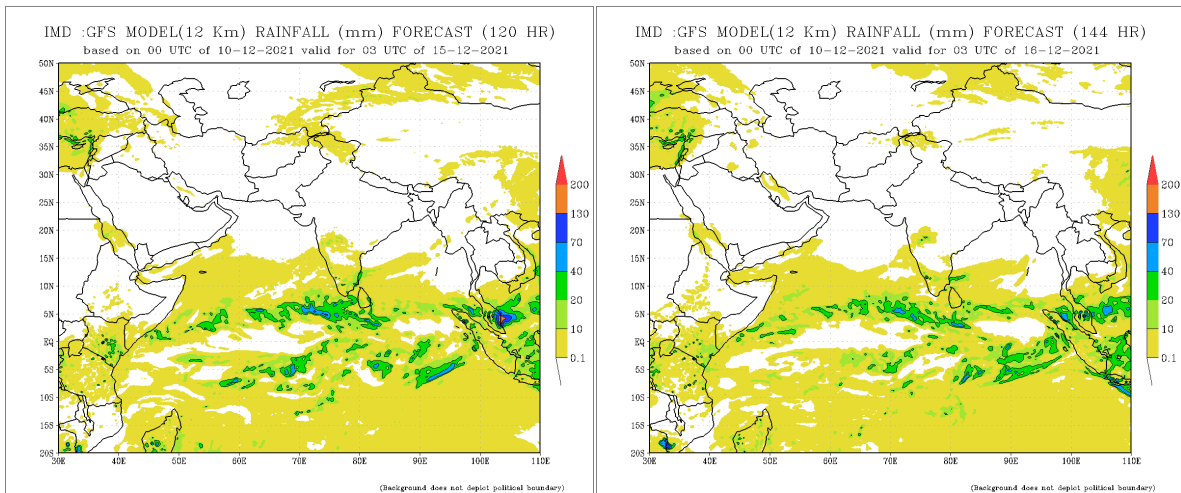
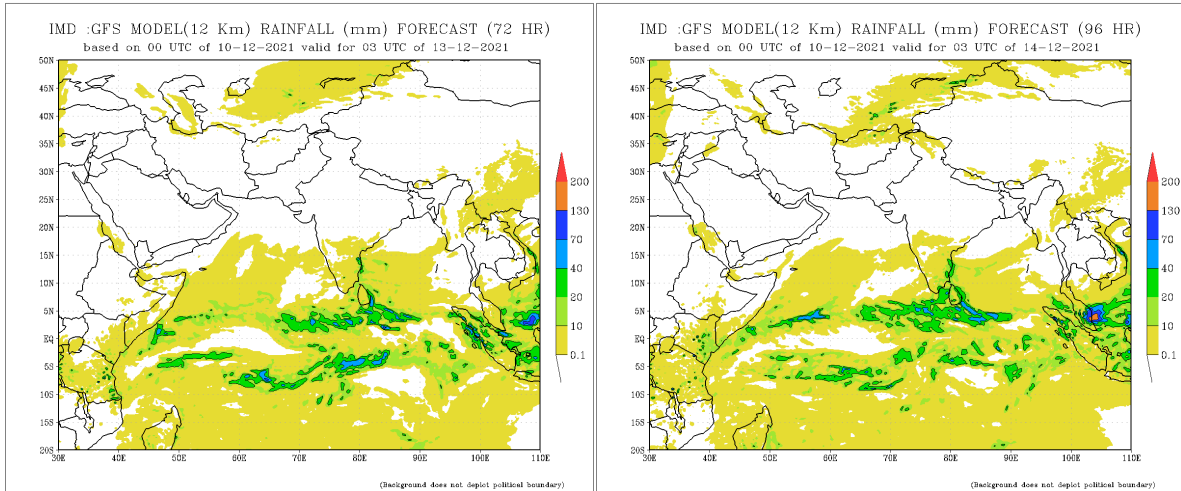
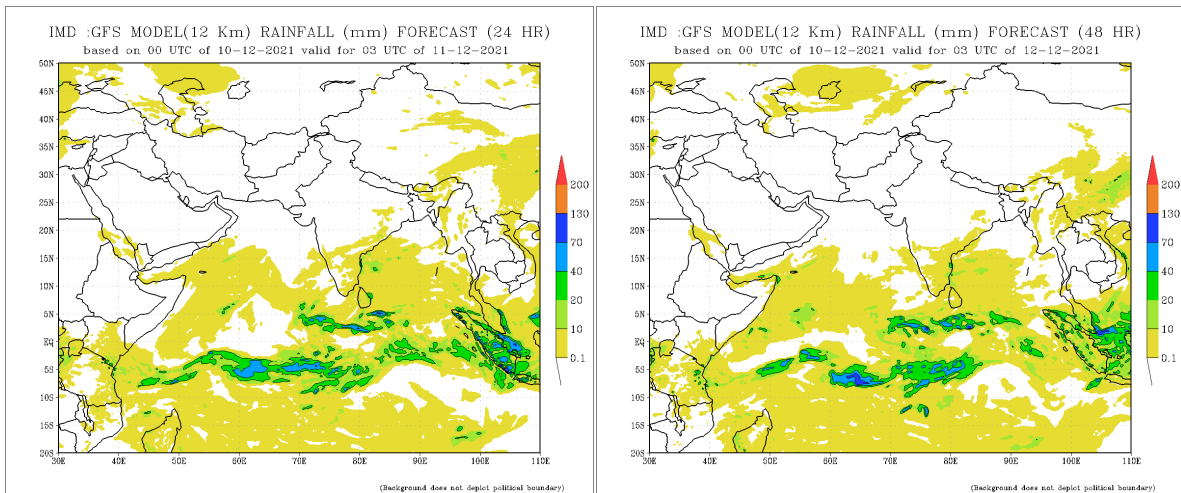
Dekadal (10 Day) Satellite Derived Rainfall Estimates



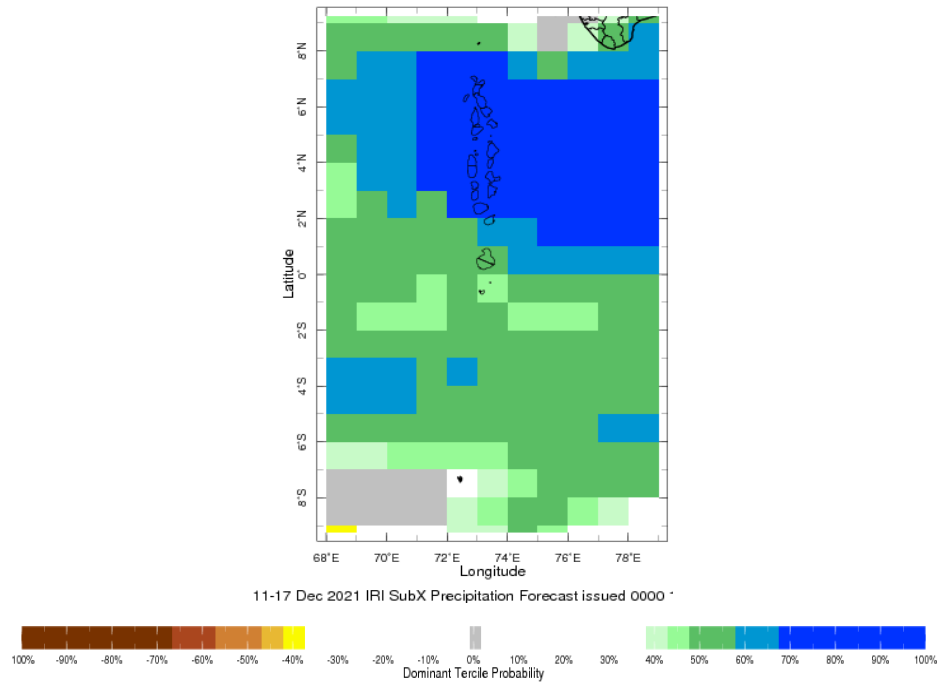
11-20 Nov 2021 21-30 Nov 2021
 0 20 40 60 80 100 120 140 160 180 200 220 240 260 280 300
 Estimated Dekadal Precipitation [mm]

Daily Rainfall Forecast

Daily Rainfall forecasts (up to 7 days ahead) from the IMD is provided in figures below. These predictions are from the GFS (T1534) model covering the entire south Asian region.



Weekly Precipitation Forecast

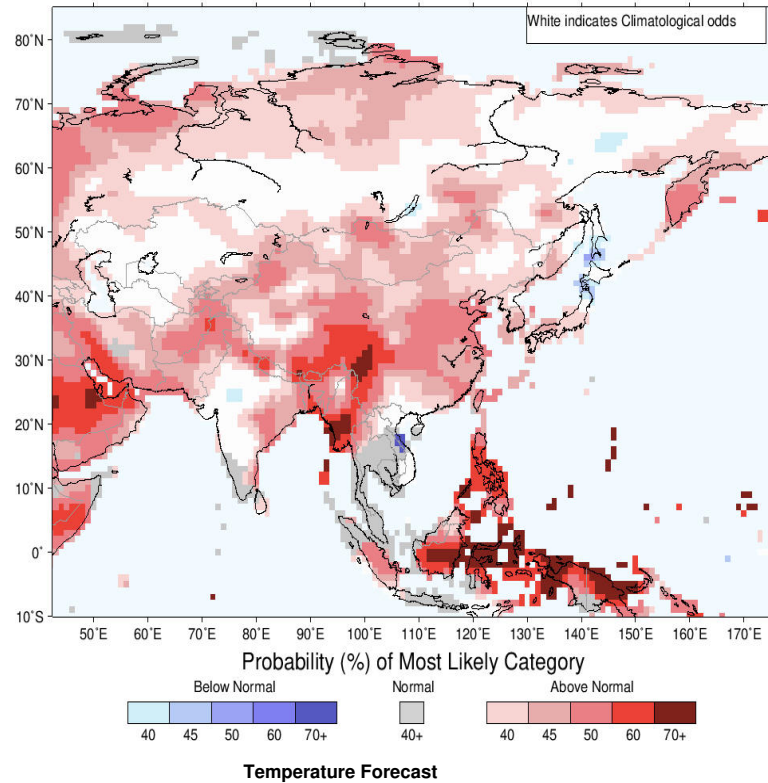
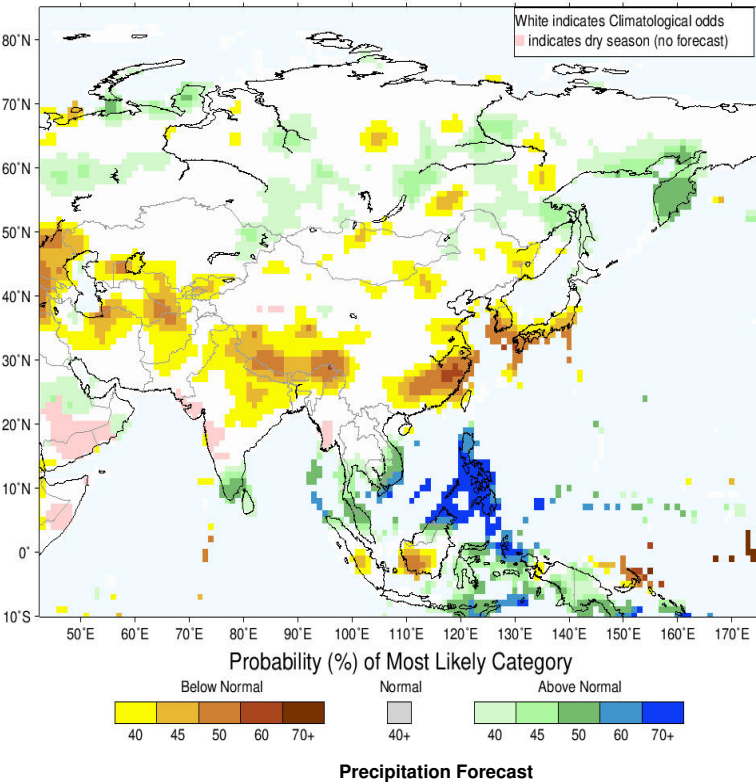


Seasonal Rainfall and Temperature Forecast

Following is the latest seasonal precipitation and temperature prediction for the next 3 months by the IRI. The color shading indicates the probability of the most dominant tercile -- that is, the tercile having the highest forecast probability. The color bar alongside the map defines these dominant tercile probability levels. The upper side of the color bar shows the colors used for increasingly strong probabilities when the dominant tercile is the above-normal tercile, while the lower side shows likewise for the below-normal tercile. The gray color indicates an enhanced probability for the near-normal tercile (nearly always limited to 40%).

IRI Multi-Model Probability Forecast for Precipitation for December-January-February 2022, Issued November 2021

IRI Multi-Model Probability Forecast for Temperature for December-January-February 2022, Issued November 2021



Subscribe to our Monthly Maldives Newsletter

email address

Subscribe

Follow @fectmv

Contact Us
email: fectmv@gmail.com
phone: (+96) 07 788010
blog: www.lectmv.blogspot.com

Foundation for Environment, Climate & Technology,
REM, Madhrasaadhoshuge,
Henveiru, Hadheebee Magu,
Male' 1/2, 20184,
Maldives