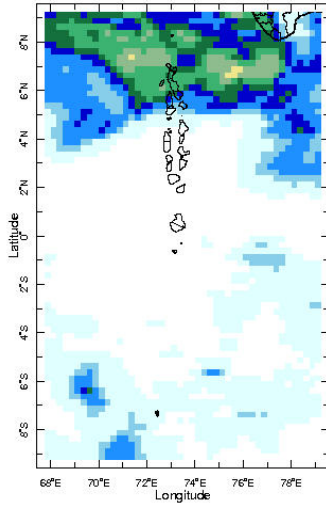


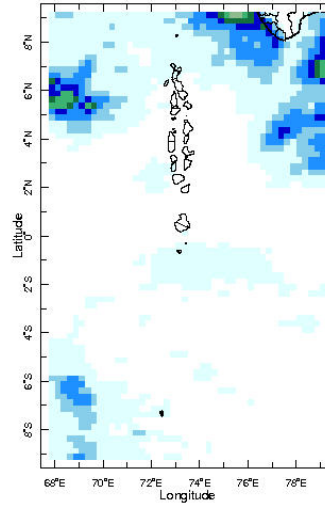

**DOWNLOAD**

## Daily Rainfall Monitoring

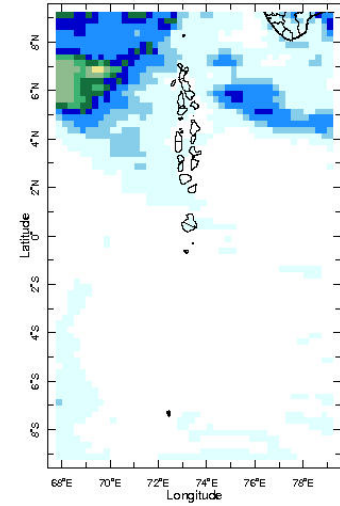
The following figures show the observed rainfall in the last 15 days in Maldives.



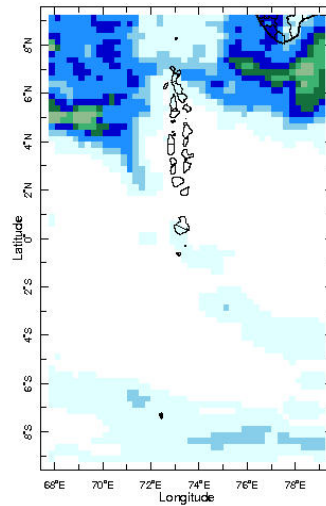
14 Oct 2023



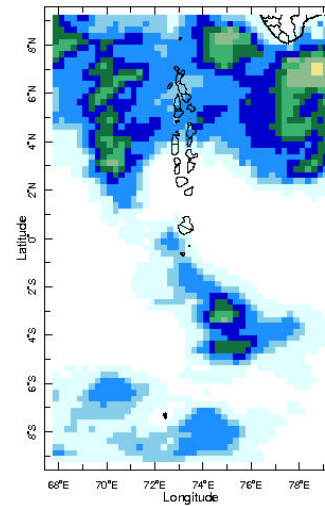
15 Oct 2023



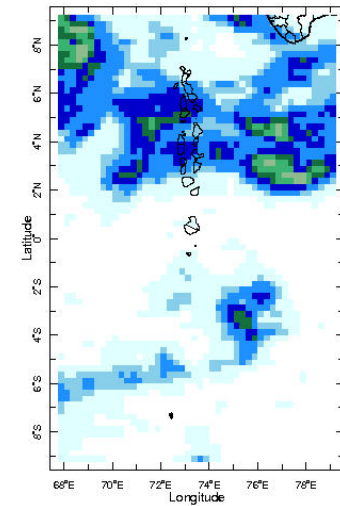
16 Oct 2023



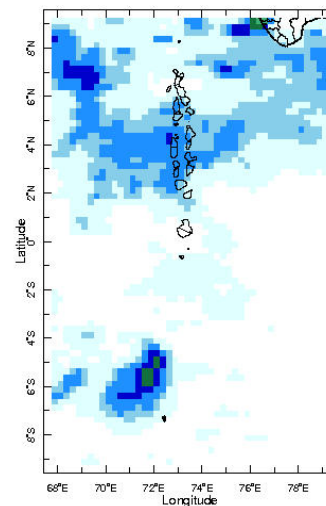
17 Oct 2023



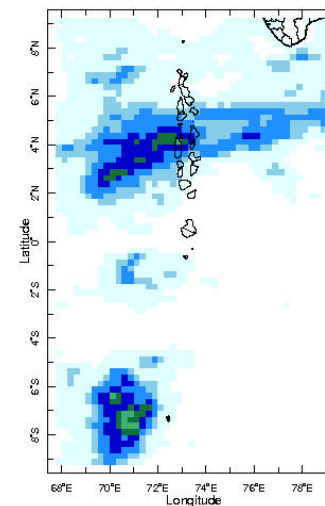
18 Oct 2023



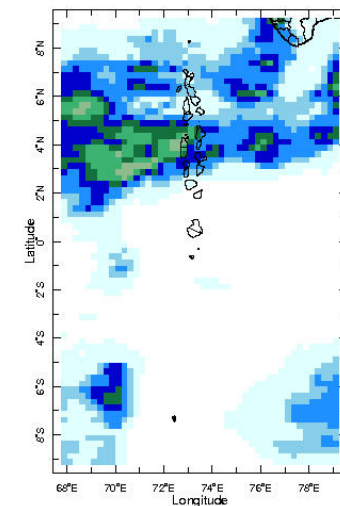
19 Oct 2023



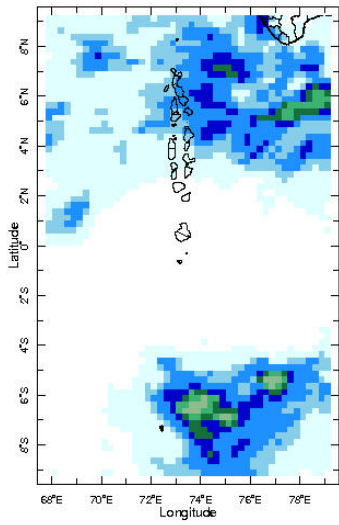
20 Oct 2023



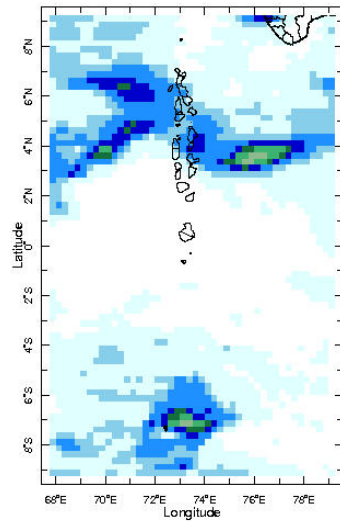
21 Oct 2023



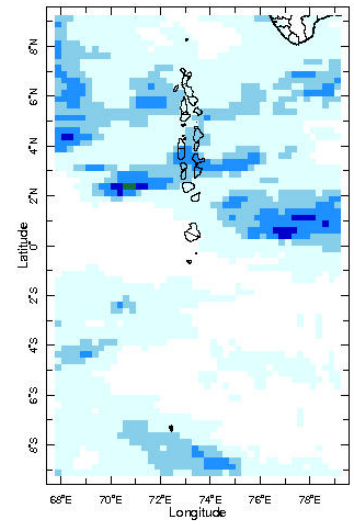
22 Oct 2023



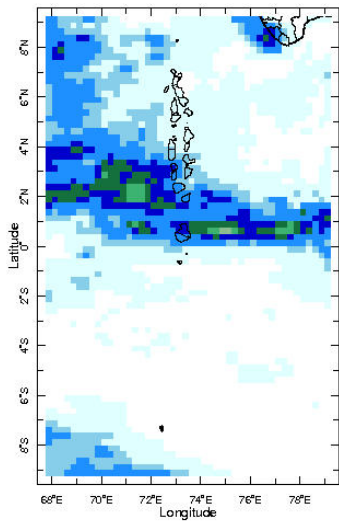
23 Oct 2023



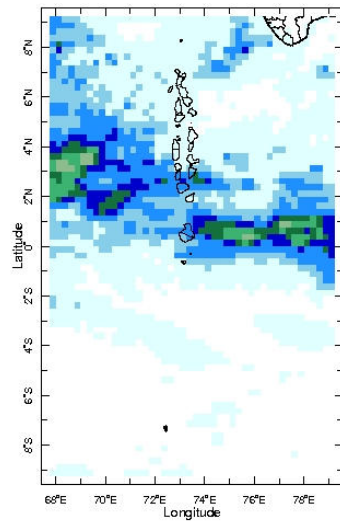
24 Oct 2023



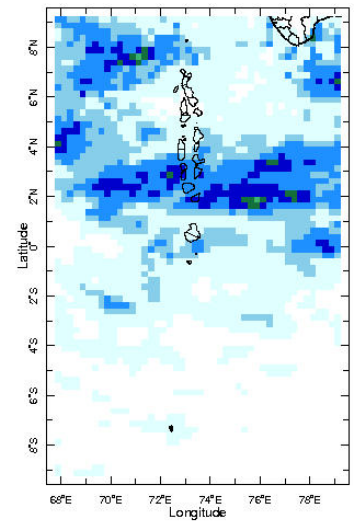
25 Oct 2023



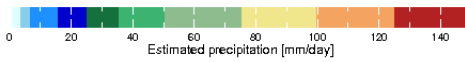
26 Oct 2023



27 Oct 2023

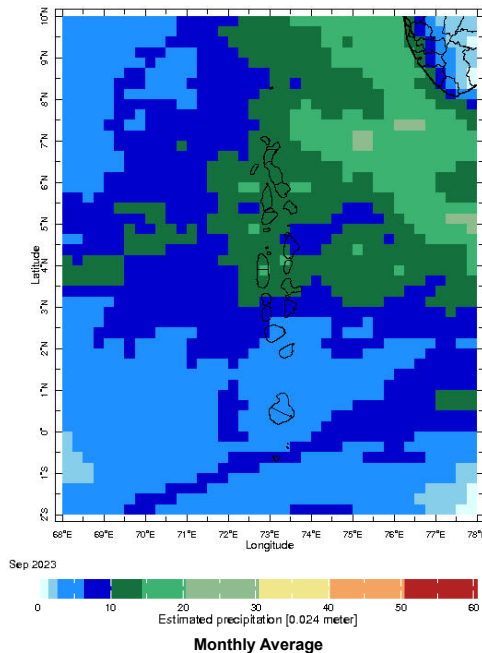


28 Oct 2023



## Monthly Rainfall Monitoring

The figure shows the average observed rainfall in the previous month.

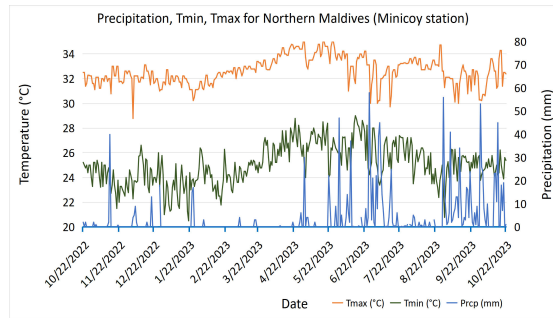


Sep 2023

Monthly Average

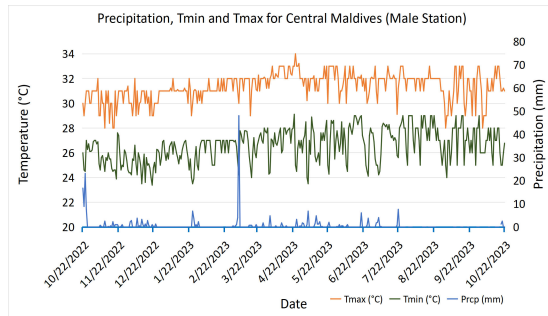
## Monthly and Seasonal Monitoring

### Northern Maldives:



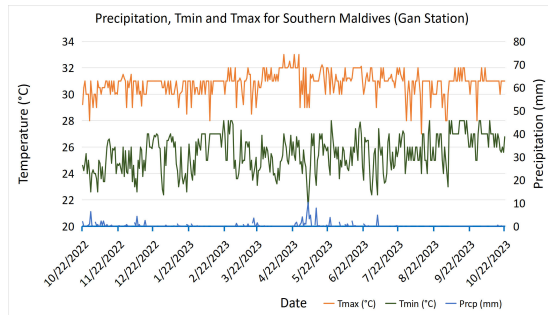
Daily Rainfall, Tmin & Tmax for the previous year in Minicoy station (2022 October to 2023 October)

### Central Maldives:



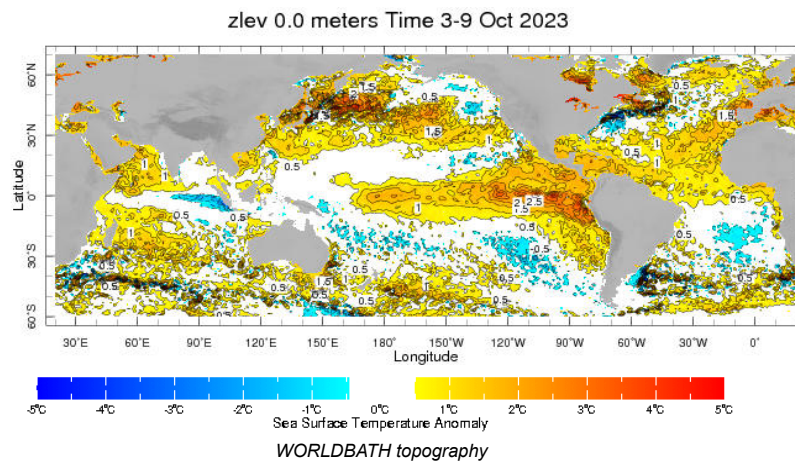
Daily Rainfall, Tmin & Tmax for the previous year in Male station (2022 October to 2023 October)

### Southern Maldives:



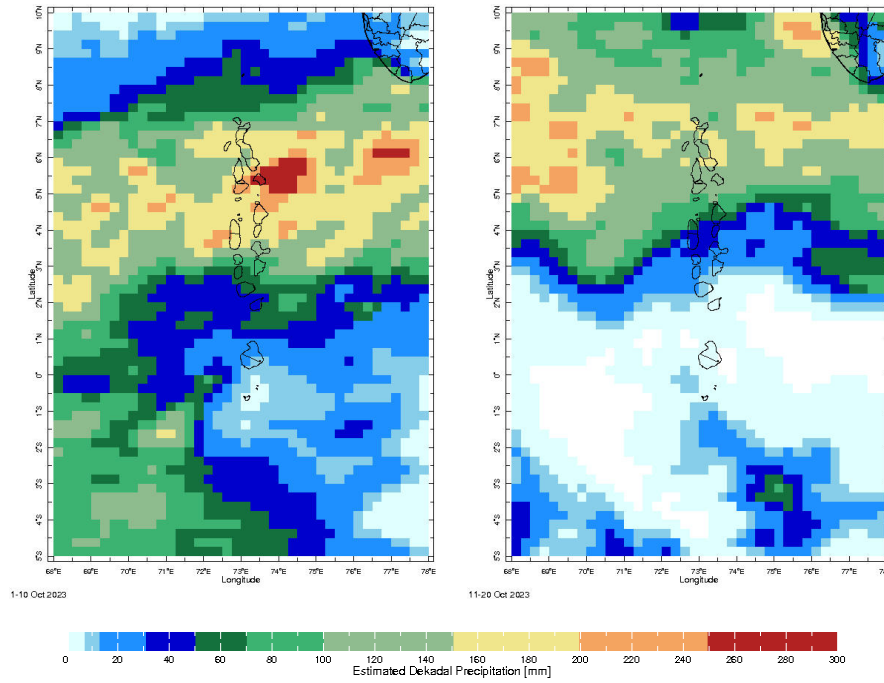
Daily Rainfall, Tmin & Tmax for the previous year in Gan station (2022 October to 2023 October)

## Ocean Surface Monitoring



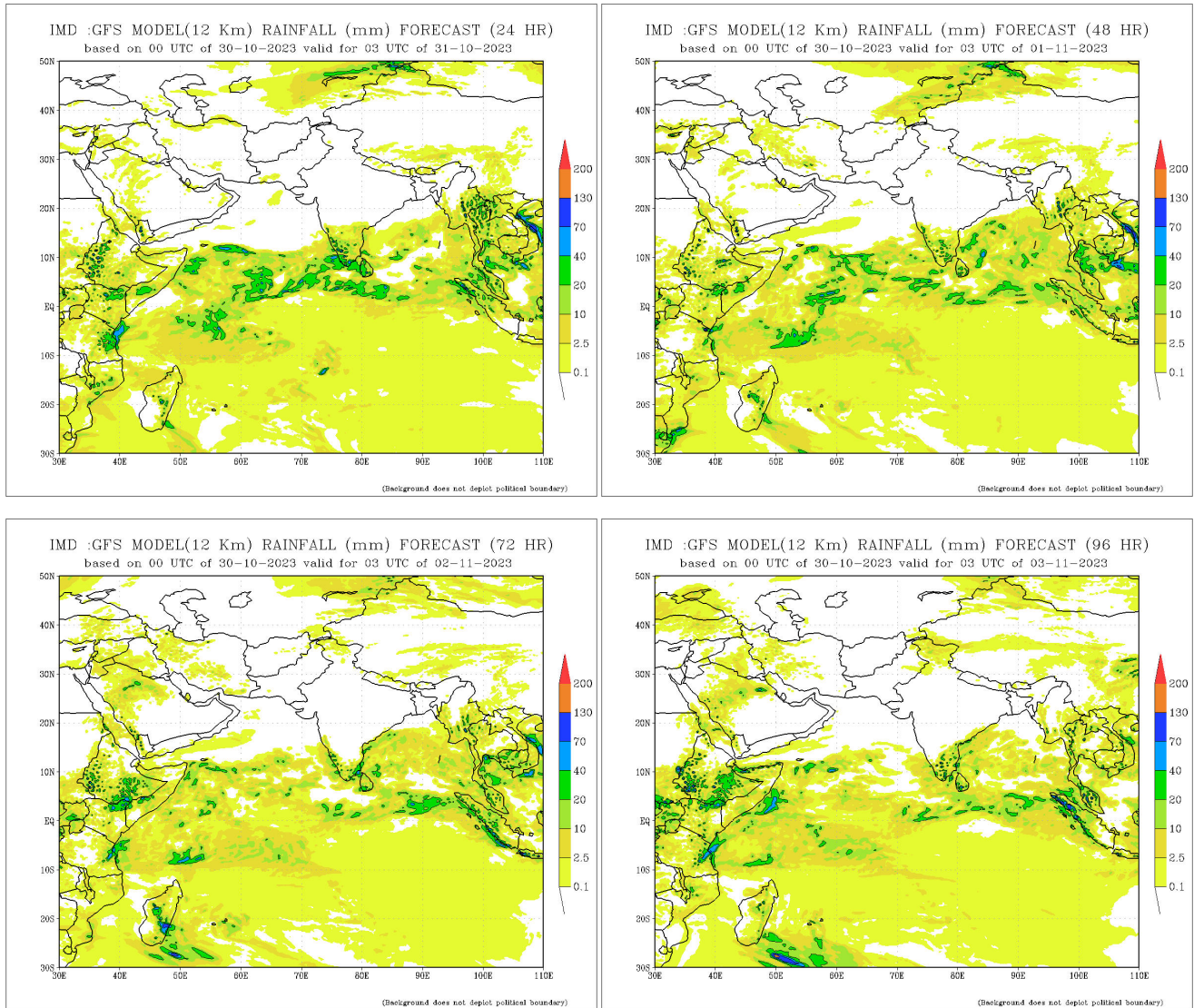


# Dekadal (10 Day) Satellite Derived Rainfall Estimates

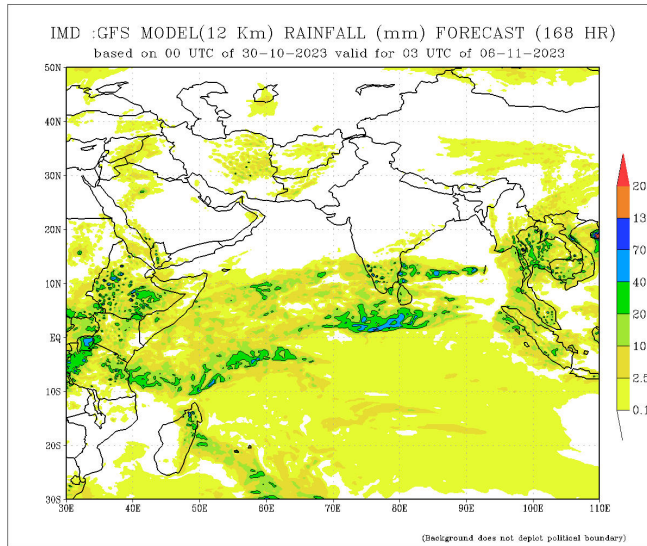
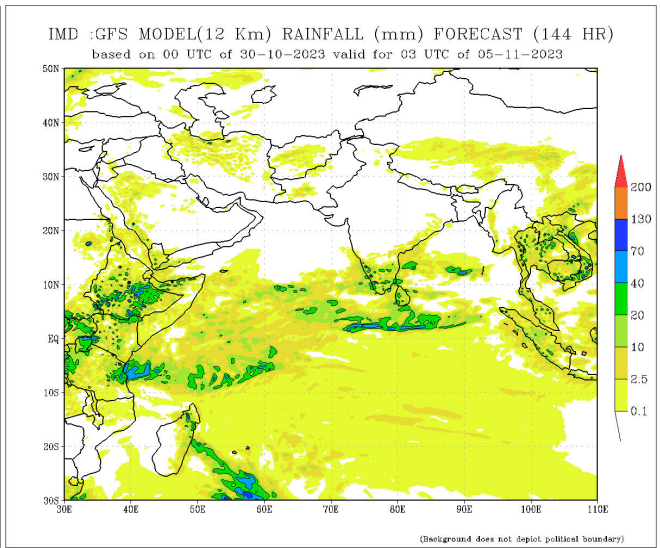
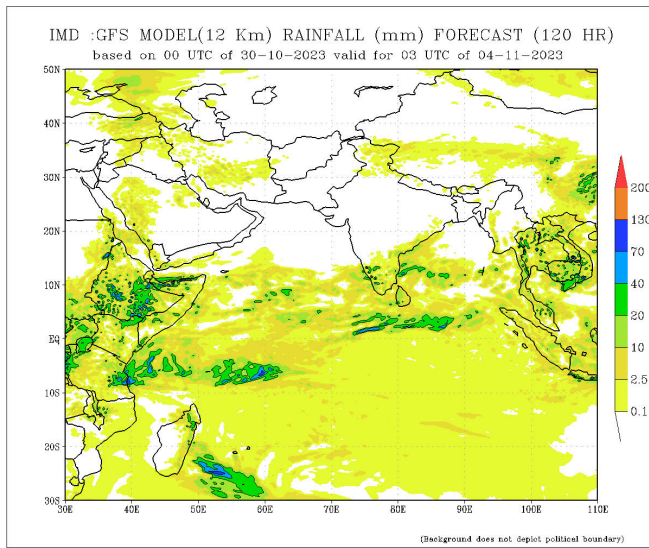


## Daily Rainfall Forecast

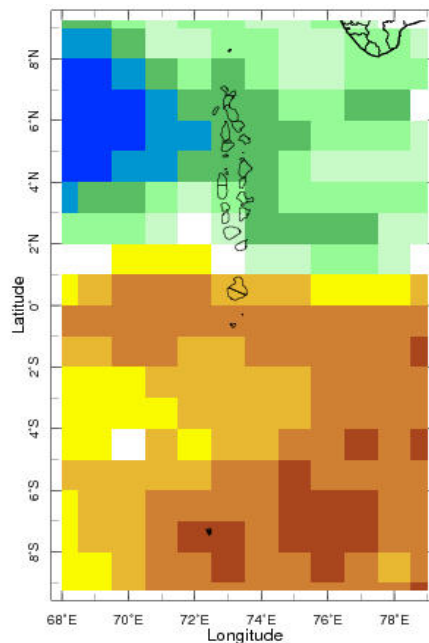
Daily Rainfall forecasts (up to 7 days ahead) from the IMD is provided in figures below. These predictions are from the GFS (T1534) model covering the entire south Asian region.



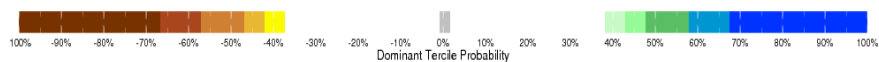




## Bi-weekly Precipitation Forecast



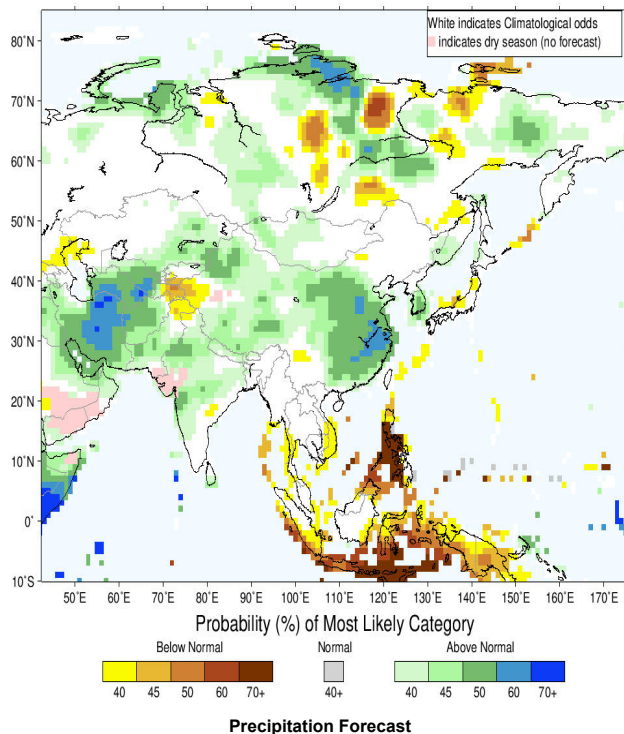
4-17 Nov 2023 IRI SubX Precipitation Forecast issued 0000



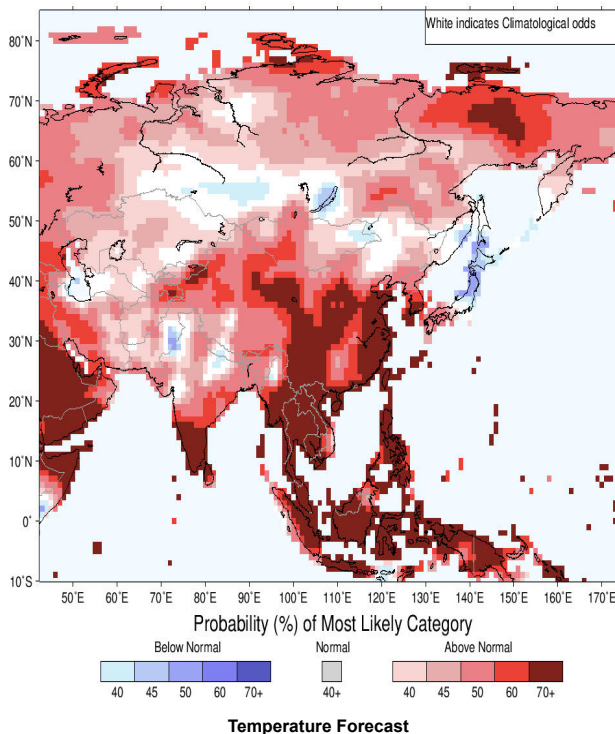
## Seasonal Rainfall and Temperature Forecast

Following is the latest seasonal precipitation and temperature prediction for the next 3 months by the IRI. The color shading indicates the probability of the most dominant tercile -- that is, the tercile having the highest forecast probability. The color bar alongside the map defines these dominant tercile probability levels. The upper side of the color bar shows the colors used for increasingly strong probabilities when the dominant tercile is the above-normal tercile, while the lower side shows likewise for the below-normal tercile. The gray color indicates an enhanced probability for the near-normal tercile (nearly always limited to 40%).

IRI Multi-Model Probability Forecast for Precipitation for November-December-January 2024, Issued October 2023



IRI Multi-Model Probability Forecast for Temperature for November-December-January 2024, Issued October 2023



Subscribe to our Monthly Maldives Newsletter

email address

Subscribe

Follow @fectmv

Contact Us  
email: [fectmv@gmail.com](mailto:fectmv@gmail.com)  
phone: (+96) 07 788010  
blog: [www.lectmv.blogspot.com](http://www.lectmv.blogspot.com)

Foundation for Environment, Climate & Technology,  
REM, Madhrasaadhoshuge,  
Henveiru, Hadheebee Magu,  
Male', 20184,  
Maldives