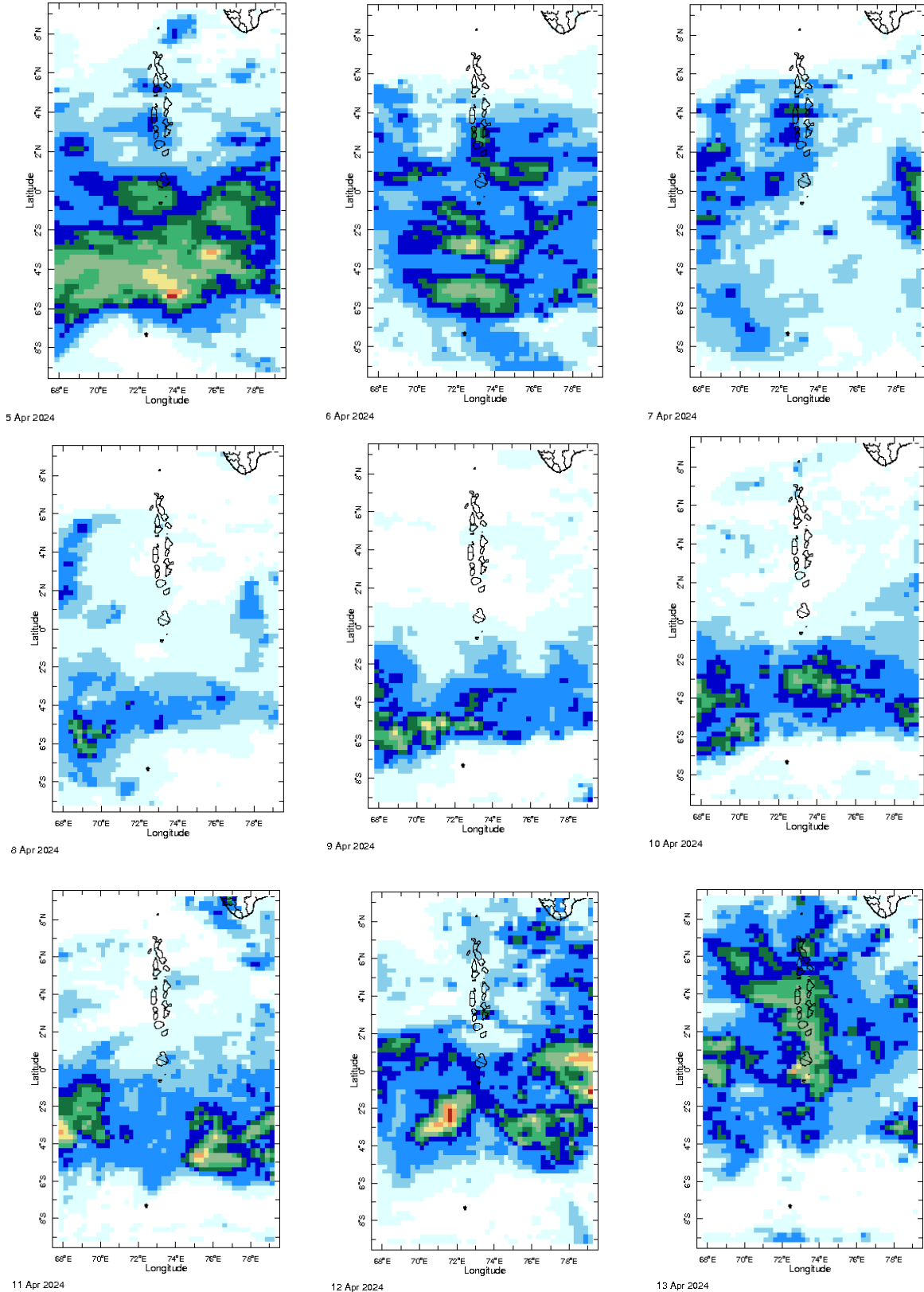
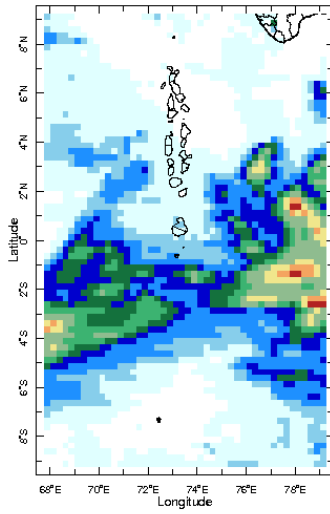




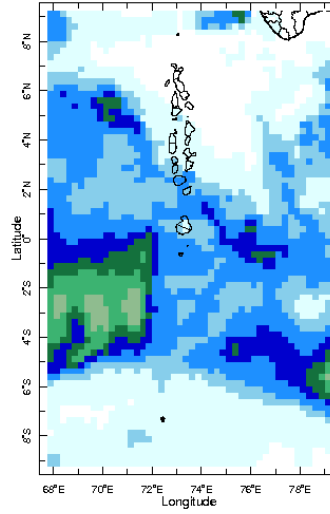
### Daily Rainfall Monitoring

The following figures show the observed rainfall in the last 15 days in Maldives.

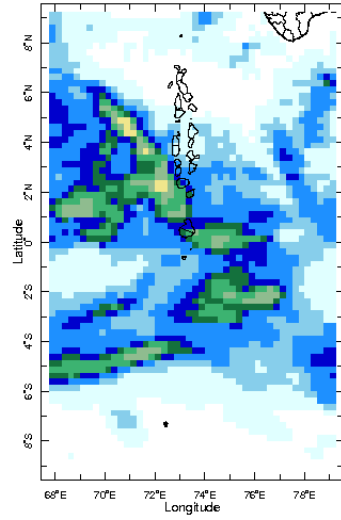




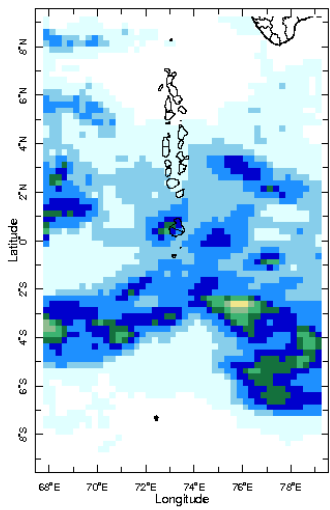
22 Apr 2024



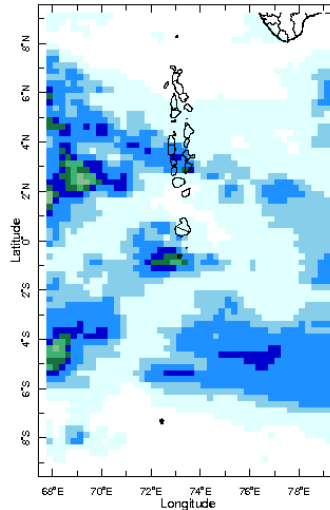
23 Apr 2024



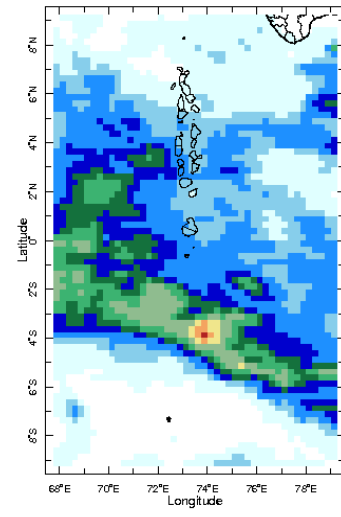
24 Apr 2024



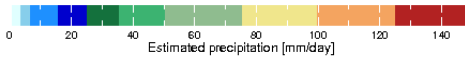
25 Apr 2024



26 Apr 2024

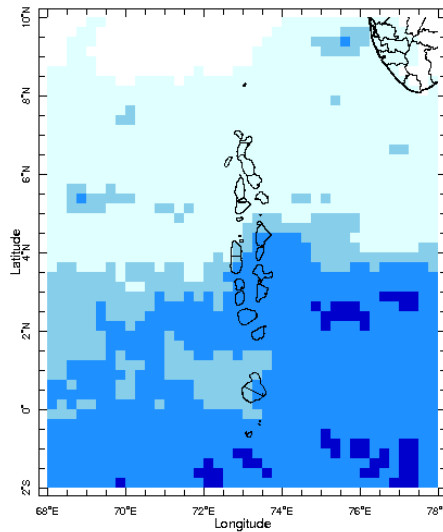


27 Apr 2024

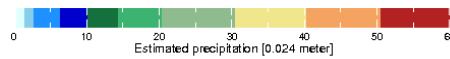


## Monthly Rainfall Monitoring

The figure shows the average observed rainfall in the previous month.



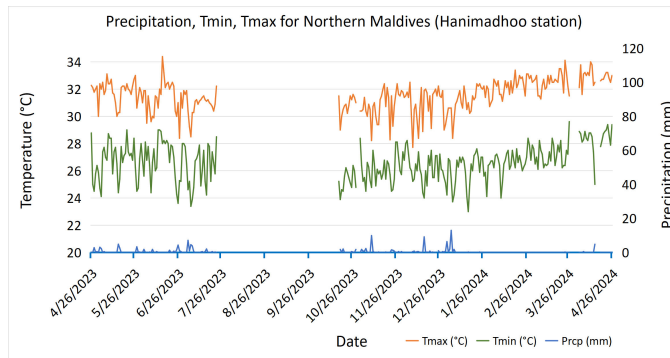
Mar 2024



Monthly Average

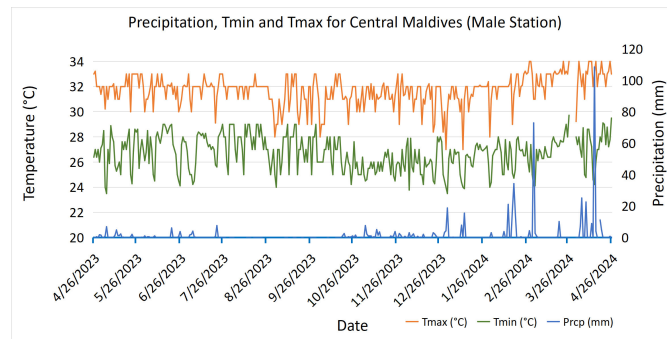
## Monthly and Seasonal Monitoring

### Northern Maldives:



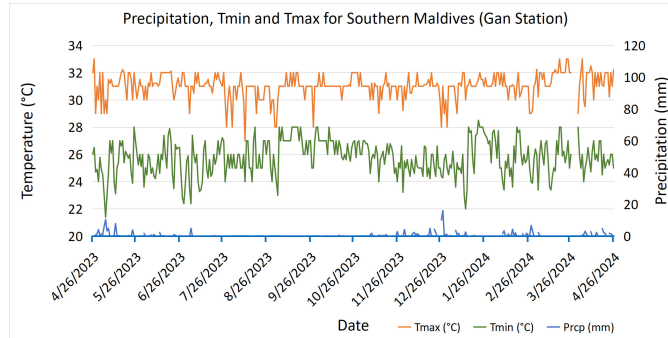
Daily Rainfall, Tmin & Tmax for the previous year in Hanimadhoo station (2023 April to 2024 April)

### Central Maldives:



Daily Rainfall, Tmin & Tmax for the previous year in Male station (2023 April to 2024 April)

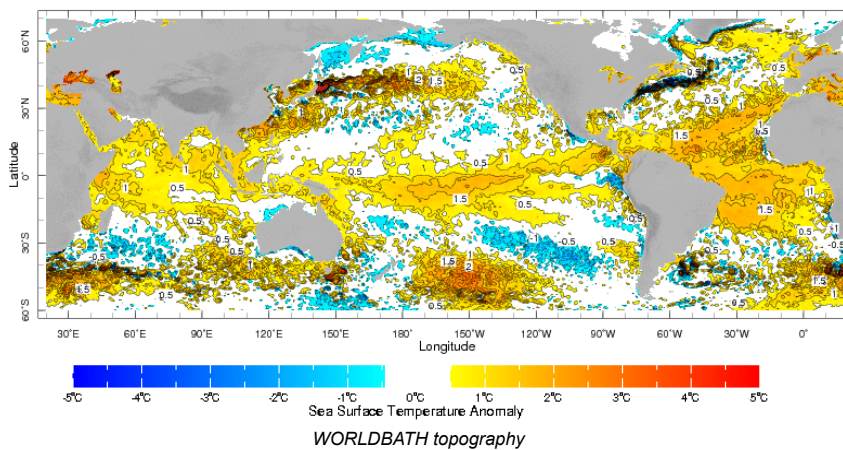
### Southern Maldives:



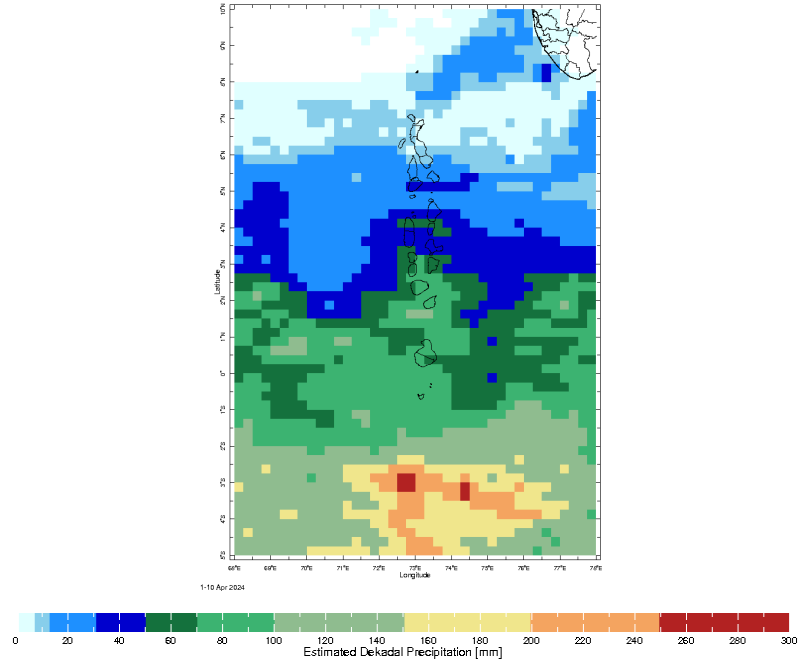
Daily Rainfall, Tmin & Tmax for the previous year in Gan station (2023 April to 2024 April)

## Ocean Surface Monitoring

zlev 0.0 meters Time 2-8 Apr 2024

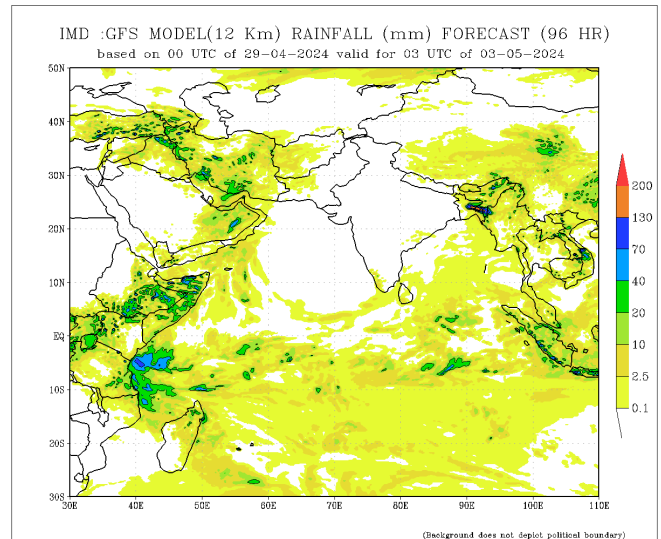
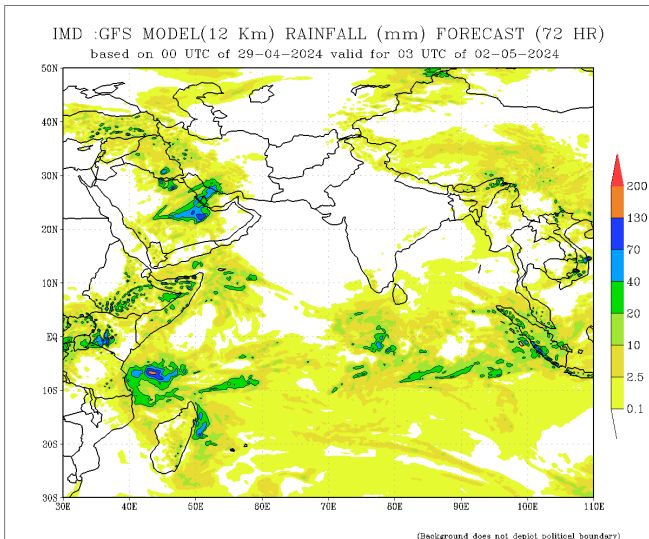
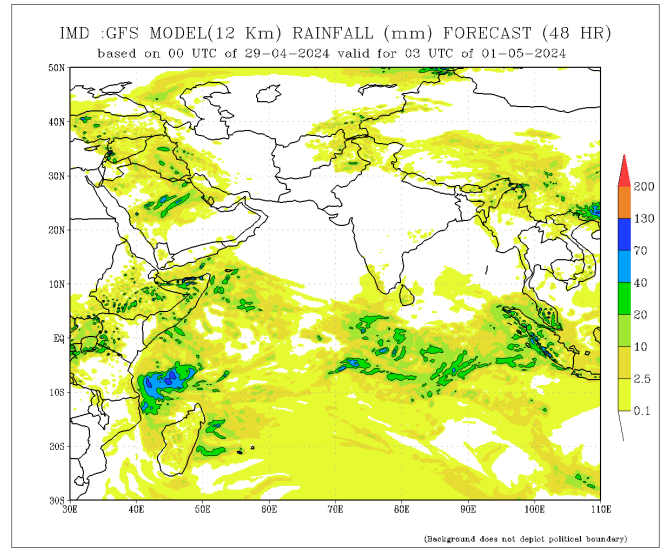
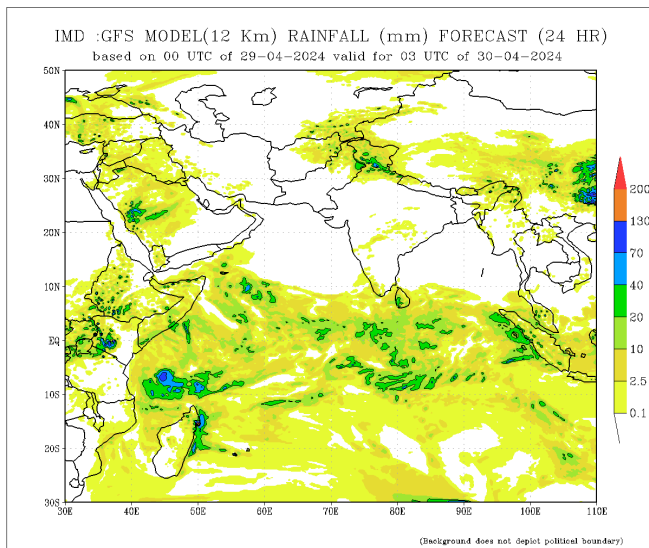


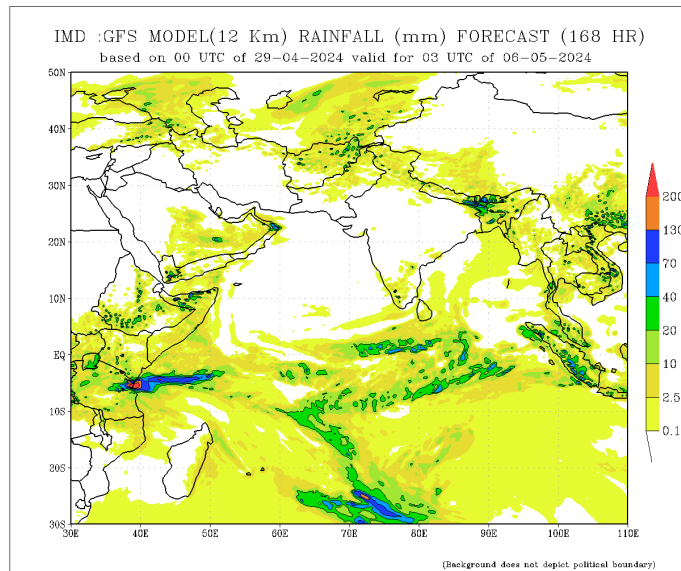
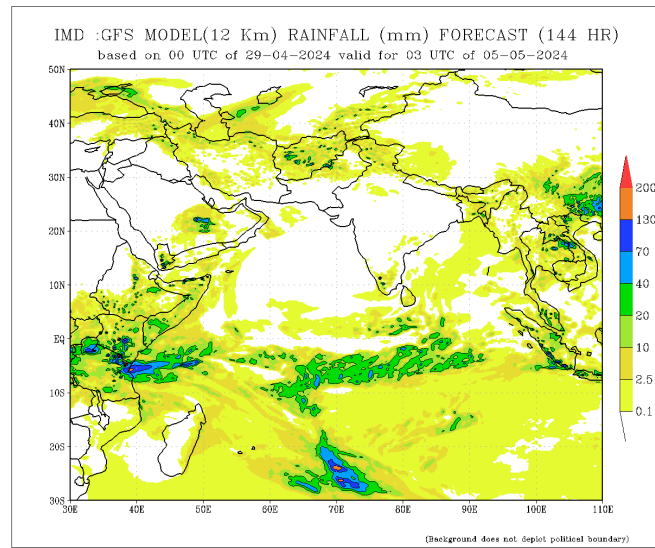
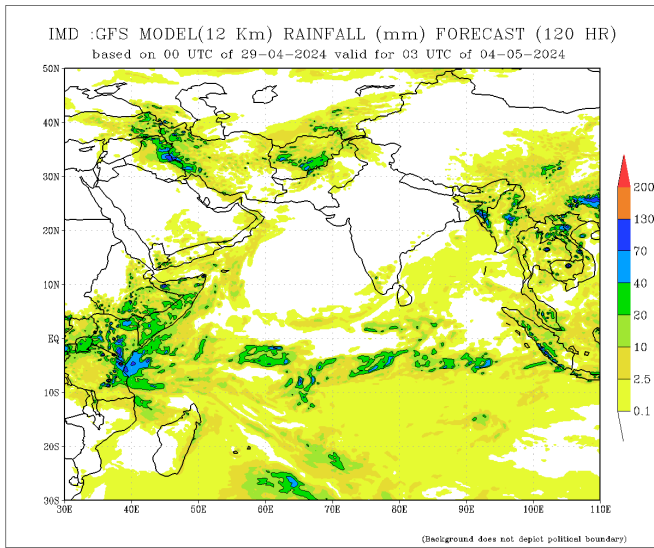
# Dekadal (10 Day) Satellite Derived Rainfall Estimates



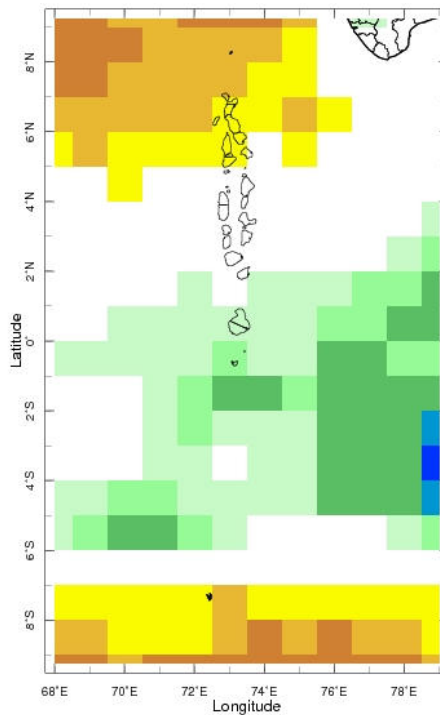
## Daily Rainfall Forecast

Daily Rainfall forecasts (up to 7 days ahead) from the IMD is provided in figures below. These predictions are from the GFS (T1534) model covering the entire south Asian region.

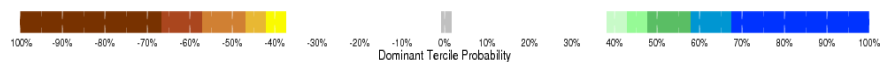




**Bi-weekly Precipitation Forecast**

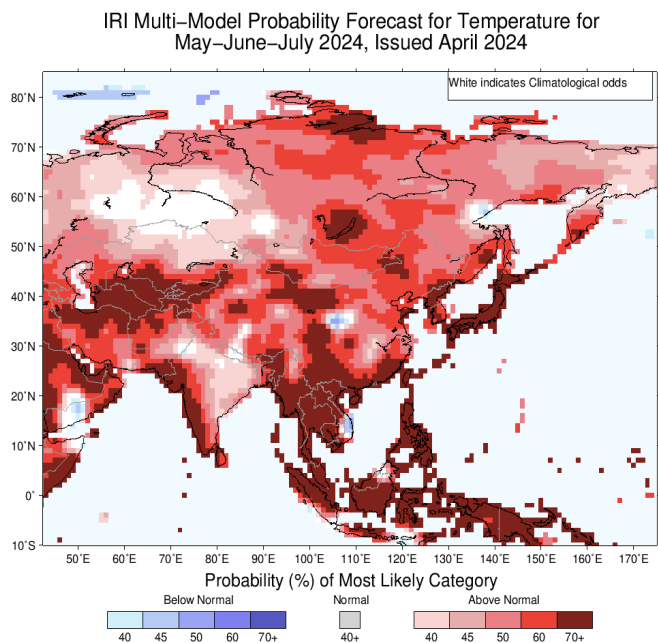


4-17 May 2024 IRI SubX Precipitation Forecast issued 0000 26 Apr 2

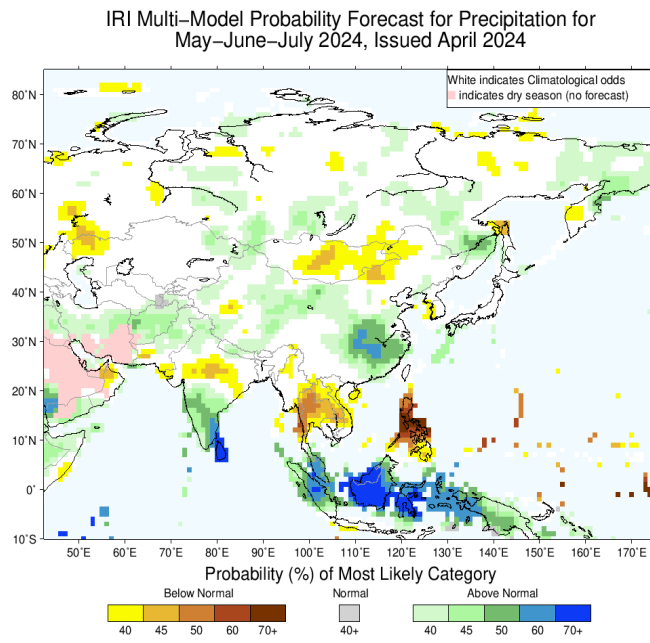


## Seasonal Rainfall and Temperature Forecast

Following is the latest seasonal precipitation and temperature prediction for the next 3 months by the IRI. The color shading indicates the probability of the most dominant tercile -- that is, the tercile having the highest forecast probability. The color bar alongside the map defines these dominant tercile probability levels. The upper side of the color bar shows the colors used for increasingly strong probabilities when the dominant tercile is the above-normal tercile, while the lower side shows likewise for the below-normal tercile. The gray color indicates an enhanced probability for the near-normal tercile (nearly always limited to 40%).



Precipitation Forecast



Temperature Forecast

Subscribe to our Monthly Maldives Newsletter

email address

Subscribe

Follow @fectmv

Contact Us  
 email: [fectmv@gmail.com](mailto:fectmv@gmail.com)  
 phone: (+96) 07 788010  
 blog: [www.lectmv.blogspot.com](http://www.lectmv.blogspot.com)

Foundation for Environment, Climate & Technology,  
 REM, Madhrasaadhoshuge,  
 Henveiru, Hadheebee Magu,  
 Male', 20184,  
 Maldives