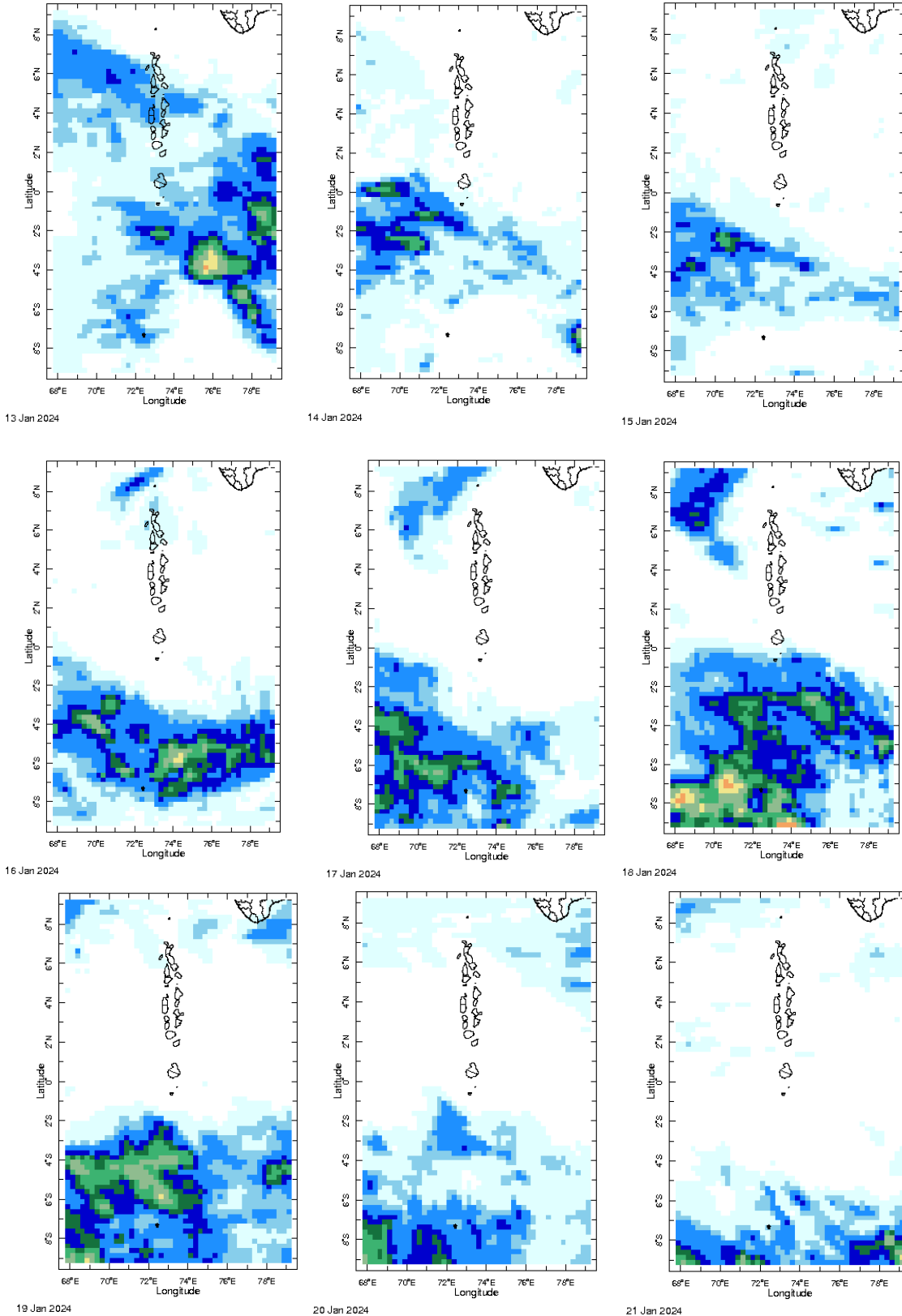
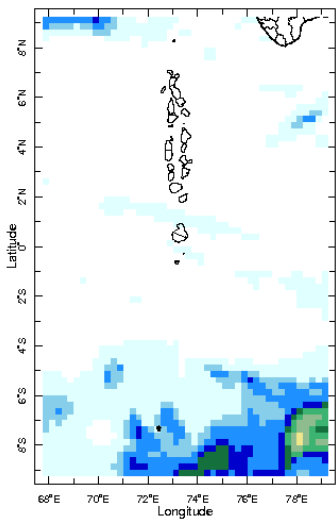




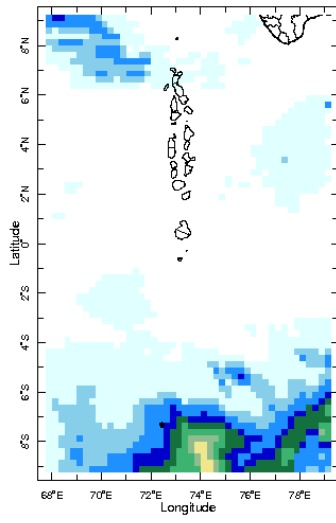
**Daily Rainfall Monitoring**

The following figures show the observed rainfall in the last 15 days in Maldives.

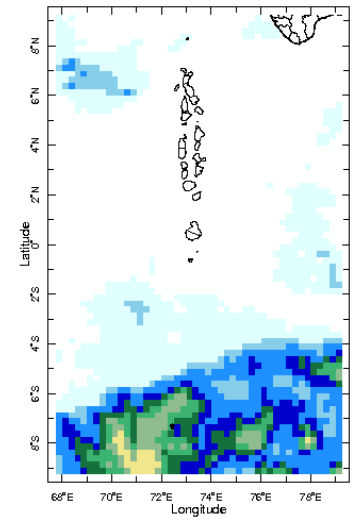




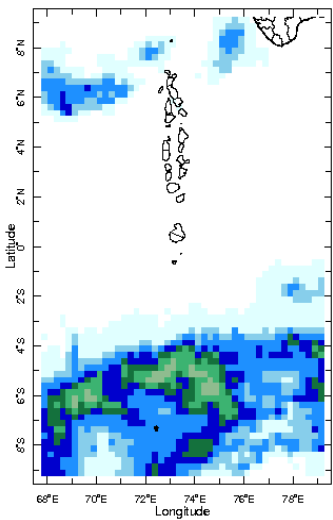
22 Jan 2024



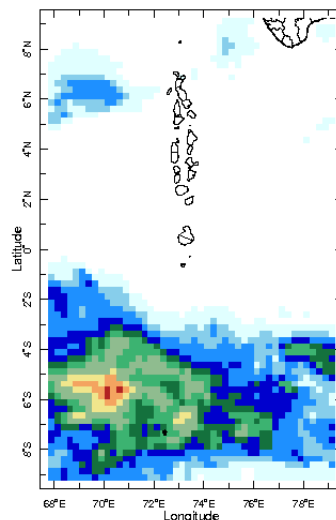
23 Jan 2024



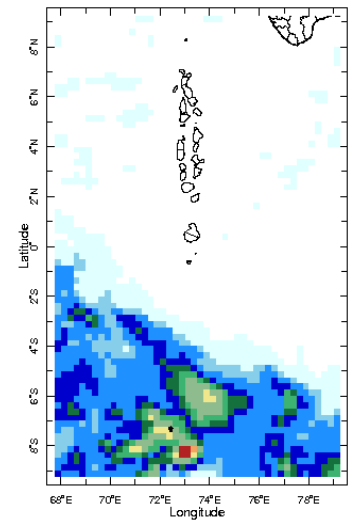
24 Jan 2024



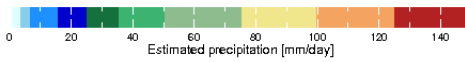
25 Jan 2024



26 Jan 2024

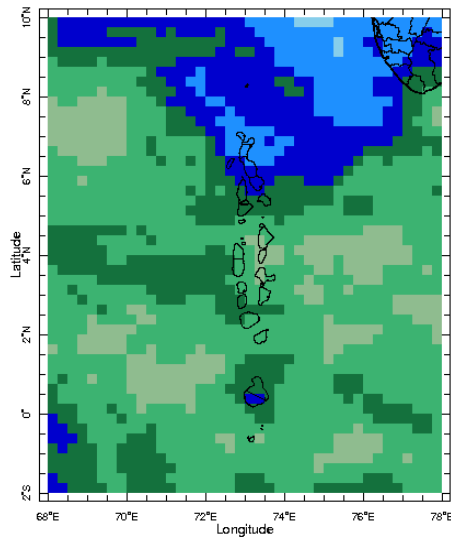


27 Jan 2024

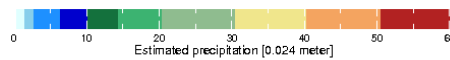


## Monthly Rainfall Monitoring

The figure shows the average observed rainfall in the previous month.



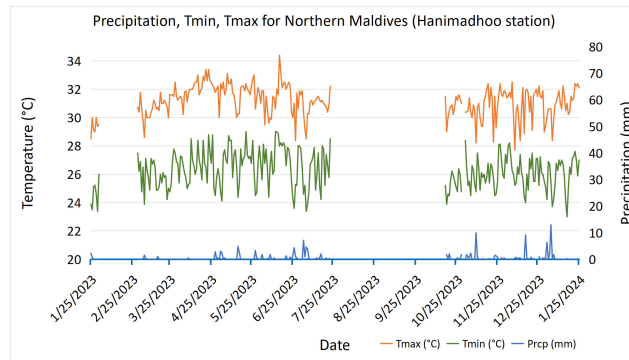
Dec 2023



Monthly Average

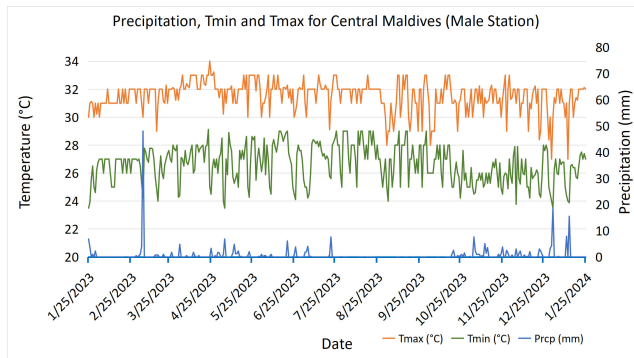
## Monthly and Seasonal Monitoring

### Northern Maldives:



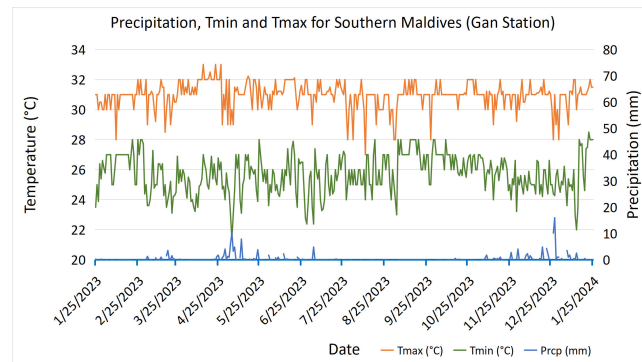
Daily Rainfall, Tmin & Tmax for the previous year in Hanimadhoo station (2023 January to 2024 January)

### Central Maldives:



Daily Rainfall, Tmin & Tmax for the previous year in Male station (2023 January to 2024 January)

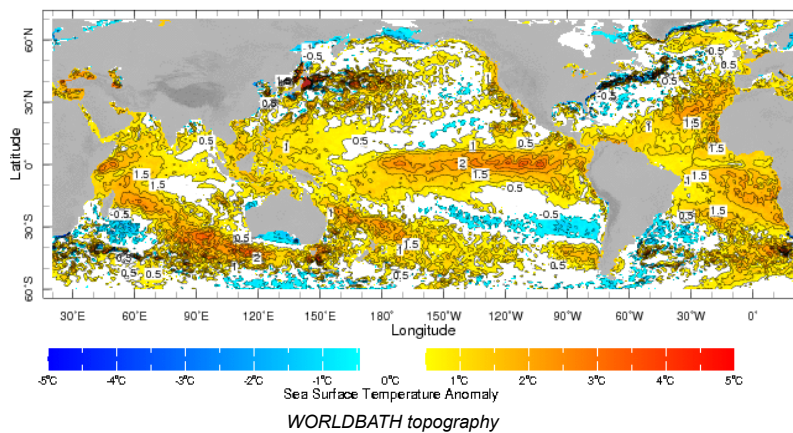
### Southern Maldives:



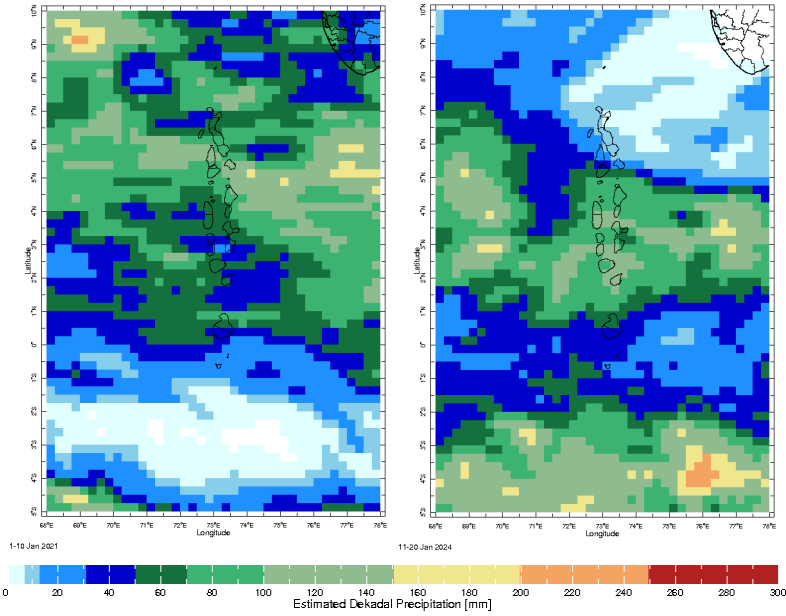
Daily Rainfall, Tmin & Tmax for the previous year in Gan station (2023 January to 2024 January)

## Ocean Surface Monitoring

zlev 0.0 meters Time 2-8 Jan 2024

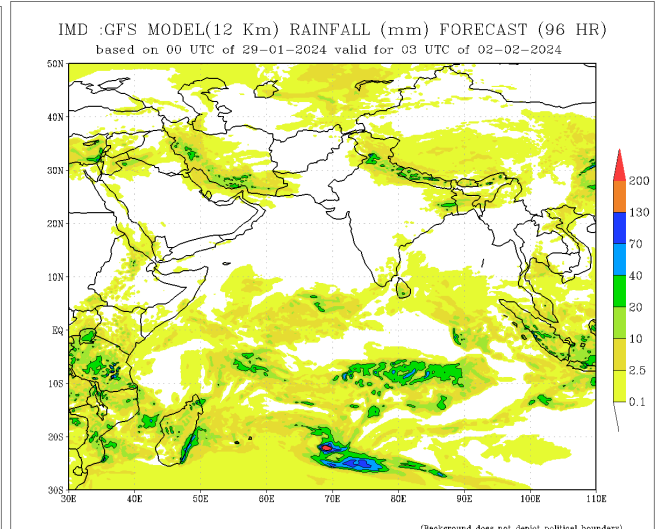
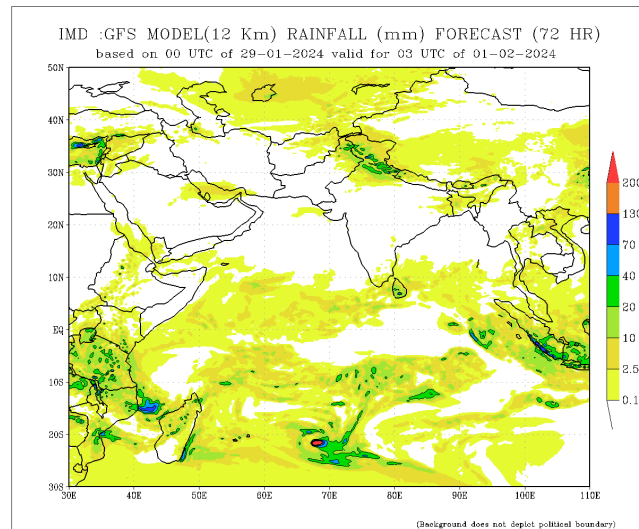
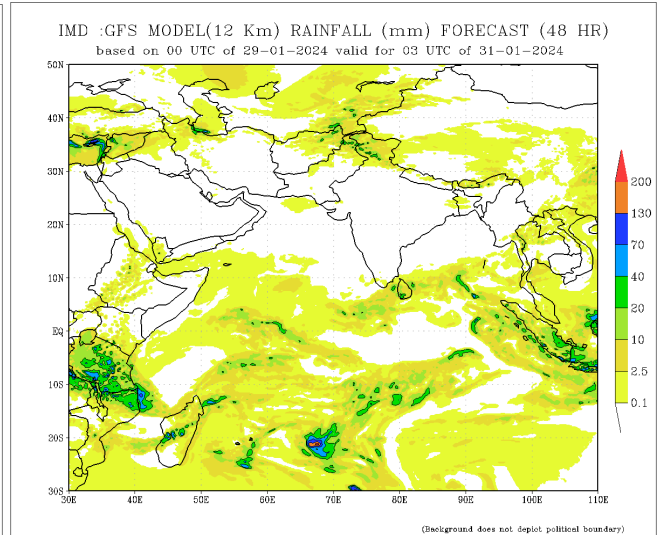
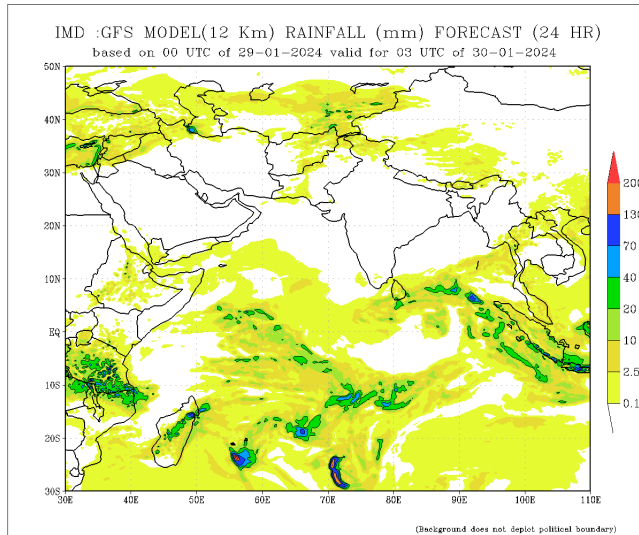


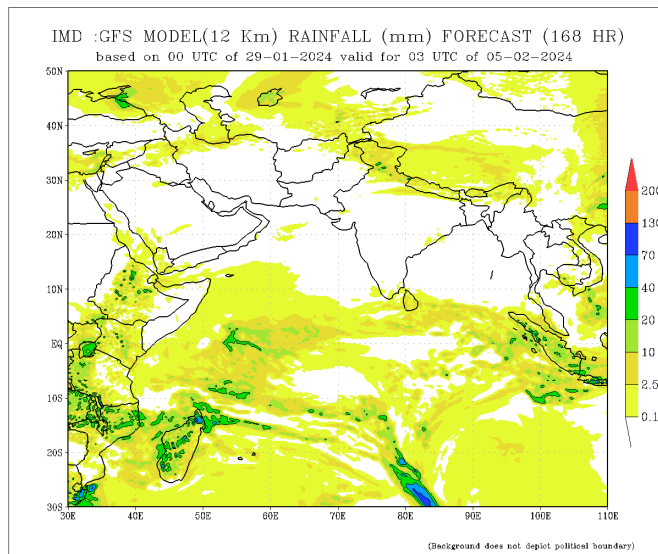
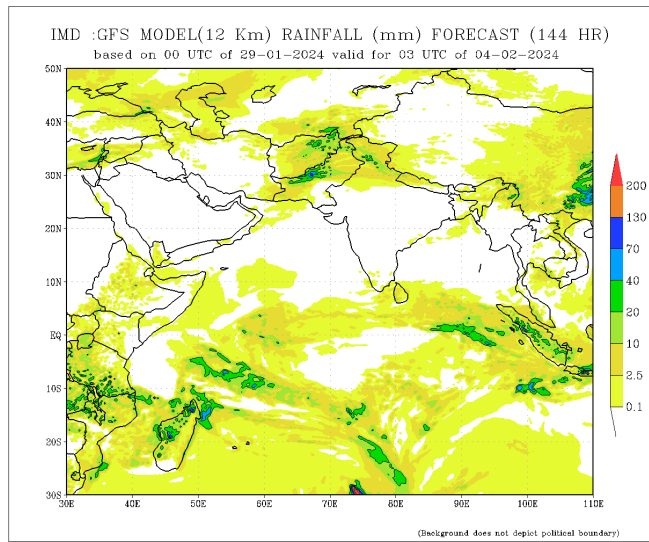
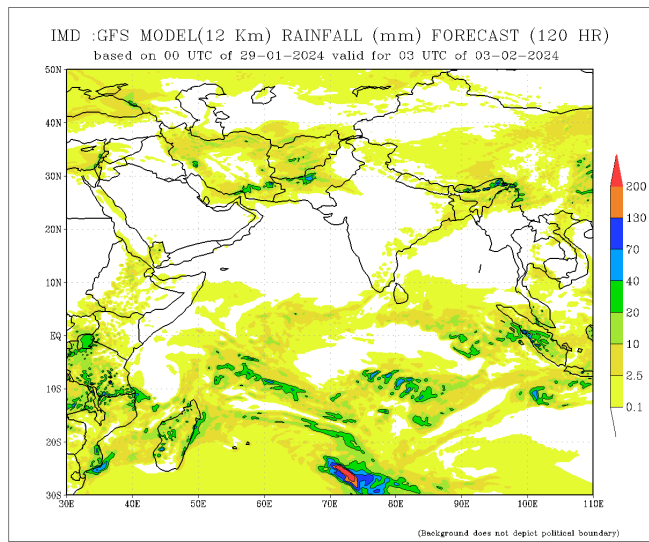
# Dekadal (10 Day) Satellite Derived Rainfall Estimates



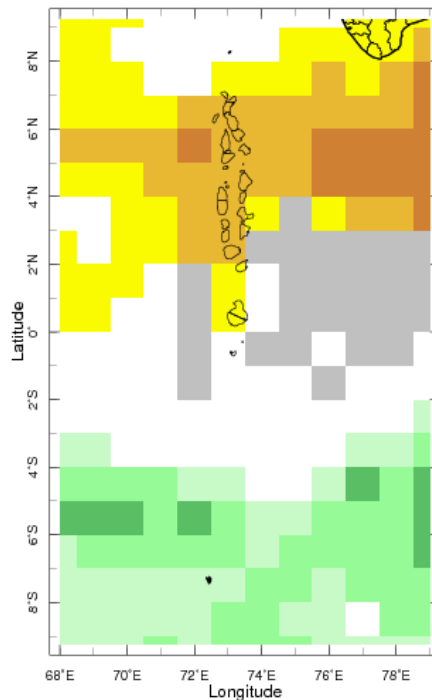
## Daily Rainfall Forecast

Daily Rainfall forecasts (up to 7 days ahead) from the IMD is provided in figures below. These predictions are from the GFS (T1534) model covering the entire south Asian region.

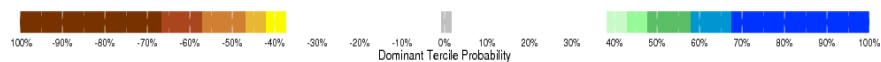




### Bi-weekly Precipitation Forecast



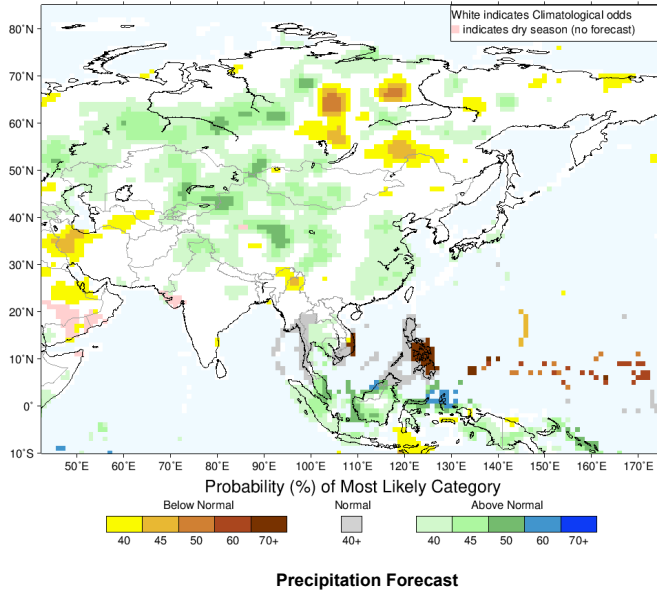
3-16 Feb 2024 IRI SubX Precipitation Forecast issued 0000 2E



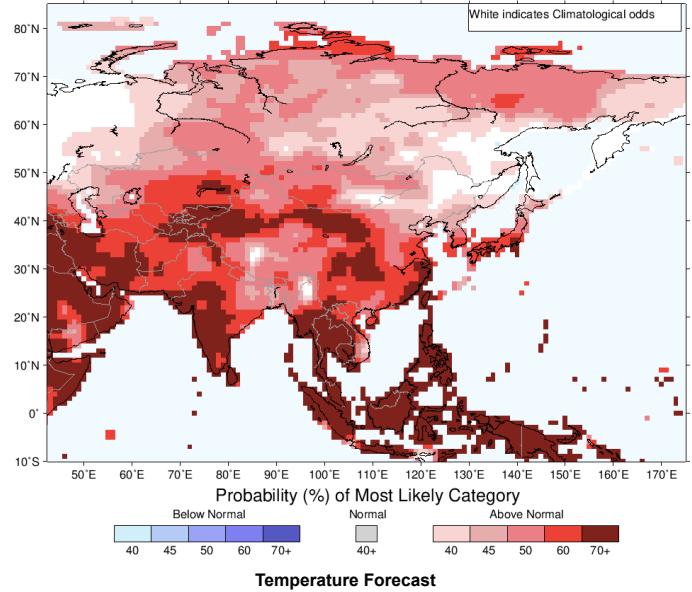
## Seasonal Rainfall and Temperature Forecast

Following is the latest seasonal precipitation and temperature prediction for the next 3 months by the IRI. The color shading indicates the probability of the most dominant tercile -- that is, the tercile having the highest forecast probability. The color bar alongside the map defines these dominant tercile probability levels. The upper side of the color bar shows the colors used for increasingly strong probabilities when the dominant tercile is the above-normal tercile, while the lower side shows likewise for the below-normal tercile. The gray color indicates an enhanced probability for the near-normal tercile (nearly always limited to 40%).

IRI Multi-Model Probability Forecast for Precipitation for February-March-April 2024, Issued January 2024



IRI Multi-Model Probability Forecast for Temperature for February-March-April 2024, Issued January 2024



Subscribe to our Monthly Maldives Newsletter

email address

Subscribe

Follow @fectmv

Contact Us

email: [fectmv@gmail.com](mailto:fectmv@gmail.com)

phone: (+96) 07 788010

blog: [www.lectmv.blogspot.com](http://www.lectmv.blogspot.com)

Foundation for Environment, Climate & Technology,  
REM, Madhrasaadhoshuge,  
Henveiru, Hadheebee Magu,  
Male', 20184,  
Maldives