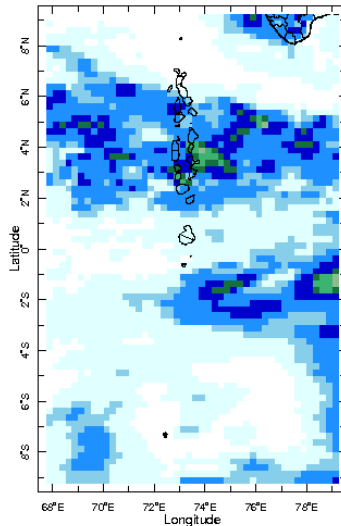


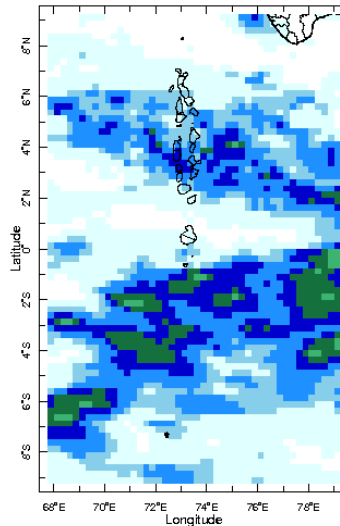


Daily Rainfall Monitoring

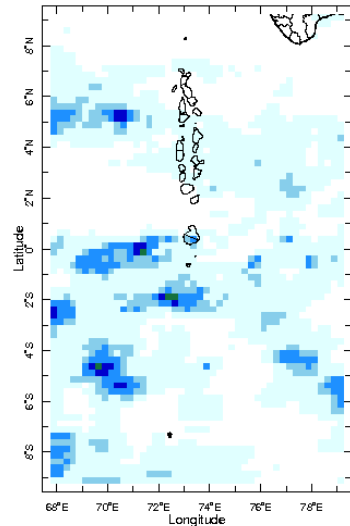
The following figures show the observed rainfall in the last 15 days in Maldives.



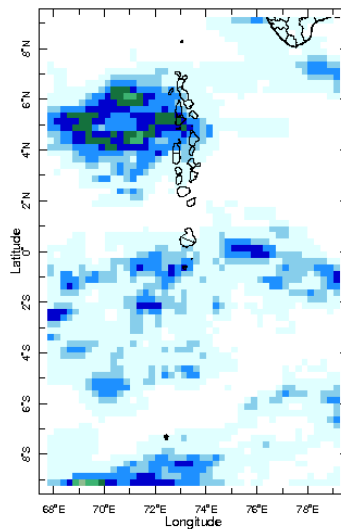
11 Dec 2022



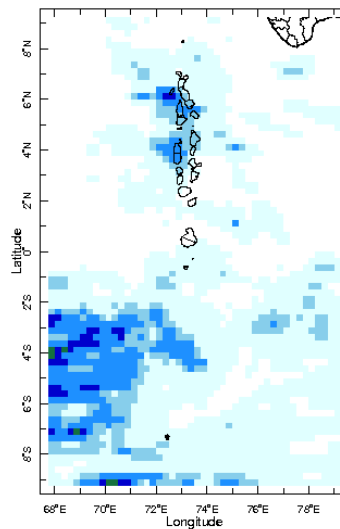
12 Dec 2022



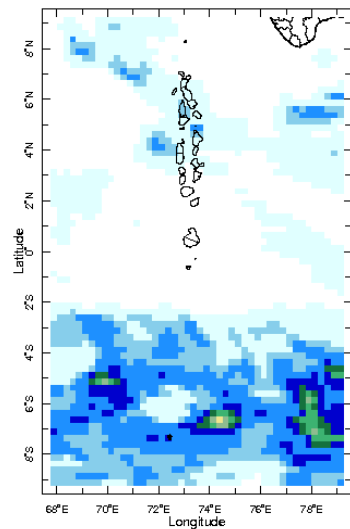
13 Dec 2022



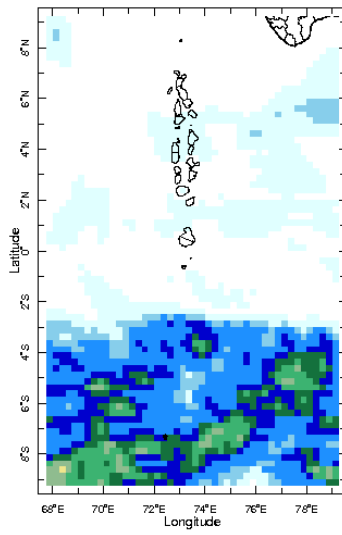
14 Dec 2022



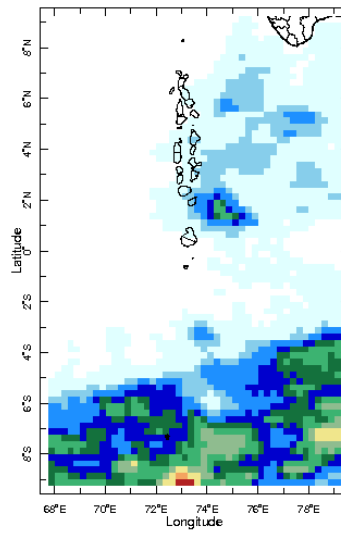
15 Dec 2022



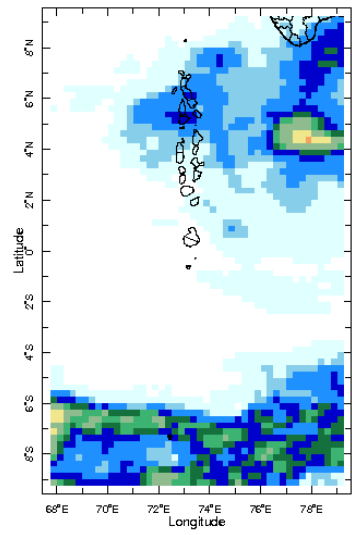
16 Dec 2022



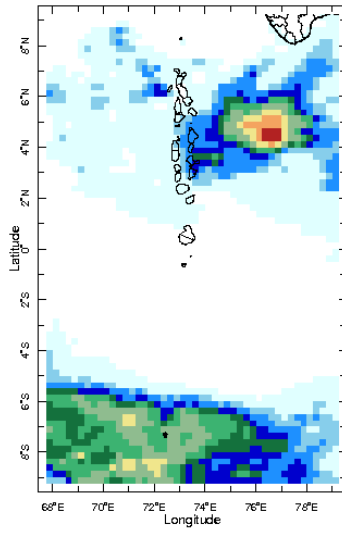
17 Dec 2022



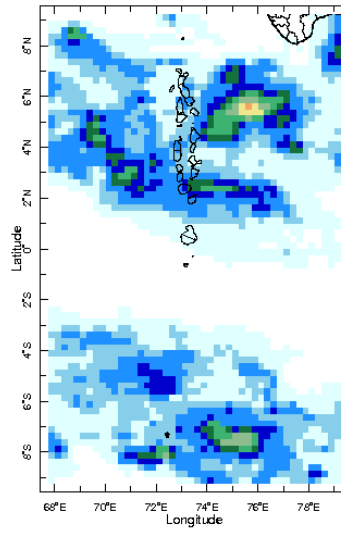
18 Dec 2022



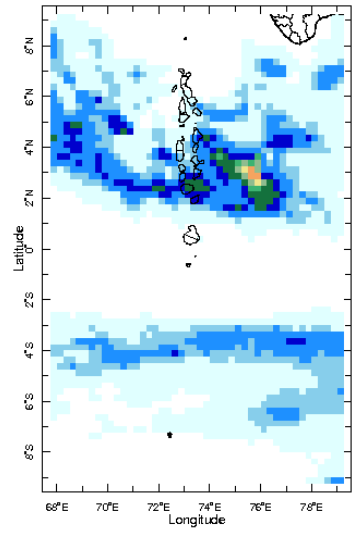
19 Dec 2022



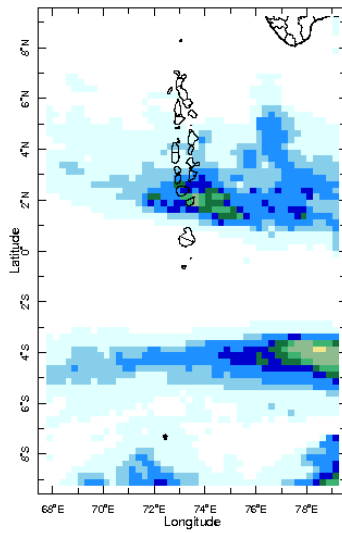
20 Dec 2022



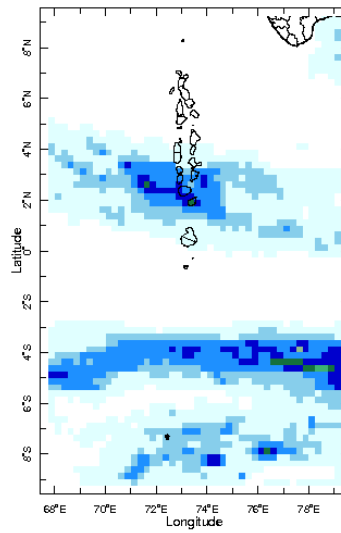
21 Dec 2022



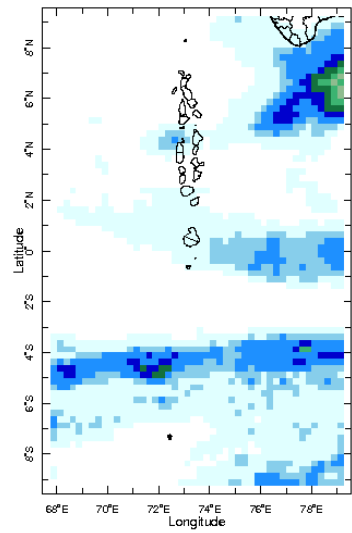
22 Dec 2022



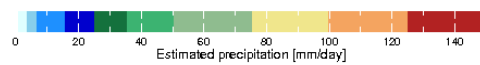
23 Dec 2022



24 Dec 2022

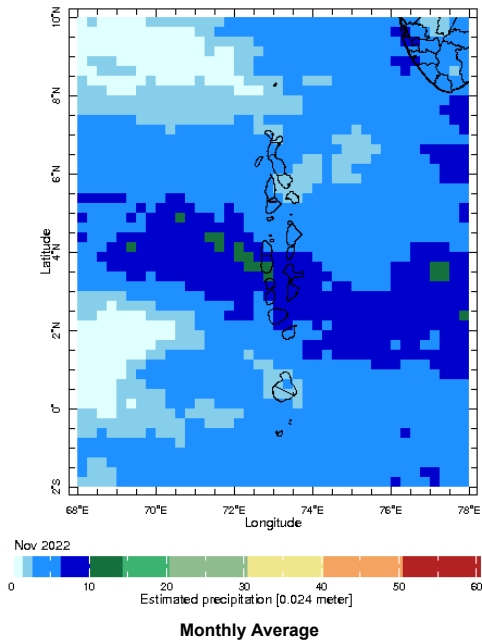


25 Dec 2022



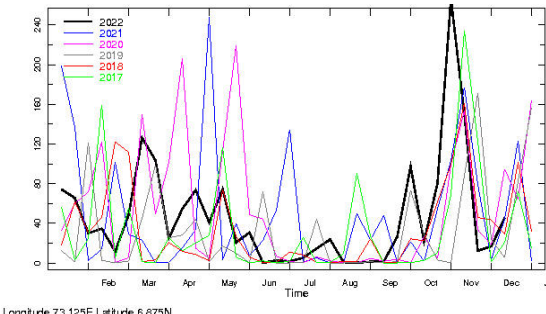
Monthly Rainfall Monitoring

The figure shows the average observed rainfall in the previous month.

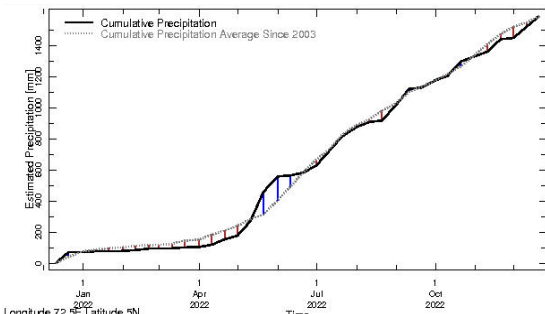


Monthly and Seasonal Monitoring

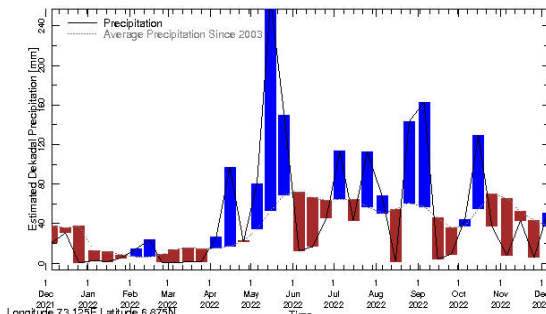
Northern Maldives:



Rainfall in the current year (black) compared to rainfall in previous 5 years

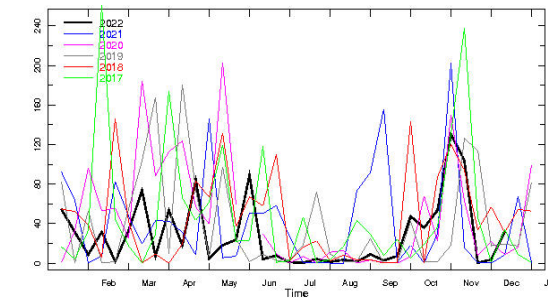


Rainfall of past 365 days (black) compared to average rainfall since 2003.

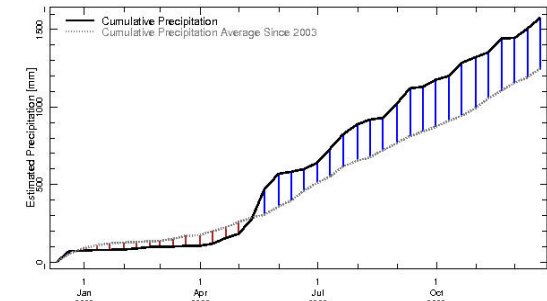


Rainfall in the past 5 years with above-average rainfall hatched in blue and below-average hatched in brown

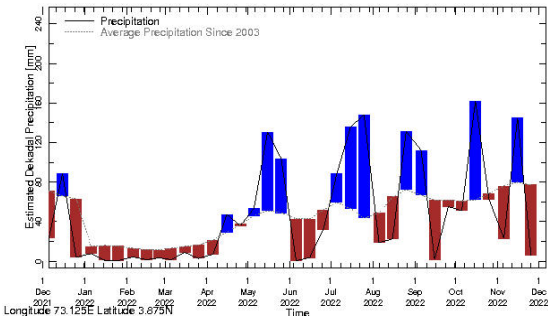
Central Maldives:



Longitude 73.125E Latitude 3.675N
Rainfall in the current year (black) compared to rainfall in previous 5 years

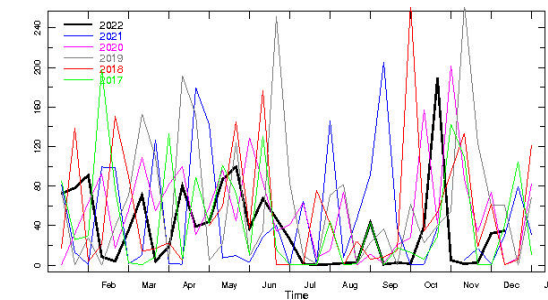


Longitude 72.7E Latitude 3N
Rainfall of past 365 days (black) compared to average rainfall since 2003.

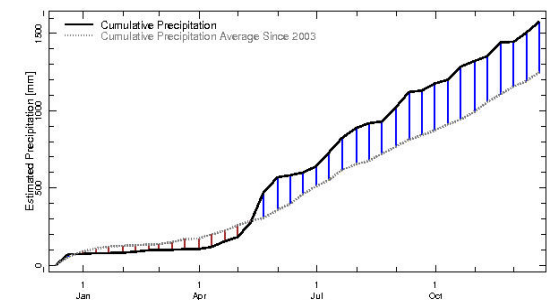


Rainfall in the past 5 years with above-average rainfall hatched in blue and below-average hatched in brown

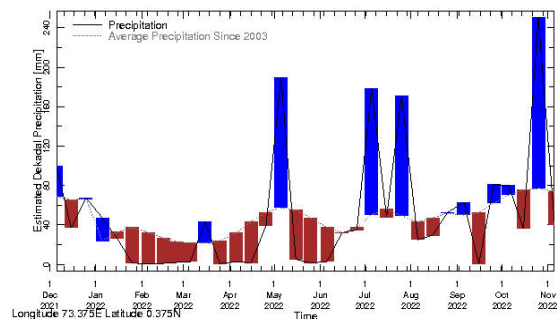
Southern Maldives:



Longitude 73.375E Latitude 0.375N
Rainfall in the current year (black) compared to rainfall in previous 5 years

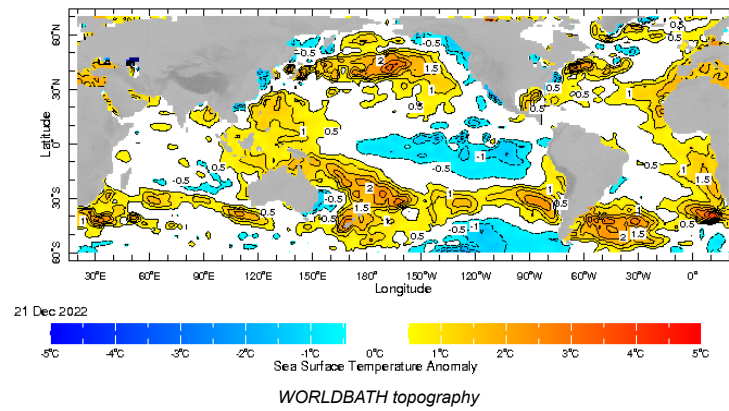


Longitude 72.7E Latitude 5N
Rainfall of past 365 days (black) compared to average rainfall since 2003.

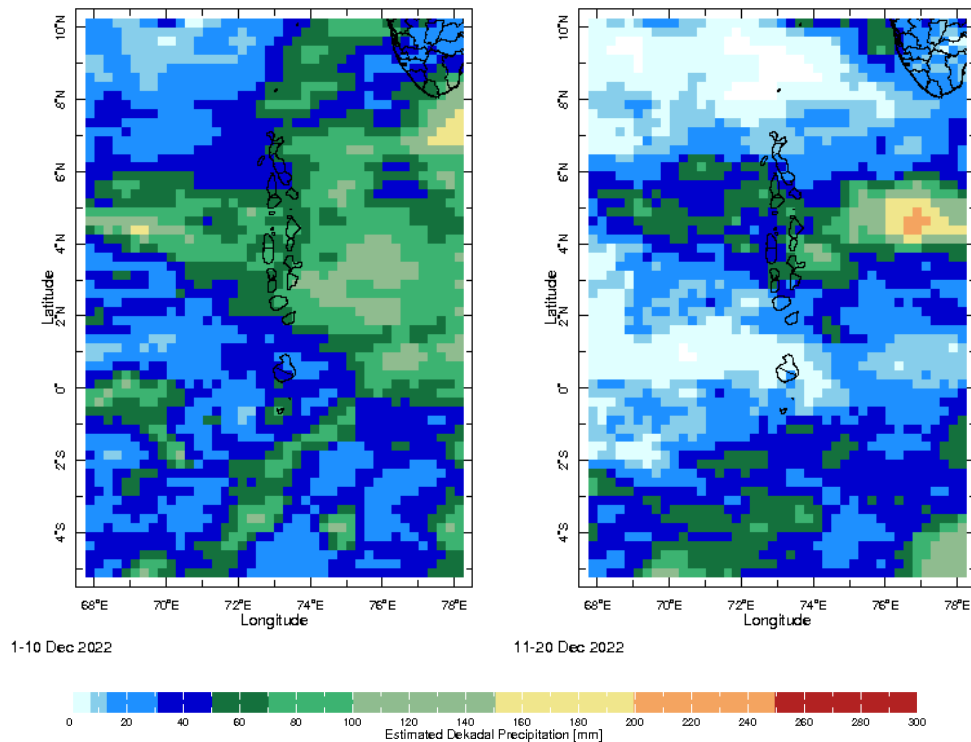


Rainfall in the past 5 years with above-average rainfall hatched in blue and below-average hatched in brown

Ocean Surface Monitoring

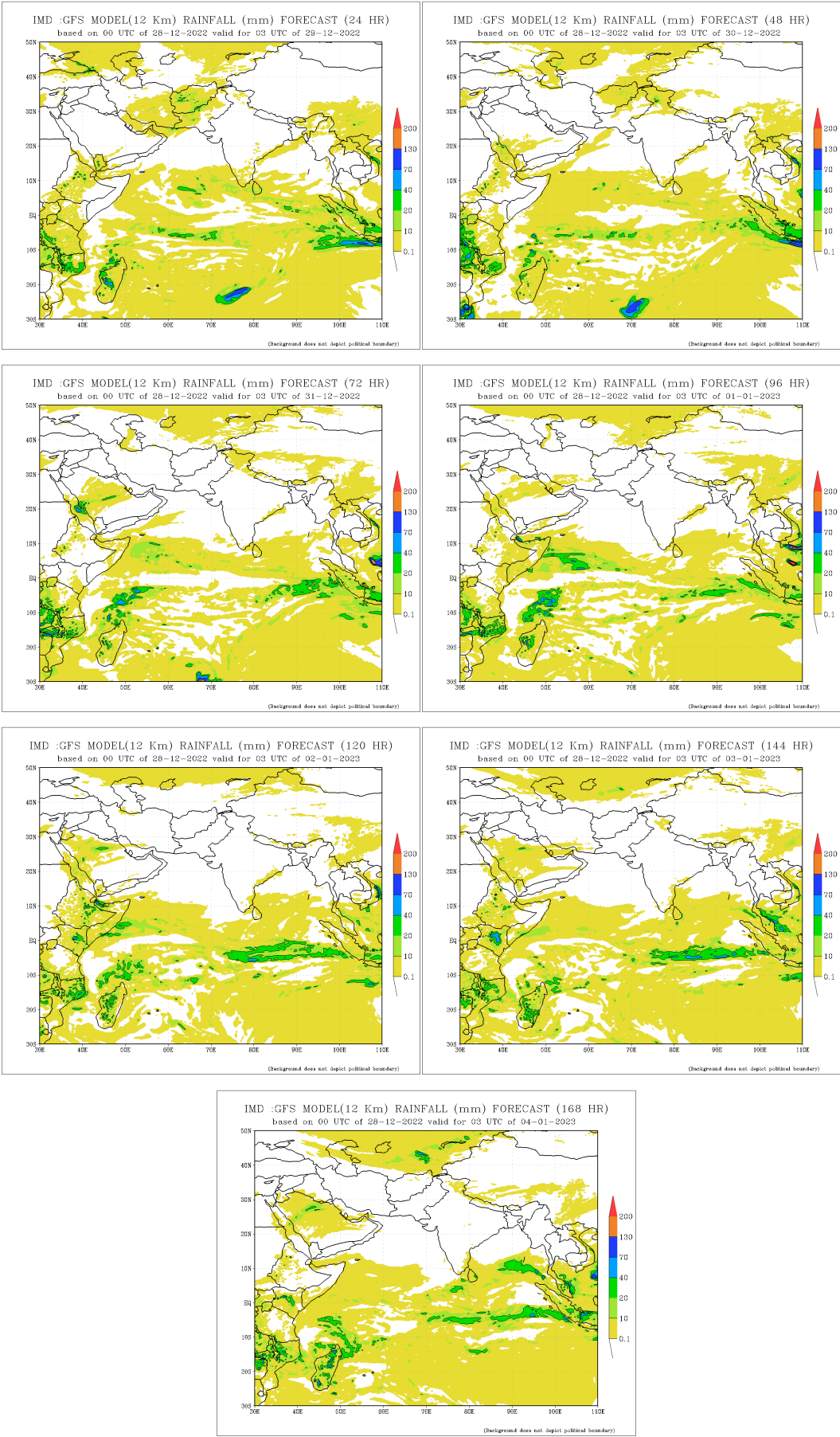


Dekadal (10 Day) Satellite Derived Rainfall Estimates

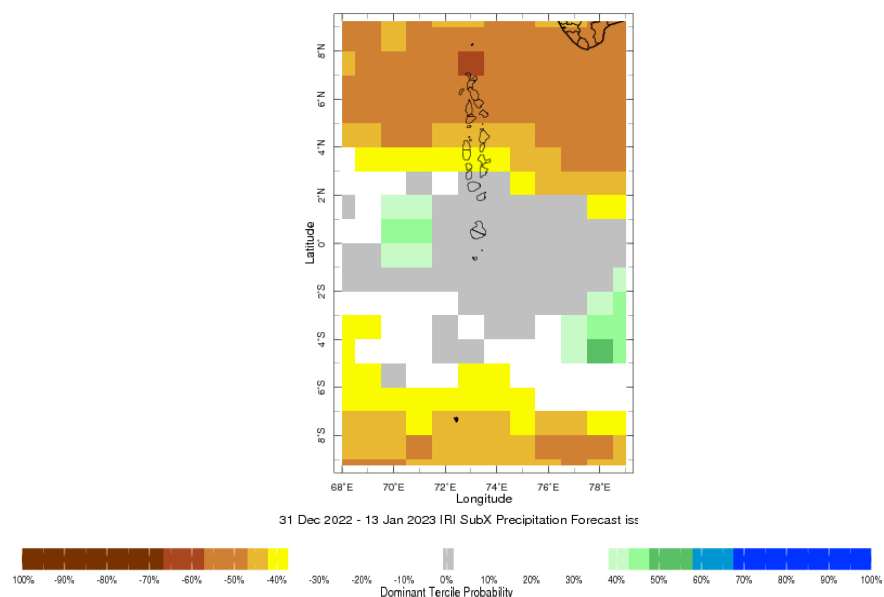


Daily Rainfall Forecast

Daily Rainfall forecasts (up to 7 days ahead) from the IMD is provided in figures below. These predictions are from the GFS (T1534) model covering the entire south Asian region.



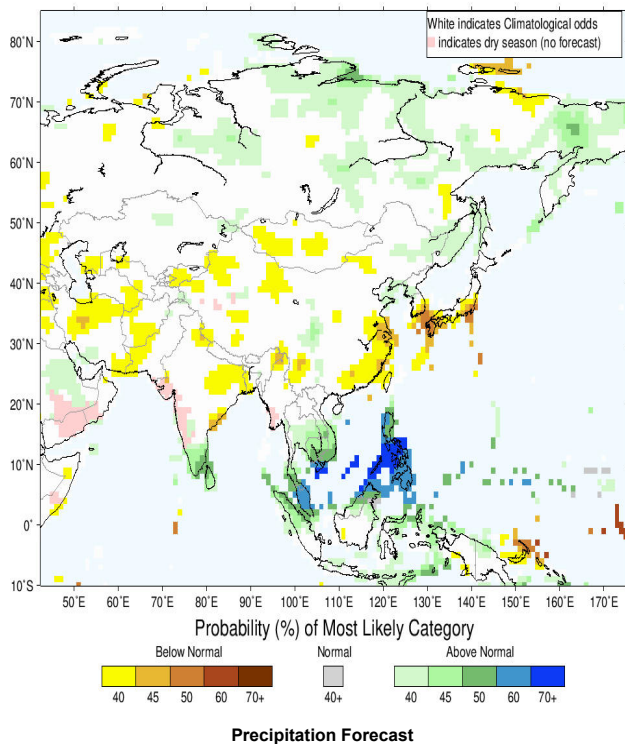
Bi-weekly Precipitation Forecast



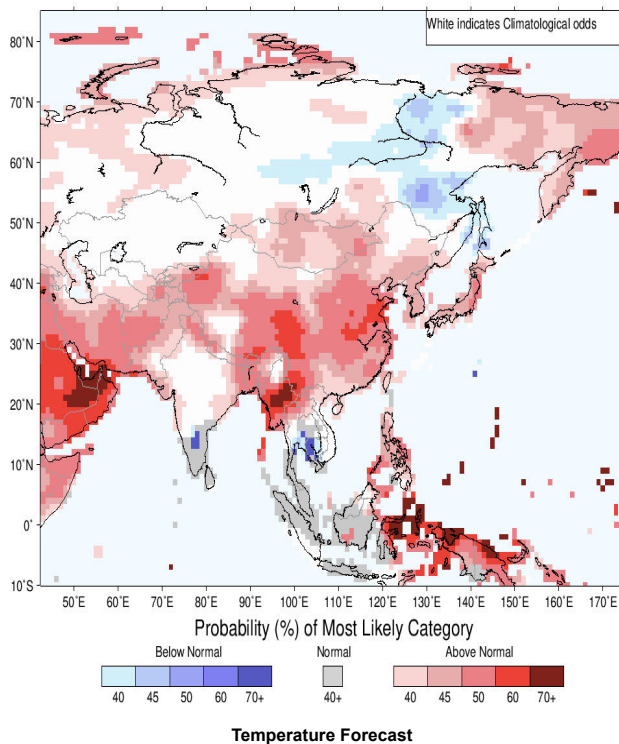
Seasonal Rainfall and Temperature Forecast

Following is the latest seasonal precipitation and temperature prediction for the next 3 months by the IRI. The color shading indicates the probability of the most dominant tercile -- that is, the tercile having the highest forecast probability. The color bar alongside the map defines these dominant tercile probability levels. The upper side of the color bar shows the colors used for increasingly strong probabilities when the dominant tercile is the above-normal tercile, while the lower side shows likewise for the below-normal tercile. The gray color indicates an enhanced probability for the near-normal tercile (nearly always limited to 40%).

IRI Multi-Model Probability Forecast for Precipitation for January–February–March 2023, Issued December 2022



IRI Multi-Model Probability Forecast for Temperature for January–February–March 2023, Issued December 2022



Subscribe to our Monthly Maldives Newsletter

email address

Subscribe

Follow @fectmv

Contact Us
email: fectmv@gmail.com
phone: (+96) 07 788010
blog: www.fectmv.blogspot.com

Foundation for Environment, Climate & Technology,
REM, Madhrasaadhoshuge,
Henveiru, Hadheebee Magu,
Male', 20184,
Maldives