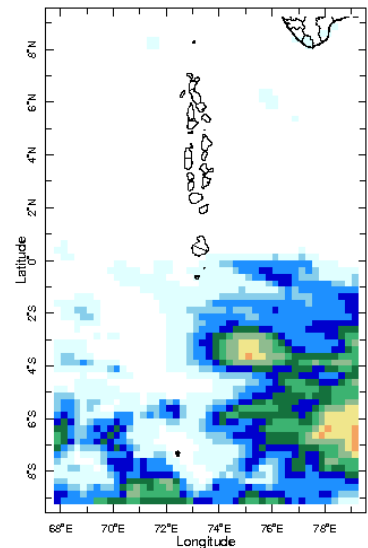
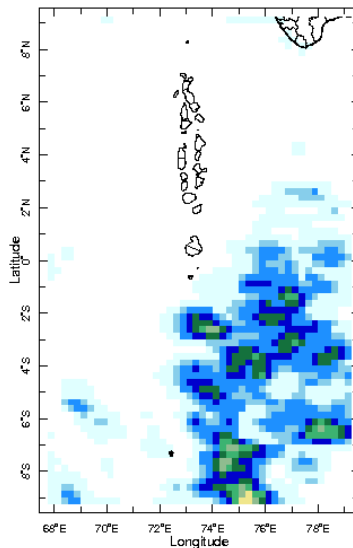
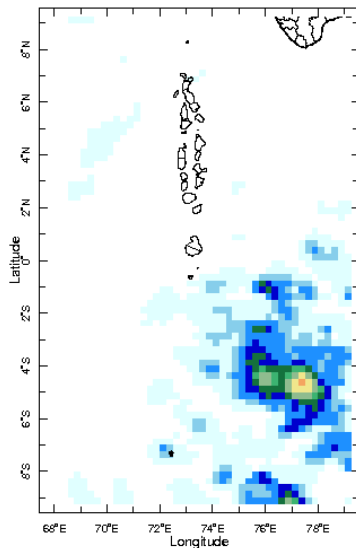
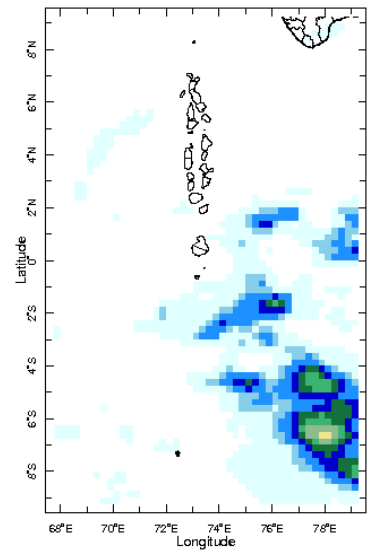
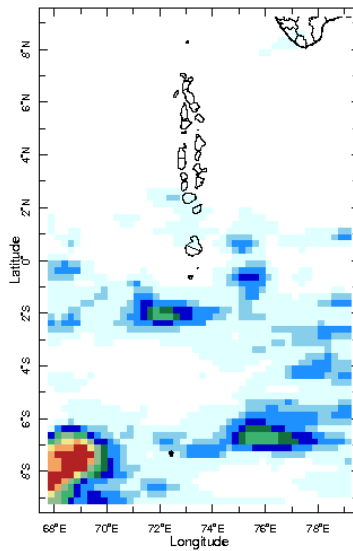
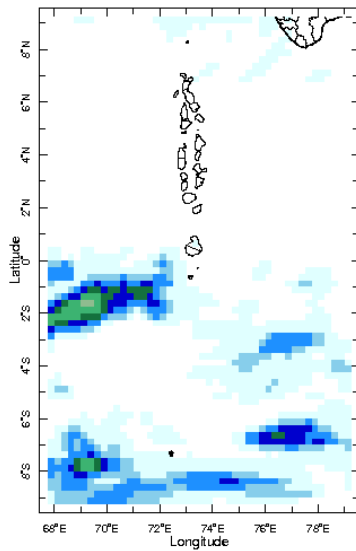
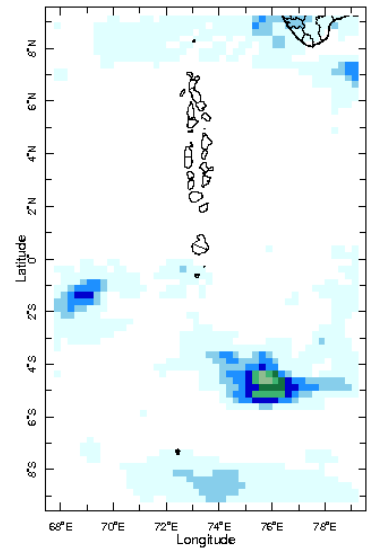
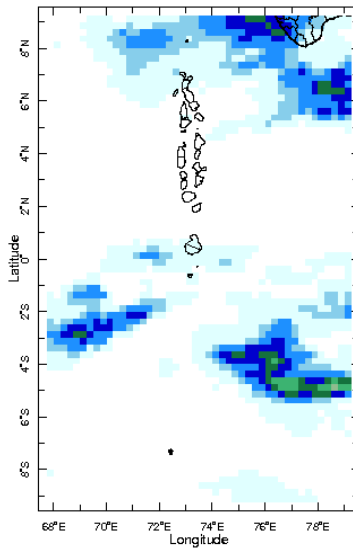
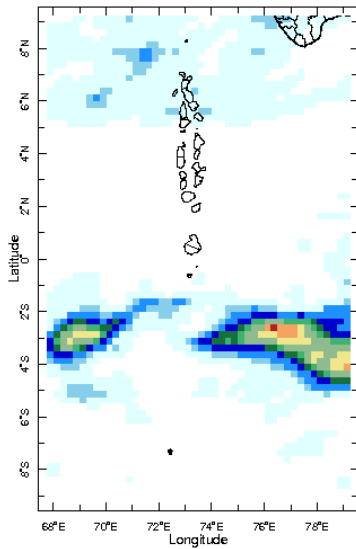
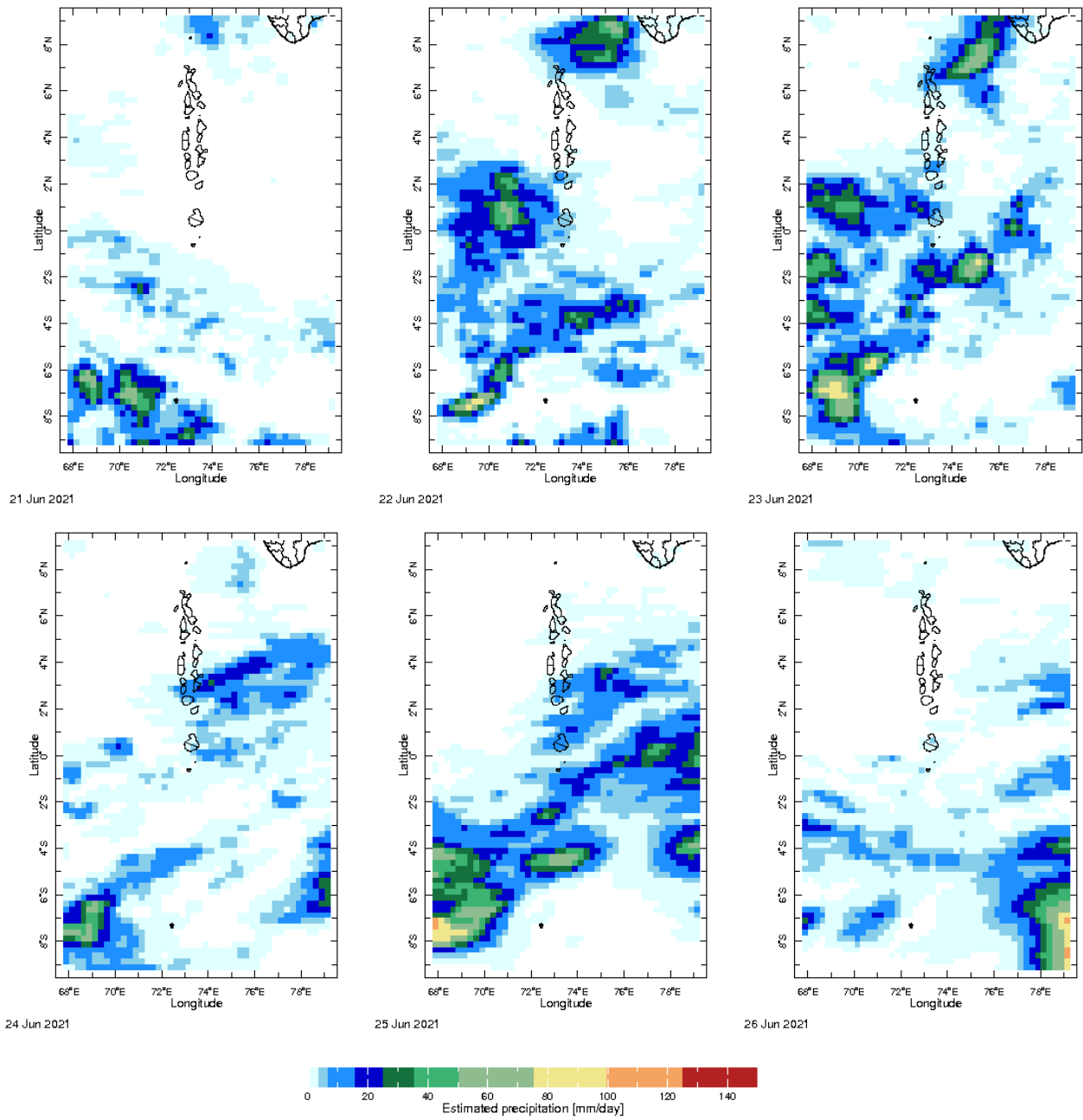




Daily Rainfall Monitoring

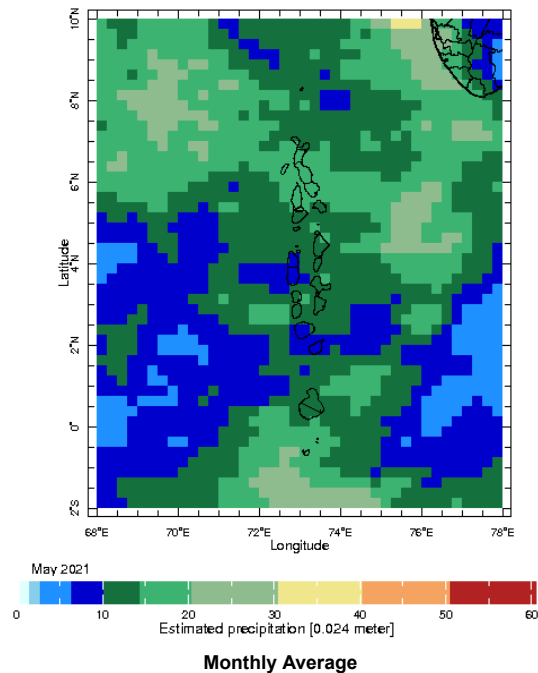
The following figures show the observed rainfall in the last 15 days in Maldives.





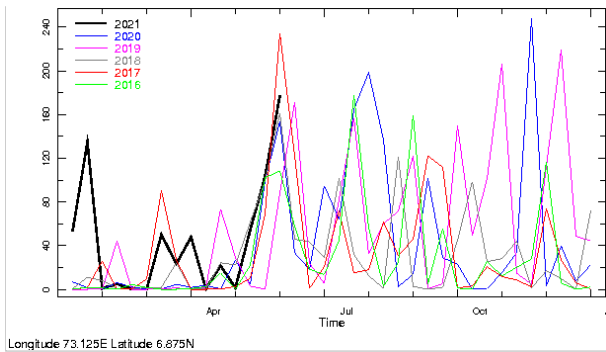
Monthly Rainfall Monitoring

The figure shows the average observed rainfall in the previous month.

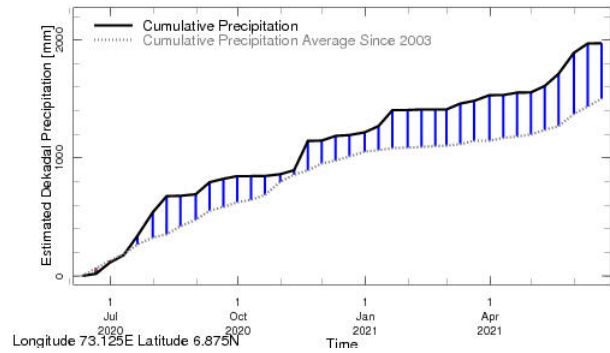


Monthly and Seasonal Monitoring

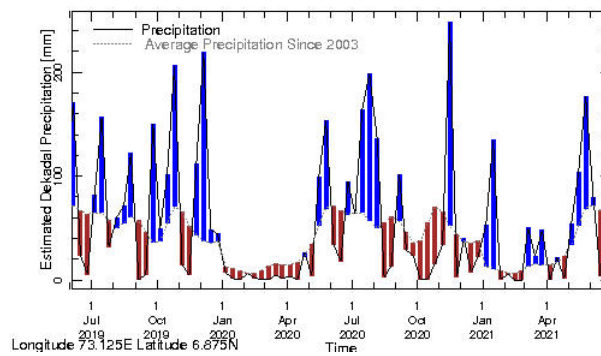
Northern Maldives:



Rainfall in the current year (black) compared to rainfall in previous 5 years

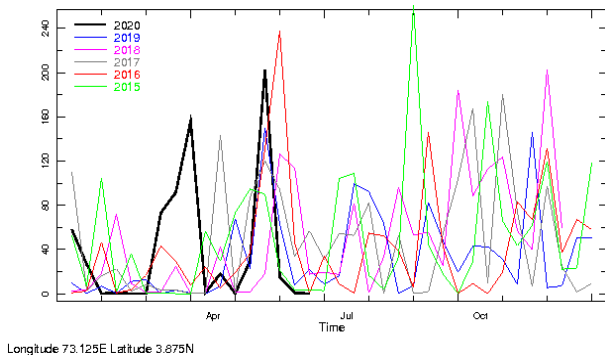


Rainfall of past 365 days (black) compared to average rainfall since 2003.

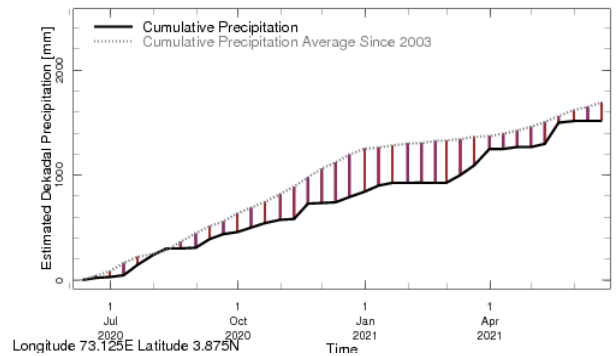


Rainfall in the past 2 years with above-average rainfall hatched in blue and below-average hatched in brown

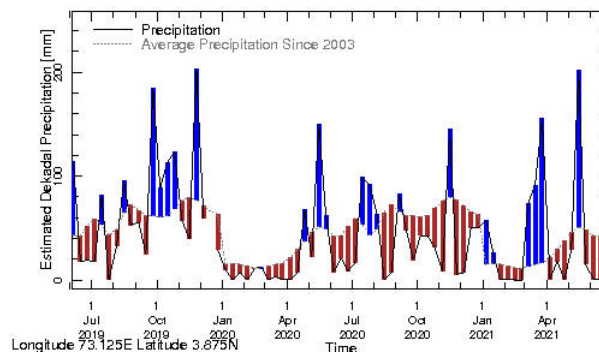
Central Maldives:



Rainfall in the current year (black) compared to rainfall in previous 5 years

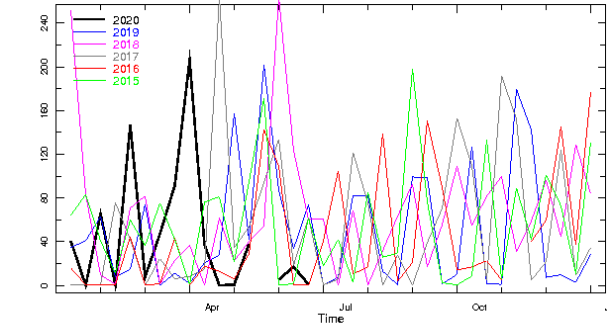


Rainfall of past 365 days (black) compared to average rainfall since 2003.

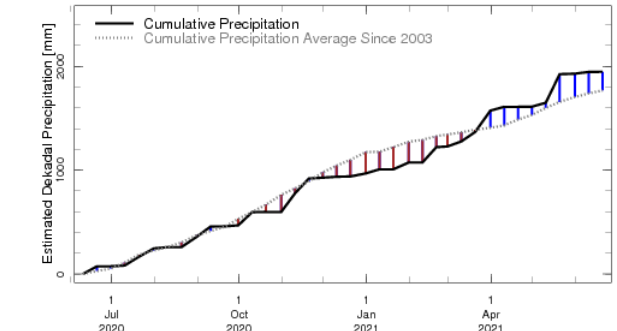


Rainfall in the past 2 years with above-average rainfall hatched in blue and below-average hatched in brown

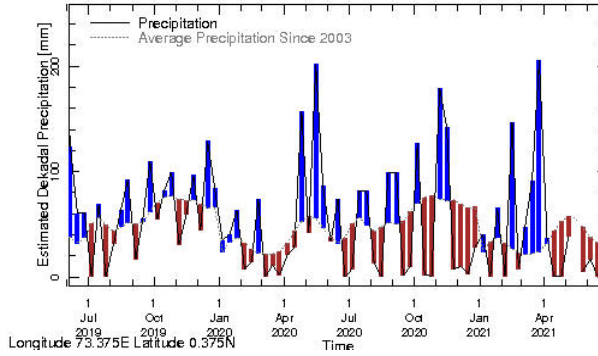
Southern Maldives:



Rainfall in the current year (black) compared to rainfall in previous 5 years

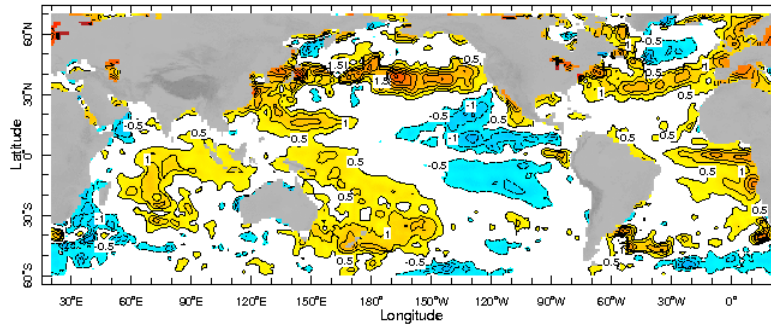


Rainfall of past 365 days (black) compared to average rainfall since 2003.



Rainfall in the past 2 years with above-average rainfall hatched in blue and below-average hatched in brown

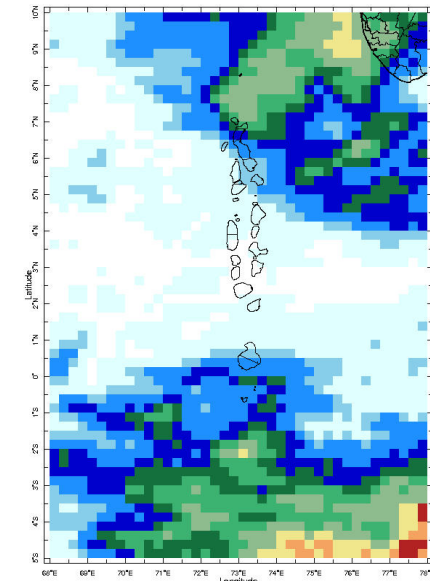
Ocean Surface Monitoring



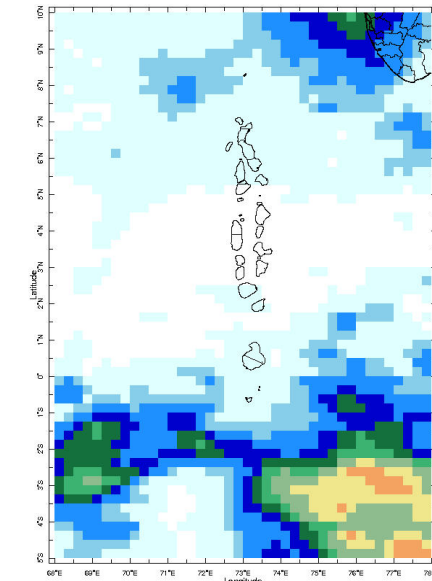
16 Jun 2021
Sea Surface Temperature Anomaly

WORLDBATH topography

Dekadal (10 Day) Satellite Derived Rainfall Estimates



1-10 Jun 2021

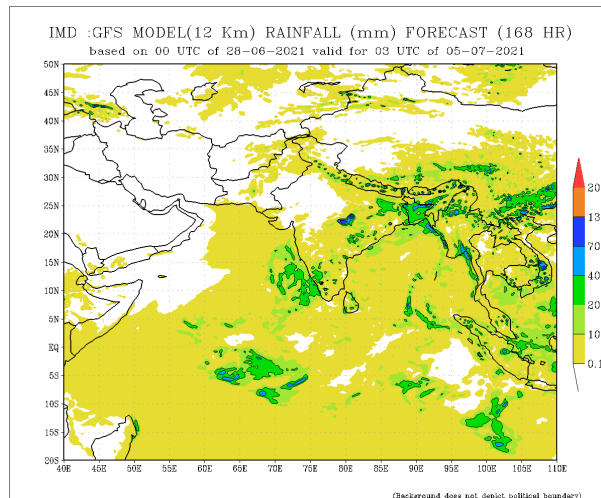
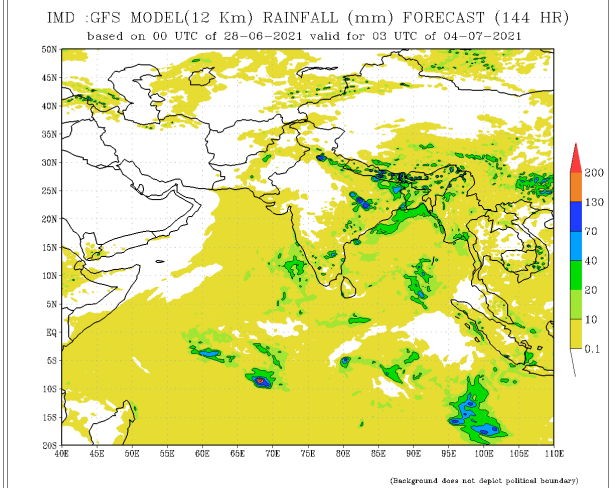
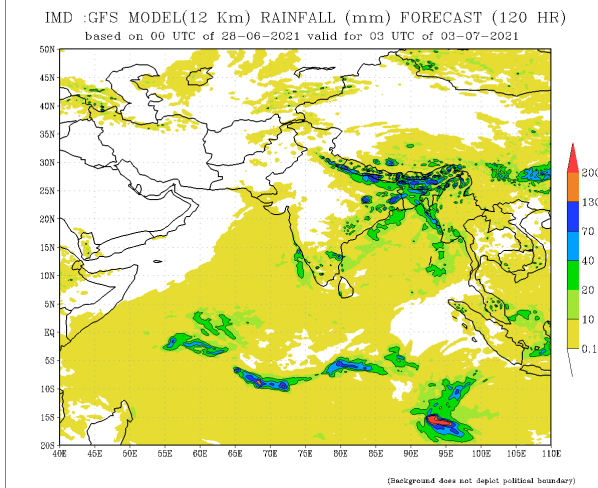
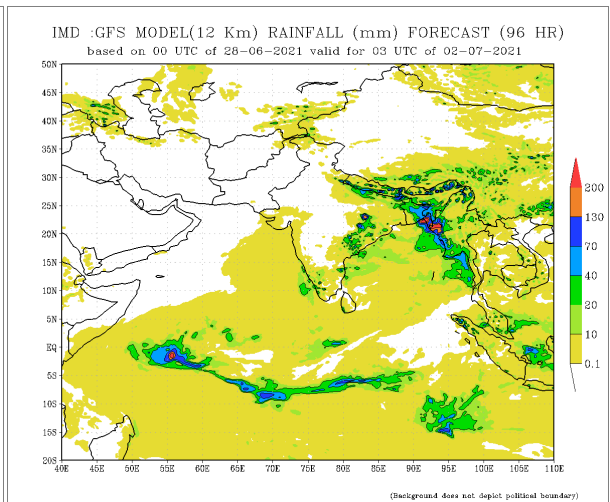
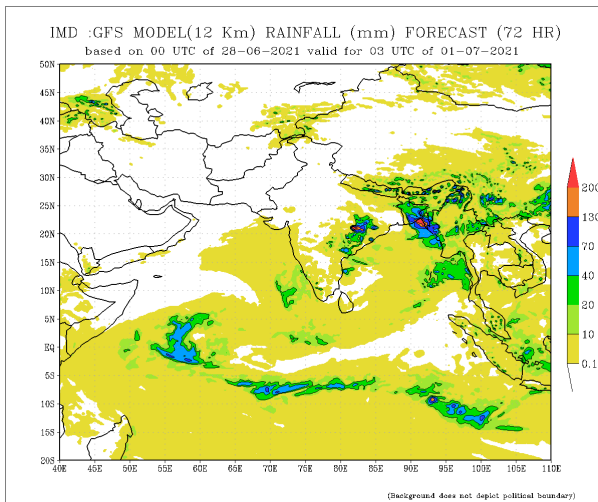
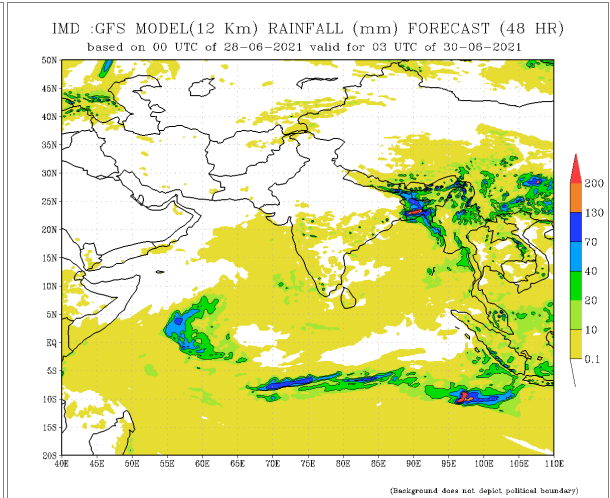
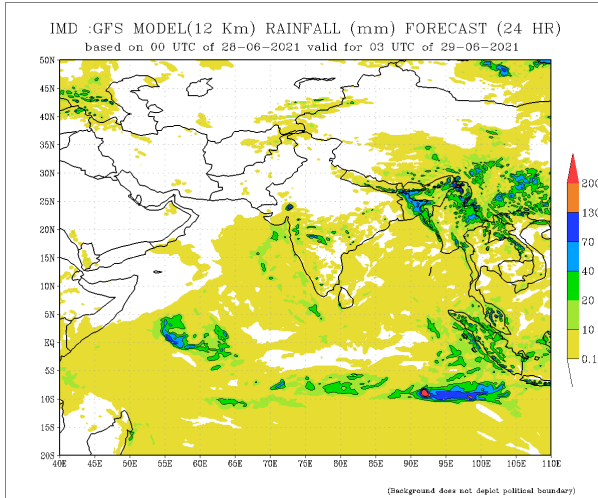


11-20 Jun 2021

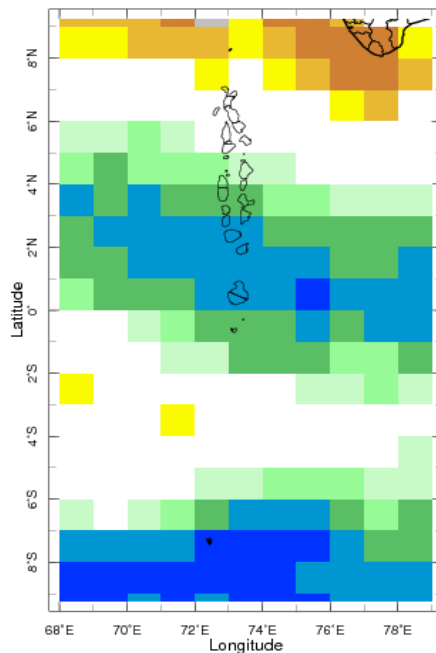
Estimated Dekadal Precipitation [mm]

Daily Rainfall Forecast

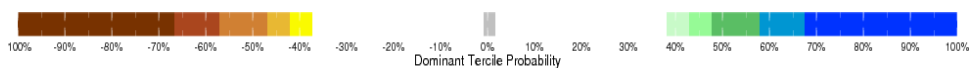
Daily Rainfall forecasts (up to 7 days ahead) from the IMD is provided in figures below. These predictions are from the GFS (T1534) model covering the entire south Asian region.



Weekly Precipitation Forecast



26 Jun 2021 - 2 Jul 2021 IRI SubX Precipitation Forecast issue

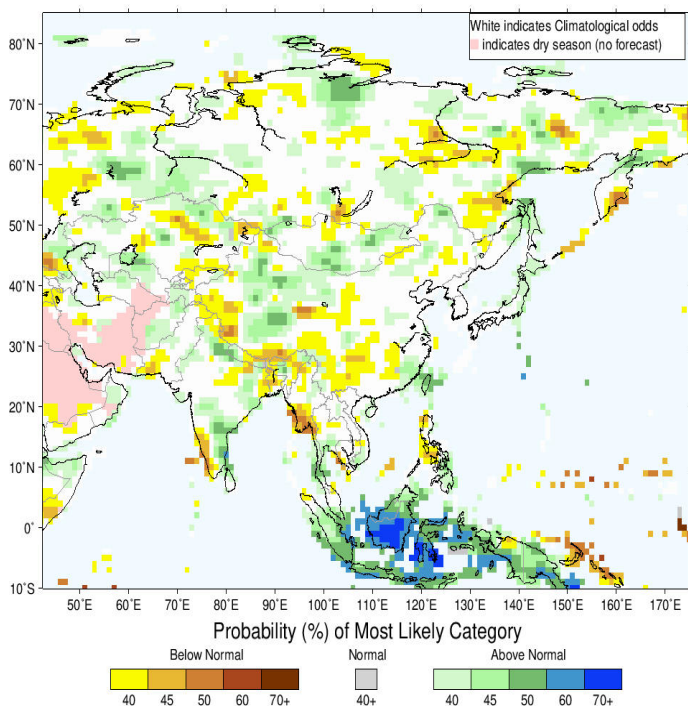


Seasonal Rainfall and Temperature Forecast

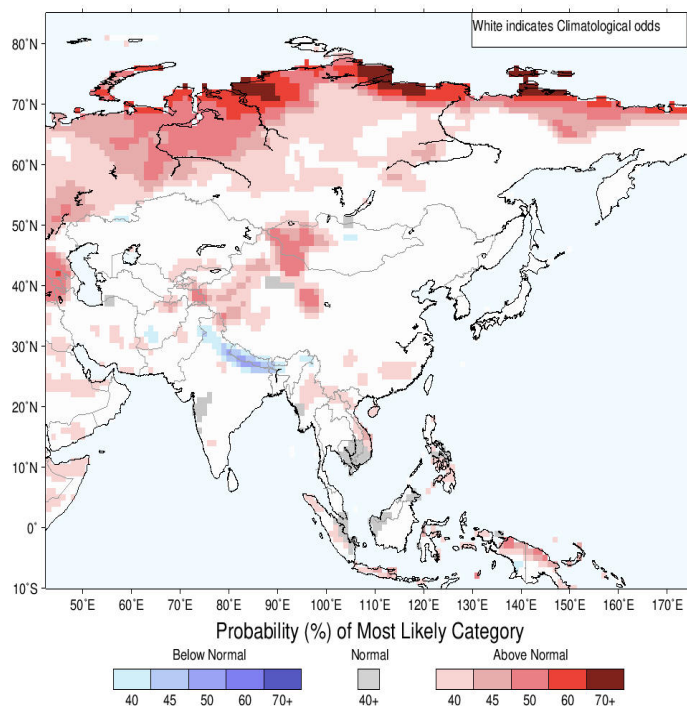
Following is the latest seasonal precipitation and temperature prediction for the next 3 months by the IRI. The color shading indicates the probability of the most dominant tercile -- that is, the tercile having the highest forecast probability. The color bar alongside the map defines these dominant tercile probability levels. The upper side of the color bar shows the colors used for increasingly strong probabilities when the dominant tercile is the above-normal tercile, while the lower side shows likewise for the below-normal tercile. The gray color indicates an enhanced probability for the near-normal tercile (nearly always limited to 40%).

IRI Multi-Model Probability Forecast for Precipitation for July–August–September 2021, Issued June 2021

IRI Multi-Model Probability Forecast for Temperature for July–August–September 2021, Issued June 2021



Precipitation Forecast



Temperature Forecast

Subscribe to our Monthly Maldives Newsletter

email address

Subscribe

Follow @fectmv

Contact Us

email: fectmv@gmail.com

phone: (+96) 07 788010

blog: www.fectmv.blogspot.com

Foundation for Environment, Climate & Technology,
REM, Madhrasaadhoshuge,
Henveiru, Hadheebee Magu,
Male', 20184,
Maldives