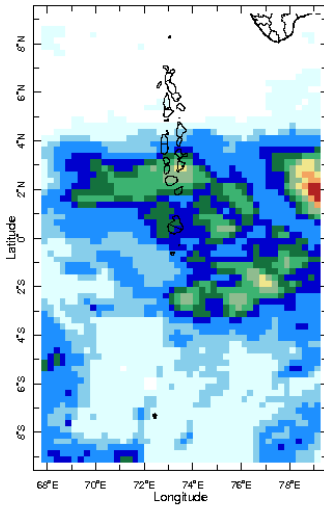


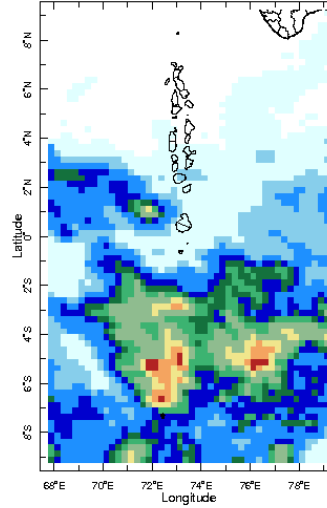


Daily Rainfall Monitoring

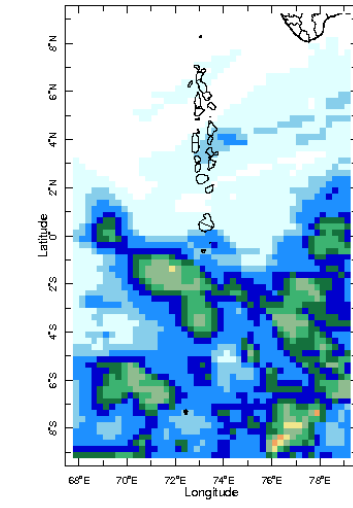
The following figures show the observed rainfall in the last 15 days in Maldives.



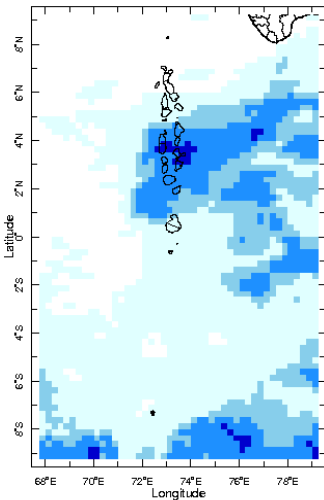
12 Feb 2024



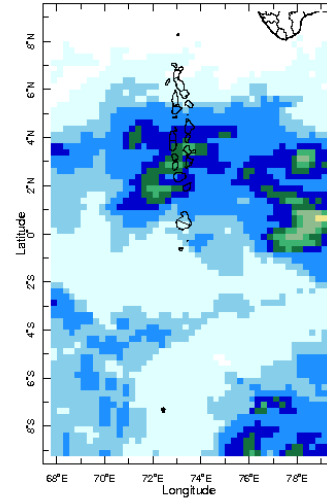
13 Feb 2024



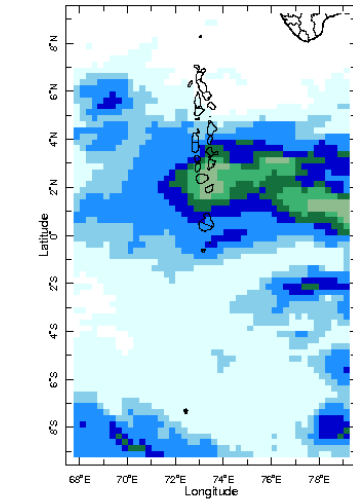
14 Feb 2024



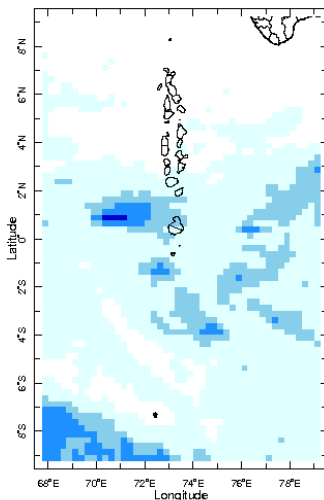
15 Feb 2024



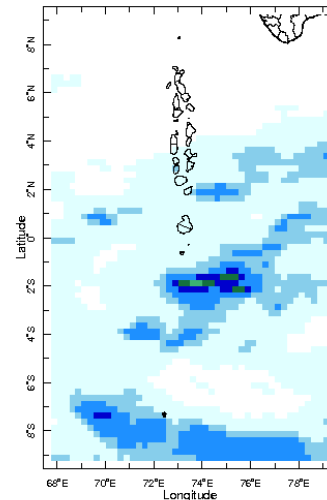
16 Feb 2024



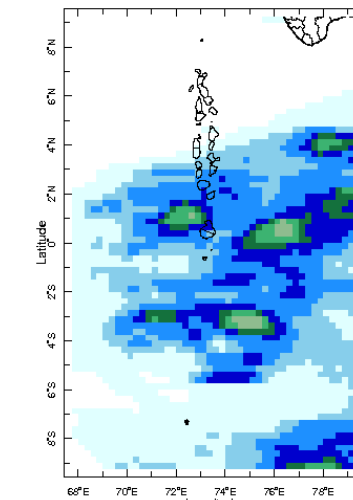
17 Feb 2024



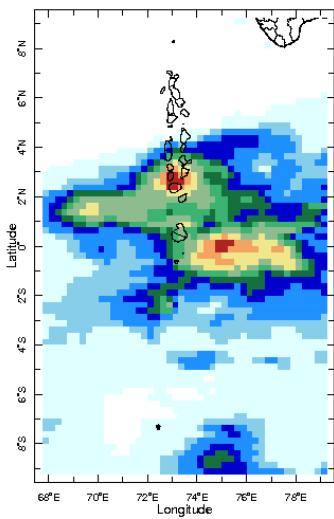
18 Feb 2024



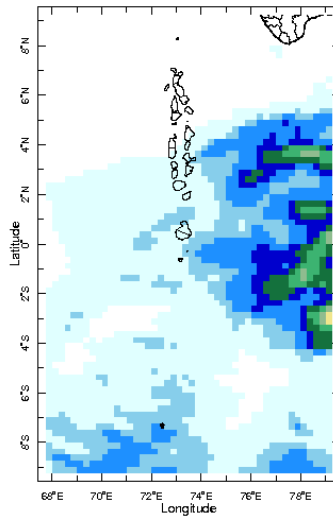
19 Feb 2024



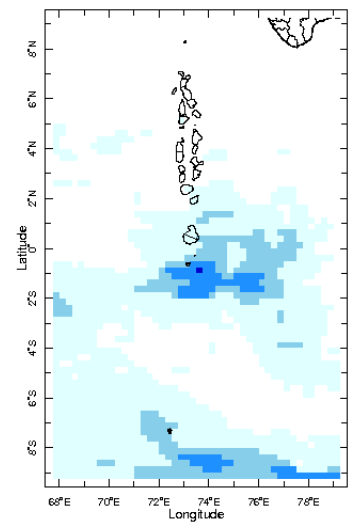
20 Feb 2024



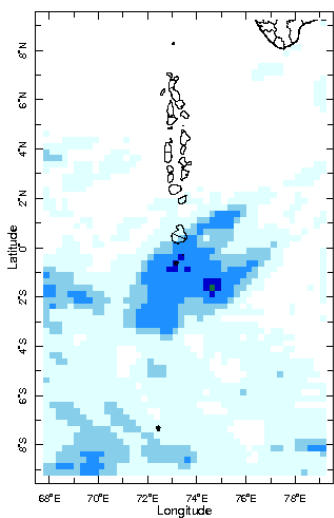
21 Feb 2024



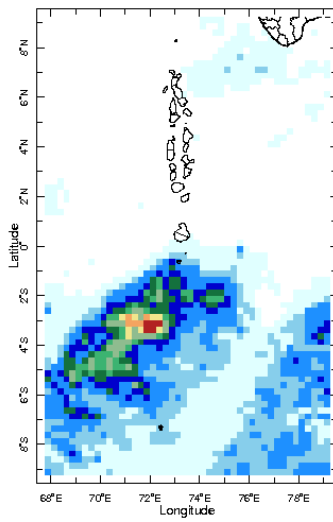
22 Feb 2024



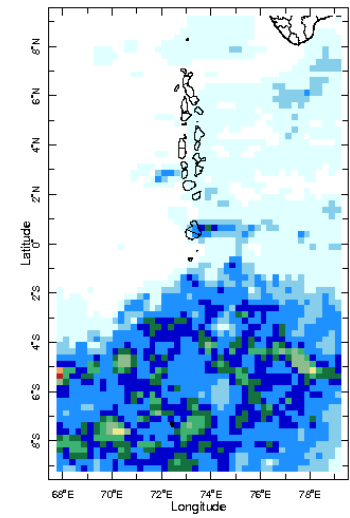
23 Feb 2024



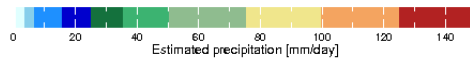
24 Feb 2024



25 Feb 2024

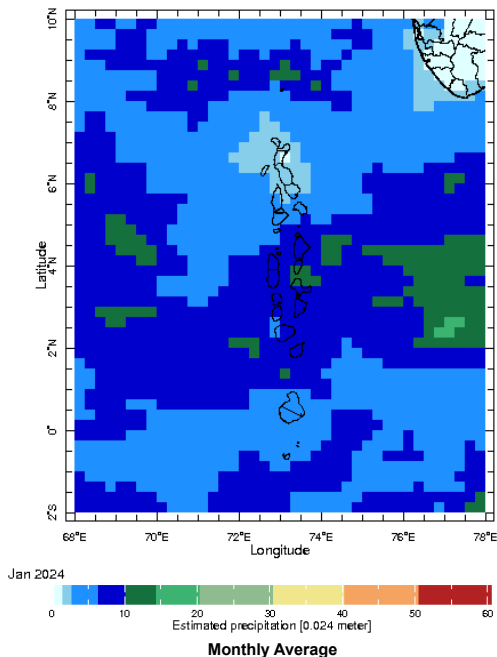


26 Feb 2024



Monthly Rainfall Monitoring

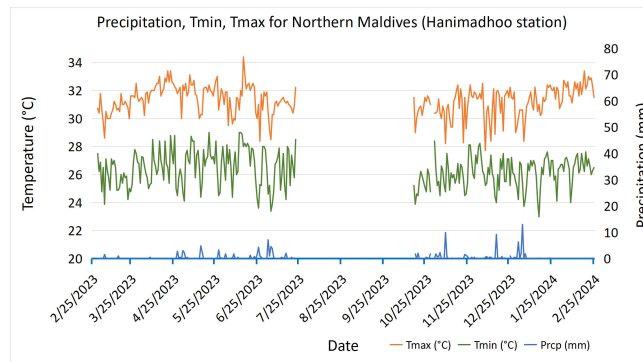
The figure shows the average observed rainfall in the previous month.



Monthly Average

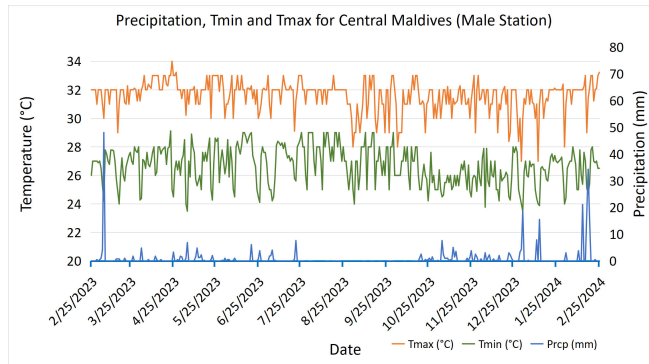
Monthly and Seasonal Monitoring

Northern Maldives:



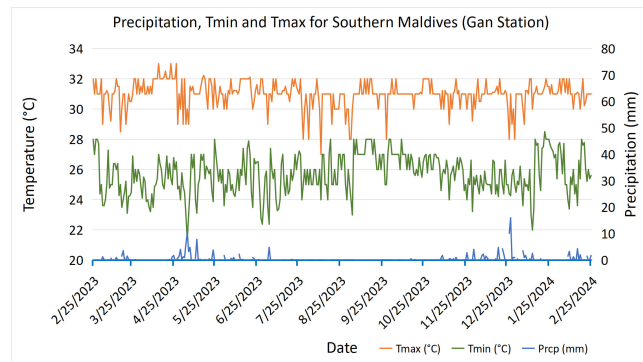
Daily Rainfall, Tmin & Tmax for the previous year in Hanimadhoo station (2023 February to 2024 January)

Central Maldives:



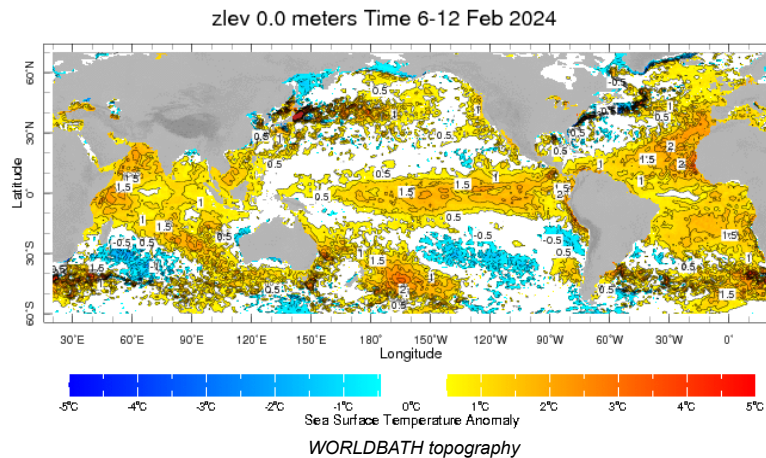
Daily Rainfall, Tmin & Tmax for the previous year in Male station (2023 February to 2024 February)

Southern Maldives:

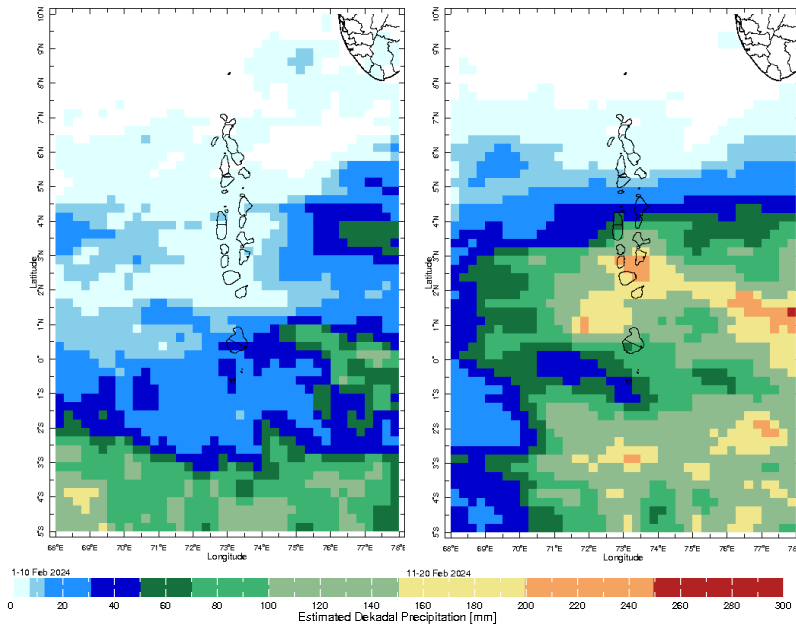


Daily Rainfall, Tmin & Tmax for the previous year in Gan station (2023 February to 2024 February)

Ocean Surface Monitoring

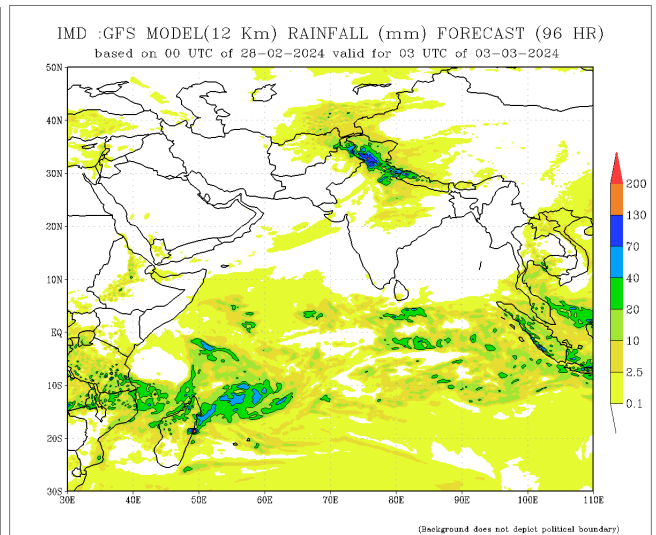
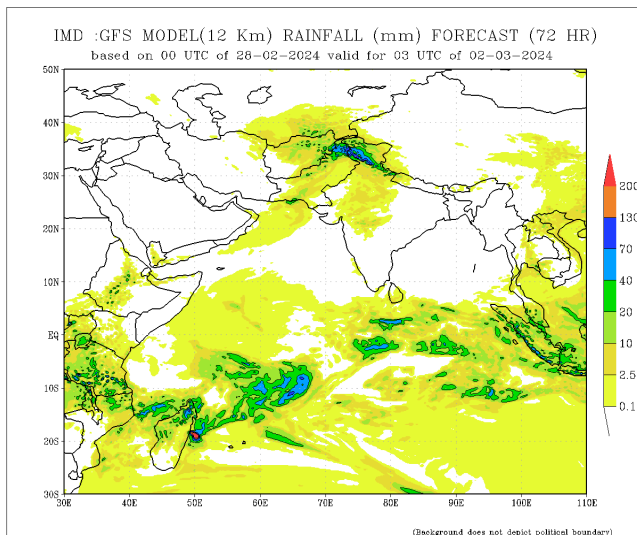
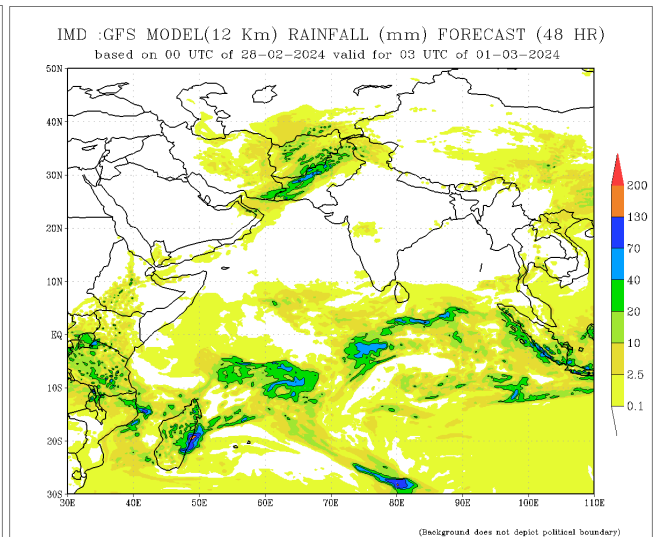
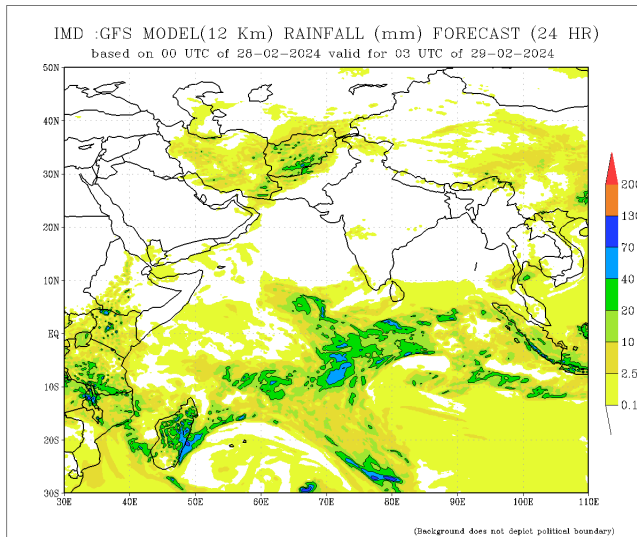


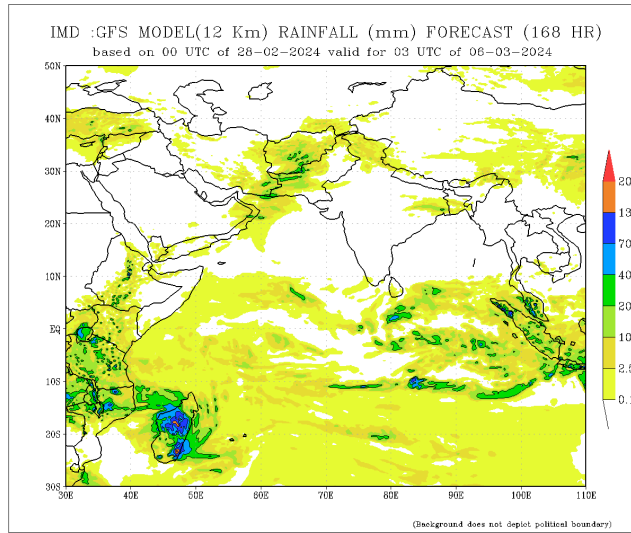
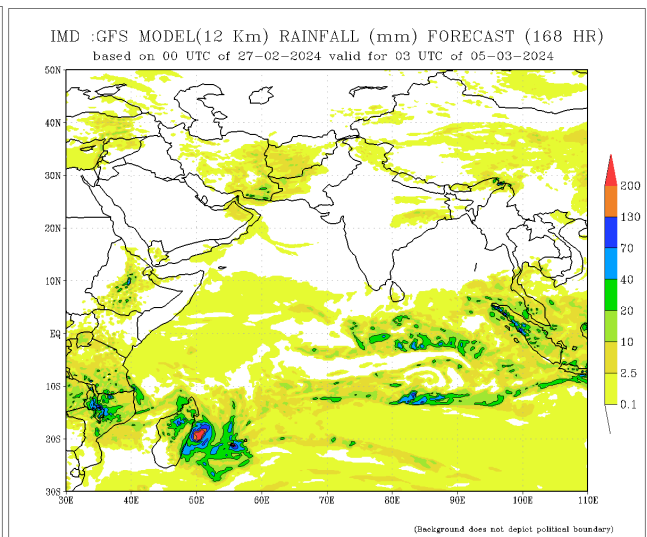
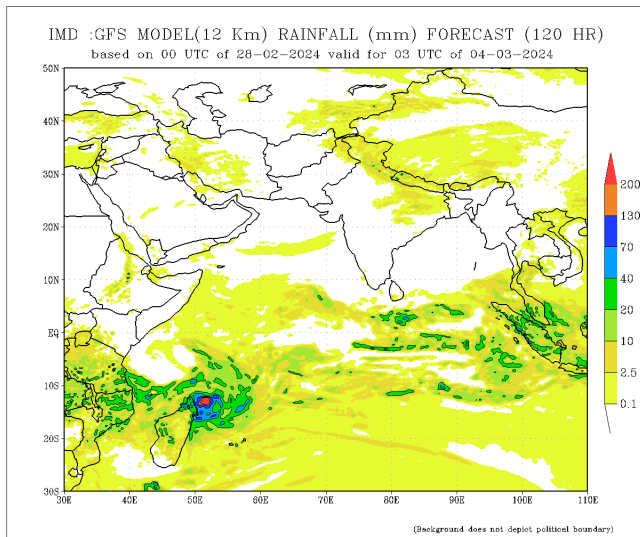
Dekadal (10 Day) Satellite Derived Rainfall Estimates



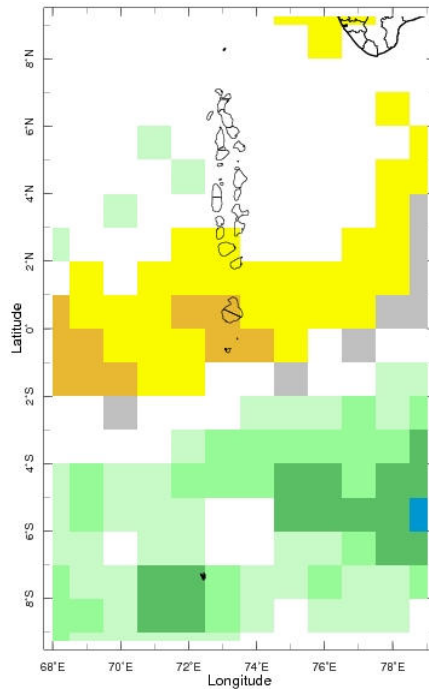
Daily Rainfall Forecast

Daily Rainfall forecasts (up to 7 days ahead) from the IMD is provided in figures below. These predictions are from the GFS (T1534) model covering the entire south Asian region.

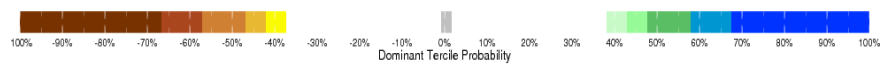




Bi-weekly Precipitation Forecast



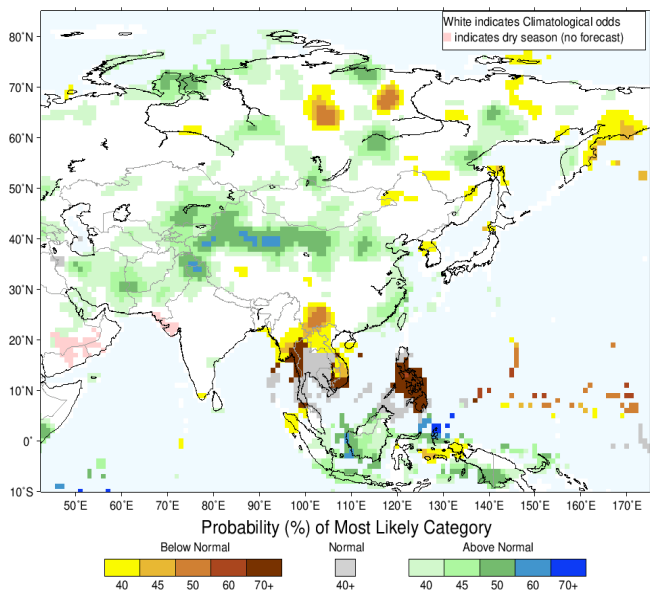
2-15 Mar 2024 IRI SubX Precipitation Forecast issued 0000 23 Feb 202



Seasonal Rainfall and Temperature Forecast

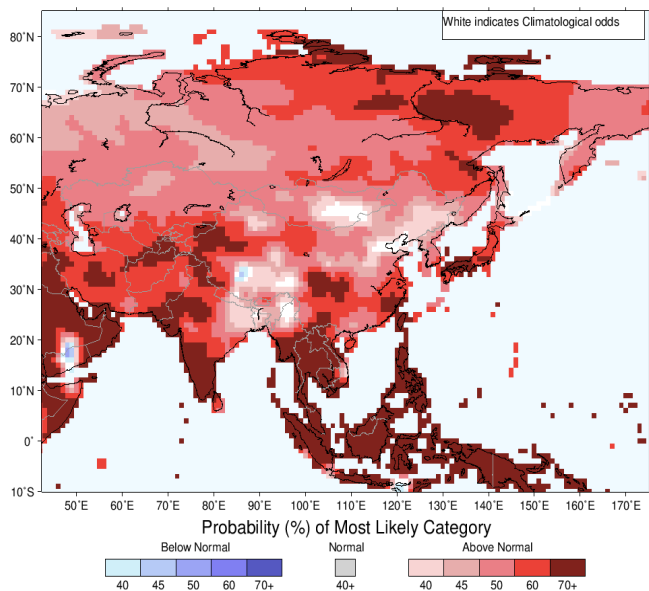
Following is the latest seasonal precipitation and temperature prediction for the next 3 months by the IRI. The color shading indicates the probability of the most dominant tercile -- that is, the tercile having the highest forecast probability. The color bar alongside the map defines these dominant tercile probability levels. The upper side of the color bar shows the colors used for increasingly strong probabilities when the dominant tercile is the above-normal tercile, while the lower side shows likewise for the below-normal tercile. The gray color indicates an enhanced probability for the near-normal tercile (nearly always limited to 40%).

IRI Multi-Model Probability Forecast for Precipitation for March-April-May 2024, Issued February 2024



Precipitation Forecast

IRI Multi-Model Probability Forecast for Temperature for March-April-May 2024, Issued February 2024



Temperature Forecast

Subscribe to our Monthly Maldives Newsletter

email address

Subscribe

Follow @fectmv

Contact Us
email: fectmv@gmail.com
phone: (+96) 07 788010
blog: www.fectmv.blogspot.com

Foundation for Environment, Climate & Technology,
REM, Madhrasaadhoshuge,
Henvairu, Hadheebee Magu,
Male', 20184,
Maldives