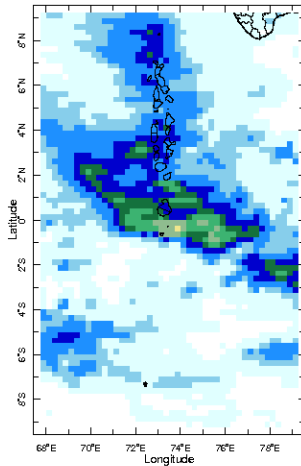


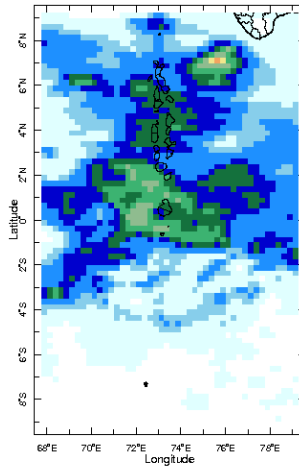


## Daily Rainfall Monitoring

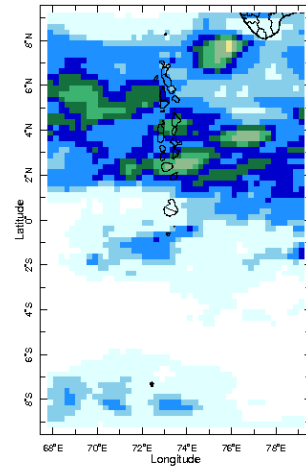
The following figures show the observed rainfall in the last 15 days in Maldives.



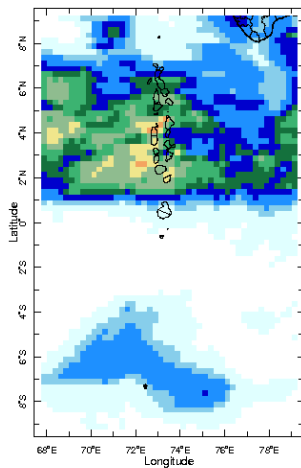
10 Oct 2022



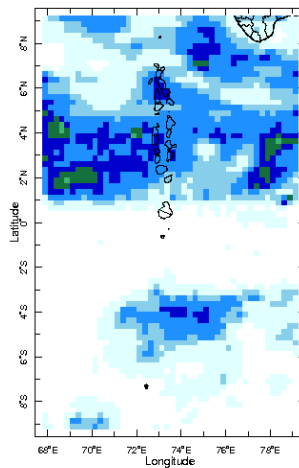
11 Oct 2022



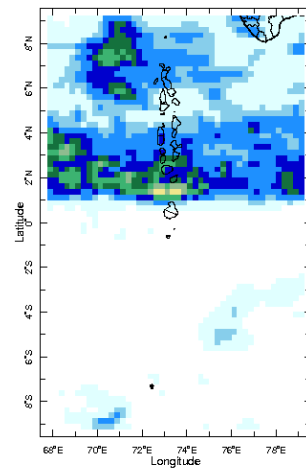
12 Oct 2022



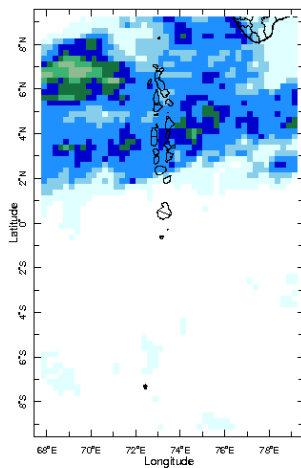
13 Oct 2022



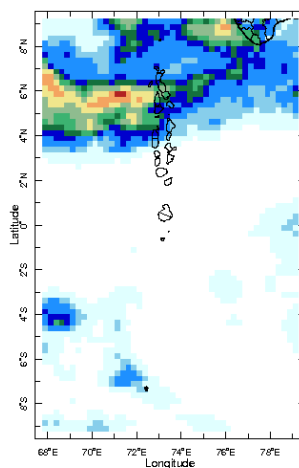
14 Oct 2022



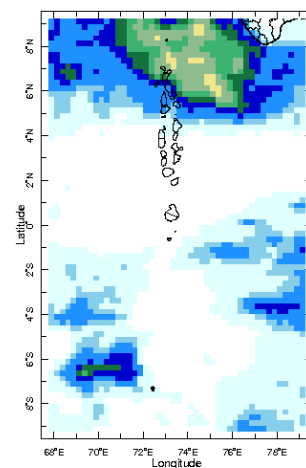
15 Oct 2022



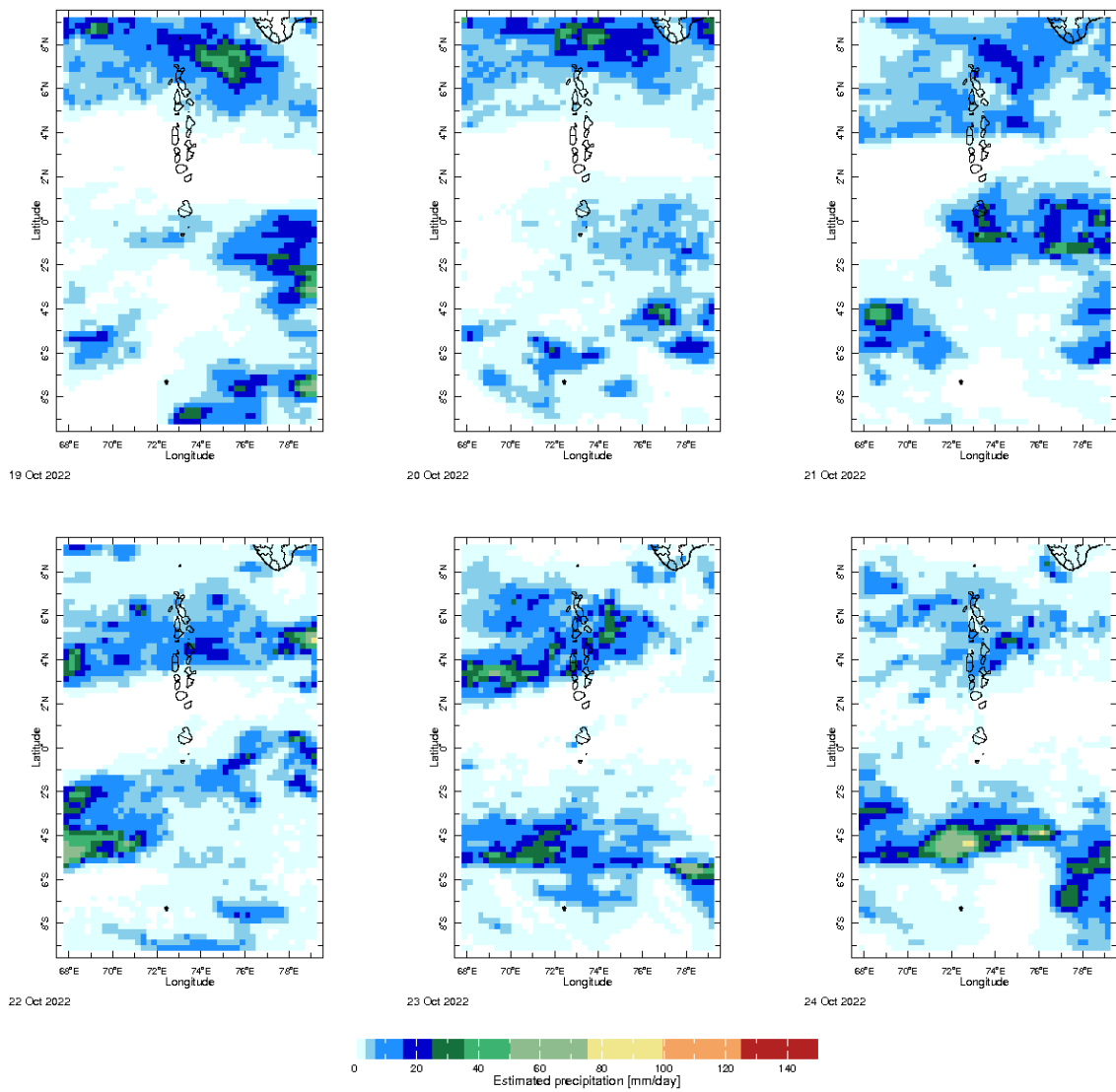
16 Oct 2022



17 Oct 2022

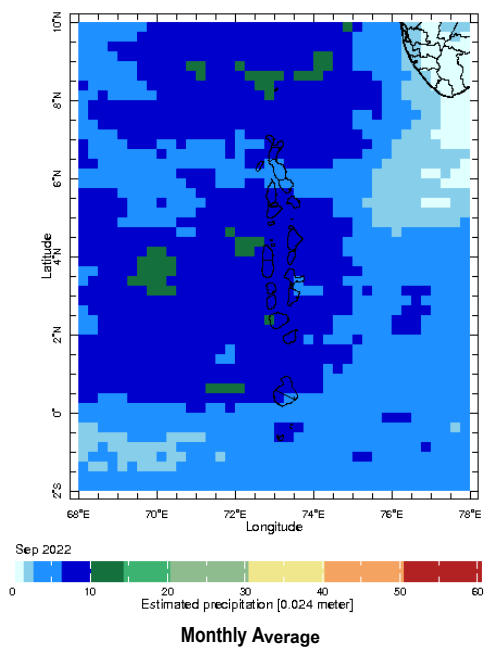


18 Oct 2022

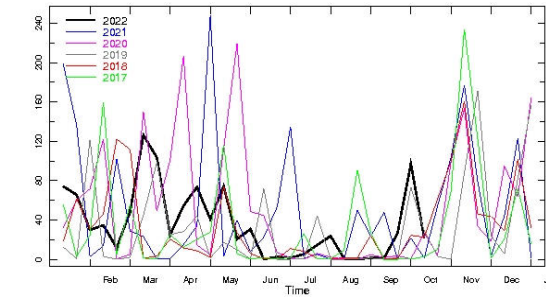


## Monthly Rainfall Monitoring

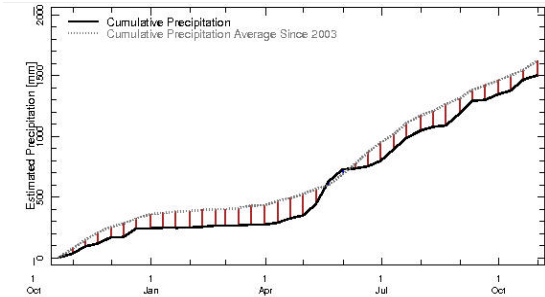
The figure shows the average observed rainfall in the previous month.



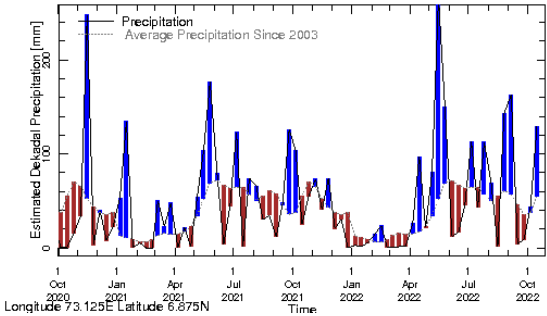
Northern Maldives:



Longitude 73.125E Latitude 6.875N  
Rainfall in the current year (black) compared to rainfall in previous 5 years

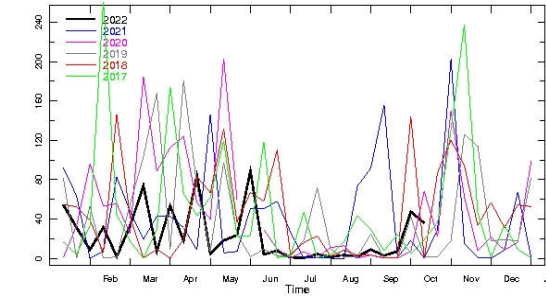


Longitude 72.5E Latitude 5N  
Rainfall of past 365 days (black) compared to average rainfall since 2003.

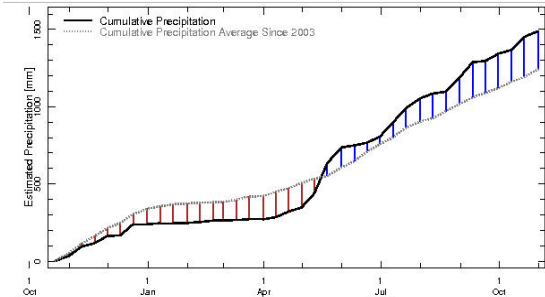


Longitude 73.125E Latitude 6.875N  
Rainfall in the past 5 years with above-average rainfall hatched in blue and below-average hatched in brown

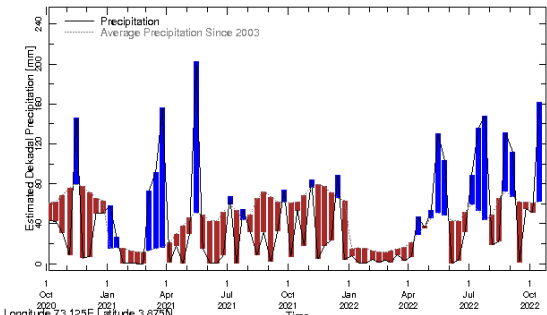
Central Maldives:



Longitude 73.125E Latitude 3.875N  
Rainfall in the current year (black) compared to rainfall in previous 5 years

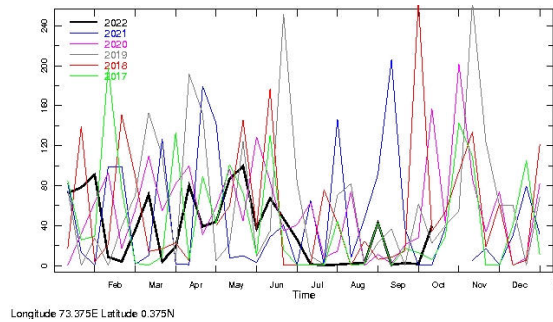


Longitude 72.7E Latitude 3N  
Rainfall of past 365 days (black) compared to average rainfall since 2003.

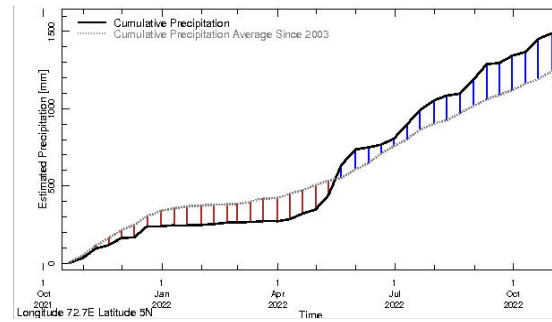


Longitude 73.125E Latitude 3.875N  
Rainfall in the past 5 years with above-average rainfall hatched in blue and below-average hatched in brown

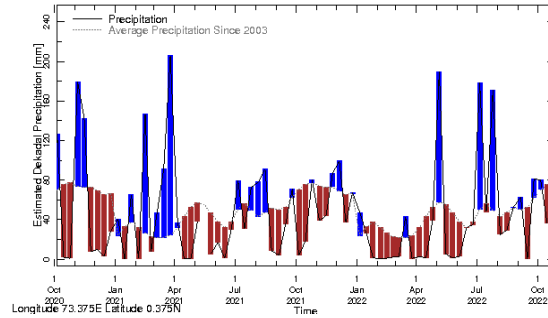
## Southern Maldives:



Rainfall in the current year (black) compared to rainfall in previous 5 years

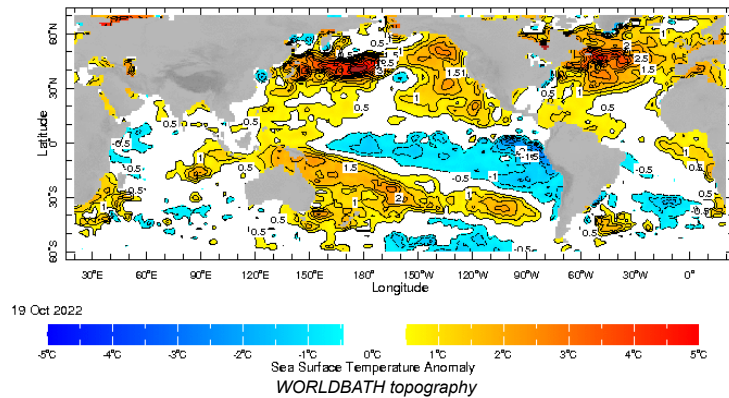


Rainfall of past 365 days (black) compared to average rainfall since 2003.

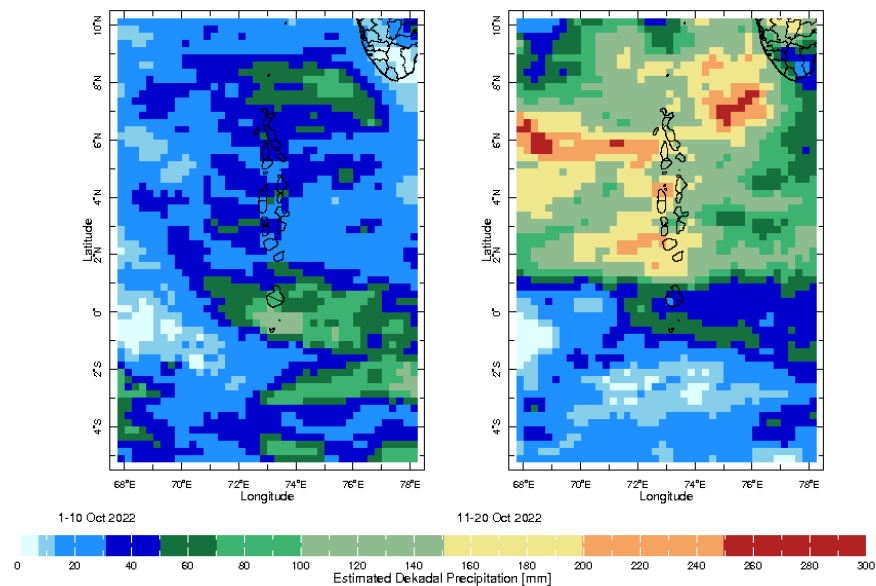


Rainfall in the past 5 years with above-average rainfall hatched in blue and below-average rainfall hatched in brown

## Ocean Surface Monitoring

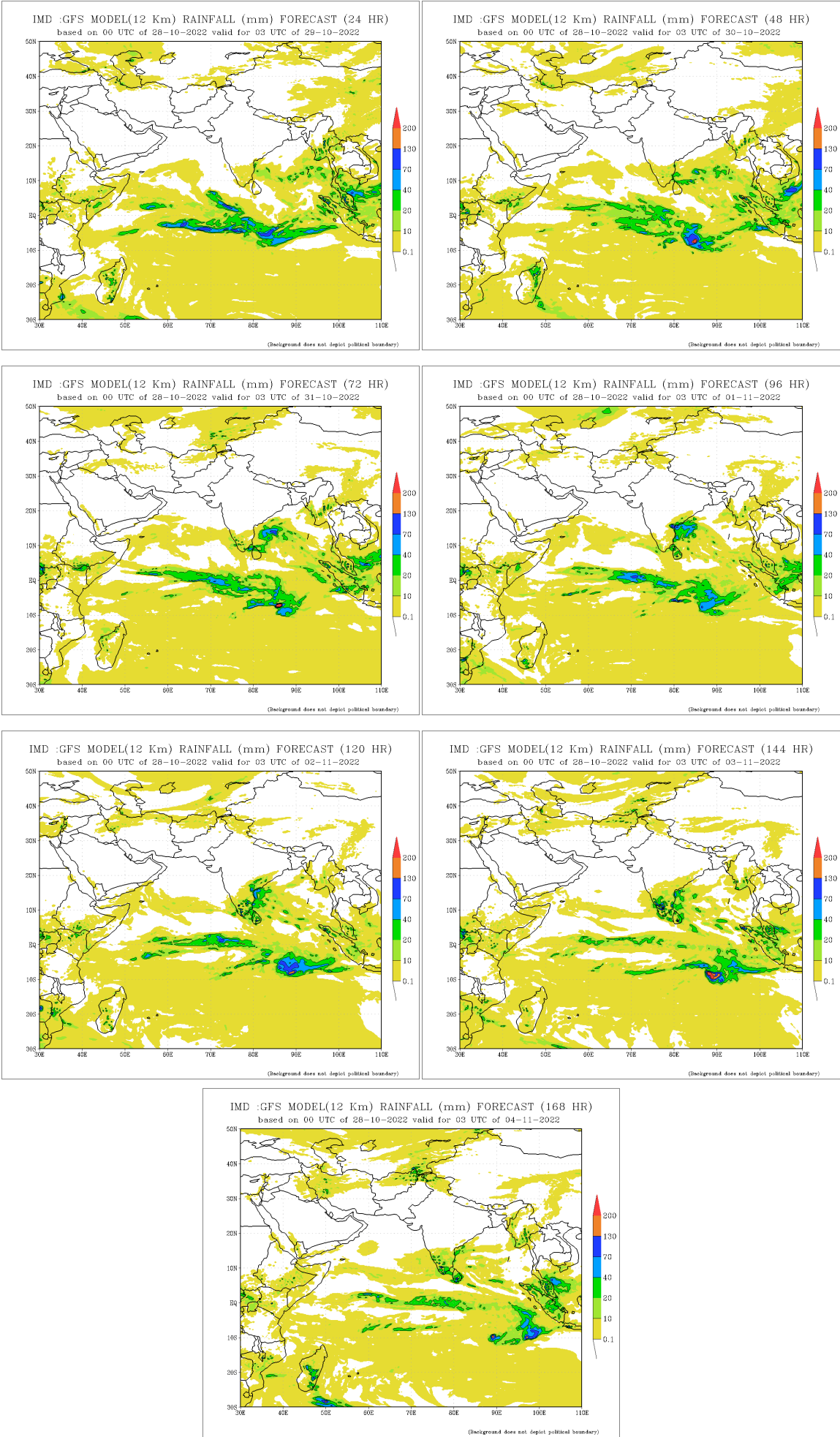


## Dekadal (10 Day) Satellite Derived Rainfall Estimates

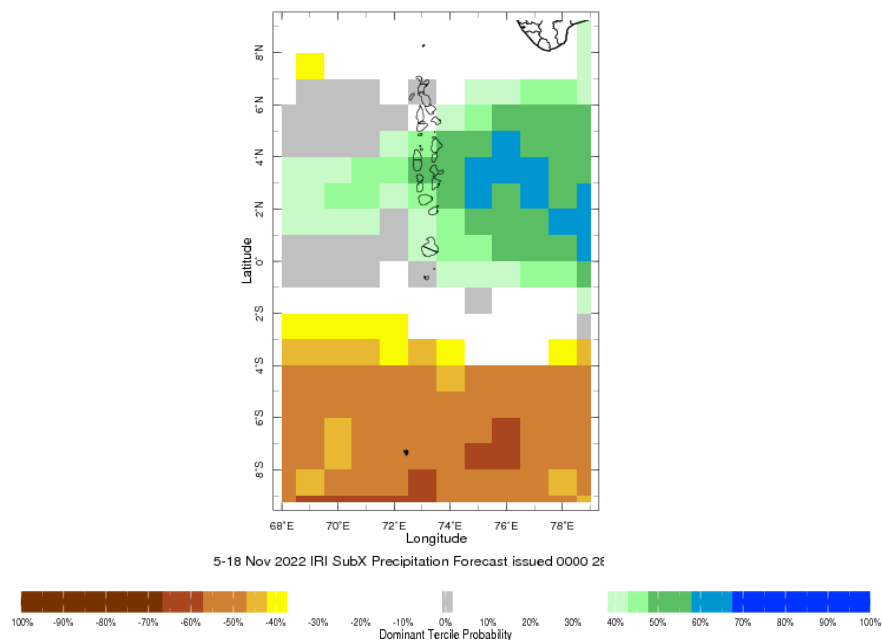


Daily Rainfall Forecast

Daily Rainfall forecasts (up to 7 days ahead) from the IMD is provided in figures below. These predictions are from the GFS (T1534) model covering the entire south Asian region.



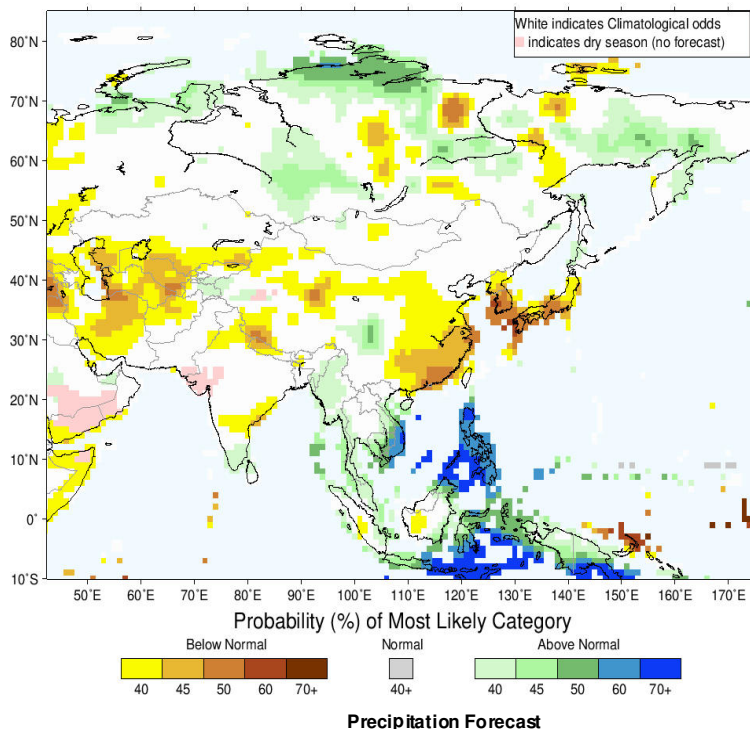
## Bi-weekly Precipitation Forecast



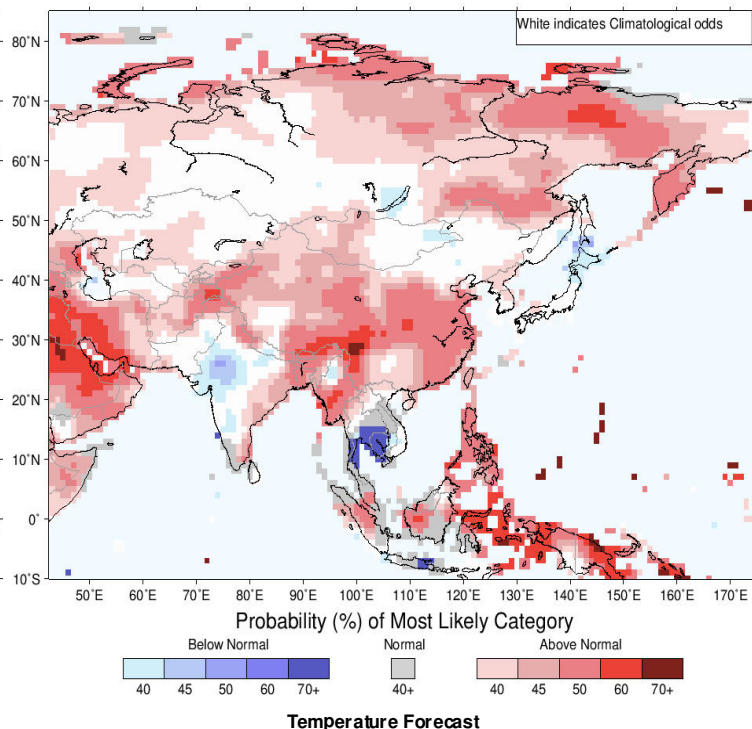
## Seasonal Rainfall and Temperature Forecast

Following is the latest seasonal precipitation and temperature prediction for the next 3 months by the IRI. The color shading indicates the probability of the most dominant tercile -- that is, the tercile having the highest forecast probability. The color bar alongside the map defines these dominant tercile probability levels. The upper side of the color bar shows the colors used for increasingly strong probabilities when the dominant tercile is the above-normal tercile, while the lower side shows likewise for the below-normal tercile. The gray color indicates an enhanced probability for the near-normal tercile (nearly always limited to 40%).

IRI Multi-Model Probability Forecast for Precipitation for November–December–January 2023, Issued October 2022



IRI Multi-Model Probability Forecast for Temperature for November–December–January 2023, Issued October 2022



Subscribe to our Monthly Maldives Newsletter

email address

Subscribe

Follow @fectmv

Contact Us  
email: [fectmv@gmail.com](mailto:fectmv@gmail.com)  
phone: (+96) 07 788010  
blog: [www.fectmv.blogspot.com](http://www.fectmv.blogspot.com)

Foundation for Environment, Climate & Technology,  
REM, Madhrasaadhoshuge,  
Henveiru, Hadheebee Magu,  
Male', 20184,  
Maldives