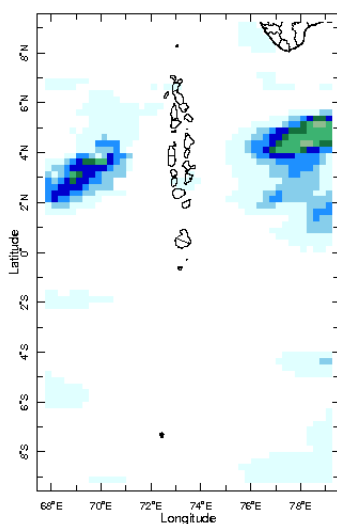


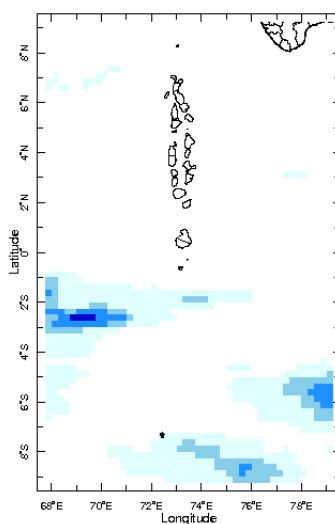


Daily Rainfall Monitoring

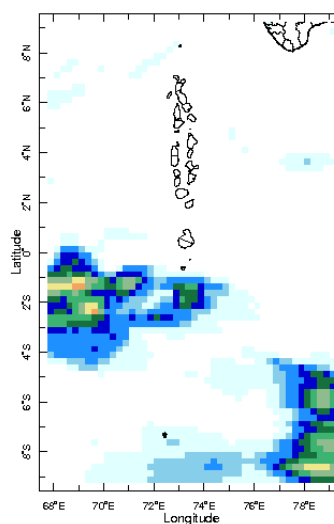
The following figures show the observed rainfall in the last 15 days in Maldives.



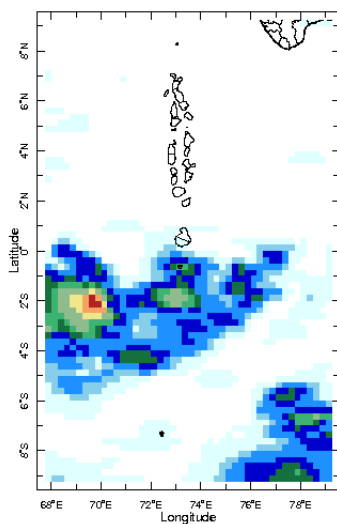
11 Aug 2020



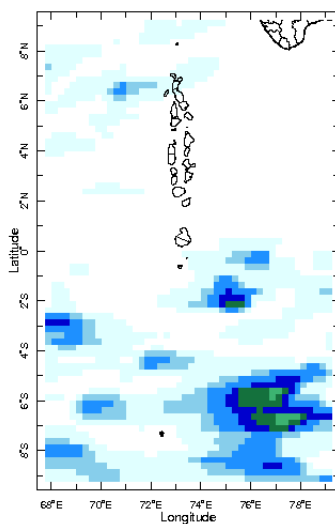
12 Aug 2020



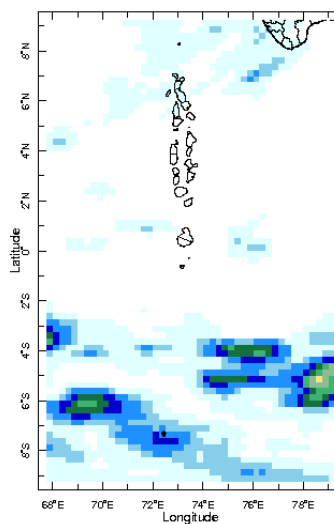
13 Aug 2020



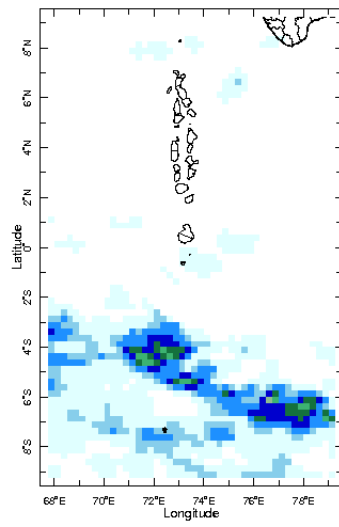
14 Aug 2020



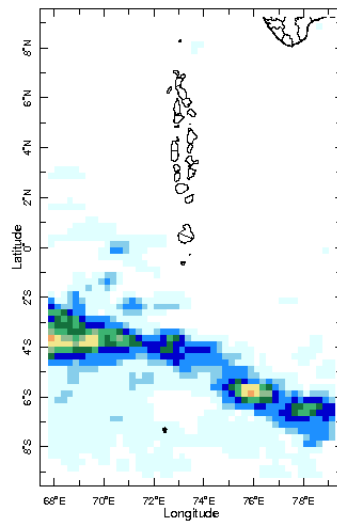
15 Aug 2020



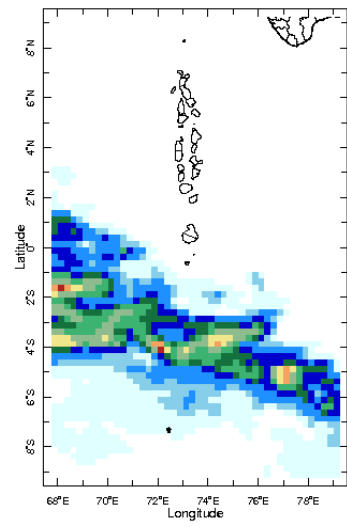
16 Aug 2020



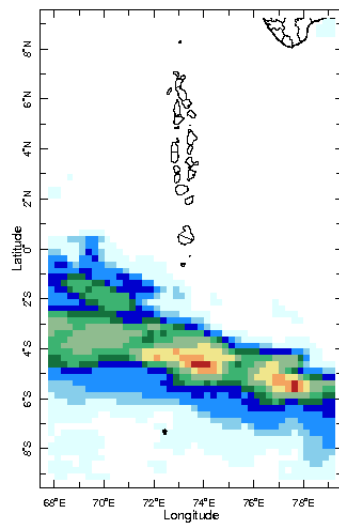
17 Aug 2020



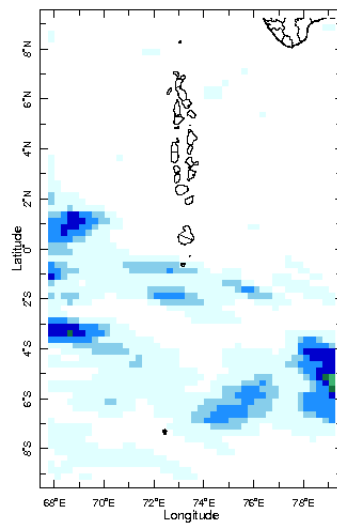
18 Aug 2020



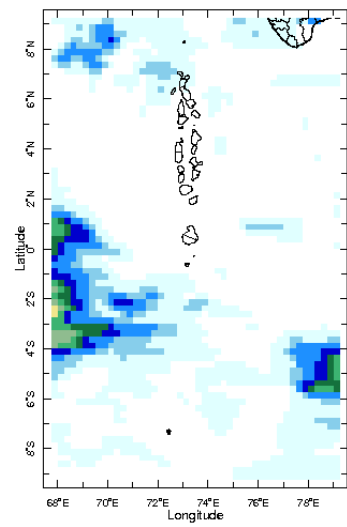
19 Aug 2020



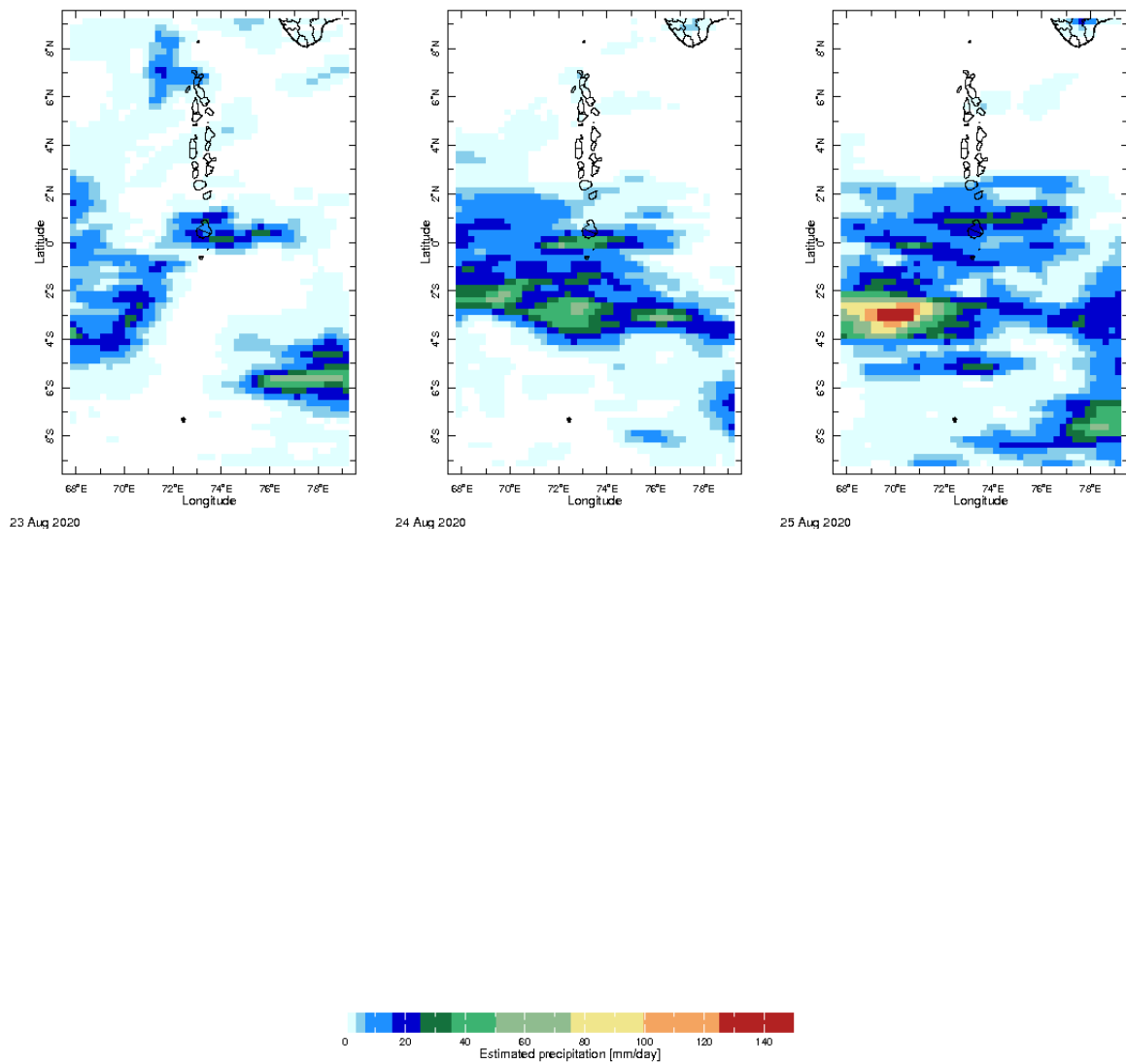
20 Aug 2020



21 Aug 2020

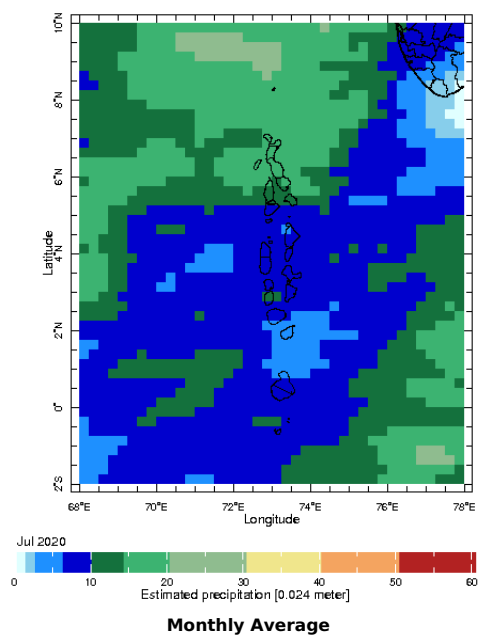


22 Aug 2020



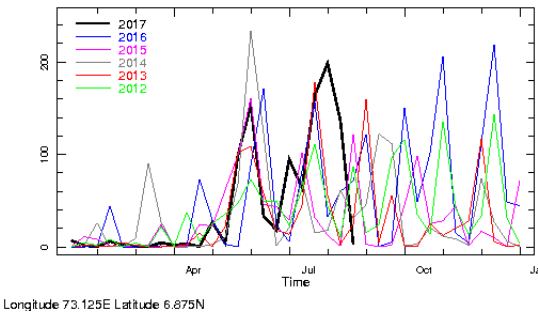
Monthly Rainfall Monitoring

The figure shows the average observed rainfall in the previous month.

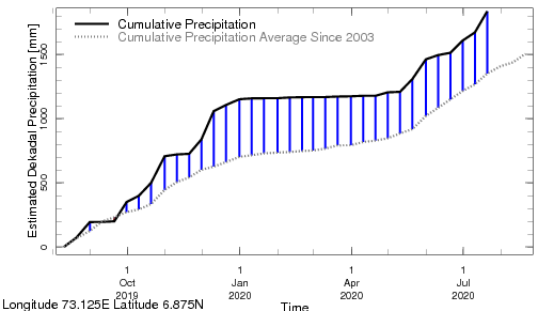


Monthly and Seasonal Monitoring

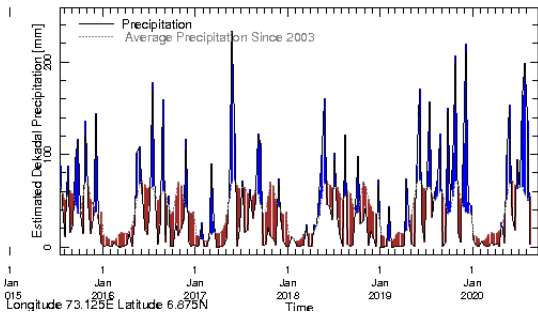
Northern Maldives:



Rainfall in the current year (black) compared to rainfall in previous 5 years

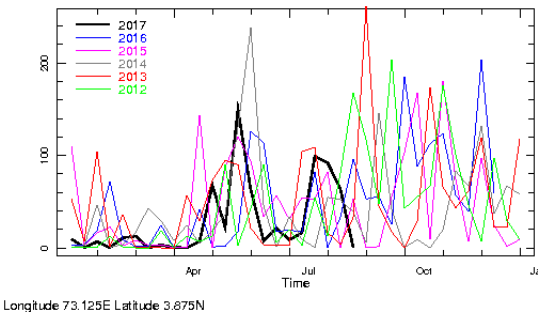


Rainfall of past 365 days (black) compared to average rainfall since 2003.

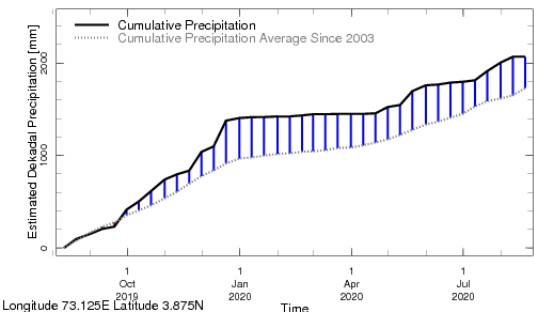


Rainfall in the past 5 years with above-average rainfall hatched in blue and below-average hatched in brown

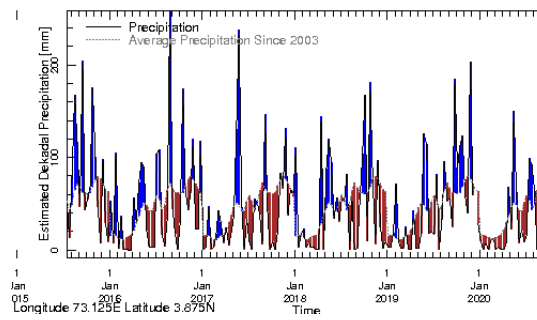
Central Maldives:



Rainfall in the current year (black) compared to rainfall in previous 5 years

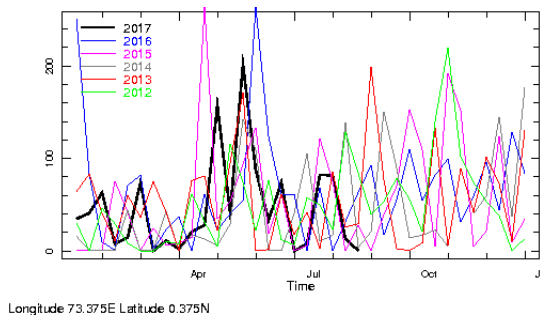


Rainfall of past 365 days (black) compared to average rainfall since 2003.

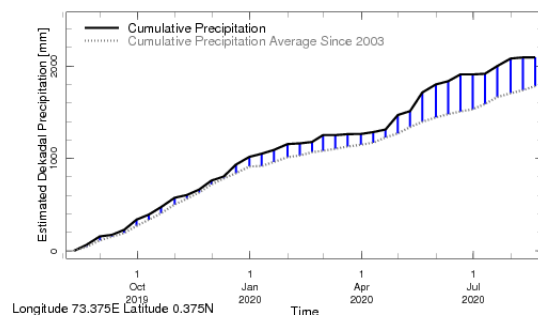


Rainfall in the past 5 years with above-average rainfall hatched in blue and below-average hatched in brown

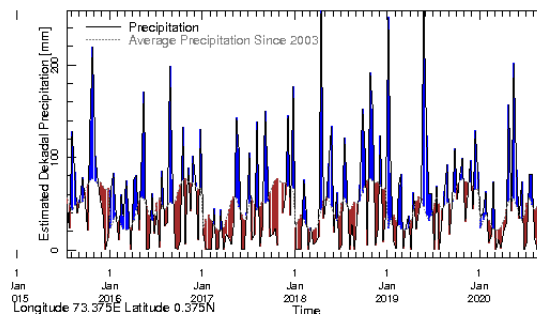
Southern Maldives:



Rainfall in the current year (black) compared to rainfall in previous 5 years

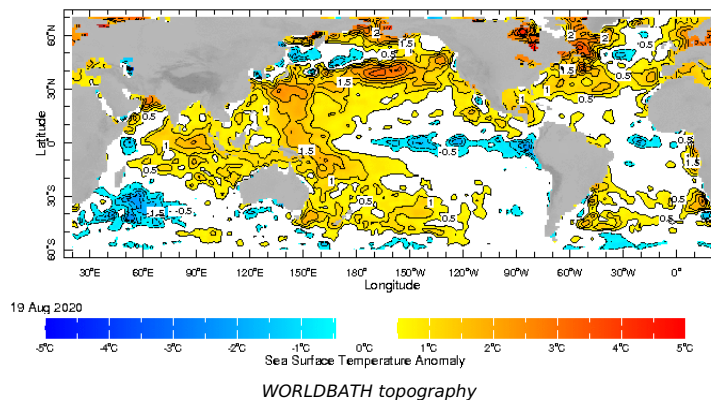


Rainfall of past 365 days (black) compared to average rainfall since 2003.



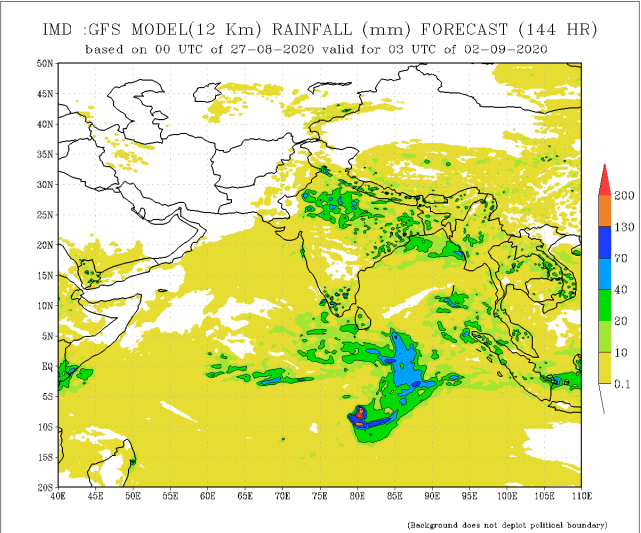
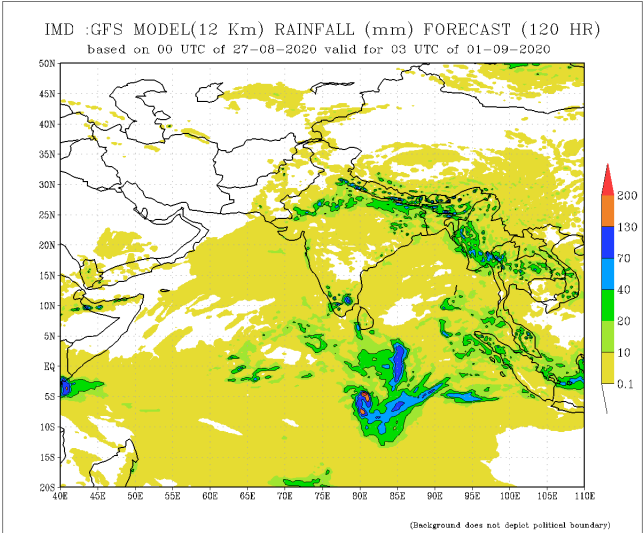
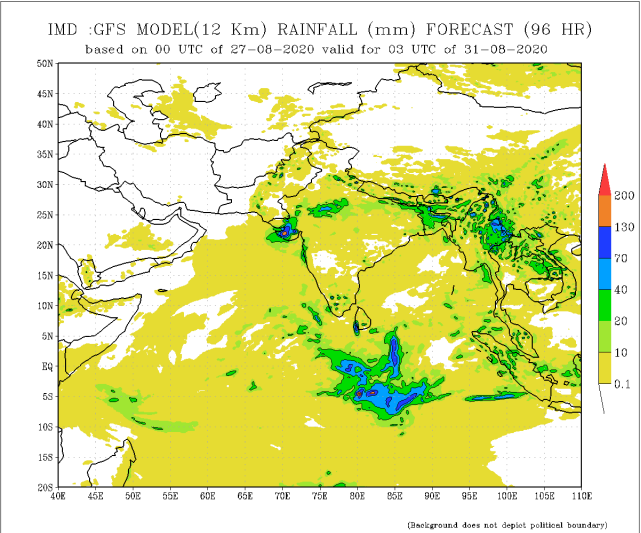
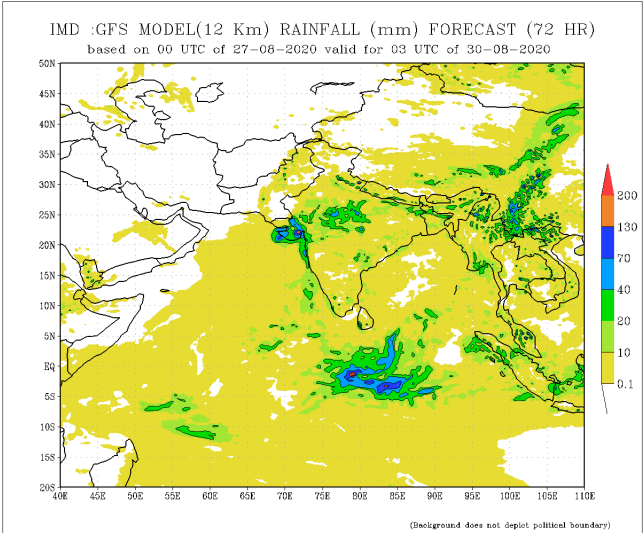
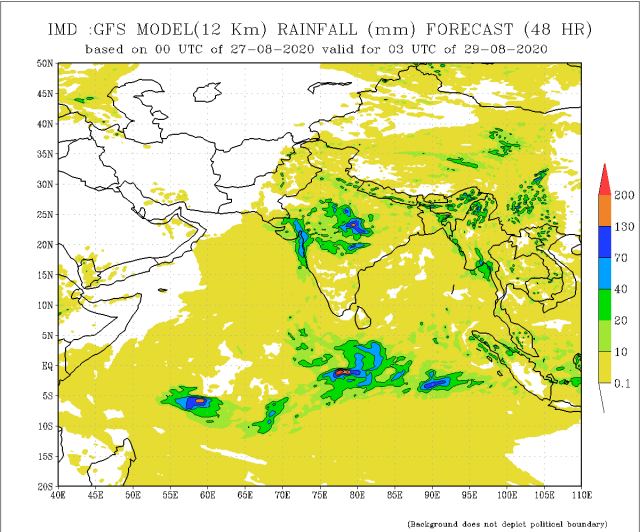
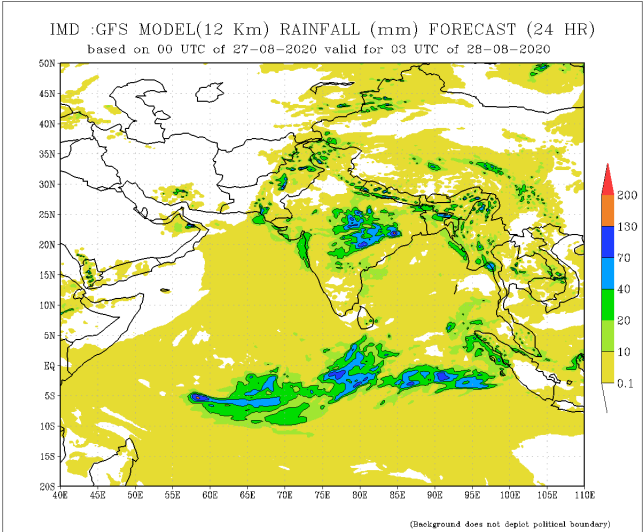
Rainfall in the past 5 years with above-average rainfall hatched in blue and below-average hatched in brown

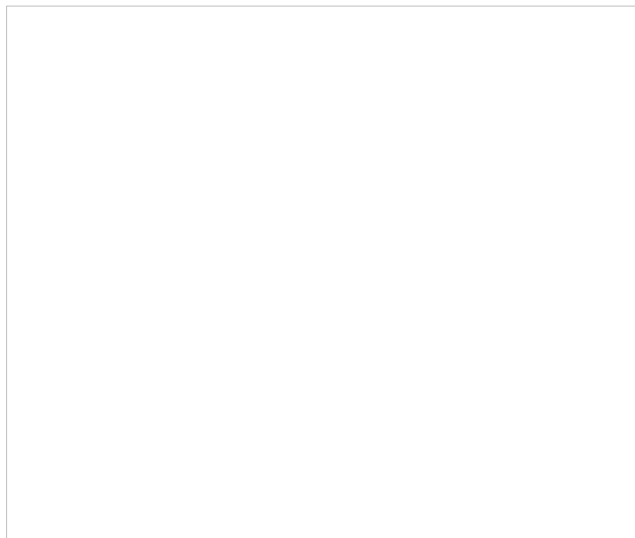
Ocean Surface Monitoring



Daily Rainfall Forecast

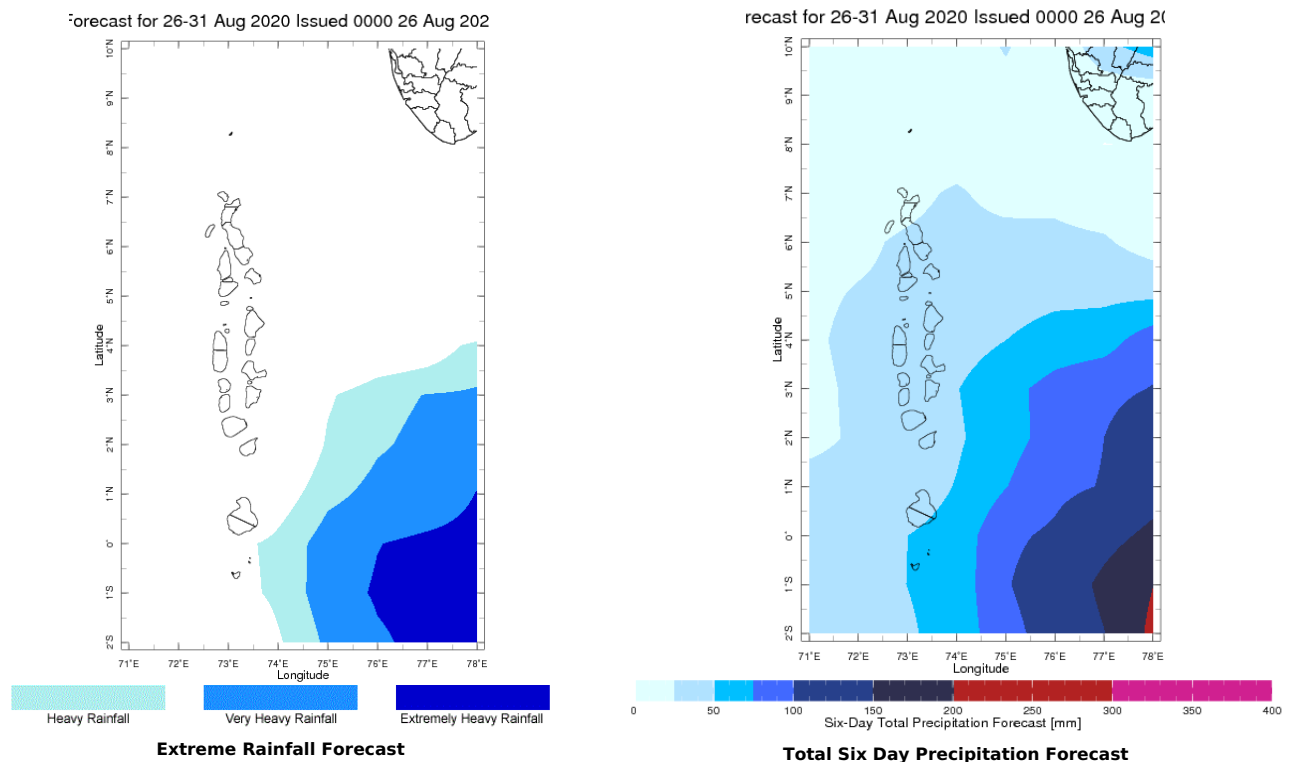
Daily Rainfall forecasts (up to 7 days ahead) from the IMD is provided in figures below. These predictions are from the GFS (T1534) model covering the entire south Asian region.





Weekly Rainfall Forecast

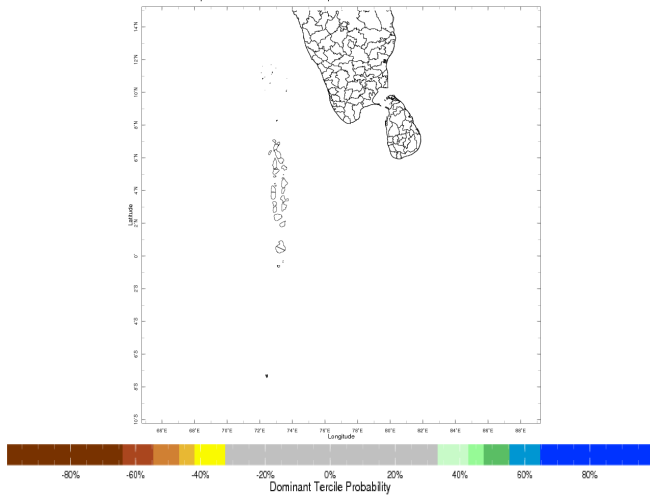
Total rainfall forecast from the IRI for next six days is provided in figures below. The figure to the left shows the expectancy of heavy rainfall events during these six days while the figure to the right is the prediction of total rainfall amount during this period.



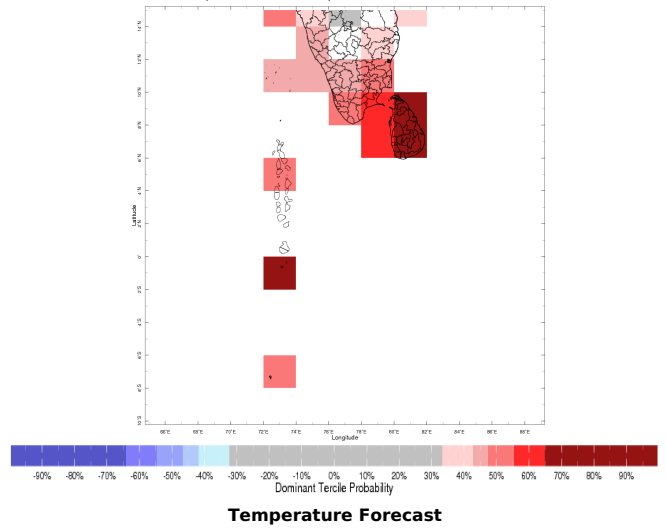
Seasonal Rainfall and Temperature Forecast

Following is the latest seasonal precipitation and temperature prediction for the next 3 months by the IRI. The color shading indicates the probability of the most dominant tercile -- that is, the tercile having the highest forecast probability. The color bar alongside the map defines these dominant tercile probability levels. The upper side of the color bar shows the colors used for increasingly strong probabilities when the dominant tercile is the above-normal tercile, while the lower side shows likewise for the below-normal tercile. The gray color indicates an enhanced probability for the near-normal tercile (nearly always limited to 40%).

Apr-Jun 2017 IRI Seasonal Precipitation Forecast issued Mar 2017



Apr-Jun 2017 IRI Seasonal Temperature Forecast issued Mar 2017



Subscribe to our Monthly Maldives Newsletter

email address

Subscribe

[Follow @fectmv](#)

Contact Us

email: fectmv@gmail.com

phone: (+94) 81 2376746

blog: www.fectmv.blogspot.com

Foundation for Environment, Climate & Technology
C/O Mahaweli Authority of Sri Lanka,
Digana Village,
Rajawella,
SRI LANKA