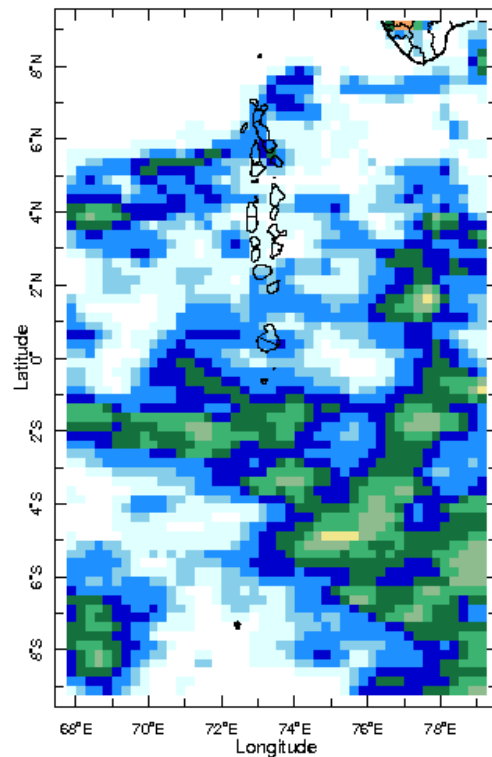
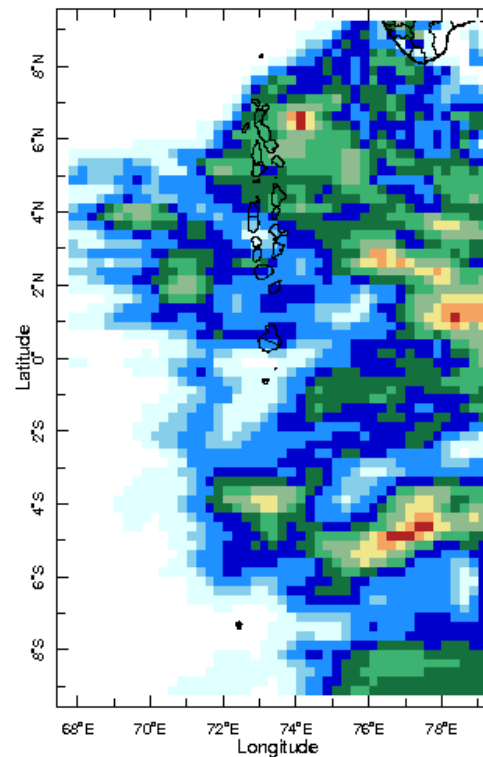


Daily Rainfall Monitoring

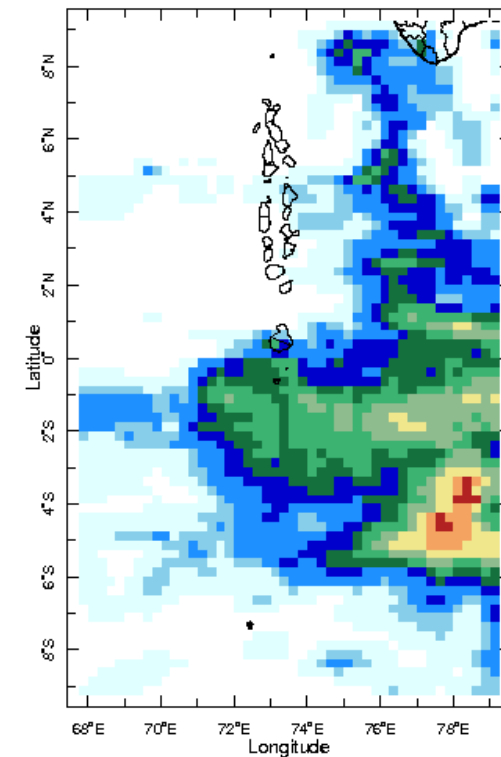
The following figures show the observed rainfall in the last 15 days in Maldives.



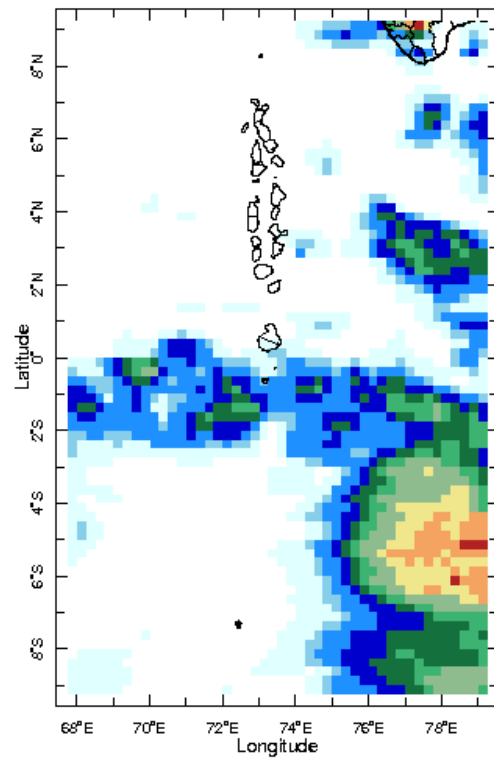
19 Apr 2019



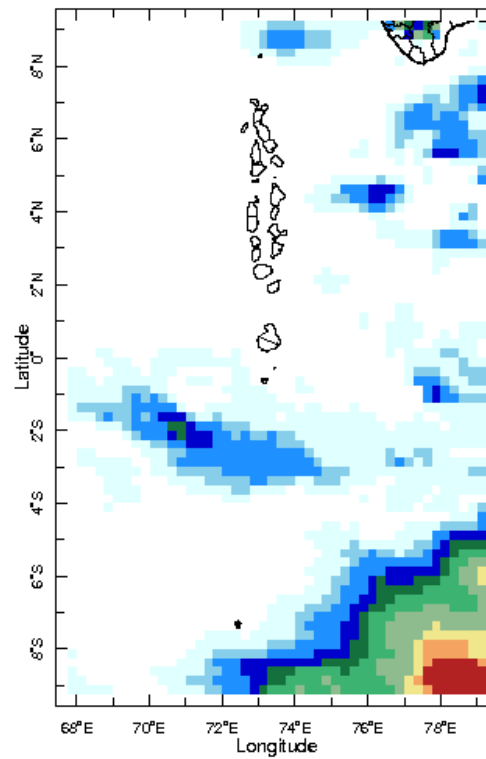
20 Apr 2019



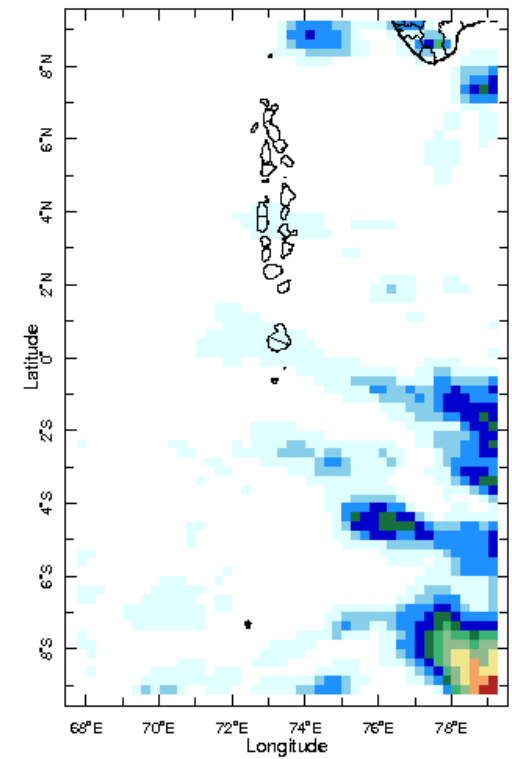
21 Apr 2019



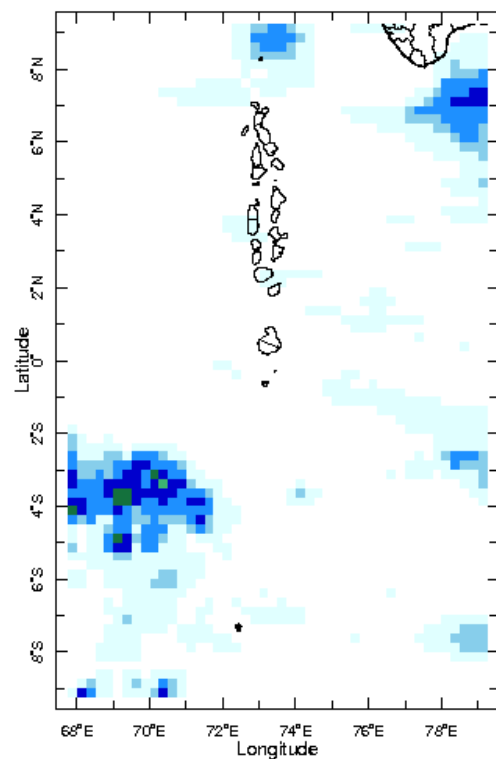
22 Apr 2019



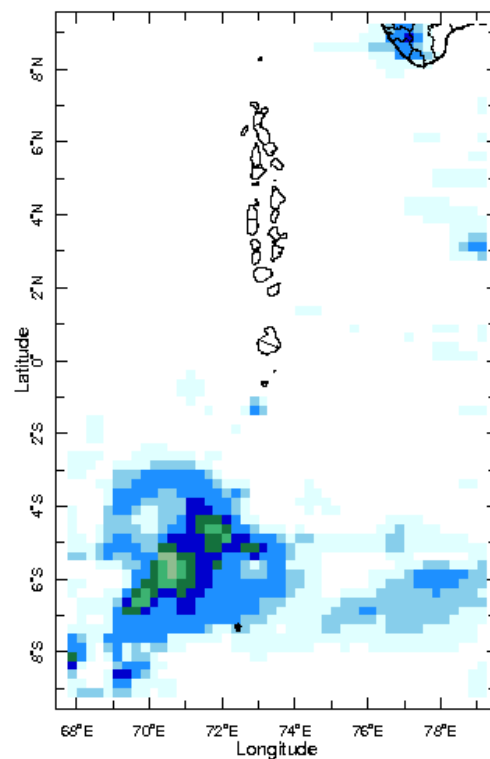
23 Apr 2019



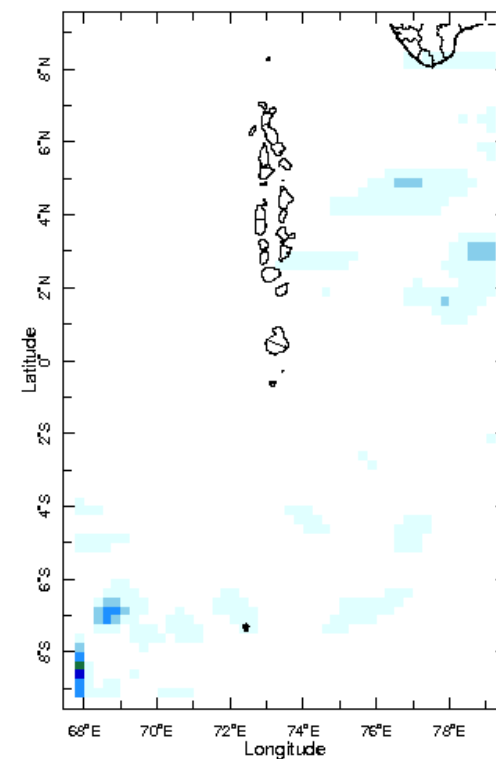
24 Apr 2019



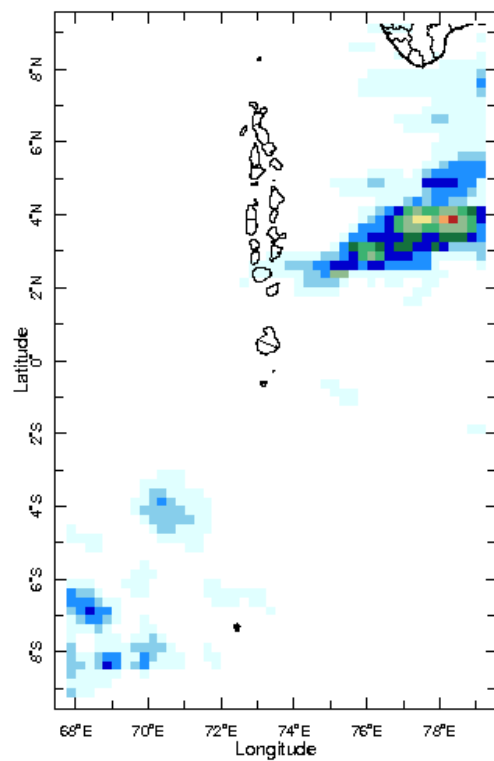
25 Apr 2019



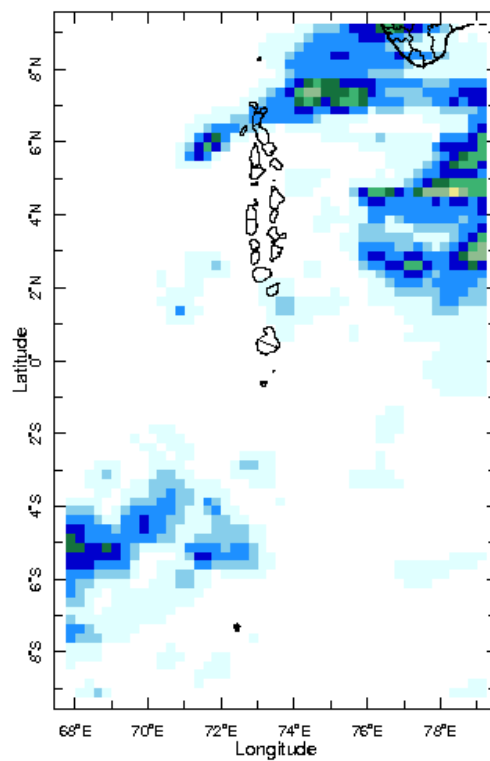
26 Apr 2019



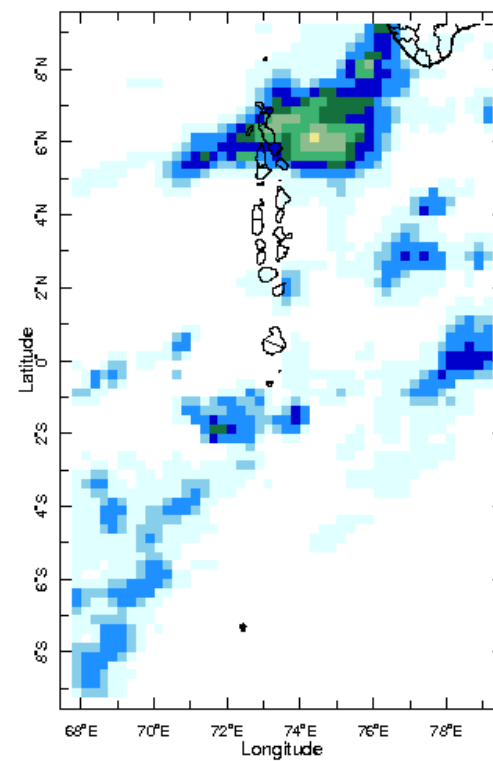
27 Apr 2019



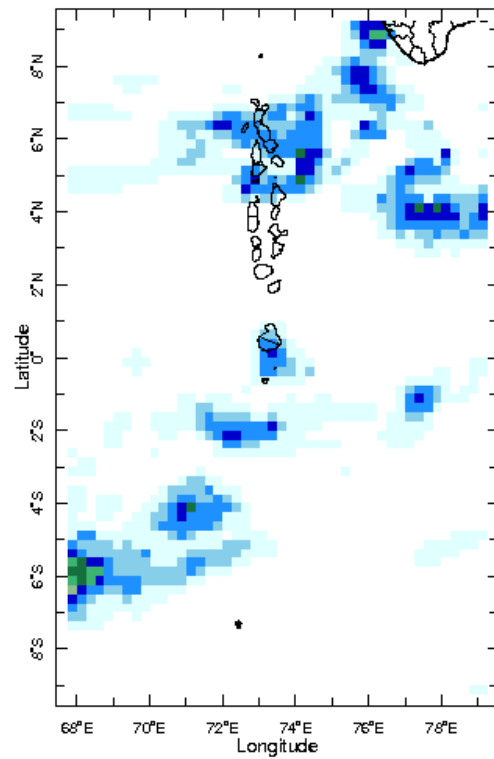
28 Apr 2019



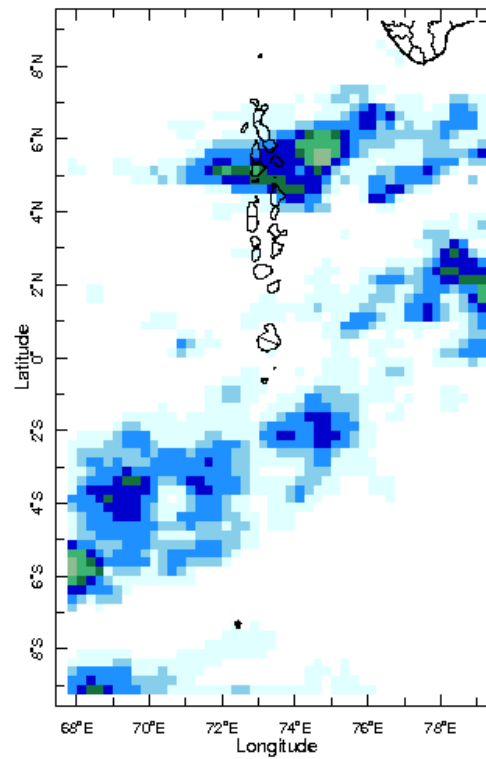
29 Apr 2019



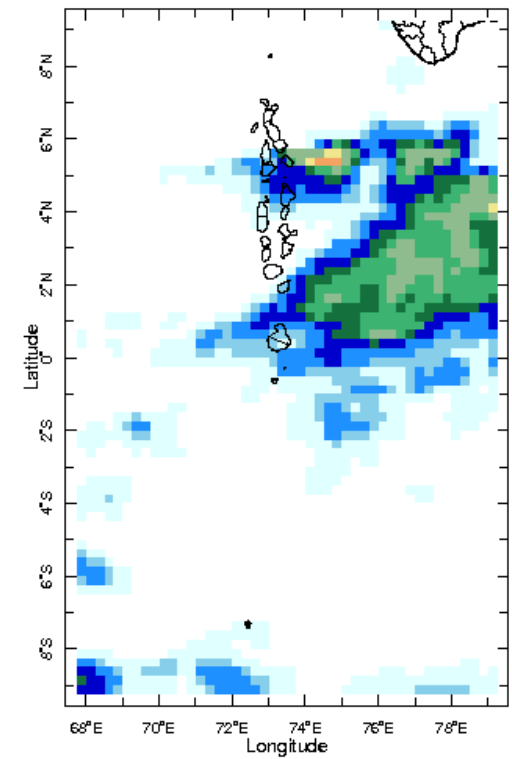
30 Apr 2019



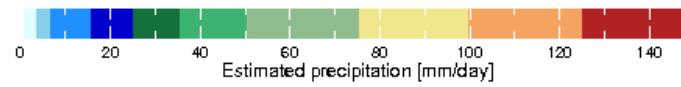
1 May 2019

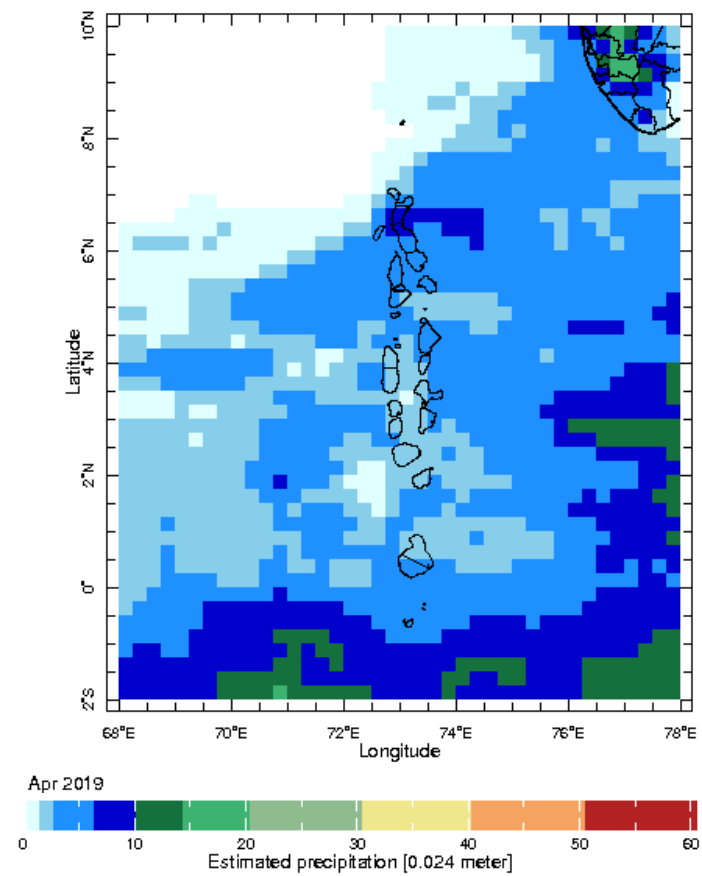


2 May 2019



3 May 2019

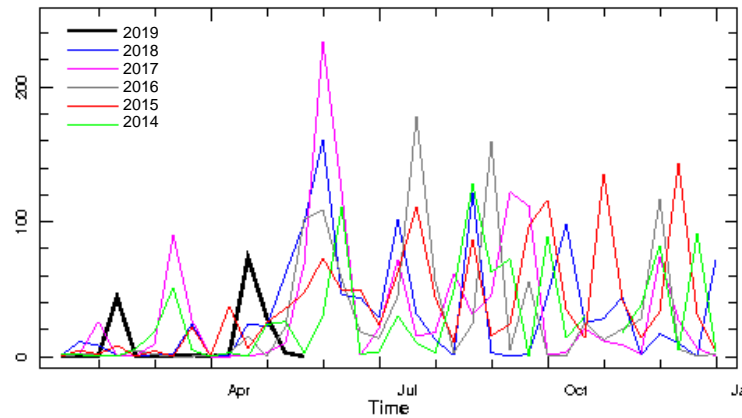




Monthly Average

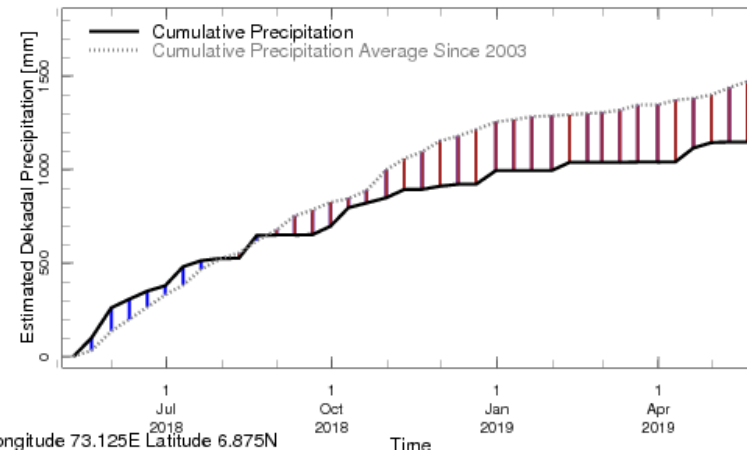
Monthly and Seasonal Monitoring

Northern Maldives:



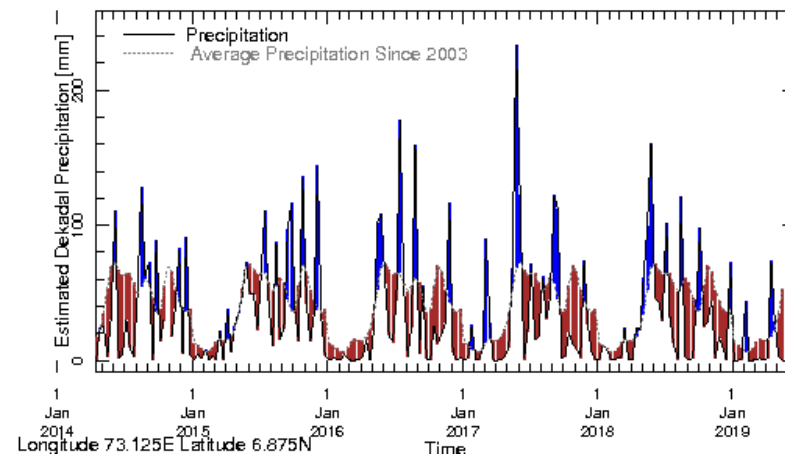
Longitude 73.125E Latitude 6.875N

Rainfall in the current year (black) compared to rainfall in previous 5 years



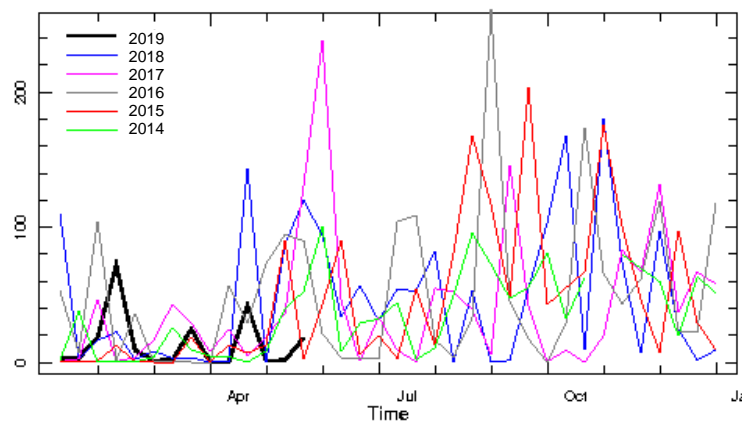
Longitude 73.125E Latitude 6.875N

Rainfall of past 365 days (black) compared to average rainfall since 2003.

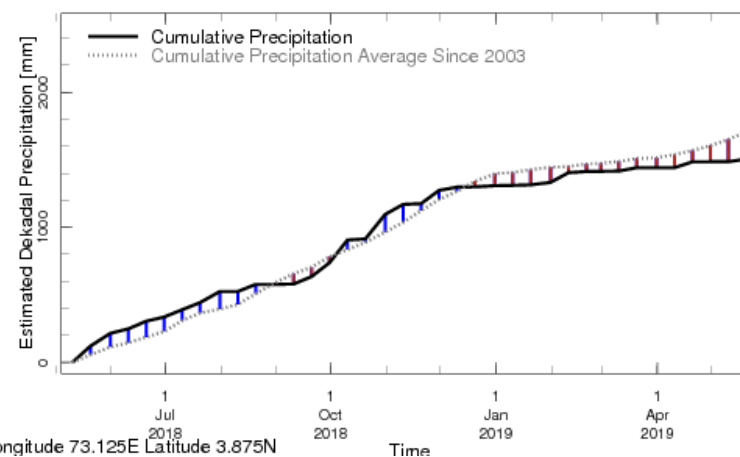


Rainfall in the past 5 years with above-average rainfall hatched in blue and below-average hatched in brown

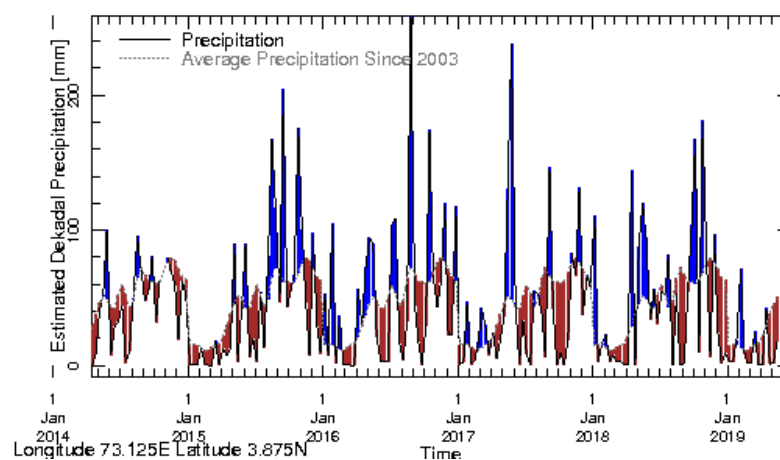
Central Maldives:



Rainfall in the current year (black) compared to rainfall in previous 5 years

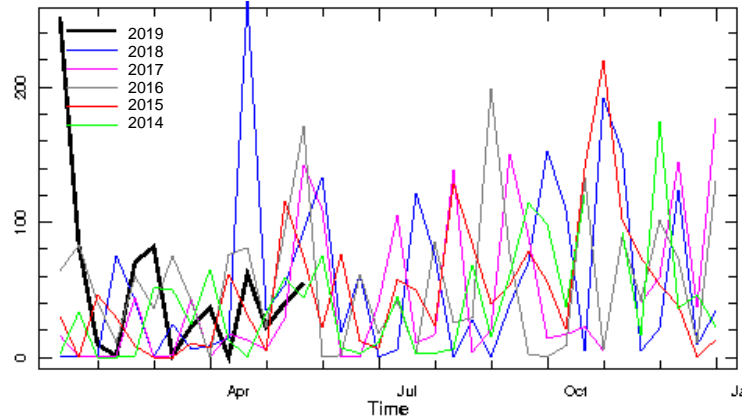


Rainfall of past 365 days (black) compared to average rainfall since 2003.



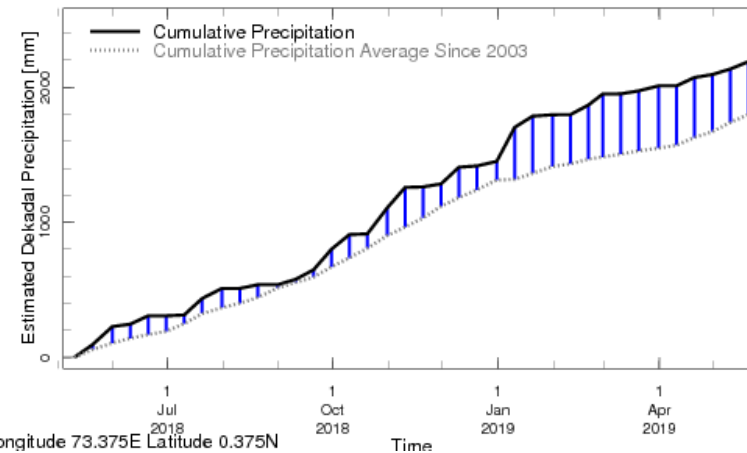
Rainfall in the past 5 years with above-average rainfall hatched in blue and below-average hatched in brown

Southern Maldives:



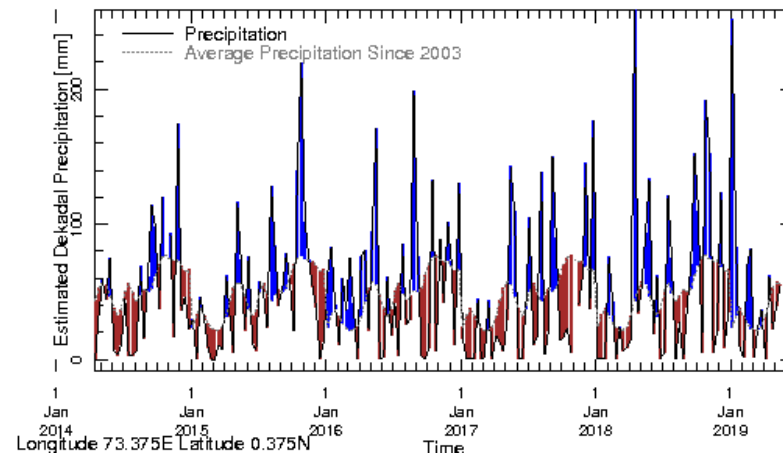
Longitude 73.375E Latitude 0.375N

Rainfall in the current year (black) compared to rainfall in previous 5 years



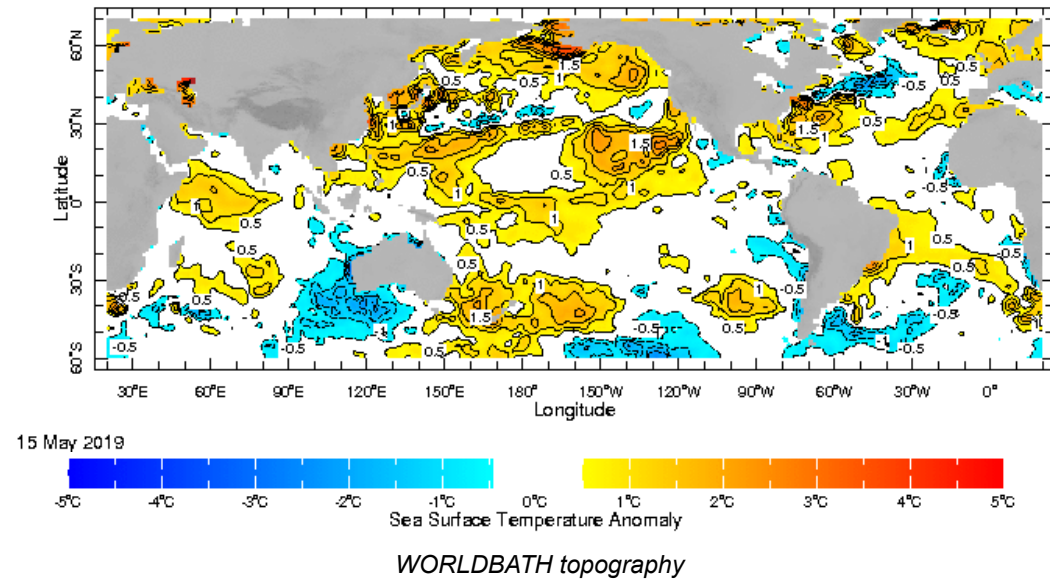
Longitude 73.375E Latitude 0.375N

Rainfall of past 365 days (black) compared to average rainfall since 2003.



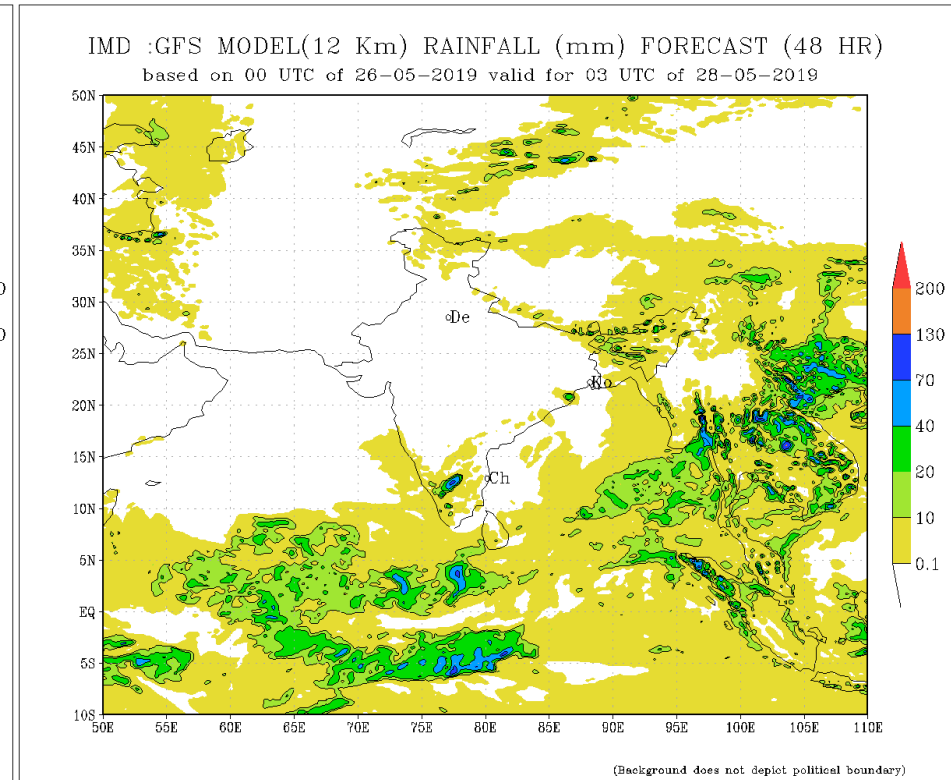
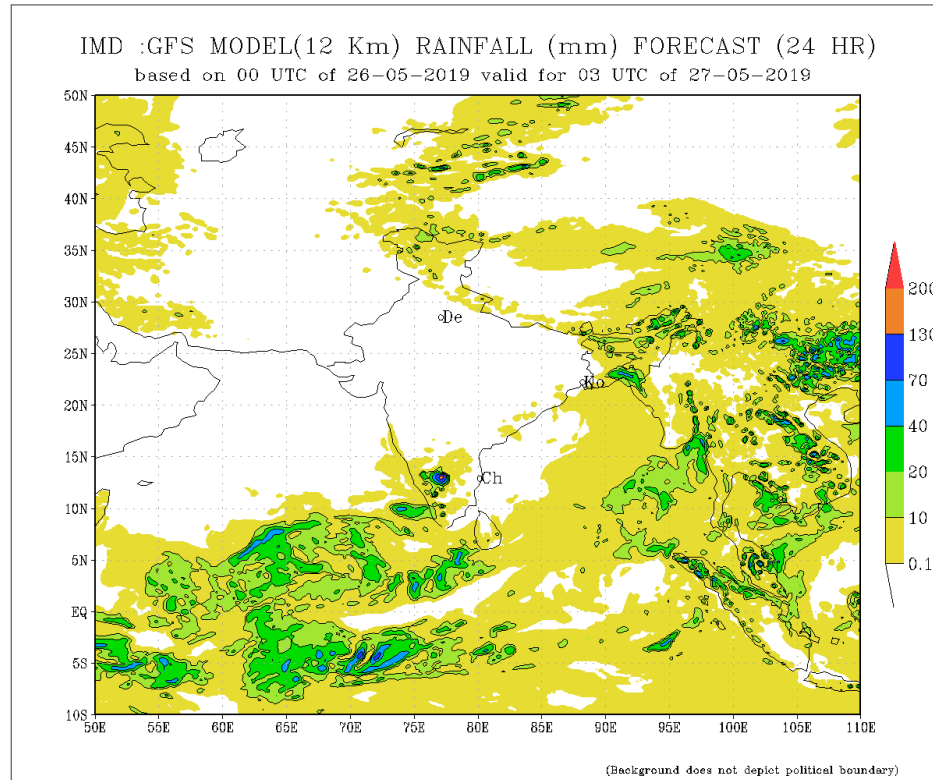
Rainfall in the past 5 years with above-average rainfall hatched in blue and below-average hatched in brown

Ocean Surface Monitoring



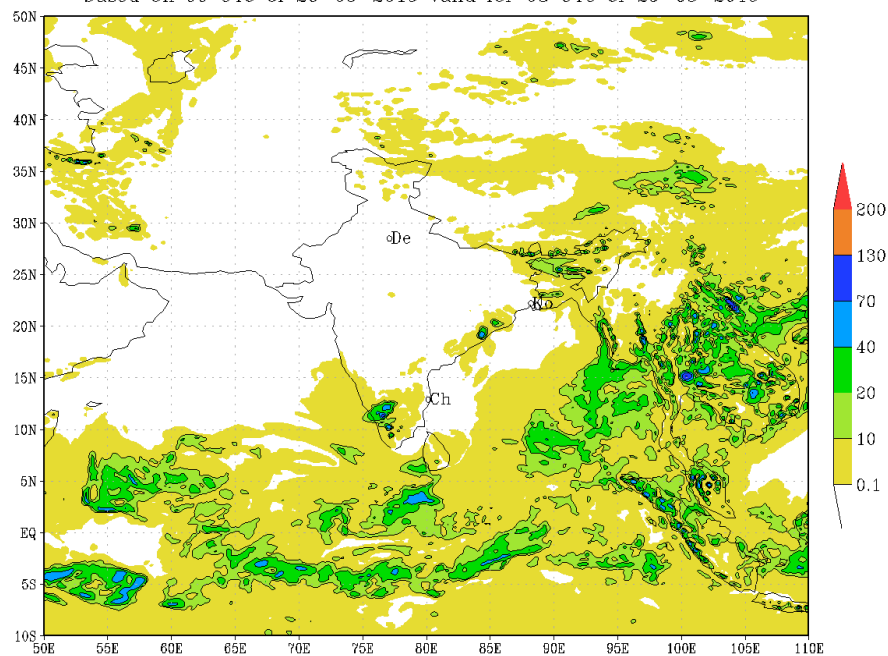
Daily Rainfall Forecast

Daily Rainfall forecasts (up to 7 days ahead) from the IMD is provided in figures below. These predictions are from the GFS (T1534) model covering the entire south Asian region.



IMD :GFS MODEL(12 Km) RAINFALL (mm) FORECAST (72 HR)

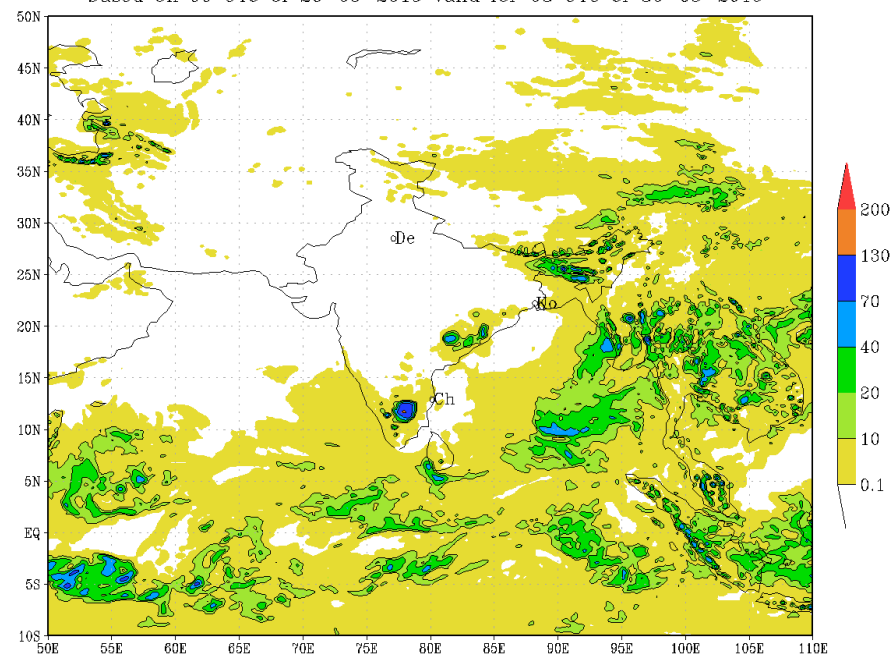
based on 00 UTC of 26-05-2019 valid for 03 UTC of 29-05-2019



(Background does not depict political boundary)

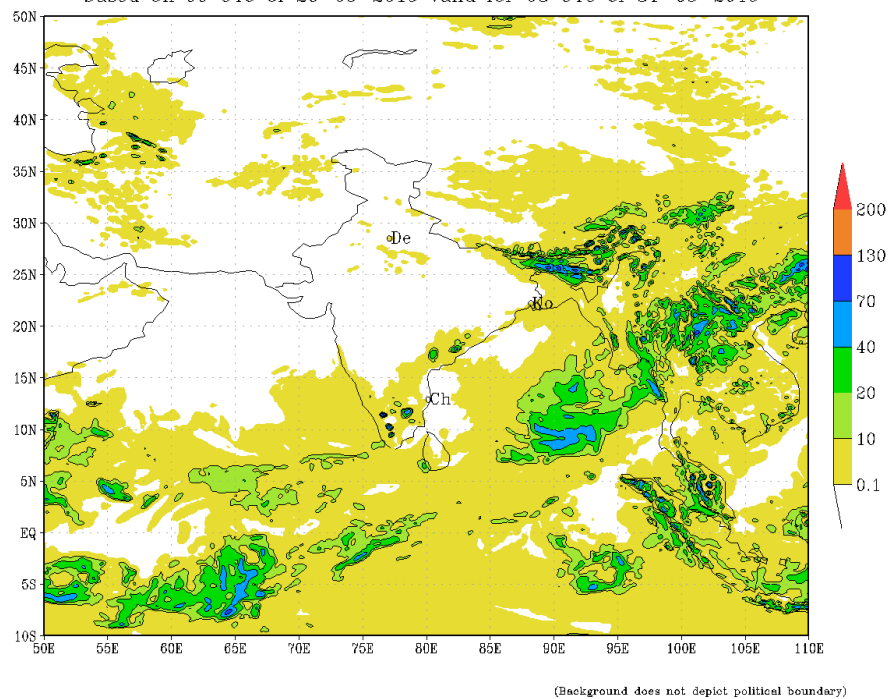
IMD :GFS MODEL(12 Km) RAINFALL (mm) FORECAST (96 HR)

based on 00 UTC of 26-05-2019 valid for 03 UTC of 30-05-2019

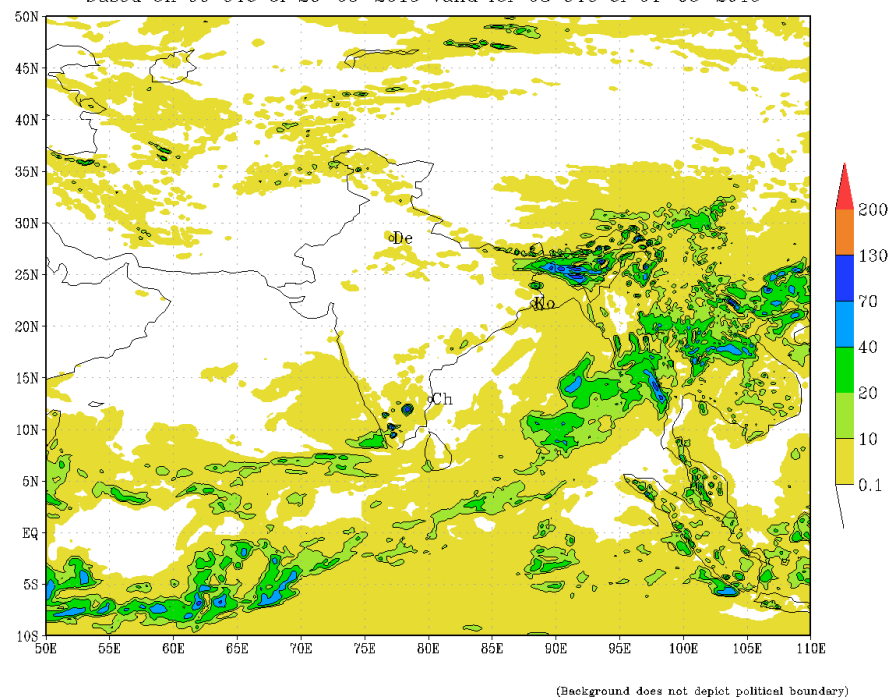


(Background does not depict political boundary)

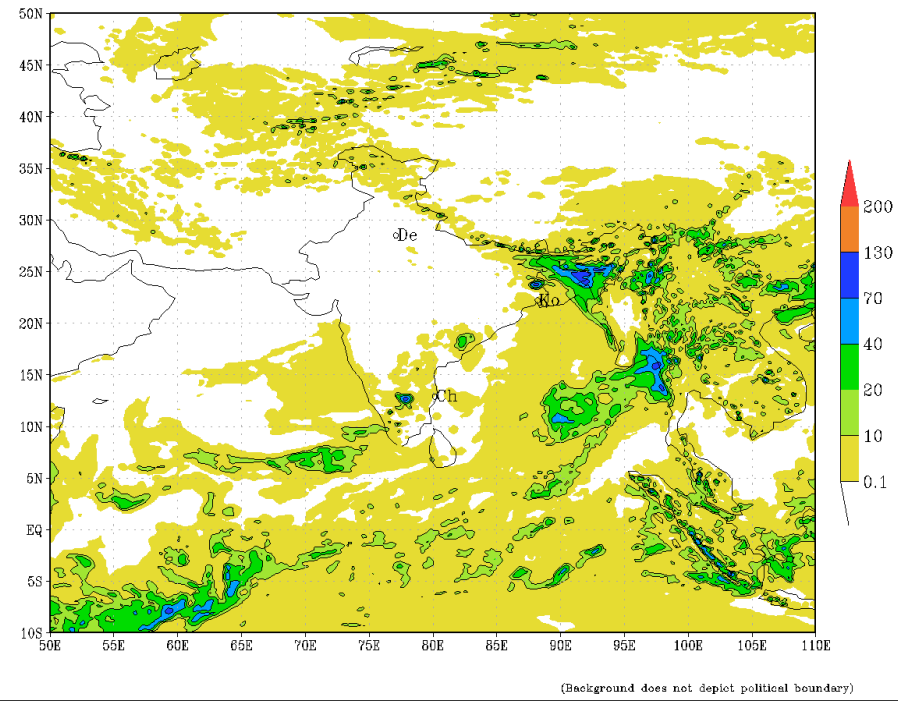
IMD :GFS MODEL(12 Km) RAINFALL (mm) FORECAST (120 HR)
based on 00 UTC of 26-05-2019 valid for 03 UTC of 31-05-2019



IMD :GFS MODEL(12 Km) RAINFALL (mm) FORECAST (144 HR)
based on 00 UTC of 26-05-2019 valid for 03 UTC of 01-06-2019



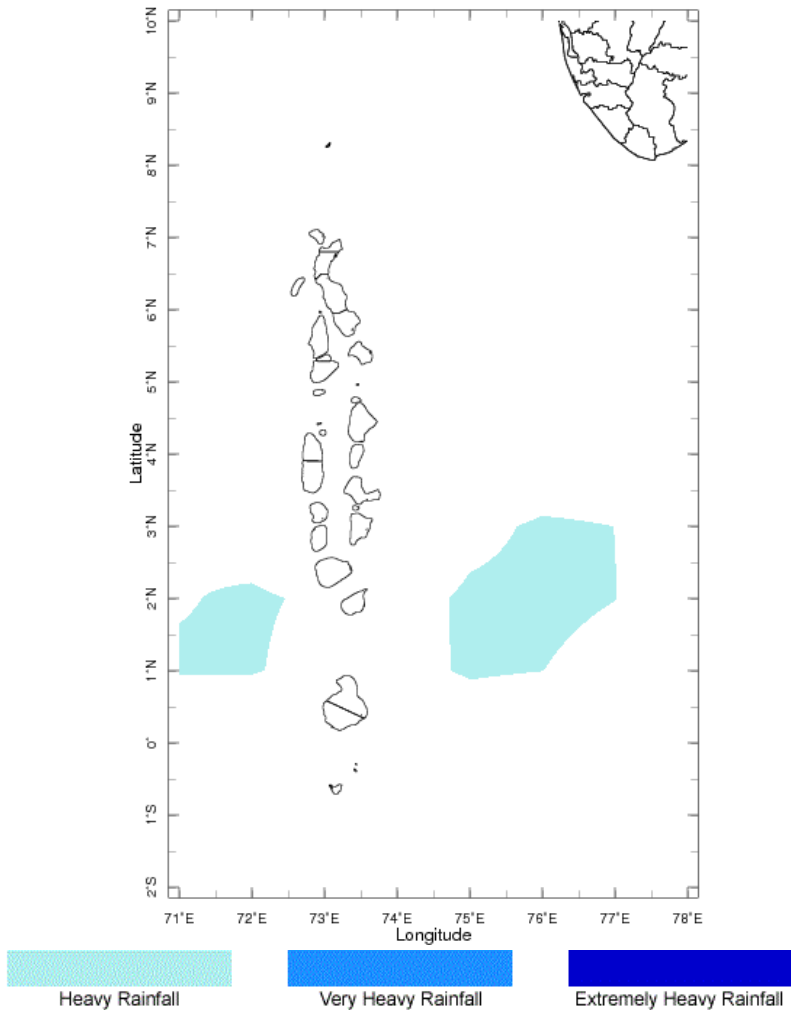
IMD :GFS MODEL(12 Km) RAINFALL (mm) FORECAST (168 HR)
based on 00 UTC of 26-05-2019 valid for 03 UTC of 02-06-2019



Weekly Rainfall Forecast

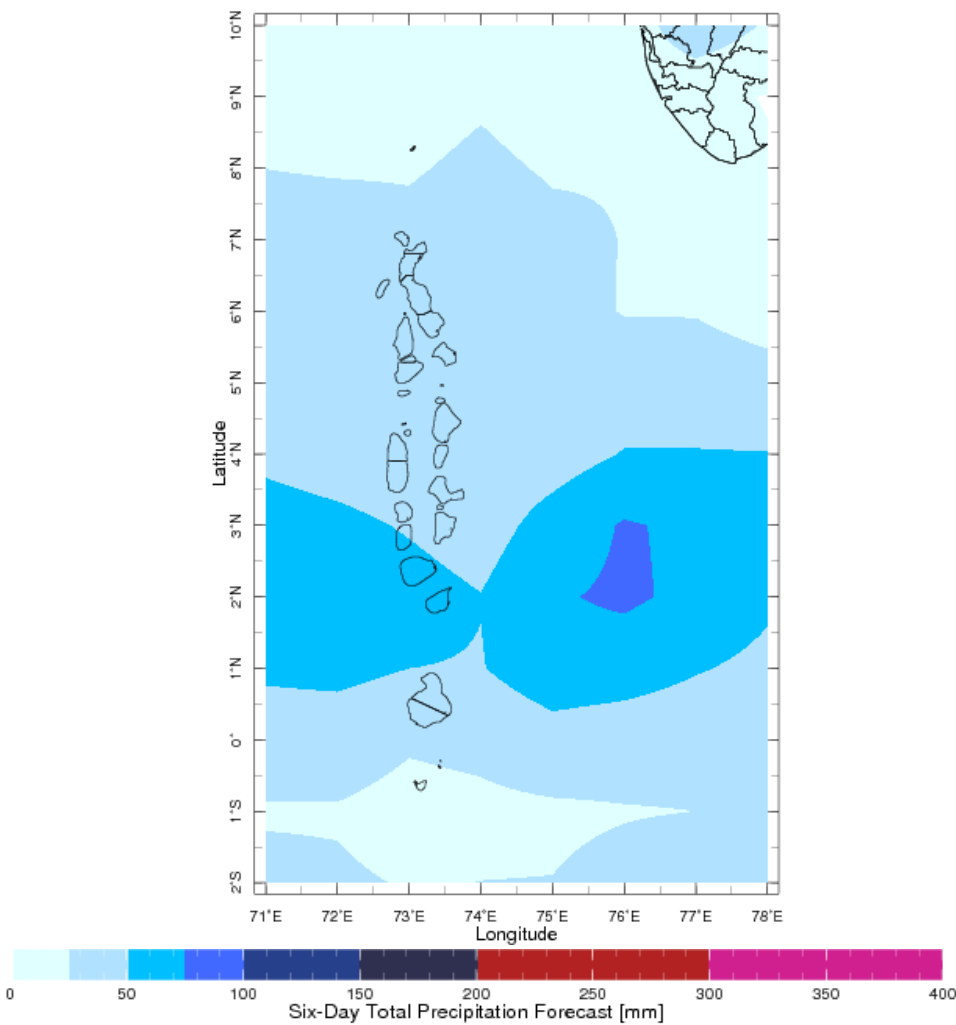
Total rainfall forecast from the IRI for next six days is provided in figures below. The figure to the left shows the expectancy of heavy rainfall events during these six days while the figure to the right is the prediction of total rainfall amount during this period.

Forecast for 25-30 May 2019 Issued 0000 25 May 2019



Extreme Rainfall Forecast

Forecast for 25-30 May 2019 Issued 0000 25 May 2019



Total Six Day Precipitation Forecast