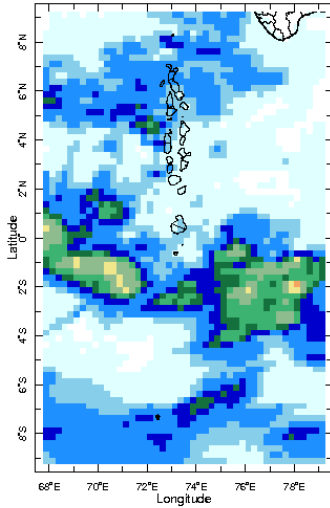


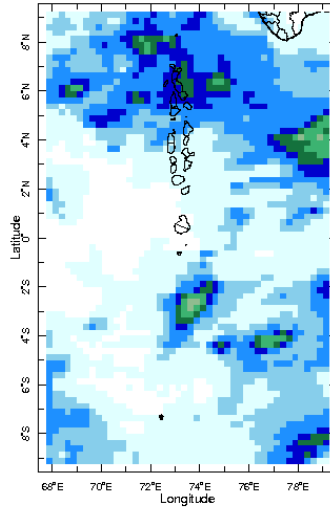


Daily Rainfall Monitoring

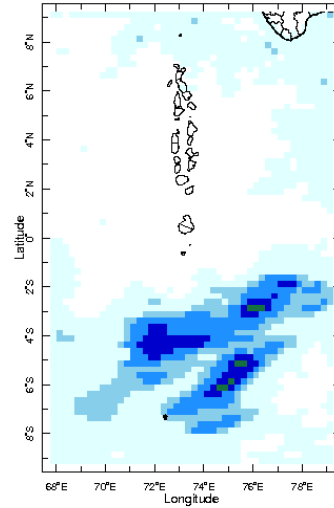
The following figures show the observed rainfall in the last 15 days in Maldives.



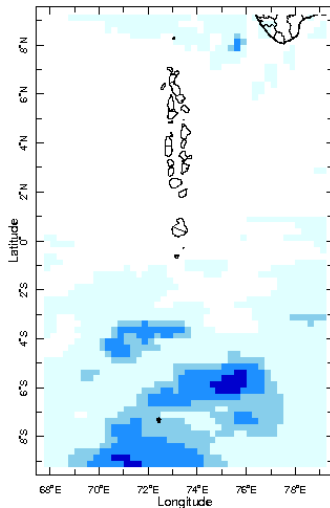
9 Jul 2022



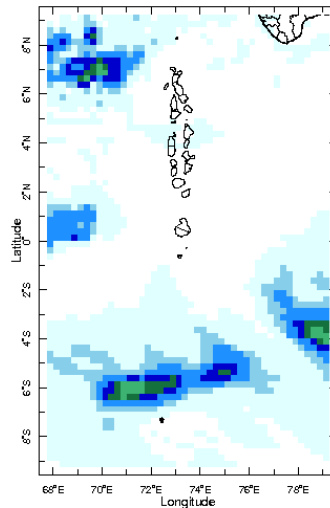
10 Jul 2022



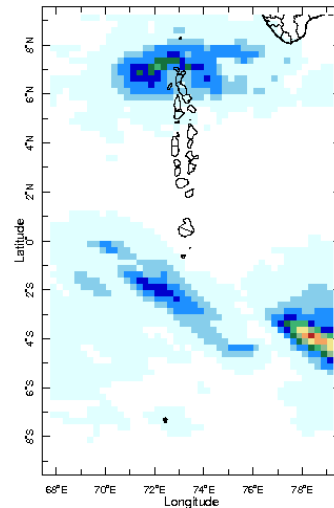
11 Jul 2022



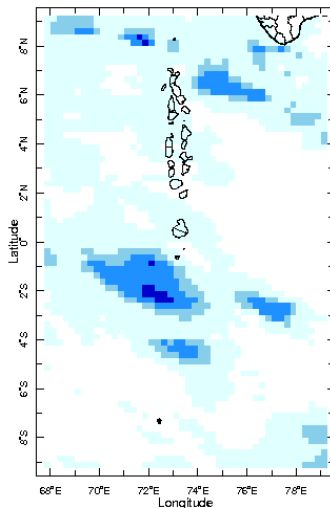
12 Jul 2022



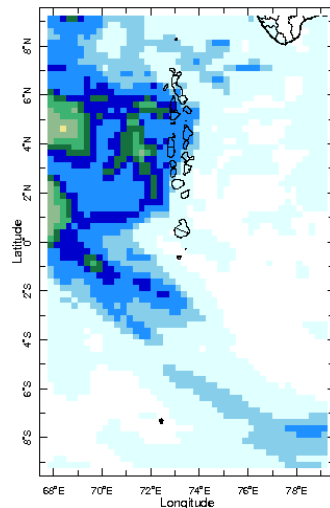
13 Jul 2022



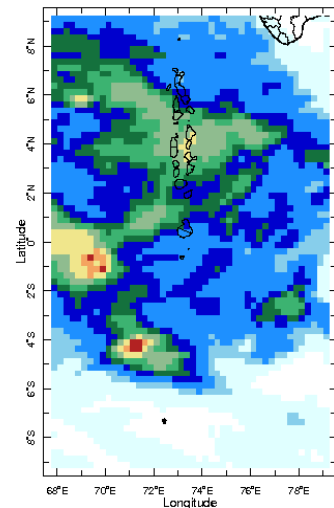
14 Jul 2022



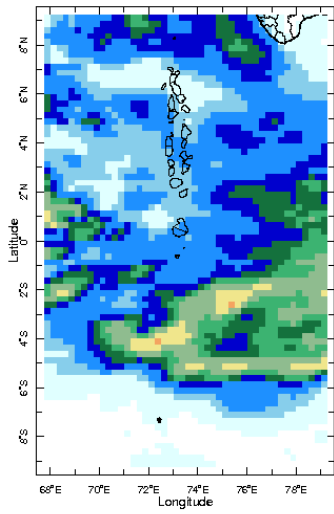
15 Jul 2022



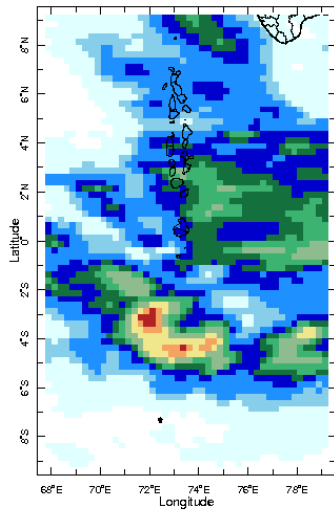
16 Jul 2022



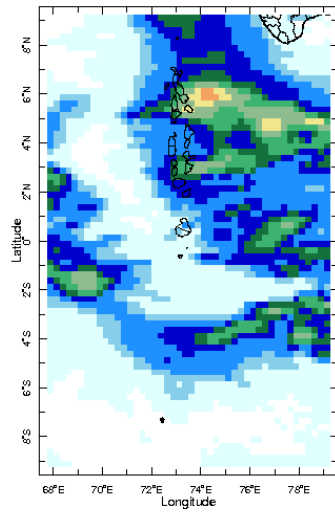
17 Jul 2022



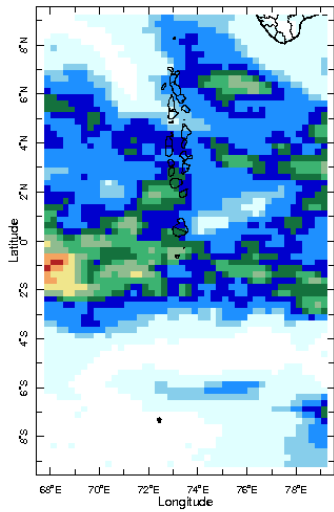
18 Jul 2022



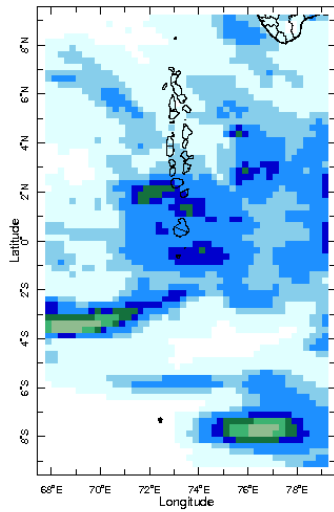
19 Jul 2022



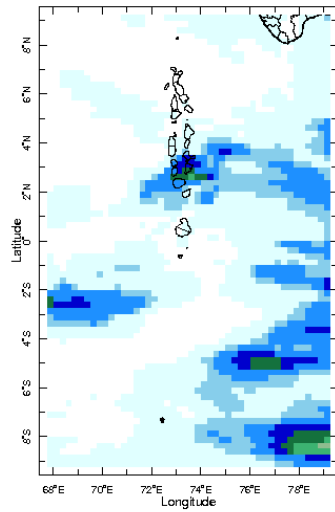
20 Jul 2022



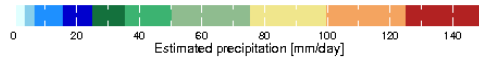
21 Jul 2022



22 Jul 2022

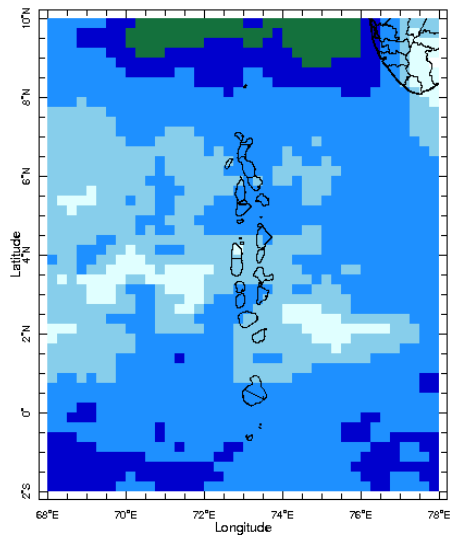


23 Jul 2022

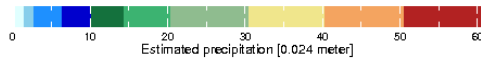


Monthly Rainfall Monitoring

The figure shows the average observed rainfall in the previous month.



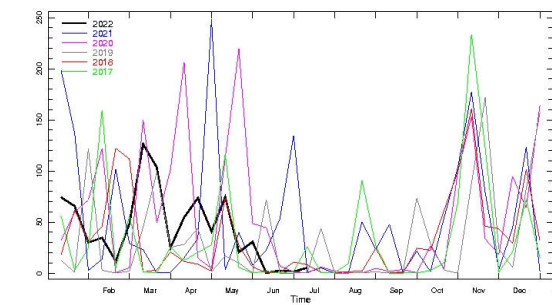
Jun 2022



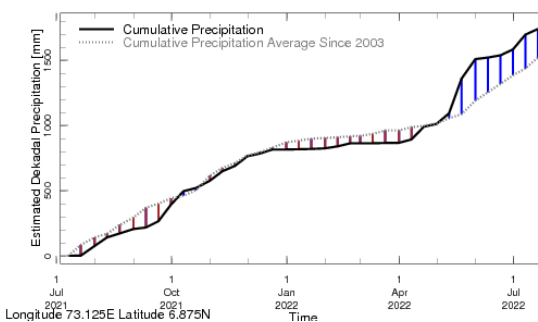
Monthly Average

Monthly and Seasonal Monitoring

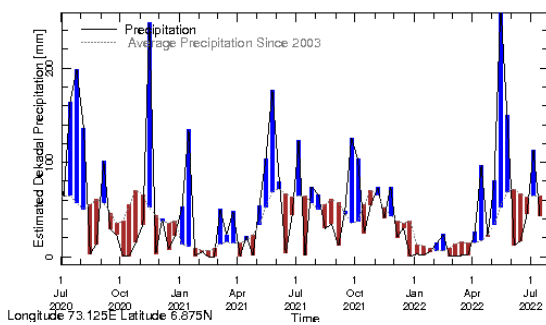
Northern Maldives:



Longitude 73.125E Latitude 6.875N
Rainfall in the current year (black) compared to rainfall in previous 5 years

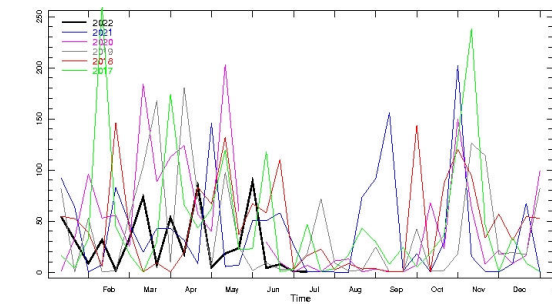


Longitude 73.125E Latitude 6.875N
Rainfall of past 365 days (black) compared to average rainfall since 2003.

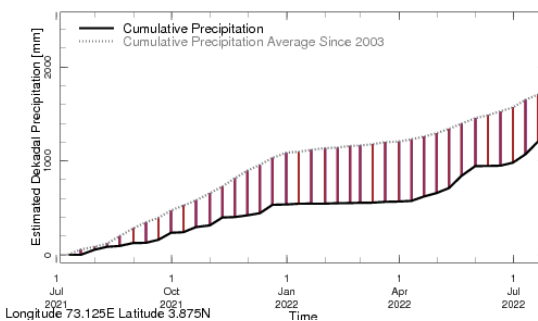


Longitude 73.125E Latitude 6.875N
Rainfall in the past 5 years with above-average rainfall hatched in blue and below-average hatched in brown

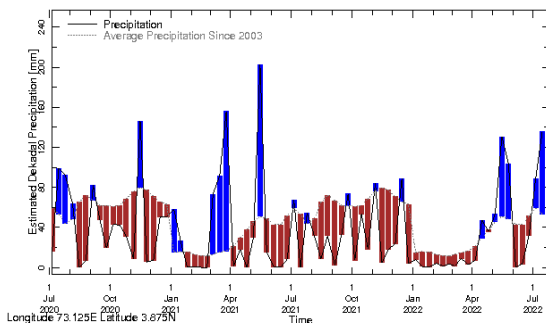
Central Maldives:



Longitude 73.125E Latitude 3.875N
Rainfall in the current year (black) compared to rainfall in previous 5 years

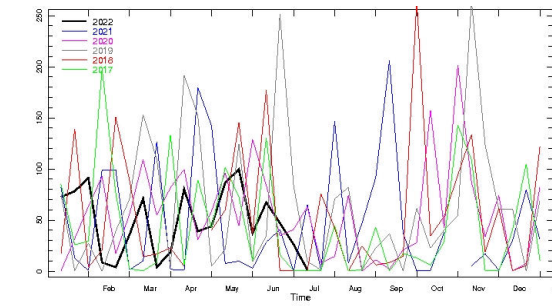


Longitude 73.125E Latitude 3.875N
Rainfall of past 365 days (black) compared to average rainfall since 2003.

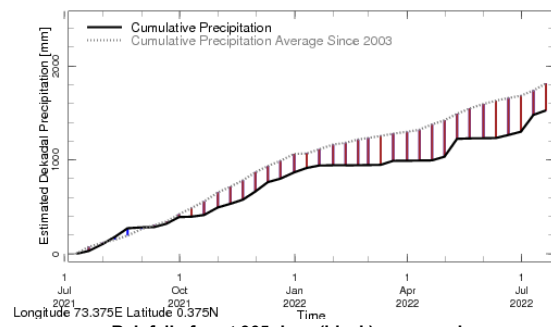


Longitude 73.125E Latitude 3.875N
Rainfall in the past 5 years with above-average rainfall hatched in blue and below-average hatched in brown

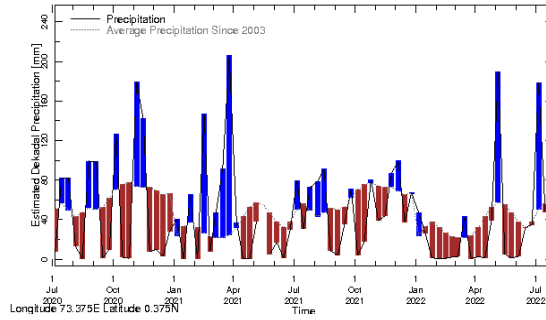
Southern Maldives:



Longitude 73.375E Latitude 0.375N
Rainfall in the current year (black) compared to rainfall in previous 5 years

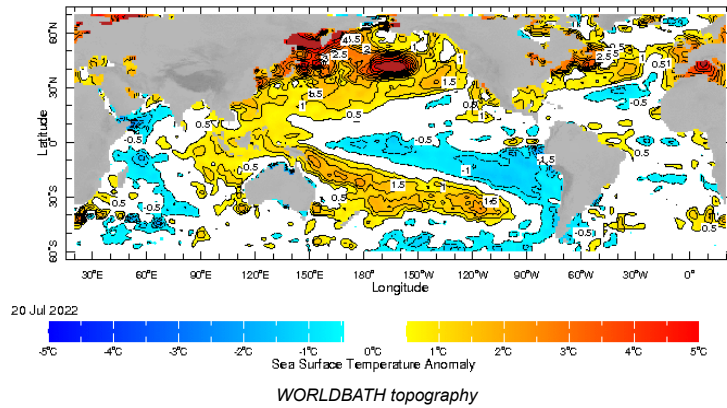


Longitude 73.375E Latitude 0.375N
Rainfall of past 365 days (black) compared to average rainfall since 2003.

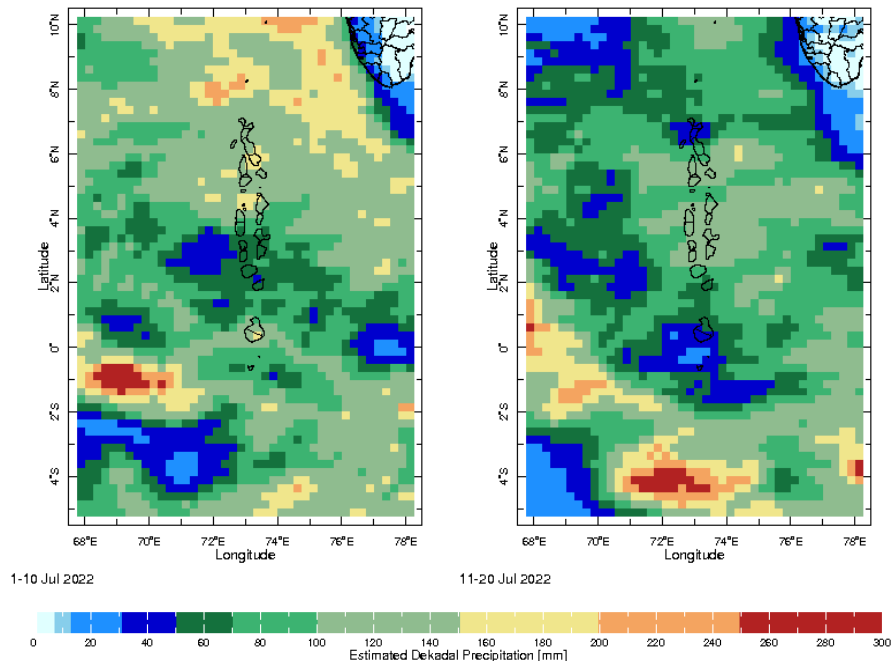


Longitude 73.375E Latitude 0.375N
Rainfall in the past 5 years with above-average rainfall hatched in blue and below-average hatched in brown

Ocean Surface Monitoring



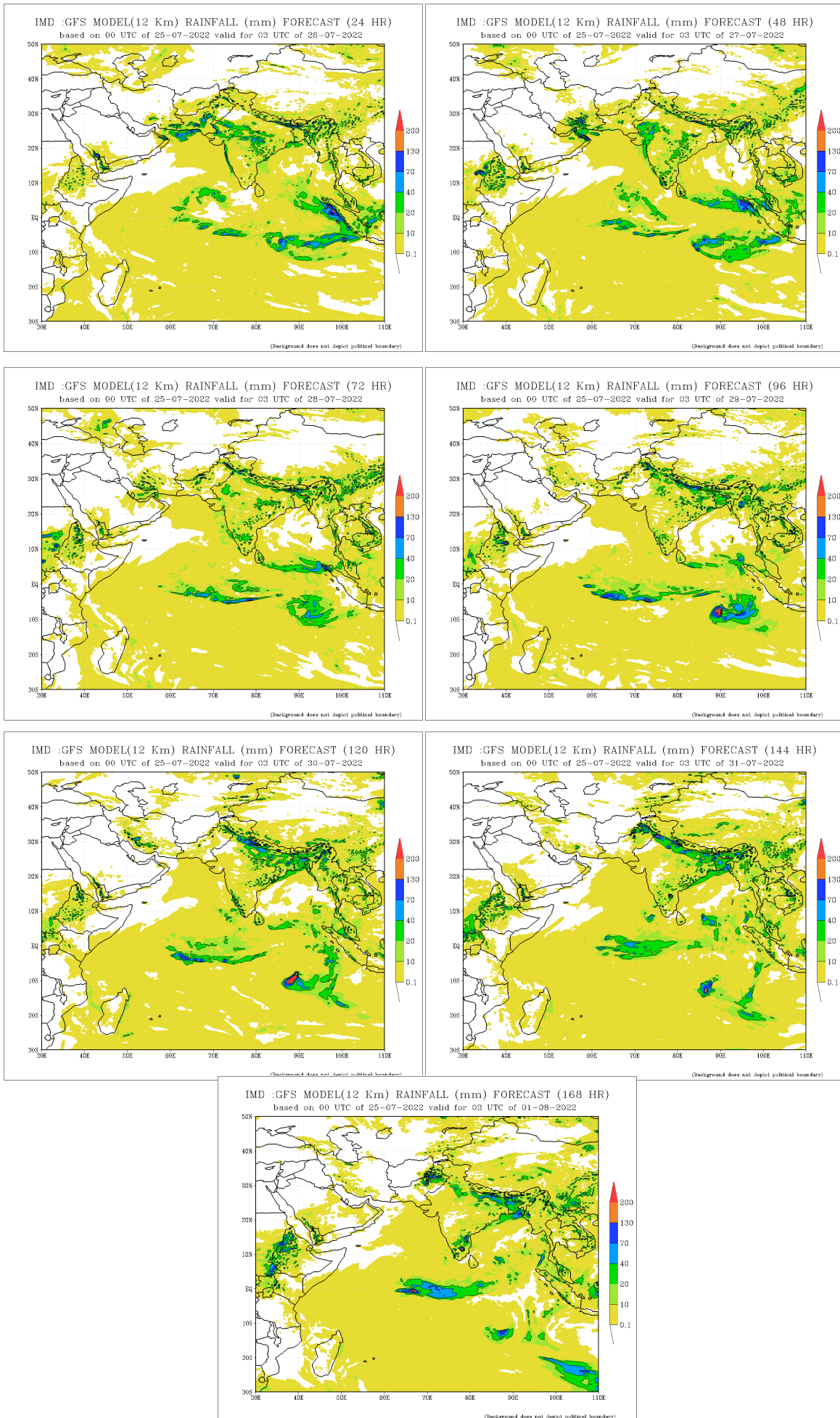
Dekadal (10 Day) Satellite Derived Rainfall Estimates



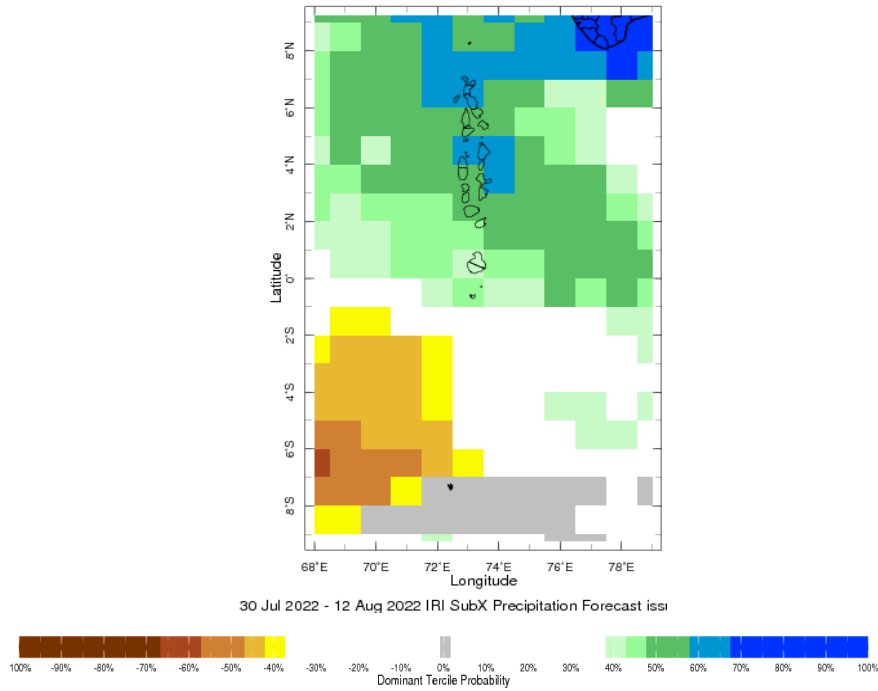
1-10 Jul 2022 11-20 Jul 2022
 0 20 40 60 80 100 120 140 160 180 200 220 240 260 280 300
 Estimated Dekadal Precipitation [mm]

Daily Rainfall Forecast

Daily Rainfall forecasts (up to 7 days ahead) from the IMD is provided in figures below. These predictions are from the GFS (T1534) model covering the entire south Asian region.



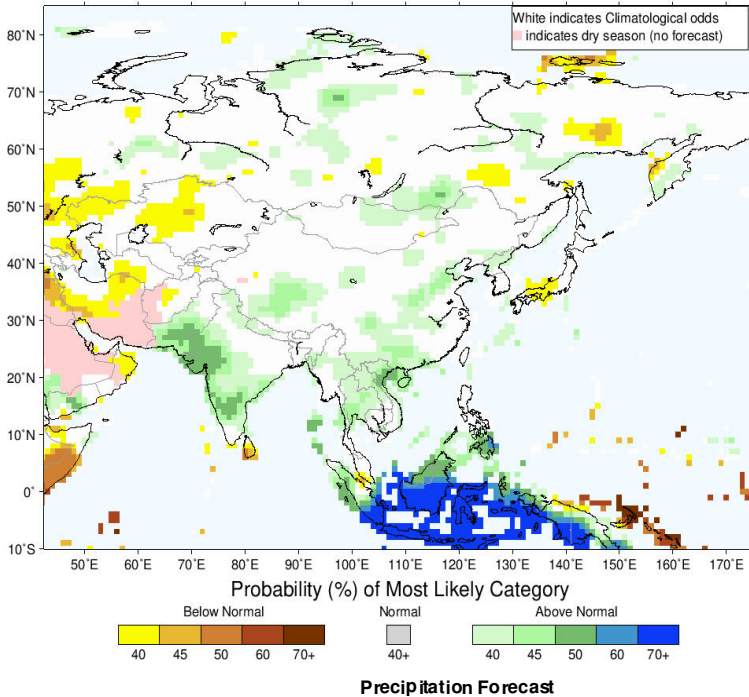
Bi-weekly Precipitation Forecast



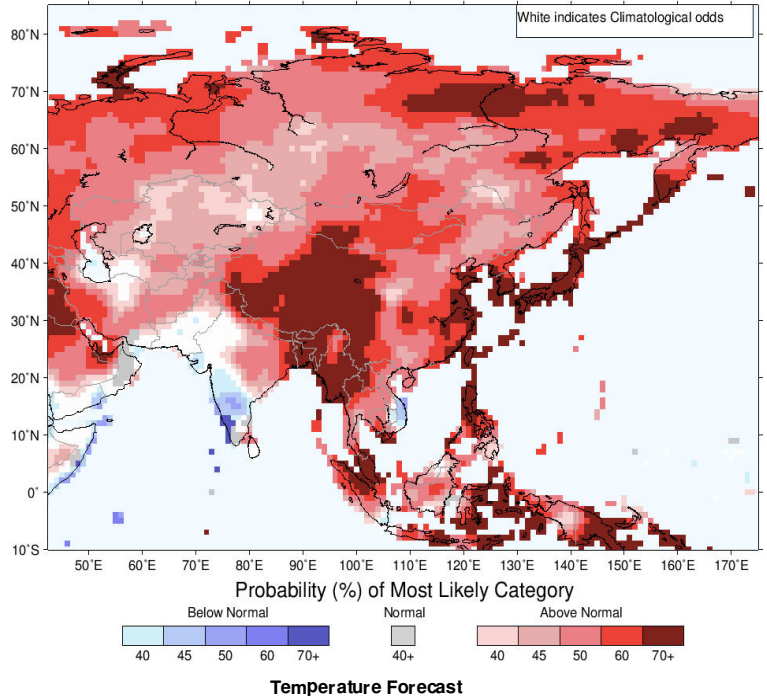
Seasonal Rainfall and Temperature Forecast

Following is the latest seasonal precipitation and temperature prediction for the next 3 months by the IRI. The color shading indicates the probability of the most dominant tercile – that is, the tercile having the highest forecast probability. The color bar alongside the map defines these dominant tercile probability levels. The upper side of the color bar shows the colors used for increasingly strong probabilities when the dominant tercile is the above-normal tercile, while the lower side shows likewise for the below-normal tercile. The gray color indicates an enhanced probability for the near-normal tercile (nearly always limited to 40%).

IRI Multi-Model Probability Forecast for Precipitation for August–September–October 2022, Issued July 2022



IRI Multi-Model Probability Forecast for Temperature for August–September–October 2022, Issued July 2022



Subscribe to our Monthly Maldives Newsletter

email address

Subscribe

Follow @fectmv

Contact Us
email: fectmv@gmail.com
phone: (+96) 07 788010
blog: www.lectmv.blogspot.com

Foundation for Environment, Climate & Technology,
REM, Madhrasaadhoshuge,
Henveiru, Hadheebee Magu,
Male', 20184,
Maldives