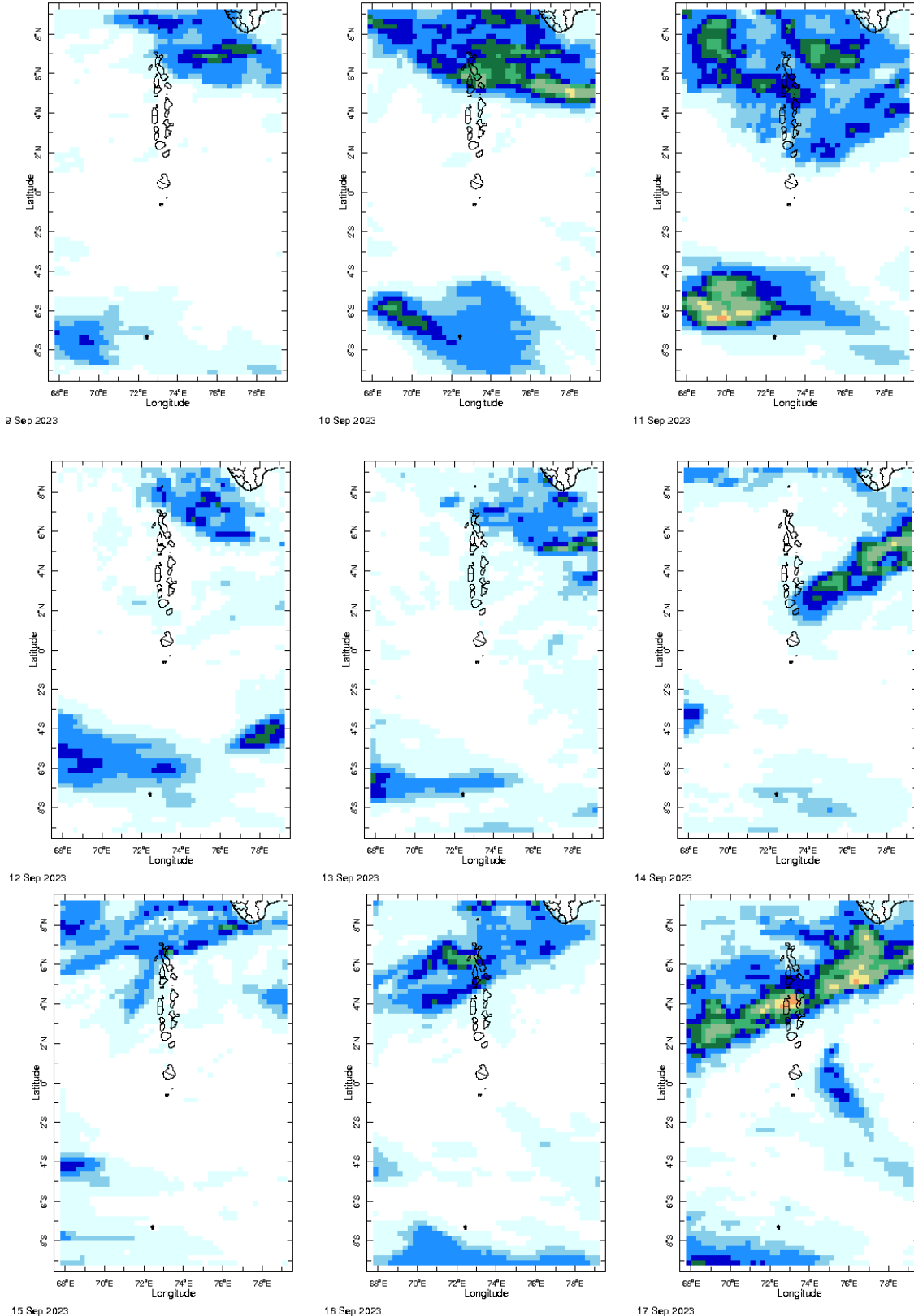
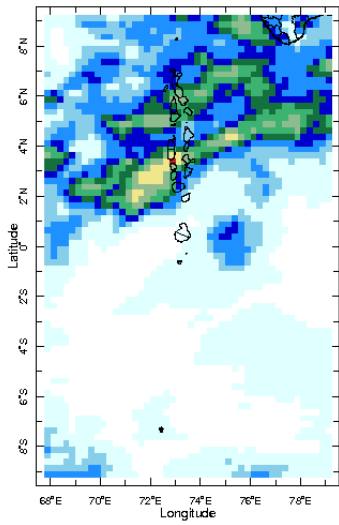




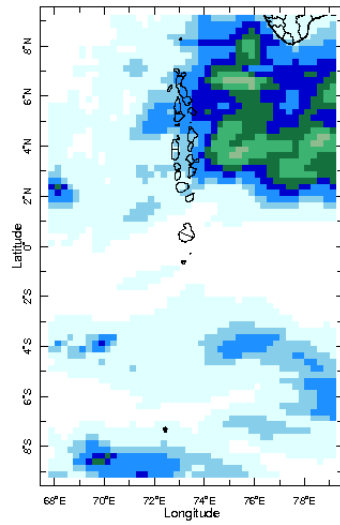
Daily Rainfall Monitoring

The following figures show the observed rainfall in the last 15 days in Maldives.

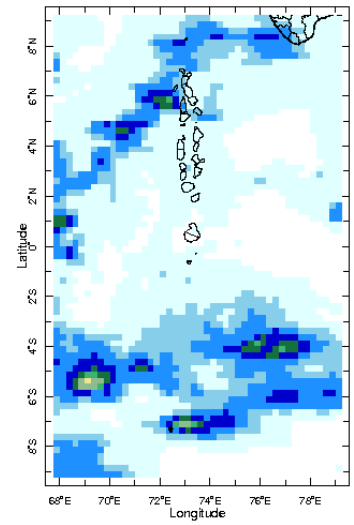




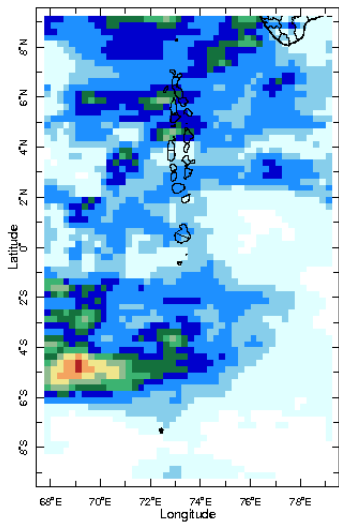
18 Sep 2023



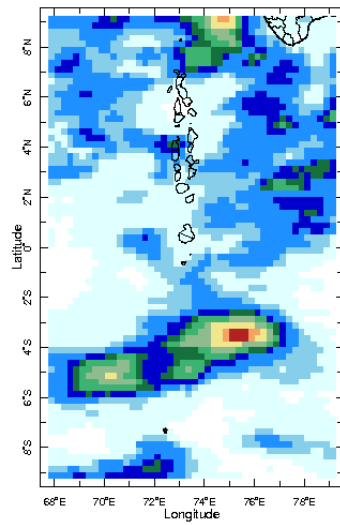
19 Sep 2023



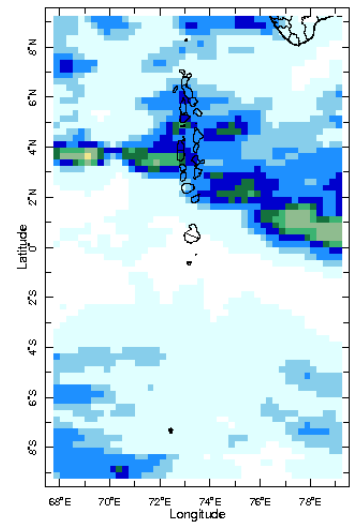
20 Sep 2023



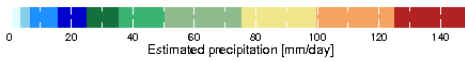
21 Sep 2023



22 Sep 2023

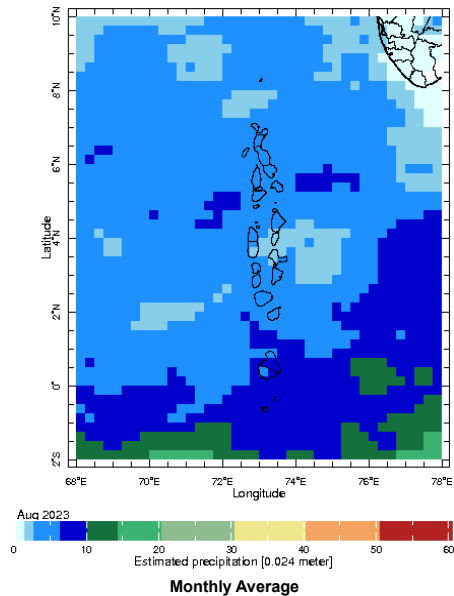


23 Sep 2023



Monthly Rainfall Monitoring

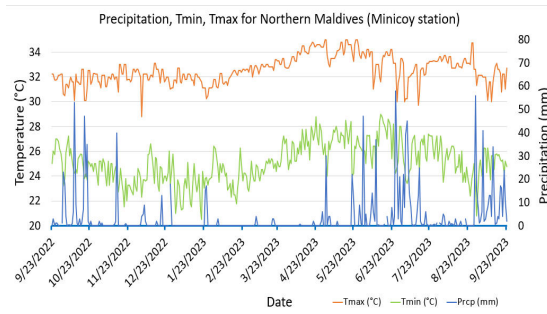
The figure shows the average observed rainfall in the previous month.



Monthly Average

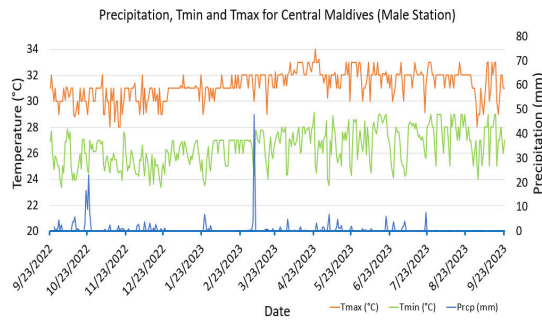
Monthly and Seasonal Monitoring

Northern Maldives:



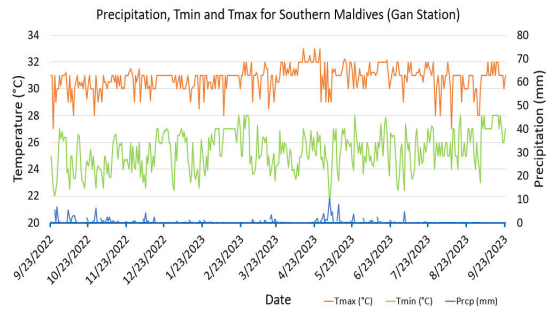
Daily Rainfall, Tmin & Tmax for the previous year in Minicoy station (2022 September to 2023 September)

Central Maldives:



Daily Rainfall, Tmin & Tmax for the previous year in Male station (2022 September to 2023 September)

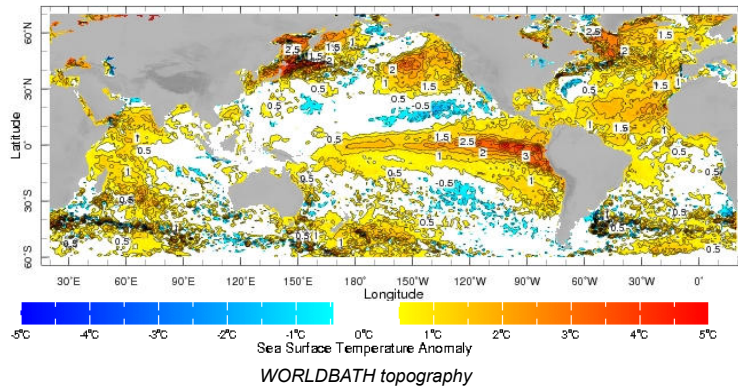
Southern Maldives:



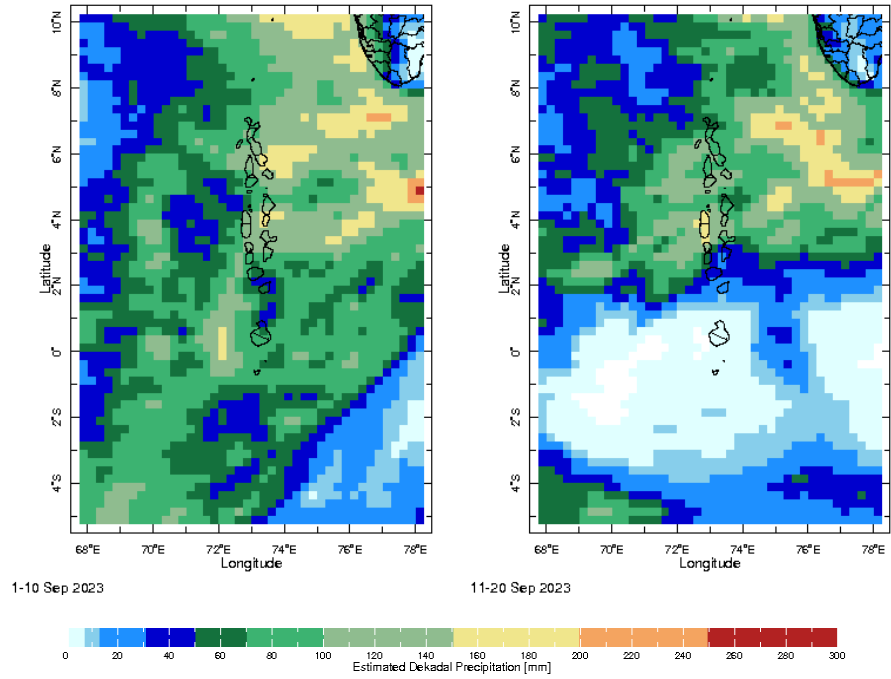
Daily Rainfall, Tmin & Tmax for the previous year in Gan station (2022 September to 2023 September)

Ocean Surface Monitoring

zlev 0.0 meters Time 29 Aug 2023 - 4 Sep 2023

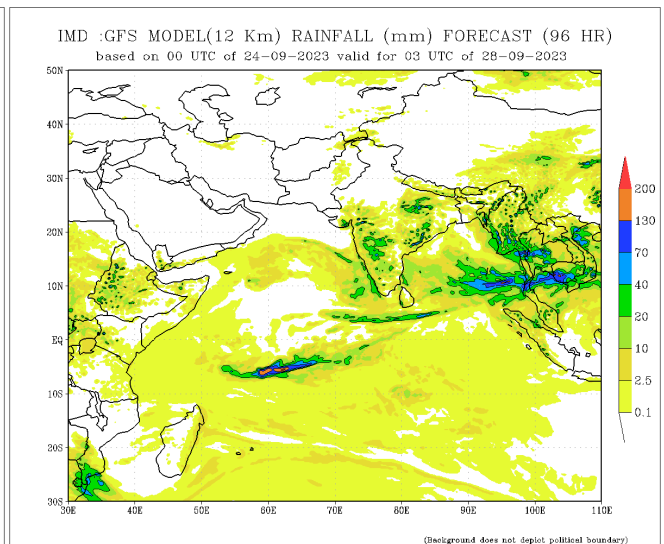
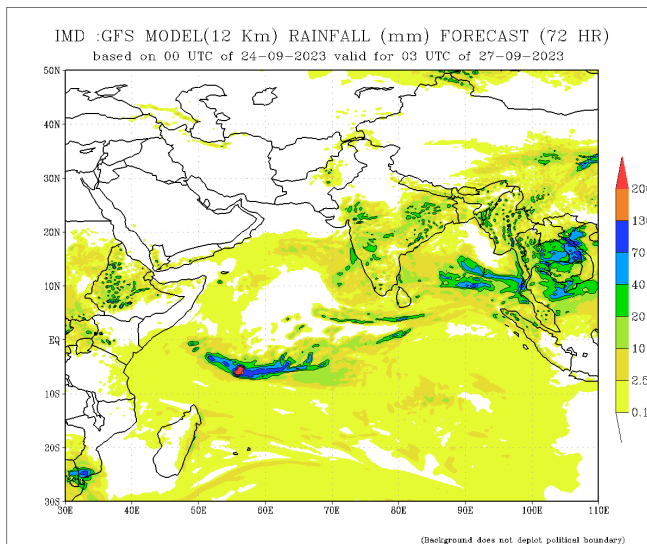
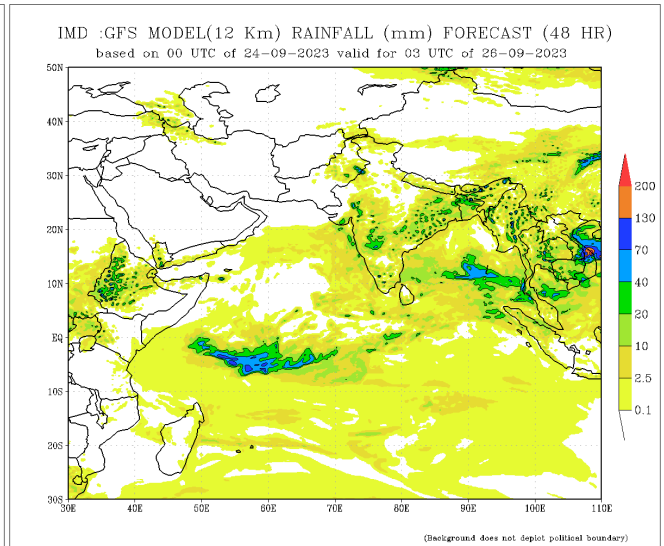
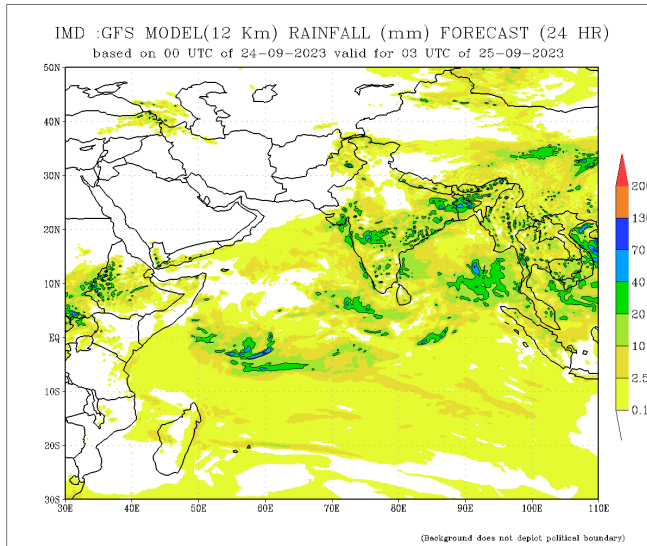


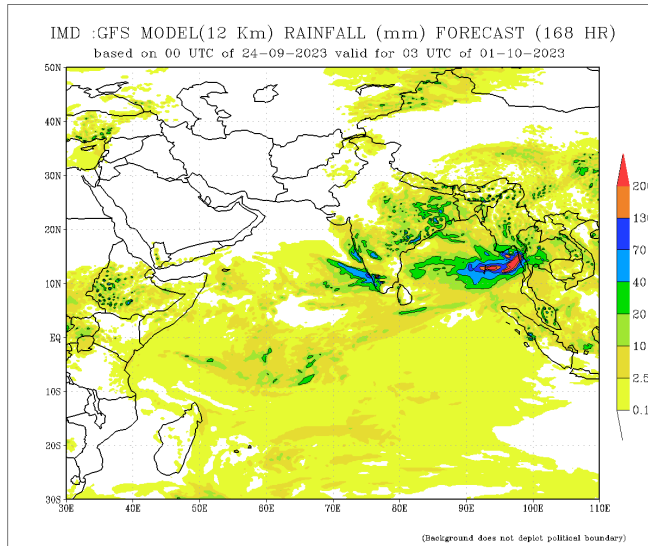
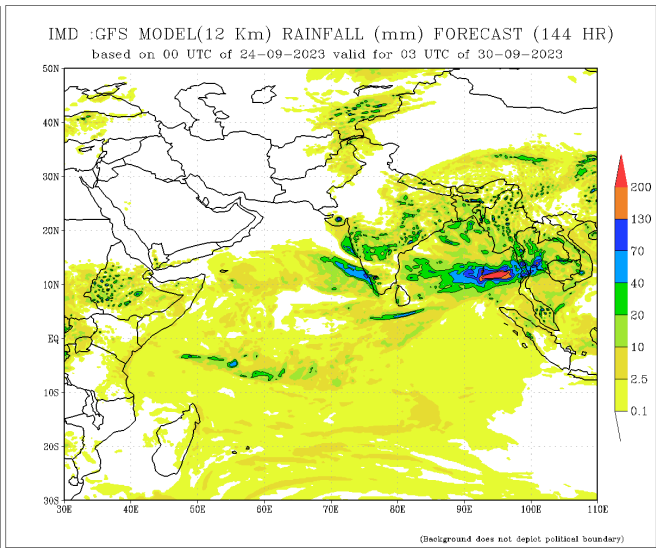
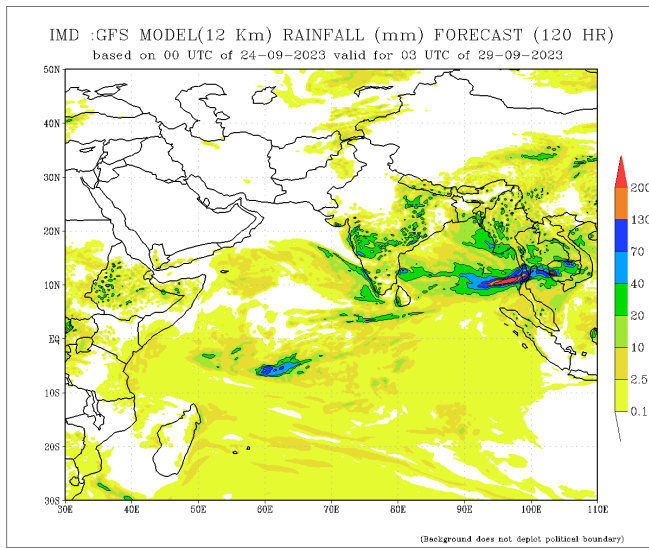
Dekadal (10 Day) Satellite Derived Rainfall Estimates



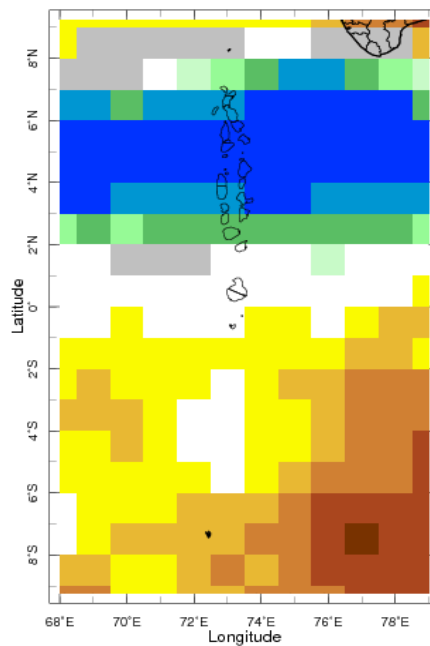
Daily Rainfall Forecast

Daily Rainfall forecasts (up to 7 days ahead) from the IMD is provided in figures below. These predictions are from the GFS (T1534) model covering the entire south Asian region.

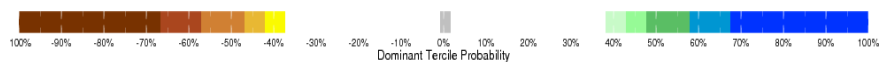




Bi-weekly Precipitation Forecast



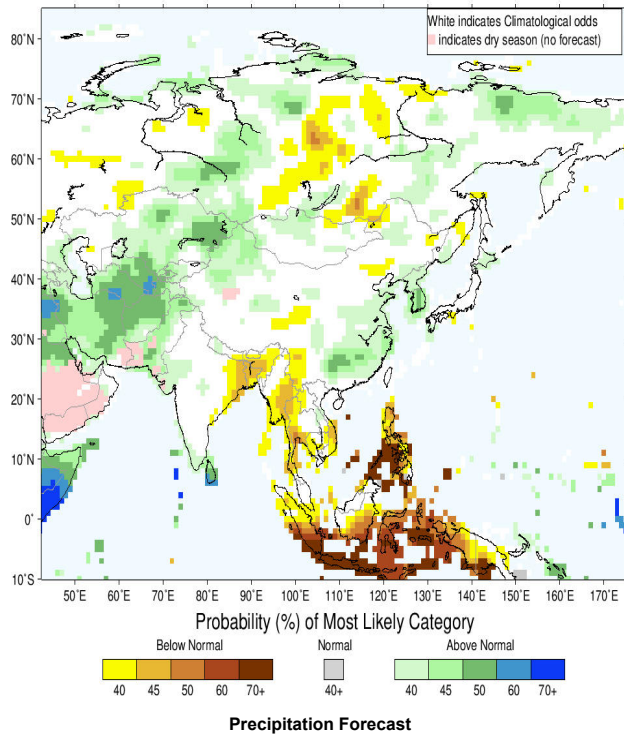
30 Sep 2023 - 13 Oct 2023 IRI SubX Precipitation Forecast iss



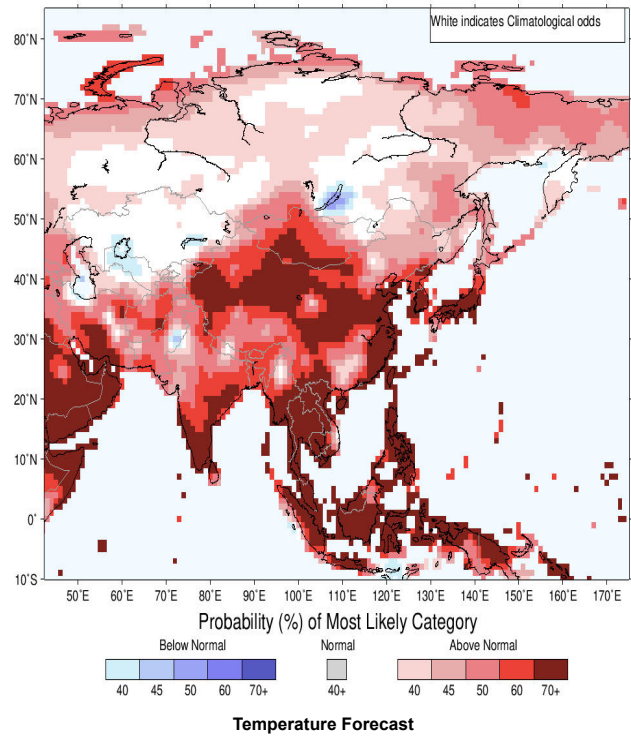
Seasonal Rainfall and Temperature Forecast

Following is the latest seasonal precipitation and temperature prediction for the next 3 months by the IRI. The color shading indicates the probability of the most dominant tercile -- that is, the tercile having the highest forecast probability. The color bar alongside the map defines these dominant tercile probability levels. The upper side of the color bar shows the colors used for increasingly strong probabilities when the dominant tercile is the above-normal tercile, while the lower side shows likewise for the below-normal tercile. The gray color indicates an enhanced probability for the near-normal tercile (nearly always limited to 40%).

IRI Multi-Model Probability Forecast for Precipitation for October–November–December 2023, Issued September 2023



IRI Multi-Model Probability Forecast for Temperature for October–November–December 2023, Issued September 2023



Subscribe to our Monthly Maldives Newsletter

email address

Subscribe

Follow @fectmv

Contact Us

email: fectmv@gmail.com

phone: (+96) 07 788010

blog: www.fectmv.blogspot.com

Foundation for Environment, Climate & Technology,
REM, Madhrasaadhoshuge,
Henveiru, Hadheebee Magu,
Male', 20184,
Maldives