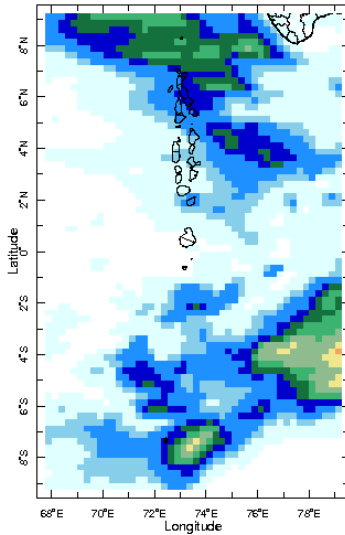


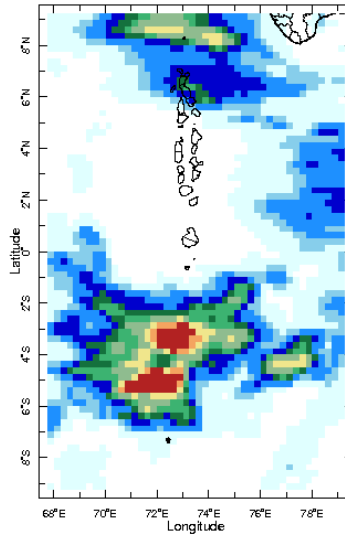


## Daily Rainfall Monitoring

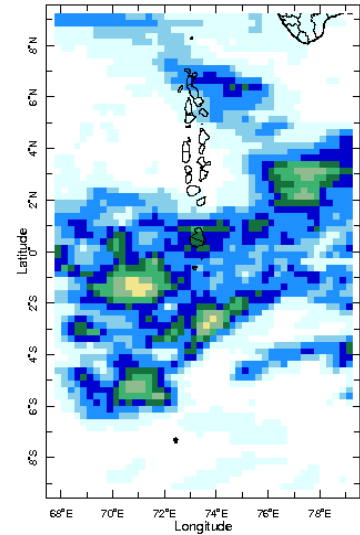
The following figures show the observed rainfall in the last 15 days in Maldives.



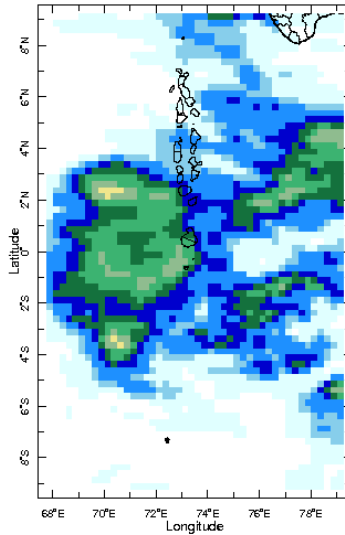
8 Aug 2021



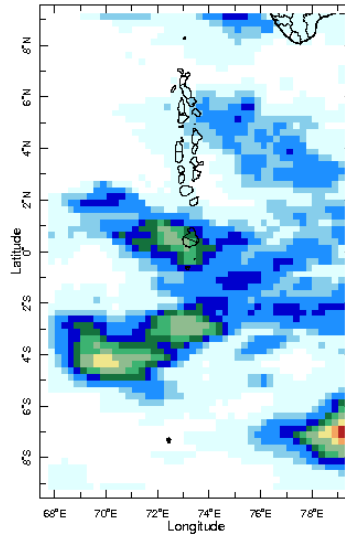
9 Aug 2021



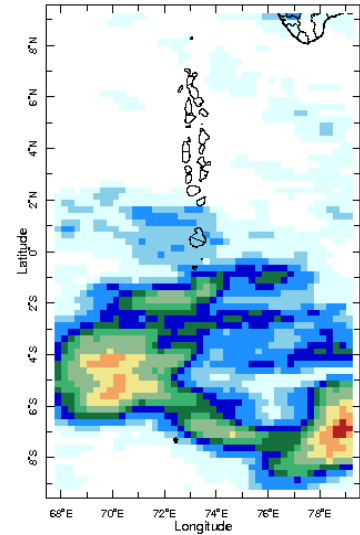
10 Aug 2021



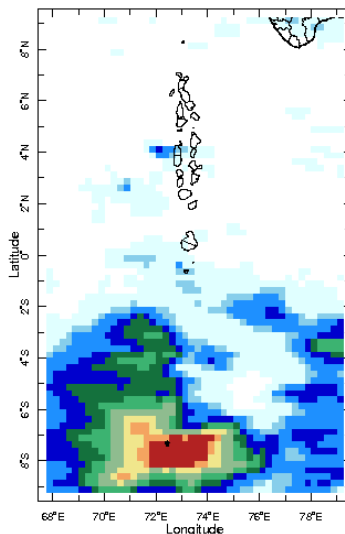
11 Aug 2021



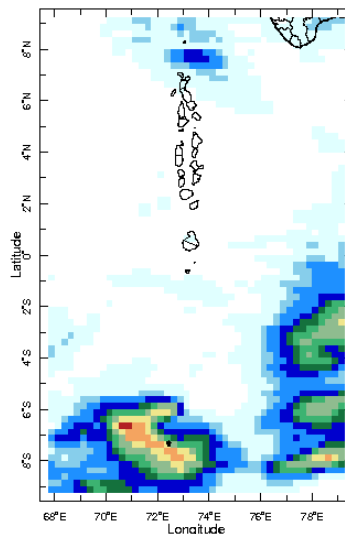
12 Aug 2021



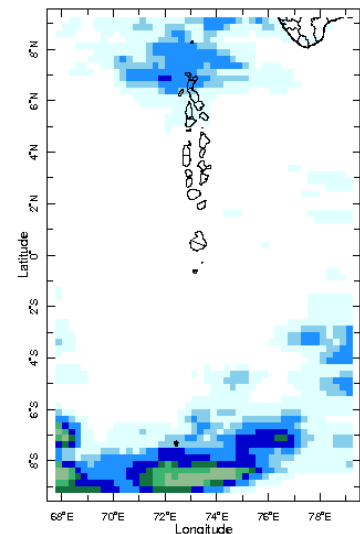
13 Aug 2021



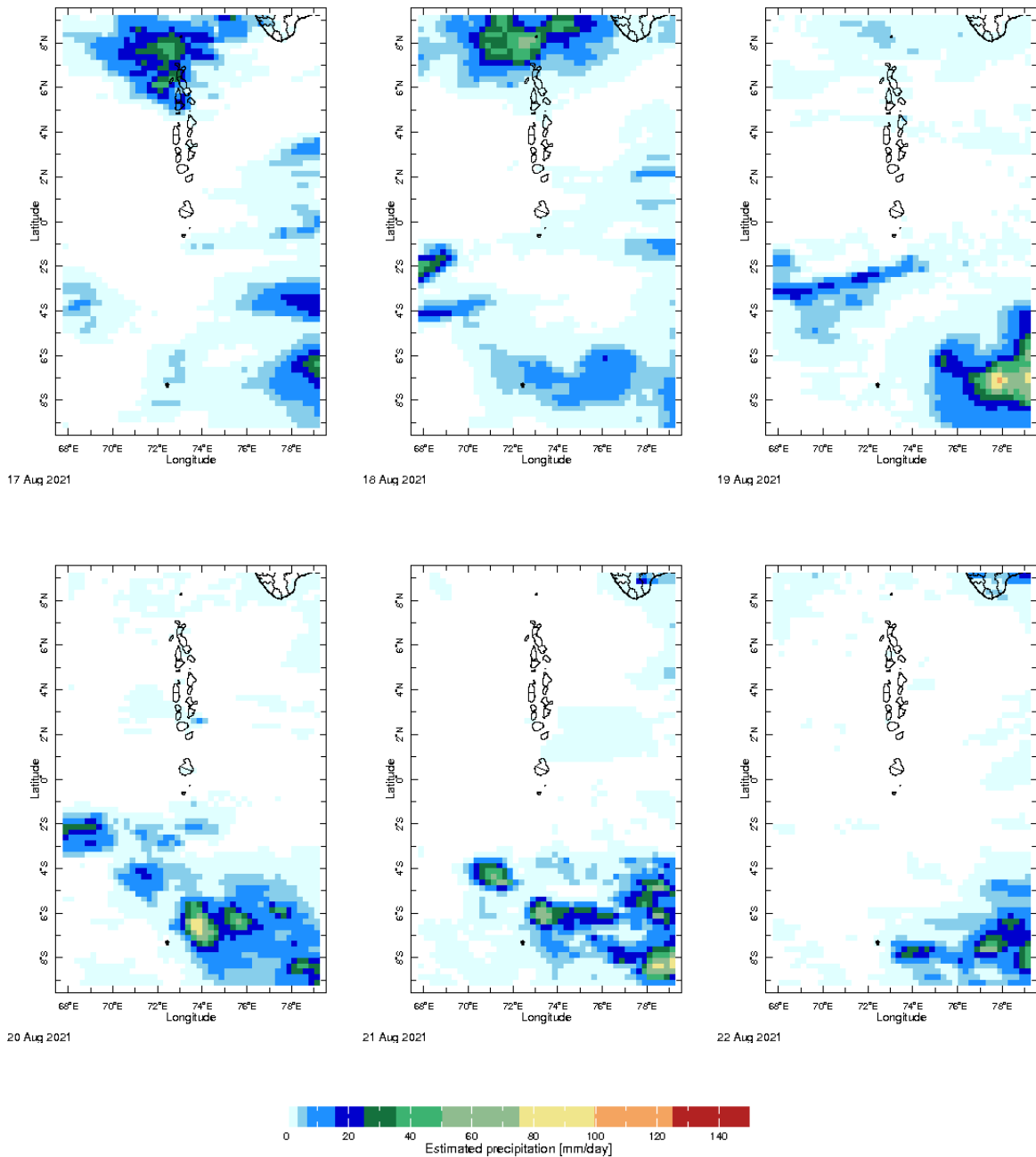
14 Aug 2021



15 Aug 2021

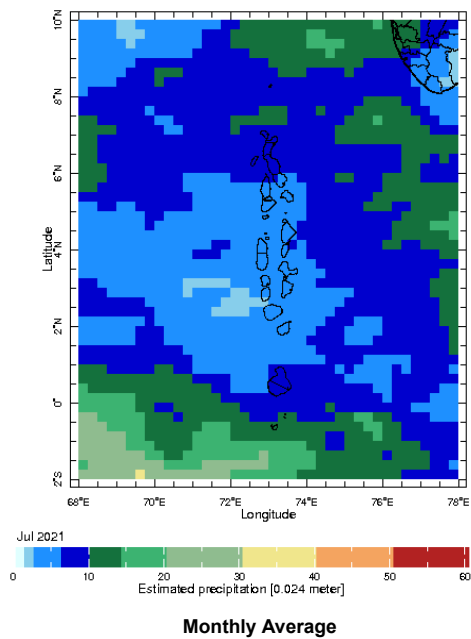


16 Aug 2021



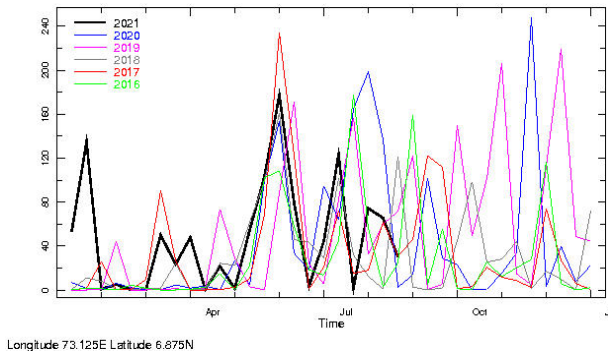
## Monthly Rainfall Monitoring

The figure shows the average observed rainfall in the previous month.

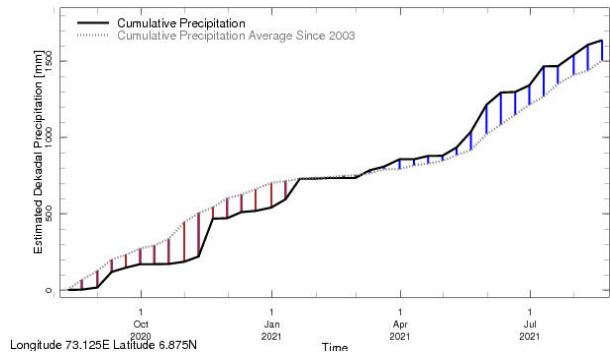


# Monthly and Seasonal Monitoring

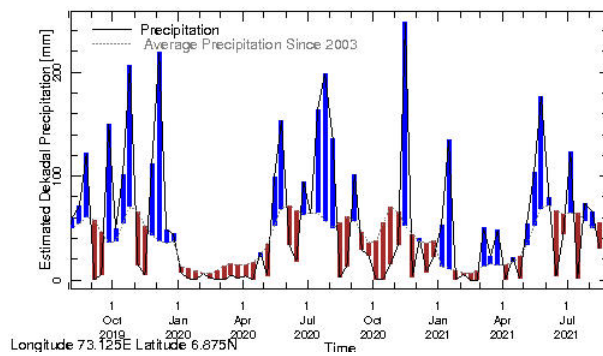
## Northern Maldives:



**Rainfall in the current year (black) compared to rainfall in previous 5 years**

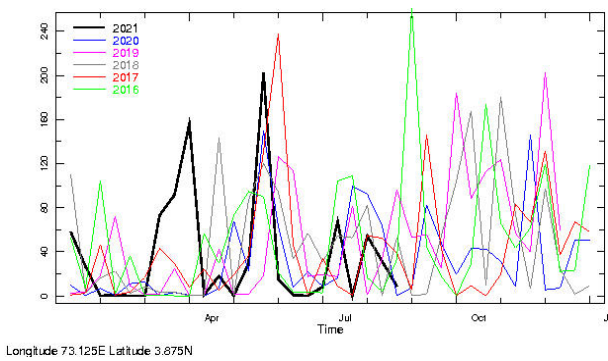


**Rainfall of past 365 days (black) compared to average rainfall since 2003.**

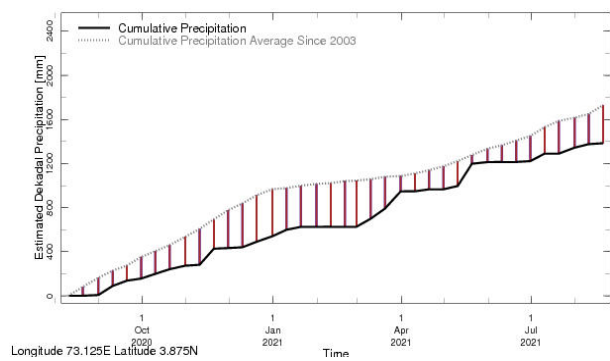


**Rainfall in the past 5 years with above-average rainfall hatched in blue and below-average hatched in brown**

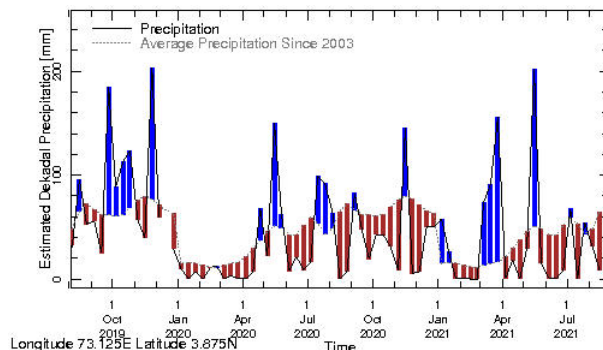
## Central Maldives:



**Rainfall in the current year (black) compared to rainfall in previous 5 years**

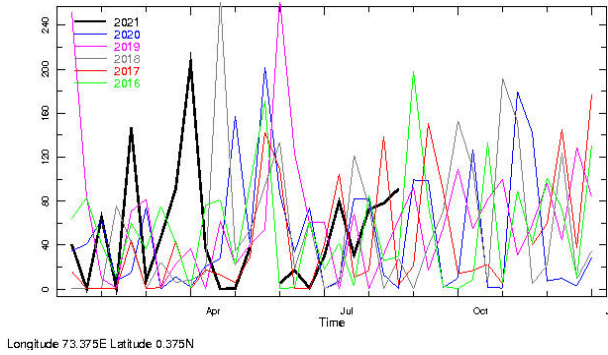


**Rainfall of past 365 days (black) compared to average rainfall since 2003.**

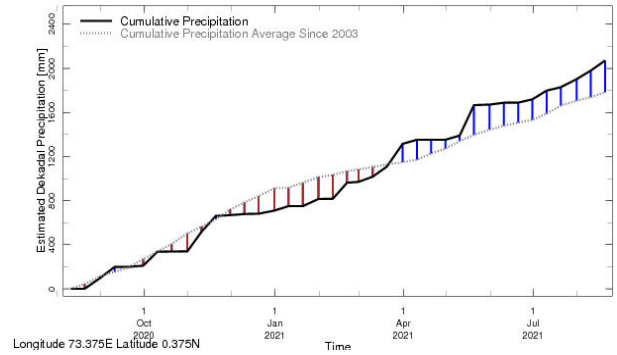


**Rainfall in the past 5 years with above-average rainfall hatched in blue and below-average hatched in brown**

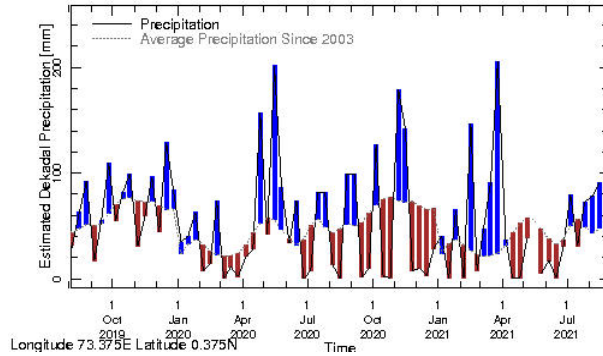
**Southern Maldives:**



**Rainfall in the current year (black) compared to rainfall in previous 5 years**

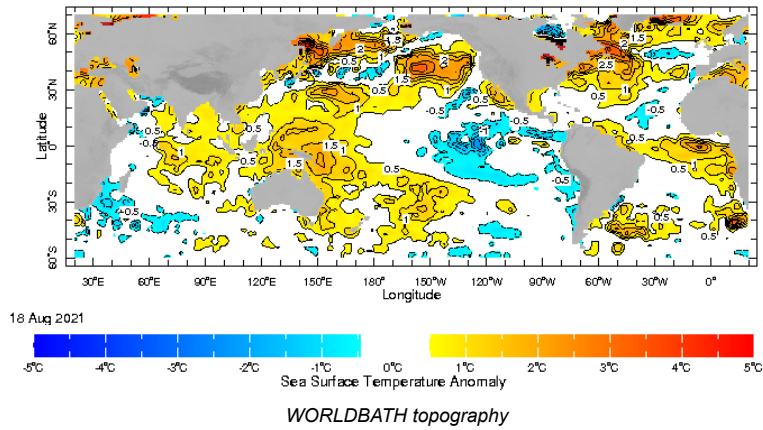


**Rainfall of past 365 days (black) compared to average rainfall since 2003.**

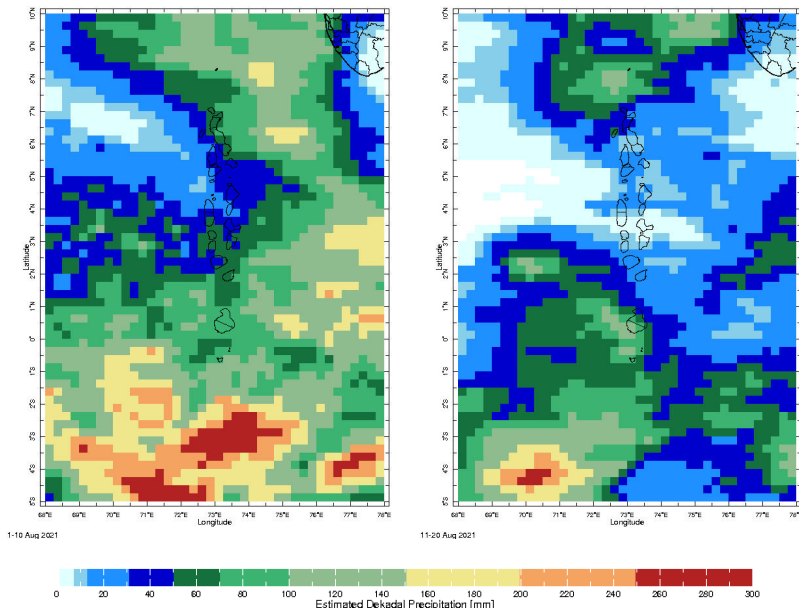


**Rainfall in the past 5 years with above-average rainfall hatched in blue and below-average hatched in brown**

**Ocean Surface Monitoring**

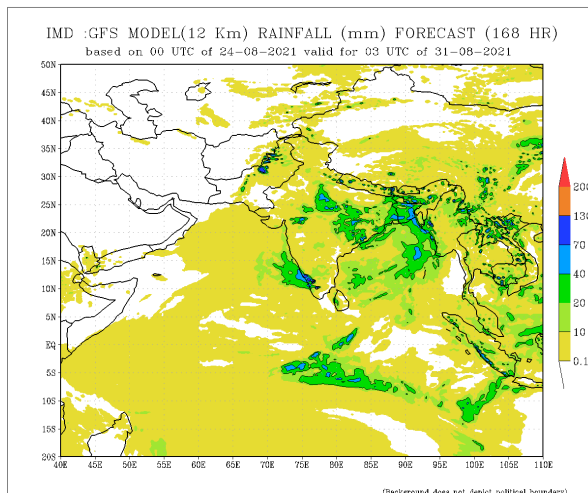
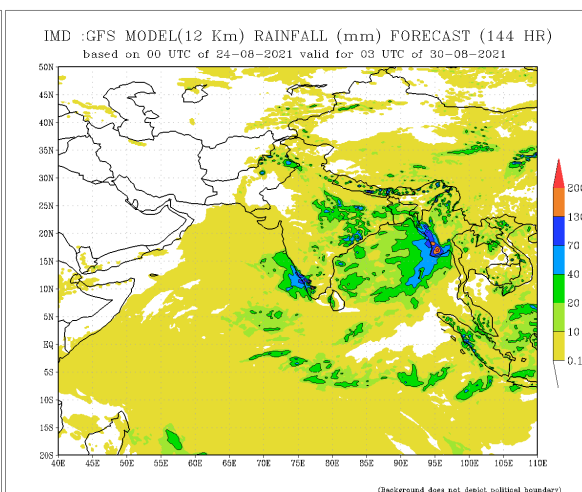
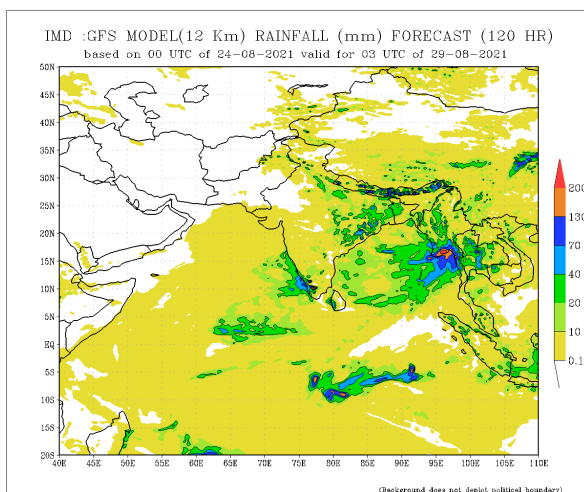
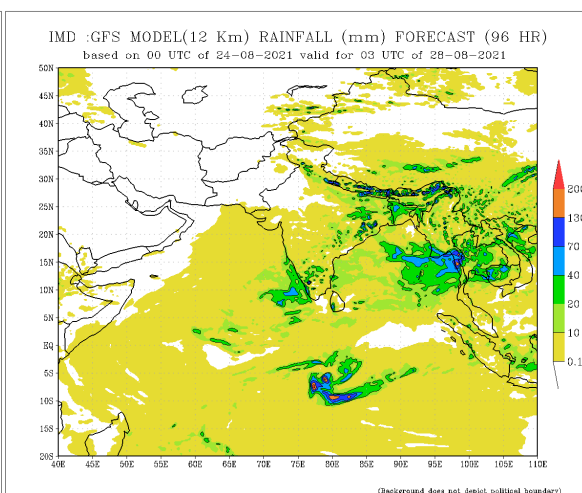
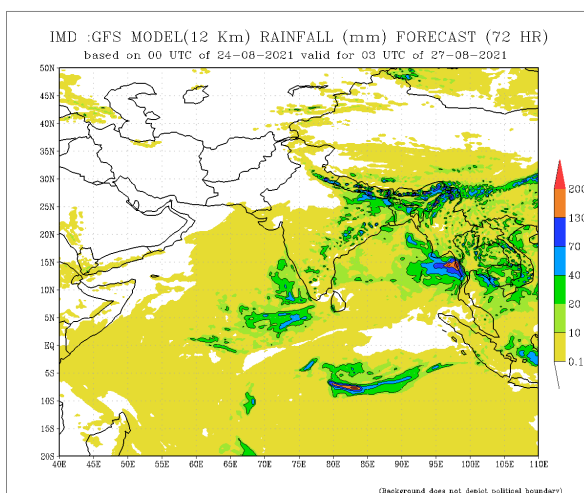
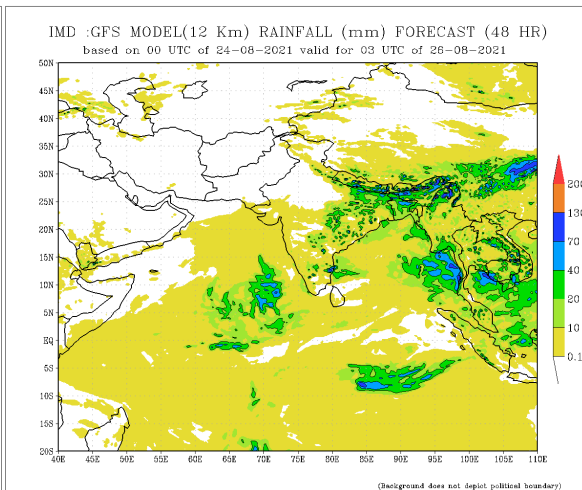
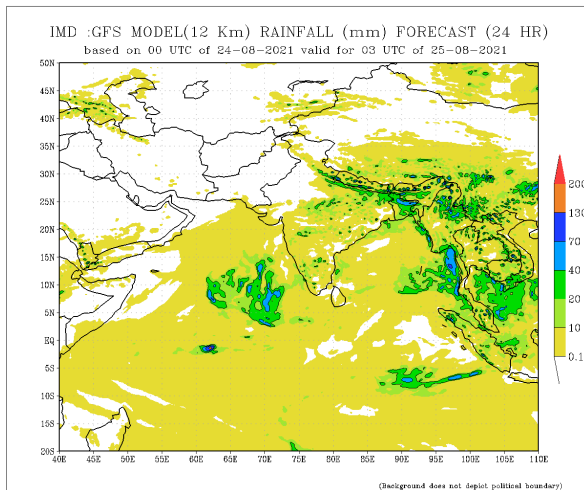


**Dekadal (10 Day) Satellite Derived Rainfall Estimates**



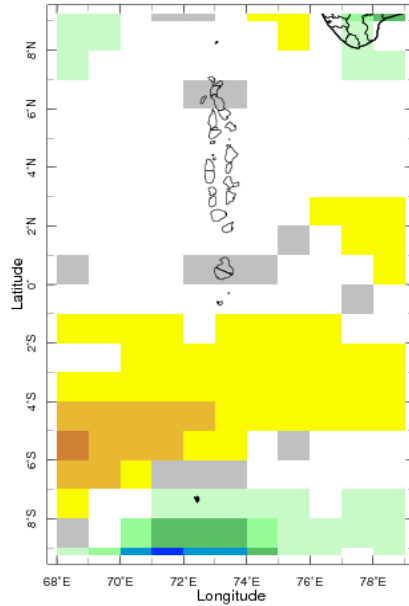
# Daily Rainfall Forecast

Daily Rainfall forecasts (up to 7 days ahead) from the IMD is provided in figures below. These predictions are from the GFS (T1534) model covering the entire south Asian region.

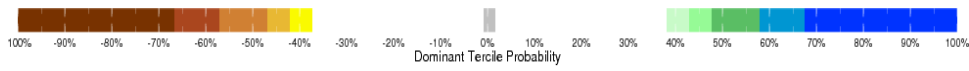




# Weekly Precipitation Forecast



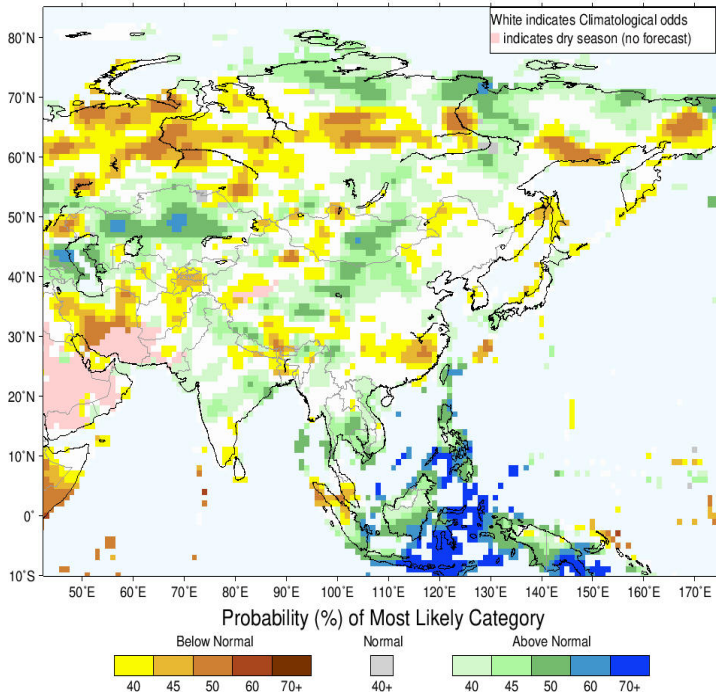
21-27 Aug 2021 IRI SubX Precipitation Forecast issued 0000 z



## Seasonal Rainfall and Temperature Forecast

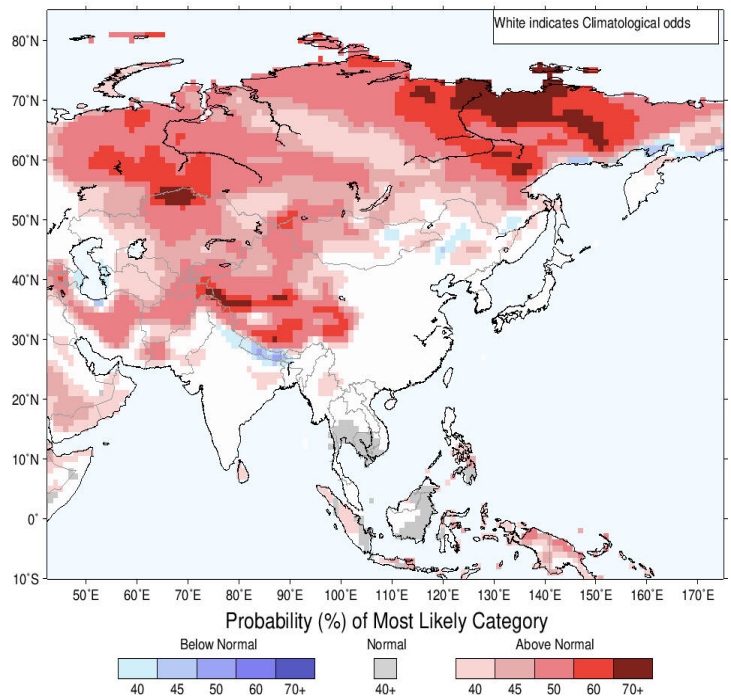
Following is the latest seasonal precipitation and temperature prediction for the next 3 months by the IRI. The color shading indicates the probability of the most dominant tercile -- that is, the tercile having the highest forecast probability. The color bar alongside the map defines these dominant tercile probability levels. The upper side of the color bar shows the colors used for increasingly strong probabilities when the dominant tercile is the above-normal tercile, while the lower side shows likewise for the below-normal tercile. The gray color indicates an enhanced probability for the near-normal tercile (nearly always limited to 40%).

IRI Multi-Model Probability Forecast for Precipitation for September–October–November 2021, Issued August 2021



Precipitation Forecast

IRI Multi-Model Probability Forecast for Temperature for September–October–November 2021, Issued August 2021



Temperature Forecast

Subscribe to our Monthly Maldives Newsletter

email address

Subscribe

Follow @fectmv

Contact Us  
 email: [fectmv@gmail.com](mailto:fectmv@gmail.com)  
 phone: (+96) 07 788010  
 blog: [www.fectmv.blogspot.com](http://www.fectmv.blogspot.com)

Foundation for Environment, Climate & Technology,  
 REM, Madhrasaadhoshuge,  
 Henveiru, Hadheebee Magu,  
 Male', 20184,  
 Maldives