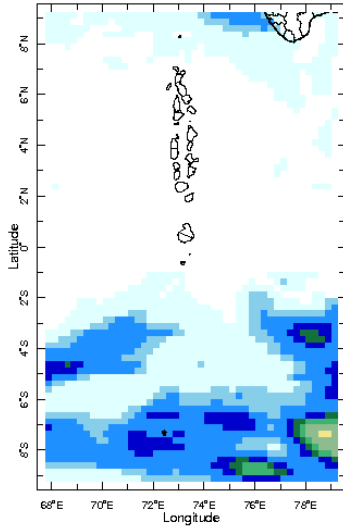


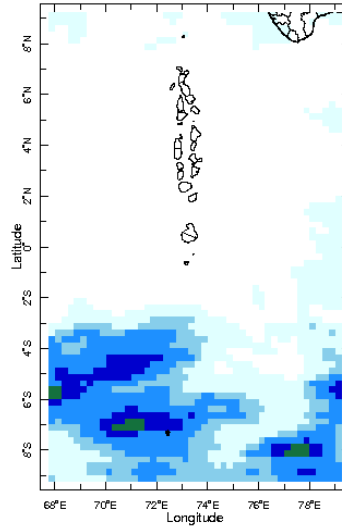


Daily Rainfall Monitoring

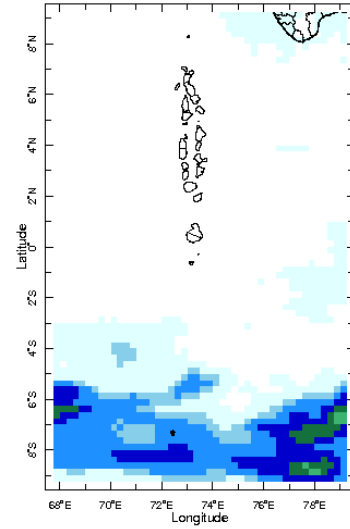
The following figures show the observed rainfall in the last 15 days in Maldives.



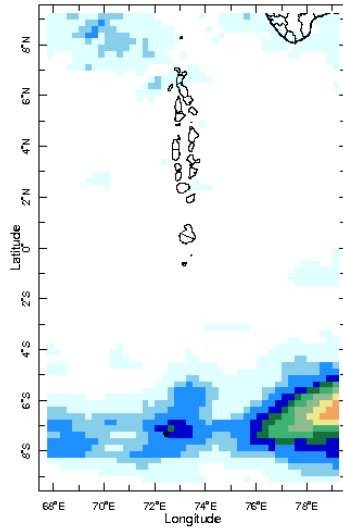
8 Jul 2023



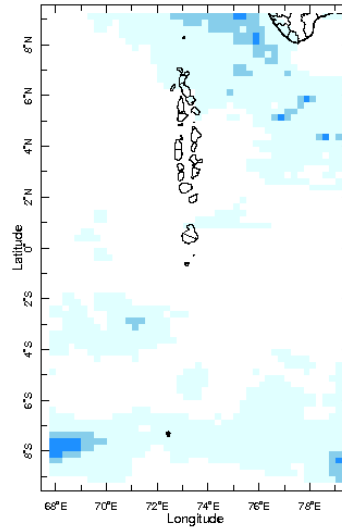
9 Jul 2023



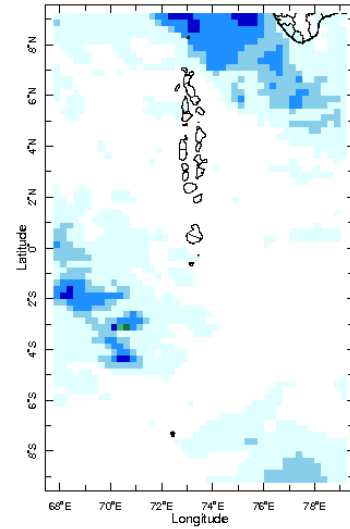
10 Jul 2023



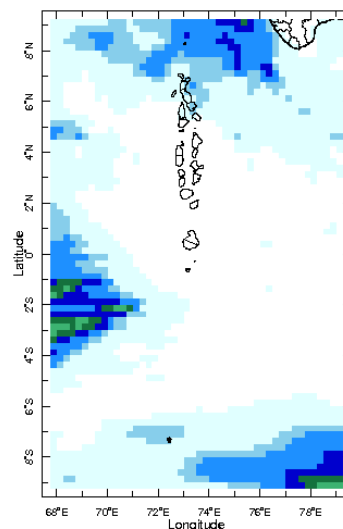
11 Jul 2023



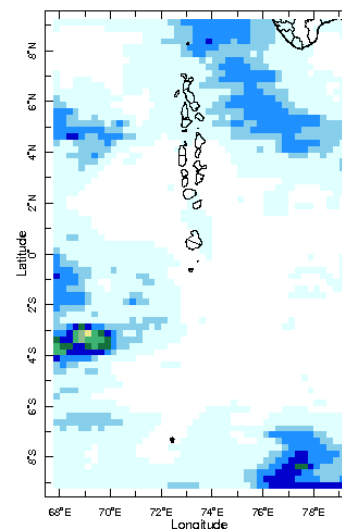
12 Jul 2023



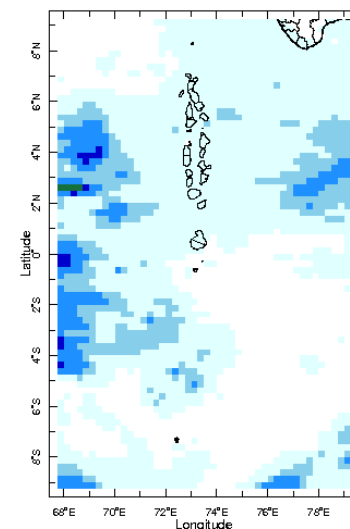
13 Jul 2023



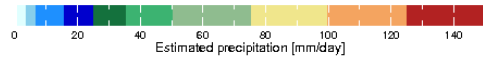
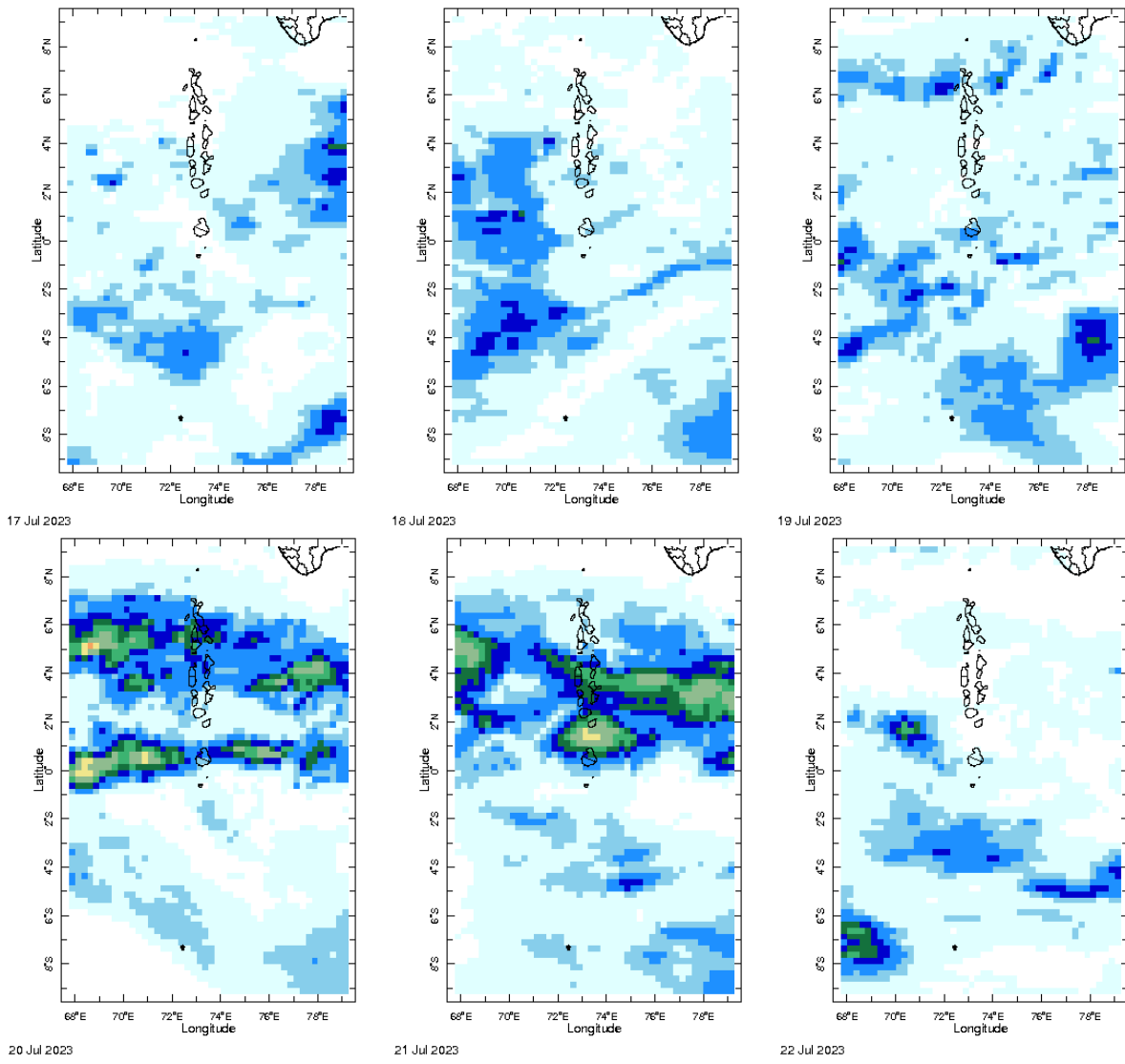
14 Jul 2023



15 Jul 2023

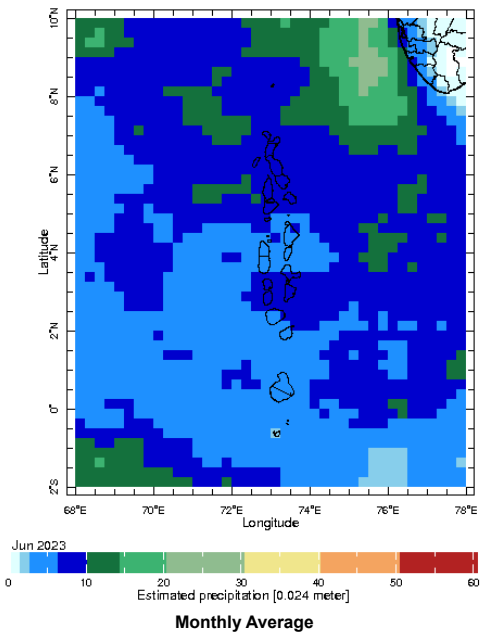


16 Jul 2023



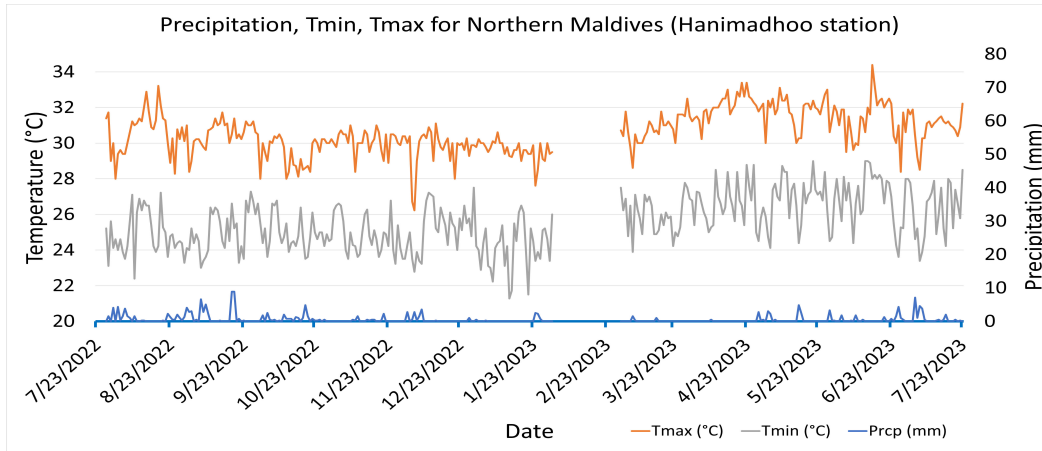
Monthly Rainfall Monitoring

The figure shows the average observed rainfall in the previous month.



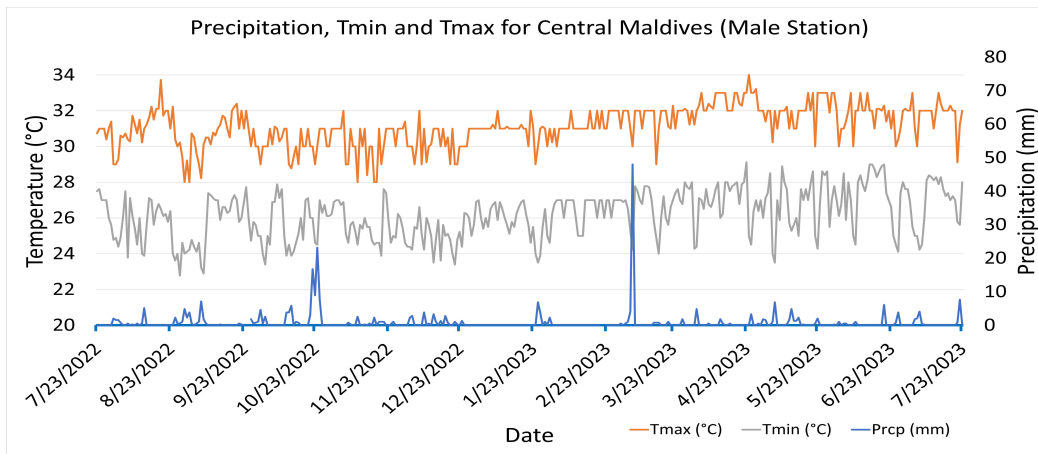
Monthly and Seasonal Monitoring

Northern Maldives:



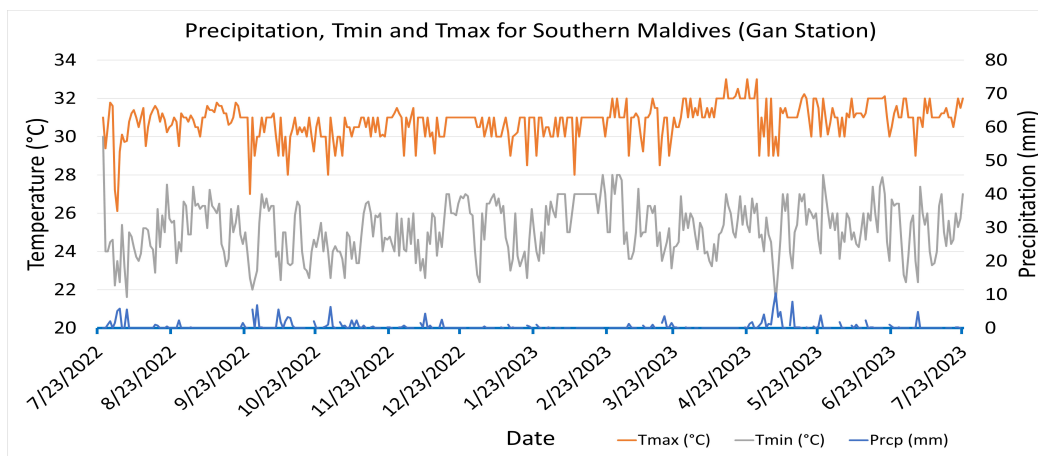
Daily Rainfall, Tmin & Tmax for the previous year in Hanimadhoo station (2022 July to 2023 July)

Central Maldives:



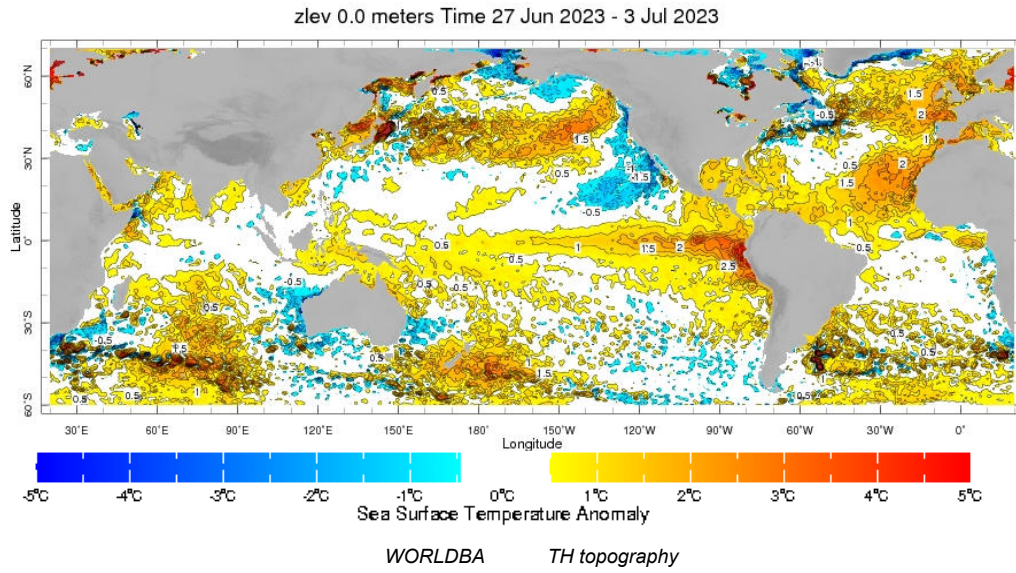
Daily Rainfall, Tmin & Tmax for the previous year in Male station (2022 July to 2023 July)

Southern Maldives:

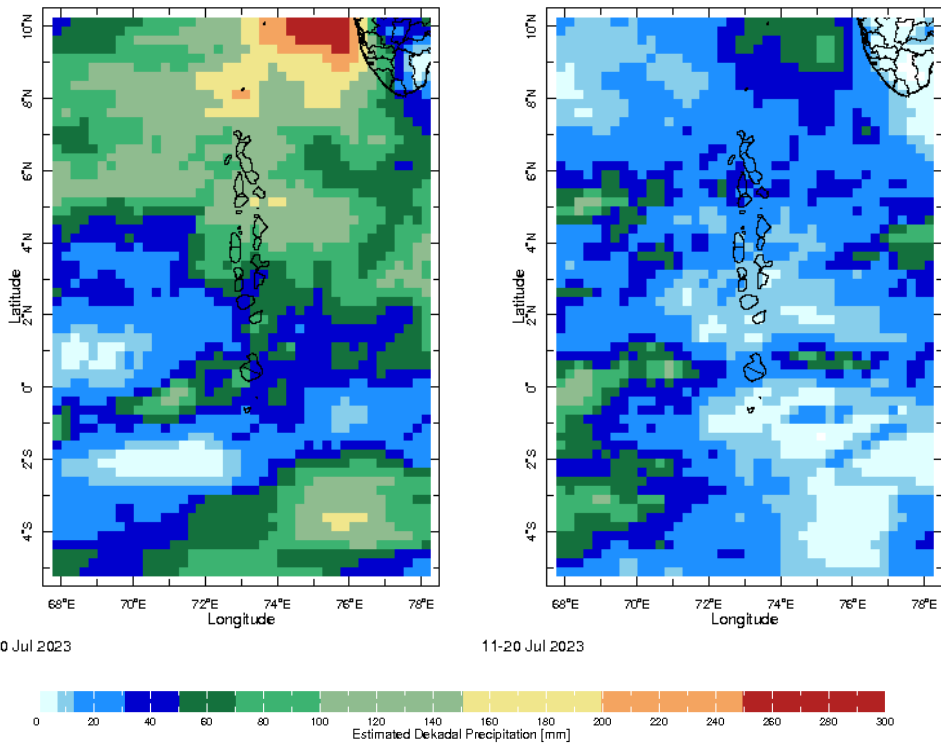


Daily Rainfall, Tmin & Tmax for the previous year in Gan station (2022 July to 2023 July)

Ocean Surface Monitoring

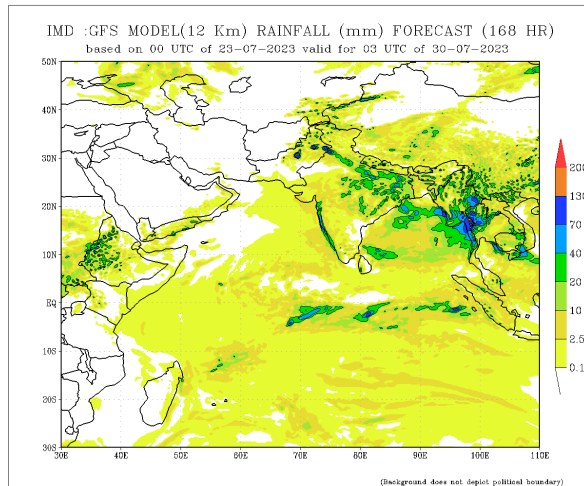
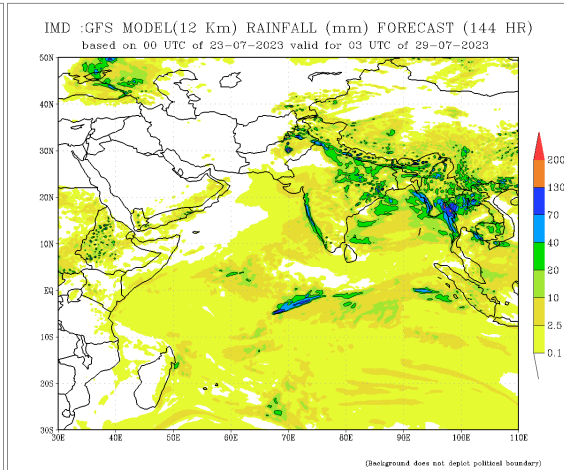
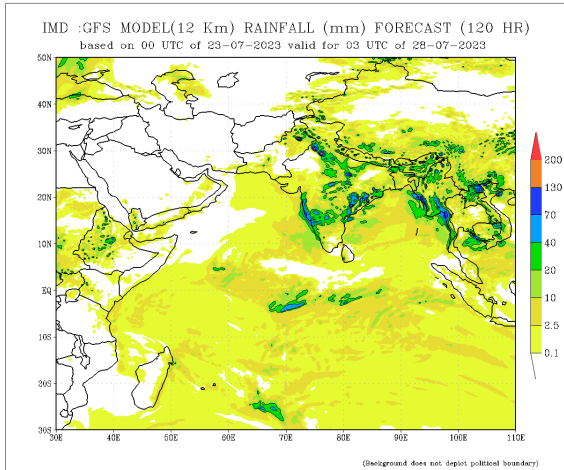
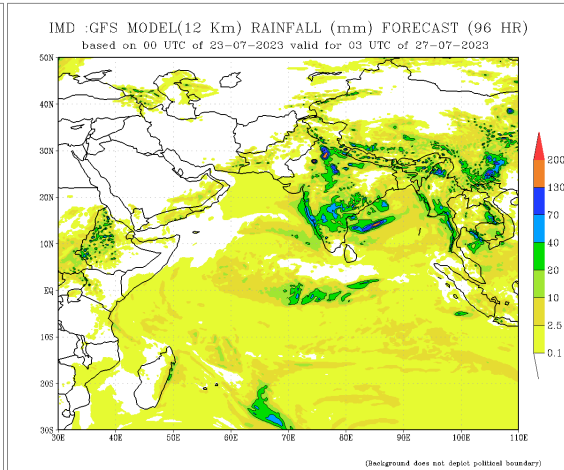
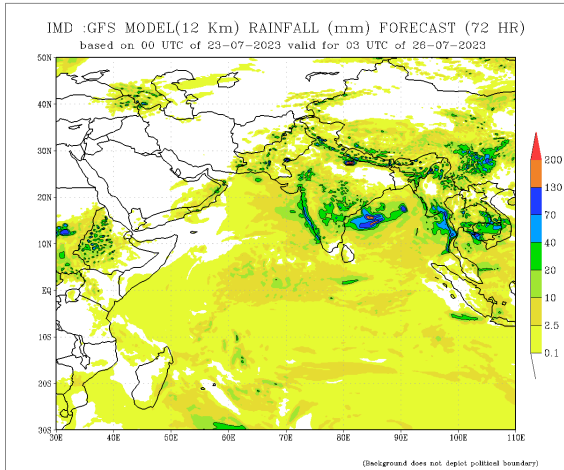
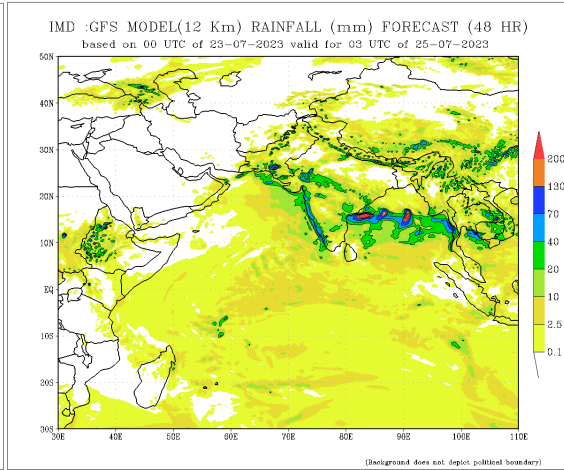
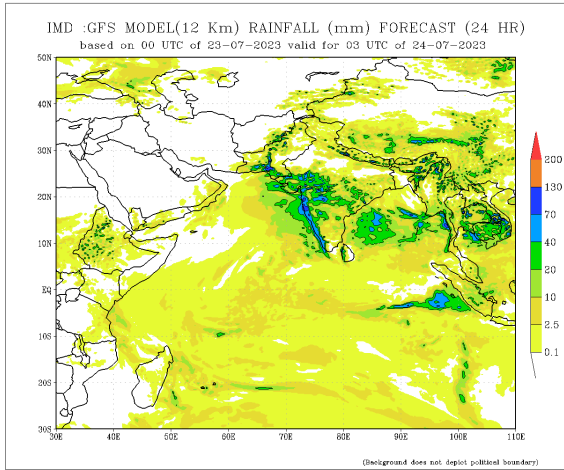


Dekadal (10 Day) Satellite Derived Rainfall Estimates

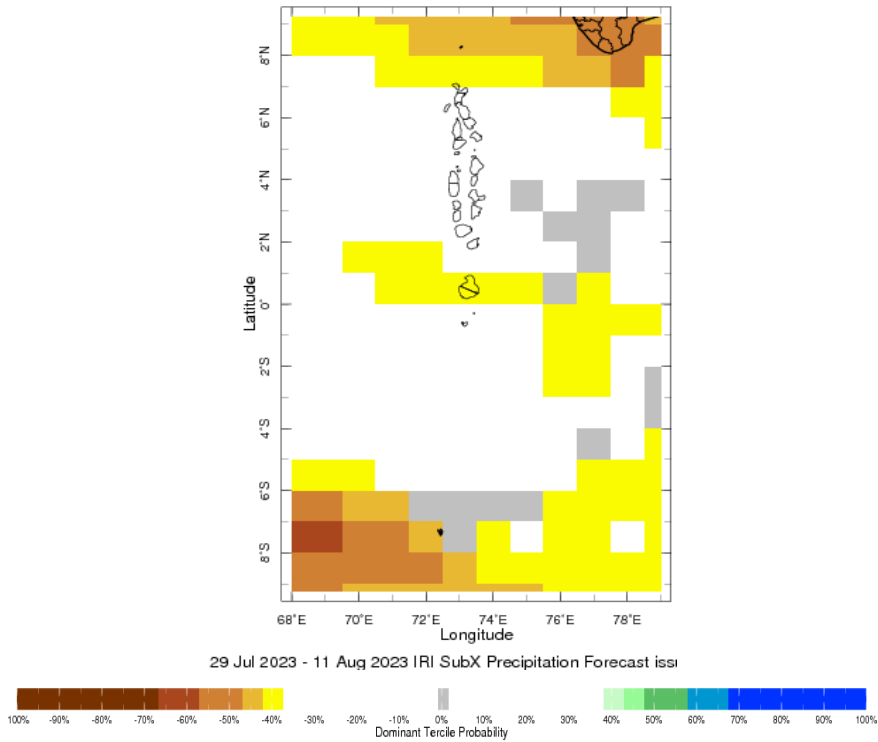


Daily Rainfall Forecast

Daily Rainfall forecasts (up to 7 days ahead) from the IMD is provided in figures below. These predictions are from the GFS (T1534) model covering the entire south Asian region.



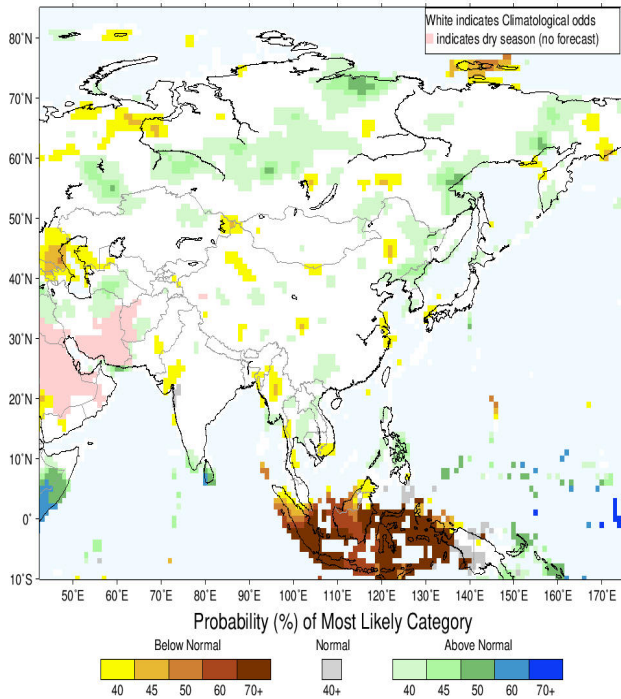
Bi-weekly Precipitation Forecast



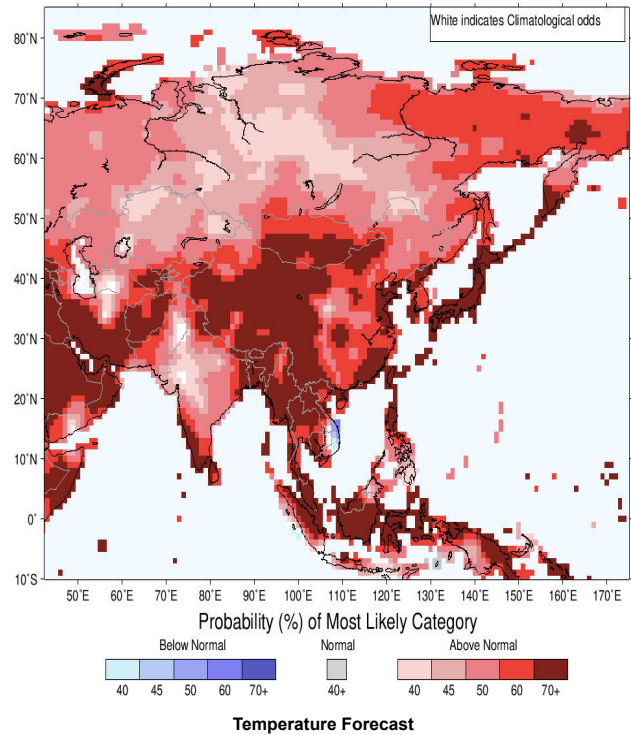
Seasonal Rainfall and Temperature Forecast

Following is the latest seasonal precipitation and temperature prediction for the next 3 months by the IRI. The color shading indicates the probability of the most dominant tercile -- that is, the tercile having the highest forecast probability. The color bar alongside the map defines these dominant tercile probability levels. The upper side of the color bar shows the colors used for increasingly strong probabilities when the dominant tercile is the above-normal tercile, while the lower side shows likewise for the below-normal tercile. The gray color indicates an enhanced probability for the near-normal tercile (nearly always limited to 40%).

IRI Multi-Model Probability Forecast for Precipitation for August-September-October 2023, Issued July 2023



IRI Multi-Model Probability Forecast for Temperature for August-September-October 2023, Issued July 2023



Subscribe to our Monthly Maldives Newsletter

email address

Subscribe

Follow @fectmv

Contact Us
email: fectmv@gmail.com
phone: (+96) 07 788010
blog: www.fectmv.blogspot.com

Foundation for Environment, Climate & Technology,
REM, Madhrasaadhoshuge,
Henneiru, Hadheebee Magu,
Male', 20184,
Maldives