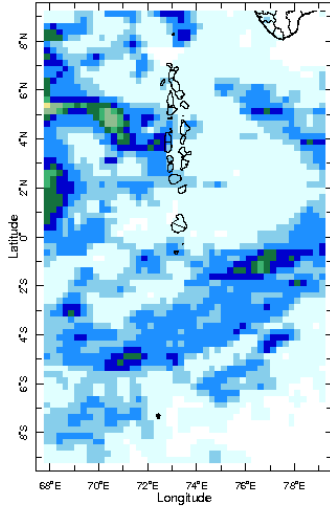


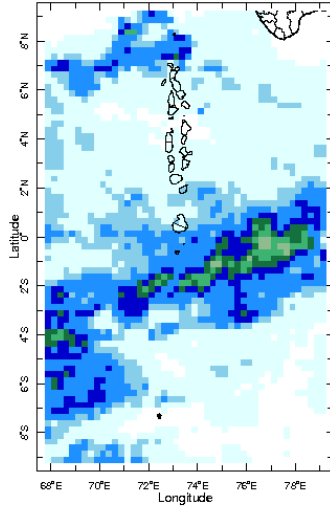


**Daily Rainfall Monitoring**

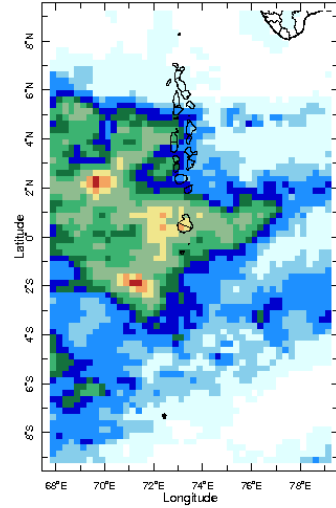
The following figures show the observed rainfall in the last 15 days in Maldives.



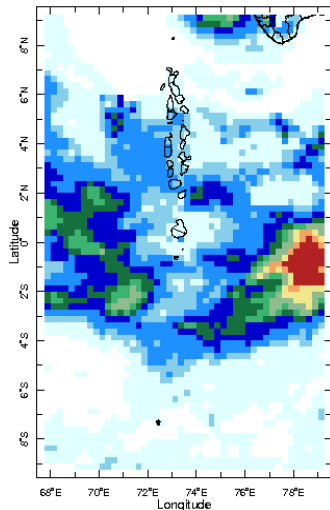
1 May 2022



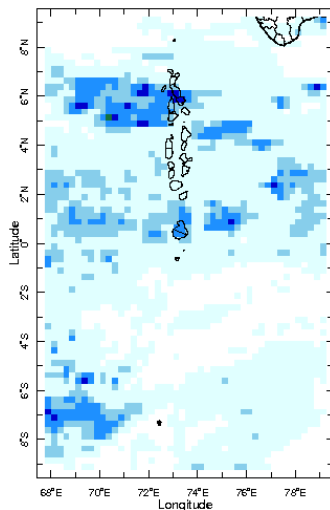
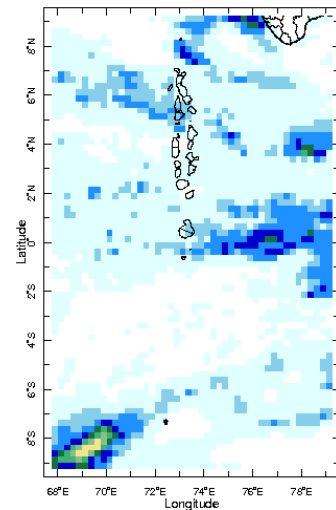
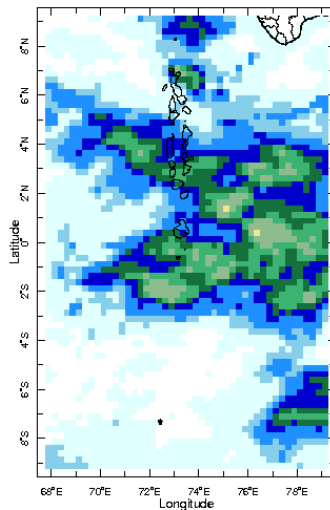
2 May 2022



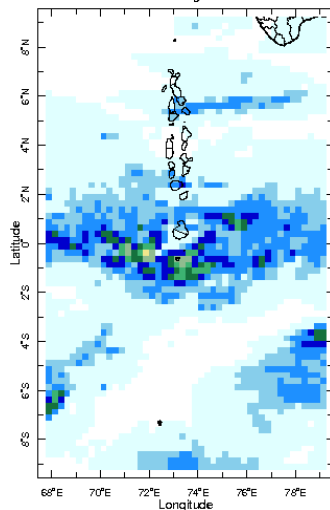
3 May 2022



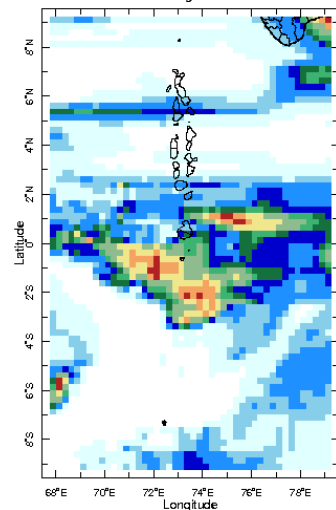
4 May 2022



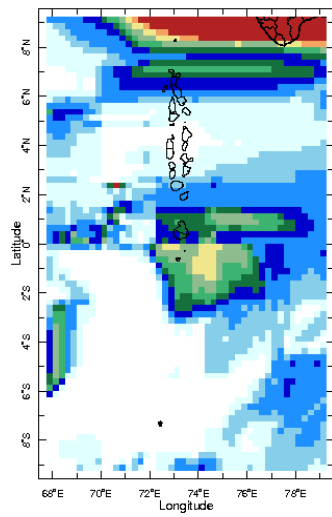
7 May 2022



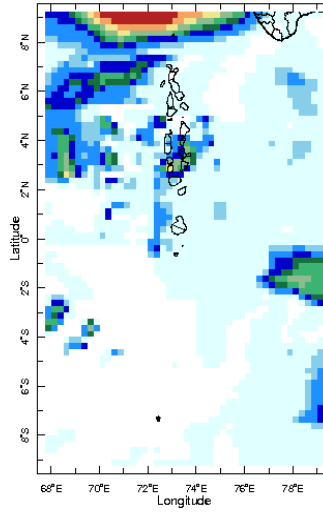
8 May 2022



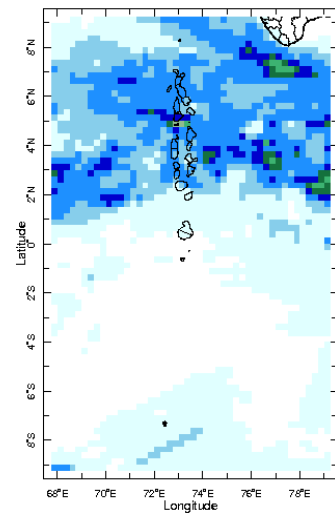
9 May 2022



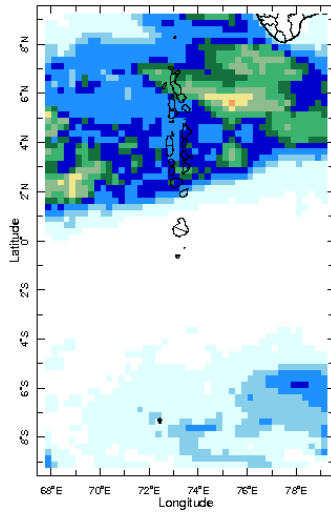
10 May 2022



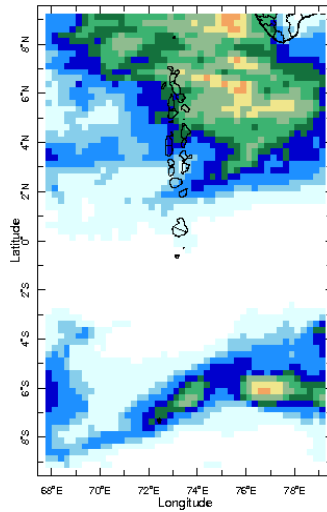
11 May 2022



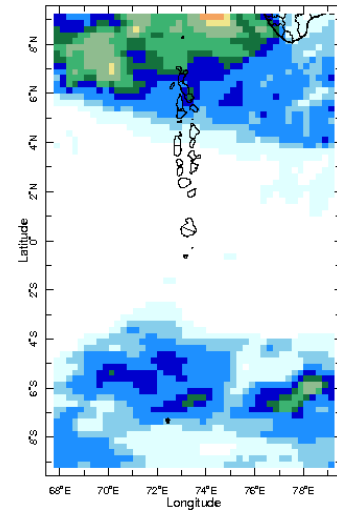
12 May 2022



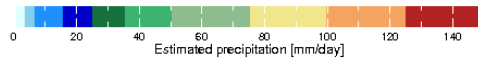
13 May 2022



14 May 2022

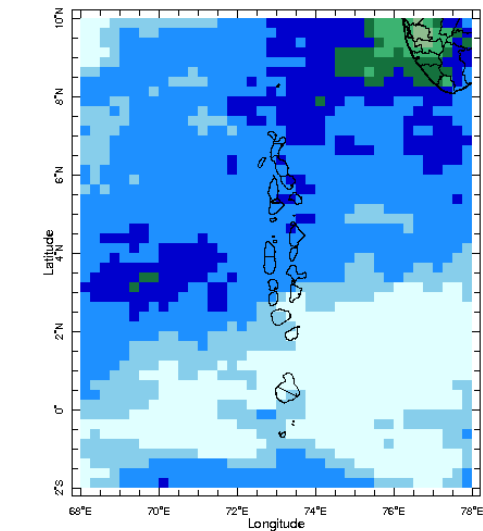


15 May 2022

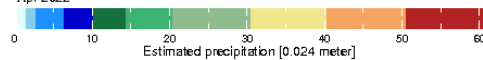


## Monthly Rainfall Monitoring

The figure shows the average observed rainfall in the previous month.



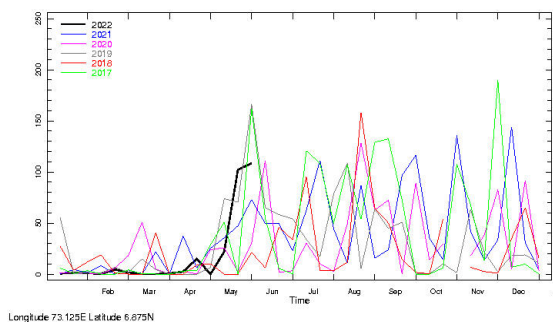
Apr 2022



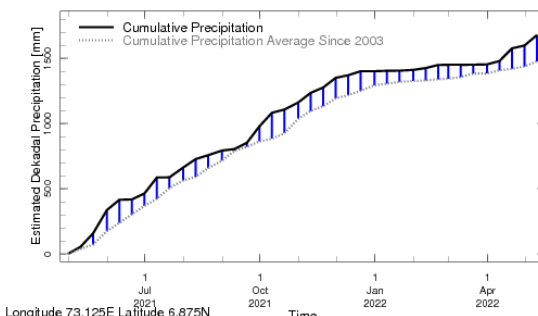
Monthly Average

# Monthly and Seasonal Monitoring

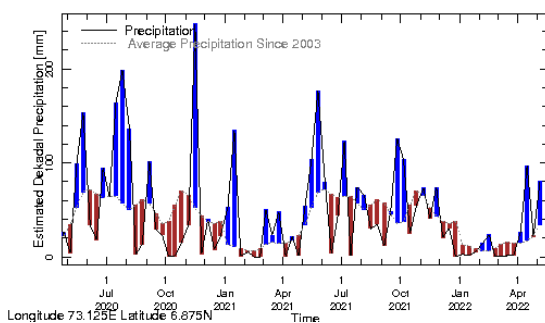
## Northern Maldives:



Rainfall in the current year (black) compared to rainfall in previous 5 years

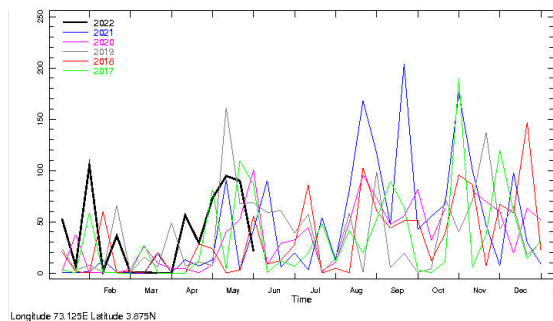


Rainfall of past 365 days (black) compared to average rainfall since 2003.

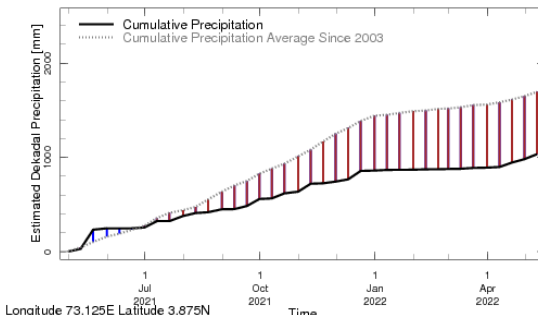


Rainfall in the past 5 years with above-average rainfall hatched in blue and below-average hatched in brown

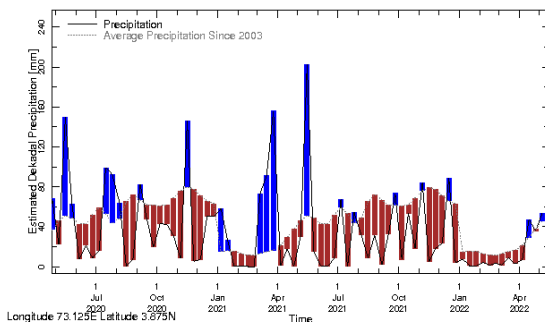
## Central Maldives:



Rainfall in the current year (black) compared to rainfall in previous 5 years

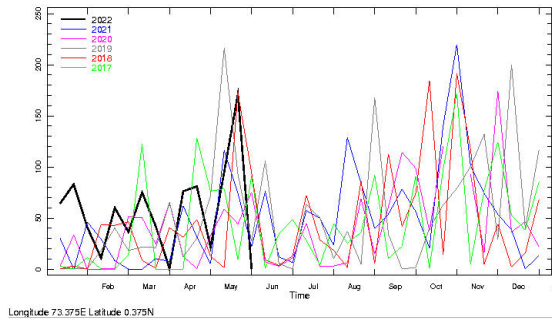


Rainfall of past 365 days (black) compared to average rainfall since 2003.

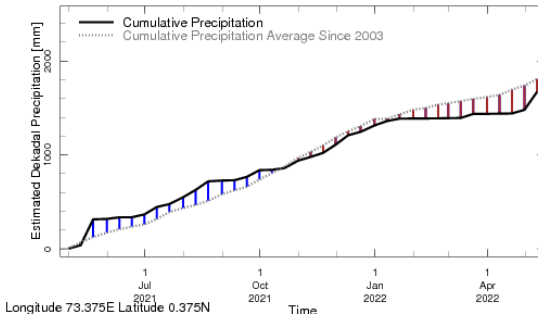


Rainfall in the past 5 years with above-average rainfall hatched in blue and below-average hatched in brown

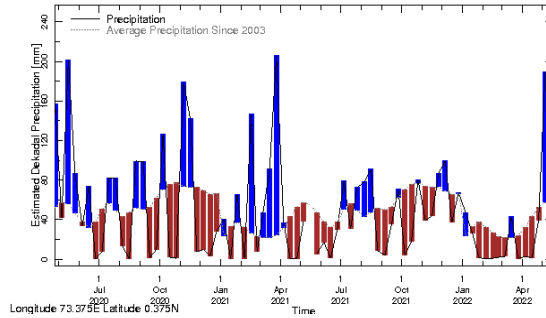
**Southern Maldives:**



**Rainfall in the current year (black) compared to rainfall in previous 5 years**

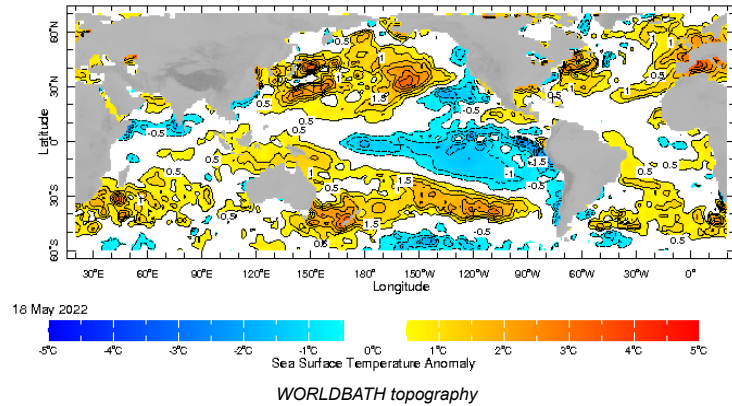


**Rainfall of past 365 days (black) compared to average rainfall since 2003.**

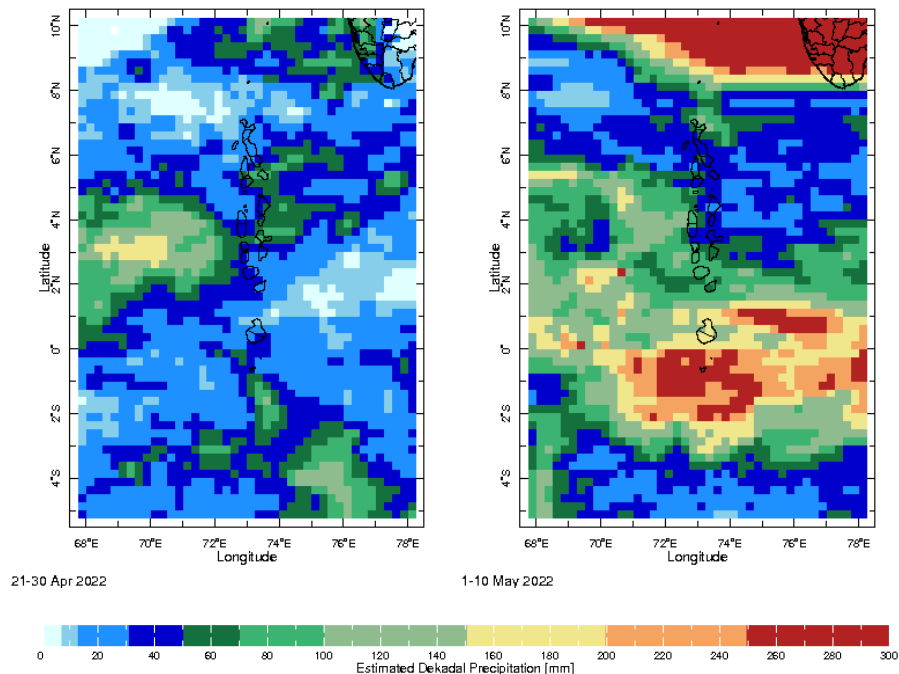


**Rainfall in the past 5 years with above-average rainfall hatched in blue and below-average hatched in brown**

**Ocean Surface Monitoring**

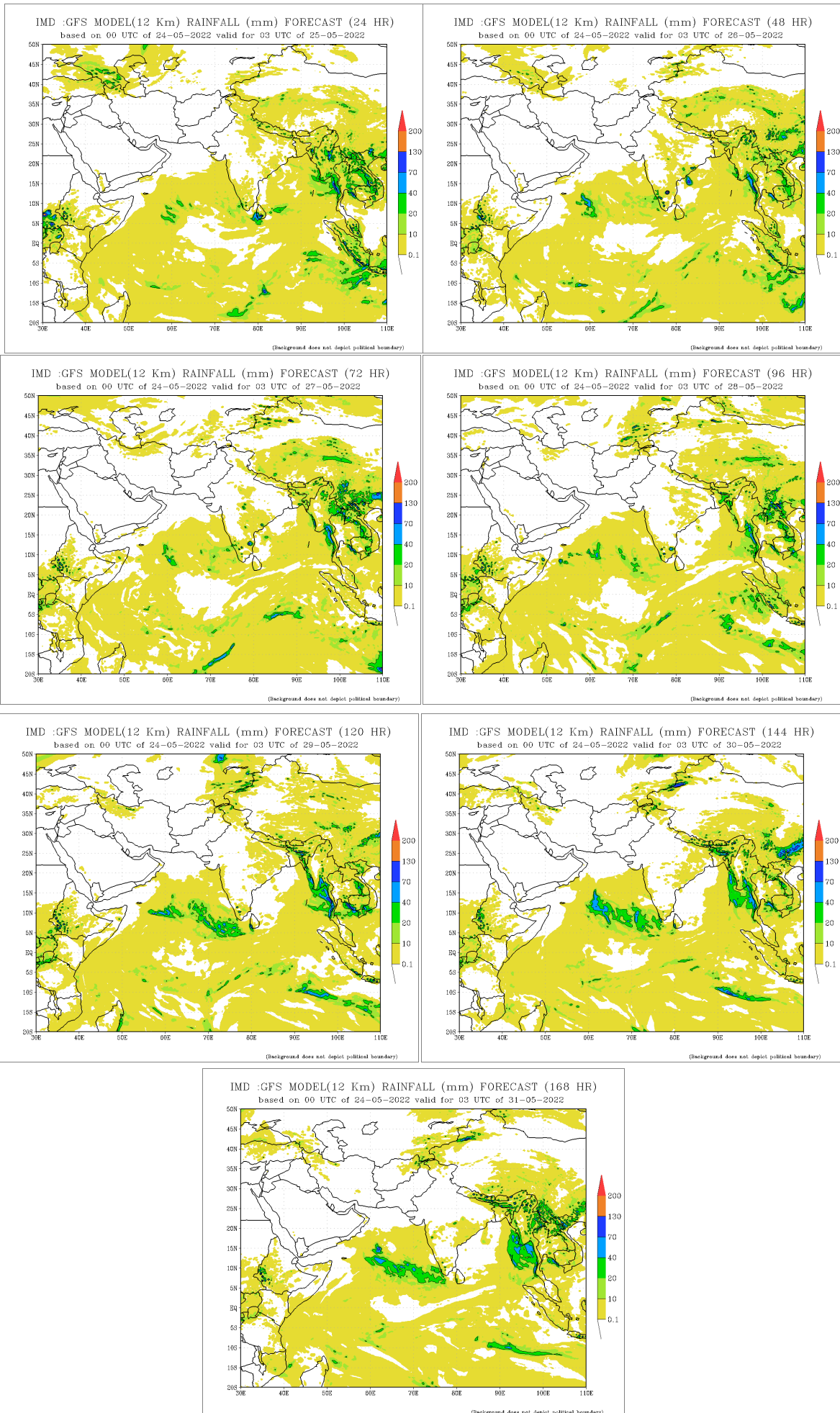


**Dekadal (10 Day) Satellite Derived Rainfall Estimates**

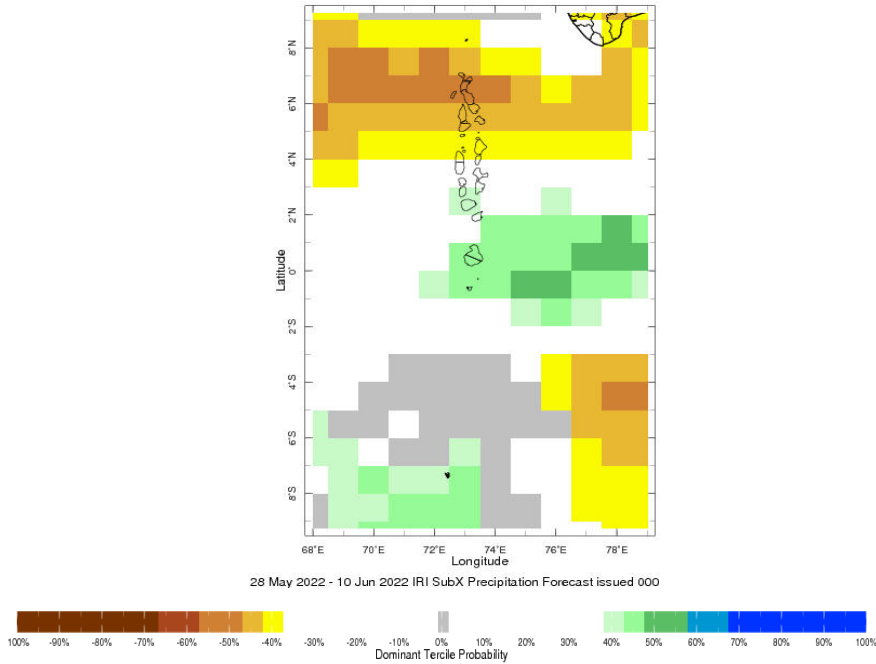


# Daily Rainfall Forecast

Daily Rainfall forecasts (up to 7 days ahead) from the IMD is provided in figures below. These predictions are from the GFS (T1534) model covering the entire south Asian region.



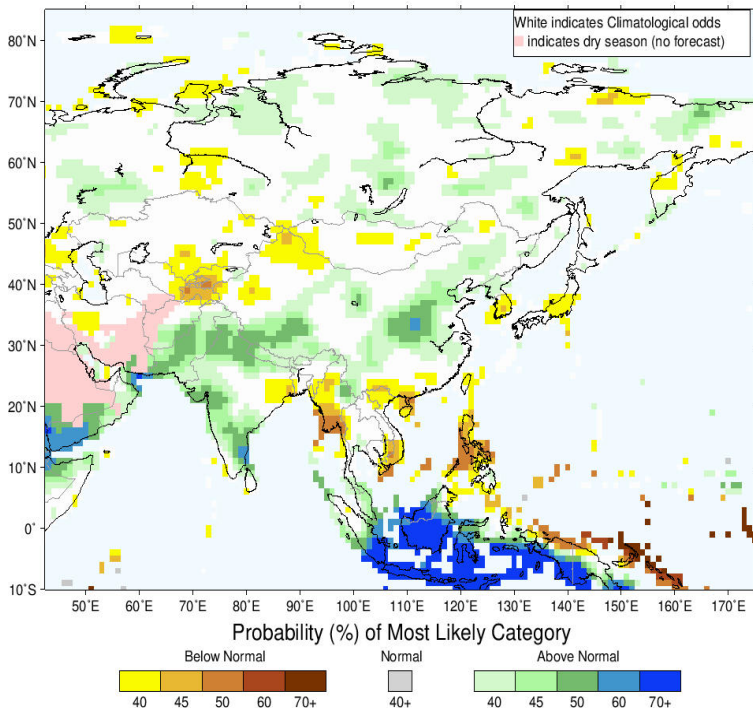
# Bi-weekly Precipitation Forecast



## Seasonal Rainfall and Temperature Forecast

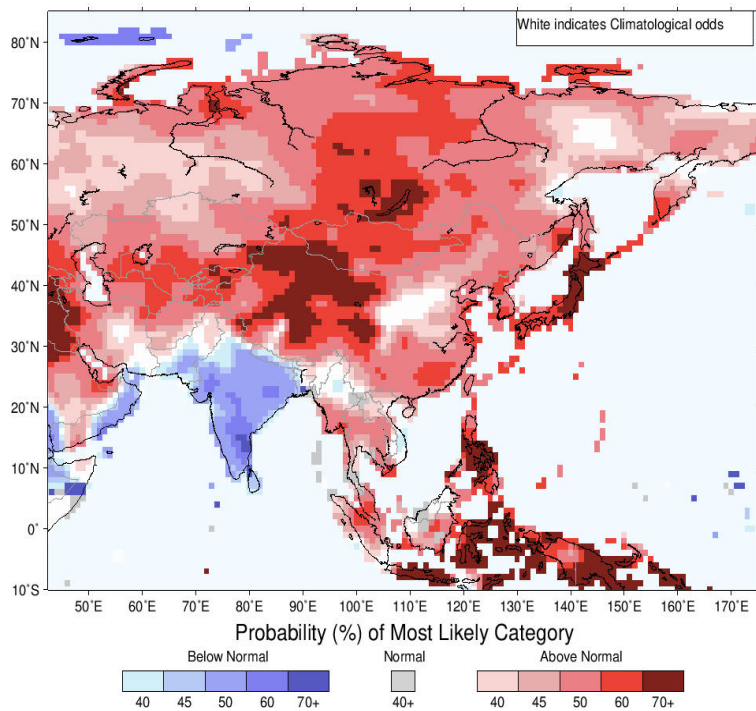
Following is the latest seasonal precipitation and temperature prediction for the next 3 months by the IRI. The color shading indicates the probability of the most dominant tercile – that is, the tercile having the highest forecast probability. The color bar alongside the map defines these dominant tercile probability levels. The upper side of the color bar shows the colors used for increasingly strong probabilities when the dominant tercile is the above-normal tercile, while the lower side shows likewise for the below-normal tercile. The gray color indicates an enhanced probability for the near-normal tercile (nearly always limited to 40%).

IRI Multi-Model Probability Forecast for Precipitation for June–July–August 2022, Issued May 2022



Precipitation Forecast

IRI Multi-Model Probability Forecast for Temperature for June–July–August 2022, Issued May 2022



Temperature Forecast

Subscribe to our Monthly Maldives Newsletter

Subscribe

Follow @fectmv

Contact Us  
email: [fectmv@gmail.com](mailto:fectmv@gmail.com)  
phone: (+96) 07 788010  
blog: [www.fectmv.blogspot.com](http://www.fectmv.blogspot.com)

Foundation for Environment, Climate & Technology,  
REM, Madhrasaadhoshuge,  
Henneiru, Hadheebee Magu,  
Male', 20184,  
Maldives