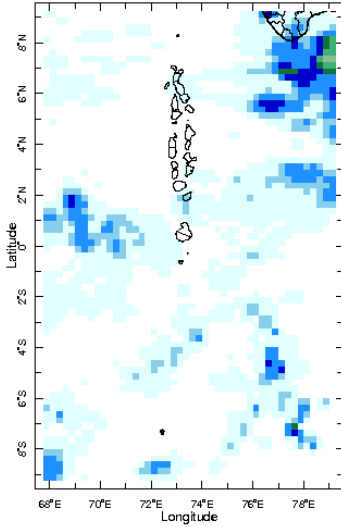


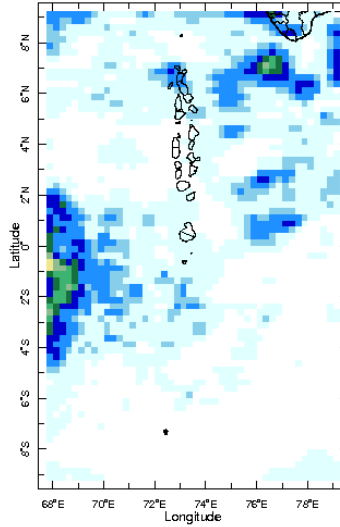


## Daily Rainfall Monitoring

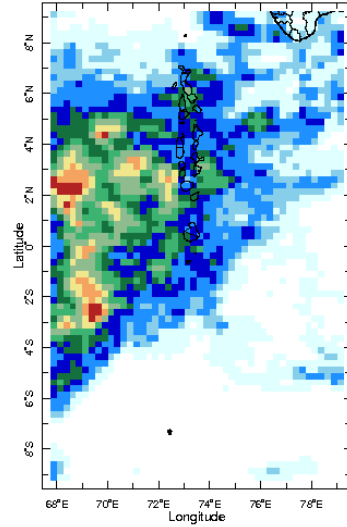
The following figures show the observed rainfall in the last 15 days in Maldives.



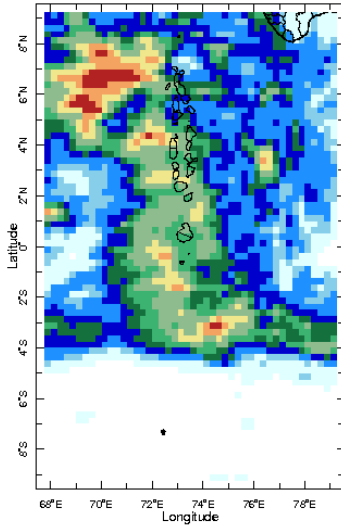
8 May 2021



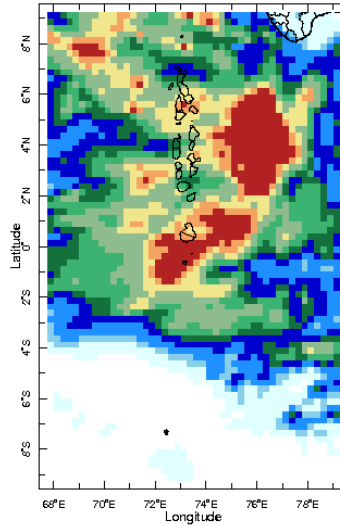
9 May 2021



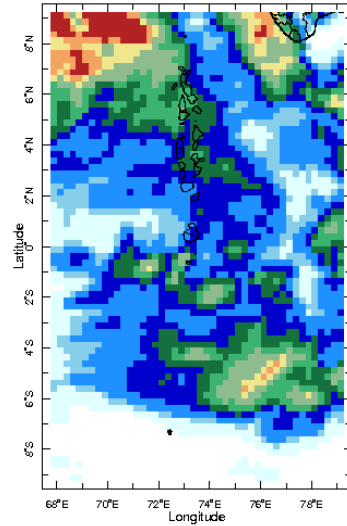
10 May 2021



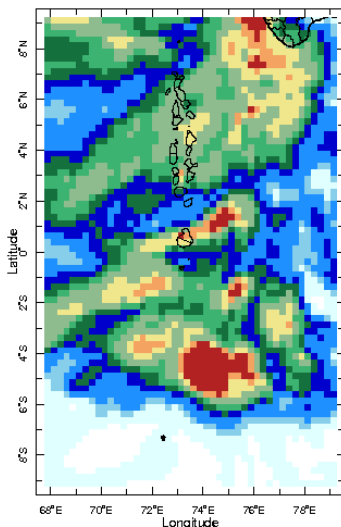
11 May 2021



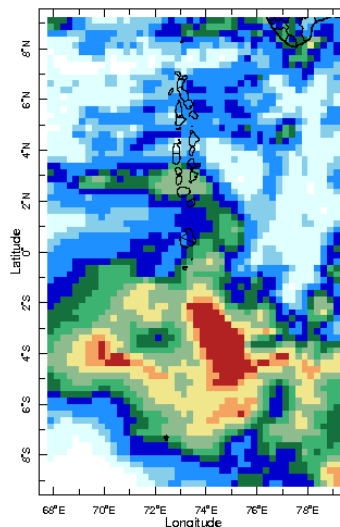
12 May 2021



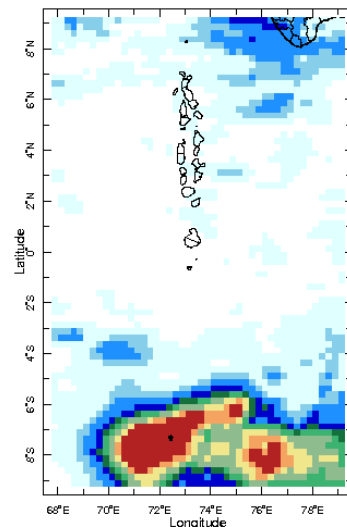
13 May 2021



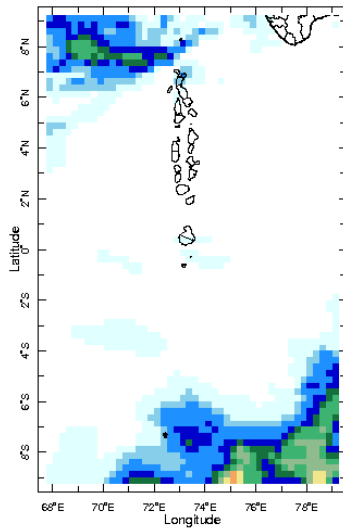
14 May 2021



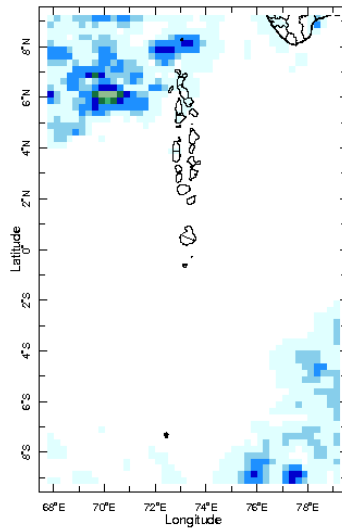
15 May 2021



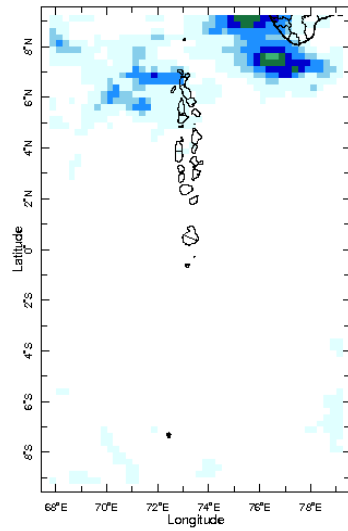
16 May 2021



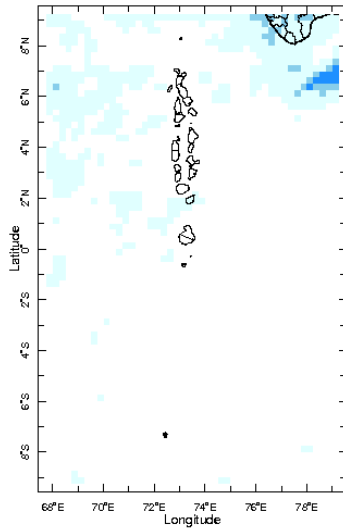
17 May 2021



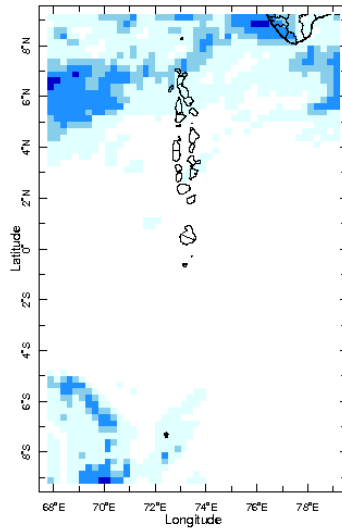
18 May 2021



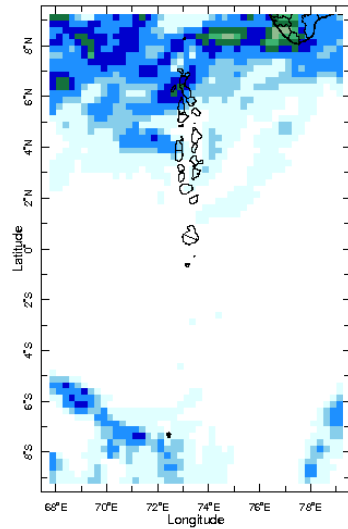
19 May 2021



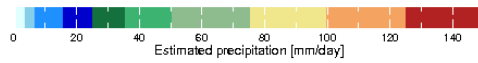
20 May 2021



21 May 2021

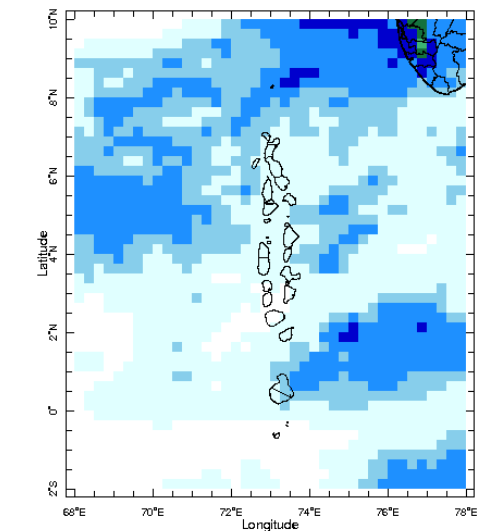


22 May 2021

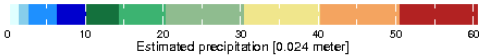


## Monthly Rainfall Monitoring

The figure shows the average observed rainfall in the previous month.



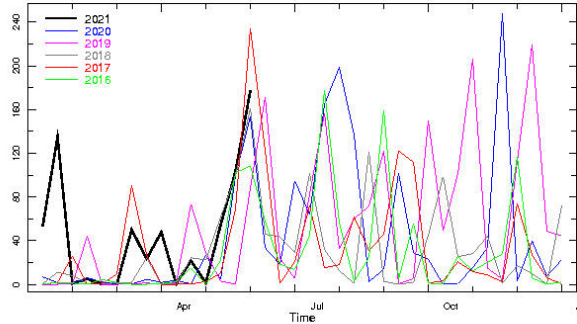
Apr 2021



Monthly Average

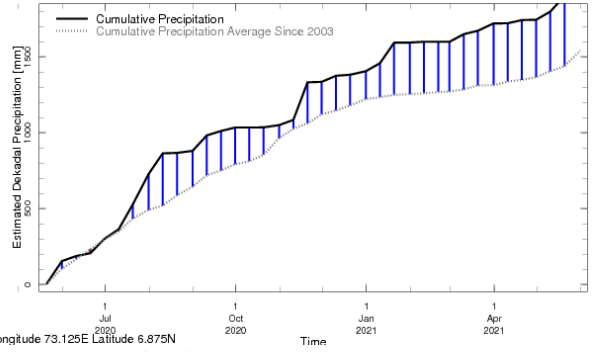
# Monthly and Seasonal Monitoring

## Northern Maldives:



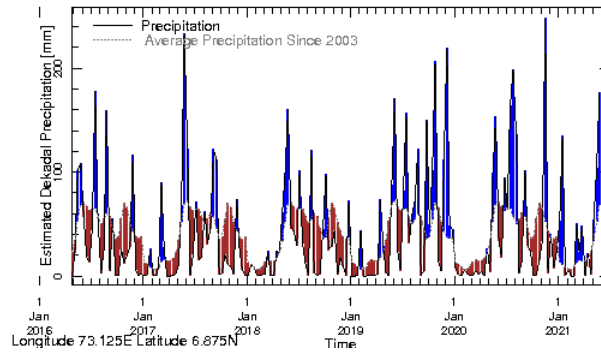
Longitude 73.125E Latitude 6.875N

**Rainfall in the current year (black) compared to rainfall in previous 5 years**



Longitude 73.125E Latitude 6.875N

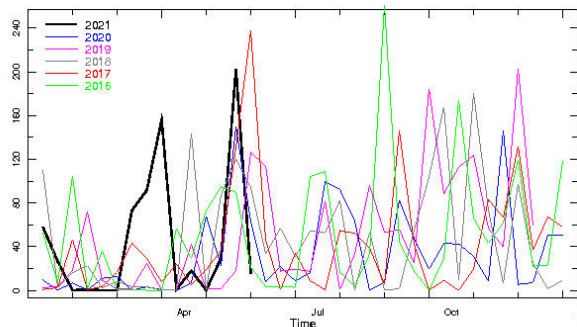
**Rainfall of past 365 days (black) compared to average rainfall since 2003.**



Longitude 73.125E Latitude 6.875N

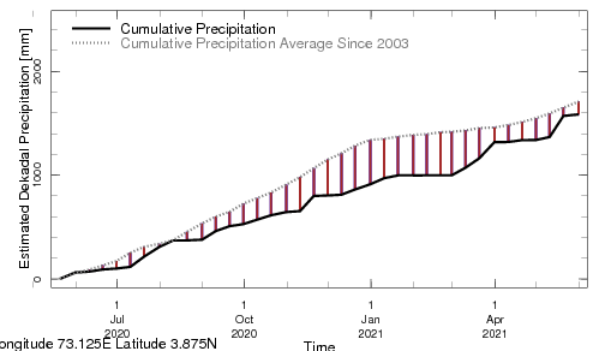
**Rainfall in the past 5 years with above-average rainfall hatched in blue and below-average hatched in brown**

## Central Maldives:



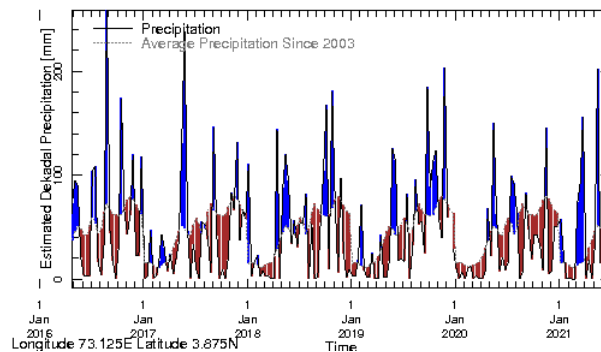
Longitude 73.125E Latitude 3.875N

**Rainfall in the current year (black) compared to rainfall in previous 5 years**



Longitude 73.125E Latitude 3.875N

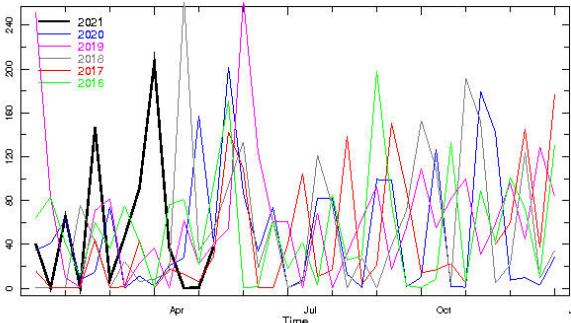
**Rainfall of past 365 days (black) compared to average rainfall since 2003.**



Longitude 73.125E Latitude 3.875N

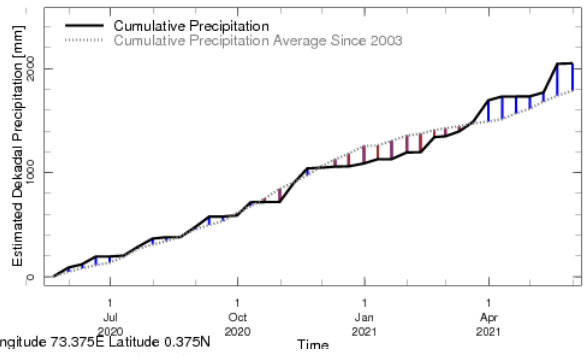
**Rainfall in the past 5 years with above-average rainfall hatched in blue and below-average hatched in brown**

## Southern Maldives:



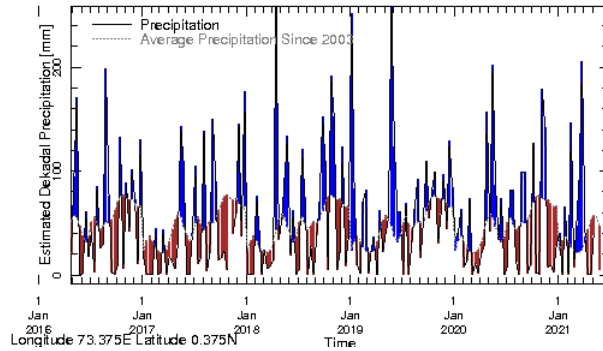
Longitude 73.375E Latitude 0.375N

Rainfall in the current year (black) compared to rainfall in previous 5 years



Longitude 73.375E Latitude 0.375N

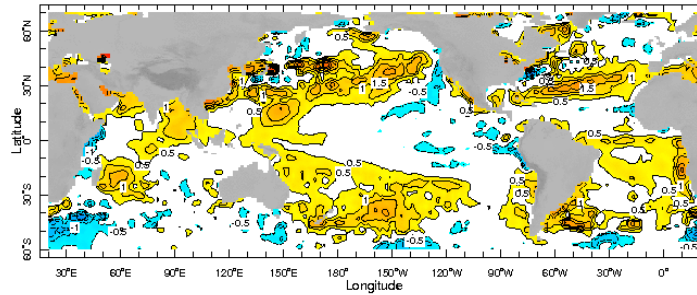
Rainfall of past 365 days (black) compared to average rainfall since 2003.



Longitude 73.375E Latitude 0.375N

Rainfall in the past 5 years with above-average rainfall hatched in blue and below-average hatched in brown

## Ocean Surface Monitoring



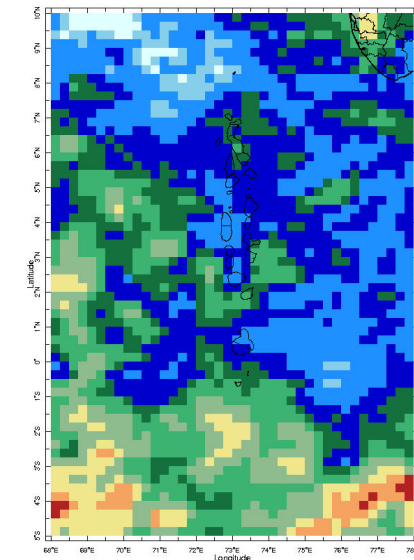
12 May 2021

-5°C -4°C -3°C -2°C -1°C 0°C 1°C 2°C 3°C 4°C 5°C

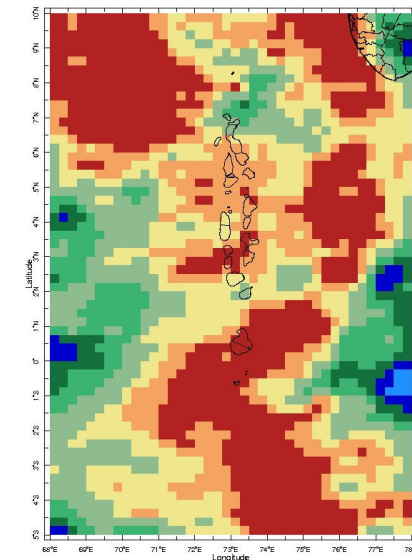
Sea Surface Temperature Anomaly

WORLDWATCH topography

## Dekadal (10 Day) Satellite Derived Rainfall Estimates



1-10 May 2021



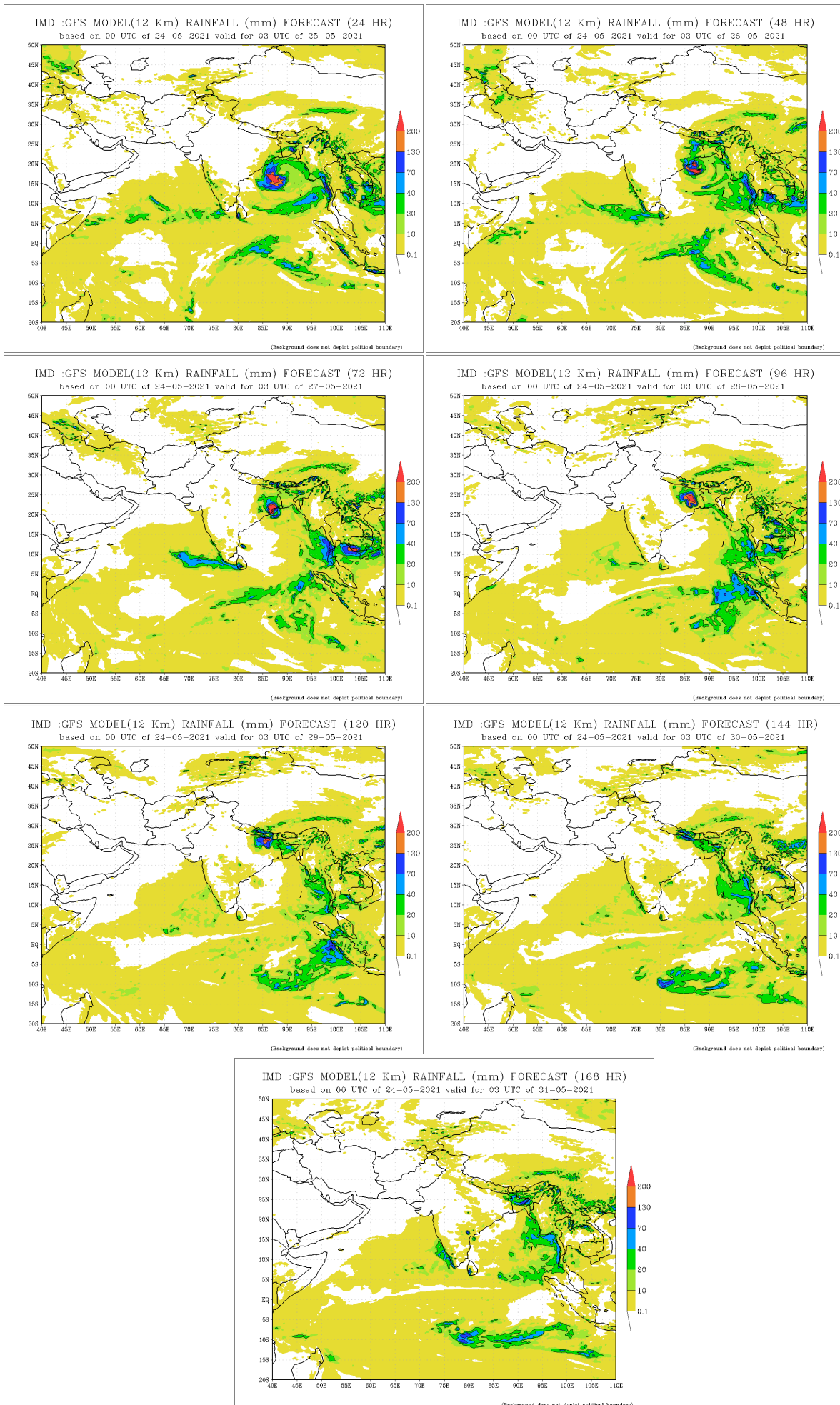
11-20 May 2021

0 20 40 60 80 100 120 140 160 180 200 220 240 260 280 300

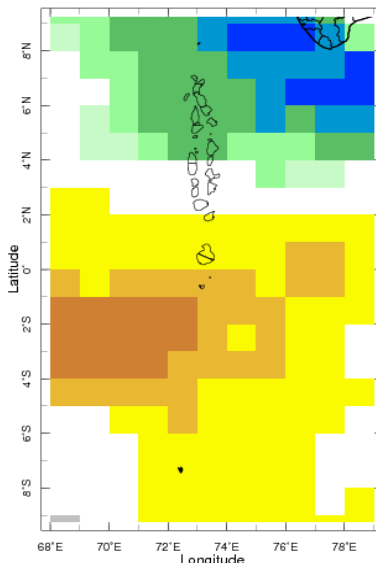
Estimated Dekadal Precipitation [mm]

# Daily Rainfall Forecast

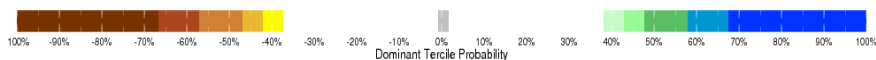
Daily Rainfall forecasts (up to 7 days ahead) from the IMD is provided in figures below. These predictions are from the GFS (T1534) model covering the entire south Asian region.



# Weekly Precipitation Forecast



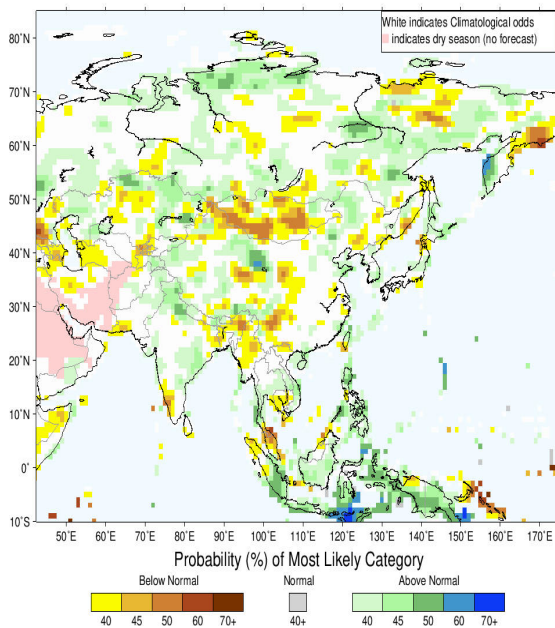
22-28 May 2021 IRI SubX Precipitation Forecast issued 0000 :



## Seasonal Rainfall and Temperature Forecast

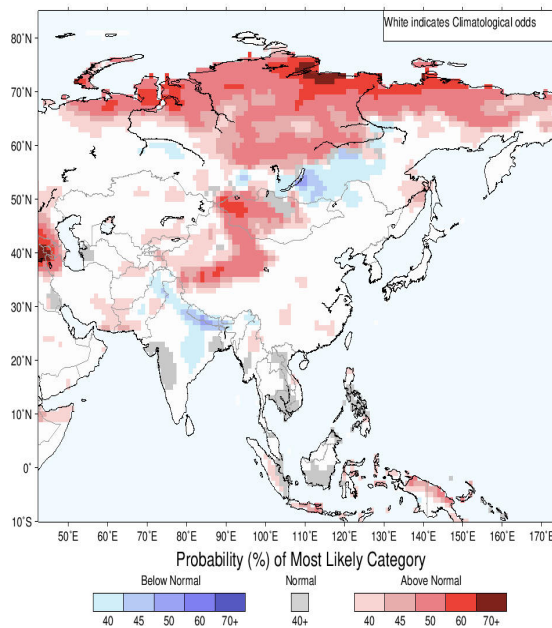
Following is the latest seasonal precipitation and temperature prediction for the next 3 months by the IRI. The color shading indicates the probability of the most dominant tercile -- that is, the tercile having the highest forecast probability. The color bar alongside the map defines these dominant tercile probability levels. The upper side of the color bar shows the colors used for increasingly strong probabilities when the dominant tercile is the above-normal tercile, while the lower side shows likewise for the below-normal tercile. The gray color indicates an enhanced probability for the near-normal tercile (nearly always limited to 40%).

IRI Multi-Model Probability Forecast for Precipitation for June-July-August 2021, Issued May 2021



Precipitation Forecast

IRI Multi-Model Probability Forecast for Temperature for June-July-August 2021, Issued May 2021



Temperature Forecast

Subscribe to our Monthly Maldives Newsletter

email address

Subscribe

Follow @fectmv

Contact Us  
 email: [fectmv@gmail.com](mailto:fectmv@gmail.com)  
 phone: (+96) 07 788010  
 blog: [www.lectmv.blogspot.com](http://www.lectmv.blogspot.com)

Foundation for Environment, Climate & Technology,  
 REM, Madhrasadhoshuge,  
 Henvveiru, Hadheebee Magu,  
 Male', 20184,  
 Maldives