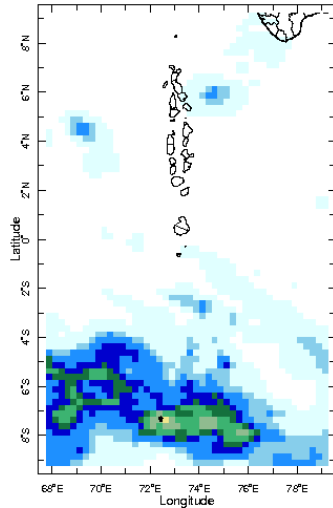


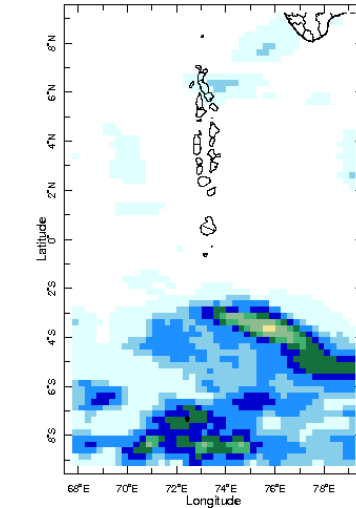


## Daily Rainfall Monitoring

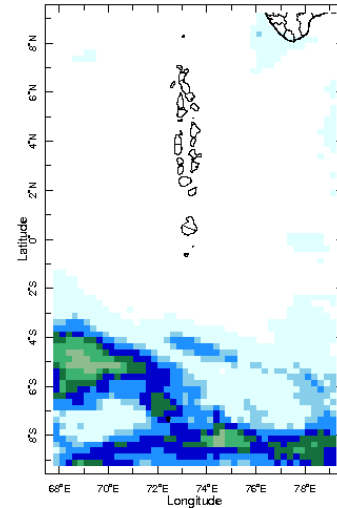
The following figures show the observed rainfall in the last 15 days in Maldives.



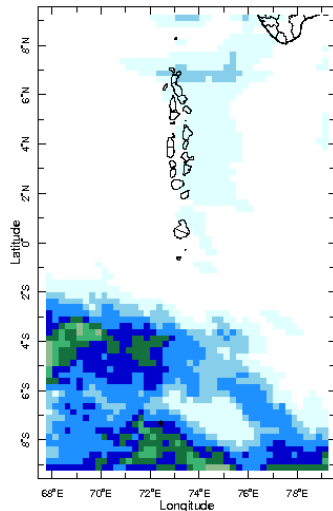
6 Feb 2022



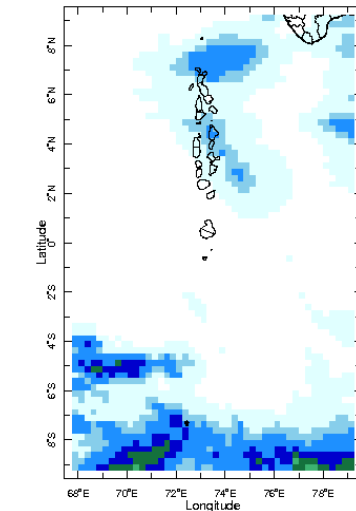
7 Feb 2022



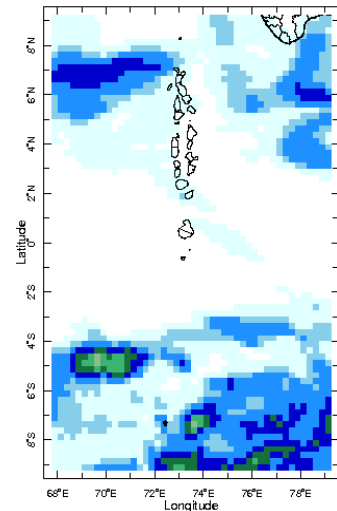
8 Feb 2022



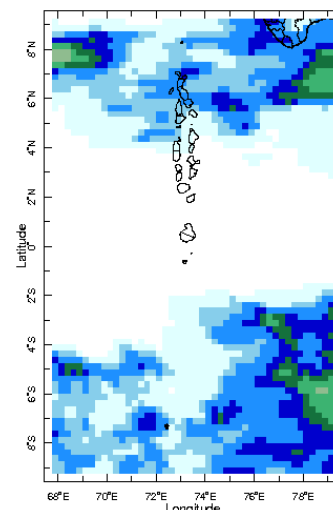
9 Feb 2022



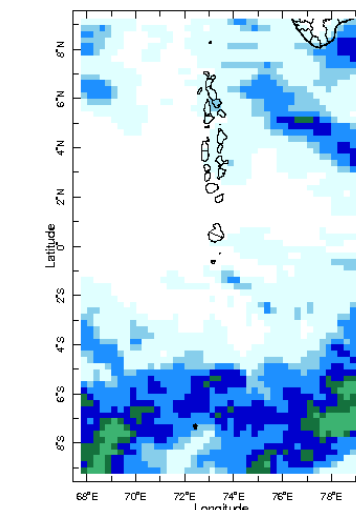
10 Feb 2022



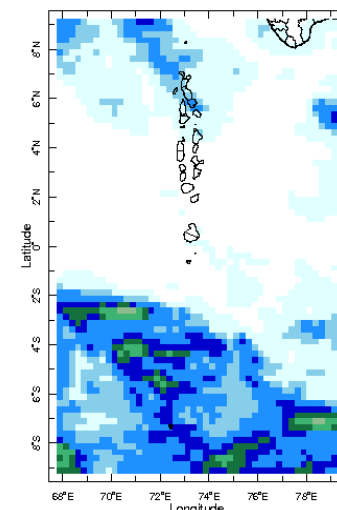
11 Feb 2022



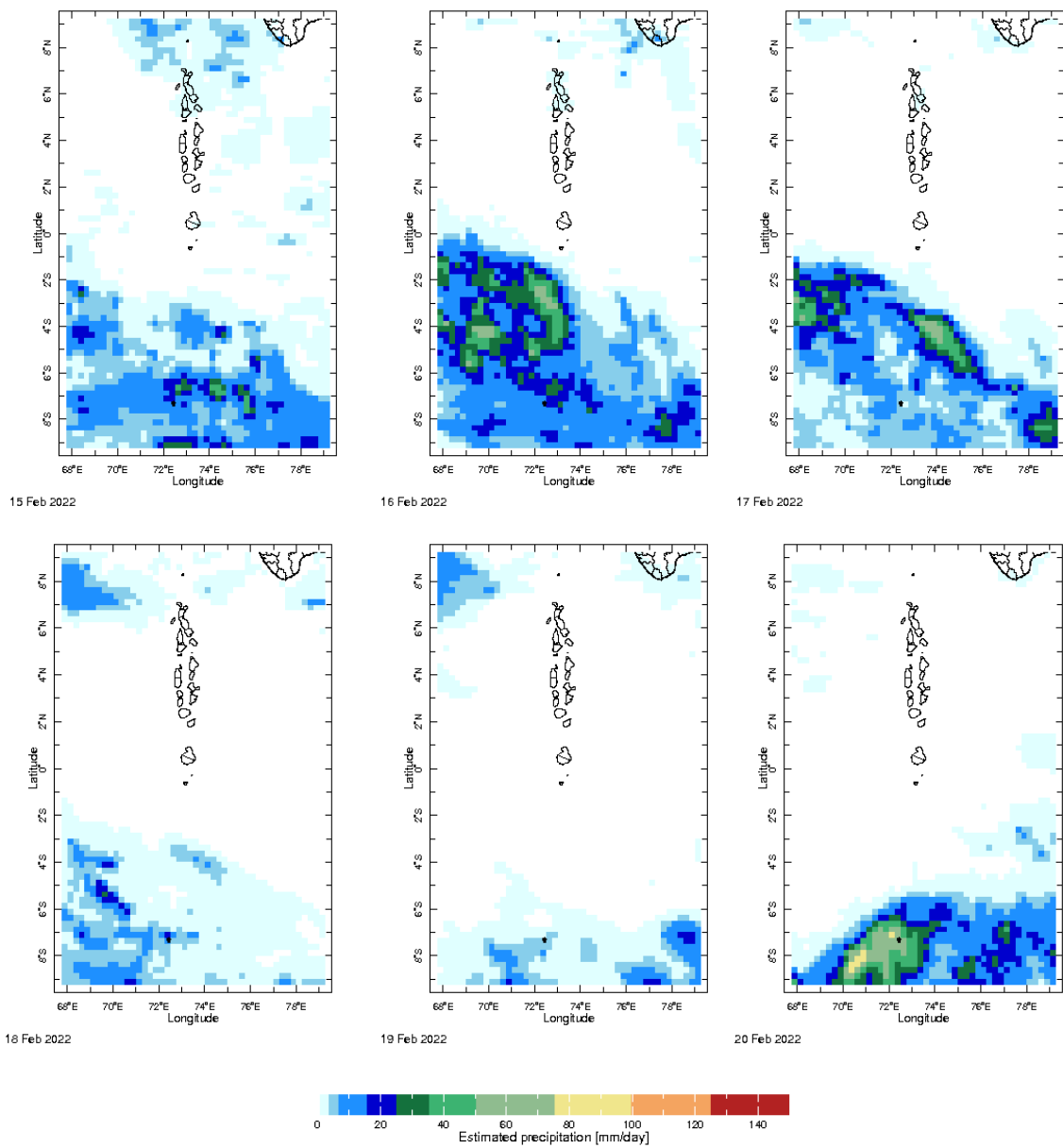
12 Feb 2022



13 Feb 2022

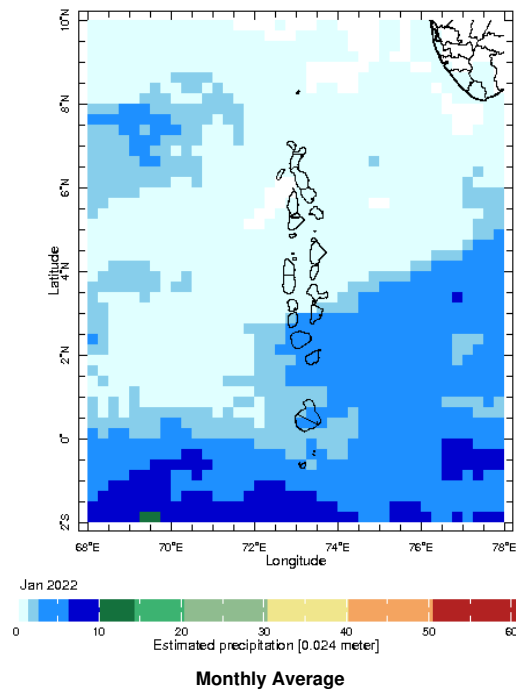


14 Feb 2022



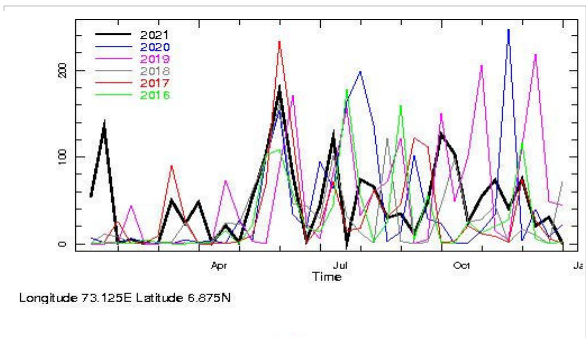
## Monthly Rainfall Monitoring

The figure shows the average observed rainfall in the previous month.

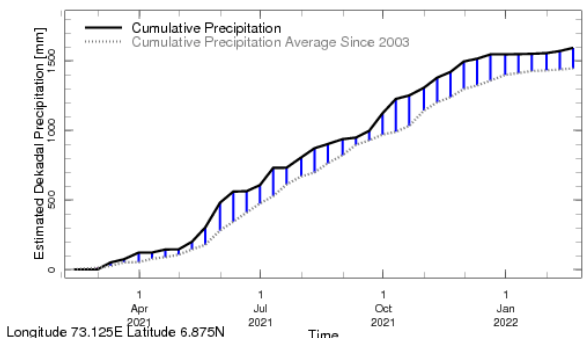


Monthly and Seasonal Monitoring

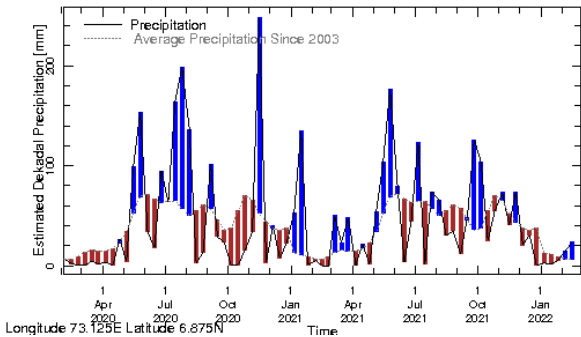
Northern Maldives:



Rainfall in the current year (black) compared to rainfall in previous 5 years

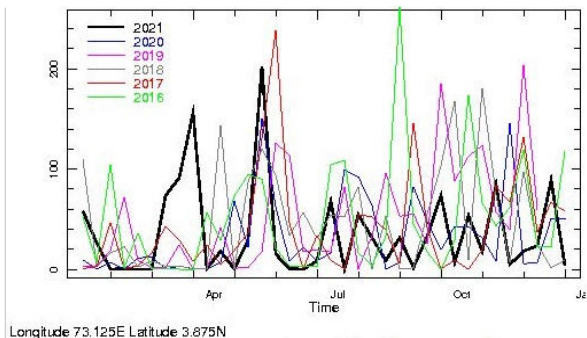


Rainfall of past 365 days (black) compared to average rainfall since 2003.

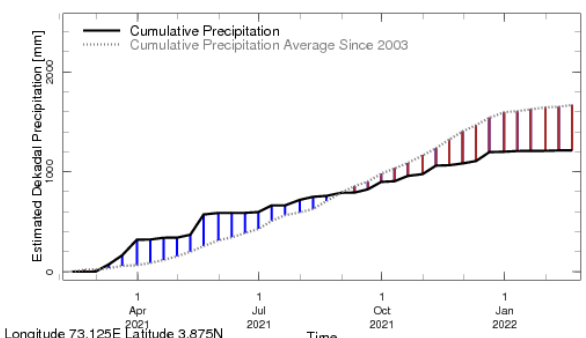


Rainfall in the past 5 years with above-average rainfall hatched in blue and below-average hatched in brown

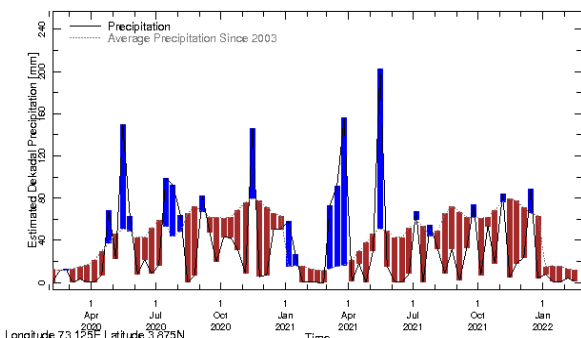
Central Maldives:



Rainfall in the current year (black) compared to rainfall in previous 5 years

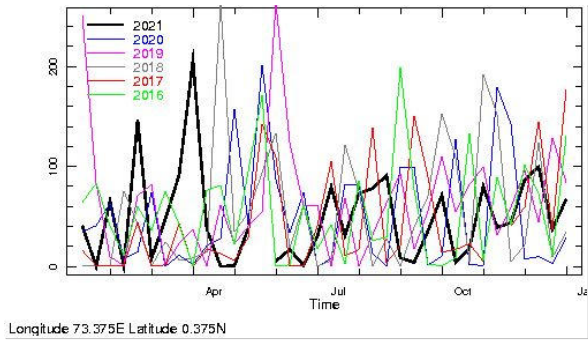


Rainfall of past 365 days (black) compared to average rainfall since 2003.

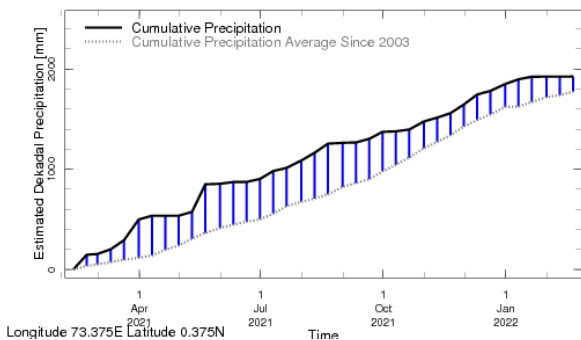


Rainfall in the past 5 years with above-average rainfall hatched in blue and below-average hatched in brown

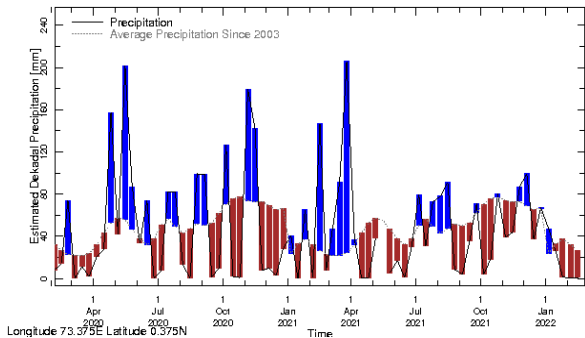
Southern Maldives:



Rainfall in the current year (black) compared to rainfall in previous 5 years

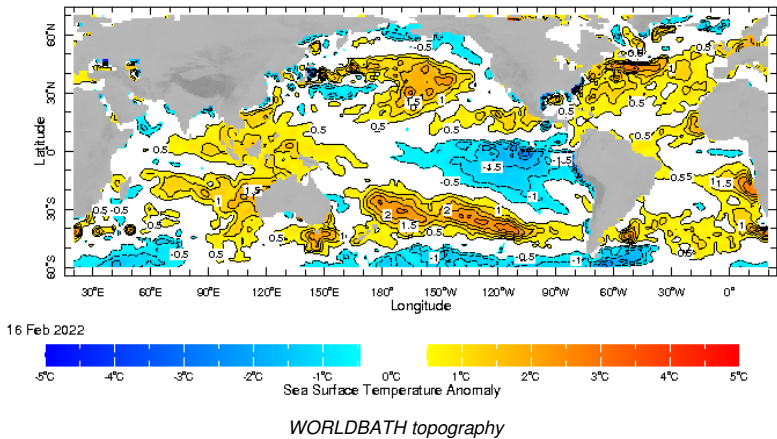


Rainfall of past 365 days (black) compared to average rainfall since 2003.

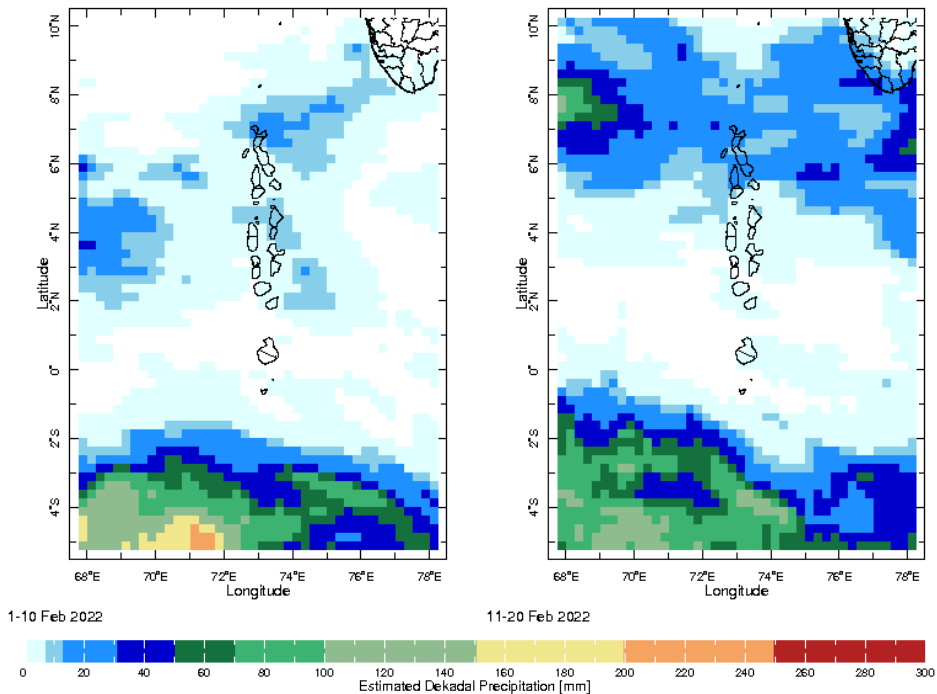


Rainfall in the past 5 years with above-average rainfall hatched in blue and below-average hatched in brown

Ocean Surface Monitoring

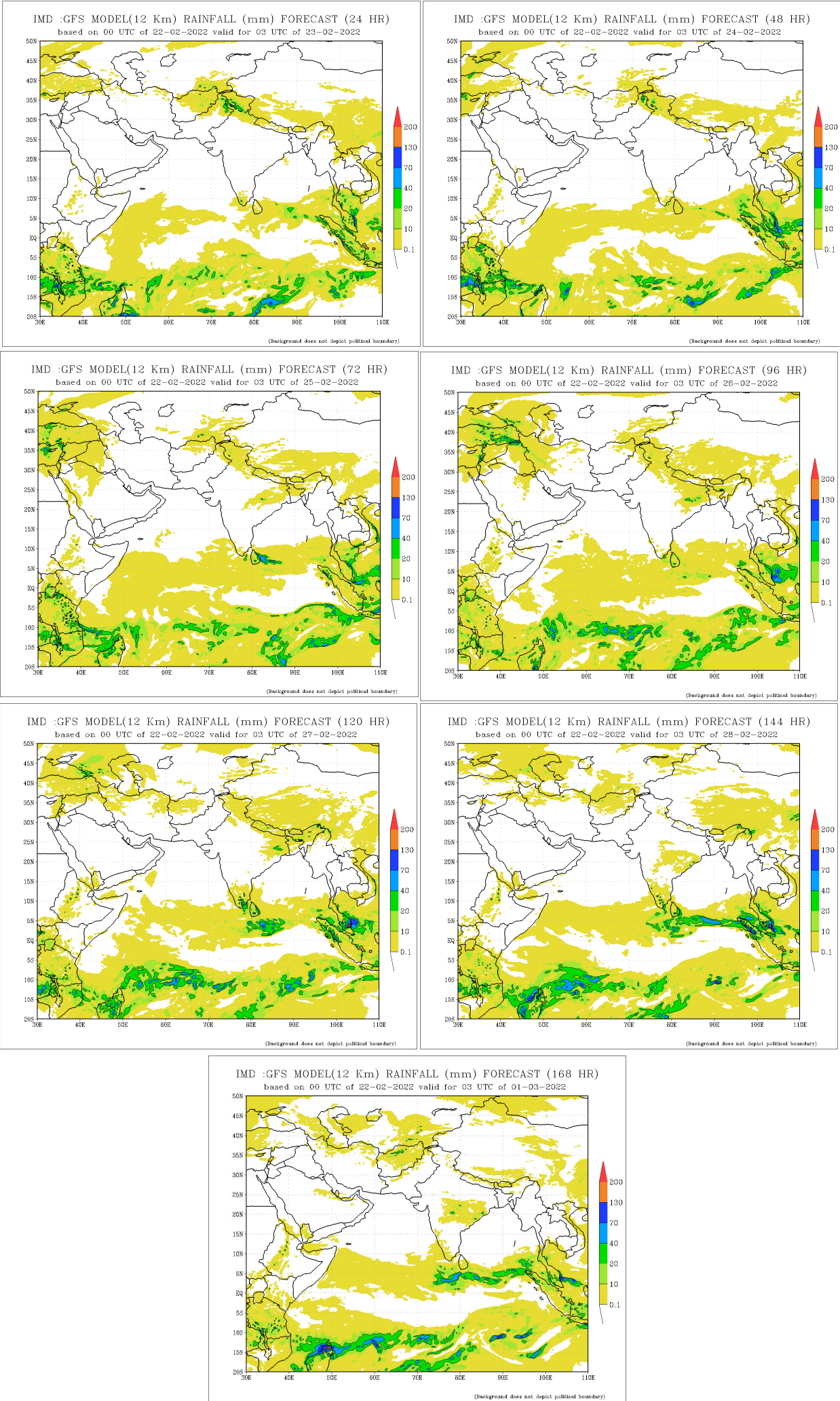


Dekadal (10 Day) Satellite Derived Rainfall Estimates



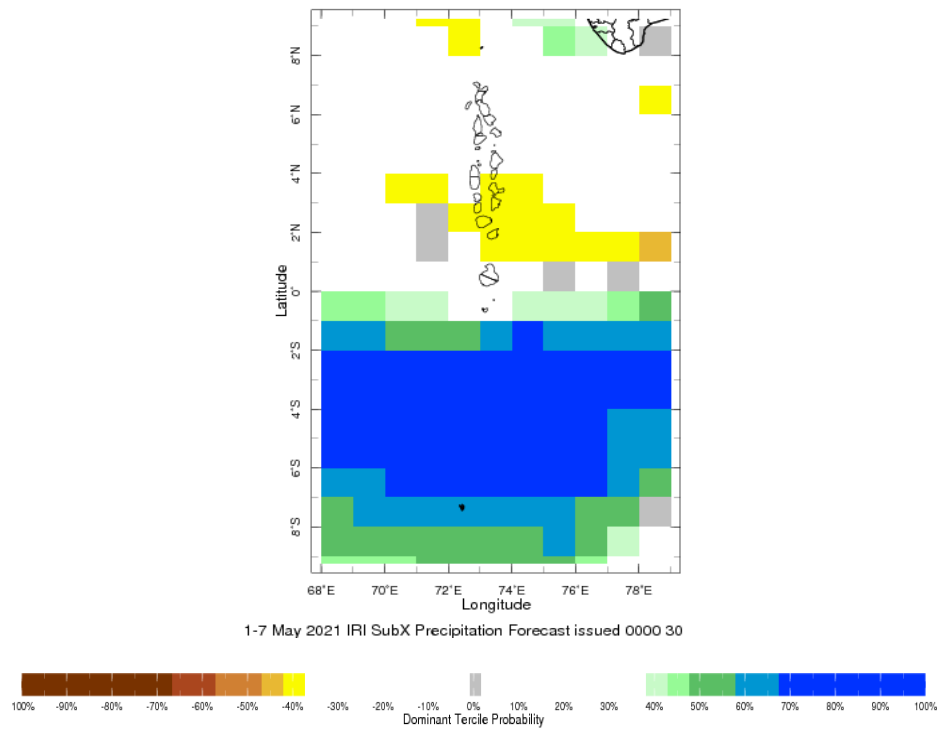
Daily Rainfall Forecast

Daily Rainfall forecasts (up to 7 days ahead) from the IMD is provided in figures below. These predictions are from the GFS (T1534) model covering the entire south Asian region.





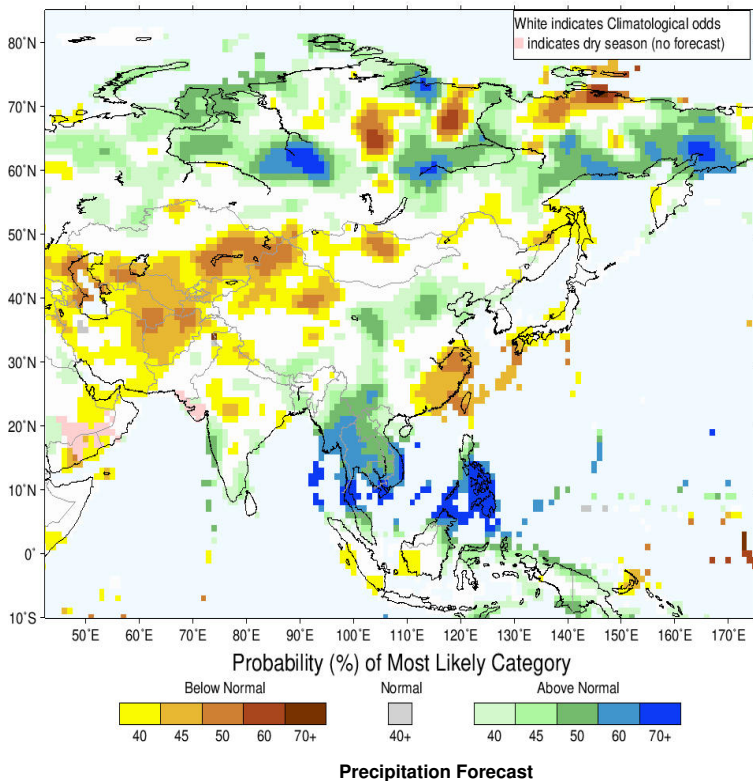
## Weekly Precipitation Forecast



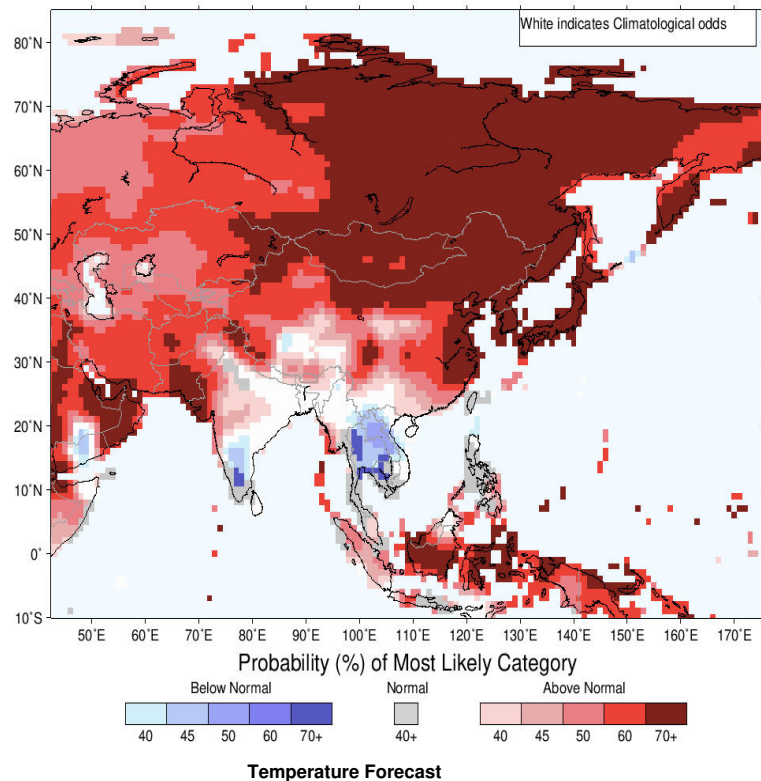
## Seasonal Rainfall and Temperature Forecast

Following is the latest seasonal precipitation and temperature prediction for the next 3 months by the IRI. The color shading indicates the probability of the most dominant tercile -- that is, the tercile having the highest forecast probability. The color bar alongside the map defines these dominant tercile probability levels. The upper side of the color bar shows the colors used for increasingly strong probabilities when the dominant tercile is the above-normal tercile, while the lower side shows likewise for the below-normal tercile. The gray color indicates an enhanced probability for the near-normal tercile (nearly always limited to 40%).

IRI Multi-Model Probability Forecast for Precipitation for March–April–May 2022, Issued February 2022



IRI Multi-Model Probability Forecast for Temperature for March–April–May 2022, Issued February 2022



Subscribe to our Monthly Maldives Newsletter

email address

Subscribe

Follow @fectmv

Contact Us

email: [fectmv@gmail.com](mailto:fectmv@gmail.com)

phone: (+96) 07 788010

blog: [www.fectmv.blogspot.com](http://www.fectmv.blogspot.com)

Foundation for Environment, Climate & Technology,  
REM, Madhrasaadhoshuge,  
Henveiru, Hadheebee Magu,  
Malei ½, 20184,  
Maldives