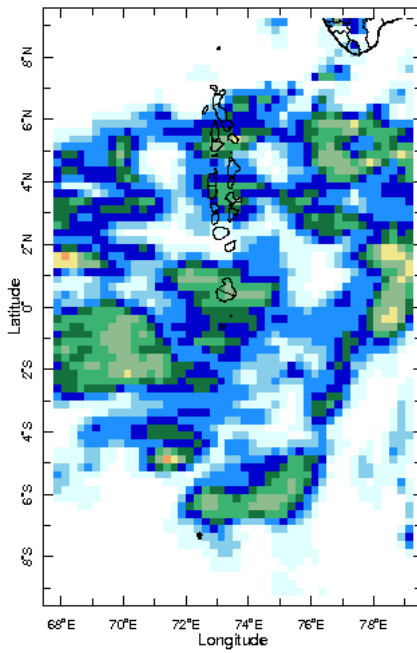
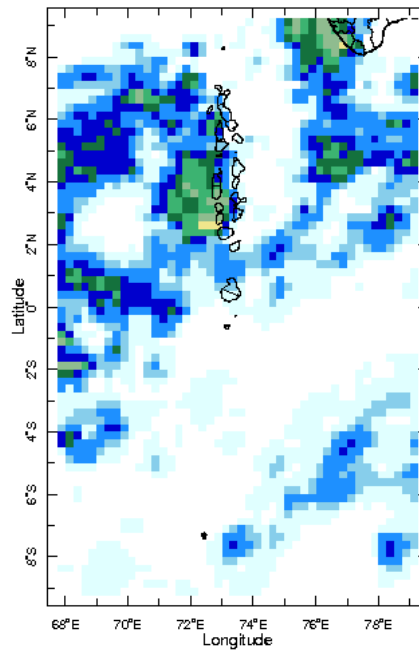


Daily Rainfall Monitoring

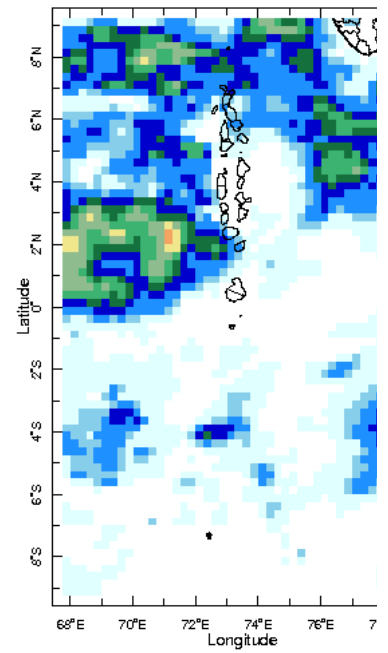
The following figures show the observed rainfall in the last 15 days in Maldives.



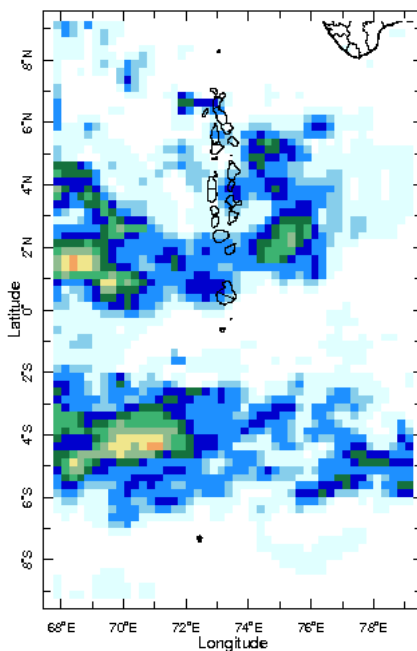
23 May 2019



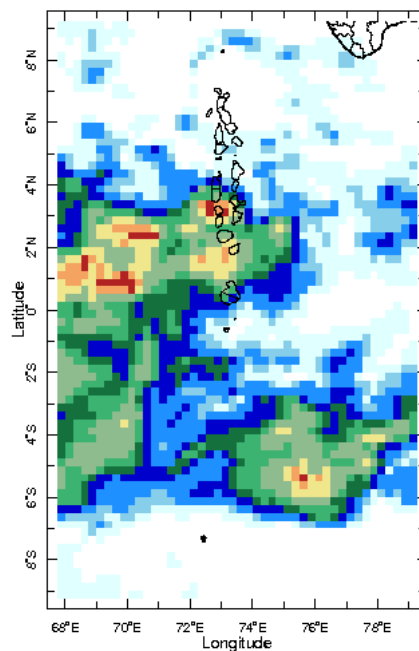
24 May 2019



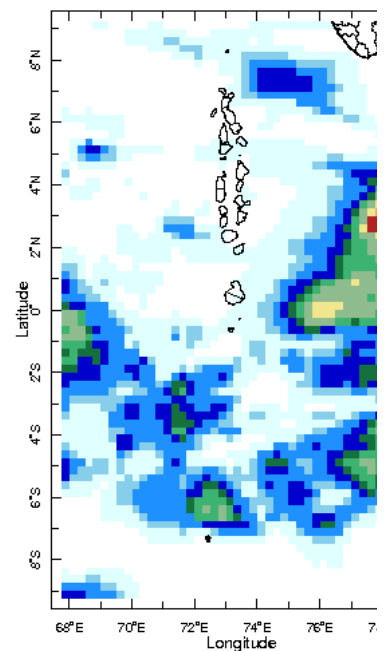
25 May 2019



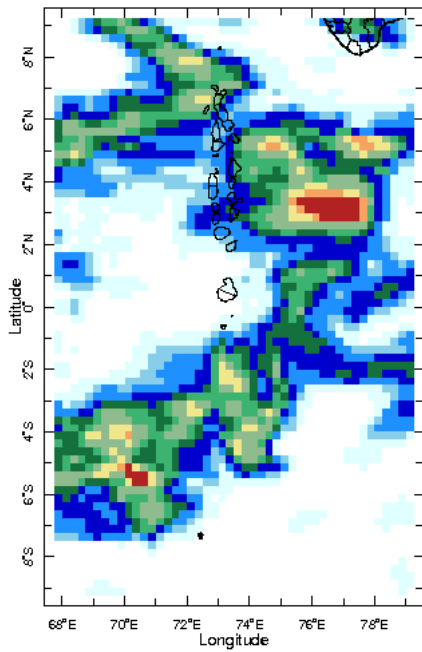
26 May 2019



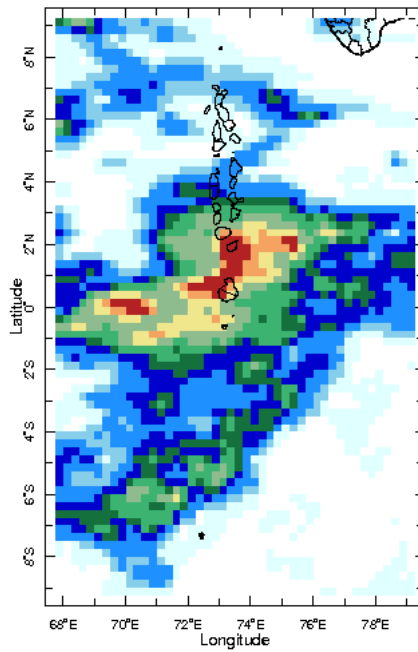
27 May 2019



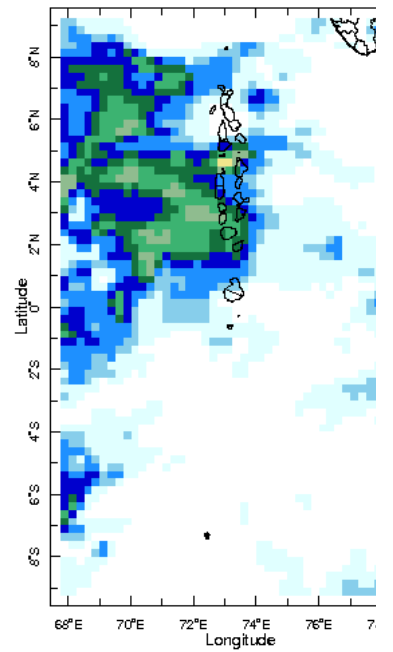
28 May 2019



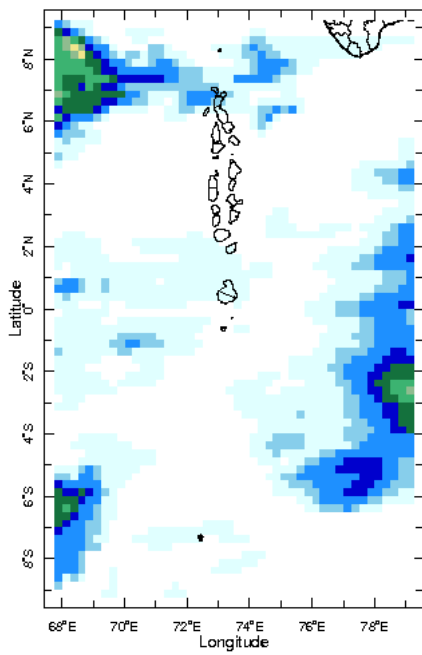
29 May 2019



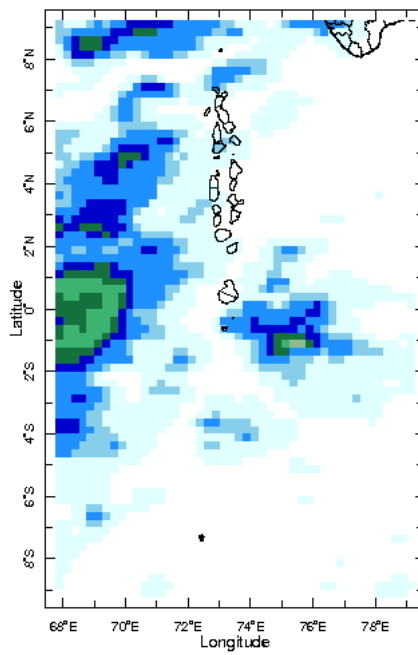
30 May 2019



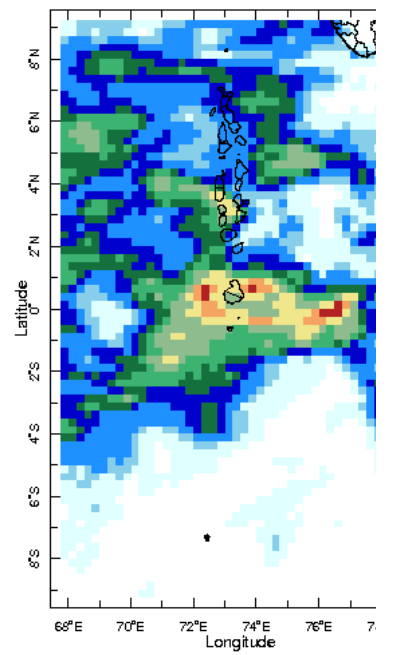
31 May 2019



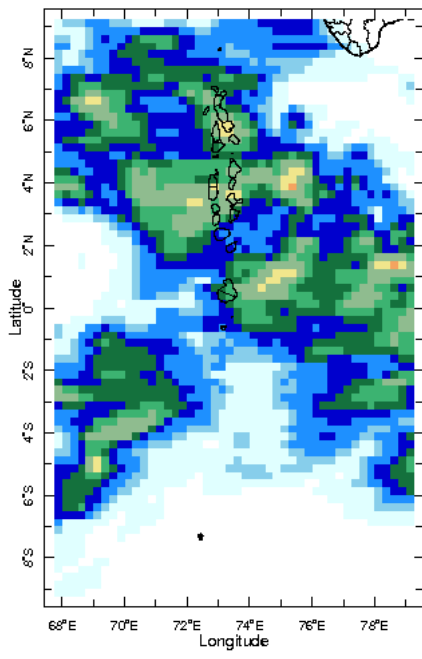
1 Jun 2019



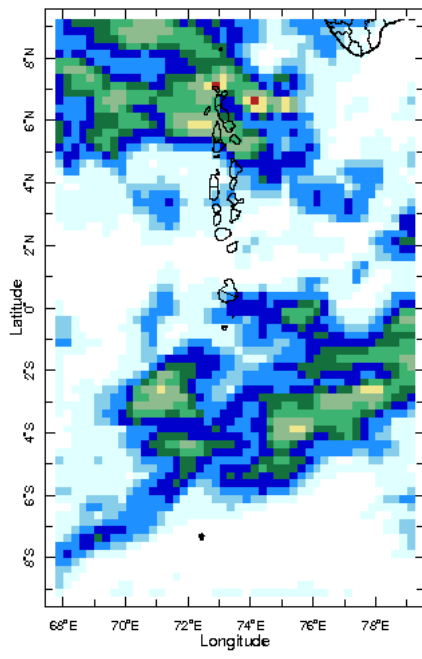
2 Jun 2019



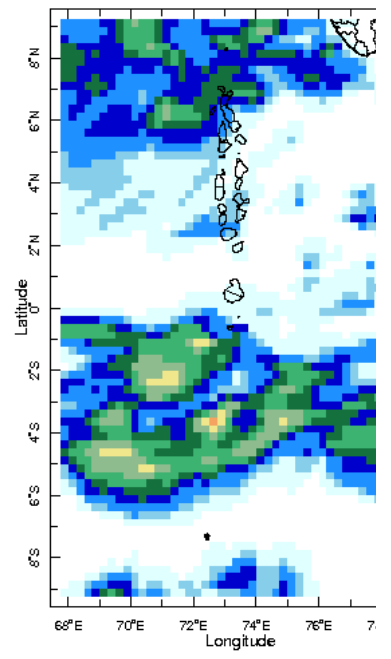
3 Jun 2019



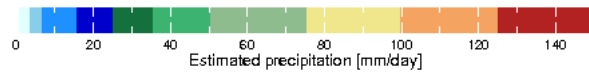
4 Jun 2019

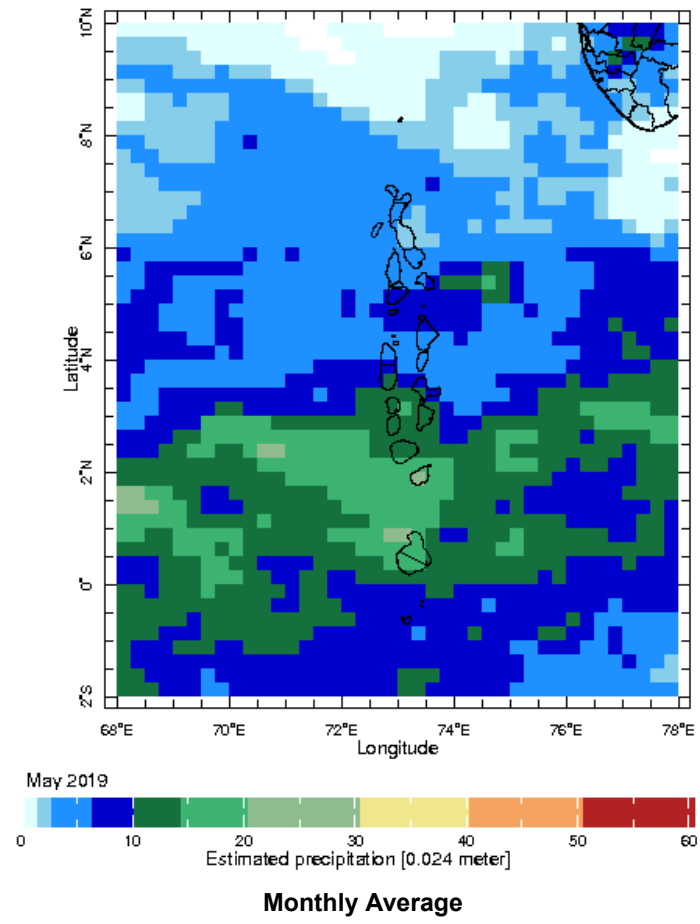


5 Jun 2019



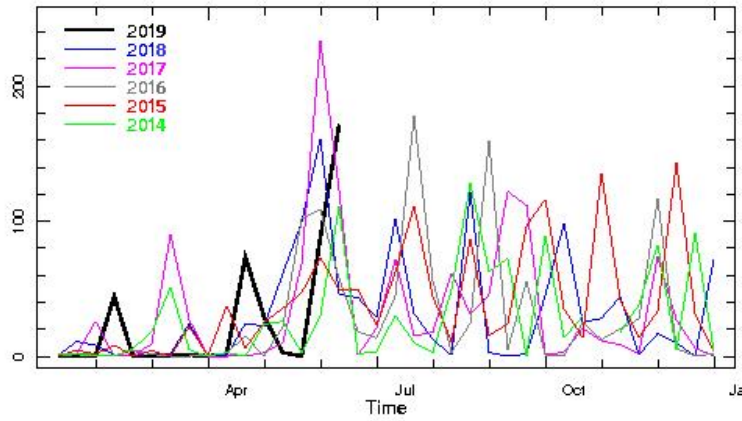
6 Jun 2019





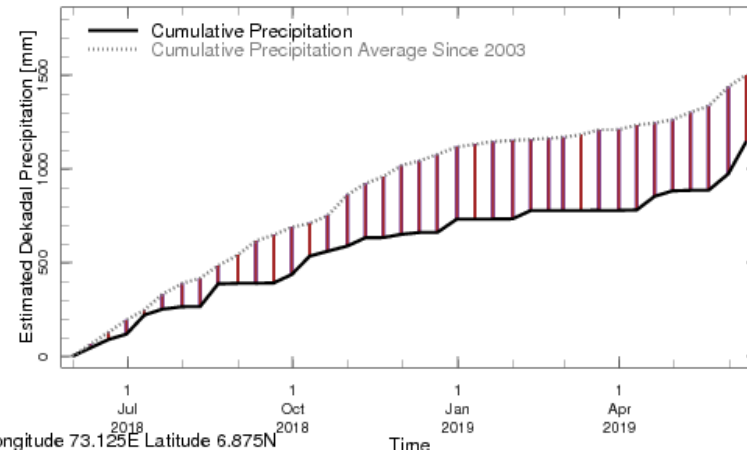
Monthly and Seasonal Monitoring

Northern Maldives:



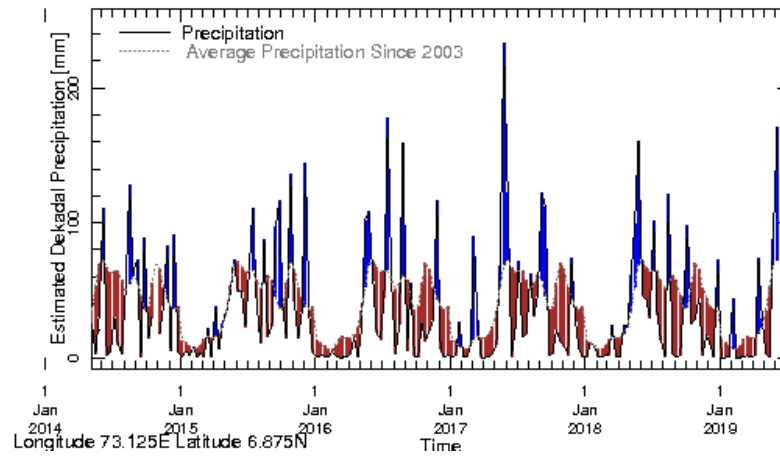
Longitude 73.125E Latitude 6.875N

Rainfall in the current year (black) compared to rainfall in previous 5 years



Longitude 73.125E Latitude 6.875N

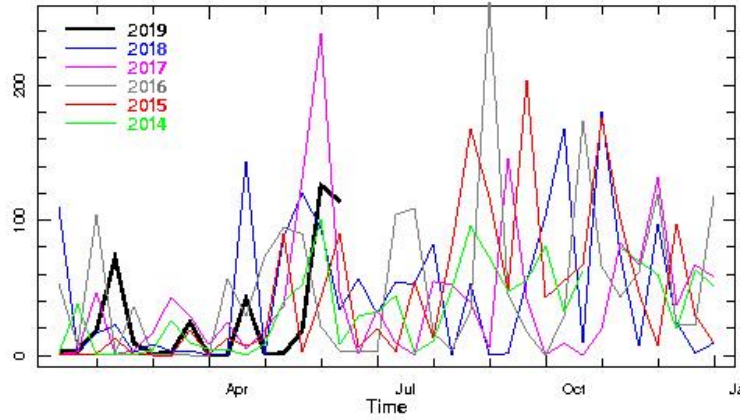
Rainfall of past 365 days (black) compared to average rainfall since 2003.



Longitude 73.125E Latitude 6.875N

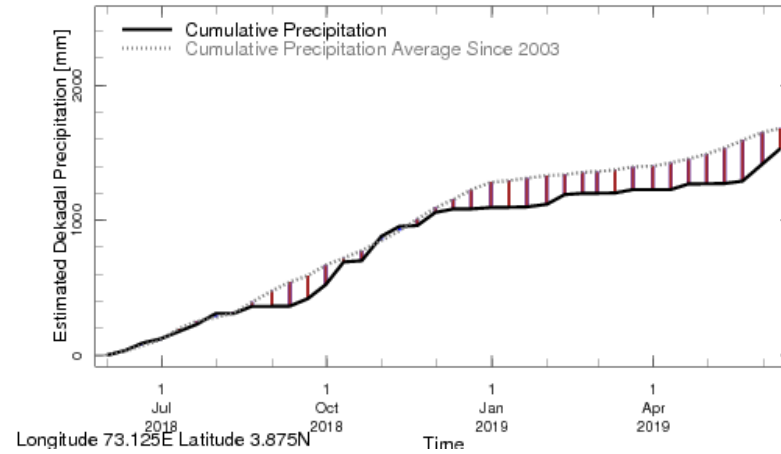
Rainfall in the past 5 years with above-average rainfall hatched in blue and below-average hatched in brown

Central Maldives:



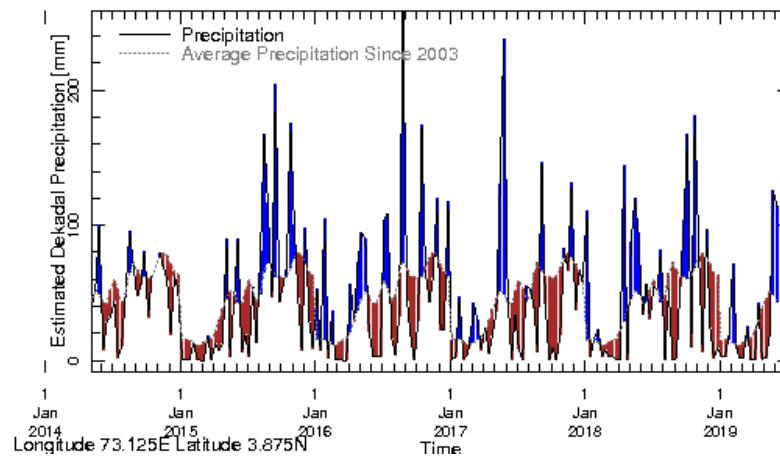
Longitude 73.125E Latitude 3.875N

Rainfall in the current year (black) compared to rainfall in previous 5 years



Longitude 73.125E Latitude 3.875N

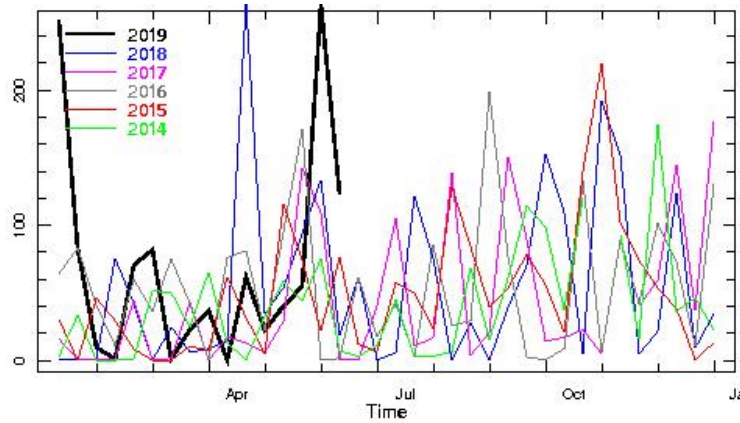
Rainfall of past 365 days (black) compared to average rainfall since 2003.



Longitude 73.125E Latitude 3.875N

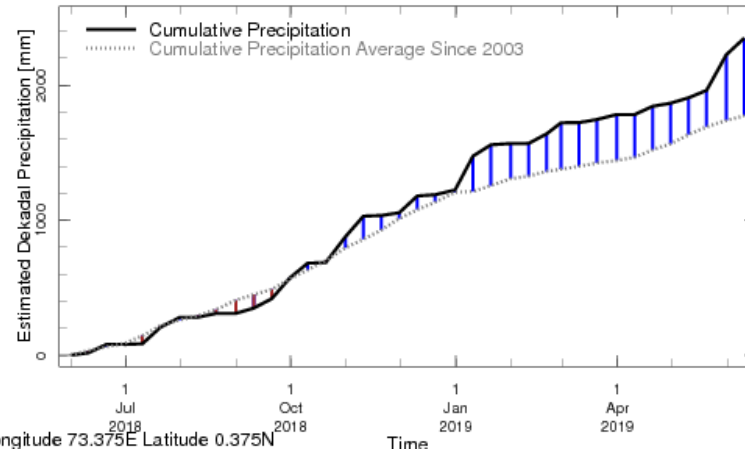
Rainfall in the past 5 years with above-average rainfall hatched in blue and below-average hatched in brown

Southern Maldives:



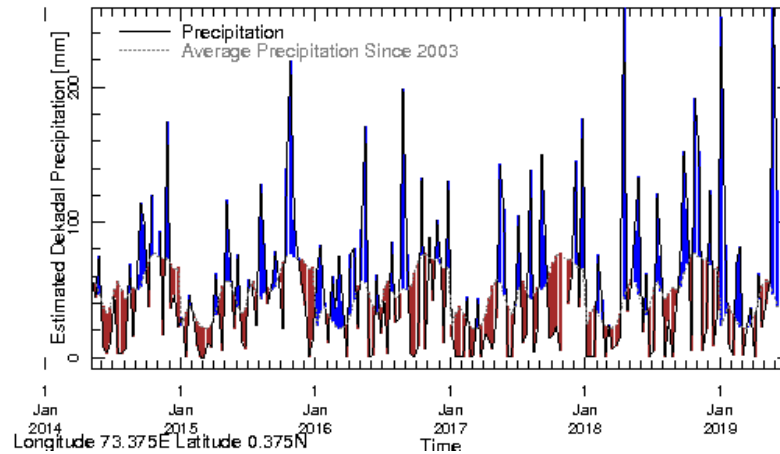
Longitude 73.375E Latitude 0.375N

Rainfall in the current year (black) compared to rainfall in previous 5 years



Longitude 73.375E Latitude 0.375N

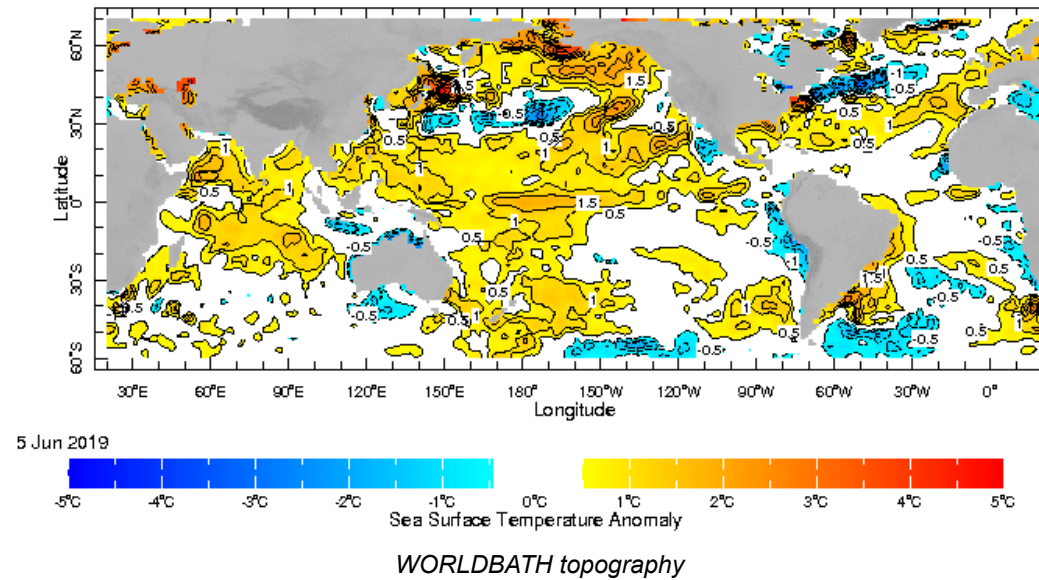
Rainfall of past 365 days (black) compared to average rainfall since 2003.



Longitude 73.375E Latitude 0.375N

Rainfall in the past 5 years with above-average rainfall hatched in blue and below-average hatched in brown

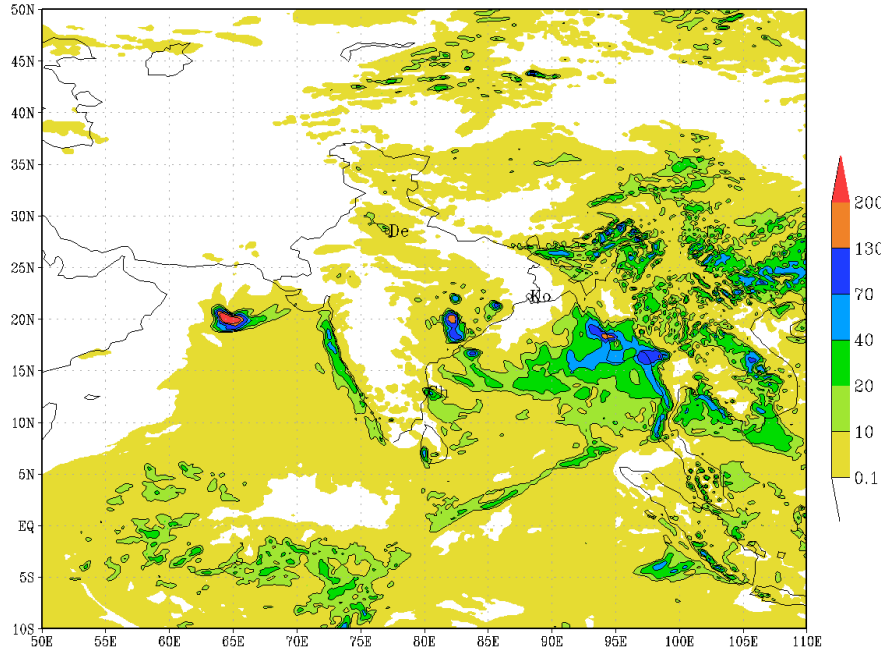
Ocean Surface Monitoring



Daily Rainfall Forecast

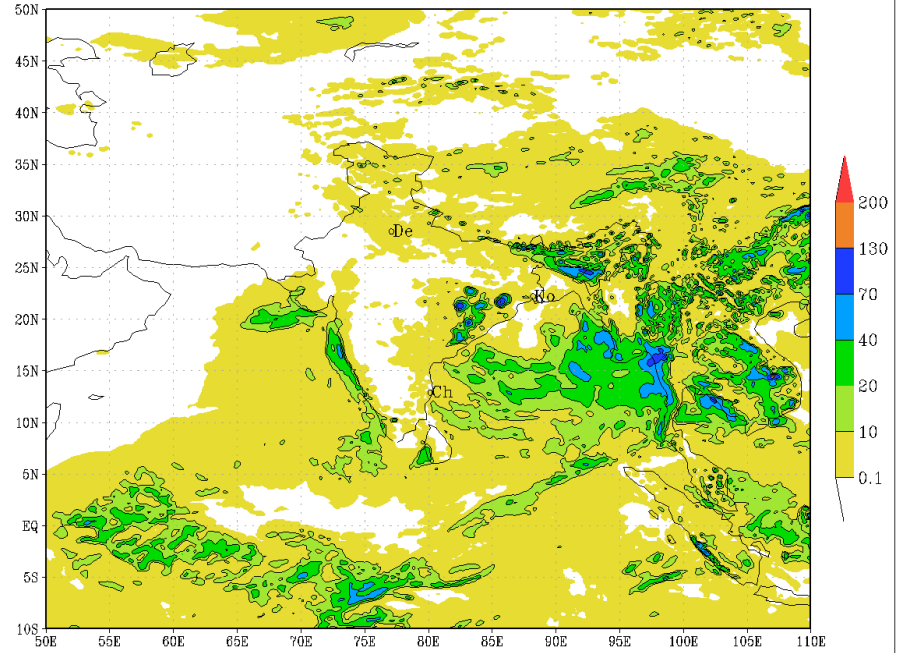
Daily Rainfall forecasts (up to 7 days ahead) from the IMD is provided in figures below. These predictions are from the GFS (T1534) model covering the entire south Asian region.

IMD :GFS MODEL(12 Km) RAINFALL (mm) FORECAST (24 HR)
based on 00 UTC of 16-06-2019 valid for 03 UTC of 17-06-2019



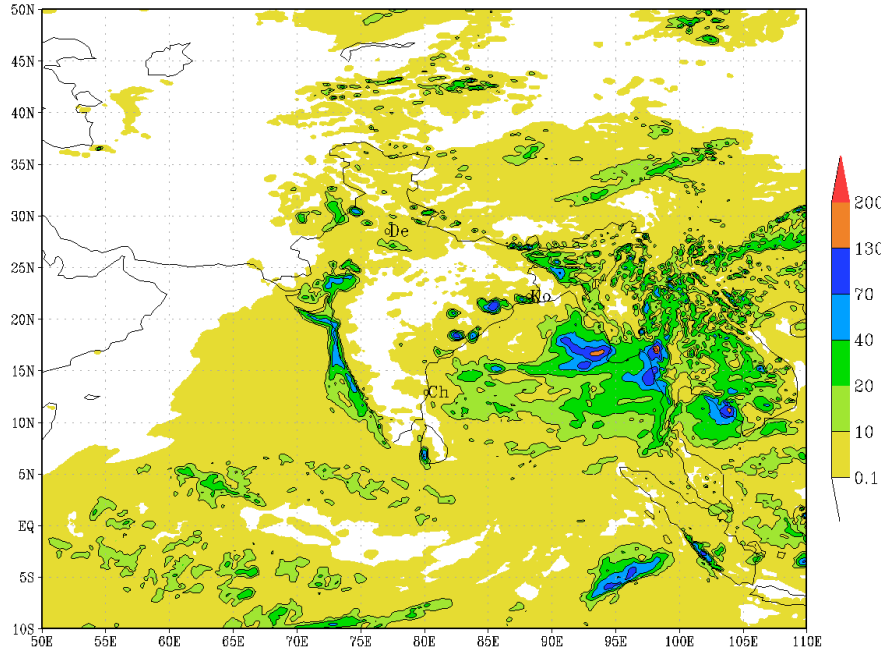
(Background does not depict political boundary)

IMD :GFS MODEL(12 Km) RAINFALL (mm) FORECAST (48 HR)
based on 00 UTC of 16-06-2019 valid for 03 UTC of 18-06-2019



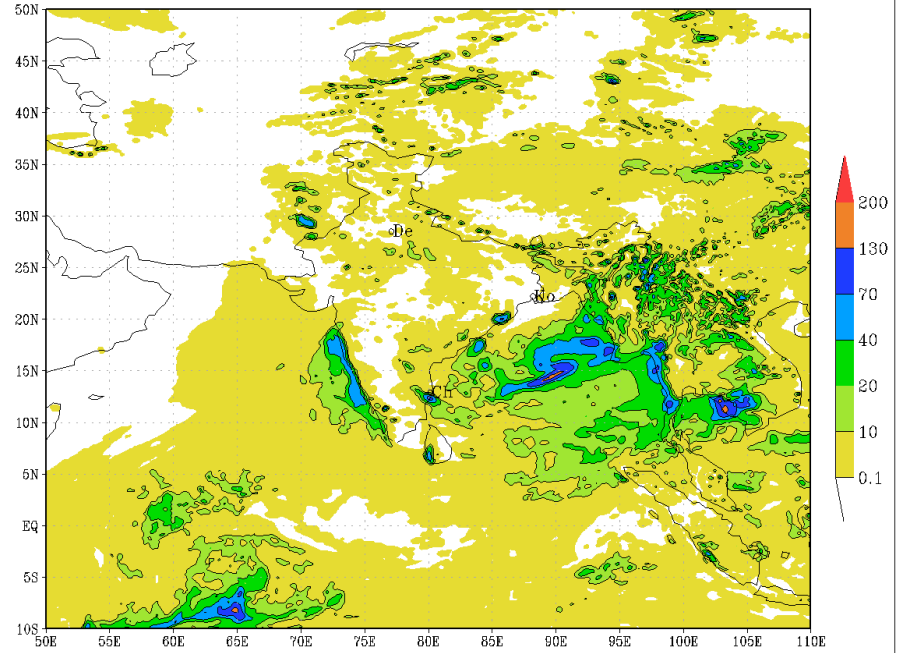
(Background does not depict political boundary)

IMD :GFS MODEL(12 Km) RAINFALL (mm) FORECAST (72 HR)
based on 00 UTC of 16-06-2019 valid for 03 UTC of 19-06-2019



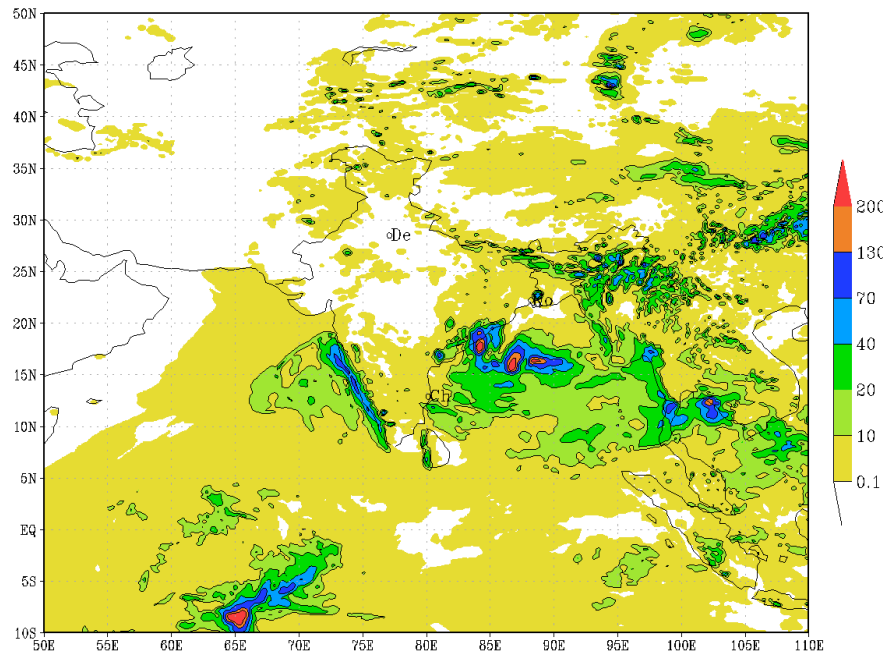
(Background does not depict political boundary)

IMD :GFS MODEL(12 Km) RAINFALL (mm) FORECAST (96 HR)
based on 00 UTC of 16-06-2019 valid for 03 UTC of 20-06-2019



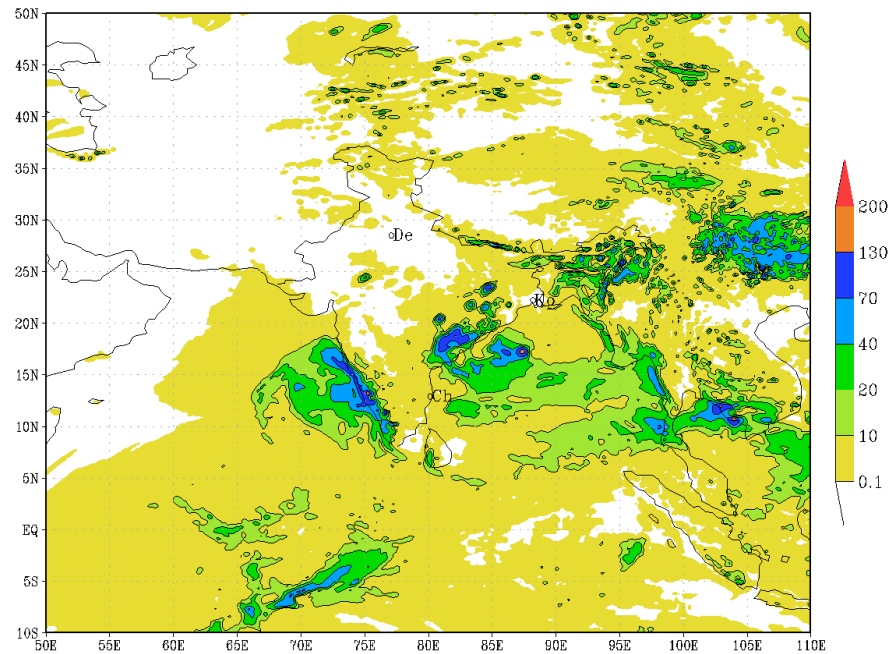
(Background does not depict political boundary)

IMD :GFS MODEL(12 Km) RAINFALL (mm) FORECAST (120 HR)
based on 00 UTC of 16-06-2019 valid for 03 UTC of 21-06-2019

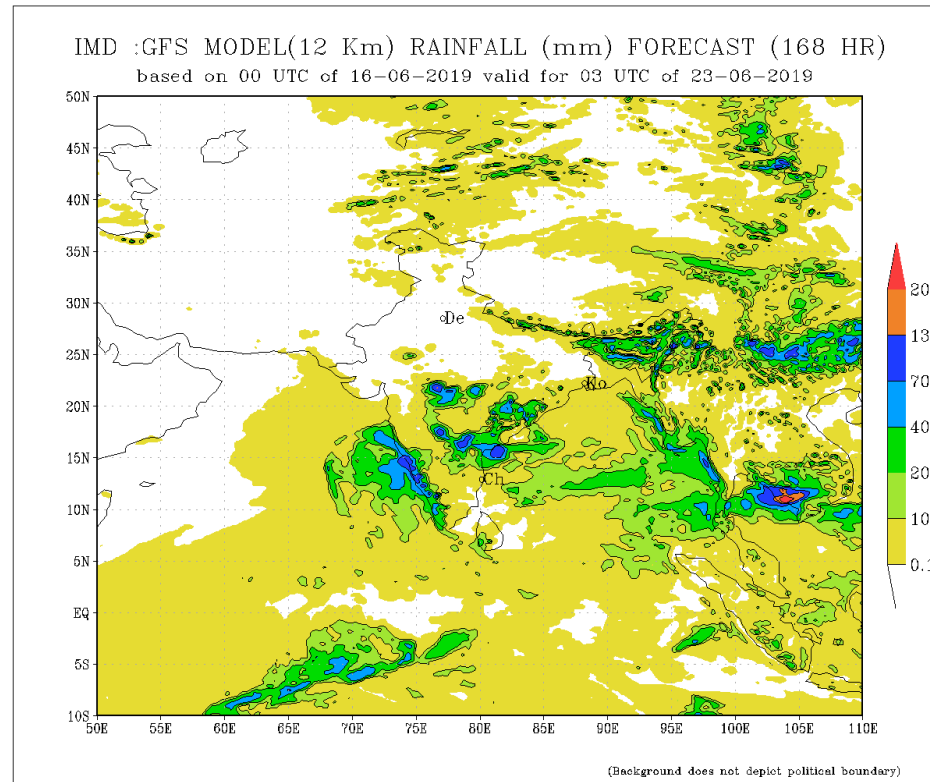


(Background does not depict political boundary)

IMD :GFS MODEL(12 Km) RAINFALL (mm) FORECAST (144 HR)
based on 00 UTC of 16-06-2019 valid for 03 UTC of 22-06-2019



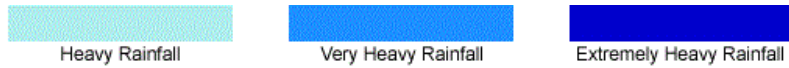
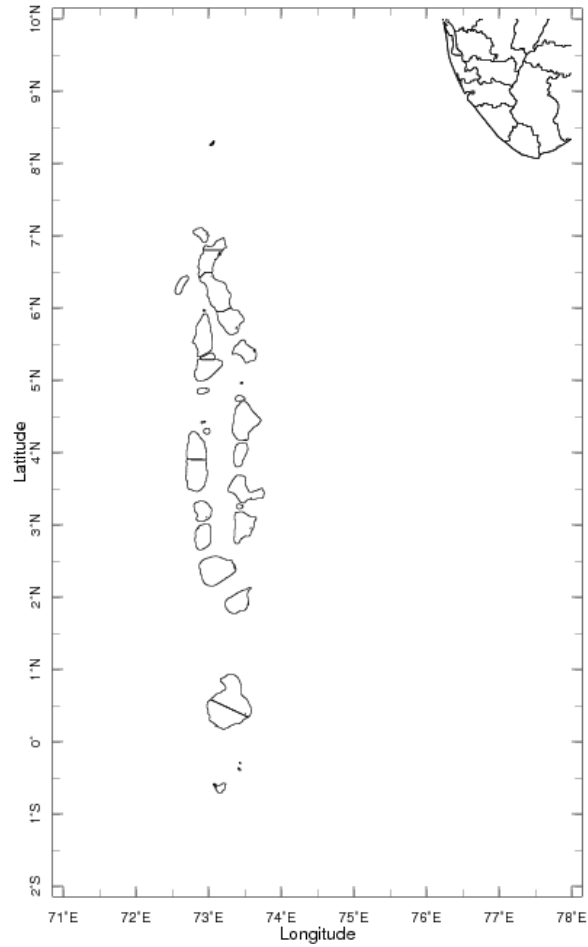
(Background does not depict political boundary)



Weekly Rainfall Forecast

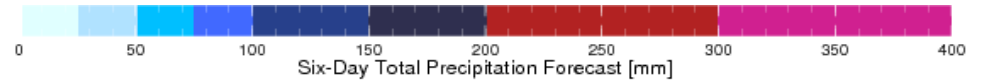
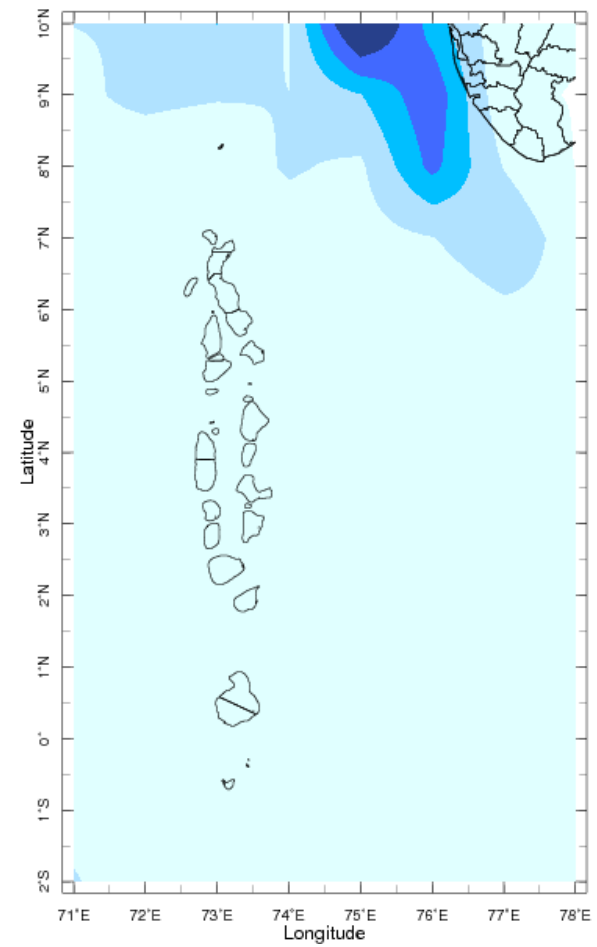
Total rainfall forecast from the IRI for next six days is provided in figures below. The figure to the left shows the expectancy of heavy rainfall events during these six days while the figure to the right is the prediction of total rainfall amount during this period.

Forecast for 15-20 Jun 2019 Issued 0000 15 Jun 2019



Extreme Rainfall Forecast

Forecast for 15-20 Jun 2019 Issued 0000 15 Jun 2019



Total Six Day Precipitation Forecast