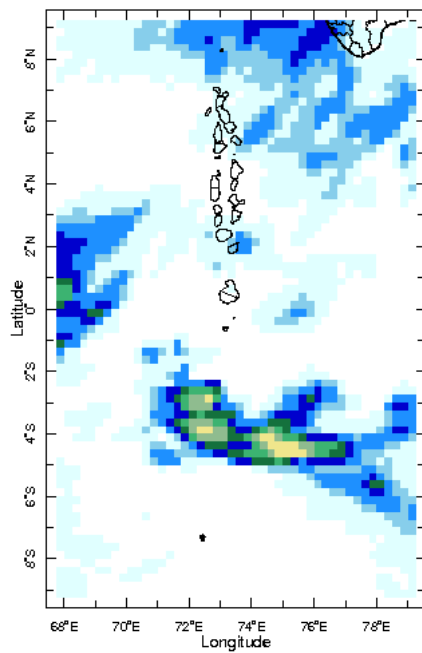
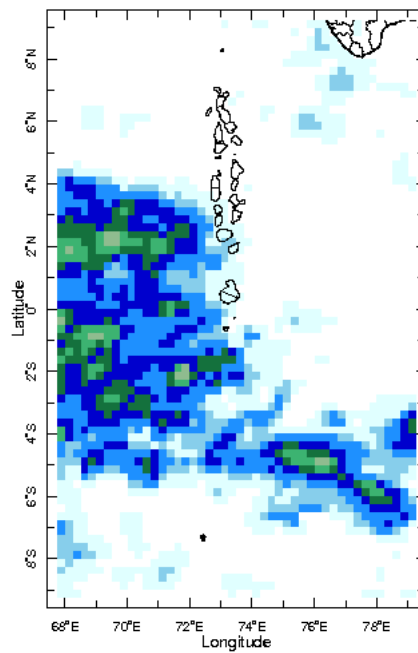


Daily Rainfall Monitoring

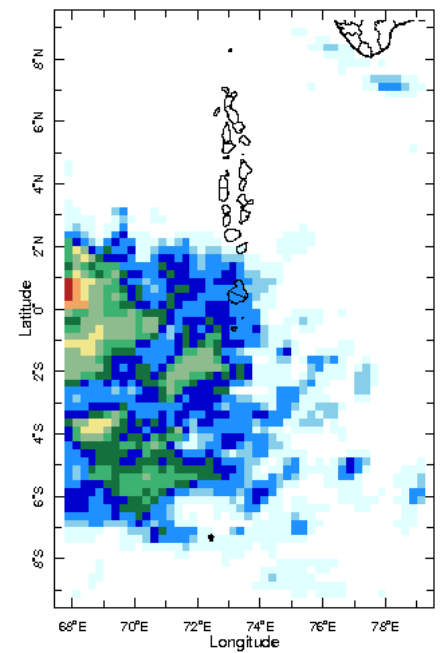
The following figures show the observed rainfall in the last 15 days in Maldives.



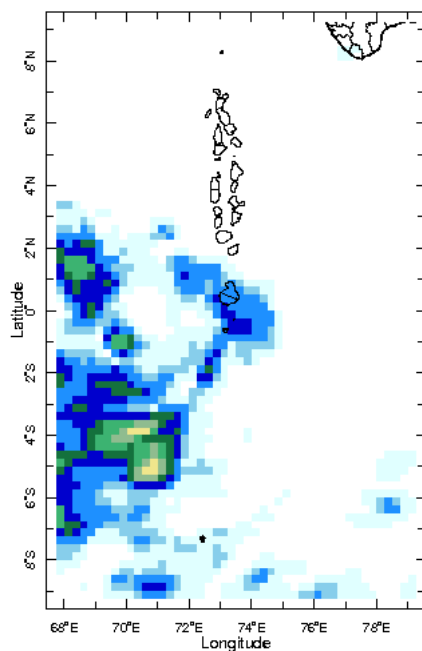
22 Jun 2019



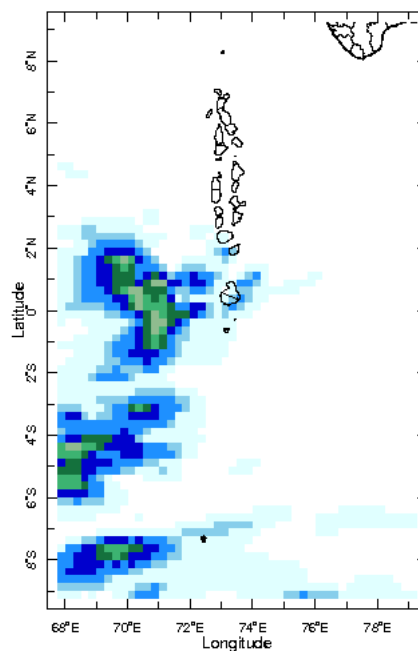
23 Jun 2019



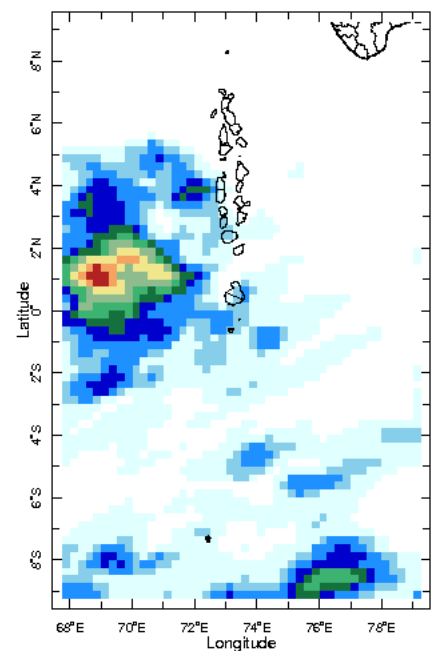
24 Jun 2019



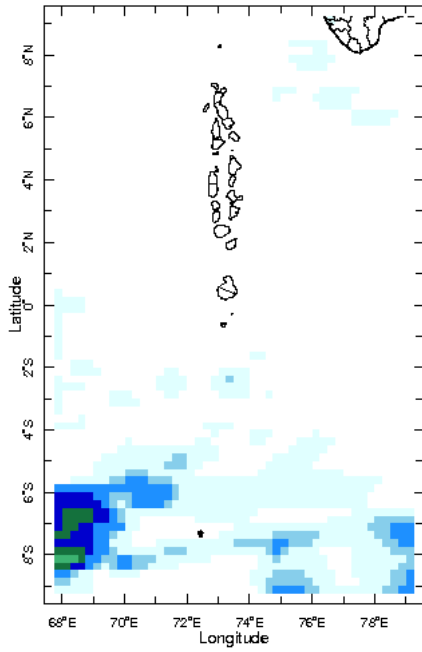
25 Jun 2019



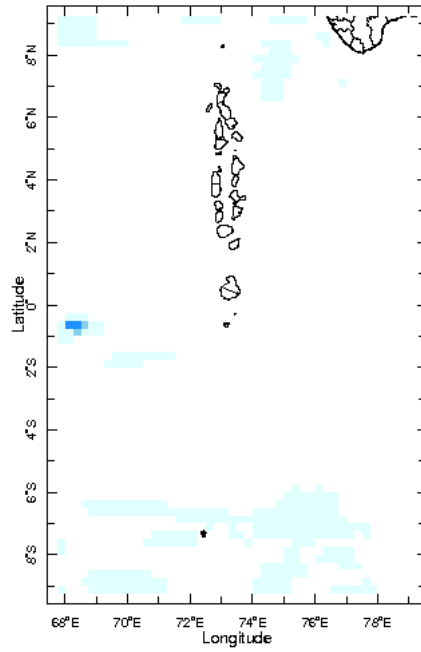
26 Jun 2019



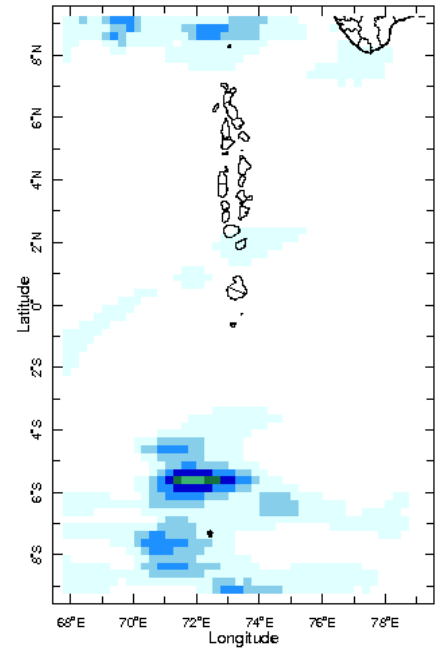
27 Jun 2019



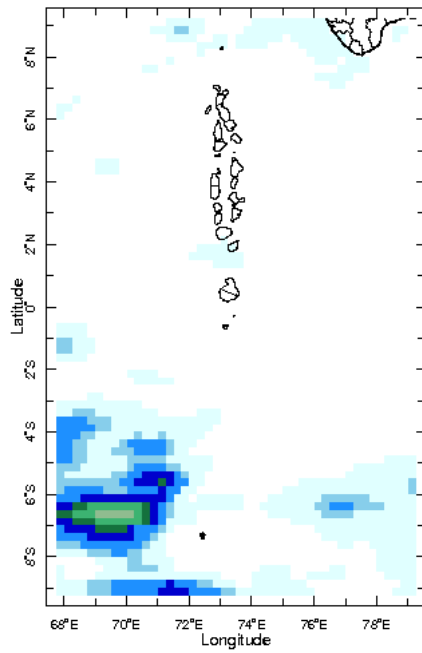
1 Jul 2019



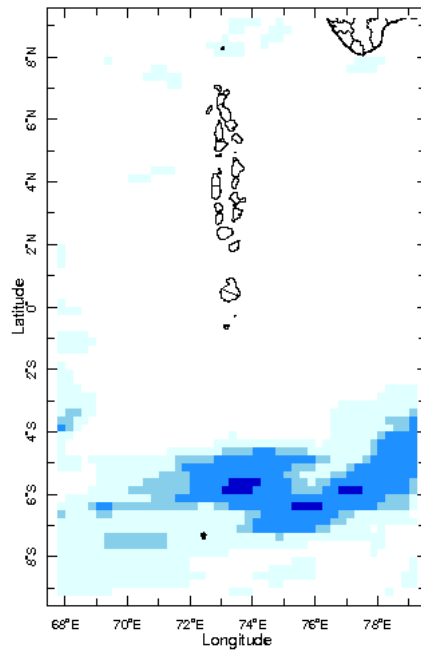
2 Jul 2019



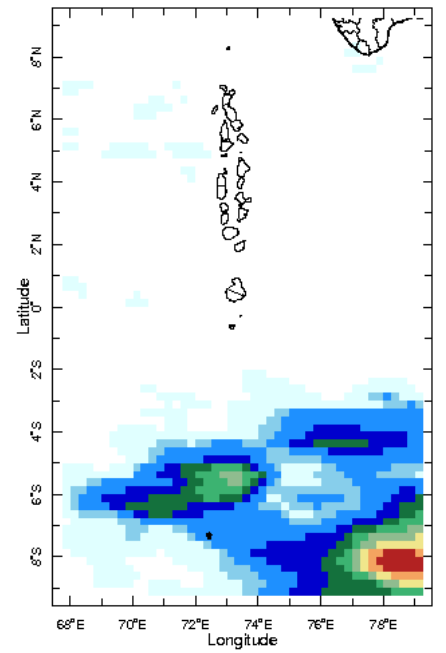
3 Jul 2019



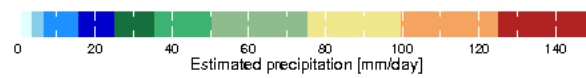
4 Jul 2019



5 Jul 2019

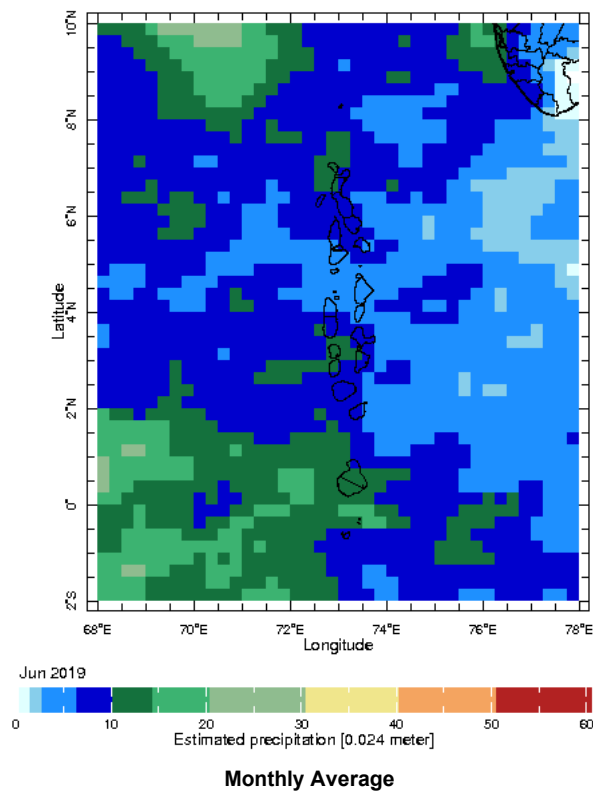


6 Jul 2019



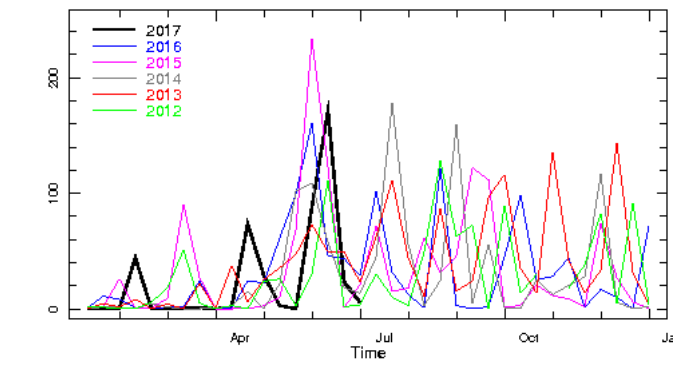
Monthly Rainfall Monitoring

The figure shows the average observed rainfall in the previous month.

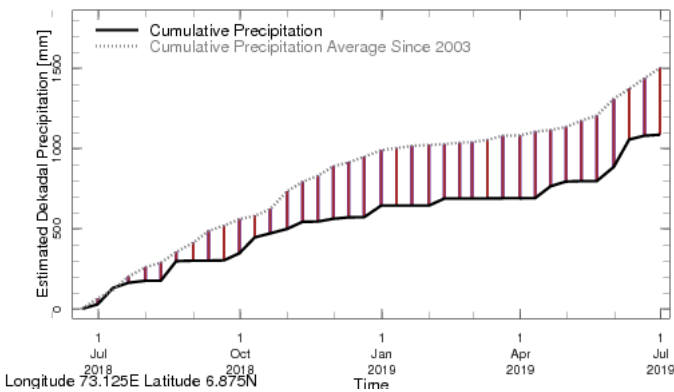


Monthly and Seasonal Monitoring

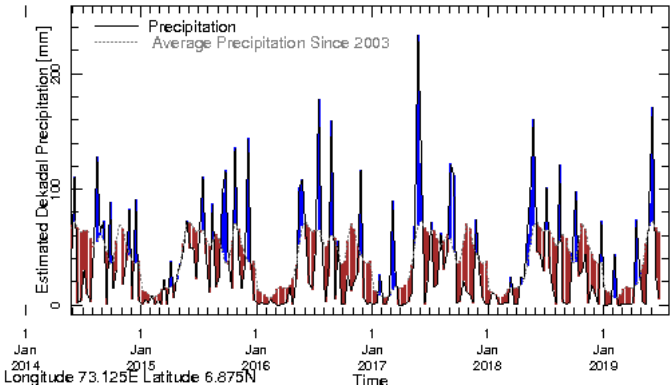
Northern Maldives:



Longitude 73.125E Latitude 6.875N
Rainfall in the current year (black) compared to rainfall in previous 5 years

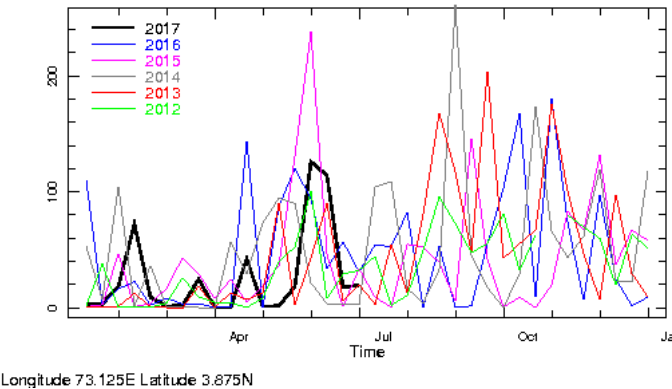


Longitude 73.125E Latitude 6.875N
Rainfall of past 365 days (black) compared to average rainfall since 2003.

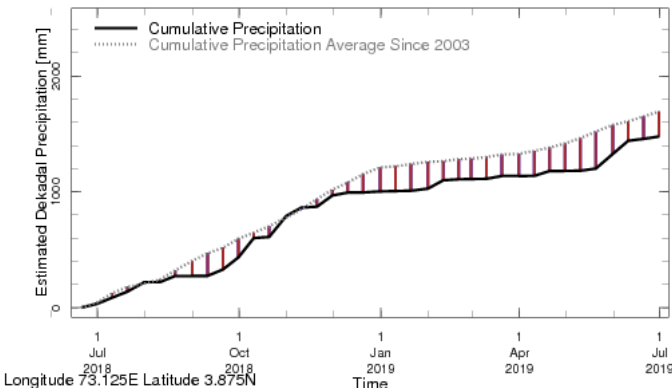


Longitude 73.125E Latitude 6.875N
Rainfall in the past 5 years with above-average rainfall hatched in blue and below-average hatched in brown

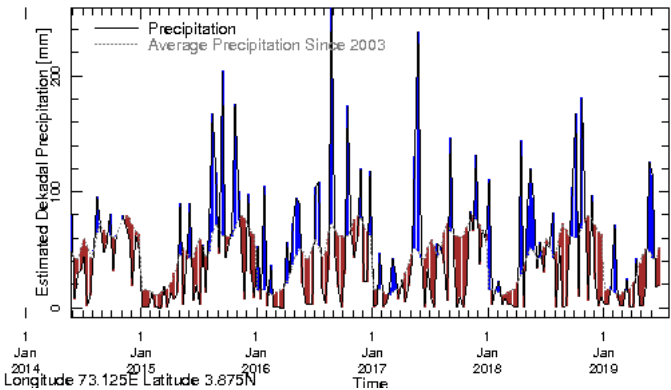
Central Maldives:



Rainfall in the current year (black) compared to rainfall in previous 5 years

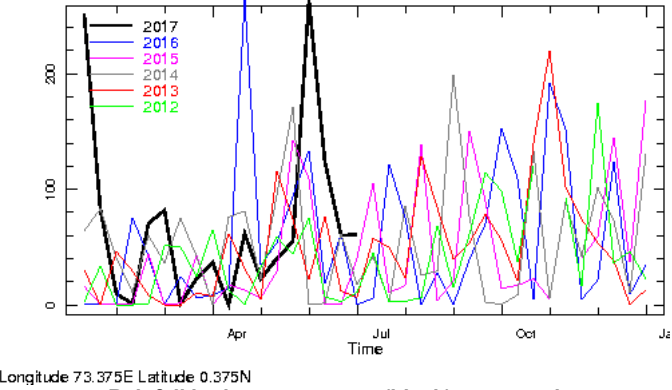


Rainfall of past 365 days (black) compared to average rainfall since 2003.

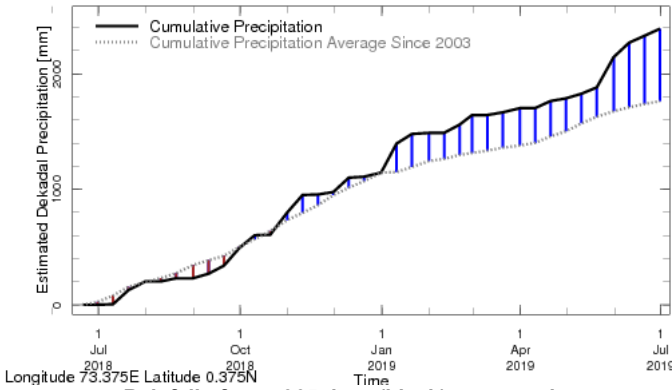


Rainfall in the past 5 years with above-average rainfall hatched in blue and below-average hatched in brown

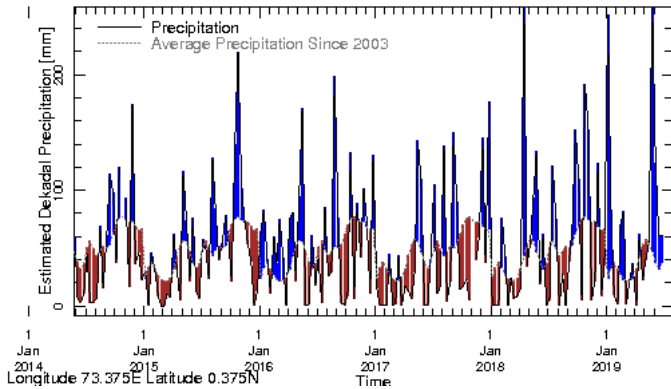
Southern Maldives:



Rainfall in the current year (black) compared to rainfall in previous 5 years

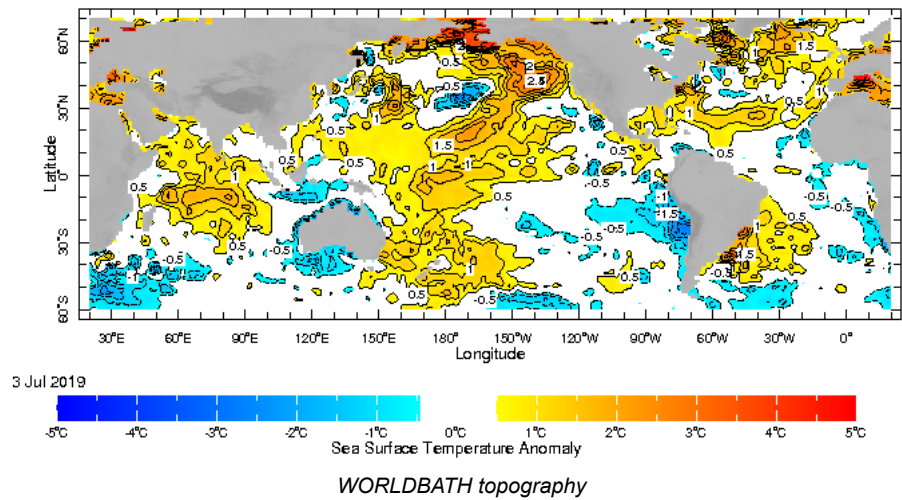


Rainfall of past 365 days (black) compared to average rainfall since 2003.



Rainfall in the past 5 years with above-average rainfall hatched in blue and below-average hatched in brown

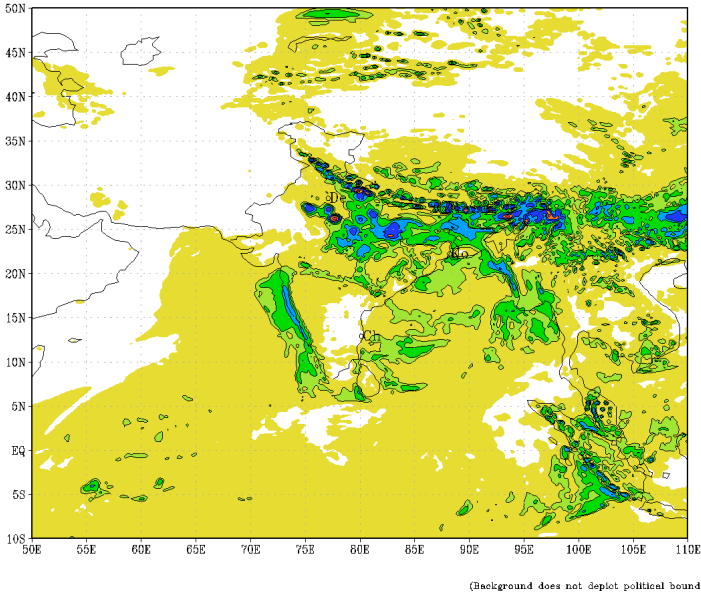
Ocean Surface Monitoring



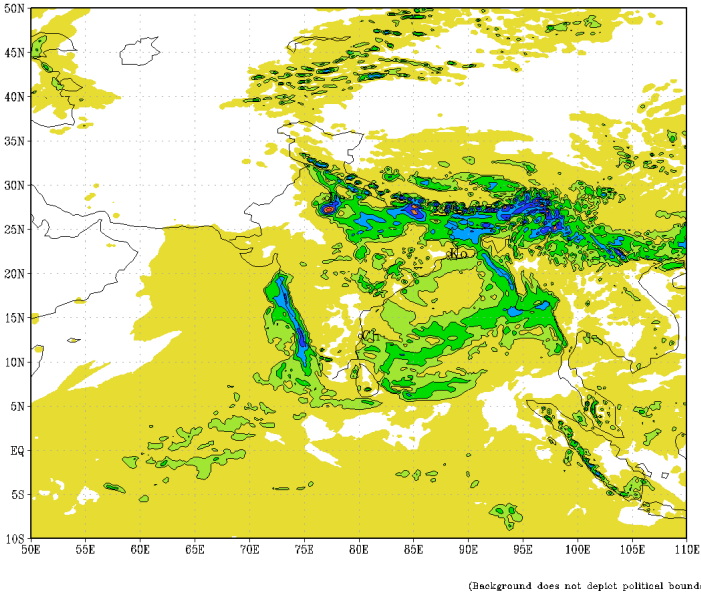
Daily Rainfall Forecast

Daily Rainfall forecasts (up to 7 days ahead) from the IMD is provided in figures below. These predictions are from the GFS (T1534) model covering the entire south Asian region.

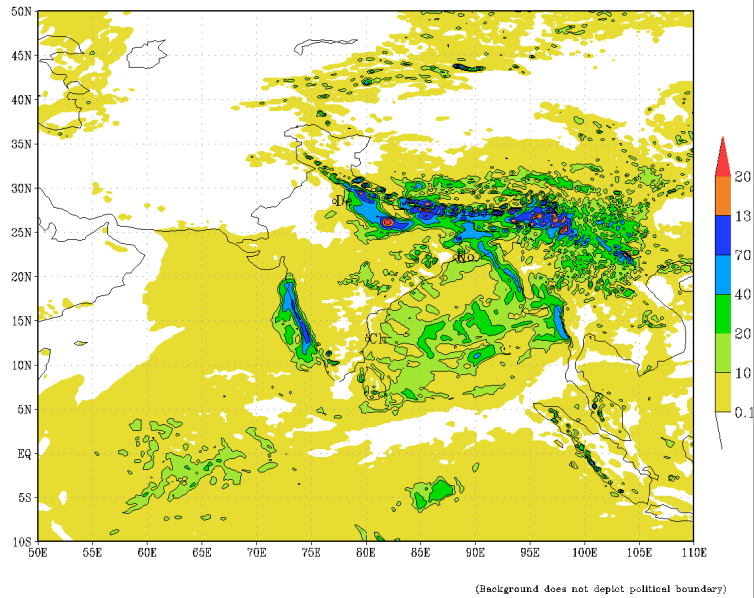
IMD :GFS MODEL(12 Km) RAINFALL (mm) FORECAST (24 HR)
based on 00 UTC of 08-07-2019 valid for 03 UTC of 09-07-2019



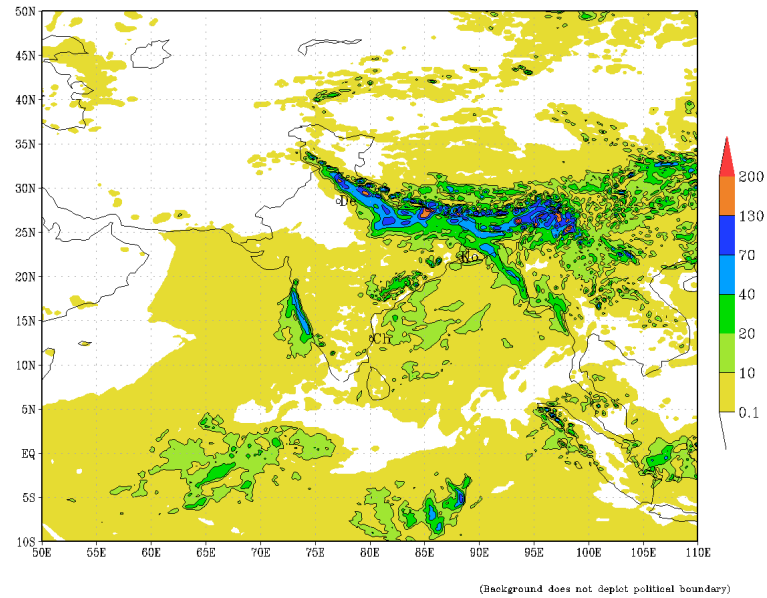
IMD :GFS MODEL(12 Km) RAINFALL (mm) FORECAST (48 HR)
based on 00 UTC of 08-07-2019 valid for 03 UTC of 10-07-2019



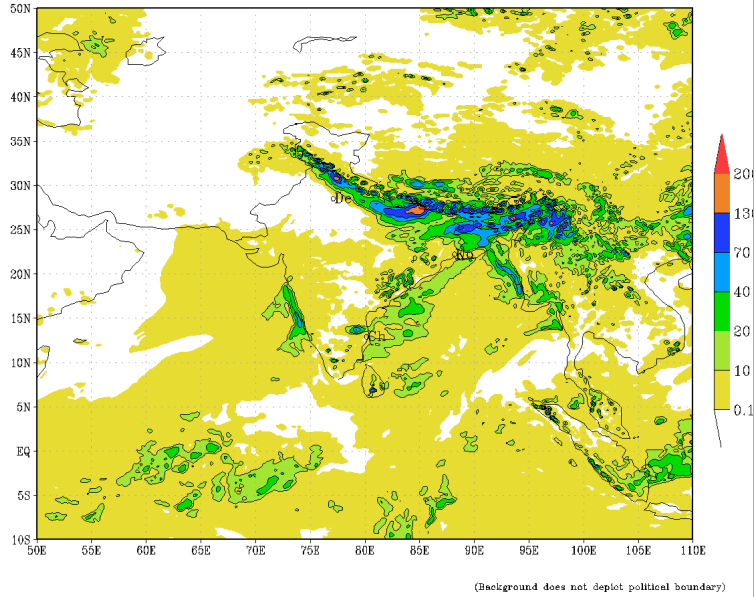
IMD :GFS MODEL(12 Km) RAINFALL (mm) FORECAST (72 HR)
based on 00 UTC of 08-07-2019 valid for 03 UTC of 11-07-2019



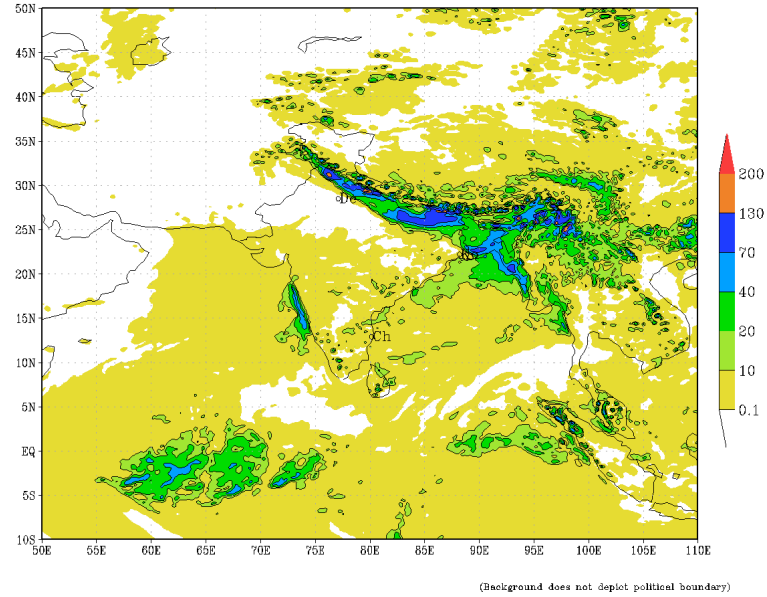
IMD :GFS MODEL(12 Km) RAINFALL (mm) FORECAST (96 HR)
based on 00 UTC of 08-07-2019 valid for 03 UTC of 12-07-2019

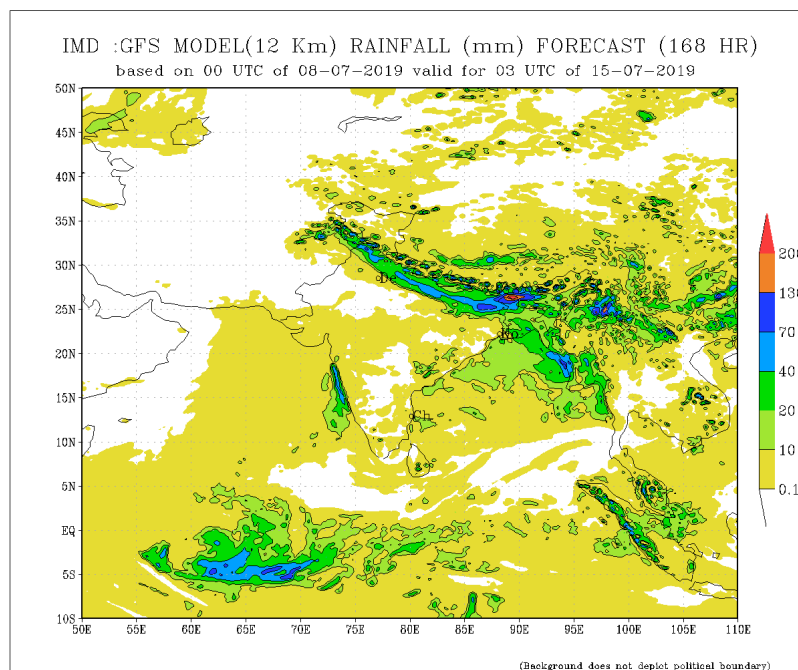


IMD :GFS MODEL(12 Km) RAINFALL (mm) FORECAST (120 HR)
based on 00 UTC of 08-07-2019 valid for 03 UTC of 13-07-2019



IMD :GFS MODEL(12 Km) RAINFALL (mm) FORECAST (144 HR)
based on 00 UTC of 08-07-2019 valid for 03 UTC of 14-07-2019

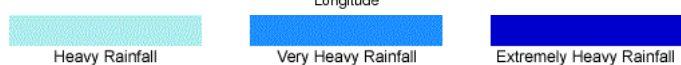
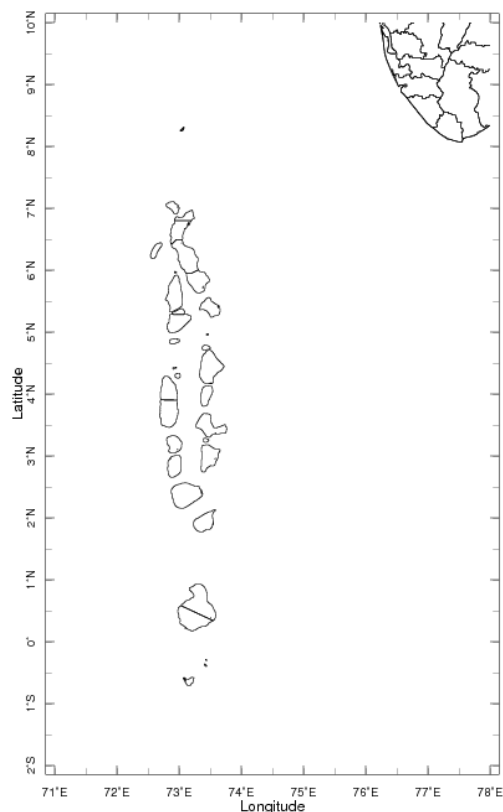




Weekly Rainfall Forecast

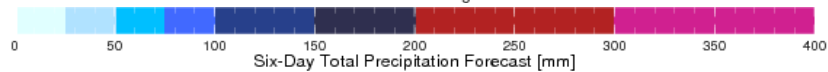
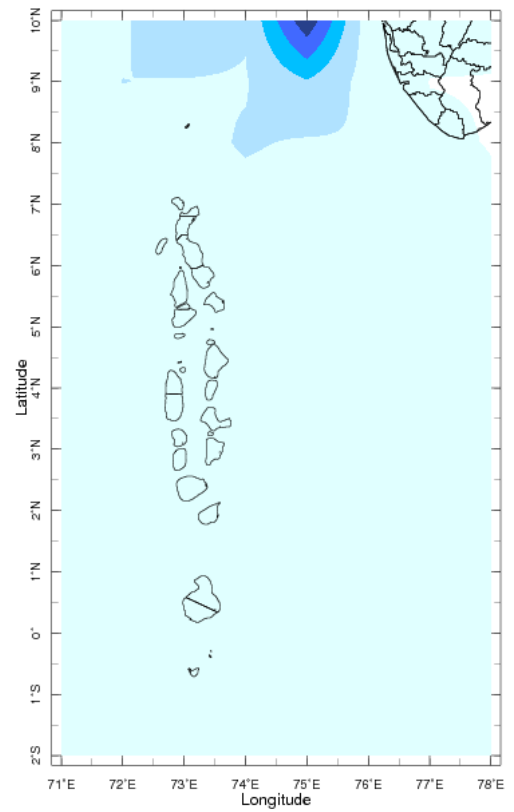
Total rainfall forecast from the IRI for next six days is provided in figures below. The figure to the left shows the expectancy of heavy rainfall events during these six days while the figure to the right is the prediction of total rainfall amount during this period.

Forecast for 7-12 Jul 2019 Issued 0000 7 Jul 2019



Extreme Rainfall Forecast

Forecast for 7-12 Jul 2019 Issued 0000 7 Jul 2019



Total Six Day Precipitation Forecast